



HAL
open science

Muc5b-deficient mice develop early histological lung abnormalities.

Hélène Valque, Valérie Gouyer, Catherine Duez, Christophe Leboeuf, Philippe Marquillies, Marc Le Bert, Ségolène Plet, Bernhard Ryffel, Anne Janin, Frederic Gottrand, et al.

► To cite this version:

Hélène Valque, Valérie Gouyer, Catherine Duez, Christophe Leboeuf, Philippe Marquillies, et al.. Muc5b-deficient mice develop early histological lung abnormalities.. *Biology Open*, 2019, 8, pp.bio046359. 10.1242/bio.046359 . hal-02359040

HAL Id: hal-02359040

<https://hal.univ-lille.fr/hal-02359040>

Submitted on 12 Nov 2019

HAL is a multi-disciplinary open access archive for the deposit and dissemination of scientific research documents, whether they are published or not. The documents may come from teaching and research institutions in France or abroad, or from public or private research centers.

L'archive ouverte pluridisciplinaire **HAL**, est destinée au dépôt et à la diffusion de documents scientifiques de niveau recherche, publiés ou non, émanant des établissements d'enseignement et de recherche français ou étrangers, des laboratoires publics ou privés.



Distributed under a Creative Commons Attribution 4.0 International License

RESEARCH ARTICLE

Muc5b-deficient mice develop early histological lung abnormalities

Hélène Valque^{1,*‡}, Valérie Gouyer^{1,‡}, Catherine Duez², Christophe Leboeuf³, Philippe Marquillies², Marc Le Bert⁴, Ségolène Plet¹, Bernhard Ryffel^{4,5}, Anne Janin³, Frédéric Gottrand¹ and Jean-Luc Desseyn^{1,§}

ABSTRACT

Gel-forming mucins are the main organic component responsible for physical properties of the mucus hydrogels. While numerous biological functions of these mucins are well documented, specific physiological functions of each mucin are largely unknown. To investigate *in vivo* functions of the gel-forming mucin Muc5b, which is one of the major secreted airway mucins, along with Muc5ac, we generated mice in which Muc5b was disrupted and maintained in the absence of environmental stress. Adult Muc5b-deficient mice displayed bronchial hyperplasia and metaplasia, interstitial thickening, alveolar collapse, immune cell infiltrates, fragmented and disorganized elastin fibers and collagen deposits that were, for approximately one-fifth of the mice, associated with altered pulmonary function leading to respiratory failure. These lung abnormalities start early in life, as demonstrated in one-quarter of 2-day-old Muc5b-deficient pups. Thus, the mouse mucin Muc5b is essential for maintaining normal lung function.

KEY WORDS: Gel-forming mucin, Knockout, Young mice, Respiratory distress

INTRODUCTION

Mucus gel is the first line of defense in the lung. Gel-forming mucins are high-molecular-weight macromolecules that make up the major organic component of mucus. These molecules are heavily *O*-glycosylated and dimerize through their carboxy-terminal region and polymerize through their amino-terminal region. Long polymers are secreted at the cell surface and form mucus gel when in contact with water (Thornton et al., 2008). The central region of gel-forming mucins is enriched with proline and hydroxyl amino acids (Ser/Thr/Pro regions) and is extensively *O*-glycosylated. Five gel-forming mucins, MUC2, -6, -5AC, -5B and -19, have been cloned and characterized and are highly conserved between humans and rodents. They all contain a large exon encoding the Ser/Thr/Pro region.

¹LIRIC UMR 995; Univ. Lille; Inserm; CHU Lille, F-59045 Lille, France. ²CIIL Inserm U1019; CNRS UMR 8204; Institut Pasteur de Lille; Univ. Lille, F-59019 Lille, France.

³Inserm UMR_S 1165; Université Paris-Diderot, Institut Universitaire d'Hématologie, AP-HP-Hôpital Saint Louis, F-75010 Paris, France. ⁴CNRS UMR 7355, University of Orleans, Laboratory of Experimental and Molecular Immunology and Neurogenetics (INEM), F-45071 Orleans, France. ⁵IDM, University of Cape Town, South Africa.

*Present address: Biologie Servier, 905 Route de Saran, F-45520 Gidy, France.

‡These authors contributed equally to this work

§Author for correspondence (jean-luc.desseyn@inserm.fr)

© V.G., 0000-0002-4223-7060; C.D., 0000-0002-2327-1095; C.L., 0000-0002-6537-0550; B.R., 0000-0003-2897-8230; A.J., 0000-0002-9595-6261; F.G., 0000-0002-5290-0436; J.-L.D., 0000-0001-6876-8049

This is an Open Access article distributed under the terms of the Creative Commons Attribution License (<https://creativecommons.org/licenses/by/4.0>), which permits unrestricted use, distribution and reproduction in any medium provided that the original work is properly attributed.

Received 17 July 2019; Accepted 16 October 2019

In lung, the mucus layer covers and protects the cell surface of the airway epithelium and traps exogenous particles and microorganisms for mucociliary clearance. In humans, MUC5AC is secreted by goblet cells, whereas MUC5B is secreted by submucosal glands. MUC5B is also secreted by the salivary glands, nasal mucosa, lacrimal glands, gallbladder, middle ear, submucosal glands of the trachea and esophagus, and the epithelium and glands of the endocervix. A similar pattern of expression was found in mouse tissues (Portal et al., 2017a; Valque et al., 2011) with the early expression of *MUC5B* during human development (Buisine et al., 1999, 2000) and in mouse lungs at embryonic day (E)12.5 or earlier (Portal et al., 2017a).

The redundancy of the two gel-forming mucins in the lung make it difficult to understand the precise function of each mucin. Dysregulation of *MUC5B* expression has been reported in airway diseases (Fahy and Dickey, 2010; Rose and Voynow, 2006). Genetic polymorphism of the human *MUC5B* promoter sequence has been associated with diffuse panbronchiolitis and mucous hypersecretion (Kamio et al., 2005). A single nucleotide polymorphism in the promoter region of the *MUC5B* gene has been linked to the development of familial interstitial pneumonia and sporadic idiopathic pulmonary fibrosis (Fingerlin et al., 2013; Noth et al., 2013; Seibold et al., 2011; Stock et al., 2013; Zhang et al., 2011) and it has been suggested that this polymorphism might be associated with overexpression of *MUC5B* in the lung. More recently, a major function of MUC5B has emerged based on the findings of a unique *in vivo* study showing that MUC5B but not MUC5AC is essential for mucociliary clearance (Roy et al., 2014).

We generated a mouse strain genetically deficient for Muc5b by deleting exons 12 and 13 of the 49 exons of the gene, exon 31 being the large central exon that codes for the Ser/Thr/Pro region (Desseyn, 2009). Here we report that no homozygous mice deficient for Muc5b were obtained, while heterozygous mice were viable and fertile. Mice with Muc5b haplo-insufficiency displayed early lung inflammation that could lead to respiratory distress. In view of the embryoletality of full gene deletion, lung-restricted Muc5b-deficient mice (homozygous and heterozygous) were generated, which showed abnormalities of bronchial structure that could also lead to respiratory distress.

RESULTS

Absence of Muc5b is embryolethal

A targeting construct was developed to flank exons 12 and 13 of the *Muc5b* gene by the loxP sites (Figs S1 and S2) located at the 5' part of the gene, upstream of the large exon encoding the Ser/Thr/Pro region. Mice with the floxed *Muc5b* allele were intercrossed with the Cre deleter transgenic line MeuC40. Mice carrying the Cre transgene and the Muc5b-floxed allele were backcrossed with C57BL/6 wild-type (WT) mice, and their progeny with the Muc5b-floxed allele but without the Cre transgene were retained and studied. Muc5b^{ko/+} mice were fertile. Body mass was identical between Muc5b^{ko/+} and control

WT mice ($Muc5b^{+/+}$). Analysis of the progeny from 19 intercrosses of heterozygous $Muc5b^{ko/+}$ mice (41 litters, 292 mice) was not consistent with Mendelian ratios as we observed 80 WT (27.4%) mice, 212 $Muc5b^{ko/+}$ (72.6%) mice and no $Muc5b^{ko/ko}$ progeny ($P < 0.0001$). No homozygous embryos or resorption sites from E8 until birth (six pregnant mothers) were found, suggesting that the complete tissue-disruption of both $Muc5b$ alleles was embryolethal at a very early stage of embryogenesis. We then investigated the pulmonary phenotypes of the heterozygous systemic $Muc5b^{ko/+}$ mice and lung-specific $Muc5b^{ko/ko}$.

Some adult $Muc5b^{ko/+}$ mice develop severe respiratory distress and abnormal lung histology

Of 63 $Muc5b^{ko/+}$ mice analyzed, 12 (19%) displayed severe respiratory distress between 12 and 22 weeks of age including hunched posture, reduced locomotor activity, polypnoea (Movie 1), a thumping respiration, squeaks and a discreet cough (Movie 2), while neither WT mice nor $Muc5b$ -floxed mice displayed this pulmonary phenotype. $Muc5b^{ko/+}$ mice developing respiratory distress displayed a dramatically abnormal lung morphology as illustrated in Fig. 1. Lung sections were stained with Mason's Trichrome stain, which readily identifies, for $Muc5b^{ko/+}$ mice, deposition of collagen (blue color), a feature of pulmonary fibrosis. We also noted fibrin deposition, epithelial hyperplasia, interstitial inflammation and collapsed alveoli in comparison to WT mice (Fig. 1). A decrease of interstitial vessel

density was observed, as visualized by a reduction in CD31 endothelial positive cells (Fig. 1). The inflammatory cell infiltrate was also increased in $Muc5b^{ko/+}$ mice around the bronchi and vessels and was composed of both mononuclear and polynuclear cells (Fig. 1). Airways were lined with cuboidal shaped cells in $Muc5b^{ko/+}$ mice showing bronchial metaplasia and hyperplasia (Fig. 2A). Increased $Muc5b$ staining was observed in the bronchi and bronchioles of adult mice suffering from respiratory distress in comparison to WT control mice (Fig. 2B). Obstructive $Muc5b$ -positive material was occasionally observed in the lumen of the bronchioles in $Muc5b^{ko/+}$ mice. In WT mice, Club cell secretory protein (CCSP) was present throughout the cytoplasm, whereas it was limited to the apical portion of Club cells in $Muc5b^{ko/+}$ mice, consistent with a morphological change in the Club cells (Fig. 2C) in agreement with Boucherat et al. (2012). Total cell number of bronchial epithelium was increased ($P = 0.008$; Fig. 2D) in $Muc5b^{ko/+}$ mice with respiratory distress. We then assessed the number of proliferative cells by immunofluorescence using anti-PCNA antibodies; this was significantly higher in $Muc5b^{ko/+}$ mice than in $Muc5b^{+/+}$ mice ($P < 0.0001$; Fig. S3A,B) in agreement with epithelial cell hyperplasia. Bronchi of $Muc5b^{ko/+}$ mice exhibited a decrease of CCSP-positive Club cells ($P = 0.03$; Fig. 2D) with an increase of $Muc5b$ -positive Club cells for $Muc5b^{ko/+}$ mice with respiratory distress ($P = 0.03$). No modification of the number of acetylated-tubulin (ACT)-positive ciliated cells were observed (Fig. 2C,D).

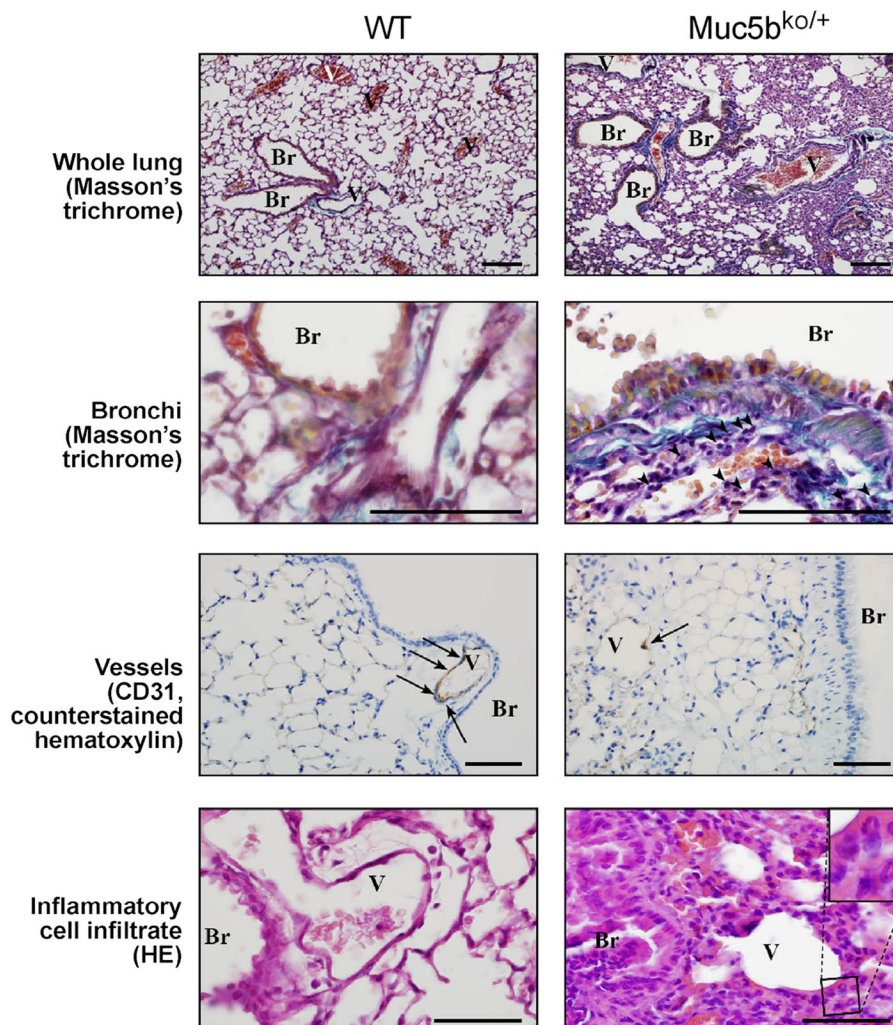


Fig. 1. Representative histological analysis of adult lung tissue showing altered lung morphology of mice with respiratory distress. Inflammatory cells under the bronchial epithelium are indicated with arrowheads. CD31-positive cells are indicated with arrows. The inflammatory cell infiltrate is composed of both mononuclear and polynuclear cells, as shown at higher magnification in the inset. WT, wild type; Br, bronchi; V, vessels. Scale bars: 50 μm .

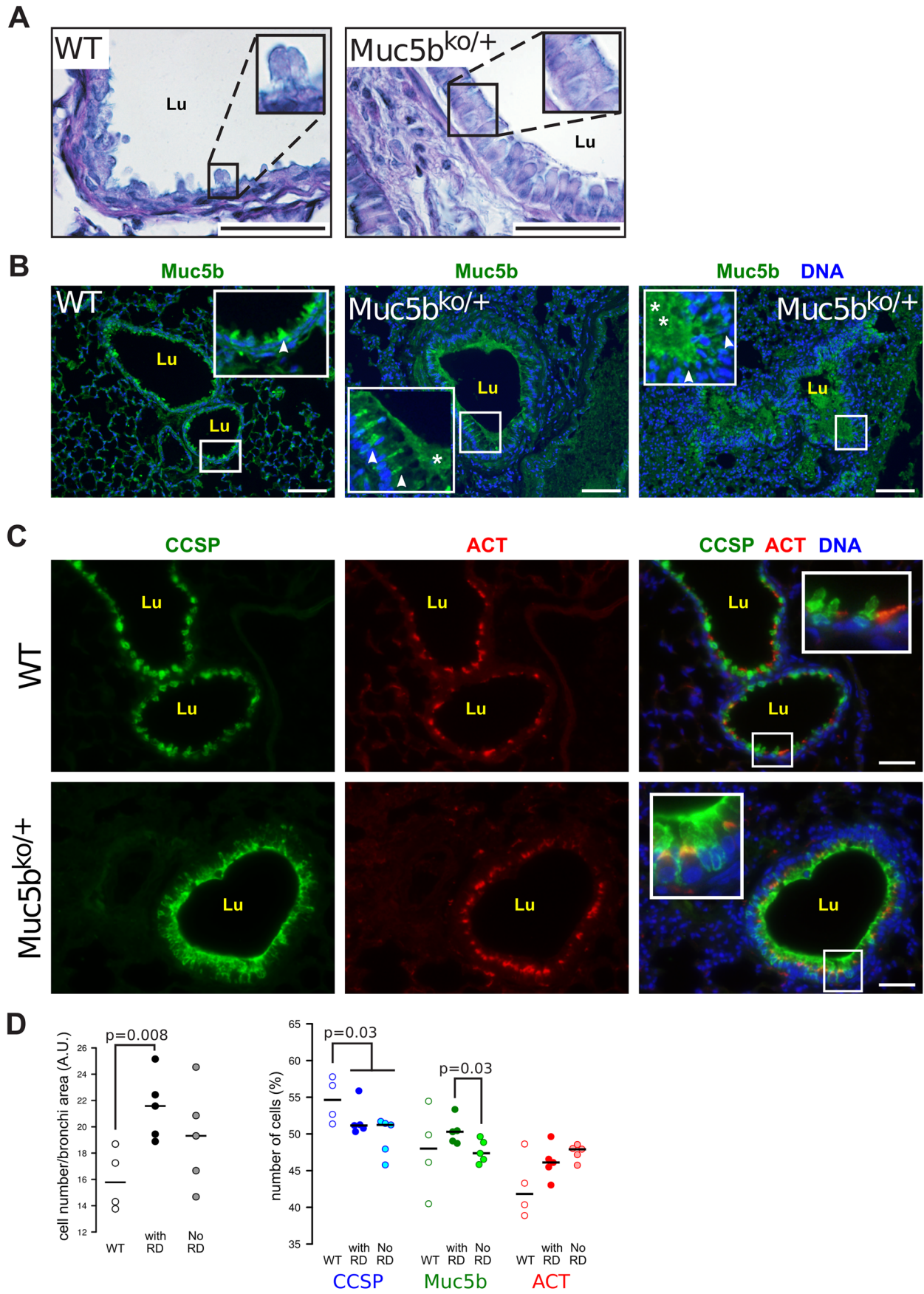


Fig. 2. See next page for legend.

Fig. 2. Histopathologic evidence of bronchial cell hyperplasia and goblet cell metaplasia. (A) Representative lung sections from adult WT and *Muc5b*^{ko/+} mice with respiratory distress stained with AB-PAS showing Club cell hyperplasia and metaplasia. Few goblet cells are visualized (AB-PAS+) in the WT mouse in comparison with the *Muc5b*^{ko/+} mouse. (B) Representative immunofluorescence of lung sections from WT (*n*=1) with few goblet cells (*Muc5b*⁺) and *Muc5b*^{ko/+} mice (*n*=2) showing overproduction of *Muc5b*, goblet cell hyperplasia (arrowheads) and mucus plug (*) in the lumen (Lu) of the bronchi in *Muc5b*^{ko/+}. (C) Representative immunofluorescence of lung sections stained with anti-CCSP and anti-ACT in *Muc5b*^{ko/+} mice in comparison with WT mice. *Muc5b*^{ko/+} mice displayed goblet cell hyperplasia and Club cell metaplasia as revealed in higher magnification in the insets. (D) Bronchial cell density normalized to the bronchi area of four WT and five *Muc5b*^{ko/+} mice with respiratory distress (RD) and five *Muc5b*^{ko/+} mice without RD. (D) CCSP+ (blue), *Muc5b*⁺ (green) and ACT+ (red) epithelial cells of bronchi (%) from four WT and five *Muc5b*^{ko/+} with RD, and five *Muc5b*^{ko/+} mice without RD. Six bronchi/mouse were assessed and analyzed using the Wilcoxon–Mann–Whitney test. Scale bars: 50 μ m.

In WT mice, elastin fibers, which play a mechanical role in supporting and maintaining the lung tissue structure (Rocco et al., 2009), ran longitudinally along the alveolar walls and were present at the tips of the alveolar septa of WT mice. By contrast, elastin fibers in the lungs of *Muc5b*^{ko/+} mice appeared disorganized and fragmented, suggesting that the pulmonary tissue may be less elastic than in WT mice (Fig. S4A). Tight junctions play an important role in maintaining the epithelial barrier integrity in the lung. Because elevation of expression of tight junction proteins may represent a potential biological marker of lung injury severity (Jin et al., 2013), we examined by immunofluorescence the expression of occludin as one major tight junction protein. Occluding expression was increased in the lung of *Muc5b*^{ko/+} mice supporting airway injury.

To quantify histological changes including meta- and hyperplasia, inflammatory cell filtration of the parenchyma and fibrosis, lung sections were stained and coded, and then blindly scored (Madtes et al., 1999). The mean score was significantly higher ($P=0.008$) in *Muc5b*^{ko/+} mice with respiratory distress than in WT mice (Fig. 3A). In *Muc5b*^{ko/+} mice, α -smooth muscle actin (ASMA) secreting extracellular matrix component was increased around large (data not shown) and small airways ($P=0.004$; Fig. 3B,C). ASMA was also accumulated in the alveolar septae (Fig. 3D) suggesting the presence of activated fibroblasts. Overall,

these data suggest that deletion of one *Muc5b* allele may lead to severe respiratory distress, lung damage and airway remodeling and affects lung histology with hyperplasia and metaplasia of bronchial cells and with fibrotic signs.

Adult *Muc5b*^{ko/+} mice without respiratory distress exhibit altered pulmonary function

To determine whether mice without signs of respiratory distress had abnormal lungs, we studied 8–16-week-old mice. The lung morphology of 109 *Muc5b*^{ko/+} mice was analyzed macroscopically and 49 mice (45%) displayed an abnormal lung morphology, characterized by the presence of abnormal gray areas and areas of necrosis and hemorrhage (Fig. S5A), which were smaller than those present for mice with respiratory distress (Fig. S5B). Histological quantification showed that the lung score was significantly higher ($P=0.018$, Fig. 3A) for *Muc5b*^{ko/+} mice without respiratory distress than for WT mice. We then assessed the deposition of ASMA by immunohistochemistry followed by quantification of immunostaining. Increased deposition of ASMA was observed in the small bronchi of *Muc5b*^{ko/+} mice in comparison to WT mice ($P=0.018$; Fig. 3C) but the difference between mice with lung disease was not significant.

No macroscopic change was observed in other organs examined, with the exception of the salivary glands, since 13 of 51 (25%) *Muc5b*^{ko/+} mice exhibited atrophy of one salivary gland only (Fig. S5C). This organ was not investigated further.

To demonstrate functional abnormalities in the lungs from young *Muc5b*^{ko/+} mice, the lung mechanics of 10 WT/*Muc5b*^{+/+} and 10 *Muc5b*^{ko/+} 6-week-old male mice were analyzed using Flexivent at baseline and after metacholine administration. No significant baseline changes in dynamic resistance, Newtonian resistance, elastance, tissue damping and tissue elastance were observed in *Muc5b*^{ko/+} mice compared to WT mice (Fig. 4). We then administered metacholine, a smooth muscle agonist, to assess the effects of transient bronchoconstriction. An increase in doses of metacholine caused a decrease in maximum dynamic resistance in *Muc5b*^{ko/+} mice compared to WT mice, reflecting a decrease in level of constriction in the lungs (Fig. 4). Moreover, increasing the doses of metacholine caused a significant decrease in Newtonian resistance, which represents the resistance of the central airways in the constant phase model, elastance, tissue damping and tissue elastance in *Muc5b*^{ko/+} mice compared to WT mice.

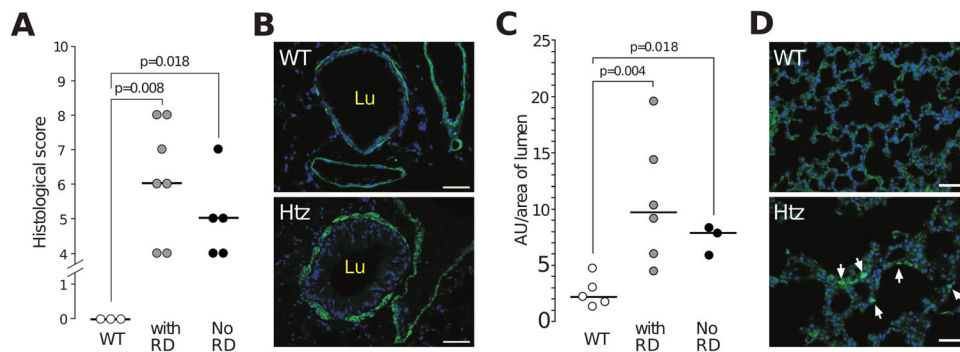


Fig. 3. Increased histological score and expression of ASMA in the lungs of heterozygous adult mice. (A) Histological score of three WT mice, seven heterozygous mice with respiratory distress (RD) and five heterozygous mice without RD. (B) Representative immunofluorescence pictures of paraffin-embedded lung sections with anti-ASMA antibody. An increased in ASMA expression was observed around the bronchi of heterozygous (Htz; *Muc5b*^{ko/+}) mice. (C) ASMA fluorescence was evaluated in the lungs of five WT (five bronchi/mouse), six Htz mice with RD (four or five bronchi/mouse) and three Htz mice without RD (four or five bronchi/mouse). Data were analyzed using the Wilcoxon–Mann–Whitney test. (D) Representative immunofluorescence pictures with anti-ASMA antibody showing accumulation of ASMA (arrows) in the alveolar space of Htz mice. Scale bars: 50 μ m.

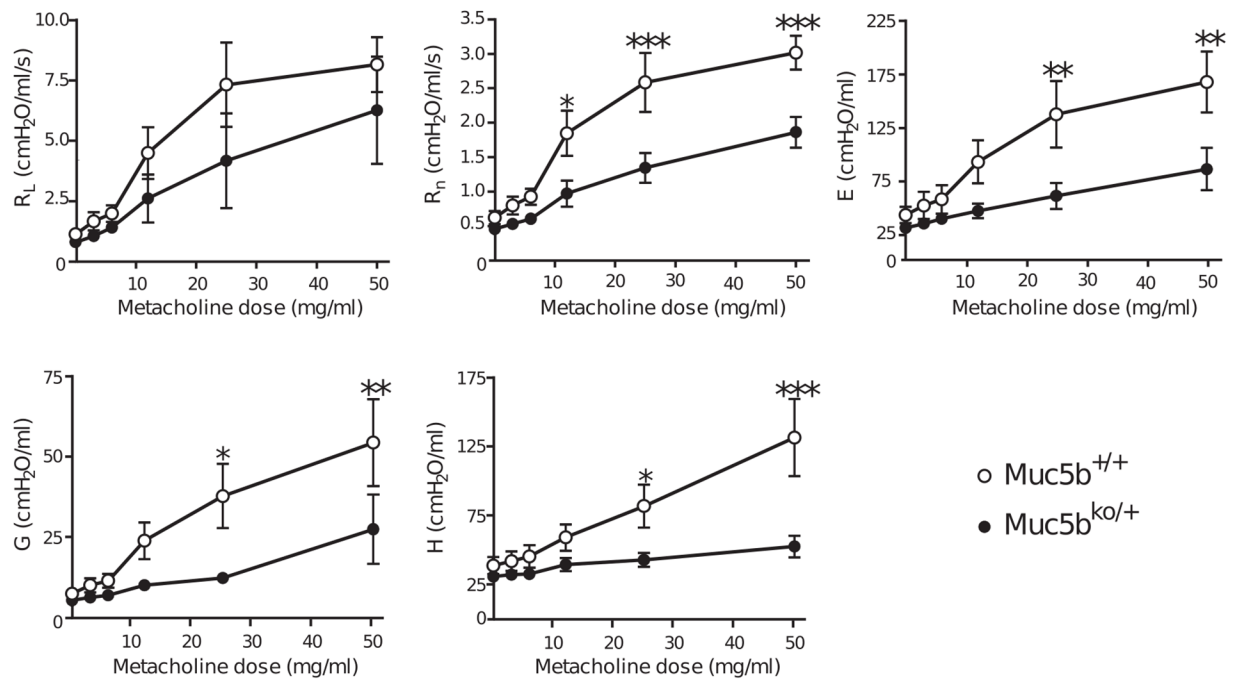


Fig. 4. *Muc5b*^{ko/+} adult mice with no respiratory distress have altered lung function. The lung mechanics of eight WT (white circles) and eight *Muc5b*^{ko/+} (black circles) mice were analyzed using Flexivent. No modification of baseline values of lung resistance (R_L), Newtonian resistance (R_n), elastance (E), tissue damping (G) and tissue elastance (H) was observed in WT or *Muc5b*^{ko/+} mice. However, an increase in metacholine doses caused a decrease in R_L , R_n , E , G and H in *Muc5b*^{ko/+} mice. * $P=0.01$; ** $P=0.001$; *** $P=0.0001$. Data were analyzed using two-way analysis of variance.

Adult *Muc5b*^{ko/+} mice show increased lung inflammation in the absence of respiratory failure

As an inflammatory cell infiltrate was observed in both the lungs of 8–16-week-old *Muc5b*^{ko/+} mice (data not shown) and in older mice with lung disease, we assessed the levels of the pro-inflammatory chemoattractant chemokine CXCL1/KC in bronchoalveolar lavage (BAL) of adult WT and *Muc5b*^{ko/+} mice, which displayed no signs of respiratory insufficiency. While no CXCL1/KC was found in the 13 WT mice studied, CXCL1/KC was detectable in the BAL of 6/23 *Muc5b*^{ko/+} mice (26%; Fig. 5).

Pulmonary abnormalities appear early in life

To determine whether the lung defects in *Muc5b*^{ko/+} mice may appear early in life, we measured the CXCL1/KC level in whole

lungs of 10 WT and 25 *Muc5b*^{ko/+} 2-day-old pups. A baseline CXCL1/KC level was detected in the lungs of WT mice which was significantly higher in *Muc5b*^{ko/+} mice as 6/25 (24%) *Muc5b*^{ko/+} mice displayed high levels of CXCL1/KC ($P=0.03$, Fig. 6A). Histology revealed that the lungs of 2-day-old *Muc5b*^{ko/+} pups had pathological changes at different levels (Fig. 6B). On whole-lung sections, *Muc5b*^{ko/+} mice had a denser parenchyma, with condensed alveolae, congested vessels and an inflammatory infiltrate. The bronchial epithelium of *Muc5b*^{ko/+} mice was enlarged with an increased number of mucus-containing epithelial cells and numerous inflammatory cells in the lamina propria. Fibrin deposits, which are signs of tissue damage in lung injury, were found in the subepithelial region with an increased inflammatory cell infiltrate with abundant neutrophils in *Muc5b*^{ko/+} mice around the bronchi and vessels.

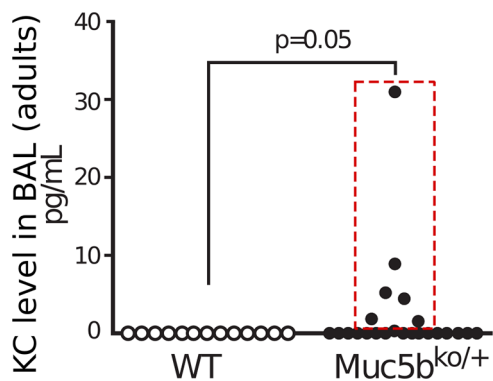


Fig. 5. Inflammatory chemokine KC was elevated in lungs of *Muc5b*^{ko/+} adult mice. Chemokine KC level was evaluated by ELISA in bronchoalveolar lavage (BAL) from 13 WT and 23 *Muc5b*^{ko/+} adult mice with no respiratory distress. The white circles emphasize seven of 23 (30.4%) mice with detectable KC levels. Data were analyzed using Pearson's Chi² test.

Club cell-restricted *Muc5b*-deficient mice have abnormal bronchi

Because *Muc5b* is not just expressed in the lung, the *Muc5b* mutation may cause an ectopic phenotype leading to a lethal phenotype. We then restricted the deletion of *Muc5b* in the lung using *CCSP* transgenic Cre mice crossed with *Muc5b*-floxed mice (Bertin et al., 2005). *CCSP*, also referred to as *CC10* and *SCGB1A*, is transcriptionally activated within the bronchi of neonatal mouse lungs starting at E16.5 (Reynolds et al., 2002). *Muc5b*-floxed mice on one or two alleles were viable and fertile. No respiratory distress was observed in the 30 mice that were inspected by histology and which carried the *CCSP*-Cre transgene and no *Muc5b*-floxed allele (sacrificed between 40 and 50 weeks of age). Of the 124 mice studied and carrying the *CCSP*-Cre transgene and with at least one *Muc5b*-floxed allele, 27 (22%) were sacrificed as they showed signs of respiratory distress. Mice with conditional lung deletion of one or two *Muc5b* alleles, termed *Muc5b*^{lung ko}, developed respiratory failure (Table 1; $P<0.0001$). The frequency of respiratory failure was

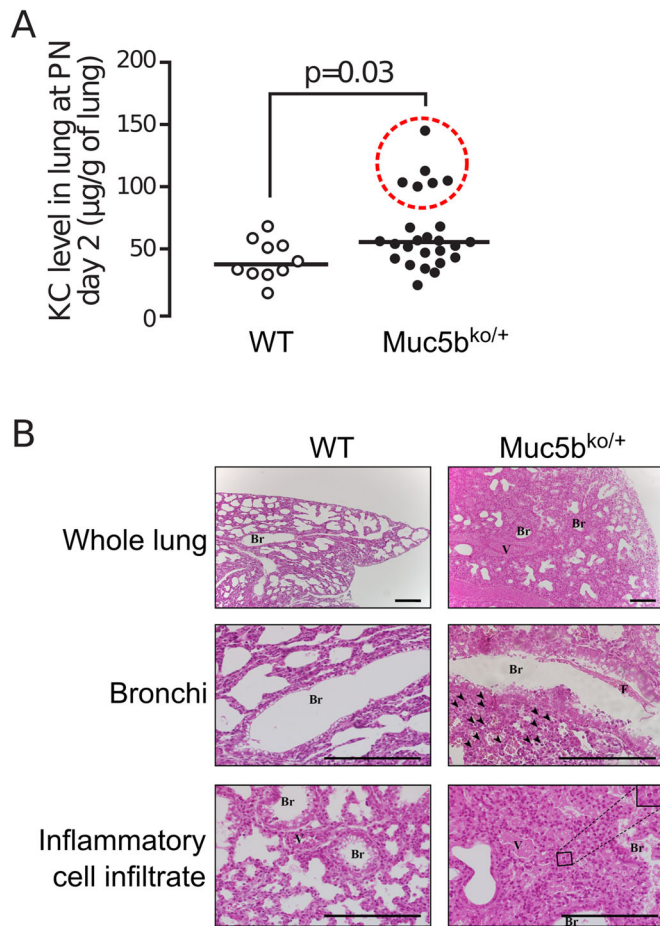


Fig. 6. Inflammatory chemokine KC was elevated in lung of *Muc5b*^{ko/+} pup mice. (A) Chemokine KC level was evaluated by ELISA in the lungs of 10 WT and 25 *Muc5b*^{ko/+} mice on post-natal (PN) day 2. The dotted red circle emphasizes six of the 25 *Muc5b*^{ko/+} pups with high KC levels. Data were analyzed using the Wilcoxon–Mann–Whitney test. (B) Microscopic features of newborn mice on representative whole-lung sections. Arrowheads denote inflammatory cells. Br, bronchi; V, vessels; F, fibrin deposits on the epithelial surface of the bronchial lumen. The higher magnification in the inset shows polymorphonuclear cells. Scale bars: 50 µm.

increased when CCSP-Cre:*Muc5b*-floxed mice were between 20 and 30 weeks old (Fig. S6) with a higher probability in mice that carried the two mutated alleles (65% versus 35% for a single mutated allele).

Lung histology revealed that the walls of the bronchi and bronchioles of 3-week-old *Muc5b*^{lung ko} mice but not adult mice

Table 1. Respiratory distress before 50 weeks of age

| Genotype | Total mice | Dead mice [§] | Respiratory distress | <i>P</i> -value [#] |
|--|------------|------------------------|----------------------|------------------------------|
| <i>Muc5b</i> ^{+/+} : <i>Cre</i> ^{neg} ^a | 45 | 1 (2) | 0 (0) | 0.004 |
| <i>Muc5b</i> ^{+/+} : <i>Cre</i> ^{pos} ^b | 30 | 0 (0) | 0 (0) | <0.004 |
| <i>Muc5b</i> -floxed ^c : <i>Cre</i> ^{neg} | 113 | 3 (3) | 0 (0) | <0.0001 |
| <i>Muc5b</i> -floxed ^c : <i>Cre</i> ^{pos} | 124 | 0 (0) | 27 (22) | |

^a, CCSP-Cre; ^a, negative; ^b, positive; ^c, homozygous and heterozygous, [#], Pearson's Chi² test for respiratory distress with *Muc5b*-floxed:*Cre*-positive mice; [§], one mouse out of the 45 *Cre*-negative mice and carrying two WT-*Muc5b* alleles and three mice out of the 113 *Cre*-negative mice carrying either one or two *Muc5b*-floxed alleles were killed due to signs of pain without respiratory distress or were found dead in their cage. neg, negative; pos, positive.

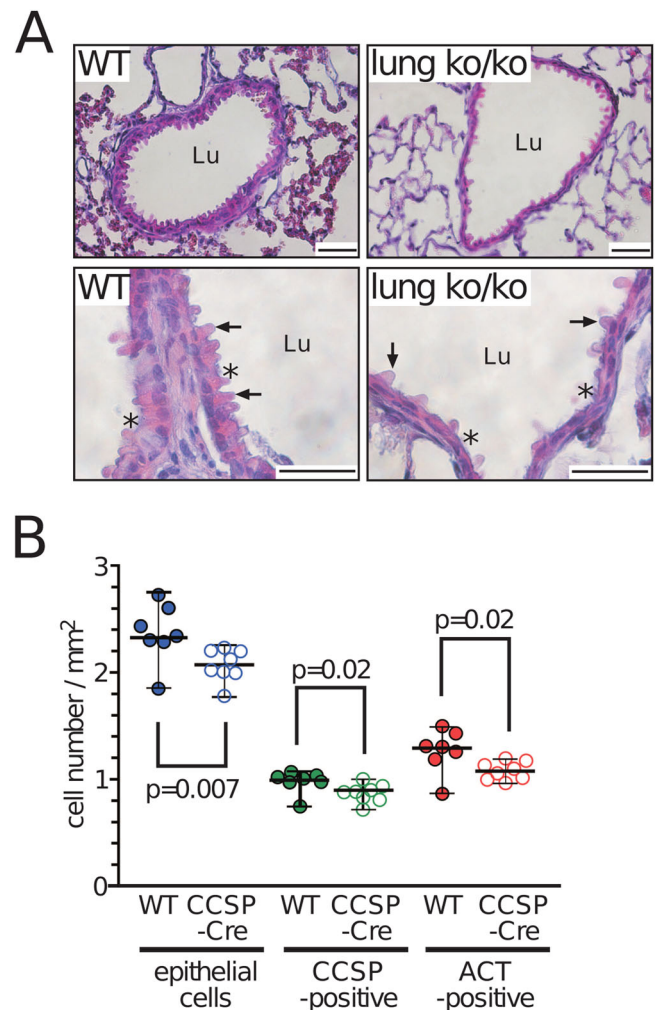


Fig. 7. Histological analysis of *Muc5b*^{lung ko/ko} mice. (A) Representative histological analysis of paraffin-embedded lung sections of adult WT and *Muc5b*^{lung ko/ko} mice stained with Hematoxylin and Eosin. *Muc5b*^{lung ko/ko} mice displayed an abnormal morphology with depleted regions from epithelial cells. Asterisks indicate ciliated cells and arrows indicate Club cells. (B) Total cell number (blue), number of CCSP-positive (green) and ACT-positive (red) epithelial cell walls of bronchi from seven WT (filled circles) and eight *Muc5b*^{lung ko} (CCSP-Cre; open circles) mice. Data were analyzed using the Wilcoxon–Mann–Whitney test. Scale bars: 50 µm.

were thinner than those of control floxed mice (CCSP-Cre-negative) with a flattened appearance in the ciliated cells (Fig. 7A). We then determined the total number of epithelial cells/mm² of the cell wall of the bronchi of CCSP-positive cells and the number of ACT-positive cells by immunohistochemistry (Fig. S7). Reduced numbers of epithelial cells (*P*=0.007), CCSP-positive cells (*P*=0.02) and ACT-positive cells (*P*=0.02) were observed in *Muc5b*^{lung ko} mice (Fig. 7B; Fig. S7). As expected, low levels of *Muc5b* polypeptide were produced in *Muc5b*^{lung ko}/CCSP-Cre mice when both alleles were floxed (heterozygous mice not shown) in contrast to homozygous floxed mice that were CCSP-Cre-negative (Fig. S7).

DISCUSSION

The two polymeric mucins, MUC5AC and MUC5B, represent the main gel-forming mucins in the mucus layer of the lung (Kesimer et al., 2013). The precise function of each mucin is not well understood. Numerous reports link a dysregulation of the gel-forming

mucin MUC5B in human lung diseases like asthma, cystic fibrosis, diffuse panbronchiolitis and familial and sporadic and interstitial pneumonia idiopathic pulmonary fibrosis (Fahy and Dickey, 2010; Kamio et al., 2005; Rose and Voynow, 2006; Seibold et al., 2011; Zhang et al., 2011). In the current study, we characterized histological and functional parameters in lungs of mice that are genetically Muc5b-deficient. Alterations to lung, salivary glands and during embryogenesis are consistent with the distribution of Muc5b within WT mice (Portal et al., 2017a; Roy et al., 2014). The phenotype between the Muc5b^{ko/+} mice and the CCSP-Cre:Muc5b-floxed mice are not fully similar. Several reasons may explain this difference. First, the CCSP gene is abundantly expressed in the developing airway and trachea at E18.5, but is attenuated after birth and seems not to be expressed before E16.5 (Reynolds et al., 2002). Second, we cannot rule out an ectopic expression of the the CCSP-Cre transgene used that has also been reported to be expressed in the kidney and the testis. Furthermore, all tissues were not examined. Last, it has been reported that the CCSP-Cre transgene exhibited low efficiency for the *Igf1r*-floxed mouse (López et al., 2016) suggesting that a non-uniform homologous recombination of the Muc5b-floxed sequence may have occurred.

Bronchi are lined by a single columnar epithelium consisting of few goblet cells and ciliated and Club cells. Club cells can differentiate into ciliated and goblet cells. Club cell metaplasia/hyperplasia, to goblet cells, is a hallmark of lung damage in many airway diseases (see Tompkins et al., 2009). Goblet cell metaplasia and hyperplasia in bronchi of Muc5b^{ko/+} mice were evident in Alcian Blue-Periodic Acid Schiff (AB-PAS) staining and immunohistochemical studies using anti-CCSP and anti-PCNA antibodies suggesting epithelial remodeling and hypertrophy in agreement with an increase production of Muc5b observed by immunohistochemistry (Fig. 2) and an increase of the inflammatory state. Invalidation of both alleles in lung only, starting at E16.5, led to minimal or no evidence of goblet cell metaplasia/hyperplasia. However, one-fifth to one-quarter of lung-specific Muc5b-deficient mice also exhibited signs of respiratory distress, in agreement with previous reports showing the essential role of Muc5b for mucociliary clearance (Livraghi-Butrico et al., 2017; Roy et al., 2014). This suggests that the respiratory distress observed for conditional and whole-tissue knockout mice comes from two distinct mechanisms and that Muc5b may play an important role in Club cell differentiation.

Both Muc5b^{ko/+} with and without respiratory distress showed immune cell infiltrates, tissue injury and remodeling, differentiation of fibroblasts to myofibroblasts (seen by ASMA expression by activated fibroblasts in the lung parenchyma) and increased extracellular matrix deposition such as collagen, which may explain the impaired ventilation and respiratory insufficiency we observed. These modifications are features of pulmonary fibrosis (Camelo et al., 2014; Li et al., 2011; Phan, 2002; Scotton and Chambers, 2007; Seibold et al., 2011; Selman and Pardo, 2002; Wuyts et al., 2013; Wynn, 2011), whereas airflow obstruction with progressive deterioration of lung function, mucus cell hyperplasia and immune cell infiltrates are hallmarks of chronic obstructive pulmonary disease (Jeffery, 1998). We cannot rule out that hypertrophy and hyperplasia of the existing airway smooth muscle cells can also explain the increase in airway smooth muscle mass as observed in airway remodeling following lung injury (Durrani et al., 2011). Furthermore, whether or not Muc5b deficiency may lead to fibrosis was not directly demonstrated in our study and remains to be assessed.

Not all Muc5b-mutated mice developed lung abnormalities, outlining a complex phenotype; 19% of Muc5b^{ko/+} adult mice and

22% of Club cell-restricted Muc5b-deficient adult mice that were 40 weeks old or less suffered from severe respiratory distress. In the absence of respiratory distress, 45% of adult Muc5b^{ko/+} mice showed abnormal lung morphology and 26% showed abnormal levels of the pro-inflammatory chemokine CXCL1/KC in BAL, consistent with inflammation in the lungs (Fig. 5). We have considered the possibility that abnormal pulmonary phenotype occurs early in life. At 2 days of age, 24% of Muc5b^{ko/+} pups already displayed abnormally high levels of CXCL1/KC (Fig. 6A), although it is not possible to determine if the pups that displayed elevated CXCL1/KC levels corresponded to mice that would develop respiratory distress at adulthood.

Agents responsible for the initiation of the lung phenotype are unknown. In lung fibrosis, it is believed that repeated lung injury could initiate inflammation cascades followed by overproduction of pro-fibrotic cytokines. Among the environmental triggers, viruses (Wuyts et al., 2013) in our protected animal facility that do not belong to the Federation of European Laboratory Animal Science Associations (FELASA) list (Mähler et al., 2014) could be suspected to be initiators of mouse fibrosis. Another possibility is mouse exposure to dust from bedding such as birch and hardwood. This has been reported in a case study to increase the risk of idiopathic pulmonary fibrosis in humans (Gustafson et al., 2007). Further studies will be needed to investigate these hypotheses.

The development of a first Muc5b-deficient mouse line, term Muc5b^{-/-}, has been reported (Roy et al., 2014). The phenotype of Muc5b^{-/-} mice differs from that described in this current study. Muc5b^{-/-} mice showed impaired growth, survival (~40% at 12 months old) and mucociliary clearance accompanied by abnormal breathing and material obstruction impeding the airflow in the upper airways. Inflammatory infiltrates and viable bacteria in the lung, especially streptococci and staphylococci, were also common in these mice. In the current study, we showed abnormal breathing and inflammatory infiltrates in Muc5b^{ko/+} mice and lung-deficient Muc5b mice, but we never found any obstructive material during autopsy or culturable bacteria in the lung (data not shown) suggesting that the two different strategies used to mutate Muc5b and/or the animal environment may explain the variable phenotypes observed in the two models. Variable penetrance is common among mice deficient for the same gene and sometimes the phenotype may differ greatly, as reported, for example, for genetically deficient mouse models for Nedd4-2, which has been shown to be essential for fetal and postnatal lung function (Boase et al., 2011) and for CCSP-deficient mouse models (Reynolds et al., 1999; Zhang et al., 1997). The *Muc5b* gene has been mapped with the three other mucin genes, *Muc2*, *Muc6* and *Muc5ac*, to mouse chromosome 7 band F5 in a cluster of genes conserved in humans (Desseyn and Laine, 2003). The genomic organization and the deduced polypeptide sequence of the genes (amino- and carboxy-terminal regions), especially for *MUC5AC*, exhibit remarkable sequence similarities (Buisine et al., 1998; Desseyn et al., 1997b, 1998, 2000). We cannot exclude cis-effects resulting from genetic modification itself of *Muc5b* and neighborhood effects to other adjacent unrelated genes or to *Muc5ac*, which is, with *Muc5b*, a major gel-forming mucin in the lung.

Environmental conditions and variable genetic background in the two approaches may explain in part the different predisposition of the two models to development of disease (DeMayo, 1999; Reynolds et al., 1999). The two different gene-targeting strategies chosen to obtain Muc5b^{-/-} (team of C. M. Evans, Roy et al., 2014) and Muc5b^{ko/+} (and Muc5b^{lung ko}, current investigation) mice

may have yielded the different phenotypes. Because we deleted exons 12 and 13 and not the initiating transcription site, we cannot rule out that they are aberrant transcripts generating a hypomorph phenotype as previously reported for other genetically deficient mouse models (DeMayo, 1999) or truncated peptides translated from aberrant transcripts. We cannot rule out that other splicing events may have occurred too. Studies to understand the basis for differential phenotypes observed for the works on *Muc5b*-deficient mice should help to better understand the physiological functions of mucin. The recent creation in our laboratory of a new conditional *Muc5b*-deficient mouse by floxing the last two exons of the gene (Portal et al., 2017b) should also confirm in the near future that the lack of *Muc5b* leads to pulmonary distress without any bacterial infection of the lung.

MATERIALS AND METHODS

Generation of transgenic mice

Muc5b gene cloning

The mouse *Muc5b* gene has been mapped on chromosome 7 band F5 in a cluster of genes conserved between humans and mice (Desseyn and Laine, 2003). The two exonic oligonucleotides 5'-GACGTCTCCGCTTCCC-TGGCCT-3' and 5'-TCTTCATTCCACAGGAAGGT-3', respectively, were designed from the *Muc5b* gene (Chen et al., 2001). These two primers flank intron 3 and were used to amplify genomic DNA extracted from mouse embryonic stem (ES) cells by PCR. A genomic sequence of 437 bp was cloned and sequenced showing that it contained an intron of 144 bp belonging to *Muc5b*. The 437 bp insert was used as a probe to screen a mouse 129Sv bacterial artificial chromosome (BAC) clone library (Incyte Genomics). Two positive BAC clones were identified. One BAC clone was purchased and was shown to contain the full genomic sequence of *Muc5b* (data not shown). Both human and mouse *Muc5b* genes consist of 49 exons, with exon 31 being the largest [10.7 kb in humans (Desseyn et al., 1997a)], and encoding the *O*-glycosylated regions of mucin.

Targeting vector design

The general three-loxP strategy used to invalidate *Muc5b* is summarized in Fig. S1A,B. Deletion of exons 12 and 13 should lead to a frameshift introducing a premature stop codon. The loxP sequence (34 bp) was subcloned into the pKS+ plasmid (Stratagene) between the unique *EcoRI* and *XhoI* restriction sites. The *Muc5b* targeting construct utilized 5.5 kb and 3.9 kb genomic fragments of the 5'-end of *Muc5b* that flanked the *NheI* restriction site in intron 13 as the left and right arms, respectively. A unique loxP site was introduced in intron 11 and a blunted-*XhoI*-*XhoI* loxP-flanked neomycin expression phosphotransferase (NEO) cassette (Howe et al., 2006) was inserted in the blunted-*NheI* site of intron 13. A recombinant plasmid carrying three loxP sites with the same orientation was selected. Deletion of the genomic region carrying exons 12 and 13 with Cre recombinase should introduce a frameshift leading to a premature stop codon. The correct orientation of the three loxP sites was verified by transforming bacteria carrying the plasmid construct with a plasmid encoding Cre recombinase (New England Biolabs; Fig. S2). Plasmid DNA was then linearized using the unique *EcoRV* restriction site located within intron 17 and analyzed on a 0.6% agarose gel.

Transgenic mice

The targeting vector was linearized with *EcoRV* and digested using the *PvuII* restriction enzyme found twice in the pKS plasmid in order to excise the plasmid insert. The 10.6 kb insert was electroporated in CK35 ES cells (SEAT, Villejuif, France). The genomic DNA of ES cells and mouse tissues was extracted, purified and 10 µg of DNA was digested with *KpnI* and subjected to electrophoresis on a 0.8% agarose gel. DNA was transferred onto a nylon membrane (Roche Applied Science) and probed with the labeled PCR product described above. Probe hybridization was performed at 42°C overnight with shaking. Detection was carried out by chemiluminescence using an anti-digoxigenin Fab antibody and CDP-star according to the

manufacturer's instructions (Roche Applied Science). The 689 bp *Muc5b* probe was obtained by PCR amplification using the two oligonucleotides 5'-TGGGCATCCCACTTGCTG-3' (forward) and 5'-GTAGAGAGGGTCAACTGATGC-3' (reverse) and labeled with digoxigenin (DIG)-labeled 11-dUTP (Roche Applied Science). One positive ES cell clone was obtained (Fig. S1C) and microinjected. Chimeric male mice were obtained and intercrossed with C57BL/6 WT mice purchased from Charles River, France. The resulting offspring with the mutated *Muc5b* locus carrying three loxP sites and their progeny were kept in a specific pathogen-free animal facility. DNA extracted from tail biopsies was analyzed by PCR amplification using the two oligonucleotides 5'-GAGAGGCCTCCACTCTTTCTCCAAGC-3' (P1; forward) and 5'-CCAAATGTGCATGGCGTGAAATGAC-3' (P2; reverse) that flanked the loxP site located within intron 11. Heterozygous mice were intercrossed with the *MeuCre40* strain (C57BL/6 genetic background). *MeuCre40* genotyping was performed as described elsewhere (Leneuve et al., 2003). Pups carrying both the mutated *Muc5b* locus and the Cre sequence were bred with WT C57BL/6 mice. After two generations, mice without the Cre sequence but carrying the *Muc5b* allele deleted for exons 12 and 13 (*Muc5b*^{ko/+}) without the NEO cassette were kept and intercrossed. The *Muc5b* genotype of mice was determined by PCR amplification using the oligonucleotides P1 coupled to the oligonucleotide 5'-GAGAAGAAAGTCCCGGCCAGTGTGTTT-3' (P3; reverse) to amplify the knockout allele. Deletion of the selective cassette was performed using the primer P2 coupled to the specific NEO cassette oligonucleotide 5'-TGTTGTGCCAGTCATAGCCGAATAG-3' (P4; forward). Genotyping was confirmed by Southern blotting with the external 5' probe and an internal probe using the two oligonucleotides 5'-GTGGAGAGGCTATTCGGCTATG-3' and 5'-CTCTCAGCAATATCACGGGTAG-3' amplifying a 648 bp NEO nucleotide sequence. *Muc5b*^{ko/+} heterozygous mice were backcrossed for at least five generations into the C57BL/6 genetic background. *Muc5b* floxed mice that do not carry the *MeuCre40* transgene were also bred with CCSP-Cre mice to obtain lung-specific *Muc5b*-deficient mice (Bertin et al., 2005). The genotype of mice carrying CCSP-Cre was determined by PCR using the two oligonucleotides used to genotype the *MeuCre40* transgene.

Mice were maintained by breeding heterozygous mice after at least six backcrosses in C57BL/6 genetic background. In all experiments, mutated mice were compared with their WT littermates. The animal procedure followed in this study was in accordance with French Guidelines for the Care and Use of Laboratory Animals and with the guidelines of the European Union. The creation and use of the *Muc5b* floxed strain and progeny were approved by the French Biotechnologies Committee and registered under file number 5288.

Histology and immunohistochemistry

Mice were anesthetized by injection of 200 µl pentobarbital. The lungs and salivary glands were gently removed, rinsed in PBS and fixed in 4% paraformaldehyde in PBS for 20 h. Formalin-fixed tissues were dehydrated through a series of increasing ethanol washes and embedded in paraffin. Paraffin blocks were brought to room temperature and sectioned on a rotary microtome. 5 µm thick sections were floated onto water at 40°C before being transferred to Superfrost/Plus microscope slides (Thermo Fisher Scientific). Sections of paraffin-embedded lung tissue were dewaxed with xylene, rehydrated through a series of decreasing ethanol washes and stained with Hematoxylin and Eosin (H&E), AB-PAS and Masson's Trichrome for microscopic examination. For the elastin fiber study, sections were stained with orcein (Sigma-Aldrich). Tissue sections were analyzed blindly by two different pathologists unaware of the genotypes on a motorized Z-axis microscope (BX 61 Olympus, Tokyo, Japan), using epi-fluorescent light. Microscope pictures were obtained with a digital camera ColorView III using Olympus-SIS Cell F software (Olympus, Tokyo, Japan). For immunohistochemistry, sections of paraffin-embedded lung tissue were dewaxed with xylene and rehydrated through a series of decreasing ethanol washes and rinsed three times in PBS. To block non-specific binding, slides were incubated with 1% bovine serum albumin (BSA) in PBS for 45 min. The immunolabeled sections were dried and mounted with Mowiol mounting medium and stored at 4°C. Slides were incubated overnight at 4°C with antibodies against *Muc5b* (Valque et al., 2011) (1:50), CCSP (1:500; R42AP) (Ryerse et al., 2001),

occludin (1:100) (Invitrogen, 71-1500), proliferative cell nuclear antigen (PCNA; 1:100) (Abcam, PC10), α -smooth muscle actin (ASMA; 1:300) (Abcam, ab5694) or ACT (1:400) (Sigma-Aldrich, T7451) in PBS/1% BSA. For anti-PCNA and anti-ASMA antibodies, citrate buffer antigen retrieval was performed as described previously (Valque et al., 2012). For anti-occludin antibodies, protease antigen retrieval was performed according to manufacturer's instructions before BSA incubation. After three washes in PBS, slides were incubated with FITC-conjugated secondary antibodies (1:150) diluted in PBS/1%BSA for 2 h in a dark room at room temperature, rinsed three times in PBS and nuclei were counterstained with Hoescht 33258 (1:1000) for 5 min. For CD31 immunohistochemistry, chromogenic staining using horseradish peroxidase-3,3' diaminobenzidine (HRP-DAB) staining was performed using an anti-CD31 antibody (Abcam, ab8364) diluted 1:50 according to the manufacturer's instructions. For Muc5b, occludin and CD31 immunohistochemistry, lung sections of three control WT mice, seven 14–22-week-old Muc5b^{ko/+} mice with respiratory distress and five 10–16-week-old Muc5b^{ko/+} mice without respiratory distress were analyzed. Images were acquired and were minimally processed as described previously (Gouyer et al., 2010).

Bronchi with similar diameters from five WT mice (five bronchi/mouse), three Muc5b^{ko/+} mice (three to six bronchi/mouse) without respiratory distress and six Muc5b^{ko/+} mice with respiratory distress (four or five bronchi/mouse) were analyzed using an anti-ASMA antibody. ASMA immunofluorescence was measured using ImageJ software and expressed relative to the area of bronchial lumen. Five to seven bronchi per adult mouse with similar diameters from four WT, five Muc5b^{ko/+} with respiratory distress and five Muc5b^{ko/+} without respiratory distress were analyzed using anti-Muc5b, anti-CCSP and anti-ACT antibodies. Concerning lung-specific Muc5b knockout mice, bronchi with similar diameters from seven WT mice (five to seven bronchi/mouse) and from eight 3-week-old Muc5b floxed mice carrying the CCSP-Cre transgene (five to eight bronchi/mouse) were analyzed using anti-ACT and anti-CCSP antibodies. The area of the bronchial wall was determined using ImageJ software by subtracting the area of the bronchial lumen from the total area of the bronchus. Total epithelial cells from bronchi, Muc5b-immunopositive (goblet cells), CCSP-immunopositive cells (Club cells), ACT-immunopositive cells (ciliated cells) and unknown cells (neither ACT nor CCSP-positive) were counted and expressed relative to the area of the epithelial cell wall of the bronchi.

The number of PCNA-immunopositive cells was counted by observing 10 randomly selected bronchi or bronchioles in lung sections from three WT and three heterozygous mice.

Histological score

Lung sections from three control WT mice, seven 14–22-week-old Muc5b^{ko/+} mice with respiratory distress and five 10–16-week-old Muc5b^{ko/+} mice without respiratory distress were scored blindly for inflammation and fibrosis from 0 to 11 (adapted from Madtes et al., 1999) and metaplasia and hyperplasia of the bronchi. Lung inflammation, metaplasia and hyperplasia of the bronchi was scored on H&E-stained lung sections on a scale of 0 to 3 for inflammation (0, no inflammatory involvement; 1, inflammatory cell infiltration of 3–29% of the parenchyma; 2, inflammatory cell infiltration of 30–59% of the parenchyma; and 3, inflammatory cell infiltration of 60–100% of the parenchyma), on a scale of 0 to 2 for metaplasia (0, no metaplasia; 1, slight metaplasia of epithelial cells of the bronchus; 2, strong metaplasia) and on a scale of 0 to 2 for hyperplasia (0, no hyperplasia; 1, slight hyperplasia of epithelial cells of the bronchus; 2, strong hyperplasia). Lung fibrosis was scored on Trichrome-stained lung sections on a scale of 0 to 4 (0, no increase in connective tissue; 1, fine connective-tissue fibrils in less than 50% of the area occupied by inflammatory cells, without coarse collagen; 2, fine fibrils in 50–100% of the same area, without coarse collagen; 3, fine fibrils in 100% of the area, with coarse collagen bundles in 10–49% of the area; 4, fine fibrils in 100% of the area, with coarse collagen in 50–100% of the area). Scores were established on three lobes (left lobe and right cranial and middle lobes) of the lung. Three different sections of the lung (upper, middle and lower parts) were analyzed.

Lung mechanics

Lung mechanics were assessed in Muc5b^{ko/+} mice and Muc5b^{+/+} sibling mice using Flexivent (Scireq, Montreal, Canada) as follows. Six-week-old mice were anesthetized by intraperitoneal injection of medetomidine (5 ml/kg; Pfizer, Paris, France) and 10% ketamine (Merial, Lyon, France), paralyzed by intraperitoneal injection of 1% pancuronium bromide (5 ml/kg; Organon) and immediately intubated with an 18-gauge catheter, followed by mechanical ventilation. Respiratory frequency was set at 150 breaths/min with a tidal volume of 0.2 ml and a positive-end expiratory pressure of 2 ml H₂O was applied. Mice were exposed to nebulized PBS followed by increasing concentrations of nebulized metacholine (3–50 mg/ml in PBS; Sigma-Aldrich) using an ultrasonic nebulizer (Aeroneb, Aerogen, Galway, Ireland). For each dose, 10 cycles of nebulization and measurements were performed. Nebulization was conducted during the first cycle and consisted of 20 puffs per 10 s, with each puff of aerosol delivery lasting 10 ms. For each cycle, measurements were obtained for 15 s followed by ventilation for 5 s. The maximum dynamic resistance (R_L), Newtonian resistance (R_n), elastance (E), tissue damping (G) and tissue elastance (E) were recorded before and after increasing doses of aerosolized metacholine.

Measurement of chemokine KC in BAL

BAL was performed prior to sacrifice by two consecutive injections (500 μ l and 1 ml) of PBS through a tracheal cannula. Lavage fluid was centrifuged at 1000 \times g for 10 min and the supernatant was stored at –80°C until use. Chemokine KC was measured using an ELISA kit (R&D systems, DY453) according to the manufacturer's instructions. Absorbance at 450 nm was determined using a microplate reader. 50 μ l of the BAL supernatant was used to evaluate the KC level of adult mice. To measure the KC level in lungs at post-natal day 2, newborn mice were sacrificed, lungs were removed and homogenized in PBS. The homogenate was then centrifuged at 1000 \times g for 10 min and 50 μ l of the supernatant was used to quantify the KC level. Lungs used for BAL were not used for other investigations.

Statistical analysis

For histological score, ASMA quantification, KC level quantification in PCNA-positive cells, cell number quantification (ACT-, CCSP-positive cells and total epithelial cells of bronchi), the graphs show the median value. The Wilcoxon–Mann–Whitney and Pearson's Chi² tests were performed using StatXact 6.0 (Cytel Studio, Cambridge, USA) to compare unpaired data. For the lung mechanics, all results are expressed as mean \pm s.e.m. Two-way analysis of variance was performed using GraphPad Prism software (La Jolla, USA) and was used to analyze lung parameters. A P -value of ≤ 0.05 was considered statistically significant.

Acknowledgements

We thank M. Holzenberger (Inserm UMRS 938, Paris, France) for the MeuC^{re}40 mouse strain, M. Tauc (CNRS FRE 3093, Nice, France) for the CCSP-Cre mouse strain, C. Goujet-Zalc (CNRS, SEAT UPS44, Villejuif, France) for the generation of Tg mice, J. S. Ryerse (Dept. of Pathology, St Louis University, MO, USA) for the anti-CCSP antibody, M. H. Gevaert and R. M. Siminski (Service Commun-Morphologie Cellulaire, University of Lille, France) for slides, J. Devassine and R. Dehaynin from the EOPS animal facility (University of Lille, France) for mouse colony management and P. Roussel for critical reading of the manuscript and useful discussions.

Competing interests

The authors declare no competing or financial interests.

Author contributions

Conceptualization: H.V., V.G., J.-L.D.; Methodology: H.V., V.G., C.D.; Validation: V.G., C.D., C.L., B.R., A.J.; Formal analysis: H.V., V.G., C.D., C.L., M.L.B., B.R., A.J., F.G., J.-L.D.; Investigation: H.V., V.G., C.D., P.M., M.L.B., S.P.; Resources: C.D.; Data curation: H.V., V.G.; Writing - original draft: H.V., V.G., C.L., B.R., A.J., J.-L.D.; Writing - review & editing: H.V., V.G., F.G., J.-L.D.; Visualization: V.G., J.-L.D.; Supervision: J.-L.D.; Project administration: J.-L.D.; Funding acquisition: J.-L.D.

Funding

This study (J.-L.D.) was supported in part by the French Cystic Fibrosis Association – Vaincre la Mucoviscidose and by the SFR Maladies Infectieuses,

Inflammatoires Immunitaires – FED 4258. H.V. was the recipient of a fellowship from the University of Lille/Ministry of Higher Education and Research.

Supplementary information

Supplementary information available online at <http://bio.biologists.org/lookup/doi/10.1242/bio.046359.supplemental>

References

- Bertin, G., Poujeol, C., Rubera, I., Poujeol, P. and Tauc, M. (2005). In vivo Cre/loxP mediated recombination in mouse Clara cells. *Transgenic Res.* **14**, 645–654. doi:10.1007/s11248-005-7214-0
- Boase, N. A., Rychkov, G. Y., Townley, S. L., Dinudom, A., Candi, E., Voss, A. K., Tsoutsman, T., Semsarian, C., Melino, G., Koentgen, F. et al. (2011). Respiratory distress and perinatal lethality in Nedd4-2-deficient mice. *Nat. Commun.* **2**, 287. doi:10.1038/ncomms1284
- Boucherat, O., Chakir, J. and Jeannotte, L. (2012). The loss of Hoxa5 function promotes Notch-dependent goblet cell metaplasia in lung airways. *Biol. Open* **1**, 677–691. doi:10.1242/bio.20121701
- Buisine, M.-P., Desseyn, J.-L., Porchet, N., Degand, P., Laine, A. and Aubert, J.-P. (1998). Genomic organization of the 3'-region of the human MUC5AC mucin gene: additional evidence for a common ancestral gene for the 11p15.5 mucin gene family. *Biochem. J.* **332**, 729–738. doi:10.1042/bj3320729
- Buisine, M.-P., Devisme, L., Copin, M.-C., Durand-Réville, M., Gosselin, B., Aubert, J.-P. and Porchet, N. (1999). Developmental mucin gene expression in the human respiratory tract. *Am. J. Respir. Cell Mol. Biol.* **20**, 209–218. doi:10.1165/ajrcmb.20.2.3259
- Buisine, M.-P., Devisme, L., Degand, P., Dieu, M.-C., Gosselin, B., Copin, M.-C., Aubert, J.-P. and Porchet, N. (2000). Developmental mucin gene expression in the gastroduodenal tract and accessory digestive glands. II. Duodenum and liver, gallbladder, and pancreas. *J. Histochem. Cytochem.* **48**, 1667–1676. doi:10.1177/002215540004801210
- Camelo, A., Dunmore, R., Sleeman, M. A. and Clarke, D. L. (2014). The epithelium in idiopathic pulmonary fibrosis: breaking the barrier. *Front. Pharmacol.* **4**, 173. doi:10.3389/fphar.2013.00173
- Chen, Y., Zhao, Y. H. and Wu, R. (2001). In silico cloning of mouse Muc5b gene and upregulation of its expression in mouse asthma model. *Am. J. Respir. Crit. Care Med.* **164**, 1059–1066. doi:10.1164/ajrcm.164.6.2012114
- DeMayo, F. J. (1999). Advantages and pitfalls of transgenic and mutant animals. *Am. J. Kidney Dis.* **33**, 598–600. doi:10.1016/S0272-6386(99)70200-3
- Desseyn, J.-L. (2009). Mucin CYS domains are ancient and highly conserved modules that evolved in concert. *Mol. Phylogenet. Evol.* **52**, 284–292. doi:10.1016/j.ympev.2009.03.035
- Desseyn, J.-L. and Laine, A. (2003). Characterization of mouse muc6 and evidence of conservation of the gel-forming mucin gene cluster between human and mouse. *Genomics* **81**, 433–436. doi:10.1016/S0888-7543(03)00036-3
- Desseyn, J.-L., Guyonnet-Dupérat, V., Porchet, N., Aubert, J.-P. and Laine, A. (1997a). Human mucin gene MUC5B, the 10.7-kb large central exon encodes various alternate subdomains resulting in a super-repeat. *J. Biol. Chem.* **272**, 3168–3178. doi:10.1074/jbc.272.6.3168
- Desseyn, J.-L., Aubert, J.-P., Van Seuning, I., Porchet, N. and Laine, A. (1997b). Genomic organization of the 3' region of the human mucin gene MUC5B. *J. Biol. Chem.* **272**, 16873–16883. doi:10.1074/jbc.272.27.16873
- Desseyn, J.-L., Buisine, M.-P., Porchet, N., Aubert, J.-P. and Laine, A. (1998). Genomic organization of the human mucin gene MUC5B. cDNA and genomic sequences upstream of the large central exon. *J. Biol. Chem.* **273**, 30157–30164. doi:10.1074/jbc.273.46.30157
- Desseyn, J.-L., Aubert, J.-P., Porchet, N. and Laine, A. (2000). Evolution of the large secreted gel-forming mucins. *Mol. Biol. Evol.* **17**, 1175–1184. doi:10.1093/oxfordjournals.molbev.a026400
- Durrani, S. R., Viswanathan, R. K. and Busse, W. W. (2011). What effect does asthma treatment have on airway remodeling? Current perspectives. *J. Allergy Clin. Immunol.* **128**, 439–448. doi:10.1016/j.jaci.2011.06.002
- Fahy, J. V. and Dickey, B. F. (2010). Airway mucus function and dysfunction. *N. Engl. J. Med.* **363**, 2233–2247. doi:10.1056/NEJMr0910061
- Fingerlin, T. E., Murphy, E., Zhang, W., Peljto, A. L., Brown, K. K., Steele, M. P., Loyd, J. E., Cosgrove, G. P., Lynch, D., Groshong, S. et al. (2013). Genome-wide association study identifies multiple susceptibility loci for pulmonary fibrosis. *Nat. Genet.* **45**, 613–620. doi:10.1038/ng.2609
- Gouyer, V., Leir, S.-H., Tetaert, D., Liu, Y., Gottrand, F., Harris, A. and Desseyn, J.-L. (2010). The characterization of the first anti-mouse Muc6 antibody shows an increased expression of the mucin in pancreatic tissue of Cfr-knockout mice. *Histochem. Cell Biol.* **133**, 517–525. doi:10.1007/s00418-010-0688-8
- Gustafson, T., Dahlman-Högglund, A., Nilsson, K., Ström, K., Tornling, G. and Torén, K. (2007). Occupational exposure and severe pulmonary fibrosis. *Respir. Med.* **101**, 2207–2212. doi:10.1016/j.rmed.2007.02.027
- Howe, D. G., Clarke, C. M., Yan, H., Willis, B. S., Schneider, D. A., McKnight, G. S. and Kapur, R. P. (2006). Inhibition of protein kinase A in murine enteric neurons causes lethal intestinal pseudo-obstruction. *J. Neurobiol.* **66**, 256–272. doi:10.1002/neu.20217
- Jeffery, P. K. (1998). Structural and inflammatory changes in COPD: a comparison with asthma. *Thorax* **53**, 129–136. doi:10.1136/thx.53.2.129
- Jin, W., Rong, L., Liu, Y., Song, Y., Li, Y. and Pan, J. (2013). Increased claudin-3, -4 and -18 levels in bronchoalveolar lavage fluid reflect severity of acute lung injury. *Respirology* **18**, 643–651. doi:10.1111/resp.12034
- Kamio, K., Matsushita, I., Hijikata, M., Kobashi, Y., Tanaka, G., Nakata, K., Ishida, T., Tokunaga, K., Taguchi, Y., Homma, S. et al. (2005). Promoter analysis and aberrant expression of the MUC5B gene in diffuse panbronchiolitis. *Am. J. Respir. Crit. Care Med.* **171**, 949–957. doi:10.1164/rccm.200409-1168OC
- Kesimer, M., Ehre, C., Burns, K. A., Davis, C. W., Sheehan, J. K. and Pickles, R. J. (2013). Molecular organization of the mucins and glycocalyx underlying mucus transport over mucosal surfaces of the airways. *Mucosal Immunol.* **6**, 379–392. doi:10.1038/mi.2012.81
- Leneuve, P., Colnot, S., Hamard, G., Francis, F., Niwa-Kawakita, M., Giovannini, M. and Holzenberger, M. (2003). Cre-mediated germline mosaicism: a new transgenic mouse for the selective removal of residual markers from tri-loc conditional alleles. *Nucleic Acids Res.* **31**, e21. doi:10.1093/nar/gng021
- Li, Y., Jiang, D., Liang, J., Meltzer, E. B., Gray, A., Miura, R., Wogensen, L., Yamaguchi, Y. and Noble, P. W. (2011). Severe lung fibrosis requires an invasive fibroblast phenotype regulated by hyaluronan and CD44. *J. Exp. Med.* **208**, 1459–1471. doi:10.1084/jem.20102510
- Livraghi-Butrico, A., Grubb, B. R., Wilkin, K. J., Volmer, A. S., Burns, K. A., Evans, C. M., O'Neal, W. K. and Boucher, R. C. (2017). Contribution of mucus concentration and secreted mucins Muc5ac and Muc5b to the pathogenesis of muco-obstructive lung disease. *Mucosal Immunol.* **10**, 395–407. doi:10.1038/mi.2016.63
- López, I. P., Piñeiro-Hermida, S., Pais, R. S., Torrens, R., Hoeflich, A. and Pichel, J. G. (2016). Involvement of Igf1r in bronchiolar epithelial regeneration: role during repair kinetics after selective club cell ablation. *PLoS ONE* **11**, e0166388. doi:10.1371/journal.pone.0166388
- Madtes, D. K., Elston, A. L., Hackman, R. C., Dunn, A. R. and Clark, J. G. (1999). Transforming growth factor-alpha deficiency reduces pulmonary fibrosis in transgenic mice. *Am. J. Respir. Cell Mol. Biol.* **20**, 924–934. doi:10.1165/ajrcmb.20.5.3526
- Mähler, C. M., Berard, M., Feinstein, R., Gallagher, A., Illgen-Wilcke, B., Pritchett-Corning, K. and Raspa, M. (2014). FELSA recommendations for the health monitoring of mouse, rat, hamster, guinea pig and rabbit colonies in breeding and experimental units. *Lab. Anim.* **48**, 178–192. doi:10.1177/0023677213516312
- Noth, I., Zhang, Y., Ma, S.-F., Flores, C., Barber, M., Huang, Y., Broderick, S. M., Wade, M. S., Hysi, P., Scurba, J. et al. (2013). Genetic variants associated with idiopathic pulmonary fibrosis susceptibility and mortality: a genome-wide association study. *Lancet Respir. Med.* **1**, 309–317. doi:10.1016/S2213-2600(13)70045-6
- Phan, S. H. (2002). The myofibroblast in pulmonary fibrosis. *Chest* **122**, 286S–289S. doi:10.1378/chest.122.6_suppl.286S
- Portal, C., Gouyer, V., Magnien, M., Plet, S., Gottrand, F. and Desseyn, J.-L. (2017a). In vivo imaging of the Muc5b gel-forming mucin. *Sci. Rep.* **7**, 44591. doi:10.1038/srep44591
- Portal, C., Gouyer, V., Gottrand, F. and Desseyn, J.-L. (2017b). Preclinical mouse model to monitor live Muc5b-producing conjunctival goblet cell density under pharmacological treatments. *PLoS ONE* **12**, e0174764. doi:10.1371/journal.pone.0174764
- Reynolds, S. D., Mango, G. W., Gelein, R., Bøe, I.-M., Lund, J. and Stripp, B. R. (1999). Normal function and lack of fibronectin accumulation in kidneys of Clara cell secretory protein/uteroglobin deficient mice. *Am. J. Kidney Dis.* **33**, 541–551. doi:10.1016/S0272-6386(99)70192-7
- Reynolds, S. D., Reynolds, P. R., Pryhuber, G. S., Finder, J. D. and Stripp, B. R. (2002). Secretoglobins SCGB3A1 and SCGB3A2 define secretory cell subsets in mouse and human airways. *Am. J. Respir. Crit. Care Med.* **166**, 1498–1509. doi:10.1164/rccm.200204-285OC
- Rocco, P. R., Dos, S. C. and Pelosi, P. (2009). Lung parenchyma remodeling in acute respiratory distress syndrome. *Minerva Anesthesiol.* **75**, 730–740.
- Rose, M. C. and Voynow, J. A. (2006). Respiratory tract mucin genes and mucin glycoproteins in health and disease. *Physiol. Rev.* **86**, 245–278. doi:10.1152/physrev.00010.2005
- Roy, M. G., Livraghi-Butrico, A., Fletcher, A. A., McElwee, M. M., Evans, S. E., Boerner, R. M., Alexander, S. N., Bellinghausen, L. K., Song, A. S., Petrova, Y. M. et al. (2014). Muc5b is required for airway defence. *Nature* **505**, 412–416. doi:10.1038/nature12807
- Ryser, J. S., Hoffmann, J. W., Mahmoud, S., Nagel, B. A. and DeMello, D. E. (2001). Immunolocalization of CC10 in Clara cells in mouse and human lung. *Histochem. Cell Biol.* **115**, 325–332.
- Scotton, C. J. and Chambers, R. C. (2007). Molecular targets in pulmonary fibrosis: the myofibroblast in focus. *Chest* **132**, 1311–1321. doi:10.1378/chest.06-2668
- Seibold, M. A., Wise, A. L., Speer, M. C., Steele, M. P., Brown, K. K., Loyd, J. E., Fingerlin, T. E., Zhang, W., Gudmundsson, G., Groshong, S. D. et al. (2011). A common MUC5B promoter polymorphism and pulmonary fibrosis. *N. Engl. J. Med.* **364**, 1503–1512. doi:10.1056/NEJMoa1013660
- Selman, M. and Pardo, A. (2002). Idiopathic pulmonary fibrosis: an epithelial/fibroblastic cross-talk disorder. *Respir. Res.* **3**, 3. doi:10.1186/rr175

- Stock, C. J., Sato, H., Fonseca, C., Banya, W. A. S., Molyneaux, P. L., Adamali, H., Russell, A.-M., Denton, C. P., Abraham, D. J., Hansell, D. M. et al.** (2013). Mucin 5B promoter polymorphism is associated with idiopathic pulmonary fibrosis but not with development of lung fibrosis in systemic sclerosis or sarcoidosis. *Thorax* **68**, 436-441. doi:10.1136/thoraxjnl-2012-201786
- Thornton, D. J., Rousseau, K. and McGuckin, M. A.** (2008). Structure and function of the polymeric mucins in airways mucus. *Annu. Rev. Physiol.* **70**, 459-486. doi:10.1146/annurev.physiol.70.113006.100702
- Tompkins, D. H., Besnard, V., Lange, A. W., Wert, S. E., Keiser, A. R., Smith, A. N., Lang, R. and Whitsett, J. A.** (2009). Sox2 is required for maintenance and differentiation of bronchiolar Clara, ciliated, and goblet cells. *PLoS ONE* **4**, e8248. doi:10.1371/journal.pone.0008248
- Valque, H., Gouyer, V., Husson, M.-O., Gottrand, F. and Desseyn, J.-L.** (2011). Abnormal expression of Muc5b in Cfr-null mice and in mammary tumors of MMTV-ras mice. *Histochem. Cell Biol.* **136**, 699-708. doi:10.1007/s00418-011-0872-5
- Valque, H., Gouyer, V., Gottrand, F. and Desseyn, J.-L.** (2012). MUC5B leads to aggressive behavior of breast cancer MCF7 Cells. *PLoS ONE* **7**, e46699. doi:10.1371/journal.pone.0046699
- Wuyts, W. A., Agostini, C., Antoniou, K. M., Bouros, D., Chambers, R. C., Cottin, V., Egan, J. J., Lambrecht, B. N., Lories, R., Parfrey, H. et al.** (2013). The pathogenesis of pulmonary fibrosis: a moving target. *Eur. Respir. J.* **41**, 1207-1218. doi:10.1183/09031936.00073012
- Wynn, T. A.** (2011). Integrating mechanisms of pulmonary fibrosis. *J. Exp. Med.* **208**, 1339-1350. doi:10.1084/jem.20110551
- Zhang, Z., Kundu, G. C., Yuan, C. J., Ward, J. M., Lee, E. J., Demayo, F. J., Westphal, H. and Mukherjee, A. B.** (1997). Severe fibronectin-deposit renal glomerular disease in mice lacking uteroglobin. *Science* **276**, 1408-1412. doi:10.1126/science.276.5317.1408
- Zhang, Y., Noth, I., Garcia, J. G. N. and Kaminski, N.** (2011). A variant in the promoter of MUC5B and idiopathic pulmonary fibrosis. *N. Engl. J. Med.* **364**, 1576-1577. doi:10.1056/NEJMc1013504

Suppl. Figures

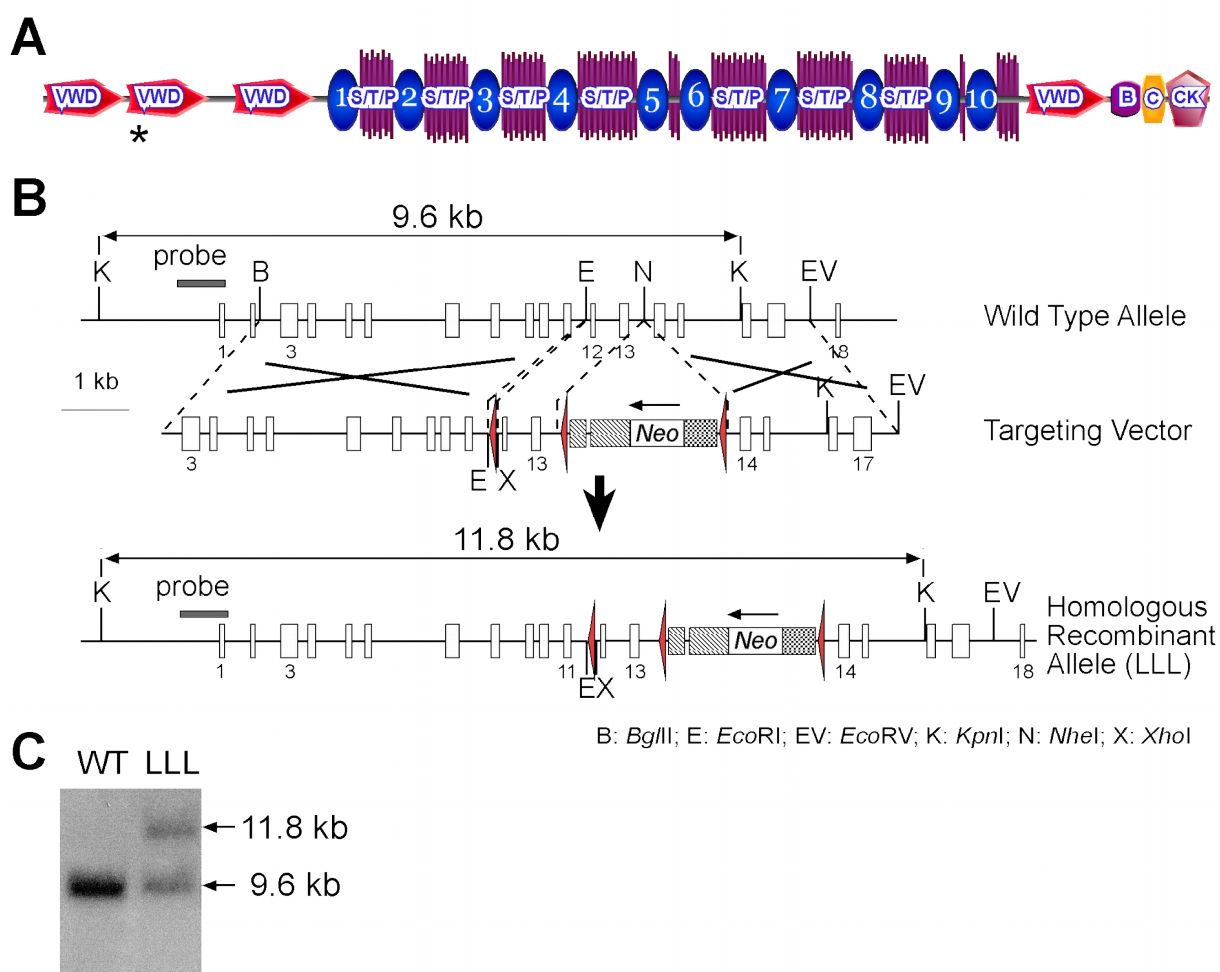


Figure S1. Targeted disruption of the *Muc5b* gene. (A) Schematic domain structure of mouse *Muc5b* protein. Mouse *Muc5b* protein is composed of amino- and carboxy-terminal regions that share similar domains with von-Willebrand factor (vW-B, -C, -CK and -D). The central part of *Muc5b* contains large regions enriched in Ser, Thr and Pro (S/T/P), which are extensively substituted with *O*-glycans. A highly conserved domain (oval blue) named CYS-domain is found 10 times in *Muc5b* and is linked to or interrupts the Ser/Thr/Pro regions. The asterisk indicates the targeted region used to invalidate *Muc5b*. (B) Structure and partial restriction enzyme map of the genomic segment of *Muc5b* used to generate the targeting vector. Empty boxes indicate exons and some of them are numbered. In the targeting vector, exons 12 and 13 are flanked by loxP sites and a NEO cassette flanked by a third loxP site was inserted into intron 13, in the opposite transcriptional orientation to that of *Muc5b*, as indicated by the arrow. (C) Southern blot analysis of DNA isolated from a control ES clone (wild-type, WT) and the positive embryonic stem cell clone (LLL). DNA was digested with *Kpn*I and hybridized with the 5' probe (indicated by a gray box in (B)). The 9.6 and 11.8 kb bands correspond to the WT and mutant allele (LLL allele), respectively.

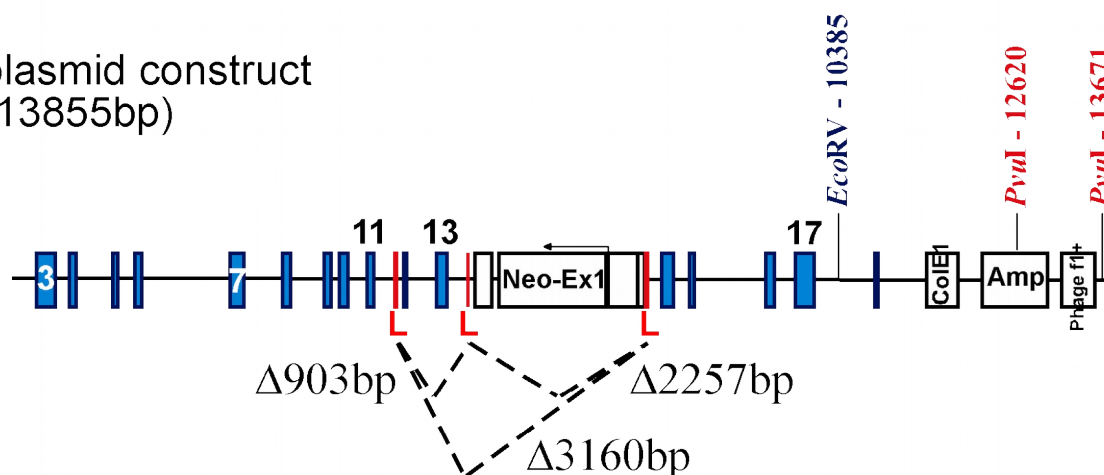
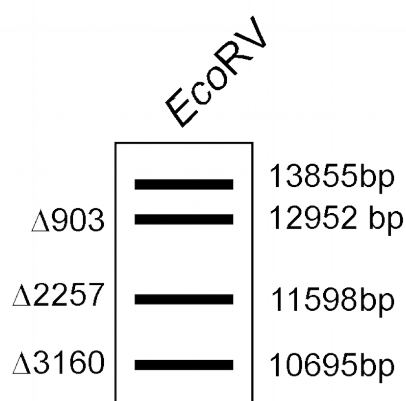
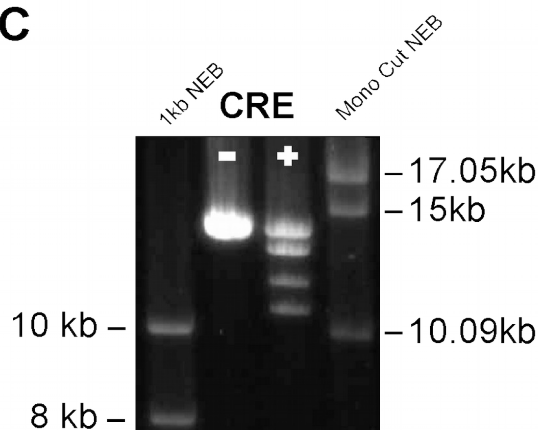
Aplasmid construct
(13855bp)**B****C**

Figure S2. The three loxP sites are in the same orientation. (A) Schematic representation of the targeting vector. The three deletion (Δ) events are represented. (B) Predicted profile of *EcoRV*-linearised plasmid on agarose gel after Cre recombination if the three loxP sites have the same orientation. (C) Following incubation (+) of the circular plasmid construct with Cre recombinase (New England Biolabs) for 3 h, the DNA was digested with *EcoRV* and analyzed on a 0.6% agarose gel in comparison with the plasmid construct without Cre recombinase (-). Plasmid DNA with Cre (+) showed one band corresponding to the unrecombined DNA (13.9 kb) and three lower bands that correspond to the three possible recombination events depicted in (A). The two DNA ladders are the 1 kb-ladder and the monocut-ladder from New England Biolabs.

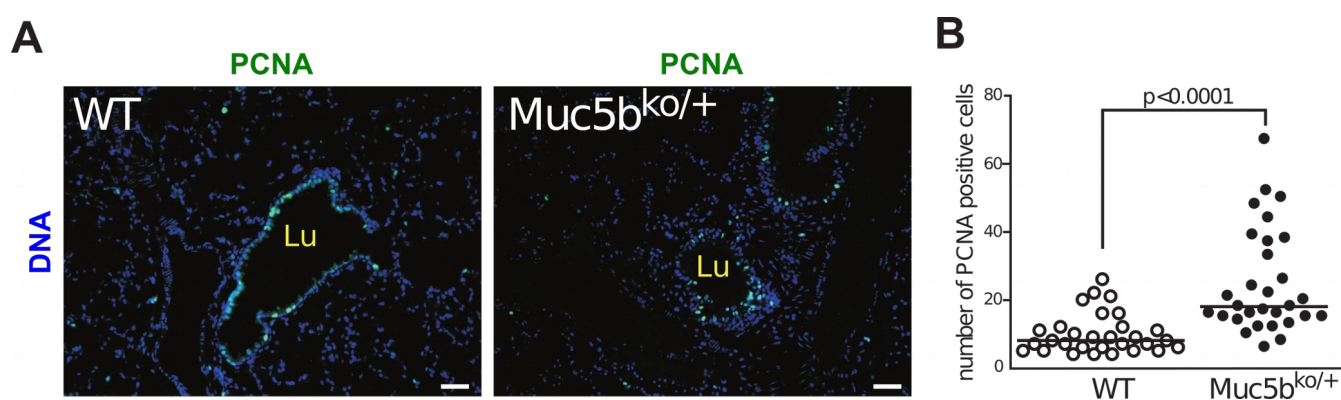


Figure S3. Increase cell proliferation in Muc5b^{ko/+} mice with respiratory distress. (A) Representative immunofluorescence pictures of paraffin-embedded lung section of a wild-type (WT) and a Muc5b^{ko/+} mouse stained with anti-proliferative cell nuclear antigen (PCNA) antibody. Lu = lumen; Scale bars = 50 μ m. **(B)** The number of PCNA-positive cells was evaluated in the lungs of three WT (white circles; 10 bronchi per mouse) and three Muc5b^{ko/+} (black circles; 10 bronchi per mouse) mice. Data were analyzed using the Wilcoxon-Mann-Whitney test.

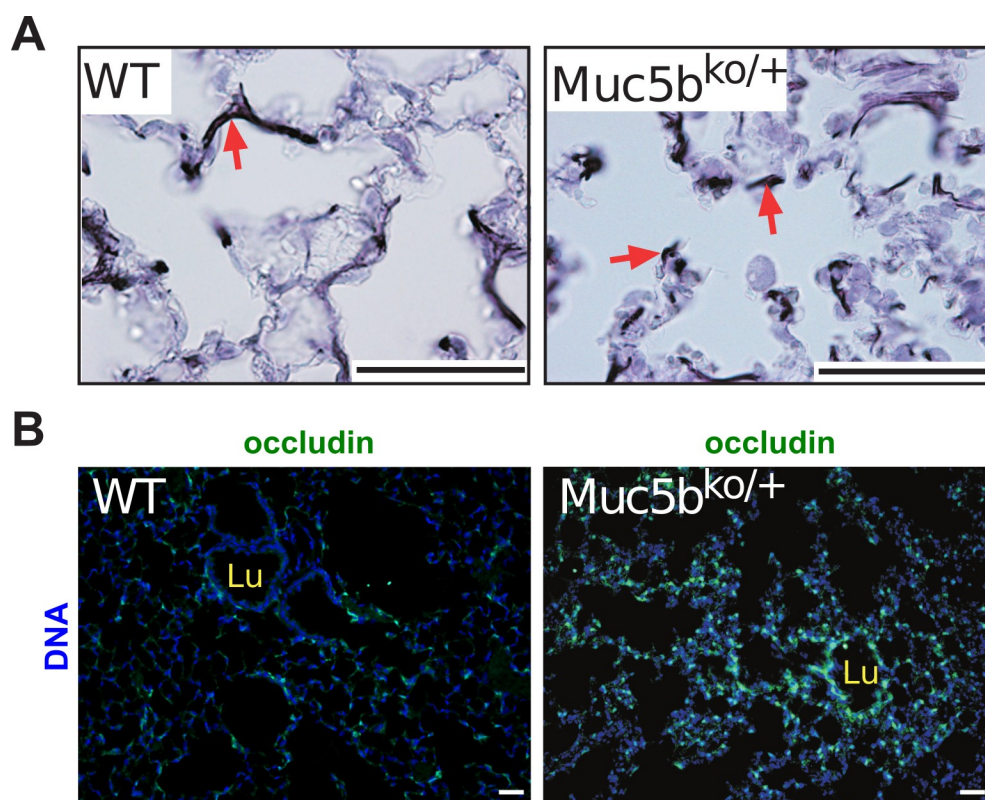


Figure S4. Disorganization of tight junctions of *Muc5b*^{ko/+} mice with respiratory distress. (A) Orcein staining showing disorganization of elastin fibers (red arrows) in *Muc5b*^{ko/+} mice. **(B)** Representative immunofluorescence pictures of paraffin-embedded lung sections stained with anti-occludin antibody. Lu = lumen; Scale bars = 50 μ m.

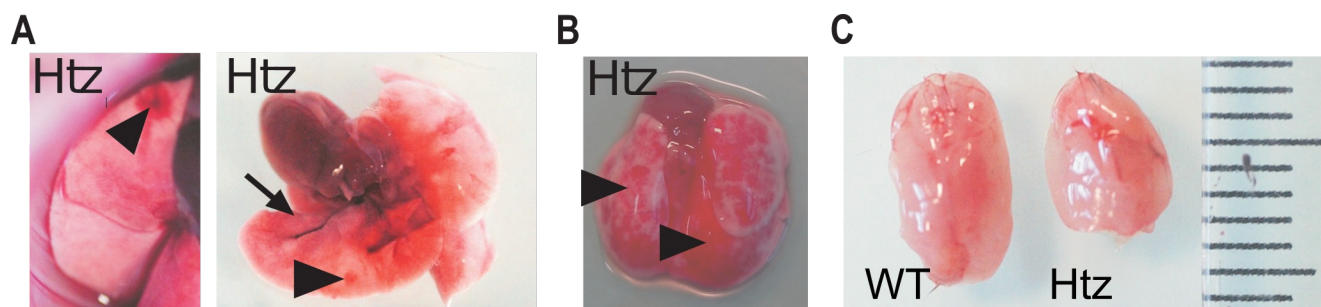


Figure S5. Heterozygous mice displayed abnormal lung morphology and atrophy of the salivary glands. (A) Macroscopic examination of a lungs from a $Muc5b^{ko/+}$ (Htz) mouse without respiratory distress. Arrowheads indicate areas of hemorrhage. (B) The hemorrhagic area is larger for a mouse with respiratory distress. (C) Macroscopic examination of salivary glands from wild-type (WT) and Htz mice. Htz mice exhibited atrophy of one salivary gland.

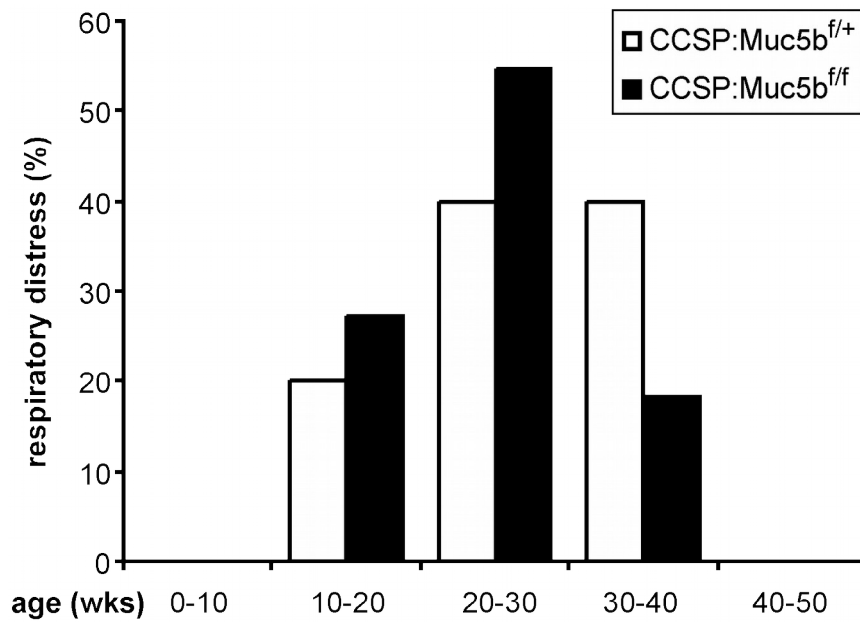


Figure S6. Frequency (%) of CCSPCre-positive mice with respiratory distress and carrying either one or two Muc5b-floxed allele.

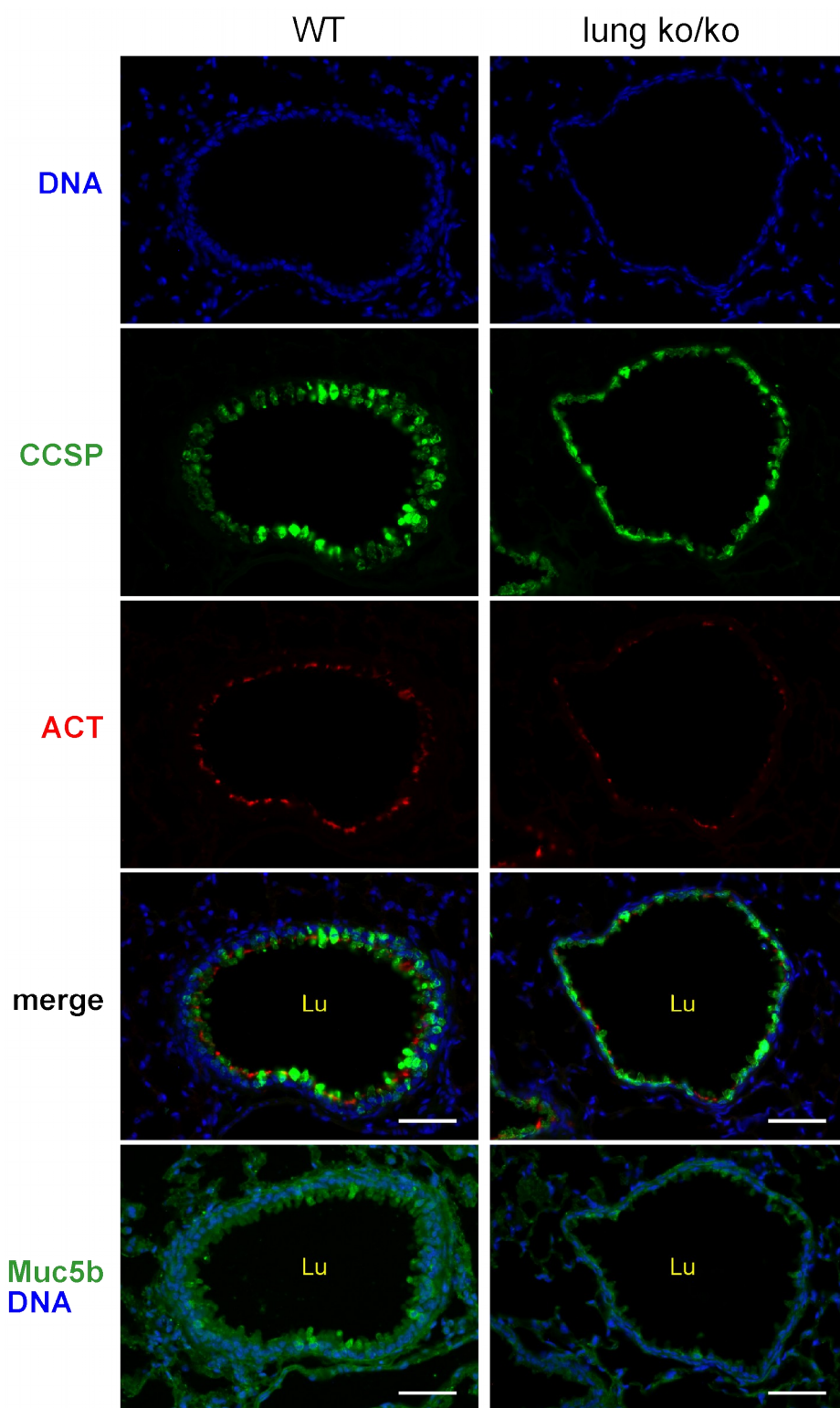
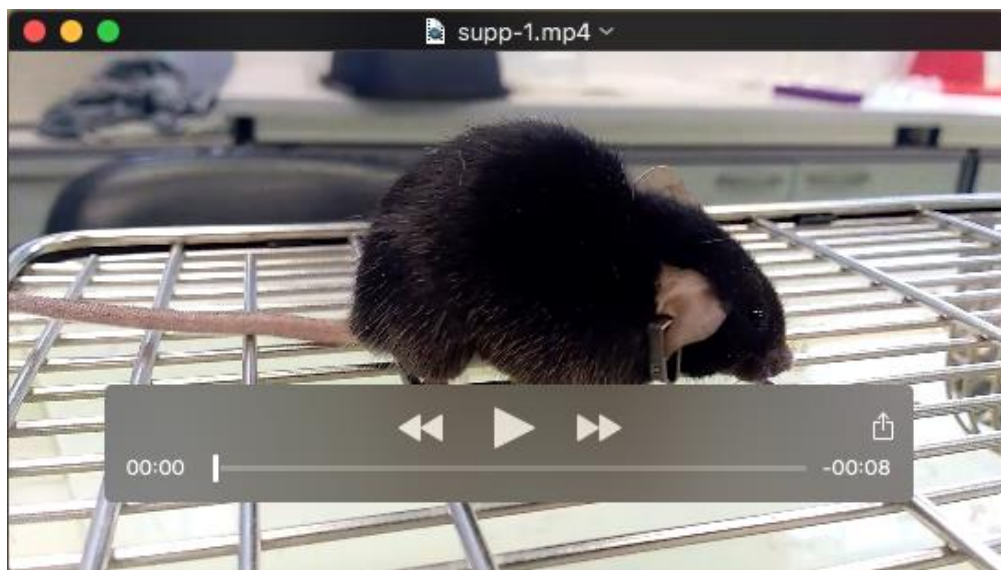


Figure S7. Immunohistochemical analysis of Club cells and ciliated cells. Serial bronchial sections of wild-type (WT) and *Muc5b*^{lung ko} mice were analyzed by immunohistochemical analysis for the detection of CCSP-, ACT- and Muc5b-positive cells. Lu = lumen; Scale bars = 50 μ m.



Movie 1. Adult $Muc5b^{ko/+}$ mouse with respiratory distress showing hunched posture, reduced locomotor activity and polypnoea.



Movie 2. Adult $Muc5b^{ko/+}$ mouse (different from video 1) with respiratory distress showing hunched posture, squeaking and discreet cough.