



The 2018 diagnosis of ipf guidelines: surgical lung biopsy in probable uip is not mandatory

Ganesh Raghu, Martine Remy, Jeffrey L. Myers, Luca Richeldi, Kevin C. Wilson

► To cite this version:

Ganesh Raghu, Martine Remy, Jeffrey L. Myers, Luca Richeldi, Kevin C. Wilson. The 2018 diagnosis of ipf guidelines: surgical lung biopsy in probable uip is not mandatory. American Journal of Respiratory and Critical Care Medicine, 2019, American journal of respiratory and critical care medicine, 200 (9), pp.1089-1092. 10.1164/rccm.201907-1324ED . hal-02513609

HAL Id: hal-02513609

<https://hal.univ-lille.fr/hal-02513609>

Submitted on 20 Mar 2020

HAL is a multi-disciplinary open access archive for the deposit and dissemination of scientific research documents, whether they are published or not. The documents may come from teaching and research institutions in France or abroad, or from public or private research centers.

L'archive ouverte pluridisciplinaire **HAL**, est destinée au dépôt et à la diffusion de documents scientifiques de niveau recherche, publiés ou non, émanant des établissements d'enseignement et de recherche français ou étrangers, des laboratoires publics ou privés.



Distributed under a Creative Commons Attribution - NonCommercial - ShareAlike 4.0 International License

References

- Whitsett JA, Kalin TV, Xu Y, Kalinichenko VV. Building and regenerating the lung cell by cell. *Physiol Rev* 2019;99:513–554.
- Morrissey EE, Hogan BL. Preparing for the first breath: genetic and cellular mechanisms in lung development. *Dev Cell* 2010;18:8–23.
- Vincent M, Karolak JA, Deutsch G, Gambin T, Popek E, Isidor B, *et al.* Clinical, histopathological, and molecular diagnostics in lethal lung developmental disorders. *Am J Respir Crit Care Med* [online ahead of print] 12 Jun 2019; DOI: 10.1164/rccm.201903-0495TR.
- Deutsch GH, Young LR, Deterding RR, Fan LL, Dell SD, Bean JA, *et al.*; Pathology Cooperative Group; ChILD Research Co-operative. Diffuse lung disease in young children: application of a novel classification scheme. *Am J Respir Crit Care Med* 2007;176:1120–1128.
- Bishop NB, Stankiewicz P, Steinhorn RH. Alveolar capillary dysplasia. *Am J Respir Crit Care Med* 2011;184:172–179.
- Langston C, Dishop MK. Diffuse lung disease in infancy: a proposed classification applied to 259 diagnostic biopsies. *Pediatr Dev Pathol* 2009;12:421–437.
- Szafranski P, Coban-Akdemir ZH, Rupps R, Grazioli S, Wensley D, Jhangiani SN, *et al.* Phenotypic expansion of TBX4 mutations to include acinar dysplasia of the lungs. *Am J Med Genet A* 2016;170:2440–2444.
- Stankiewicz P, Sen P, Bhatt SS, Storer M, Xia Z, Bejjani BA, *et al.* Genomic and genic deletions of the FOX gene cluster on 16q24.1 and inactivating mutations of FOXF1 cause alveolar capillary dysplasia and other malformations. *Am J Hum Genet* 2009;84:780–791. [Published erratum appears in *Am J Hum Genet* 85:537.]
- Galambos C, Mullen MP, Shieh JT, Schwert N, Kiehl MJ, Ullmann N, *et al.* Phenotypic characterisation of TBX4 mutation and deletion carriers with neonatal and paediatric pulmonary hypertension. *Eur Respir J* 2019;54:1801965.
- Zhu N, Gonzaga-Jauregui C, Welch CL, Ma L, Qi H, King AK, *et al.* Exome sequencing in children with pulmonary arterial hypertension demonstrates differences compared with adults. *Circ Genom Precis Med* 2018;11:e001887.
- Ren X, Ustiyani V, Guo M, Wang G, Bolte C, Zhang Y, *et al.* Postnatal alveologenesis depends on FOXF1 signaling in c-KIT⁺ endothelial progenitor cells. *Am J Respir Crit Care Med* 2019;200:1164–1176.
- Ren X, Ustiyani V, Pradhan A, Cai Y, Havrilak JA, Bolte CS, *et al.* FOXF1 transcription factor is required for formation of embryonic vasculature by regulating VEGF signaling in endothelial cells. *Circ Res* 2014;115:709–720.
- Bolte C, Flood HM, Ren X, Jagannathan S, Barski A, Kalin TV, *et al.* FOXF1 transcription factor promotes lung regeneration after partial pneumonectomy. *Sci Rep* 2017;7:10690.
- Jakkula M, Le Cras TD, Gebb S, Hirth KP, Tudor RM, Voelkel NF, *et al.* Inhibition of angiogenesis decreases alveolarization in the developing rat lung. *Am J Physiol Lung Cell Mol Physiol* 2000;279:L600–L607.
- Abman SH. Impaired vascular endothelial growth factor signaling in the pathogenesis of neonatal pulmonary vascular disease. *Adv Exp Med Biol* 2010;661:323–335.
- Bhatt AJ, Pryhuber GS, Huyck H, Watkins RH, Metlay LA, Maniscalco WM. Disrupted pulmonary vasculature and decreased vascular endothelial growth factor, Flt-1, and Tie-2 in human infants dying with bronchopulmonary dysplasia. *Am J Respir Crit Care Med* 2001;164:1971–1980.

Copyright © 2019 by the American Thoracic Society



3 The 2018 Diagnosis of Idiopathic Pulmonary Fibrosis Guidelines: Surgical Lung Biopsy for Radiological Pattern of Probable Usual Interstitial Pneumonia Is Not Mandatory

Clinical practice guidelines advise clinicians on the management of patients based on evidence and evolving knowledge. Questions that are important to patients and clinicians are posed by an expert panel, and a full systematic review of the evidence is performed by methodologists who have neither financial nor intellectual conflicts of interest. The synthesized evidence is discussed by content experts whose potential conflicts of interest are managed, and then recommendations are formulated after considering the balance of benefits versus harms and burdens, quality of evidence, patient values and preferences, cost, and feasibility.

In 2018, the American Thoracic Society (ATS), European Respiratory Society (ERS), Japanese Respiratory Society (JRS), and Latin American Thoracic Society (ALAT) published a clinical practice guideline on the diagnosis of idiopathic pulmonary fibrosis (IPF), updating guidelines from 2011 (1, 2). The new guidelines 1) used systematic reviews to inform each recommendation in strict accordance with the Institute of Medicine Standards for Trustworthy Guidelines (3), 2) eliminated the radiological categories of “possible

UIP pattern” and “inconsistent for UIP pattern” and the pathological categories of “possible UIP” and “nonclassifiable fibrosis,” and 3) refined the radiological and pathological patterns of “UIP” and defined “probable UIP” and “indeterminate for UIP.” The overriding goal of the guidelines was to help clinicians diagnose IPF more accurately, thereby facilitating appropriate treatment, as described in the 2015 guidelines for the treatment of IPF (4).

The radiological patterns of usual interstitial pneumonia (UIP) described in the ATS/ERS/JRS/ALAT guidelines are like those described in a statement from the Fleischner Society (5); however, the two documents make seemingly different recommendations about whether to perform surgical lung biopsy (SLB) in patients with the radiological probable UIP pattern by high-resolution computed tomography (HRCT) (6). Specifically, the ATS/ERS/JRS/ALAT guidelines make a conditional recommendation for SLB after multidisciplinary discussions (MDDs), whereas the Fleischner Society statement indicates that a confident diagnosis of IPF can be made without SLB in the right clinical context. This reflects differences in methodology and terminology rather than any substantive difference in principles and recommended practices.

It is apparent that the recommendations in the ATS/ERS/JRS/ALAT guidelines are subject to misinterpretation as a mandate for SLB in patients with probable UIP. Avoiding this misinterpretation is precisely why the ATS/ERS/JRS/ALAT recommendation was assigned a strength

3 This article is open access and distributed under the terms of the Creative Commons Attribution Non-Commercial No Derivatives License 4.0 (<http://creativecommons.org/licenses/by-nc-nd/4.0/>). For commercial usage and reprints, please contact Diane Gern (dgerm@thoracic.org).

Originally Published in Press as DOI: 10.1164/rccm.201907-1324ED on September 9, 2019

Table 1. Strengths of Recommendations

	Strong Recommendation (“We recommend . . .”)	Conditional Recommendation (“We suggest . . .”)
From the GRADE Working Group		
For patients	The overwhelming majority of individuals in this situation would want the recommended course of action, and only a small minority would not.	The majority of individuals in this situation would want the suggested course of action, but a sizeable minority would not.
For clinicians	The overwhelming majority of individuals should receive the recommended course of action. Adherence to this recommendation according to the guideline could be used as a quality criterion or performance indicator. Formal decision aids are not likely to be needed to help individuals make decisions consistent with their values and preferences.	Different choices will be appropriate for different patients and you must help each patient arrive at a management decision consistent with her or his values and preferences. Decision aids may be useful to help individuals make decisions consistent with their values and preferences. Clinicians should expect to spend more time with patients when working toward a decision.
For policy makers	The recommendation can be adapted as policy in most situations, including for use as a performance indicator.	Policy making will require substantial debates and involvement of many stakeholders. Policies are also more likely to vary between regions. Performance indicators would have to focus on the fact that adequate deliberation about the management options has taken place.
From the ATS/ERS/JRS/ALAT Diagnosis of Idiopathic Pulmonary Fibrosis Guidelines panel discussion		
	It is the right course of action for >95% of patients.	It is the right course of action for >50% of patients but may not be right the right course for a sizeable minority.
	“Just do it.”	“Slow down, think about it, discuss it.”
	You would be willing to tell a colleague who did not follow the recommendation that he/she did the wrong thing.	You would not be willing to tell a colleague who did not follow the recommendation that he/she did the wrong thing; it is a matter of “style” or “equipoise.”
	The recommended course of action may be an appropriate performance measure.	The recommended course of action is not appropriate for a performance measure.

Definition of abbreviations: ALAT = Latin American Thoracic Society; ATS = American Thoracic Society; ERS = European Respiratory Society; GRADE = Grading of Recommendations, Assessment, and Evaluation; JRS = Japanese Respiratory Society.

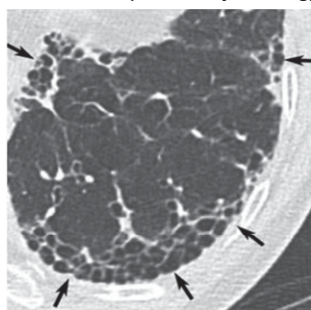
of “conditional” (Table 1), a grading option that was not available to the authors of the Fleischner Society statement. A conditional recommendation conveys that the course of action is appropriate for most patients but may not be appropriate for a sizeable minority of patients. The guideline panel anticipated that among patients who meet HRCT criteria for probable UIP, there will be a spectrum of suspicion for IPF ranging from high to low depending on the clinical context. The conditional strength of the recommendation provides clinicians with equipoise to forgo SLB when the clinical context is strongly suggestive of IPF and to perform SLB when the clinical context is uncertain (Figure 1). This is aligned with the Fleischner Society statement that “surgical lung biopsy remains an important method for the diagnosis of IPF in a large subset of patients who cannot be diagnosed on the basis of clinical and imaging features alone.” In other words, the ATS/ERS/JRS/ALAT guidelines and the Fleischner Society statement recommend the same courses of action—patients with a probable UIP pattern on HRCT and a high clinical likelihood of IPF may forgo SLB, and patients with probable UIP for whom the clinical likelihood of IPF is uncertain may undergo SLB.

The ATS/ERS/JRS/ALAT proposal suggests that MDDs among experts in interstitial lung diseases may play a pivotal role in navigating this key inflection point.

The ATS/ERS/JRS/ALAT guideline panel formulated its recommendations by weighing the diagnostic characteristics of SLB (100% adequate samples, 90% diagnostic yield) versus the risks of SLB (1.7% surgical mortality) in patients with newly detected interstitial lung disease, along with patient preferences, cost, and feasibility. The panel voted 17 to 4 to suggest SLB (i.e., make a conditional recommendation for SLB), while acknowledging the very low quality of the evidence. The panel emphasized the need for an MDD to decide whether to proceed to SLB, as well as the conclusion that SLB should *not* be performed in patients at high risk for intra-, peri-, and/or postoperative complications, such as those with severe hypoxemia at rest and/or severe pulmonary hypertension with $DL_{CO} < 25\%$ after correction for the hematocrit (7). The panel also stated that SLB may be unnecessary in some familial cases.

The suggestion to perform SLB in patients with probable UIP was supported by a prospective study (8). In that study, IPF experts who were not on the ATS/ERS/JRS/ALAT guideline panel and had no

UIP on HRCT (with honeycombing)



= Strong recommendation
against surgical lung biopsy

Probable UIP on HRCT (traction bronchiectasis and bronchiolectasis without honeycombing)

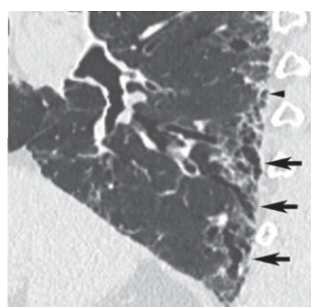


Figure 1. Consideration of surgical lung biopsy to determine histological features in patients with high-resolution computed tomography (HRCT) patterns of usual interstitial pneumonia (UIP) and probable UIP. (Top) UIP magnified view of the left lower lobe (transverse computed tomography section) showing typical characteristics of honeycombing, consisting of clustered cystic airspaces with well-defined walls and variable diameters, seen in single or multiple layers (arrows). (Bottom) Probable UIP magnified sagittal view (reconstructed) of the right lower lobe illustrating the presence of a reticular pattern with subpleural, peripheral, and basal predominance of traction bronchiolectasis that appears as tubular (arrows) or cystic (arrowhead) structures. Images reprinted from Reference 2. IPF = idiopathic pulmonary fibrosis; MDD = multidisciplinary discussion.

knowledge of the guideline's systematic reviews or recommendations answered the same questions as the ATS/ERS/JRS/ALAT panel using the modified Convergence of Opinion on Recommendations and Evidence (CORE) approach, an electronic consensus-building process (8). The recommendations developed using the modified CORE process were highly concordant with those developed by the guideline panel, including the suggestion for SLB.

In summary, it is apparent that the ATS/ERS/JRS/ALAT guideline's recommendation for SLB in patients with probable UIP has been interpreted as a mandate for SLB. This was never the intent. We emphasize that the recommendation was assigned a strength of "conditional" for the primary purpose of avoiding this interpretation, and we reiterate that there is equipoise in deciding which patients with a probable UIP pattern on HRCT warrant an SLB. Specifically, patients with probable UIP for whom the clinical context is suggestive of IPF may forgo SLB, whereas patients with probable UIP for whom the clinical context is uncertain may undergo SLB. The clinician and patient need to discuss SLB within the individual clinical context, including potential desirable and undesirable consequences, and then make the decision to either pursue or forgo SLB. ■

Martine Remy-Jardin, M.D., Ph.D.
Hôpital Calmette
Université Lille Nord de France
Lille, France

Jeffrey Myers, M.D.
Department of Pathology
University of Michigan
Ann Arbor, Michigan

Luca Richeldi, M.D., Ph.D.
Pulmonary Medicine
Università Cattolica del Sacro Cuore Sede di Roma
Roma, Lazio

Kevin C. Wilson, M.D.
Documents Department
American Thoracic Society
New York, New York
and
Department of Medicine
Boston University
Boston, Massachusetts

ORCID ID: 0000-0003-4429-2263 (K.C.W.).

Author disclosures are available with the text of this article at www.atsjournals.org.

Ganesh Raghu, M.D.
Department of Medicine
University of Washington Medical Center
Seattle, Washington

References

1. Raghu G, Collard HR, Egan JJ, Martinez FJ, Behr J, Brown KK, *et al.*; ATS/ERS/JRS/ALAT Committee on Idiopathic Pulmonary Fibrosis. An official ATS/ERS/JRS/ALAT statement: idiopathic pulmonary fibrosis: evidence-based guidelines for diagnosis and management. *Am J Respir Crit Care Med* 2011;183:788–824.

2. Raghu G, Remy-Jardin M, Meyers JL, Richeldi L, Ryerson CJ, Lederer DJ, *et al.* Diagnosis of idiopathic pulmonary fibrosis: an official ATS/ERS/JRS/ALAT clinical practice guideline. *Am J Respir Crit Care Med* 2018;198:e44–e68.
3. Institute of Medicine (US) Committee on Standards for Developing Trustworthy Clinical Practice Guidelines. Graham R, Mancher M, Wolman DM, Greenfield S, Steinberg E, editors. Clinical practice guidelines we can trust. Washington, DC: National Academies Press; 2011.
4. Raghu G, Rochwerg B, Zhang Y, Garcia CA, Azuma A, Behr J, *et al.*; American Thoracic Society; European Respiratory society; Japanese Respiratory Society; Latin American Thoracic Association. An official ATS/ERS/JRS/ALAT clinical practice guideline: treatment of idiopathic pulmonary fibrosis: an update of the 2011 clinical practice guideline. *Am J Respir Crit Care Med* 2015;192:e3–e19. [Published erratum appears in *Am J Respir Crit Care Med* 192:644.]
5. Lynch DA, Sverzellati N, Travis WD, Brown KK, Colby TV, Galvin JR, *et al.* Diagnostic criteria for idiopathic pulmonary fibrosis: a Fleischner Society white paper. *Lancet Respir Med* 2018;6:138–153.
6. Richeldi L, Wilson KC, Raghu G. Diagnosing idiopathic pulmonary fibrosis in 2018: bridging recommendations made by experts serving different societies. *Eur Respir J* 2018;52:1801485.
7. Hutchinson JP, Fogarty AW, McKeever TM, Hubbard RB. In-hospital mortality after surgical lung biopsy for interstitial lung disease in the United States: 2000 to 2011. *Am J Respir Crit Care Med* 2016;193:1161–1167.
8. Wilson KC, Schoenberg NC, Raghu G; Need for Adherence to Institute of Medicine Methodology. Idiopathic pulmonary fibrosis guideline recommendations. *Ann Am Thorac Soc* 2019;16:681–686.

Copyright © 2019 by the American Thoracic Society