



**HAL**  
open science

## Factors associated with daily life physical activity in patients with asthma

Florence Hennegrave, Olivier Le Rouzic, Stephanie Fry, Helene Behal, Cecile Chenivesse, Benoit Wallaert

### ► To cite this version:

Florence Hennegrave, Olivier Le Rouzic, Stephanie Fry, Helene Behal, Cecile Chenivesse, et al.. Factors associated with daily life physical activity in patients with asthma. Health Science Reports, 2018, Health Sci Rep, 1, pp.e84. 10.1002/hsr2.84 . hal-02868957

**HAL Id: hal-02868957**

**<https://hal.univ-lille.fr/hal-02868957>**

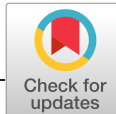
Submitted on 15 Jun 2020

**HAL** is a multi-disciplinary open access archive for the deposit and dissemination of scientific research documents, whether they are published or not. The documents may come from teaching and research institutions in France or abroad, or from public or private research centers.

L'archive ouverte pluridisciplinaire **HAL**, est destinée au dépôt et à la diffusion de documents scientifiques de niveau recherche, publiés ou non, émanant des établissements d'enseignement et de recherche français ou étrangers, des laboratoires publics ou privés.



Distributed under a Creative Commons Attribution 4.0 International License



## RESEARCH ARTICLE

# Factors associated with daily life physical activity in patients with asthma

Florence Hennegrave<sup>1</sup> | Olivier Le Rouzic<sup>1</sup> | Stéphanie Fry<sup>1</sup> | Hélène Behal<sup>2</sup> |  
Cécile Chenivresse<sup>1</sup> | Benoit Wallaert<sup>1</sup>

<sup>1</sup>Service de Pneumologie et ImmunoAllergologie, Centre de Référence constitutif des Maladies Pulmonaires Rares, Univ. Lille, CHU Lille, Hopital Calmette, Lille, France

<sup>2</sup>Department of Biostatistics, Univ. Lille, EA 2694-Santé Publique: Epidémiologie et Qualité des Soins, CHU Lille, Lille, France

**Correspondence**

Pr. Benoit Wallaert, CHU Lille, Hopital Calmette, Service de Pneumologie et ImmunoAllergologie, Centre de Référence constitutif des Maladies Pulmonaires Rares, Univ. Lille, F-59000 Lille, France.  
Email: benoit.wallaert@chru-lille.fr

**Abstract**

**Background and Objectives:** Little is known about the consequences of asthma on daily life physical activity (DL<sub>PA</sub>). The aim of this study was to evaluate DL<sub>PA</sub> and determine its relationship to clinical and functional parameters in patients with asthma.

**Methods:** This was a single-center prospective study of DL<sub>PA</sub> conducted between May 2015 and June 2016 in northern France. Fifty-one adult patients with asthma and 36 healthy control subjects were enrolled. Four DL<sub>PA</sub> parameters were assessed for 5 consecutive days with a physical activity monitor: number of steps walked per day (SPD), total energy expenditure (EE, in kcal/day), EE spent in physical activity requiring  $\geq 3$  metabolic equivalents (METs), and time (min) spent in activities requiring  $\geq 3$  METs. Clinical characteristics, pulmonary function tests, 6-minute walk test, and four questionnaires (modified Medical Research Council [mMRC] for dyspnea, asthma control test [ACT], quality of life [AQLQ], and hospital anxiety and depression scale [HADS]), were evaluated. Comparisons of DL<sub>PA</sub> parameters between the two groups were performed using an analysis of covariance adjusted for age, sex, and body mass index (BMI). Relationships between DL<sub>PA</sub> parameters and patient characteristics were assessed in multivariable linear regression models.

**Results:** Compared with patients with mild/moderate asthma, those with severe asthma had lower mean ( $\pm$  standard deviation) forced expiratory volume in 1 s (FEV<sub>1</sub>) ( $66 \pm 24$  vs  $94 \pm 15\%$  predicted,  $P < 0.001$ ), ACT score ( $16.7 \pm 4.5$  vs  $19.8 \pm 4.2$ ,  $P = 0.015$ ), and AQLQ score ( $157 \pm 40$  vs  $184 \pm 33$ ,  $P = 0.012$ ). There were no significant differences between the two groups in SPD ( $6560 \pm 3915$  vs  $8546 \pm 3431$ ; adjusted  $P = 0.95$ ), EE in physical activity requiring  $\geq 3$  METs ( $620 \pm 360$  vs  $660 \pm 140$  kcal/day;  $P = 0.86$ ), time spent in activities requiring EE  $\geq 3$  ( $120 \pm 54$  vs  $121 \pm 32$  min/day;  $P = 0.69$ ), or total EE ( $2606 \pm 570$  vs  $2666 \pm 551$  kcal/day;  $P = 0.80$ ). These four DL<sub>PA</sub> measures showed strong inter-parameter correlations in patients with asthma ( $r = 0.37$ – $0.95$ , all  $P < 0.01$ ). All four parameters were lower in the patients with asthma group than in the control group: SPD,  $7651 \pm 3755$  vs  $11704 \pm 4054$  (adjusted  $P < 0.001$ ); EE in activities requiring  $\geq 3$  METs,  $642 \pm 360$  vs  $852 \pm 374$  kcal/day (adjusted  $P = 0.041$ ); time spent in activities requiring  $\geq 3$  EE,  $120 \pm 73$  vs  $189 \pm 85$  min (adjusted  $P = 0.005$ ); and total EE,  $2639 \pm 555$  vs  $2746 \pm 449$  kcal/day (adjusted  $P = 0.007$ ). In the patients with asthma

This is an open access article under the terms of the Creative Commons Attribution License, which permits use, distribution and reproduction in any medium, provided the original work is properly cited.

© 2018 The Authors. Health Science Reports published by Wiley Periodicals, Inc.

group, the number of SPD correlated with age, FEV<sub>1</sub>, mMRC score, 6-minute walk test distance, and HADS scores, but not with BMI or ACT test score. Using multivariate analysis, the number of SPD was associated with only age, anxiety, and FEV<sub>1</sub>, whereas total EE was associated with mMRC score and BMI.

**Conclusion:** Age, anxiety, and FEV<sub>1</sub> were significantly associated with the number of SPD in patients with asthma. Addressing anxiety should be further studied as way to attempt to increase physical activity in patients with asthma.

#### KEYWORDS

anxiety, asthma, asthma control, daily life physical activity, depression, severity

## 1 | INTRODUCTION

Asthma is a chronic inflammatory disease of the airways that is estimated by the World Health Organization to affect ~300 million people worldwide.<sup>1</sup> According to the 2015 Global Initiative for Asthma, the degree to which physical activity is limited should be considered when assessing asthma control.<sup>1</sup> Physical activity is an important clinical parameter related to morbidity and mortality in many chronic diseases,<sup>2,3</sup> and higher levels of physical activity are associated with better lung function in asthma patients.<sup>4</sup> However, a recent review suggests that individuals with asthma are less likely than healthy subjects to engage in physical activity, despite its beneficial effects on symptom management, lung function, and mental health; conversely, physical inactivity was found to be associated with negative health consequences.<sup>5</sup> Patients with chronic obstructive pulmonary disease (COPD) also have low levels of physical activity, but this is not reflected in the clinical characteristics commonly used to determine disease severity.<sup>6,7</sup>

Few studies have objectively evaluated daily life physical activity (DL<sub>PA</sub>) levels in patients with asthma. Recently, Bahmer et al<sup>8</sup> and Cordova-Rivera et al,<sup>9</sup> using objective DL<sub>PA</sub> parameters, also reported that physical activity was reduced in severe asthma patients. van't Hul et al studied a large group of adults with bronchial asthma and found lower than average values for the number of steps per day, total energy expenditure (EE), and time spent in intensive physical activity; however, the study did not include patients with severe asthma.<sup>10</sup> In contrast, Sousa et al found no correlation between DL<sub>PA</sub> and asthma severity in children; indeed, DL<sub>PA</sub> levels were similar for children with good asthma control and those without asthma.<sup>11</sup> With these studies in mind, we sought to identify some of the factors, including anxiety and depression, that might influence DL<sub>PA</sub> in adult patients with severe or mild/moderate asthma. We examined the relationships between DL<sub>PA</sub> and the results of pulmonary function tests, the 6-minute walk test (6MWT), and of four questionnaires: the asthma control test (ACT), asthma quality of life questionnaire (AQLQ), modified Medical Research Council (mMRC) dyspnea questionnaire, and the hospital anxiety and depression scale (HADS) questionnaire.

## 2 | METHODS

### 2.1 | Patients

We enrolled 51 consecutive patients with asthma (28 mild/moderate, 23 severe) who were referred to our hospital between December

2013 and January 2015 for routine follow-up. Severe asthma was defined as "asthma which requires treatment with high dose inhaled corticosteroids plus a second controller (and/or systemic corticosteroids) to prevent it from becoming 'uncontrolled' or which remains 'uncontrolled' despite this therapy."<sup>12</sup> The control group included 36 healthy subjects who were students or relatives of employees at the hospital. All control subjects had normal spirometry results. None of the patients or control subjects was engaged in exercise training programs prior to the study. All individuals gave informed consent. Approval for the use of these data was provided by the Institutional Review Board of the French Learned Society for Pulmonology (CEPRO 2011-039).

### 2.2 | Pulmonary function tests

Forced vital capacity (FVC), forced expiratory volume in 1 s (FEV<sub>1</sub>), and total lung capacity were measured by spirometry and plethysmography with a Jaeger-Masterlab® cabin. Values are expressed as the percentage of the predicted normal value.<sup>13-15</sup> The 6MWT was performed in accordance with international recommendations.<sup>16</sup>

### 2.3 | Assessment of DL<sub>PA</sub>

Subjects were equipped with a physical activity monitor (SenseWear® Pro armband and SenseWear software version 8.0; BodyMedia Inc., Pittsburgh, PA, USA) and instructed to wear the device continuously, except while showering or bathing, for 5 consecutive days (3 weekdays and 2 weekend days). The device was positioned on the upper right arm, at the midpoint between the acromion and the olecranon. This multi-axial device has been validated in diverse populations, including patients with chronic diseases.<sup>8,17-19</sup> DL<sub>PA</sub> was assessed by measuring four parameters: the average number of steps per day (SPD), the average time (min/day) spent in activities with an estimated EE of ≥3 metabolic equivalents (METs), the average EE spent in activities requiring ≥3 METs (kcal/day), and the average total daily EE (kcal/day). METs reflect the energy cost of physical activity as a multiple of the patient's resting metabolic rate.<sup>20</sup> EE ≥ 3.0 METs is considered to be at least moderate activity.<sup>21</sup>

### 2.4 | Evaluation of dyspnea

Subjects reported their perception of dyspnea occurring during DL<sub>PA</sub> using the mMRC self-administered questionnaire, which was assessed

at the time of evaluation. The mMRC questionnaire is a unidimensional assessment of how dyspnea/ breathlessness limits activity and affects functional ability, employment (disability), quality of life, and health status.<sup>22</sup> The questionnaire was developed in the 1950s by the Medical Research Council with the aim of detecting pneumoconiosis in coal workers, and was later standardized by Fletcher.<sup>23</sup> Since then, it has been validated in several chronic respiratory diseases, including asthma.<sup>24</sup> The five questions assess perceived breathlessness on a scale from 0 (not troubled by breathlessness except during strenuous exercise) to 4 (very severe dyspnea: too breathless to leave the house or breathless when dressing or undressing).

## 2.5 | Asthma control test (ACT)

The ACT survey is a self-administered questionnaire consisting of five items assessing asthma symptoms (daytime and nocturnal), use of rescue medications, and the effect of asthma on daily functioning.<sup>25</sup> Each item includes five response options corresponding to a five-point Likert-type rating scale. Responses for each of the five items are summed to yield a score ranging from 5 (poor control) to 25 (complete control). An ACT score > 19 indicates well-controlled asthma.

## 2.6 | Quality of life

The AQLQ comprises 32 items and is designed to identify the areas of functioning impaired by asthma in adult patients.<sup>26</sup> It measures four domains: activity limitation (11 items), emotional function (five items), exposure to environmental stimuli (four items), and symptoms (12 items). The patient describes his/her experience with each domain in the previous 2 weeks, using a seven-point scale (1, severely impaired to 7, not impaired at all). Higher scores indicate better quality of life.

## 2.7 | Evaluation of anxiety and depression

The HADS questionnaire was designed to identify and quantify the two most common forms of psychological disorders in medical patients, anxiety and depression.<sup>27</sup> Both subscales range from 0 to 21, with a score of  $\geq 8$  indicating clinically relevant symptoms.

## 2.8 | Statistical analysis

Statistical analysis was performed using SAS statistical software, version 9.3 (SAS Institute Inc., Cary, NC) and GraphPad Prism 5 (GraphPad Software Inc., La Jolla, CA). Normal distribution of the data was checked graphically and using the Shapiro-Wilk test. Continuous variables are expressed as mean  $\pm$  standard deviation (SD) for normally distributed data or median and range [min-max] for non-normally distributed data. Categorical variables are presented as frequencies and percentages. Categorical parameters were compared between healthy subjects and asthma patients by the Chi-square test or Fisher's exact test. Continuous variables were compared between the two groups by Student's *t*-test or the Mann-Whitney *U*-test. The same tests were used to compare patients with mild/moderate and severe asthma. Comparisons of DL<sub>PA</sub> parameters between two groups were performed after adjustment on pre-specified confounding factors (age, sex, and body mass index [BMI]) using analysis of covariance. Correlations between the

four DL<sub>PA</sub> parameters in asthma patients were assessed by calculating Pearson's correlation coefficients. Factors associated with each DL<sub>PA</sub> parameter in patients with asthma were assessed using univariate and multivariate analyses. Candidate factors were age, BMI, FEV<sub>1</sub>, FVC, FEV<sub>1</sub>/FVC, ACT score, AQLQ score, HADS scores, mMRC score, and the 6MWT distance. Univariate analysis was performed by calculating Pearson's correlation coefficients. Univariate predictors (at  $P < 0.1$ ) were entered into multivariable linear regression models (one per DL<sub>PA</sub> parameter). Prior to the multivariable analysis, we first checked for the absence of co-linearity between candidate variables by calculating the variation inflation factor<sup>28</sup> and then tested all possible first-order interactions between candidate factors in separate linear regression models. To simplify the multivariable models, a backward-stepwise selection procedure was used with a removal criteria of  $P = 0.05$ . Statistical testing was done at the two-tailed  $\alpha$  level of 0.05.

## 3 | RESULTS

The characteristics of the patients and healthy control subjects are summarized in Table 1. The two groups were comparable in terms of sex, age, and smoking status, whereas patients had significantly lower FEV<sub>1</sub>, FVC, and FEV<sub>1</sub>/FVC ratio than the healthy controls (mean  $\pm$  SD: 82  $\pm$  24 vs 104  $\pm$  4% predicted,  $P < 0.001$ ; 99  $\pm$  18 vs 106  $\pm$  3% predicted,  $P = 0.010$ ; and 68  $\pm$  15 vs 79  $\pm$  2%, respectively,  $P < 0.001$ ). Patients with severe asthma were older than those with mild/moderate asthma (mean  $\pm$  SD: 54  $\pm$  16 vs 34  $\pm$  11 years,  $P < 0.001$ ) and had significantly lower FEV<sub>1</sub> (mean  $\pm$  SD: 66  $\pm$  24 vs 94  $\pm$  15% predicted,  $P < 0.001$ ), FVC (mean  $\pm$  SD: 89  $\pm$  17 vs 106  $\pm$  15% predicted,  $P < 0.001$ ), and FEV<sub>1</sub>/FVC (mean  $\pm$  SD: 60  $\pm$  16 vs 75  $\pm$  9%,  $P < 0.001$ ), but there were no significant differences in sex ratio, BMI, history of smoking, or HADS scores. Patients with severe asthma also had lower ACT scores (mean  $\pm$  SD: 16.7  $\pm$  4.5 vs 19.8  $\pm$  4.2,  $P = 0.015$ ), AQLQ scores (mean  $\pm$  SD: 157  $\pm$  40 vs 184  $\pm$  33,  $P = 0.012$ ), shorter 6MWT distance (mean  $\pm$  SD: 462  $\pm$  94 vs 608  $\pm$  88 m,  $P < 0.001$ ), and higher mMRC dyspnea scores reflecting greater dyspnea upon effort (median [min-max]: 1 [0-4] vs 0 [0-1],  $P < 0.001$ ) compared with patients with mild/moderate asthma.

As shown in Table 2 and Figure 1, patients with asthma walked significantly fewer SPD than the control subjects (mean  $\pm$  SD: 7651  $\pm$  3755 vs 11704  $\pm$  4054,  $P < 0.001$ ) and spent significantly less time and effort in physical activities, as demonstrated by their lower total daily EE (mean  $\pm$  SD: 2639  $\pm$  555 vs 2746  $\pm$  449 kcal/day, adjusted  $P = 0.007$ ), lower EE  $\geq 3$  METs (mean  $\pm$  SD: 642  $\pm$  360 vs 852  $\pm$  374 kcal/day, adjusted  $P = 0.041$ ), and shorter time spent in at least moderate activity (mean  $\pm$  SD: 120  $\pm$  73 vs 189  $\pm$  85 min/day, adjusted  $P = 0.005$ ).

As shown in Table 3, none of the DL<sub>PA</sub> parameters were significantly different between the severe and mild/moderate asthma patient groups. However, for the whole patient cohort ( $n = 51$ ), there were strong correlations between all of the DL<sub>PA</sub> parameters (Pearson's  $r$  0.56-0.95,  $P < 0.001$  for all correlations), with the exception of a weak correlation between the number of SPD and total daily EE ( $r = 0.37$ ,  $P = 0.008$ ; Table 4).

**TABLE 1** Characteristics of healthy control subjects and asthma patients

Characteristic	Healthy Controls (n = 36)	All Asthma Patients (n = 51)	P Value	Mild/Moderate Asthma (n = 28)	Severe Asthma (n = 23)	P Value
Male, n (%)	12 (33)	21 (41)	0.46 <sup>a</sup>	13 (46)	8 (35)	0.40 <sup>a</sup>
Age, years	45 ± 16	43 ± 17	0.58 <sup>b</sup>	34 ± 11	54 ± 16	<0.001 <sup>b</sup>
BMI, kg/m <sup>2</sup>	23 ± 3	26 ± 5	0.002 <sup>b</sup>	25 ± 3	27 ± 6	0.10 <sup>b</sup>
FEV <sub>1</sub> , % predicted	104 ± 4	82 ± 24	<0.001 <sup>b</sup>	94 ± 15	66 ± 24	<0.001 <sup>b</sup>
FVC, % predicted	106 ± 3	99 ± 18	0.010 <sup>b</sup>	106 ± 15	89 ± 17	<0.001 <sup>b</sup>
FEV <sub>1</sub> /FVC, %	79 ± 2	68 ± 15	<0.001 <sup>b</sup>	75 ± 9	60 ± 16	<0.001 <sup>b</sup>
Atopy, n (%)	NA	44 (86)	-	27 (96)	17 (74)	0.037 <sup>c</sup>
Age at diagnosis, years	NA	23 ± 14	-	21 ± 11	24 ± 16	0.50 <sup>b</sup>
Current smokers, n (%)	7 (19)	11 (21)	0.56 <sup>a</sup>	7 (25)	4 (17)	0.73 <sup>c</sup>
Smoking, pack-year	4 [1-35]	6 [1-67]	-	4 [1-11]	20 [3-50]	-
Dyspnea, mMRC score	NA	1 [0-4]	-	0 [0-1]	1 [0-4]	<0.001 <sup>d</sup>
ACT score	NA	18.4 ± 4.5	-	19.8 ± 4.2	16.7 ± 4.5	0.015 <sup>b</sup>
6MWT distance, m	NA	543 ± 116	-	608 ± 88	462 ± 94	<0.001 <sup>b</sup>
HADS score, depression	NA	3.8 ± 3.0	-	3.3 ± 2.5	4.4 ± 3.5	0.18 <sup>b</sup>
HADS score, anxiety	NA	7.4 ± 3.5	-	7.2 ± 3.5	7.7 ± 3.5	0.62 <sup>b</sup>
AQLQ score	NA	172 ± 38	-	184 ± 33	157 ± 40	0.012 <sup>b</sup>

<sup>a</sup>Chi-square test.<sup>b</sup>Student's t-test.<sup>c</sup>Fisher's exact test.<sup>d</sup>Mann-Whitney U-test.

Data are presented as the mean ± SD except for smoking and mMRC score, which are median [min-max].

Abbreviations: 6MWT, 6-minute walk test; ACT, asthma control test; AQLQ, asthma quality of life questionnaire; BMI, body mass index; FEV<sub>1</sub>, forced expiratory volume in 1 s; FVC, forced vital capacity; HADS, hospital anxiety and depression scale; mMRC, modified Medical Research Council questionnaire; NA, not applicable.**TABLE 2** Daily physical activity in healthy control subjects and patients with asthma

Parameter	Health Controls (n = 36)	Asthma Patients (n = 51)	P Value	Adjusted P Value*
Number of steps per day	11 704 ± 4054	7651 ± 3755	<0.001	<0.001
Total energy expenditure, kcal/day	2746 ± 449	2639 ± 555	0.021	0.007
Energy expenditure ≥3 METs, kcal/day	852 ± 374	642 ± 360	0.005	0.041
Duration of physical activity ≥3 METs, min/day	189 ± 85	120 ± 73	<0.001	0.005

Data are presented as the mean ± SD.

\*Adjusted for age, sex, and body mass index.

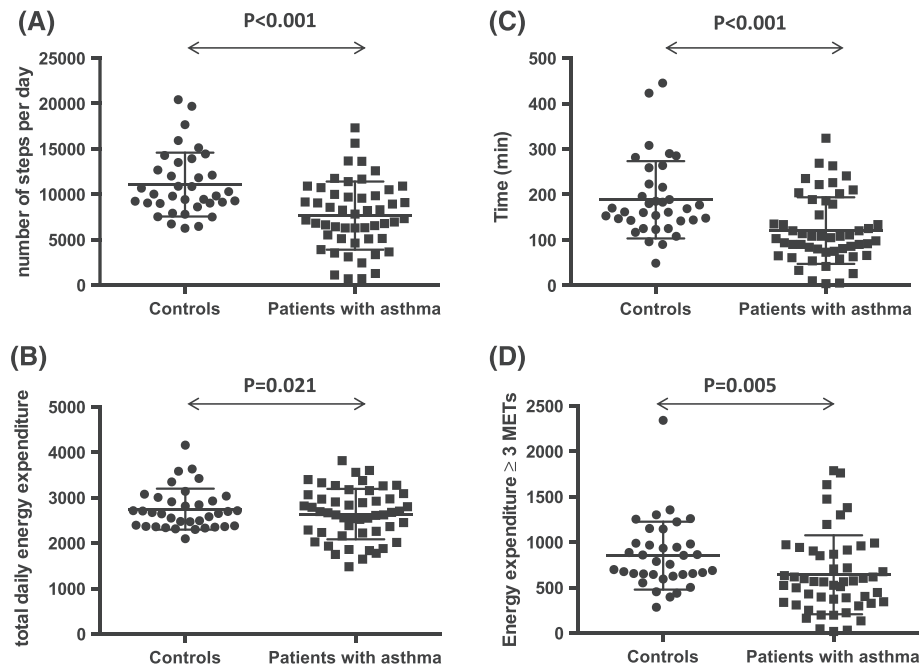
Abbreviation: METs, metabolic equivalents.

In the asthma patient group, the mean number of SPD correlated with age ( $r = -0.45$ ,  $P < 0.001$ ), FEV<sub>1</sub> ( $r = 0.41$ ,  $P = 0.003$ ), FEV<sub>1</sub>/FVC ( $r = 0.50$ ,  $P < 0.001$ ), mMRC score ( $r = -0.39$ ,  $P = 0.004$ ), 6MWT distance ( $r = 0.38$ ,  $P = 0.007$ ), HADS anxiety score ( $r = -0.30$ ,  $P = 0.035$ ). There was no significant correlation between the mean number of SPD and HADS depression score ( $r = -0.26$ ,  $P = 0.070$ ) (Table S1). Interactions between age and FEV<sub>1</sub>, age and anxiety, and FEV<sub>1</sub> and anxiety on the number of SPD were significant at  $P < 0.1$  and were included in the multivariable model together with the individually significant factors. After backward-stepwise selection, only age, interactions between age and FEV<sub>1</sub>, and interactions between FEV<sub>1</sub> and anxiety were associated with the number of SPD ( $R^2 = 0.51$ ; Table 5).

While total EE correlated with the mMRC score ( $r = -0.30$ ,  $P = 0.03$ ), we did not observe significant correlations between total EE and HADS anxiety score ( $r = -0.27$ ,  $P = 0.058$ ) or BMI ( $r = 0.26$ ,  $P = 0.063$ ). No significant interactions between these parameters and total EE were found. In multivariate analysis, only BMI and mMRC score remained significantly associated with the total EE (Table S2).

The EE from activity requiring ≥3METs showed no significant correlation with HADS anxiety score ( $r = -0.27$ ,  $P = 0.057$ ) or mMRC score ( $r = -0.25$ ,  $P = 0.077$ ), and there was no interaction between these two parameters. In multivariate analysis, neither parameter remained significantly associated with EE ≥ 3 METS (Table S3).

No significant correlation was observed between the time spent in moderate activity (≥3 METs) and BMI ( $r = -0.25$ ,  $P = 0.081$ ), mMRC



**FIGURE 1** Comparison of daily life physical activities in asthma patients and healthy control subjects. A, Number of steps per day; B, total daily energy expenditure; C, duration of physical activity  $\geq 3$  METs per day; and D, energy expended during physical activity  $\geq 3$  METs in healthy controls ( $n = 36$ ) and asthma patients ( $n = 51$ ). Errors bars indicate mean  $\pm$  SD. Differences were analyzed using Student's *t*-test

**TABLE 3** Daily physical activity in patients with asthma

Parameter	Mild/Moderate Asthma $n = 28$	Severe Asthma $n = 23$	<i>P</i> Value	Adjusted <i>P</i> Value*
Number of steps per day	8546 $\pm$ 3431	6560 $\pm$ 3915	0.06	0.95
Total energy expenditure, kcal/day	2666 $\pm$ 551	2606 $\pm$ 570	0.70	0.80
Energy expenditure $\geq 3$ METs, kcal/day,	660 $\pm$ 140	620 $\pm$ 360	0.75	0.86
Duration of physical activity $\geq 3$ METs, min/day	121 $\pm$ 32	120 $\pm$ 54	0.95	0.69

Data are presented as the mean  $\pm$  SD.

\*Adjusted for age, sex, and body mass index.

Abbreviation: METs, metabolic equivalents.

**TABLE 4** Correlation between the four parameters of daily life physical activity in patients with asthma ( $n = 51$ )

Parameter	Total energy Expenditure (kcal/day)	Energy Expenditure $\geq 3$ METs (kcal/day)	Duration of Physical Activity $\geq 3$ METs (min/day)
Number of steps per day	$r = 0.37^a$ $P = 0.008$	$r = 0.56$ $P < 0.001$	$r = 0.63$ $P < 0.001$
Total energy expenditure	-	$r = 0.72$ $P < 0.001$	$r = 0.56$ $P < 0.001$
Energy expenditure $\geq 3$ METs	-	-	$r = 0.95$ $P < 0.001$

<sup>a</sup>Pearson's correlation coefficients.

Abbreviation: METs, metabolic equivalents.

score ( $r = -0.24$ ,  $P = 0.088$ ), or HADS anxiety score ( $r = -0.24$ ,  $P = 0.094$ ). No interactions were found in bivariate analysis. In multivariate analysis, only mMRC score was significantly associated with the time spent in moderate activity (Table S4).

## 4 | DISCUSSION

The results of this study show that DL<sub>PA</sub> is decreased in adult patients with asthma, and that the number of SPD is associated with age,

**TABLE 5** Multivariable linear regression analysis of factors affecting the number of steps per day in patients with asthma

Factor	Estimate	SE	P Value	Partial R <sup>2</sup> (%)
Age	-309.0	85.3	<0.001	24
FEV <sub>1</sub>	8.6	61.3	0.89	3
HADS score, anxiety	793.4	431.2	0.07	9
Age × FEV <sub>1</sub> <sup>a</sup>	3.0	1.1	0.011	6
FEV <sub>1</sub> × HADS score, anxiety	-14.0	5.2	0.010	8

<sup>a</sup>"x" indicates interaction.

Abbreviations: FEV<sub>1</sub>, forced expiratory volume in 1 s; HADS, hospital anxiety and depression scale; SE, standard error.

anxiety, and FEV<sub>1</sub>. Currently, there are two methods of evaluating physical activity levels: subjective methods such as questionnaires and diaries, and objective methods such as motion sensors, as used here to assess DL<sub>PA</sub>. Although no studies have yet directly compared objective and subjective measurements of physical activity, research in other fields suggests that the perception of symptoms does not rigorously correlate with sensory stimuli. For instance, the perception of dyspnea intensity by asthma patients is not strictly proportional to bronchial obstruction; similarly, the perception of asthma control by the patient and medical staff differ markedly. With regard to the duration of activity monitoring necessary for accurate assessment, a review of studies measuring physical activity in adults with an accelerometer determined that 3 to 5 days of monitoring were required to obtain reliable measurements.<sup>29</sup> In a recent study of COPD patients, physical activity was assessed over 10 days, and the data were evaluated from the last seven daily records.<sup>30</sup> The data presented here for asthma patients were collected over 5 consecutive days and were similar for weekdays and weekend days. Thus, the duration of data collection in our study is in line with the recommendation. Interestingly, the number of SPD walked by patients with severe asthma in our study was similar to that reported by Bahmer et al<sup>8</sup> and Cordova-Rivera et al for patients with severe asthma.<sup>9</sup>

Most previous studies examining associations between physical activity limitations and asthma control used subjective measures of DL<sub>PA</sub>. Recently, van't Hul et al reported that a low level of habitual physical activity was associated with poor asthma control<sup>10</sup>; however, the correlations between asthma control scores and physical activity were weak. Similarly, older adults with poor asthma control were nearly twice as likely as those with well-controlled asthma to have limitations in DL<sub>PA</sub>.<sup>31</sup> Our results are in agreement with a study with adolescent asthma patients demonstrating that physical activity levels were not dependent on asthma severity.<sup>32</sup> Moreover, DL<sub>PA</sub> was not influenced by asthma control per se in our patient group. These results are in agreement with Yiallourous et al, who reported that schoolchildren (aged 8-9 years) with active or inactive asthma had similar levels of objectively assessed physical activity.<sup>33</sup>

We found that impairment of FEV<sub>1</sub>, which is representative of the magnitude of bronchial obstruction in asthma, was associated with the number of SPD. Bahmer reported that FEV<sub>1</sub> and peak expiratory flow were poor markers of physical activity in asthma patients, and they also found that reduced DL<sub>PA</sub> was associated with impulse oscillometric airway resistance and small airway dysfunction,<sup>8</sup> which was not evaluated in our study. Interestingly, no consistent association

has been found between active lifestyle/physical inactivity and pulmonary function (after adjustment for confounding factors) in healthy subjects, lung-healthy adolescents,<sup>34</sup> or adult smokers.<sup>35</sup> In our study, the number of SPD was not associated with BMI, as previously reported for non-obese individuals.<sup>36</sup> However, we did detect a correlation between BMI and total EE, and this was stronger after adjustment for mMRC score. Total EE includes the EE not only during physical activity but also at rest. Resting EE is the sum of the energy expended by a fasted individual at rest in a thermo-neutral environment plus the thermic effect of feeding. Thus, body composition, ethnicity, physical fitness level, hormonal status, and multiple environmental factors can all influence total EE,<sup>37</sup> which might explain the correlation between total EE and BMI detected here.

The number of SPD is also influenced by non-physiological factors, including depression and anxiety.<sup>38-41</sup> We found a significant correlation between SPD and depression and anxiety scores in our asthma patients, although, interestingly, only age, anxiety, and FEV<sub>1</sub> showed significant associations with the number of SPD. Similarly, Vermeulen et al recently reported that psychological burden was the major activity-limiting factor for asthma patients.<sup>42</sup> According to Herrmann,<sup>43</sup> it is unlikely that age affects HADS scores. Indeed, a recent study of 176 Chinese asthma patients found that age did not have a major influence on anxiety.<sup>44</sup> DL<sub>PA</sub> is significantly lower in depressed compared with non-depressed COPD patients,<sup>45</sup> and anxiety is highly prevalent among asthma patients,<sup>46-48</sup> where it is associated with more exacerbations,<sup>49</sup> more hospital readmissions,<sup>50</sup> and poorer asthma control.<sup>51,52</sup> The molecular mechanisms responsible for anxiety are not well understood and might involve abnormal neural processing of stimuli.<sup>53,54</sup> Therefore, it is possible that asthma patients avoid exercise for fear of triggering symptoms,<sup>55</sup> which leads to a sustained overall aversion to exercise.<sup>56</sup> Studies of patients with other chronic diseases have failed to demonstrate that increases in DL<sub>PA</sub> can reduce symptoms of anxiety and depression.<sup>57-59</sup> However, it remains to be determined whether treatment for anxiety (medication or supportive psychotherapy) can increase DL<sub>PA</sub> in asthma patients. Encouragingly, two studies reported that asthma patients participating in a pulmonary rehabilitation program were able to increase their physical activity without exacerbating asthma, and in fact, it significantly improved their quality of life.<sup>60,61</sup> However, anxiety and depression were not evaluated in those studies.

The main limitation of our study is the small sample size. Therefore, we may have overlooked several interactions/associations due to inadequate statistical power. In addition, we acknowledge that we cannot exclude a degree of overfitting in the multivariate analyses given the number of variables analyzed. Further larger studies are warranted to confirm our findings.

## 5 | CONCLUSIONS

Age, anxiety, and FEV<sub>1</sub> are associated with the number of SPD in patients with asthma, who show reduced DL<sub>PA</sub> compared with healthy subjects. Addressing anxiety should be further studied as way to attempt to increase physical activity in patients with asthma.

## ACKNOWLEDGEMENTS

The authors wish to thank Anne M. O'Rourke for editing the manuscript.

## CONFLICT OF INTEREST

For each author, no significant conflicts of interest exist with any companies or organizations whose products or services are mentioned in this article.

## AUTHOR CONTRIBUTIONS

Conceptualization: Florence Hennegrave, Stéphanie Fry, Benoit Wallaert

Formal Analysis: Héléne Behal, Florence Hennegrave, Olivier Le Rouzic

Investigation: Florence Hennegrave, Stéphanie Fry, Benoit Wallaert

Writing – original draft: Florence Hennegrave

Writing – review and editing: Florence Hennegrave, Stéphanie Fry,

Cécile Chenivresse, Benoit Wallaert

## ORCID

Olivier Le Rouzic  <http://orcid.org/0000-0003-4439-2950>

Benoit Wallaert  <http://orcid.org/0000-0002-2075-4315>

## REFERENCES

- Reddel HK, Bateman ED, Becker A, et al. A summary of the new GINA strategy: a roadmap to asthma control. *Eur Respir J*. 2015;46:622-639.
- Blair SN, Kohl HW 3rd, Paffenbarger RS Jr, Clark DG, Cooper KH, Gibbons LW. Physical fitness and all-cause mortality. A prospective study of healthy men and women. *JAMA*. 1989;262:2395-2401.
- Lee I-M, Shiroma EJ, Lobelo F, Puska P, Blair SN, Katzmarzyk PT. Effect of physical inactivity on major non-communicable diseases worldwide: an analysis of burden of disease and life expectancy. *Lancet*. 2012;380:219-229.
- Ritz T, Rosenfield D, Steptoe A. Physical activity, lung function, and shortness of breath in the daily life of individuals with asthma. *Chest*. 2010;138:913-918.
- Avallone KM, McLeish AC. Asthma and aerobic exercise: a review of the empirical literature. *J Asthma*. 2013;50:109-116.
- Garcia-Rio F, Rojo B, Casitas R, et al. Prognostic value of the objective measurement of daily physical activity in patients with COPD. *Chest*. 2012;142:338-346.
- Troosters T, Sciruba F, Battaglia S, et al. Physical inactivity in patients with COPD, a controlled multi-center pilot-study. *Respir Med*. 2010;104:1005-1011.
- Bahmer T, Waschki B, Schatz F, et al. Physical activity, airway resistance and small airway dysfunction in severe asthma. *Eur Respir J*. 2017;49.
- Cordova-Rivera L, Gibson PG, Gardiner PA, Powell H, McDonald VM. Physical activity and exercise capacity in severe asthma: key clinical associations. *J Allergy Clin Immunol Pract*. 2018;6:814-822.
- van't Hul AJ, Frouws S, van den Akker E, et al. Decreased physical activity in adults with bronchial asthma. *Respir Med*. 2016;114:72-77.
- Sousa AW, Cabral ALB, Martins MA, Carvalho CRF. Daily physical activity in asthmatic children with distinct severities. *J Asthma*. 2014;51:493-497.
- Chung KF, Wenzel SE, Brozek JL, et al. International ERS/ATS guidelines on definition, evaluation and treatment of severe asthma. *Eur Respir J*. 2014;43:343-373.
- Standardized lung function testing. Official statement of the European Respiratory Society. *Eur Respir J Suppl*. 1993;16:1-100.
- Stocks J, Quanjer PH. Reference values for residual volume, functional residual capacity and total lung capacity. ATS Workshop on Lung Volume Measurements. Official Statement of The European Respiratory Society. *Eur Respir J*. 1995;8:492-506.
- Pellegrino R. Interpretative strategies for lung function tests. *Eur Respir J*. 2005;26:948-968.
- ATS statement: guidelines for the six-minute walk test. *Am J Respir Crit Care Med*. 2002;166:111-117.
- Pitta F, Troosters T, Probst VS, Spruit MA, Decramer M, Gosselink R. Quantifying physical activity in daily life with questionnaires and motion sensors in COPD. *Eur Respir J*. 2006;27:1040-1055.
- St-Onge M, Mignault D, Allison DB, Rabasa-Lhoret R. Evaluation of a portable device to measure daily energy expenditure in free-living adults. *Am J Clin Nutr*. 2007;85:742-749.
- Wallaert B, Monge E, Le Rouzic O, Wémeau-Stervinou L, Salleron J, Grosbois J-M. Physical activity in daily life of patients with fibrotic idiopathic interstitial pneumonia. *Chest*. 2013;144:1652-1658.
- Ainsworth BE, Haskell WL, Whitt MC, et al. Compendium of physical activities: an update of activity codes and MET intensities. *Med Sci Sports Exerc*. 2000;32:S498-S504.
- Garber CE, Blissmer B, Deschenes MR, et al. American College of Sports Medicine position stand. Quantity and quality of exercise for developing and maintaining cardiorespiratory, musculoskeletal, and neuromotor fitness in apparently healthy adults: guidance for prescribing exercise. *Med Sci Sports Exerc*. 2011;43:1334-1359.
- Parshall MB, Schwartzstein RM, Adams L, et al. An official American Thoracic Society statement: update on the mechanisms, assessment, and management of dyspnea. *Am J Respir Crit Care Med*. 2012;185:435-452.
- Fletcher CM. The clinical diagnosis of pulmonary emphysema; an experimental study. *Proc R Soc Med*. 1952;45:577-584.
- Mahler DA, Wells CK. Evaluation of clinical methods for rating dyspnea. *Chest*. 1988;93:580-586.
- Nathan RA, Sorkness CA, Kosinski M, et al. Development of the asthma control test: a survey for assessing asthma control. *J Allergy Clin Immunol*. 2004;113:59-65.
- Leroyer C, Lebrun T, Proust A, et al. Knowledge, self-management, compliance and quality of life in asthma: a cross-sectional study of the French version of the Asthma Quality of Life Questionnaire. *Qual Life Res*. 1998;7:267-272.
- Zigmond AS, Snaith RP. The hospital anxiety and depression scale. *Acta Psychiatr Scand*. 1983;67:361-370.
- Allison PD. *Multiple Regression: A Primer (Research Methods and Statistics)*. 1st ed. Thousand Oaks, California: Pine Forge Press; 1998:202.
- Trost SG, McIver KL, Pate RR. Conducting accelerometer-based activity assessments in field-based research. *Med Sci Sports Exerc*. 2005;37: S531-S543.
- Bossenbroek L, ten Hacken NHT, van der Bij W, Verschuuren EAM, Koëter GH, de Greef MHG. Cross-sectional assessment of daily physical activity in chronic obstructive pulmonary disease lung transplant patients. *J Heart Lung Transplant*. 2009;28:149-155.
- Woods EC, O'Connor R, Martynenko M, Wolf MS, Wisnivesky JP, Federman AD. Associations between asthma control and airway obstruction and performance of activities of daily living in older adults with asthma. *J Am Geriatr Soc*. 2016;64:1046-1053.
- Westergren T, Ommundsen Y, Lødrup Carlsen KC, et al. A nested case-control study: personal, social and environmental correlates of vigorous physical activity in adolescents with asthma. *J Asthma*. 2015;52:155-161.
- Yiallourous PK, Economou M, Kolokotroni O, et al. Gender differences in objectively assessed physical activity in asthmatic and non-asthmatic children. *Pediatr Pulmonol*. 2015;50:317-326.
- Smith MP, von Berg A, Berdel D, et al. Physical activity is not associated with spirometric indices in lung-healthy German youth. *Eur Respir J*. 2016;48:428-440.



35. Barboza ML, Barbosa ACB, Spina GD, et al. Association between physical activity in daily life and pulmonary function in adult smokers. *J Bras Pneumol*. 2016;42:130-135.
36. Hemmingsson E, Ekelund U. Is the association between physical activity and body mass index obesity dependent? *Int J Obes (Lond)*. 2007;31:663-668.
37. Hills AP, Mokhtar N, Byrne NM. Assessment of physical activity and energy expenditure: an overview of objective measures. *Front Nutr*. 2014;1:5.
38. Light RW, Merrill EJ, Despars JA, Gordon GH, Mutalipassi LR. Prevalence of depression and anxiety in patients with COPD. Relationship to functional capacity. *Chest*. 1985;87:35-38.
39. Weaver TE, Narsavage GL. Physiological and psychological variables related to functional status in chronic obstructive pulmonary disease. *Nurs Res*. 1992;41:286-291.
40. Azevedo Da Silva M, Singh-Manoux A, Brunner EJ, et al. Bidirectional association between physical activity and symptoms of anxiety and depression: the Whitehall II study. *Eur J Epidemiol*. 2012;27:537-546.
41. Brunes A, Augestad LB, Gudmundsdottir SL. Personality, physical activity, and symptoms of anxiety and depression: the HUNT study. *Soc Psychiatry Psychiatr Epidemiol*. 2012;48:1-12.
42. Vermeulen F, Chirumberro A, Rummens P, Bruyneel M, Ninane V. Relationship between the sensation of activity limitation and the results of functional assessment in asthma patients. *J Asthma*. 2016;1-8.
43. Herrmann C. International experiences with the Hospital Anxiety and Depression Scale—a review of validation data and clinical results. *J Psychosom Res*. 1997;42:17-41.
44. Cheng Z, Li R, Dai L, et al. Influencing factors of anxiety and depression in asthmatics. *Zhonghua Yi Xue Za Zhi*. 2014;94:280-283.
45. Di Marco F, Terraneo S, Roggi MA, et al. Physical activity impairment in depressed COPD subjects. *Respir Care*. 2014;59:726-734.
46. Katon WJ, Richardson L, Lozano P, McCauley E. The relationship of asthma and anxiety disorders. *Psychosom Med*. 2004;66:349-355.
47. Lee Y-C, Lee CT-C, Lai Y-R, Chen VC-H, Stewart R. Association of asthma and anxiety: a nationwide population-based study in Taiwan. *J Affect Disord*. 2016;189:98-105.
48. Bruzzese J-M, Reigada LC, Lamm A, et al. Association of youth and caregiver anxiety and asthma care among urban young adolescents. *Acad Pediatr*. 2016;16:792-798.
49. Miller BD. Depression and asthma: a potentially lethal mixture. *J Allergy Clin Immunol*. 1987;80:481-486.
50. Buyantseva LV, Brooks J, Rossi M, Lehman E, Craig TJ. Risk factors associated with 30-day asthma readmissions. *J Asthma*. 2016;53:684-690.
51. Di Marco F, Verga M, Santus P, et al. Close correlation between anxiety, depression, and asthma control. *Respir Med*. 2010;104:22-28.
52. Liu S, Wu R, Li L, et al. The prevalence of anxiety and depression in Chinese asthma patients. *PLoS One*. 2014;9:e103014.
53. Yang Y, Zhao M, Zhang Y, Shen X, Yuan Y. Correlation of 5-HTT, BDNF and NPSR1 gene polymorphisms with anxiety and depression in asthmatic patients. *Int J Mol Med*. 2016;38:65-74.
54. Keil MF, Briassoulis G, Stratakis CA. The role of protein kinase A in anxiety behaviors. *Neuroendocrinology*. 2016;7:1-8.
55. Billen A, Dupont L. Exercise induced bronchoconstriction and sports. *Postgrad Med J*. 2008;84:512-517.
56. Orenstein DM. Exercise tolerance and exercise conditioning in children with chronic lung disease. *J Pediatr*. 1988;112:1043-1047.
57. De Moor MHM, Boomsma DI, Stubbe JH, Willemsen G, de Geus EJC. Testing causality in the association between regular exercise and symptoms of anxiety and depression. *Arch Gen Psychiatry*. 2008;65:897-905.
58. Blumenthal JA, Babyak MA, O'Connor C, et al. Effects of exercise training on depressive symptoms in patients with chronic heart failure: the HF-ACTION randomized trial. *JAMA*. 2012;308:465-474.
59. Chalder M, Wiles NJ, Campbell J, et al. A pragmatic randomised controlled trial to evaluate the cost-effectiveness of a physical activity intervention as a treatment for depression: the treating depression with physical activity (TREAD) trial. *Health Technol Assess*. 2012;16:1-164. iii-iv
60. Renolleau-Courtois D, Lamouroux-Delay A, Delpierre S, et al. Home-based respiratory rehabilitation in adult patients with moderate or severe persistent asthma. *J Asthma*. 2014;51:552-558.
61. Majewski M, Dąbrowska G, Pawik M, Rożek K. Evaluation of a home-based pulmonary rehabilitation program for older females suffering from bronchial asthma. *Adv Clin Exp Med*. 2015;24:1079-1083.

## SUPPORTING INFORMATION

Additional supporting information may be found online in the Supporting Information section at the end of the article.

**How to cite this article:** Hennegrave F, Le Rouzic O, Fry S, Behal H, Chenivresse C, Wallaert B. Factors associated with daily life physical activity in patients with asthma. *Health Sci Rep*. 2018;1:e84. <https://doi.org/10.1002/hsr2.84>