



**HAL**  
open science

## Tardi-magmatic precipitation of Martian Fe/Mg-rich clay minerals via igneous differentiation

J.-C. Viennet, S. Bernard, Corentin Le Guillou, V. Sautter, P. Schmitt-Kopplin, O. Beyssac, S. Pont, B. Zanda, R. Hewins, Laurent Remusat

► **To cite this version:**

J.-C. Viennet, S. Bernard, Corentin Le Guillou, V. Sautter, P. Schmitt-Kopplin, et al.. Tardi-magmatic precipitation of Martian Fe/Mg-rich clay minerals via igneous differentiation. *Geochemical Perspectives Letters*, 2020, pp.47-52. 10.7185/geochemlet.2023 . hal-02927306v2

**HAL Id: hal-02927306**

**<https://hal.univ-lille.fr/hal-02927306v2>**

Submitted on 1 Sep 2020

**HAL** is a multi-disciplinary open access archive for the deposit and dissemination of scientific research documents, whether they are published or not. The documents may come from teaching and research institutions in France or abroad, or from public or private research centers.

L'archive ouverte pluridisciplinaire **HAL**, est destinée au dépôt et à la diffusion de documents scientifiques de niveau recherche, publiés ou non, émanant des établissements d'enseignement et de recherche français ou étrangers, des laboratoires publics ou privés.



Distributed under a Creative Commons Attribution - NonCommercial - NoDerivatives 4.0 International License

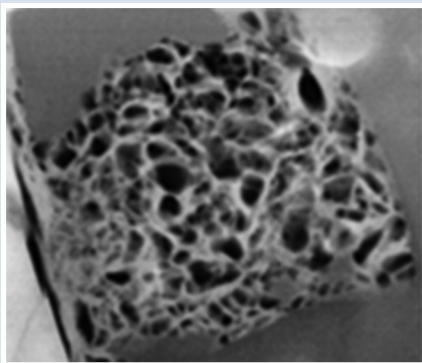
## Tardi-magmatic precipitation of Martian Fe/Mg-rich clay minerals via igneous differentiation

J.-C. Viennet<sup>1\*</sup>, S. Bernard<sup>1</sup>, C. Le Guillou<sup>2</sup>, V. Sautter<sup>1</sup>, P. Schmitt-Kopplin<sup>3</sup>,  
O. Beyssac<sup>1</sup>, S. Pont<sup>1</sup>, B. Zanda<sup>1</sup>, R. Hewins<sup>1</sup>, L. Remusat<sup>1</sup>



doi: 10.7185/geochemlet.2023

### Abstract



Mars is seen as a basalt covered world that has been extensively altered through hydrothermal or near surface water-rock interactions. As a result, all the Fe/Mg-rich clay minerals detected from orbit so far have been interpreted as secondary, *i.e.* as products of aqueous alteration of pre-existing silicates by (sub)surface water. Based on the fine scale petrographic study of the evolved mesostasis of the Nakhla meteorite, we report here the presence of primary Fe/Mg-rich clay minerals that directly precipitated from a water-rich fluid exsolved from the Cl-rich parental melt of nakhrites during igneous differentiation. Such a tardi-magmatic precipitation of clay minerals requires much lower amounts of water compared to production *via* aqueous alteration. Although primary Fe/Mg-rich clay minerals are minor phases in Nakhla, the contribution of such a process to Martian clay formation may have been quite significant during the Noachian given that Noachian magmas were richer in H<sub>2</sub>O. In any case, the present discovery justifies a re-evaluation of the exact origin of the clay minerals detected on Mars so far, with potential consequences for our vision of the early magmatic and climatic histories of Mars.

Received 26 January 2020 | Accepted 27 May 2020 | Published 8 July 2020

### Letter

Recent discoveries have provided direct evidence that chemically evolved rocks formed over short timescales on planetesimals early in the Solar System (Day *et al.*, 2009; Bischoff *et al.*, 2014; Frossard *et al.*, 2019). However, it is unclear if and how much such evolved rocks contributed to the ancient crust of Mars (Sautter *et al.*, 2015, 2016; Udry *et al.*, 2018; Bouley *et al.*, 2020).

Only rare exposures of evolved rocks containing hydrated silica and/or quartz have been reported from orbit (Christensen *et al.*, 2005; Bandfield, 2006; Carter and Poulet, 2013; Wray *et al.*, 2013). In addition to the small depth analysed, that makes dust and coatings dominate the signal, difficulties pertain to the spectral featureless of the main constituents of evolved rocks (*e.g.*, feldspar and quartz), leading to some much discussed ambiguities (Smith and Bandfield, 2012; Ehlmann and Edwards, 2014; Rogers and Nekvasil, 2015). Because of the presence of Fe/Mg-rich clay minerals interpreted as secondary aqueous alteration products (Gooding *et al.*, 1991; Bridges *et al.*, 2001; Carter and Poulet, 2013; Wray *et al.*, 2013; Hicks *et al.*, 2014), the rare evolved rocks detected from orbit have been interpreted as resulting from the hydrothermal alteration or diagenesis of

mafic crustal materials (Smith and Bandfield, 2012; Ehlmann and Edwards, 2014).

Yet, robotic missions evidenced that igneous differentiation induced by fractional crystallisation occurred on Mars (McSween *et al.*, 1999, 2006; Stolper *et al.*, 2013; Sautter *et al.*, 2015, 2016; Udry *et al.*, 2018). The Spirit rover encountered alkaline volcanic rocks, substantially enriched in Na/K-rich plagioclase relative to pyroxene and olivine (McSween *et al.*, 2006), while Curiosity found both fine grained alkali basalts known as mugearites (Stolper *et al.*, 2013) and coarse grained alkali feldspar-bearing lithologies (Sautter *et al.*, 2015, 2016; Udry *et al.*, 2018). Consistently monzonitic clasts have been found in Black Beauty (Humayun *et al.*, 2013; Hewins *et al.*, 2017), while K-feldspar, SiO<sub>2</sub> polymorphs (cristobalite, trypidite and quartz) and even rhyolitic glass have been observed (in addition to apatite and zircon) within nakhrites (Treiman, 2005; Nekvasil *et al.*, 2007; McCubbin *et al.*, 2013; Giesting and Filiberto, 2016).

Here we investigate the paragenesis of the evolved mesostasis of Nakhla, the Martian meteorite eponym for nakhrites. Nakhrites are augite cumulates that differ from each other in the proportion and crystallinity of the mesostasis (Treiman, 2005). They were emplaced ~1.3 Gyr ago as multiple flows, dikes or sills close to the surface (Udry and Day, 2018). The consensus

1. Muséum National d'Histoire Naturelle, Sorbonne Université, CNRS UMR 7590, Institut de Minéralogie, Physique des Matériaux et Cosmochimie, Paris, France  
2. Université Lille, CNRS, INRA, ENSCL, UMR 8207 – UMET – Unité Matériaux et Transformations, 59000 Lille, France  
3. Helmholtz Zentrum München German Research Center for Environmental Health, Research Unit Analytical BioGeoChemistry, Ingolstaedter Landstr. 1, 85764 Neuherberg, Germany  
\* Corresponding author (email: jean.christophe.viennet25@gmail.com)

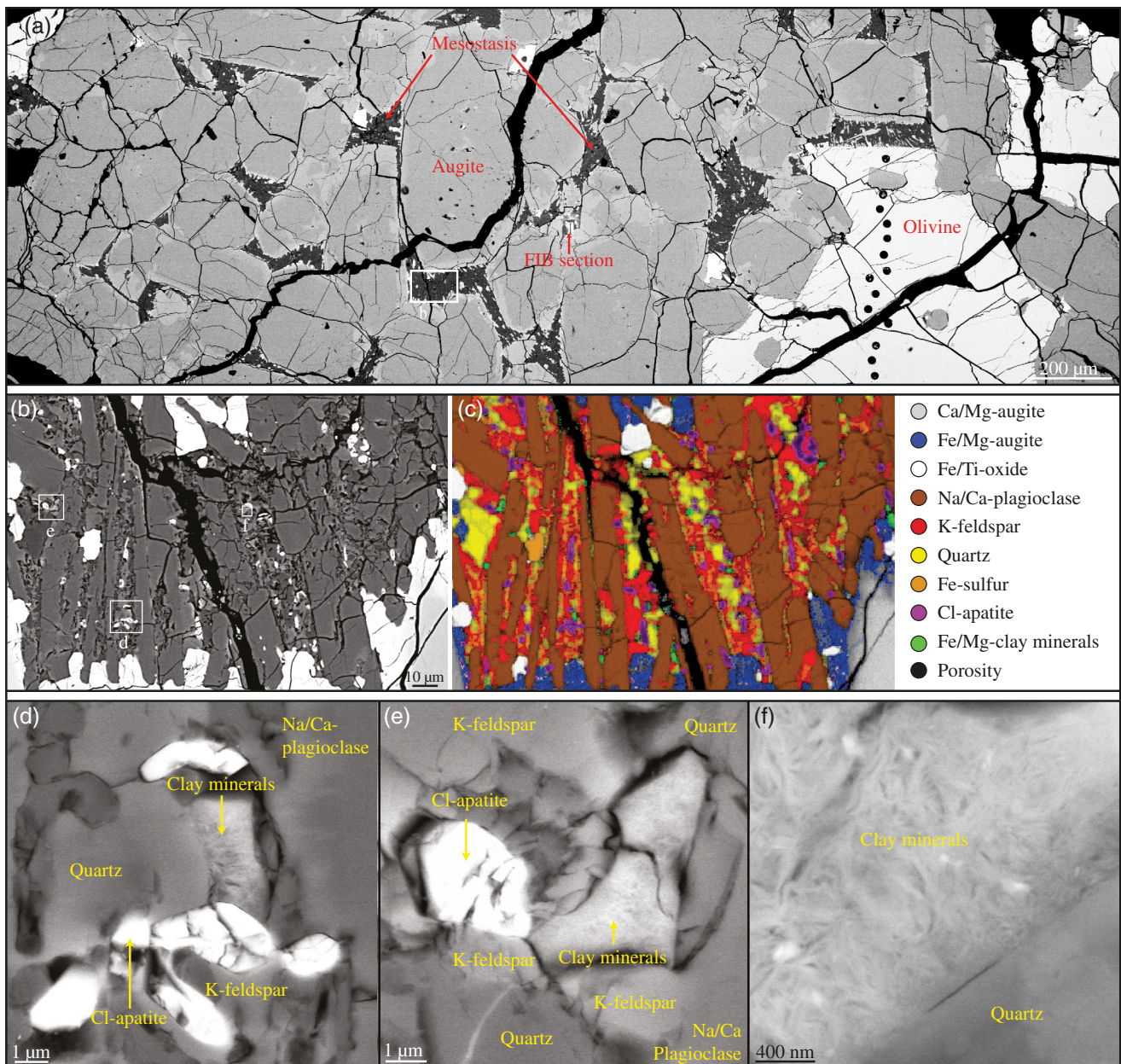


is that nakhlites and chassignites sampled different levels of what may have been a single, large igneous complex (McCubbin *et al.*, 2013), with nakhlites having crystallised from the residual melt having first produced chassignites (Udry and Day, 2018).

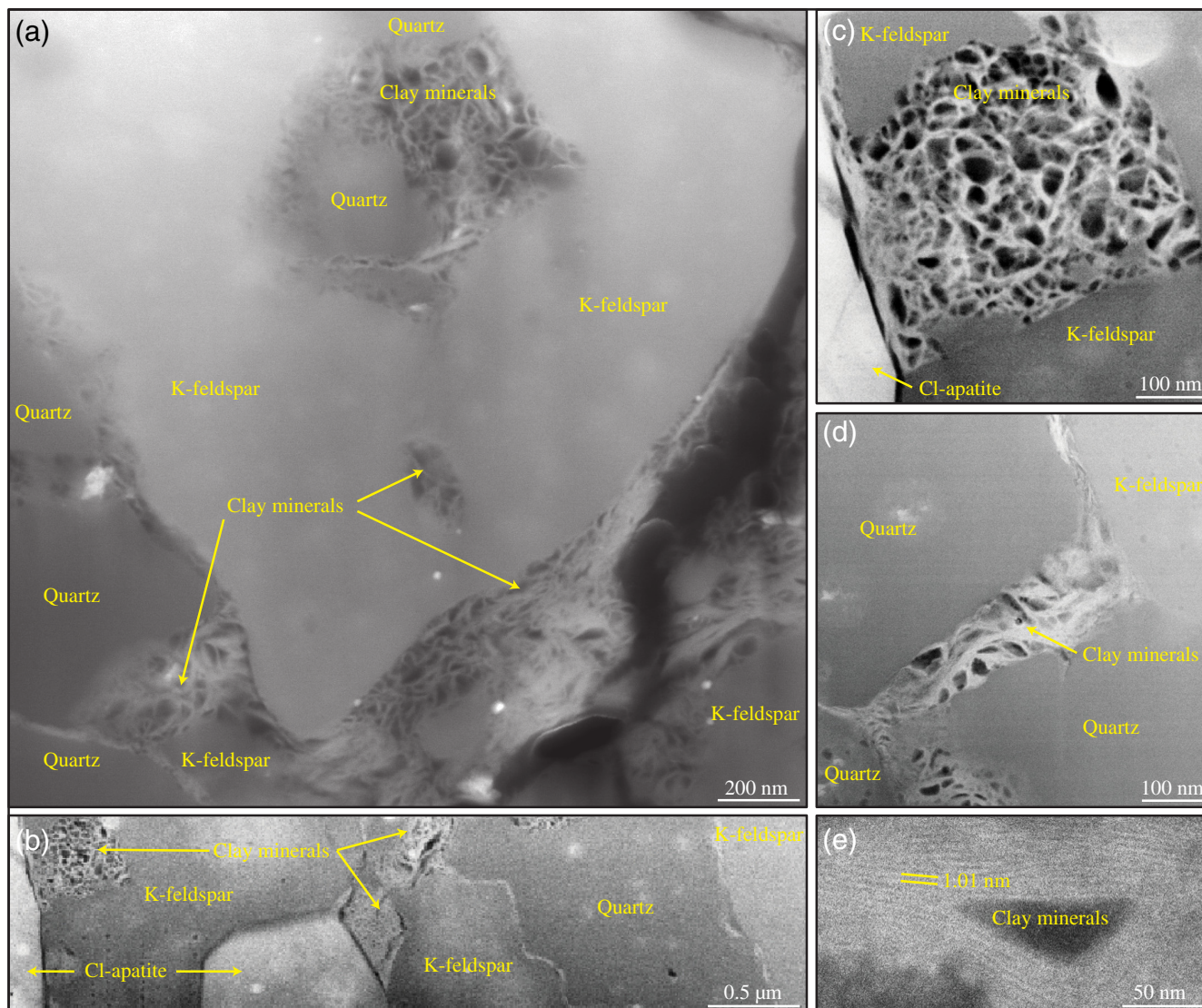
Like the other nakhlites, Nakhla exhibits few olivine grains and numerous large crystals of augite that are set in a crystalline mesostasis (Fig. 1). All augite crystals in contact with the mesostasis are zoned, from Mg-rich cores to Fe-rich rims. The mesostasis is mainly composed of Na/Ca-plagioclase laths and euhedral titanomagnetite (Fig. 1). In between the Na/Ca-plagioclase laths, the mesostasis exhibits a vermicular texture consisting of nanoscale Cl-apatite and Fe-sulfides together with quartz, K-feldspar and Fe/Mg-rich clay minerals (Figs. 1, 2). In contrast to iddingsite veins crosscutting olivine in nakhlites (Gooding *et al.*, 1991), these Fe/Mg-rich clay minerals display

a high porosity and can be found as masses in contact with or within Na/Ca-plagioclase, Cl-apatite, K-feldspar or quartz (Figs. 1, 2). The clay minerals are made of ~40 to 100 nm wide lamellar materials, with stacking height ranging from ~10 to 20 nm and a d-spacing of ~10 Å (Fig. 2). Their mean structural formula,  $(K_{0.22}Na_{0.30}Ca_{0.07}(Mg_{0.93}Fe_{0.58}Mn_{0.05}Ti_{0.02}\square_{0.42})(Fe_{0.93}Al_{0.21}Si_{2.86})(O_{10})[(OH_2O)_{1.86}Cl_{0.14}])$  according to STEM-EDS analyses, falls within the domain of interstratified or mixtures of Cl-rich saponite and celadonite (Meunier *et al.*, 2008; Meunier, 2010).

The inclusions of Fe/Mg-rich clay minerals within K-feldspar grains (Fig. 2) and the absence of chlorite and/or Al-rich layers are inconsistent with aqueous alteration processes of K-feldspars (Meunier, 2010; Beaufort *et al.*, 2015). None of the Cl-apatite, K-feldspar and quartz grains composing the mesostasis of Nakhla display any alteration texture such as retreating



**Figure 1** SEM images of the investigated thin section of Nakhla in BSE mode. (a) BSE image of the augite cumulate texture of Nakhla. (b,c) BSE image of the Nakhla mesostasis (b) and corresponding EDXS-based mineralogical map (c). (d-f) BSE images of the tardi-magmatic Fe/Mg-rich clay minerals observed in the mesostasis of Nakhla in contact with Na/Ca-plagioclase, K-feldspar, quartz and Cl-apatite.



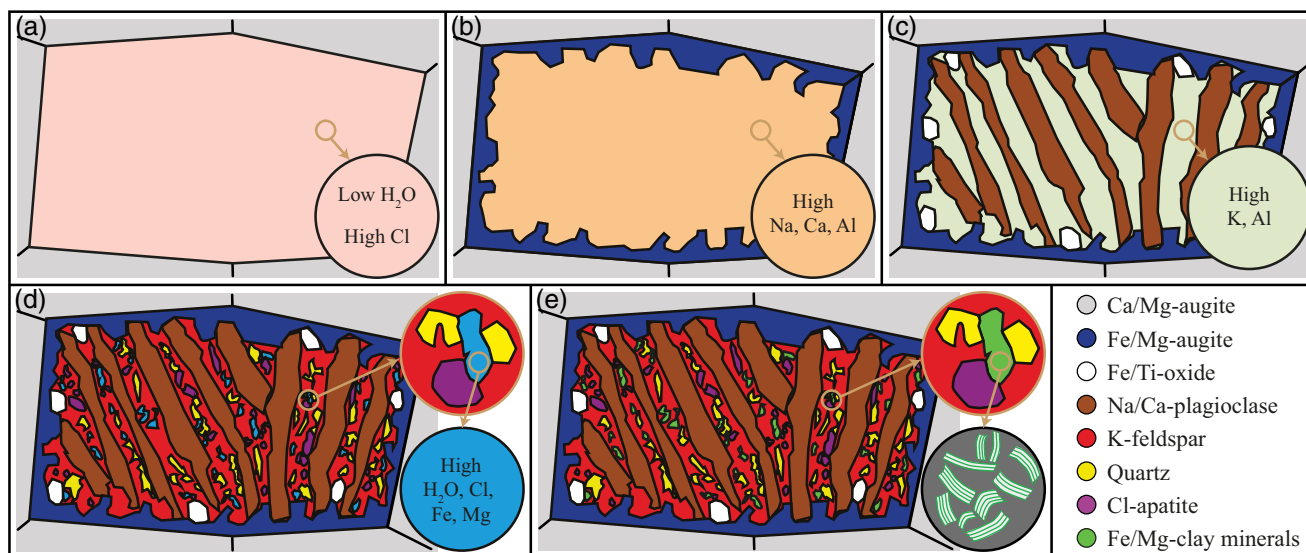
**Figure 2** TEM images of the FIB sections extracted from the mesostasis of Nakhla in STEM mode. (a–e). Images of the magmatic Fe/Mg-rich clay minerals minerals observed in the mesostasis of Nakhla in contact with K-feldspar, quartz, Cl-apatite and in inclusions within K-feldspar.

surfaces or pitch-like material resulting from dissolution. In contrast, all these phases exhibit sharp boundaries, even when in contact with the Fe/Mg-rich clay minerals. A halogen content as high as that of these Fe/Mg-rich clay minerals has never been reported for secondary clay minerals (Bailey, 1984). The high chlorine content of the Fe/Mg-rich clay minerals observed in Nakhla is more consistent with a precipitation from a Cl-rich, magma derived fluid (Bailey, 1984), as is the case for the other Cl-rich minerals previously reported in nakhlites, such as apatite, scapolite and amphibole (Filiberto and Treiman, 2009a; McCubbin *et al.*, 2013; Filiberto *et al.*, 2014; Giesting and Filiberto, 2016). In other words, the Fe/Mg-rich clay minerals observed in Nakhla were not produced by aqueous alteration, but rather have a tardi-magmatic origin. Tardi-magmatic precipitation of smectite and celadonite similar to that observed here in Nakhla has been previously reported in terrestrial rocks (Meunier *et al.*, 2008, 2012; Meunier, 2010; Berger *et al.*, 2014, 2018).

Petrographic investigations reveal that the tardi-magmatic Fe/Mg-rich clay minerals observed in Nakhla precipitated at the end of the cooling sequence from a residual water-rich, magma derived, Cl-rich fluid (Fig. 3). According to

previous studies, the parental melt of Nakhla results from a mixture of different magmas with a Cl-rich fluid of some kind (McCubbin *et al.*, 2013; Giesting and Filiberto, 2016). The crystallisation of Mg-rich augite cores followed by the overgrowth of Fe-rich rims increased the relative concentrations of Na, Ca and Al in the trapped, residual, evolved melt. Laths of Na/Ca-plagioclase then nucleated together with euhedral titanomagnetite at the surface of the augite grains, before the crystallisation of K-feldspar, quartz and Cl-apatite in between the laths of Na/Ca-plagioclase (Fig. 3). Finally, the observed Fe/Mg-rich clay minerals directly precipitated from the leaving residual water-rich, magma derived, Cl-rich fluid (Fig. 3). The differences in porosity between different pockets of clay minerals might result from the cooling history of the lava flow and/or the variable gas content of the residual water-rich, magma derived, Cl-rich fluids from which the clay minerals precipitated.

The precipitation of Fe/Mg-rich clay minerals after that of quartz might be due the low H<sub>2</sub>O content of the parental melt of nakhlites (Weis *et al.*, 2017; Filiberto *et al.*, 2019). In fact, early experimental studies demonstrated that H<sub>2</sub>O-poor melts produce feldspar and quartz before phyllosilicates (Naney, 1983). Of note, despite the low H<sub>2</sub>O content of the parental melt of



**Figure 3** Sketch summarising the crystallisation sequence of the mesostasis of Nakhla. (a) Crystallisation of augite and entrapment of a fraction of the residual melt. (b) Crystallisation of Fe-rich rims of augite. (c) Crystallisation of Na/Ca-plagioclase and Fe/Ti-oxides. (d) Crystallisation of K-feldspars, Cl-apatite and quartz. (e) Precipitation of Cl-rich Fe/Mg-clay minerals.

nakhlites (e.g., <100 ppm; Weis *et al.*, 2017 and Filiberto *et al.*, 2019), the final mineral assemblage observed here (*i.e.* Cl apatite, K feldspar, quartz and Fe/Mg-rich clay minerals) is typical of evolved/granitic rocks, even though it has long been argued that a significant H<sub>2</sub>O content is required to produce such rocks (Campbell and Taylor, 1983). This apparent paradox can be explained by the high Cl content of the parental melt of nakhlites. In fact, the presence of Cl in a magma affects its liquidus temperature and increases pyroxene stability to lower pressures as does H<sub>2</sub>O, permitting the residual melt to evolve to lower temperatures before solidification (Filiberto and Treiman, 2009a,b), eventually leading to alkali-rich/felsic compositions like those obtained from H<sub>2</sub>O-rich melts (Nekvasil *et al.*, 2004; Whitaker *et al.*, 2008).

Altogether, the results of the present study portend that some the Fe/Mg-rich clay minerals detected on Mars so far may not be the products of the aqueous alteration of pre-existing silicates by (sub)surface water but rather tardi-magmatic clays minerals, as anticipated earlier (Meunier *et al.*, 2012; Berger *et al.*, 2014, 2018). Similarly, some of the evolved units detected from orbit and containing Fe/Mg-rich clay minerals (Christensen *et al.*, 2005; Bandfield, 2006; Carter and Poulet, 2013; Wray *et al.*, 2013) may not be mafic rocks having undergone aqueous alteration processes but rather evolved/granitic materials containing primary Fe/Mg clay minerals that formed *via* igneous differentiation. Given that Noachian magmas were richer in H<sub>2</sub>O (Médard and Grove, 2006; Filiberto *et al.*, 2019), both igneous differentiation and tardi-magmatic production of clay minerals may have been quite significant during the Noachian. Determining the exact contribution of these processes during the Noachian could potentially resolve the origin of the Martian dichotomy (Watters *et al.*, 2007) and explain both the missing salt paradox (Milliken *et al.*, 2009) and the amorphous conundrum (Tosca and Knoll, 2009).

## Acknowledgements

We gratefully acknowledge financial support from the ANR (project RAHIIA\_SSOM – Local PI: LR). We thank Elisabeth Malassis for administrative support, Imène Esteve (IMPIC)

for support with the SEM, David Troadec (IEMN) for the preparation of FIB sections. The SEM facility at IMPIC is supported by Region Ile de France grant SESAME Number I-07-593/R, INSU-CNRS, INP-CNRS and UPMC-Paris 6, and by the Agence Nationale de la Recherche (ANR) grant number ANR-07-BLAN-0124-01. The TEM facility at the CCM (Lille University) is supported by the Chevreul Institute, the European FEDER and Région Nord-Pas-de-Calais. The authors wish to acknowledge the Editor Pr. Maud Boyet, as well as two anonymous reviewers, for their constructive comments that greatly improved the quality of this work.

Editor: Maud Boyet

## Author Contributions

JCV and SB designed the present study, with critical inputs from CLG and VS. JCV and SB performed the SEM analyses. JCV, SB and CLG performed the TEM analyses. JCV and CLG processed the EXDS data. All authors contributed to the interpretation of the data and discussed their implications. JCV and SB wrote the manuscript, with critical inputs from all authors.

## Additional Information

Supplementary Information accompanies this letter at <http://www.geochemicalperspectivesletters.org/article2023>.



© 2020 The Authors. This work is distributed under the Creative Commons Attribution Non-Commercial No-Derivatives 4.0

License, which permits unrestricted distribution provided the original author and source are credited. The material may not be adapted (remixed, transformed or built upon) or used for commercial purposes without written permission from the author. Additional information is available at <http://www.geochemicalperspectivesletters.org/copyright-and-permissions>.

**Cite this letter as:** Viennet, J.-C., Bernard, S., Le Guillou, C., Sautter, V., Schmitt-Kopplin, P., Beysac, O., Pont, S.,

Zanda, B., Hewins, R., Remusat, L. (2020) Tardi-magmatic precipitation of Martian Fe/Mg-rich clay minerals via igneous differentiation. *Geochem. Persp. Let.* 14, 47–52.

## References

- BAILEY, S.W. (1984) *Micas. Reviews in Mineralogy* 13, Mineralogical Society of America, Washington, USA.
- BANDFIELD, J.L. (2006) Extended surface exposures of granitoid compositions in Syrtis Major, Mars. *Geophysical Research Letters* 33, L06203.
- BEAUFORT, D., RIGAUT, C., BILLON, S., BILLAULT, V., INOUE, A., INOUE, S., PATRIER, P. (2015) Chlorite and chloritization processes through mixed-layer mineral series in low-temperature geological systems – a review. *Clay Minerals* 50, 497–523.
- BERGER, G., MEUNIER, A., BEAUFORT, D. (2014) Clay mineral formation on Mars: Chemical constraints and possible contribution of basalt out-gassing. *Planetary Geology Field Symposium, Kitakyushu, Japan, 2011: Planetary Geology and Terrestrial Analogs* 95, 25–32.
- BERGER, G., BEAUFORT, D., ANTOINE, R. (2018) Clay minerals related to the late magmatic activity of the Piton des Neiges (Réunion Island): consequence for the primitive crusts. *Clay Minerals* 53, 675–690.
- BISCHOFF, A., HORSTMANN, M., BARRAT, J.-A., CHAUSSIDON, M., PACK, A., HERWARTZ, D., WARD, D., VOLLMER, C., DECKER, S. (2014) Trachyandesitic volcanism in the early Solar System. *Proceedings of the National Academy of Sciences* 111, 12689.
- BOULEY, S., KEANE, J.T., BARATOUX, D., LANGLAIS, B., MATSUYAMA, I., COSTARD, F., HEWINS, R., PAYRÉ, V., SAUTTER, V., SÉJOURNÉ, A. *et al.* (2020) A thick crustal block revealed by reconstructions of early Mars highlands. *Nature Geoscience* 13, 105–109.
- BRIDGES, J.C., CATLING, D.C., SAXTON, J.M., SWINDLE, T.D., LYON, I.C., GRADY, M.M. (2001) Alteration Assemblages in Martian Meteorites: Implications for Near-Surface Processes. *Space Science Reviews* 96, 365–392.
- CAMPBELL, I.H., TAYLOR, S.R. (1983) No water, no granites – No oceans, no continents. *Geophysical Research Letters* 10, 1061–1064.
- CARTER, J., POULET, F. (2013) Ancient plutonic processes on Mars inferred from the detection of possible anorthositic terrains. *Nature Geoscience* 6, 1008.
- CHRISTENSEN, P.R., MCSWEENEY, H.Y., BANDFIELD, J.L., RUFF, S.W., ROGERS, A.D., HAMILTON, V.E., GORELICK, N., WYAIT, M.B., JAKOSKY, B.M., KIEFFER, H.H., MALIN, M.C., MOERSCH, J.E. (2005) Evidence for magmatic evolution and diversity on Mars from infrared observations. *Nature* 436, 504–509.
- DAY, J.M.D., ASH, R.D., LIU, Y., BELLUCCI, J.J., III, D.R., McDONOUGH, W.F., WALKER, R.J., TAYLOR, L.A. (2009) Early formation of evolved asteroidal crust. *Nature* 457, 179–182.
- EHLMANN, B.L., EDWARDS, C.S. (2014) Mineralogy of the Martian Surface. *Annual Review of Earth and Planetary Sciences* 42, 291–315.
- FILIBERTO, J., MCCUBBIN, F.M., TAYLOR, G.J. (2019) Chapter 2 – Volatiles in Martian Magmas and the Interior: Inputs of Volatiles Into the Crust and Atmosphere. In: FILIBERTO, J., SCHWENZER, S.P. (Eds.) *Volatiles in the Martian Crust*, 13–33. Elsevier, Amsterdam, Netherlands.
- FILIBERTO, J., TREIMAN, A.H. (2009a) Martian magmas contained abundant chlorine, but little water. *Geology* 37, 1087–1090.
- FILIBERTO, J., TREIMAN, A.H. (2009b) The effect of chlorine on the liquidus of basalt: First results and implications for basalt genesis on Mars and Earth. *Chemical Geology* 263, 60–68.
- FILIBERTO, J., TREIMAN, A.H., GIESTING, P.A., GOODRICH, C.A., GROSS, J. (2014) High-temperature chlorine-rich fluid in the martian crust: A precursor to habitability. *Earth and Planetary Science Letters* 401, 110–115.
- FROSSARD, P., BOYET, M., BOUVIER, A., HAMMOUDA, T., MONTEUX, J. (2019) Evidence for anorthositic crust formed on an inner solar system planetesimal. *Geochemical Perspectives Letters* 11, 28–32.
- GIESTING, P.A., FILIBERTO, J. (2016) The formation environment of potassic-chlorohastingsite in the nakhlites MIL 03346 and pairs and NWA 5790: Insights from terrestrial chloro-amphibole. *Meteoritics & Planetary Science* 51, 2127–2153.
- GOODING, J.L., WENTWORTH, S.J., ZOLENSKY, M.E. (1991) Aqueous alteration of the Nakhla meteorite. *Meteoritics* 26, 135–143.
- HEWINS, R.H., ZANDA, B., HUMAYUN, M., NEMCHIN, A., LORAND, J.-P., PONT, S., DELDICQUE, D., BELLUCCI, J.J., BECK, P., LEROUX, H., MARINOVA, M., REMUSAT, L., GÖPEL, C., LEWIN, E., GRANGE, M., KENNEDY, A., WHITEHOUSE, M.J. (2017) Regolith breccia Northwest Africa 7533: Mineralogy and petrology with implications for early Mars. *Meteoritics & Planetary Science* 52, 89–124.
- HICKS, L.J., BRIDGES, J.C., GURMAN, S.J. (2014) Ferric saponite and serpentine in the nakhlite martian meteorites. *Geochimica et Cosmochimica Acta* 136, 194–210.
- HUMAYUN, M., NEMCHIN, A., ZANDA, B., HEWINS, R.H., GRANGE, M., KENNEDY, A., LORAND, J.-P., GÖPEL, C., FIENI, C., PONT, S., DELDICQUE, D. (2013) Origin and age of the earliest Martian crust from meteorite NWA 7533. *Nature* 503, 513–516.
- MCCUBBIN, F.M., ELARDO, S.M., SHEARER, C.K., SMIRNOV, A., HAURI, E.H., DRAPER, D.S. (2013) A petrogenetic model for the comagmatic origin of chassignites and nakhlites: Inferences from chlorine-rich minerals, petrology, and geochemistry. *Meteoritics & Planetary Science* 48, 819–853.
- MCSWEENEY, H.Y., MURCHIE, S.L., CRISP, J.A., BRIDGES, N.T., ANDERSON, R.C., BELL III, J.F., BRITT, D.T., BRÜCKNER, J., DREIBUS, G., ECONOMOU, T., GHOSH, A., GOLOMBEK, M.P., GREENWOOD, J.P., JOHNSON, J.R., MOORE, H.J., MORRIS, R.V., PARKER, T.J., RIEDER, R., SINGER, R., WÄNKE, H. (1999) Chemical, multispectral, and textural constraints on the composition and origin of rocks at the Mars Pathfinder landing site. *Journal of Geophysical Research: Planets* 104, 8679–8715.
- MCSWEENEY, H.Y., RUFF, S.W., MORRIS, R.V., BELL III, J.F., HERKENHOF, K., GELLERT, R., STOCKSTILL, K.R., TORNABENE, L.L., SQUYRES, S.W., CRISP, J.A., CHRISTENSEN, P.R., MCCOY, T.J., MITTFLEHLDT, D.W., SCHMIDT, M. (2006) Alkaline volcanic rocks from the Columbia Hills, Gusev crater, Mars. *Journal of Geophysical Research: Planets* 111.
- MÉDARD, E., GROVE, T.L. (2006) Early hydrous melting and degassing of the Martian interior. *Journal of Geophysical Research: Planets* 111, E11003.
- MEUNIER, A. (2010) *Clays*. Springer-Verlag, Berlin, Heidelberg, New York.
- MEUNIER, A., MAS, A., BEAUFORT, D., PATRIER, P., DUDOIGNON, P. (2008) Clay minerals in basalt-hawaiite rocks from Mururoa Atoll (French Polynesia). II. Petrography and geochemistry. *Clays and Clay Minerals* 56, 730–750.
- MEUNIER, A., PETIT, S., EHLMANN, B.L., DUDOIGNON, P., WESTALL, F., MAS, A., EL ALBANI, A., FERRAGE, E. (2012) Magmatic precipitation as a possible origin of Noachian clays on Mars. *Nature Geoscience* 5, 739.
- MILLIKEN, R.E., FISCHER, W.W., HUROWITZ, J.A. (2009) Missing salts on early Mars. *Geophysical Research Letters* 36, L11202.
- NANEY, M.T. (1983) Phase equilibria of rock-forming ferromagnesian silicates in granitic systems. *American Journal of Science* 283, 993–1033.
- NEKVASIL, H., DONDOLINI, A., HORN, J., FILIBERTO, J., LONG, H., LINDSLEY, D.H. (2004) The Origin and Evolution of Silica-saturated Alkalic Suites: an Experimental Study. *Journal of Petrology* 45, 693–721.
- NEKVASIL, H., FILIBERTO, J., MCCUBBIN, F.M., LINDSLEY, D.H. (2007) Alkalic parental magmas for chassignites? *Meteoritics & Planetary Science* 42, 979–992.
- ROGERS, A.D., NEKVASIL, H. (2015) Feldspathic rocks on Mars: Compositional constraints from infrared spectroscopy and possible formation mechanisms. *Geophysical Research Letters* 42, 2619–2626.
- SAUTTER, V., TOPLIS, M.J., WIENS, R.C., COUSIN, A., FABRE, C., GASNAULT, O., MAURICE, S., FORNI, O., LASUE, J., OLLILA, A., BRIDGES, J.C., MANGOLD, N., LE MOUÉLIC, S., FISK, M., MESLIN, P.-Y., BECK, P., PINET, P., LE DEIT, L., RAPIN, W., STOLPER, E.M., NEWSOM, H., DYAR, D., LANZA, N., VANIMAN, D., CLEGG, S., WRAY, J.J. (2015) In situ evidence for continental crust on early Mars. *Nature Geoscience* 8, 605.
- SAUTTER, V., TOPLIS, M.J., BECK, P., MANGOLD, N., WIENS, R., PINET, P., COUSIN, A., MAURICE, S., LEDEIT, L., HEWINS, R., GASNAULT, O., QUANTIN, C., FORNI, O., NEWSOM, H., MESLIN, P.-Y., WRAY, J., BRIDGES, N., PAYRE, V., RAPIN, W., LE MOUÉLIC, S. (2016) Magmatic complexity on early Mars as seen through a combination of orbital, in-situ and meteorite data. *Lithos* 254, 36–52.
- SMITH, M.R., BANDFIELD, J.L. (2012) Geology of quartz and hydrated silica-bearing deposits near Antoniadi Crater, Mars. *Journal of Geophysical Research: Planets* 117, E06007.
- STOLPER, E.M., BAKER, M.B., NEWCOMBE, M.E., SCHMIDT, M.E., TREIMAN, A.H., COUSIN, A., DYAR, M.D., FISK, M.R., GELLERT, R., KING, P.L., LESHIN, L., MAURICE, S., MCLENNAN, S.M., MINITTI, M.E., PERRETT, G., ROWLAND, S., SAUTTER, V., WIENS, R.C. (2013) The Petrochemistry of Jake\_M: A Martian Mugarite. *Science* 341, 1239463.
- TOSCA, N.J., KNOLL, A.H. (2009) Juvenile chemical sediments and the long term persistence of water at the surface of Mars. *Earth and Planetary Science Letters* 286, 379–386.
- TREIMAN, A.H. (2005) The nakhlite meteorites: Augite-rich igneous rocks from Mars. *Geochemistry* 65, 203–270.
- UDRY, A., DAY, J.M.D. (2018) 1.34 billion-year-old magmatism on Mars evaluated from the co-genetic nakhlite and chassignite meteorites. *Geochimica et Cosmochimica Acta* 238, 292–315.



- UDRY, A., GAZEL, E., MCSWEEN JR., H.Y. (2018) Formation of Evolved Rocks at Gale Crater by Crystal Fractionation and Implications for Mars Crustal Composition. *Journal of Geophysical Research: Planets* 123, 1525–1540.
- WATTERS, T.R., MCGOVERN, P.J., IRWIN III, R.P. (2007) Hemispheres Apart: The Crustal Dichotomy on Mars. *Annual Review of Earth and Planetary Sciences* 35, 621–652.
- WEIS, F.A., BELLUCCI, J.J., SKOGBY, H., STALDER, R., NEMCHIN, A.A., WHITEHOUSE, M.J. (2017) Water content in the Martian mantle: A Nakhla perspective. *Geochimica et Cosmochimica Acta* 212, 84–98.
- WHITAKER, M.L., NEKVASIL, H., LINDSLEY, D.H., MCCURRY, M. (2008) Can crystallization of olivine tholeiite give rise to potassic rhyolites?—an experimental investigation. *Bulletin of Volcanology* 70, 417–434.
- WRAY, J.J., HANSEN, S.T., DUFEK, J., SWAYZE, G.A., MURCHIE, S.L., SEELOS, F.P., SKOK, J.R., IRWIN III, R.P., GHIORSO, M.S. (2013) Prolonged magmatic activity on Mars inferred from the detection of felsic rocks. *Nature Geoscience* 6, 1013.



## ■ Magmatic crystallisation of Martian Fe/Mg-rich clay minerals via igneous differentiation

J.-C. Viennet, S. Bernard, C. Le Guillou, V. Sautter, P. Schmitt-Kopplin, O. Beyssac, S. Pont, B. Zanda, R. Hewins, L. Remusat

### ■ Supplementary Information

The Supplementary Information includes:

- Materials and Methods
- Supplementary Information References

### ***Materials and Methods***

#### **SEM & TEM**

Scanning electron microscopy (SEM) and EDXS mapping was performed on a thin section of Nakhla using a SEM-FEG Ultra 55 Zeiss (IMPMS - Paris, France) microscope operating at a 15-kV accelerating voltage and a working distance of 7.5 mm for imaging with backscattered electrons and EDXS mapping. Transmission electron microscopy in scanning mode (STEM) was performed on FIB foils using a Thermofisher Titan Themis 300 microscope operated at 300 keV (CCM – Lille, France). TEM-based hyperspectral EDXS data were obtained using the super-X detector system equipped with four windowless silicon drift detectors with a high sensitivity for light elements. The probe current was set at maximum 200 pA with a dwell time at 10  $\mu$ s per pixel.

#### **FIB**

Focused ion beam (FIB) ultrathin sections were extracted from the mesostasis of Nakhla using an FEI Strata DB 235 (IEMN, Lille, France). Milling at low Ga-ion currents minimises common artefacts including: local gallium implantation, mixing of components, creation of vacancies or interstitials, creation of amorphous layers, local compositional changes or redeposition of the sputtered material on the sample surface (Wirth, 2009).

#### **EDXS data processing**

A key aspect of this work is the post-processing of the collected EDXS hyperspectral data, performed using the Hyperspy python-based package (De La Pena *et al.*, 2017). The signal was first denoised using PCA and then fitted by a series of Gaussian functions and a physical model for background/bremsstrahlung. The integrated intensities of the Gaussian functions were used to quantify the compositions of the clay minerals thanks to the Cliff-Lorimer method, using experimentally determined k-factors. Absorption





correction was taken into account, which is mandatory to correct for the re-absorption within the sample of oxygen X-rays. These steps correct for the thickness of the sample. Finally, end-member phases were identified and their spectra used as inputs for linear combination fitting (multiple linear least square fits). Pixels of similar composition were given the same colors scaled as a function of the proportion of each phase.

### ***Supplementary Information References***

- De La Pena, F., Ostasevicius, T., Tonaas Fauske, V., Burdet, P., Jokubauskas, P., Nord, M., Sarahan, M., Prestat, E., Johnstone, D.N., Taillon, J. *et al.* (2017) Electron Microscopy (Big and Small) Data Analysis With the Open Source Software Package HyperSpy. *Microscopy and Microanalysis* 23, 214–215.
- Wirth, R. (2009) Focused Ion Beam (FIB) combined with SEM and TEM: Advanced analytical tools for studies of chemical composition, microstructure and crystal structure in geomaterials on a nanometre scale. *Chemical Geology* 261, 217–229.

