



HAL
open science

STEM-EELS Investigation of Planar Defects in Olivine in the Allende Meteorite

Maya Marinova, Hugues Leroux, Priscille Cuvillier, Alexandre Gloter, Damien
Jacob

► **To cite this version:**

Maya Marinova, Hugues Leroux, Priscille Cuvillier, Alexandre Gloter, Damien Jacob. STEM-EELS Investigation of Planar Defects in Olivine in the Allende Meteorite. *Minerals*, 2021, Advances in Applying Electron Microscopy in Studying the Microstructure of Minerals, 11 (1), pp.35. 10.3390/min11010035 . hal-03133000

HAL Id: hal-03133000

<https://hal.univ-lille.fr/hal-03133000v1>

Submitted on 5 Feb 2021

HAL is a multi-disciplinary open access archive for the deposit and dissemination of scientific research documents, whether they are published or not. The documents may come from teaching and research institutions in France or abroad, or from public or private research centers.

L'archive ouverte pluridisciplinaire **HAL**, est destinée au dépôt et à la diffusion de documents scientifiques de niveau recherche, publiés ou non, émanant des établissements d'enseignement et de recherche français ou étrangers, des laboratoires publics ou privés.



Distributed under a Creative Commons Attribution 4.0 International License

Communication

STEM-EELS Investigation of Planar Defects in Olivine in the Allende Meteorite

Maya Marinova ^{1,*}, Hugues Leroux ^{2,*}, Priscille Cuvillier ^{2,†}, Alexandre Gloter ³  and Damien Jacob ² 

¹ Univ. Lille, CNRS, INRAE, Centrale Lille, Univ. Artois, FR 2638-IMEC-Institut Michel-Eugène Chevreul, F-59000 Lille, France

² Univ. Lille, CNRS, INRAE, Centrale Lille, UMR 8207-UMET-Unité Matériaux et Transformations, F-59000 Lille, France; priscille.cuvillier@edf.fr (P.C.); damien.jacob@univ-lille.fr (D.J.)

³ Université Paris-Saclay, CNRS UMR 8502, Laboratoire de Physique des Solides (LPS), 91405 Orsay, France; alexandre.gloter@universite-paris-saclay.fr

* Correspondence: maya.marinova@univ-lille.fr (M.M.); hugues.leroux@univ-lille.fr (H.L.)

† Present affiliation: EDF-Industrial Direction, NPP of Chinon-BP23, 37420 Avoine, France.

Abstract: The present study focuses on a detailed structural investigation at atomic scale of the planar defects that appear in the olivine grains in the Allende meteorite, and it aims to clarify their nature and the related formation mechanism. The investigation was performed using advanced spectro-microscopy techniques such as atomically resolved high-angle annular dark field (HAADF) images coupled with electron energy loss spectroscopy in the scanning transmission electron microscopy mode (STEM-EELS). Two prominent structural features appear in the investigated olivine grains: (i) Exsolution platelets with a thickness between 2 and 10 nm with the spinel structure and chemical composition expressed as a solid solution between magnetite, chromite, and $MgAl_2O_4$. (ii) Thinner planar defects appeared with thickness between 2 to 4 atomic planes, which were rich in Fe and had a strong Fe^{3+} contribution. The structure of these defects was described by the crystalline lattice of the olivine grains with small distortion of the measured cationic distances, which can be related to Fe^{3+} -Si substitution in the tetrahedral sites. Those metastable defects should have preceded the formation of the thicker spinel exsolutions and could have formed during an oxidizing event in the Allende parent body.

Keywords: STEM-EELS; HAADF; olivine; Allende; planar defects



Citation: Marinova, M.; Leroux, H.; Cuvillier, P.; Gloter, A.; Jacob, D. STEM-EELS Investigation of Planar Defects in Olivine in the Allende Meteorite. *Minerals* **2021**, *11*, 35. <https://doi.org/10.3390/min11010035>

Received: 4 December 2020

Accepted: 22 December 2020

Published: 30 December 2020

Publisher's Note: MDPI stays neutral with regard to jurisdictional claims in published maps and institutional affiliations.



Copyright: © 2020 by the authors. Licensee MDPI, Basel, Switzerland. This article is an open access article distributed under the terms and conditions of the Creative Commons Attribution (CC BY) license (<https://creativecommons.org/licenses/by/4.0/>).

1. Introduction

The CV type chondrites are carbonaceous chondrites, which have experienced some level of aqueous alteration and thermal metamorphism during their history. They contain large-sized chondrules and refractory inclusions, cemented by a fine-grained matrix dominated by anhydrous silicates. The dominant phase of this matrix is a FeO-rich olivine (typically between Fa_{50} and Fa_{60} , corresponding to a composition range $Fe_{1.0-1.2}Mg_{1.0-0.8}SiO_4$), whose origin has been the subject of debates. The proposed scenarios, which are still under discussion, include a formation in a nebular environment before accretion [1,2] or secondary processes on the parent body [3,4].

The olivine grains in the matrices of CV chondrites are typically micron-sized with frequent elongated shapes, described as platy, tubular, or lath-shaped crystals [1,4,5]. The elongated grains have their short axis along the a crystallographic direction (with the olivine $Pbnm$ space group), leading to an alignment fabric of the matrix during lithification [5,6]. Transmission electron microscopy (TEM) studies showed that the olivine grains contain numerous nanometer-sized voids and inclusions [7–9], mainly composed of hercynitic spinel, carbonaceous matter and sulfides. Moreover, several studies carried out by TEM have shown that the olivine grains of CV chondrites frequently contain planar defects parallel to either (100) or (001) planes [8,10–14].

The crystalline defects contained in olivine are certainly useful for better understanding the olivine formation itself as well as the thermal or mechanical events underwent after their formation, during or after the parent body metamorphic episode. This information is valuable for contributing to a better understanding of the physical and chemical conditions that prevailed on the parent body of CV-chondrite. The results reported here are focused on the study of planar defects which are present in abundance in the olivine of CV chondrites, whereas they are rather unusual in other asteroidal contexts. To characterize these defects at the atomic scale, olivine grains extracted from the matrix of the Allende CV chondrite were studied using high-resolution scanning transmission electron microscopy (STEM) imaging and electron energy loss spectroscopy (EELS). We then propose a mechanism of formation of these defects and discuss their significance in a context of the metamorphic stage of the chondrite parent body.

2. Materials and Methods

The thin foils were extracted from the Allende matrix by focused ion beam (FIB) at IEMN, University of Lille. The FIB was performed using a dual-beam Thermo-Fisher Strata DB235 workstation. The electron beam source is a field emission gun and for the ion beam source, a liquid/metal gallium was used. Before the thin foil extraction, the selected areas from the Allende meteorite were covered with Pt for protection. For the first part of the extraction, a beam current of about 10 nA at 15 kV was used, and for the final thinning, a beam current of approximately 50 pA at 5 kV was used in order to minimize amorphization, redeposition, and obtain homogeneous thickness of the studied regions, therefore allowing high-resolution high-angle annular dark field (HAADF) imaging and STEM-EELS analysis. The STEM observations were performed on a dedicated Cs-corrected NION UltraSTEM200 at LPS Orsay for the EELS part and a Thermo-Fisher Titan Themis S/TEM at the microscopy platform of the University of Lille for part of the HAADF imaging and the Energy-dispersive X-ray (EDX) mapping. The UltraSTEM200 is equipped with a cold-field emission electron source operating at 100 kV with a probe size of 1 Å and energy resolution of 350 meV in the core-loss region, allowing for an atomic resolution imaging coupled to high energy resolution EELS for fine structure analysis. The TITAN Themis S/TEM is equipped with a high brightness Schottky field emission gun and monochromator. The EELS measurements were performed with a collection semi-angle of 50 mrad for achieving STEM-EELS investigations with high spatial resolution. A probe convergence semi-angle of 30 mrad was selected for high-resolution HAADF imaging. The probe current was approximately 80 pA. The EELS spectra were acquired using the spectrum line and spectrum imaging modes, with an energy dispersion of 0.125 to 0.65 eV/channel and an acquisition time from a few ms to 1 s. Energy dispersions of 0.125 eV/channel were used for the energy loss near edge structures (ELNES) spectra and 0.65 eV/channel for chemical mapping. To minimize electron beam damage as much as possible, we worked using a spectrum imaging mode with a short dwell time per pixel (100 ms) and a beam current of about 80 pA. Under these conditions, we verified that no chemical shift or peak shape modification occurred, by testing different acquisition times, probe current, and high tensions. The HAADF images on the Titan Themis were acquired with a convergence semi-angle of 21 mrad and a camera length allowing collection angles between 50 and 200 mrad. The probe current was selected between 50 and 80 pA. For the STEM-EDX mapping, a Thermo-Fisher super-X windowless 4 quadrants silicon drift detection (SDD) was used.

3. Results

Figure 1 shows representative low magnification TEM and HAADF images of the olivine assemblage in the Allende matrix. The olivine grains have an elongated shape, suggesting a plate or needle morphology. The short axis is along the [100] direction. In the studied matrix area, the composition of the olivine is fairly homogeneous from grain to grain, with the $\text{Fe}/\Sigma(\text{Fe} + \text{Mg})$ ratio close to 0.58 (Fa_{58}), and there is no chemical zoning

inside the grains. Thin planar defects parallel to the (100) planes within the olivine grains are frequent. They appear with higher intensity in the HAADF images in Figure 1c,d, suggesting change in composition. Slightly thicker platelets were found locally at the edges of the olivine grain and, in this case, they were Cr enriched, as it can be seen from the STEM-EDX maps presented in Figure 1e–h. As it can be seen from the HAADF images in Figure 1c,d, the olivine grains also contain numerous low-Z contrast inclusions (darker regions) consisting of Al-rich spinel, indicated with circles in the STEM-EDX map in Figure 1h, voids, and frequent C-rich material.

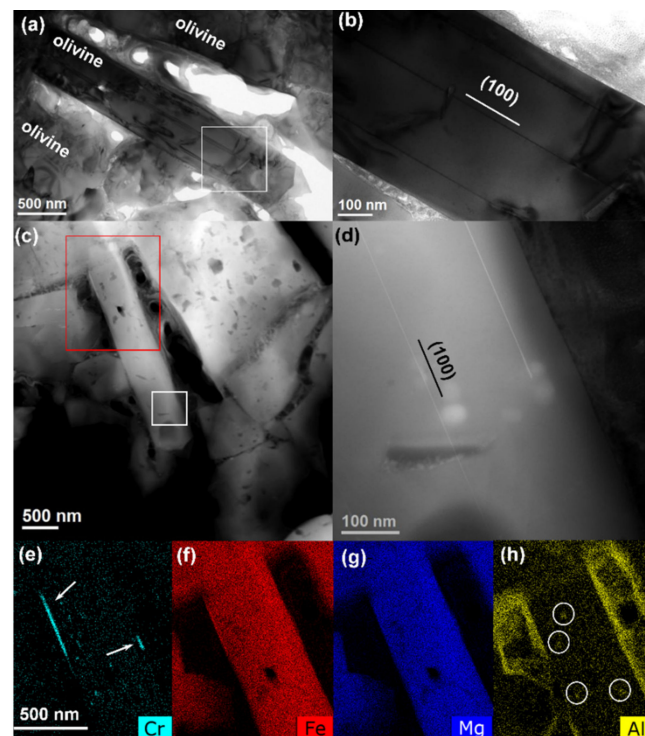


Figure 1. (a) Bright-field TEM image at low magnification showing olivine grains cemented by a poorly crystallized silicate groundmass. Note the elongated shape of the olivine grains. (b) Magnified view corresponding to the white rectangular box in (a). The olivine grains contain frequent thin planar defects parallel to the (100) planes. (c) HAADF image of an elongated olivine grain in the matrix. (d) HAADF magnified view according to the white rectangle in (c) showing that thin planar defects display high Z contrast. (e–h) STEM-EDX maps of respectively Cr, Fe, Mg, and Al of the area marked by red rectangle in (c). The olivine contains numerous low-Z contrast inclusions consisting of Al-rich spinel (indicated with circles in the EDX map in (h), voids, and frequent C-rich material. White arrows in (e) highlight Cr-rich thin platelets that locally cover the olivine edges.

Figure 2 shows typical high-resolution HAADF images of the olivine in the (010) projection where the two different planar features within the olivine are visible. Those two defects follow the (100) planes of olivine. Figure 2d gives the crystallographic representation of the olivine in the same projection. Olivine has orthorhombic lattice (space group: $Pbnm$) with lattice parameters $a = 4.78 \text{ \AA}$, $b = 10.34 \text{ \AA}$, and $c = 6.04 \text{ \AA}$. A magnification of the area marked with a red rectangle in Figure 2b is given in Figure 2c. On the HAADF images in the (010) projection, the brightest atomic columns of the olivine matrix, appearing as doublets along the a ([100]) axis, correspond to mixed columns comprising Si cations in tetrahedral positions and Fe/Mg cations in the $M2$ octahedral position. The doublets with alternating column distances of 2.1 and 2.5 \AA appear as a function of the orientation of the Si tetrahedral along the a axis and this is indicated by ellipses in Figure 2c,d. The less intense columns separated by a distance of 2.25 \AA correspond to mixed Fe/Mg cations in the $M1$ octahedral position. They alternate along the c ([001]) axis with the atomic columns

including the Fe/Mg cations in the *M2* octahedral position. Both planar defects appear along the *c* ([001]) axis in the (100) planes.

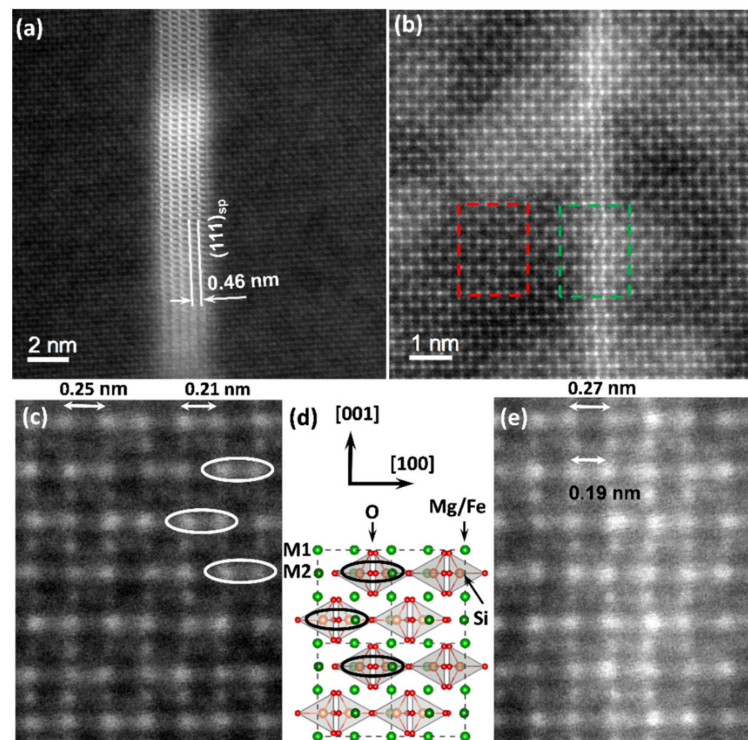


Figure 2. (a) HAADF image of thicker (100) platelets in olivine. (b) HAADF image of 4-atomic-planes-thick (100) planar defect in olivine (green dashed box). (c) Magnification of the olivine matrix in the area marked by the red dashed box in panel (b). In the HAADF image, the brighter columns correspond to a mixture of Si cations in tetrahedral position and Fe/Mg cations in the *M2* position. Along these atomic rows a doublet appears, depending on the orientation of the Si tetrahedra along the [100] axis, with short distances of ~ 0.21 nm (marked by white ellipses) and longer distances of ~ 0.25 nm. The Fe/Mg cations in the *M1* position appear less intense and are separated by a distance of ~ 0.225 nm. They alternate along the [001] axis with the Fe/Mg cations in the *M2* position. (d) The corresponding representation of the olivine crystal lattice in the (010) projection (orange is Si cation, red is O anion, green is Mg/Fe cations in *M1* or *M2* positions). Si tetrahedra are marked in gray. (e) Magnification of the thin planar defect in the area marked by the green dashed box in panel (b). A change, by up to $\sim 20 \pm 7$ pm, of the distances between the mixed atomic columns that include Si cations in tetrahedral positions and Fe/Mg cations in the *M2* octahedral positions is observed.

The defects such as the one observed in the HAADF image in Figure 2a correspond to platelets with thicknesses varying between 2 and 10 nm depending on the specific defect. Similar platelets were also seen in the HAADF image and the STEM-EDX maps in Figure 1c,e at the edge of the olivine grains (marked with white arrows in Figure 1e). These platelets correspond to exsolutions with the spinel structure. From the STEM-HAADF images and the comparison between the extracted fast Fourier transform patterns and simulated electron diffraction patterns, the orientation relationship was determined to correspond to $[100]_{\text{Ol}} \parallel \langle 111 \rangle_{\text{Sp}}$ and $[001]_{\text{Ol}} \parallel \langle 110 \rangle_{\text{Sp}}$ with an interface plane $(100)_{\text{Ol}} \parallel \{111\}_{\text{Sp}}$, which is in agreement with Sung et al. [15].

The thin defects occurring in Figure 2b have thicknesses of 2 to 4 atomic planes. Within these thinner defects, the olivine crystal structure was preserved with only a small distortion of the atomic column positions in the inner atomic planes of the defect. These distortions mainly concern the [100] rows with the mixed atomic columns of Si cations in tetrahedral sites and Fe/Mg cations in the *M2* octahedral positions, and correspond to atomic column displacements up to $\sim 20 \pm 7$ pm averaged over 30 measurements. This distortion concerns

a lengthening of the larger doublet distances (to 2.7 Å) and shortening of the smaller ones (to 1.9 Å), Figure 2e. In the HAADF image, the atomic column positions of the Fe/Mg cations in the M1 octahedral positions within the thin defect remained unchanged. These thinner defects were often connected to the thicker spinel platelets within the olivine. Both HAADF images reveal a clear increase in intensity of the HAADF signal over the thickness of these planar features, indicating a change in chemical composition.

In order to investigate in more detail the planar defects, STEM-EELS experiments were performed. Figure 3a–c gives an online HAADF image of the thicker platelets, relative concentration profiles of the Fe-L_{3,2}, Cr-L_{3,2}, and Mg-K EELS edges, and the corresponding EELS spectra from the platelet and the matrix in the energy range between 500 and 1400 eV, which includes the O-K edge (530 eV), Cr-L_{3,2} edge (575 eV), Fe-L_{3,2} edge (708 eV), and Mg-K edge (1305 eV). The concentration profiles were obtained after careful reduction of noise within the spectrum images using principal component analysis and the curve fitting procedure in order to separate the Cr-L_{3,2} edge at 575 and the O-K edge at 530 eV [16]. The EELS concentration profiles indicated a comparable Fe concentration within the defect and the olivine host. However, the interfaces with the olivine crystals were richer in iron over several atomic planes. This was accompanied by a slight depletion of Mg as compared to the olivine composition. Most significantly, the platelets were rich in Cr. STEM-EDX analysis also showed the presence of Al and revealed that the relative concentration of cations (Cr, Al, Mg, Fe) was found variable from one platelet to another. Therefore, their chemical composition could be considered as a solid solution between magnetite (Fe₃O₄), chromite (FeCr₂O₄), and MgAl₂O₄.

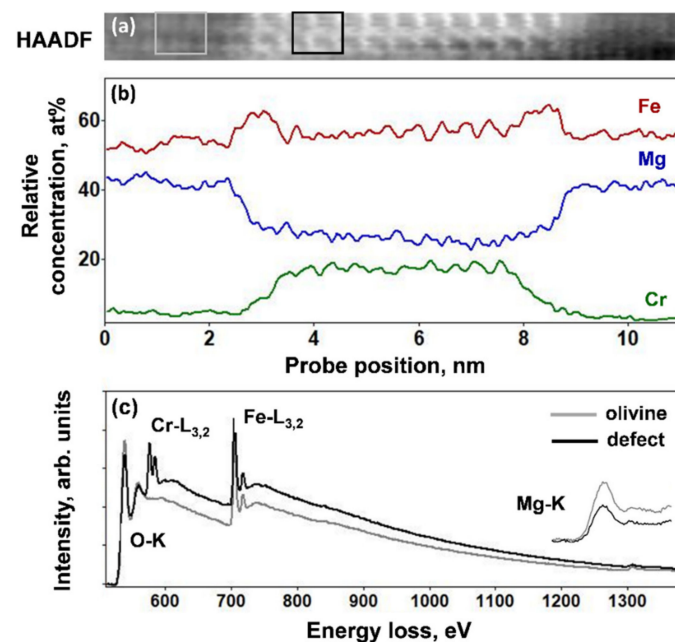


Figure 3. (a) Online HAADF image of the thick (100) platelets comparable to the one shown in Figure 2a. (b) Relative concentration profiles obtained after curve fitting of the Fe-L_{3,2} (red), Cr-L_{3,2} (green), and the Mg-K (blue) electron energy loss spectroscopy (EELS) edges. The profiles show that the platelet is Cr enriched and Mg depleted. The Fe concentration is slightly higher at two/three atomic planes at the interfaces, with respect to the olivine. There is a slight depletion of Mg compared to the olivine. The platelet is Cr enriched. (c) EELS spectra from the platelet and the olivine in the energy range between 500 and 1400 eV, where the O-K, Cr-L_{3,2}, Fe-L_{3,2}, and Mg-K EELS edges appear. The spectra were integrated over 180 pixels and extracted from the corresponding spectrum image from the places indicated by the boxes marked in (a). Gray box in (a) and gray line in (c) correspond to olivine and the black ones to the defect. In the inset of (c), a magnification on the Mg-K edge in between 1280 and 1340 eV is given.

Figure 4a–c shows an online HAADF image of the thinner (100) planar defect, and the corresponding relative concentration profiles of the Mg-K edge and Fe-L_{3,2} edges, together with the EELS spectra in the energy range between 500 and 1400 eV for the olivine and the defect. The EELS profiles clearly show an increase of the Fe concentration accompanied by a decrease in the Mg content. These concentration modifications concern a ~2-nm-thick area and they are highest within a peak region with 0.75 nm width. The Fe and Mg ratio in the olivine, expressed as Fe/Σ(Fe + Mg), was approximately 0.58, while it corresponded to 0.74 within the four atomic planes of the thin defect. This was in good agreement with the increase in HAADF intensity within the 2–4 atomic planes of the defect. Chromium, present in abundance in the thick platelets, was not detected in the thin planar defects.

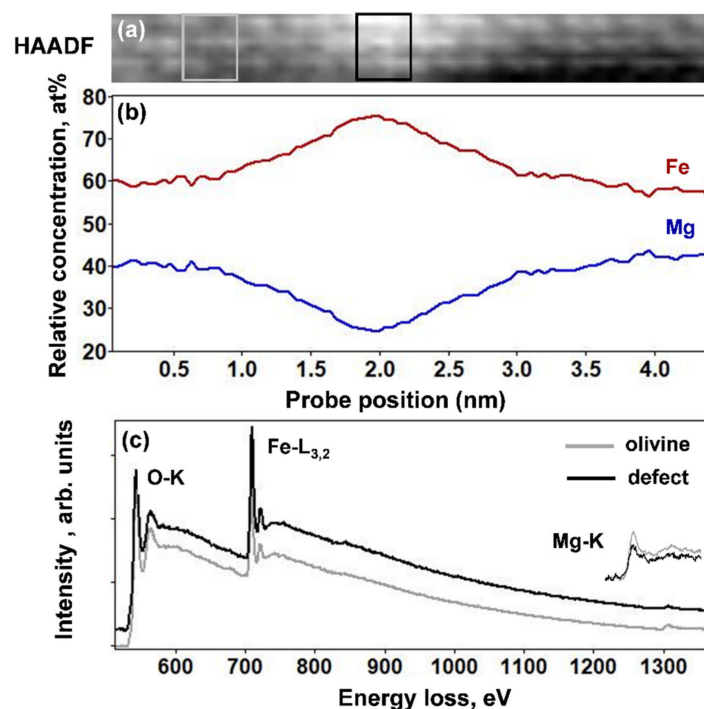


Figure 4. (a) Online HAADF image of thin (100) planar defect, comparable to the one shown in Figure 2b. (b) Relative concentration profiles of the Fe-L_{3,2} and Mg-K EELS edges. The EELS profiles show that this defect is enriched in Fe and depleted in Mg. (c) EELS spectra in the energy range between 500 and 1400 eV, where the O-K, Fe-L_{3,2}, and Mg-K edges appear. The spectra were integrated over 60 pixels and extracted from the corresponding spectrum image from the places indicated by the boxes marked in (a). Gray box in (a) and gray line in (c) correspond to olivine and the black ones to the defect. In the inset of (c) a magnification on the Mg-K edge in between 1280 and 1340 eV is given.

In order to understand the electronic structure of the defects, we looked more closely into the electron energy loss near edge structure (ELNES) at the Fe-L_{3,2} edge as given in Figure 5. The fine structures revealed a shift towards higher energies of Fe-L_{3,2} and thus a change in the Fe oxidation state. In olivine, iron is in the Fe²⁺ valence state (black line) and this is accompanied by a shift towards the Fe³⁺ state within the atomic planes of the thinner (100) planar defect (green line). A small Fe³⁺ contribution was also seen within the platelets with spinel structure (red line). The ELNES spectra for both features were fitted with typical reference spectra for Fe²⁺ and Fe³⁺ oxidation states as a linear combination of individual components in order to quantify locally, within the defects, the mixed Fe oxidation state [17,18]. The olivine matrix was used as a Fe²⁺ reference (black line) and hematite (Fe₂O₃) crystals for a reference spectrum of the Fe³⁺ oxidation state (blue line). Using this fitting procedure, we obtained the spectral contributions of the two references for the fitted spectrum and thereby we determined, for the Cr-rich platelets, the Fe³⁺/ΣFe

ratio of the order of 0.16. The cationic concentration profiles discussed in Figure 3b reveal that within these platelets with spinel structure the Fe and Cr relative concentration did not correspond to the nominal stoichiometry of chromite (FeCr_2O_4) and the composition of these platelets could be expressed as a solid solution between magnetite (Fe_3O_4), chromite (FeCr_2O_4), and MgAl_2O_4 . Indeed, for magnetite Fe could be both divalent and trivalent, while in chromite Fe is only in 2+ oxidation state, and in the octahedral coordination and Cr alone is in a 3+ oxidation state. It could rest both in octahedral and tetrahedral sites. The higher Fe concentration and the ELNES data suggested that the tetrahedral sites within the spinel platelets were shared between the Cr^{3+} cations, about 16% of the Fe cations (those in Fe^{3+} oxidation state), and the small amount of Al^{3+} . The presence of Cr and Al in these thick platelets is probably the consequence of the precipitation of these elements initially solubilized in olivine. For the thinner Fe-rich planar defect, we obtained a higher $\text{Fe}^{3+}/\Sigma\text{Fe}$ ratio of the order of 0.31. The reference spectra in Figure 5 for both the olivine matrix and the hematite were plotted with their respective spectral contributions deduced from the best fit of the experimental spectra for the thin defect. This suggests that the augmentation of the Fe concentration in the thin planar defects was accompanied by a change in the oxidation state towards Fe^{3+} for up to approximately 30% of the iron.

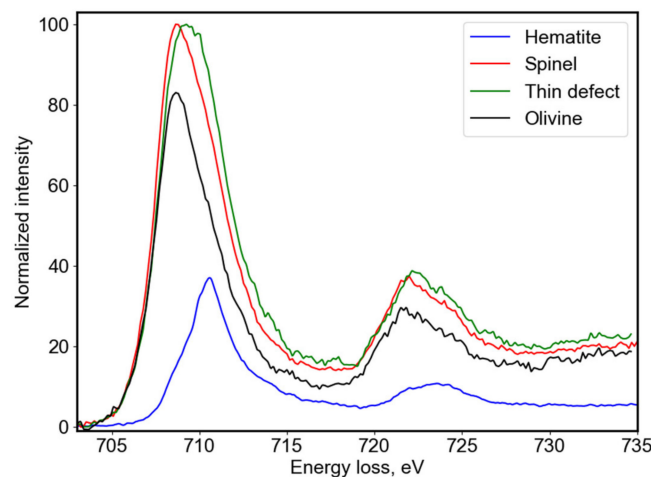


Figure 5. The energy loss near edge structures (ELNES) spectra at Fe- $L_{3,2}$ edge for the thin planar defect (green line), the thicker platelet with spinel structure (red line), the olivine matrix (black line), and a reference spectrum for hematite (blue line). In order to provide direct comparison, the spectra were extracted from spectrum images with a size of 172 per 5 px containing both host olivine and the two types of defects. The presented spectra are a sum of 28 px for the thick spinel platelet (red line) and the olivine matrix (black line) and 20 px for the thin planar defect (green line). These ELNES structures reveal a slight change of the Fe oxidation state within both features, the platelet with the spinel structure, and the thin planar defect. The olivine iron is in Fe^{2+} oxidation state and it becomes slightly Fe^{3+} within the thicker spinel platelet. The change to Fe^{3+} is more strongly pronounced in the thin planar defects. For hematite, Fe is in trivalent oxidation state. The ELNES spectra for the olivine and hematite were used to obtain the $\text{Fe}^{3+}/\Sigma\text{Fe}$ ratio for both features. These reference spectra are plotted with their corresponding spectral contributions needed to obtain the best fit for the thin planar defect.

4. Discussion and Conclusions

The fine-grained matrix material in primitive chondrites is recurrently a matter of debate. This matrix originates from the accretion of dust of the protoplanetary disk, but later events may induce their modification on parent bodies. In the case of CV chondrites, the matrix contains abundant Fe-rich olivine. This contrasts sharply with the mineralogy of the matrix in most primitive chondrites, which are mainly composed of amorphous silicates with a composition close to the solar composition [19–21]. To explain the presence of Fe-rich olivine in the CV chondrites, three scenarios were proposed. These include:

(1) The formation by condensation in a nebular context, i.e., before the formation of the parent bodies [1,2]; (2) a direct formation in an aqueous environment by the metasomatism process [4]; and (3) an indirect formation through dehydration of phyllosilicates during thermal metamorphism [3,7]. This debate is not definitively closed, but the scenario involving metasomatism appears to be the most robust one. Indeed, thermochemical modeling showed that ferroan olivine could form at very moderate temperatures (100–200 °C) in aqueous environments [22,23]. In addition, TEM studies revealed the presence of nano-sized inclusions of organic matter and sulfides in these olivine grains [7–9]. These inclusions could hardly be explained by a high temperature formation. Finally, it is now well established that CV chondrites have undergone aqueous alteration followed by thermal metamorphism. All these elements tend to favor formation on the parent body by a secondary process.

Planar defects in olivine are not frequent but several occurrences have been reported in different contexts. For instance, it has been proposed that they could play a role in the olivine-ringwoodite transformation at high pressure [24,25]. Several occurrences of planar defects were also reported in mantle olivine and were interpreted as linked to the segregation of iron oxides or OH-bearing defects parallel to the (001) and (100) planes of olivine, under oxidizing or hydrous conditions, respectively [26–30]. Experimental works were carried out with Fe-rich olivine under oxidizing conditions [31]. These studies showed that Fe-oxides are produced as extended thin planar defects or needles with a topotactic relationship with the olivine matrix. In olivine from the matrix of CV3 chondrites, planar defects have been reported by several authors [8,10–12]. Tomeoka and Buseck [12] suggested that oxidizing conditions could have been the cause of the formation of the (100) lamellae in olivine.

Our EELS results confirm the interpretation by Tomeoka and Buseck [12]. The characterization at the atomic scale of the defects showed that they contained a significant amount of Fe^{3+} ($\text{Fe}^{3+}/\Sigma\text{Fe} = 0.31$, Figure 5). For high oxygen fugacity, olivine is no longer stable because iron tends to become trivalent. The formation of Fe^{3+} is associated with that of vacancies on octahedral sites in order to preserve the electroneutrality of the crystal network [32]. If the temperature is sufficient to allow atomic mobility, the Fe trivalent cations segregate and contribute to the exsolution lamellae growth. When the lamellae became thicker, they adopted a spinel-like structure with epitaxial relationships with the host olivine. Both structures share their hexagonal close packing of oxygen ions according to the structural relationships $(100)_{\text{ol}}// (111)_{\text{sp}}$. When the planar defects were very thin, our high-resolution HAADF study showed that their structure was close to that of olivine, but with small lattice distortions. In this case, olivine imposed the crystallographic structure of the exsolution layer. The distortions which were observed in the HAADF images concerned to the largest extent the mixed atomic columns with tetrahedral Si cations and Fe/Mg cations in the M_2 octahedral position. Therefore, we believe that they could be explained by substitution of Fe^{3+} in the place of Si^{4+} in the tetrahedral sites. Indeed, for spinel, the $M_{\text{T}}\text{-O}$ distances, where M_{T} signifies cations in tetrahedral positions, are smaller for Si^{4+} as compared to Fe^{3+} cations by about 25 to 35 pm. The reported cation–anion distances for the octahedral sites are in a similar manner larger by about 20 to 30 pm for both divalent and trivalent Fe as compared to Si cations [33]. Moreover, for olivine, both Si tetrahedra and metal octahedra are distorted, where these distortions and the length of cation–anion bonds could be different depending on the chemical nature and the oxidation state of the cation. The differential lengthening of the Si–O and/or Fe–O bonds is related to cation repulsion [34]. This could explain the measured alternative lengthening and shortening, by up to 20 pm, of the doublet structures in our HAADF images (Figure 2e) containing atomic columns with Si cations, when those tetravalent cations were replaced by Fe^{3+} ones within the tetrahedra. In order to preserve the charge balance within these Fe^{3+} -rich thin defects, a change of the valence state to Fe^{3+} of a nearby Fe^{2+} in octahedral sites or a substitution of divalent Mg cations by ferric iron should simultaneously take place. The decrease of Mg relative concentration by approximately 15%, as seen in Figure 4b, agreed with this

substitution scheme. This substitution reaction is comparable to the formation of ferri-Tschermak's molecule in clinopyroxenes, where two trivalent iron cations substitute one Si^{4+} and one Mg^{2+} cation [35]. The thin planar defects observed in high-resolution HAADF images in Figure 2b therefore should represent an intermediate arrangement between the olivine and spinel structures, where Fe^{3+} - Si^{4+} and Fe^{3+} - Mg^{2+} substitutions take place, but the structural transformation to a spinel structure is yet limited by the crystallographic constraints imposed by the olivine. This configuration is close to the Guinier–Preston zones, which involve the early stage of precipitation, frequently encountered in metals and in some silicates like pyroxene for instance [36]. The extended thin planar defects in the Allende olivine are essentially distorted region of the matrix, enriched in Fe^{3+} , but not lamellae, which express a different lattice. These planar defects are metastable and finally convert into the spinel structure when they become thicker than a few unit cells.

The Allende chondrite is part of the CV3 oxidized subgroup [37]. The matrix of Allende has been significantly transformed on the CV3 parent body, leading to a wide range of secondary minerals. Fe-rich olivine is the main secondary mineral in the Allende matrix [38]. Our study showed that olivine underwent an episode of oxidation as attested by the presence of thin planar defects rich in Fe^{3+} . The Al-Cr-rich platelets also contained Fe^{3+} but in lower concentration. The exsolution formation required first a change of iron valence state, followed by thermoactivated diffusion and substitution of Si^{4+} by Fe^{3+} . This level of oxidation is not compatible with a nebular, pre-accretionary formation of olivine because of the too-low partial pressure of oxygen. For this reason, it is likely that the exsolution lamellae (thin planar defects and platelet) developed within the parent body during the metamorphic stage. In CV3, due to the complexity of the mineralogy in the matrices, the peak temperature associated with the metamorphic episode of the parent body is not well constrained. Estimates of the peak temperature range from 330–600 °C depending on the markers used (see review in [39]). The Fe^{3+} -rich planar defects should make it possible to better constrain the metamorphic peak temperature. However, the Si diffusion coefficients depend on many parameters (oxygen fugacity, FeO content in olivine, presence of OH type defects) and the published values show strong variations depending on the experimental conditions (see review in [40]). Moreover, there are no experimental data in the temperature range 300–600 °C. Using the average values for diffusion of Si recommended by Zhang and Shan [40] at atmospheric pressure and extrapolating them to moderate temperatures and a metamorphic event 1×10^6 yrs, the diffusion distance $x = 2\sqrt{Dt}$ was of the order of 0.1 nm at 500 °C and of a few nanometers at 600 °C. This calculation must be taken with caution for the reasons mentioned above, but it is well compatible with the temperature range of the metamorphic peak temperature of Allende.

Author Contributions: Conceptualization, P.C., M.M., and H.L.; methodology, M.M., P.C., and D.J.; validation, M.M., H.L., P.C., A.G., and D.J.; TEM experiments, A.G., M.M., and P.C.; writing—original draft preparation, M.M. and H.L.; writing—review and editing, P.C., A.G., and D.J.; supervision, H.L. All authors have read and agreed to the published version of the manuscript.

Funding: The authors thank the Chevreul Institute (FR 2638) for its help in the development of this work. Chevreul Institute and the TEM facility in Lille is supported by the « Ministère de l'Enseignement Supérieur et de la Recherche », the Conseil Régional du Nord-Pas de Calais and the European Regional Development Fund (ERDF). The authors acknowledge support from the CNRS-CEA "METS" microscopy French network for the STEM-EELS experiments. They also thank the ISITE ULNE (Université Lille Nord Europe) and the MEL (Métropole Européenne de Lille).

Institutional Review Board Statement: Not applicable.

Informed Consent Statement: Not applicable.

Data Availability Statement: The data presented in this study are available on request from the corresponding author.

Acknowledgments: The authors thank D. Troadec from the Institut d'Électronique de Microélectronique et de Nanotechnologie (IEMN), University of Lille, for the preparation of high-quality FIB sections. We thank the three anonymous reviewers for their careful reading of our manuscript and their in-

sightful comments and suggestions which helped us to improve the quality and the presentation of the manuscript.

Conflicts of Interest: The authors declare no conflict of interest.

References

1. Weisberg, M.K.; Prinz, M. Fayalitic olivine in CV3 chondrite matrix and dark inclusions: A nebular origin. *Meteorit. Planet. Sci.* **1998**, *33*, 1087–1099. [[CrossRef](#)]
2. Palme, H.; Fegley, B. High-temperature condensation of iron-rich olivine in the solar nebula. *Earth Planet. Sci. Lett.* **1990**, *101*, 180–195. [[CrossRef](#)]
3. Kojima, T.; Tomeoka, K. Indicators of aqueous alteration and thermal metamorphism on the CV parent body: Microtextures of a dark inclusion from Allende. *Geochim. Cosmochim. Acta* **1996**, *60*, 2651–2666. [[CrossRef](#)]
4. Krot, A.N.; Petaev, M.I.; Bland, P.A. Multiple formation mechanisms of ferrous olivine in CV carbonaceous chondrites during fluid-assisted metamorphism. *Antarct. Meteor. Res.* **2004**, *17*, 154–172.
5. Watt, L.E.; Bland, P.A.; Prior, D.J.; Russell, S.S. Fabric analysis of Allende matrix using EBSD. *Meteorit. Planet. Sci.* **2006**, *41*, 989–1001. [[CrossRef](#)]
6. Bland, P.A.; Howard, L.E.; Prior, D.J.; Wheeler, J.; Hough, R.M.; Dyl, K.A. Earliest rock fabric formed in the Solar System preserved in a chondrule rim. *Nat. Geosci.* **2011**, *4*, 244–247. [[CrossRef](#)]
7. Brearley, A.J. Origin of graphitic carbon and pentlandite in matrix olivines in the Allende meteorite. *Science* **1999**, *280*, 1380–1382. [[CrossRef](#)]
8. Abreu, N.M.; Brearley, A.J. Deciphering the nebular and asteroidal record of silicates and organic material in the matrix of the reduced CV3 chondrite Vigarano. *Meteorit. Planet. Sci.* **2011**, *46*, 252–274. [[CrossRef](#)]
9. Cuvillier, P.; Leroux, H.; Jacob, D.; Hirel, P. Fe-Mg interdiffusion profiles in rimmed forsterite grains in the Allende matrix: Time-temperature constraints for the parent body metamorphism. *Meteorit. Planet. Sci.* **2015**, *50*, 1529–1545. [[CrossRef](#)]
10. Keller, L.P.; Buseck, P.R. Aqueous alteration in the Kaba CV3 carbonaceous chondrite. *Geochim. Cosmochim. Acta* **1990**, *54*, 2113–2120. [[CrossRef](#)]
11. Keller, L.P.; Thomas, K.L.; Clayton, R.N.; Mayeda, T.K.; DeHart, J.M.; McKay, D.S. Aqueous alteration of the Bali CV3 chondrite: Evidence from mineralogy, mineral chemistry, and oxygen isotopic compositions. *Geochim. Cosmochim. Acta* **1994**, *58*, 5589–5598. [[CrossRef](#)]
12. Tomeoka, K.; Buseck, P.R. Phyllosilicates in the Mokoia CV carbonaceous chondrite: Evidence for aqueous alteration in an oxidizing environment. *Geochim. Cosmochim. Acta* **1990**, *54*, 1745–1754. [[CrossRef](#)]
13. Lee, M.R.; Hutchison, R.; Graham, A.L. Aqueous alteration in the matrix of the Vigarano (CV3) carbonaceous chondrite. *Meteorit. Planet. Sci.* **1996**, *31*, 477–483. [[CrossRef](#)]
14. Noguchi, T.; Ishikawa, K.; Ninagawa, K. Effects of terrestrial weathering on the matrix mineralogy of colony CO₃ chondrite. *Antarct. Meteor. Res.* **1999**, *12*, 36–56.
15. Sung, C.-M.; Burns, R.G. Crystal structural features of the olivine → spinel transition. *Phys. Chem. Miner.* **1978**, *2*, 177–197. [[CrossRef](#)]
16. De la Peña, F.; Prestat, E.; Fauske, V.T.; Burdet, P.; Furnival, T.; Jokubauskas, P.; Nord, M.; Ostasevicius, T.; MacArthur, K.E.; Johnstone, D.N.; et al. *HyperSpy 1.6.1*; Zenodo, CERN: Meyrin, Switzerland, 2020. [[CrossRef](#)]
17. Chen, S.-Y.; Gloter, A.; Zobelli, A.; Wang, L.; Chen, C.-H.; Colliex, C. Electron energy loss spectroscopy and ab initio investigation of iron oxide nanomaterials grown by a hydrothermal process. *Phys. Rev. B* **2009**, *79*, 104103. [[CrossRef](#)]
18. Van Aken, P.A.; Liebscher, B. Quantification of ferrous/ferric ratios in minerals: New evaluation schemes of Fe L23electron energy-loss near-edge spectra. *Phys. Chem. Miner.* **2002**, *29*, 188–200. [[CrossRef](#)]
19. Brearley, A.J. Matrix and fine-grained rims in the unequilibrated CO₃ chondrite, ALHA77307: Origins and evidence for diverse, primitive nebular dust components. *Geochim. Cosmochim. Acta* **1993**, *57*, 1521–1550. [[CrossRef](#)]
20. Le Guillou, C.; Brearley, A. Relationships between organics, water and early stages of aqueous alteration in the pristine CR3.0 chondrite MET 00426. *Geochim. Cosmochim. Acta* **2014**, *131*, 344–367. [[CrossRef](#)]
21. Leroux, H.; Cuvillier, P.; Zanda, B.; Hewins, R.H. GEMS-like material in the matrix of the Paris meteorite and the early stages of alteration of CM chondrites. *Geochim. Cosmochim. Acta* **2015**, *170*, 247–265. [[CrossRef](#)]
22. Zolotov, M.Y.; Mironenko, M.V.; Shock, E.L. Thermodynamic constraints on fayalite formation on parent bodies of chondrites. *Meteorit. Planet. Sci.* **2006**, *41*, 1775–1796. [[CrossRef](#)]
23. Jogo, K.; Nakamura, T.; Noguchi, T.; Zolotov, M.Y. Fayalite in the Vigarano CV3 carbonaceous chondrite: Occurrences, formation age and conditions. *Earth Planet. Sci. Lett.* **2009**, *287*, 320–328. [[CrossRef](#)]
24. Kerschhofer, L.; Rubie, D.C.; Sharp, T.G.; McConnell, J.D.C.; Dupas-Bruzek, C. Kinetics of intracrystalline olivine–ringwoodite transformation. *Phys. Earth Planet. Inter.* **2000**, *121*, 59–76. [[CrossRef](#)]
25. Chen, M.; Goresy, A.E.; Gillet, P. Ringwoodite lamellae in olivine: Clues to olivine–ringwoodite phase transition mechanisms in shocked meteorites and subducting slabs. *Proc. Natl. Acad. Sci. USA* **2004**, *101*, 15033–15037. [[CrossRef](#)] [[PubMed](#)]
26. Kitamura, M.; Kondoh, S.; Morimoto, N.; Miller, G.H.; Rossman, G.R.; Putnis, A. Planar OH-bearing defects in mantle olivine. *Nature* **1987**, *328*, 143–145. [[CrossRef](#)]

27. Banfield, J.F.; Veblen, D.R.; Jones, B.F. Transmission electron microscopy of subsolidus oxidation and weathering of olivine. *Contrib. Mineral. Petrol.* **1990**, *106*, 110–123. [[CrossRef](#)]
28. Banfield, J.F.; Dyar, M.D.; McGuire, A.V. The defect microstructure of oxidized mantle olivine from Dish Hill, California. *Am. Mineral.* **1992**, *77*, 977–986.
29. Khisina, N.R.; Wirth, R.; Andrut, M.; Ukhanov, A.V. Extrinsic and intrinsic mode of hydrogen occurrence in natural olivines: FTIR and TEM investigation. *Phys. Chem. Miner.* **2001**, *28*, 291–301. [[CrossRef](#)]
30. Khisina, N.; Wirth, R.; Matsyuk, S.; Koch-Müller, M. Microstructures and OH-bearing nano-inclusions in. *Eur. J. Mineral.* **2008**, 1067–1078. [[CrossRef](#)]
31. Champness, P.E. Nucleation and growth of iron oxides in olivines, $(\text{Mg,Fe})_2\text{SiO}_4$. *Mineral. Mag.* **1970**, *37*, 790–800. [[CrossRef](#)]
32. Buening, D.K.; Buseck, P.R. Fe-Mg lattice diffusion in olivine. *J. Geophys. Res.* **1973**, *78*, 6852–6862. [[CrossRef](#)]
33. Hazen, R.M.; Yang, H. Effects of cation substitution and order-disorder on P-V-T equations of state of cubic spinels. *Am. Mineral.* **1999**, *84*, 1956–1960. [[CrossRef](#)]
34. Birle, J.D.; Gibbs, G.V.; Moore, P.B.; Smith, J.V. Crystal structures of natural olivines. *Am. Mineral.* **1968**, *53*, 807–824.
35. Redhammer, G.J. Mössbauer spectroscopy and Rietveld refinement on synthetic ferri-Tschermak's molecule $\text{CaFe}^{3+}(\text{Fe}^{3+}\text{Si})\text{O}_6$ substituted diopside. *Eur. J. Mineral.* **1998**, *10*, 439–452. [[CrossRef](#)]
36. Xu, H.; Shen, Z.; Konishi, H.; Luo, G. Crystal structure of Guinier-Preston zones in orthopyroxene: Z-contrast imaging and ab initio study. *Am. Mineral.* **2014**, *99*, 2043–2048. [[CrossRef](#)]
37. Mcsween, H.Y. Petrographic variations among carbonaceous chondrites of the Vigarano type. *Geochim. Cosmochim. Acta* **1977**, *41*, 1777–1790. [[CrossRef](#)]
38. Krot, A.N.; Petaev, M.I.; Zolensky, M.E.; Keil, K.; Scott, E.R.D.; Nakamura, K. Secondary calcium-iron-rich minerals in the Bali-like and Allende-like oxidized CV3 chondrites and Allende dark inclusions. *Meteorit. Planet. Sci.* **1998**, *33*, 623–645. [[CrossRef](#)]
39. Ganino, C.; Libourel, G. Reduced and unstratified crust in CV chondrite parent body. *Nat. Commun.* **2017**, *8*, 1–10. [[CrossRef](#)]
40. Zhang, B.; Shan, S. Application of the $\text{cB}\Omega$ model to the calculation of diffusion parameters of Si in silicates. *Geochem. Geophys. Geosyst.* **2015**, *16*, 705–718. [[CrossRef](#)]