



HAL
open science

Stress-induced amorphization triggers deformation in the lithospheric mantle

Vahid Samae, Patrick Cordier, Sylvie Demouchy, Caroline Bollinger, Julien Gasc, Sanae Koizumi, Alexandre Mussi, Dominique Schryvers, Hosni Idrissi

► **To cite this version:**

Vahid Samae, Patrick Cordier, Sylvie Demouchy, Caroline Bollinger, Julien Gasc, et al.. Stress-induced amorphization triggers deformation in the lithospheric mantle. *Nature*, 2021, 591 (7848), pp.82-86. 10.1038/s41586-021-03238-3 . hal-03160173

HAL Id: hal-03160173

<https://hal.univ-lille.fr/hal-03160173>

Submitted on 5 Mar 2021

HAL is a multi-disciplinary open access archive for the deposit and dissemination of scientific research documents, whether they are published or not. The documents may come from teaching and research institutions in France or abroad, or from public or private research centers.

L'archive ouverte pluridisciplinaire **HAL**, est destinée au dépôt et à la diffusion de documents scientifiques de niveau recherche, publiés ou non, émanant des établissements d'enseignement et de recherche français ou étrangers, des laboratoires publics ou privés.

Stress-induced amorphization triggers deformation in the lithospheric mantle

Vahid Samae¹, Patrick Cordier^{2,3,†}, Sylvie Demouchy⁴, Caroline Bollinger^{5,*}, Julien Gasc^{4,*}, Sanae Koizumi⁶, Alexandre Mussi², Dominique Schryvers¹ & Hosni Idrissi^{7,1}

Received: 3 February 2020

Accepted: 13 January 2021

Published: 3 March 2021

Cite as:

V. Samae, P. Cordier, S. Demouchy, C. Bollinger, J. Gasc, S. Koizumi, A. Mussi, D. Schryvers & H. Idrissi (2021) Stress-induced amorphization triggers deformation in the lithospheric mantle. *Nature* **591**, 82–86

Final version at:

<https://doi.org/10.1038/s41586-021-03238-3>

The mechanical properties of olivine-rich rocks are central to decipher the partial mechanical coupling between the lithosphere and asthenosphere. In crystalline materials, the motion of crystal defects is fundamental to plastic flow¹⁻⁴. Olivine-rich rocks are facing the issue that their main constituent does not have enough slip systems to satisfy general strain conditions. Therefore, additional deformation mechanisms are needed. Recent experimental studies in rock physics have brought forward a non-Newtonian, grain size sensitive, mechanism in olivine involving grain boundary sliding (GBS)^{5,6}. Nevertheless, very few microstructural investigations have been conducted on GBS and there is still no consensus on whether a single or multiple physical mechanisms are at play. Most importantly, to date no theoretical framework is available to incorporate grain boundary mechanics in polycrystalline plasticity models. Here we identify such a mechanism. We show for the first time that in forsterite, amorphization takes place at grain boundaries under stress and that the onset of ductility of olivine-rich rocks is due to the activation of grain boundary mobility on these amorphous layers. We propose that this mechanism can trigger plastic processes in the deep Earth where high stress conditions are encountered (*e.g.* at the brittle-plastic transition). The implications will be maximal in the lithosphere-asthenosphere transition layer, where a viscosity drop can be triggered by the glass transition temperature of amorphous olivine, promoting GBS.

Different kinds of crystal defects are usually involved in the plastic flow of rocks. Atomic mobility promoted by vacancies can be the cause for diffusion creep provided the grain size is small enough (< 100 microns). This deformation regime is linear Newtonian. For larger grain sizes (> 500 microns), the motion of linear crystal defects, dislocations, is responsible for the dislocation creep. This latter regime is grain-size insensitive and exhibits a marked stress sensitivity described by a power law at high temperature and an exponential law at lower temperatures¹⁻³. Grain boundaries are another class of defects which are less

well understood⁴. In 1995, Hirth and Kohlstedt⁵ defined a non-Newtonian deformation regime involving grain boundary sliding (GBS), which, although grain size sensitive, was not known previously in olivine. This grain size sensitive mechanism may be important in inducing strain localization in the lithosphere⁶. GBS is identified by displacements across grain boundaries which have been observed in high-temperature deformation experiments in the diffusion creep regime⁷, and in the dislocation creep regime⁸. Grain boundary sliding also operates under high confining pressure (3-5 GPa) relevant for the base of the continental

† Corresponding author : Patrick Cordier (Patrick.cordier@univ-lille.fr) - ORCID: 0000-0002-1883-2994. ¹*Electron Microscopy for Materials Science, University of Antwerp, Antwerp, Belgium.* ²*Univ. Lille, CNRS, INRAE, Centrale Lille, UMR 8207 - UMET - Unité Matériaux et Transformations, F-59000 Lille, France.* ³*Institut Universitaire de France, 1 rue Descartes, F-75005 Paris, France.* ⁴*Géosciences Montpellier, Université de Montpellier and CNRS, UMR 5243, Montpellier, France.* ⁵*Bayerisches Geoinstitut, Universität Bayreuth, D-95445 Bayreuth, Germany.* ⁶*Earthquake Research Institute, University of Tokyo, Tokyo, Japan.* ⁷*Institute of Mechanics, Materials and Civil Engineering, UCLouvain, Louvain-la-Neuve, Belgium.* * Now at IRAP, Université de Toulouse, CNRS, CNES, UPS, F- 31400 Toulouse, France. † Now at Laboratoire de Géologie, École Normale Supérieure and CNRS, UMR8538, Paris, France

lithosphere⁸⁻¹⁰. In the present paper, by GBS, we refer to the elementary deformation process that involves a rigid shear displacement of a grain relative to a neighbouring grain. Traditionally, sliding refers to a displacement parallel to the boundary plane. This does not exclude a component of displacement normal to the boundary (migration) since both are often coupled¹¹. In an aggregate, GBS leads to incompatibilities. This phenomenon is encountered when boundaries are not perfectly planar¹², but also at triple junctions. When strains remain small (10^{-6}) as during forced-oscillation experiments to measure anelasticity¹³, incompatibilities can be accommodated elastically. This important case which contributes to the anelastic behaviour of the Earth mantle^{13, 14}, is not considered in the present study. For larger strains (several %), GBS can only proceed if other deformation mechanisms are activated to release these incompatibilities. These mechanisms can be either diffusive or involve dislocations and yield to creep behaviours which are usually referred as to diffusion- or dislocation-accommodated GBS creep. This terminology is, however, rather confusing since all mechanisms should be considered concomitant with no intrinsic hierarchy between them (one accommodating another). A subsequent unsolved question is which mechanism produces this grain boundary shear at the microscopic scale. The earliest suggestions were diffusional processes and glide or climb of dislocations inside the boundary plane¹¹. The existence of specific grain boundary defects has also been proposed: disconnections, *i.e.* line defects constrained to crystalline interfaces with both step and dislocation character^{11, 15, 16}, or disclinations, *i.e.* rotational Volterra defects¹⁷⁻¹⁹. Here we undertake a detailed microstructural investigation of selected deformation experiments involving GBS to further identify the mechanisms at play.

Ref sample	Apparatus	Pressure (GPa)	Temperature (°C)	Final strain (%)	Final stress (MPa)
NF950-1 ²⁰	Paterson press	0.3	950	3.1	1510
NF1050-1 ²⁰	Paterson press	0.3	1050	10.4	1140
NF1200-1 ²⁰	Paterson press	0.3	1200	10.0	480
M582 ⁸	Six-ram press	5	1000	30	-
M640 ⁸	Six-ram press	5	1000	40	-
M576 ⁸	Six-ram press	5	1100	28	-
M628 ⁸	Six-ram press	5	1200	20	-

Table 1: Summary of the deformation conditions of the specimens investigated in the present study. Deformation experiments are described in Bollinger *et al.* (2019)⁸, and Gasc *et al.* (2019)²⁰. For experiments performed in the six-ram press, the final strains are estimated from the displacements of the pistons and the stress is not measured.

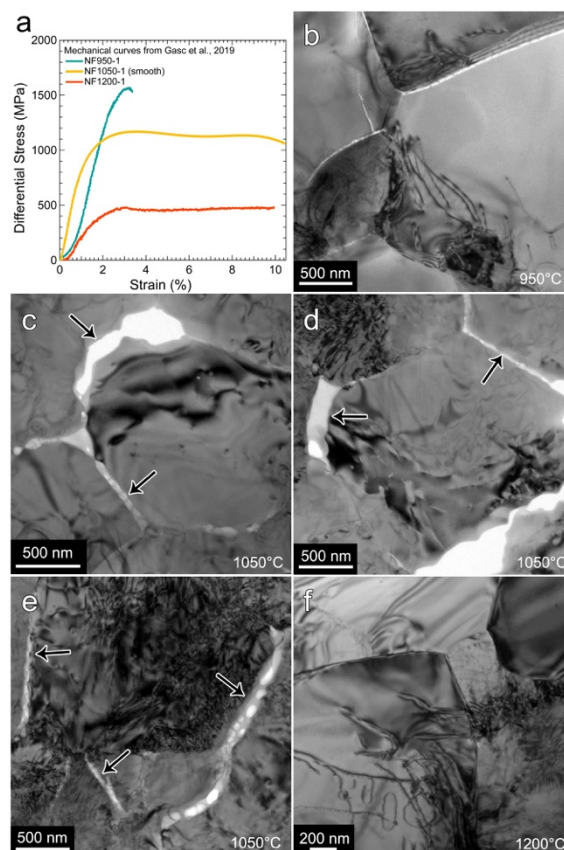


Figure 1: Specimens deformed with a Paterson press. a) Mechanical curves in axial compression. b-f) TEM-bright field micrographs of specimens NF950-1, NF1050-1 and NF1200-1

We investigate specimens from two previous independent studies^{8,20}. The starting materials and experimental procedures are described in the Methods section. The deformation conditions are summarized in Table 1. We have selected three representative specimens (NF950-1, NF1050-1 and NF1200-1) out of the eight deformation experiments performed by Gasc *et al.*²⁰. They illustrate a consistent evolution with increasing temperature as shown from mechanical data and microstructures observed by conventional transmission electron microscopy (CTEM) as shown in Figure 1 (See also Extended Data Figure 1). Below 1000 °C, the stress significantly exceeds confining pressure (> 300 MPa), and the samples fail after very limited plastic deformation (Figure 1a). TEM investigation shows that failure occurs predominantly at grain boundaries with some evidence of local ductile behaviour (Figure 1b). At 1200 °C, ductile deformation typical of high temperature creep of olivine is observed and dislocation activity is confirmed by TEM (Figure 1f). In between these temperatures, one observes a transitional regime where stresses are still high (around 1 GPa) but with some ductility and where a steady-state is reached. This regime is characterized by striking microstructures showing abundant evidence for displacements across grain boundaries, either parallel

(sliding) or perpendicular (opening, cavitation) to the boundaries (see black arrows in Figures 1c, d and e). Such microstructures have already been reported in metallic alloys (alpha iron-tin alloys²¹, Ni-Cr alloys²², steel²³) and germanates²⁴, and interpreted as evidence of GBS. At 1050 °C, boundaries often show evidence of local ductility, with serration and presence of an intergranular amorphous material (see black arrows in Figure 1). Microanalysis in the TEM shows that this amorphous phase exhibits the same chemical composition as the forsterite matrix (see Extended Data Figure 2). Heterogeneous intragranular dislocation activity is also observed, but we could not find any correlation between the amount of displacement across a boundary and the local dislocation activity in neighbouring grains (Extended data Figure 3).

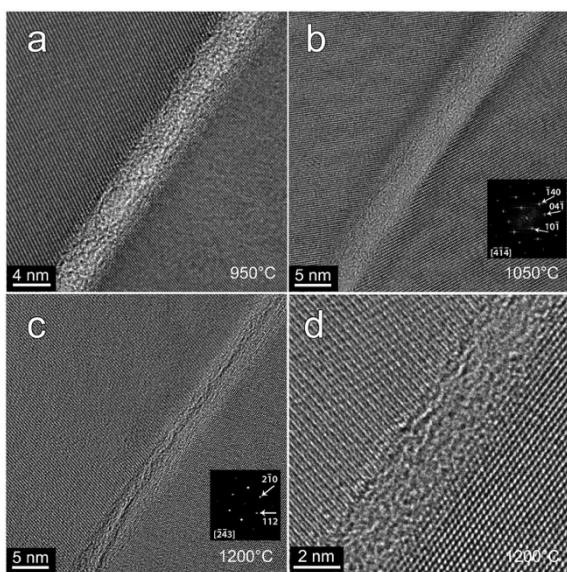


Figure 2: HRTEM of specimens deformed in the Paterson press. HRTEM micrographs of specimens a) NF950-1, b) NF1050-1 and c, d) NF1200-1. Fast Fourier Transform (FFTs) are shown in (b) and (c) confirming the olivine structure.

We have investigated the fine structure of grain boundaries using high-resolution transmission electron microscopy (HRTEM). In specimens deformed at 950°C and 1050°C, many grain boundaries exhibit an intergranular amorphous layer even at a finer scale than those observed in CTEM (Figure 2a, b). The thickness of these layers varies and can be as small as a few nanometres. The most surprising observation is the presence of amorphous thin films in some grain boundaries of the specimen deformed at 1200 °C (Figures 2c and d) since this was not anticipated by the general survey of the microstructure using SEM-EBSD and CTEM. In this specimen (NF1200-1) amorphous intergranular layers are much less frequent (about ten times less) than in the other specimens.

Amorphous material is usually less dense than crystalline materials, hence amorphization might be

inhibited by pressure. To verify that our observation was not specific to specimens deformed at very high stresses and crustal confining pressure, we have investigated another set of specimens deformed at 5 GPa. We have selected experiments for which GBS was established from surface microstructural characterizations⁸. These experiments involve another starting material (pure forsterite synthesized with a different process and with coarser grains: 20-100 μm), and a different experimental setup: a triaxial multi-anvil press. Since these experiments were not performed on a synchrotron beamline, the differential stress is unknown. The total strains are also not known with precision, but they are significantly larger (>10 %) than those reached using the Paterson press in axial compression. All specimens deformed at 5 GPa and below 1200 °C show pervasive amorphous grain boundaries (Figure 3). In sample M582 (deformed at 1000 °C), we found an intergranular amorphous layer containing small features (see black arrows in Figure 3a) with Fresnel contrast suggesting the presence of nanoscale defects with local atomic density different from the surrounding amorphous material (see Methods for more details). Very similar features have already been reported in metallic glasses²⁵ and were interpreted as nanoscale shear bands. At 1200 °C (M628, M639), some amorphous grain boundaries were found (see Figure 3d with insets to confirm the crystallinity of the adjacent grains), but they were much less ubiquitous than in specimens deformed at lower temperatures (Figure 3 and Extended Data Figure 4).

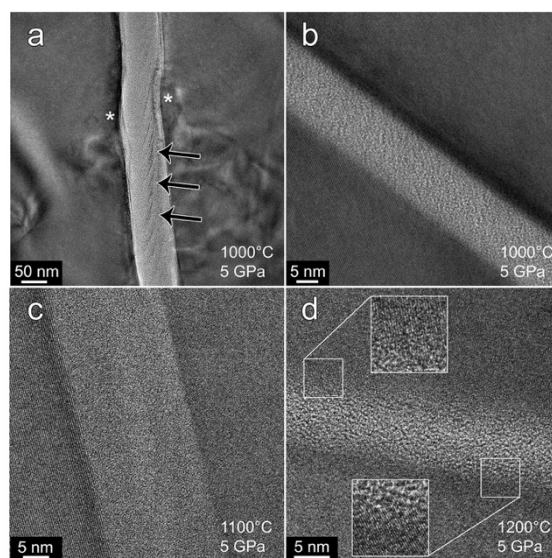


Figure 3: HRTEM of specimens deformed in the multi-anvil press a) M582 (5 GPa, 1000°C), Fresnel ($\Delta f = -920$ nm) micrograph. The stars highlight the displacement across the amorphous lamella, the black arrows indicate nanoscale shear bands. b) M640 (5 GPa, 1000 °C) c) M576 (5 GPa, 1100 °C) and d) M628 (5 GPa, 1200 °C). The TEM foils in (c) and (d) were very thin compared to the other samples and very low electron dose was used leading to more noisy images (especially in (d) where magnified insets are used to show the interface between the glassy film and the lattice).

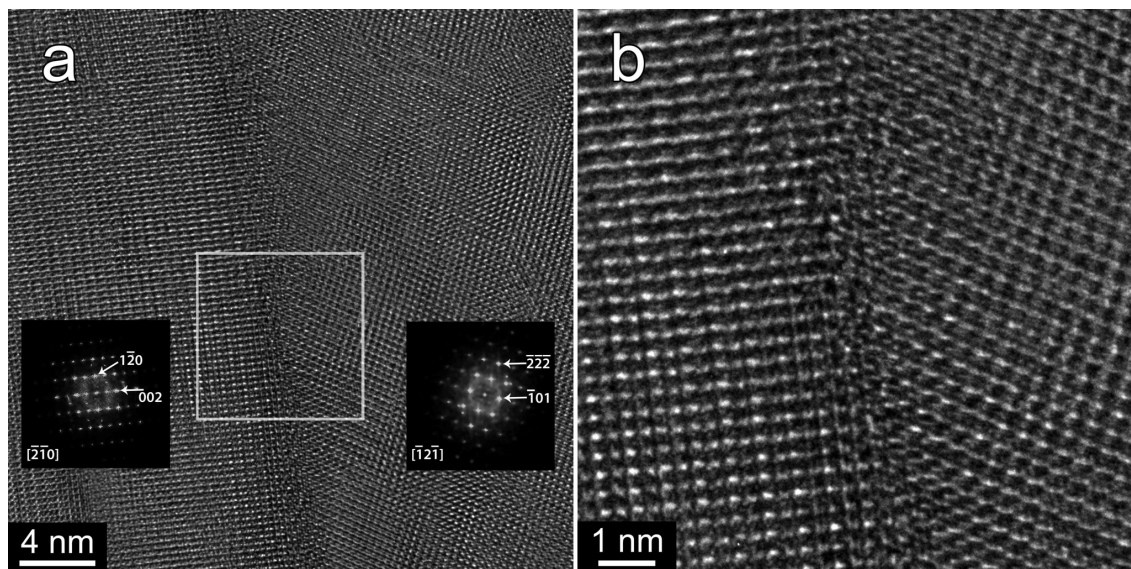


Figure 4: Starting material a) HRTEM of a grain boundary in the starting material for Paterson press experiments with FFTs from both grains and b) the enlarged image of the selected area in (a).

Intergranular amorphous layers origin. The central observation of this paper is the pervasive occurrence of amorphous layers in grain boundaries of forsterite aggregates experiencing GBS. To check that these amorphous layers are not present in the grain boundaries before deformation, we have performed an extensive characterization of the starting material prepared by Koizumi *et al.* (using their process described in 2010²⁶). Figure 4 (see also Extended Data Figure 5) shows directly abutting lattice planes at the interface between grains with no amorphous intermediate layer.

Early studies have suggested that, at high temperature, some grain boundaries could exhibit an intergranular amorphous structure²⁷, even before experimental evidence was shown that grain boundaries could exhibit a viscous behaviour²⁸. Later, this hypothesis was abandoned and models involving dislocations²⁹, or structural units¹⁵ were preferred. However, in silicon, some high-energy grain boundaries could consist in an amorphous layer³⁰, even at thermodynamic equilibrium. In our specimens, the amorphous layers do not result from melting nor represent a high-temperature equilibrium structure as suggested by Keglinski *et al.*³⁰ since the deformation experiments performed in the Paterson press were conducted at temperatures well below the sintering temperature (1260 °C) or melting temperature (1890 °C) and the starting material shows no amorphous layer before deformation (Figure 4 and Extended Data Figure 5). Another difference is the morphology and thickness of the amorphous layers. In silicon, the high-temperature equilibrium layers are very thin (1-2 nm).

In our case, the width of the amorphized layers is very variable since it depends on the local stress-strain conditions (not on temperature) and can exceed 100 nm (see Figure 1d or Figure 3c).

To understand how these amorphous layers form, one must remember that olivine does not vitrify easily and that extreme cooling rates are required to form a Mg₂SiO₄ glass from molten forsterite³¹. However, melting followed by cooling is not the exclusive route to form amorphous materials and, in our case, melting is excluded. Olivine glass was first observed from olivine shocked experimentally at 56 GPa³². Amorphous olivine can also form by static compression at room temperature in a diamond anvil cell³³. In both cases, pressure is considered as the primary driving force for amorphization although the role of deviatoric stress has also been reported³⁴. Indeed, no solid can be stressed indefinitely without undergoing some fundamental mechanical instability resulting in crystal structure collapse. In a perfect solid loaded under a uniform deformation, the corresponding stress is called the ideal shear or tensile stress, depending upon the loading mode. In forsterite, this instability threshold can be as low as 6 GPa at 0 K³⁵ (when shear is applied on (100)). This is consistent with the recent observation of amorphous shear bands in single crystal olivine micropillars compressed at ca. 4 GPa³⁶. For olivine, there is no theoretical prediction on the influence of defective regions like grain boundaries on the instability threshold. In alumina, a Σ13 [1210] pyramidal twin GB exhibits a strength reduction greater than 60 %³⁷ compared to perfect alumina³⁸. In an anisotropic crystal

as olivine, grain boundaries are loci of stress concentrations and below 1000 °C, applied stresses are in the GPa range. Hence, we consider that preferential, stress-induced amorphization at grain boundaries by mechanical instability represents a reasonable framework to interpret our observations. The fact that those amorphous layers are also observed in specimens deformed using a multi-anvil press demonstrates that amorphization of grain boundaries is not inhibited by a confining pressure up to 5 GPa.

Amorphization promotes GBS. We propose that, in olivine aggregates deformed under local high stress, grain boundaries amorphize and promote GBS. This mechanism has been demonstrated recently in ‘superhard’ B₄C ceramic³⁹. It may be common to several hard materials loaded under high stress conditions.

Amorphous grain boundaries change our appreciation of the rheology of olivine-rich rocks. Contrary to a crystal, an amorphous material is characterized by the glass transition which is a marked change of behaviour from a hard and relatively brittle state to a viscous state as the temperature is increased. The experiments at 0.3 GPa²⁰ show that the change of rheology of the grain boundaries occurs in the temperature range 1000-1100 °C. Below this temperature interval, the specimens are mostly brittle, while they are ductile above (*i.e.* at 1200 °C) with a regular dislocation creep behaviour. In the multi-anvil experiments⁸, the change of deformation regime is found in the same temperature range from the analysis of local misorientation heterogeneities (see Figure 9 in ref. 8). This behaviour is supported by our observations. At 950 °C, grain boundaries amorphize but brittle intergranular failure is observed with very little flow (see Figure 1b and Extended Data Figure 7). In specimens deformed in the multi-anvil apparatus we observe shear bands (Figure 3a and Extended Data Figure 9) in specimens deformed at 1000 °C, 5 GPa, that are a strong indication of a shear component of deformation within the amorphous layer, below the glass transition temperature (T_g) since inhomogeneous flow is characteristic of deformation in the glassy state⁴⁰. Above 1000°C, we observe pervasive evidence of ductile flow at grain boundaries (see Figures 1c, d and e and Extended Data Figure 8). In the specimens deformed in the Paterson press, where the confining pressure is low compared to the deviatoric stress, several grain boundaries are under tensile conditions leading to grain separations involving extensive flow and cavitation in the amorphous intragranular layer (see evaluation of the strain produced in the Methods section). The glass transition temperature, T_g , of forsterite³¹, 1263±10 °C, is very consistent with our observations (see further discussion in the Methods section) and accounts well for the rheology contrast observed in the mechanical data.

Implications on deep Earth processes. Under lithospheric stresses (several hundreds of MPa⁴¹⁻⁴²), local stress concentrations at grains boundaries can approach a GPa level⁴³ necessary to lead to solid-state amorphization of olivine. Such high stress conditions might be relevant to explain the brittle-plastic transition observed around the 600 °C isotherm in the oceanic lithosphere^{44,45}, as well as within the cold corner of the mantle wedge in subduction zones⁴⁶. However, the corresponding temperatures are rather low and grain boundary amorphization might only trigger a limited, hence transient, ductility⁴⁷. Considering the specific rheological properties of glasses described above, a major rheological transition is more expected when olivine-rich rocks with such amorphized grain boundaries reach the glass transition temperature. This leads us to propose a new origin for the viscosity drop at the lithosphere-asthenosphere boundary (LAB) which remains elusive and largely debated.

With increasing depths, the transition between the rigid lithosphere and the underlying convecting asthenosphere (as enunciated by Barrell⁴⁸) takes place without major mineralogical and compositional changes in mantle rocks⁴⁹. To date a clear agreement has not been reached and several thermomechanical hypotheses are debated:

- (1) a layer with high homologous temperature (relative to melting temperature T_m , but below solidus) would be enough to drastically impact the mechanisms of plastic deformation of olivine-rich aggregates⁵⁰;
- (2) the presence of a melt-rich layer at the LAB⁵¹⁻⁵³, enhanced by incorporation of volatiles in mantle rocks such as CO₂ in the asthenosphere⁵⁴ or by the fast destabilization and dehydration of the mineral pargasite⁵⁵.
- (3) by a change in dislocation activity in olivine as a function of temperature and pressure. Laboratory experiments reported that dislocation glide in olivine crystals switches from [100](0kl) to [001](hk0) below 1000 °C⁵⁶ while an increase in pressure would induce the opposite effect^{57,58}. Such a slip system switch could potentially lead to a notable change of viscosity. Nevertheless, the magnitude of this effect is difficult to assess as experimental data need to be extrapolated to asthenospheric strain rates (10^{-14} - 10^{-18} s⁻¹) and low stresses (<50 MPa). Also, mantle-derived peridotites are only available from the lithosphere and cannot help constraining a full lithosphere-asthenosphere textural transition. The current database only reports abundant [100](0kl) textures in peridotites for the lithosphere⁵⁹.

The only consensus, derived from large scale numerical models, is the satisfying match of the viscosity drop at the LAB with a layer at 1027-1127 °C (1300-1400 K) isotherms⁶⁰⁻⁶². Assuming that the origin of the LAB is linked to the rheology of olivine-rich

rocks, our results suggests a different mechanism which is controlled by the onset of ductility at amorphized grain boundaries. Once the glass transition temperature of olivine glass is reached, amorphized grain boundary flow, enhancing sliding and leading to a marked viscosity drop of the mantle rocks. The consistency between the isotherm defining the LAB and the glass transition temperature of olivine glass supports our model. Our results infer a change of paradigm since until now the rheology of rocks was considered to be exclusively dependent on the physics of crystal defects whereas we should draw our attention to the mechanical properties of olivine glass. At greater depths, in the asthenosphere, *i.e.* after the viscosity drop, the stresses (<10 MPa) are too low to trigger amorphization of grain boundaries. Since temperatures are also higher than in the lithosphere, one can expect that, in the asthenosphere, other mechanisms operate at the grain boundaries involving either ionic diffusion or activation of specific defects (disconnections, disclinations). Dedicated experiments and modelling are needed to define more precisely the thermomechanical fields of activation of these different mechanisms.

References

1. Carter, N.L., Ave'Lallemant, H.G. High Temperature flow of dunite and peridotite. *Geol. Soc. America. Bull.* 81, 2181–2202 (1970).
2. Kocks, U.F., Argon, A.S. and Ashby, M.F. 4. Thermal activation. In: U.F. Kocks, A.S. Argon and M.F. Ashby (Editors), Thermodynamics and kinetics of slip, Pergamon Press, pp. 110-271 (1975).
3. Ashby, M.F. and Verrall, R.A. Micromechanisms of flow and fracture, and their relevance to the rheology of the upper mantle. *Phil. Trans. R. Soc. Lond. A.* 288, 59-95 (1977).
4. Marquardt, K. & Faul, U.K. The structure and composition of olivine grain boundaries: 40 years of studies, status and current developments. *Phys Chem Minerals*, 45, 139-172 (2018). <https://doi.org/10.1007/s00269-017-0935-9>
5. Hirth, G. & Kohlstedt, D.L. Experimental constraints on the dynamics of the partially molten upper mantle: 2. Deformation in the dislocation creep regime, *J. Geophys. Res.* 100, 15441–15449 (1995)
6. Warren, J. M. & Hirth, G. Grain size sensitive deformation mechanisms in naturally deformed peridotites, *Earth Planet. Sci. Lett.*, 248(1–2), 438–450 (2006) doi:10.1016/j.epsl.2006.06.006.
7. Maruyama, G. & Hiraga, T. Grain- to multiple-grain-scale deformation processes during diffusion creep of forsterite + diopside aggregate: 1. Direct observations. *J. Geophys. Res. Solid Earth* 122, 5890–5915 (2017) doi:10.1002/2017JB014254.
8. Bollinger C., Marquardt, K., & Ferreira F. Intragranular plasticity vs. grain boundary sliding (GBS) in forsterite: microstructural evidence at high pressures (3.5-5.0 GPa). *Am. Mineral.* 104 (2), 220-231 (2019)
9. Ohuchi, T., Kawazoe, T., Higo, Y., Funakoshi, K.-i., Suzuki, A., Kikegawa, T., & Irifune, T. Dislocation-accommodated grain boundary sliding as the major deformation mechanism of olivine in the Earth's upper mantle. *Sci. Adv.* 1, e1500360 (2015).
10. Burnley, P.C. & Kaboli, S. Elastic plastic self-consistent (EPSC) modeling of San Carlos olivine deformed in a D-DIA apparatus. *Am. Mineral.* 104, 276–281 (2019)
11. Ashby, M. F. Boundary defects and atomistic aspects of boundary sliding and diffusional creep. *Surf. Sci.* 31, 498–542. (1972) doi:10.1016/0039-6028(72)90273-7
12. Raj, R., & Ashby, M. F. On grain boundary sliding and diffusional creep, *Metall. Trans.*, 2, 1113– 1127 (1971)
13. Cooper, R.F. Seismic Wave Attenuation: Energy Dissipation in Viscoelastic Crystalline Solids. In: Plastic Deformation of Minerals and Rocks; Reviews in Mineralogy and Geochemistry, Publisher: Mineralogical Society of America. Editors: S.-i. Karato and H.-R. Wenk. 51(9), 253-290 (2002)
14. Jackson, I, Faul, U & Skelton, R. Elastically accommodated grain-boundary sliding: New insights from experiment and modeling, *Phys. Earth Planet. Int.* 228, 203-210 (2014)
15. Bollmann, W. Crystal defects and Crystalline Interfaces (Springer, Berlin, Germany) (1970)
16. Hirth, J.P., Hirth, G. & Wang, J., Disclinations and disconnections in minerals and metals *Proc. Nat. Acad. Sci.* 117, 196-204 (2020) doi: 10.1073/pnas.1915140117
17. Volterra, V. Sur l'équilibre des corps élastiques multiples connexes. *Ann. Sci. Ecol. Norm. Sup.* III 24, 401–517, (1907)
18. Taupin, V., Capolungo, L., Fressengeas, C., Das, A., & Upadhyay, M., Grain boundary modeling using an elasto-plastic theory of dislocation and disclination fields. *J. Mech. Phys. Solids* 61 (2), 370-384 (2013).
19. Cordier, P., Demouchy, S., Beausir, B., Taupin, V., Barou, F. & Fressengeas C. Disclinations provide the missing mechanism for deforming olivine-rich rocks in the mantle. *Nature*, 507, 51–56, (2014) doi : 10.1038/nature13043
20. Gasc, J., Demouchy, S., Barou, F., Koizumi, S. & Cordier, P. Creep mechanisms in the lithospheric mantle Inferred from deformation of iron-free forsterite aggregates at 900-1200 °C. *Tectonophysics*, 761, 16-30, (2019) <https://doi.org/10.1016/j.tecto.2019.04.009>
21. Watanabe, T., Obata, M., & Karashima, S. High Temperature Intergranular Fracture Enhanced by Grain Boundary Migration in Alpha Iron-Tin Alloy. Strength of Metals and Alloys (ICSMA 6). Proceedings of the 6th International Conference, Melbourne, Australia, 671-676 (1982)
22. Schneibel, J.H., White, C.L. & Padgett, R.A. The Influence of Traces of Sb and Zr on Creep and Creep Fracture of Ni-20% Cr. Strength of Metals and Alloys (ICSMA 6) Proceedings of the 6th

- International Conference, Melbourne, Australia, 649-654 (1982)
23. Masuda, H., Tobe, H., Sato, E., Sugino, Y. & Ukai, S. Two-dimensional grain boundary sliding and mantle dislocation accommodation in ODS ferritic steel. *Acta Mater.* 120, 205e215 (2016)
 24. Dupas-Bruzek, C., Tingle, T., Green II, H., Doukhan, N., & Doukhan, J.C. The rheology of olivine and spinel magnesium germanate (Mg₂GeO₄): TEM study of the defect microstructures. *Phys. Chem. Minerals*, 25(7), 508-509 (1998)
 25. Rösner, H., Peterlechner, M., Kübel, C., Schmidt, V., and Wilde, G. Density changes in shear bands of a metallic glass determined by correlative analytical transmission electron microscopy. *Ultramicroscopy*, 142, 1-9 (2014) <https://doi.org/10.1016/j.ultramicro.2014.03.006>
 26. Koizumi, S., Hiraga, T., Tachibana, C., Tasaka, M., Miyazaki, T., Kobayashi, T., Takamasa, A., Ohashi, N., & Sano, S. Synthesis of highly dense and fine-grained aggregates of mantle composites by vacuum sintering of nano-sized mineral powders. *Phys. Chem. Minerals* 37, 505-518. (2010)
 27. Rosenhain, W. & Ewen, D. Intercrystalline cohesion in metals. *J. Inst. Metals* 8, 149–173 (1912).
 28. Ke, T.S. Experimental Evidence of the Viscous Behavior of Grain Boundaries in Metals. *Phys. Rev.* 71(8), 533-546 (1947)
 29. Read, W.T. & Shockley, W. Dislocation models of crystal grain boundaries. *Phys. Rev.* 78, 275–289 (1950)
 30. Koblinski, P., Wolf, D., Phillpot, S. R. & Gleiter, H. Thermodynamic Criterion for the Stability of Amorphous Intergranular Films in Covalent Materials *Phys. Rev. Lett.* 77, 2965–2968 (1996).
 31. Richet, P., Leclerc, F. & Benoist, L. Melting of forsterite and spinel, with implications for the glass transition of Mg₂SiO₄ liquid, *Geophys. Res. Lett.* 20, 1675–1678 (1993)
 32. Jeanloz, R., Ahrens, T.J., Lally, J.S., Nord, G.L., Christie, J.M. & Heuer, A.H. Shock-Produced Olivine Glass: First Observation. *Science*, 197(4302), 457-459 (1977)
 33. Lacam, A., Madon, M. & Poirier, J.P. Olivine glass and spinel formed in a diamond anvil high-pressure cell. *Nature*, 288, 155-157 (1980)
 34. Andraut, D., Bouhifd, M.A., Itie, J.P., & Richet, P. Compression and amorphization of (Mg,Fe)₂SiO₄ olivines: An X-ray diffraction study up to 70 GPa. *Phys. Chem. Minerals*, 22, 99–107 (1995)
 35. Gouriet, K., Carrez, P. & Cordier, P. Ultimate mechanical properties of forsterite. *Minerals*, 9, 787 (2019) <http://dx.doi.org/10.3390/min9120787>
 36. Kranjc, K., Thind, A.S., Borisevich, A.Y., Mishra, R., Flores, K.M. & Skemer, P. Amorphisation and plasticity of olivine during low temperature micropillar deformation experiments. *J. Geophys. Res. Solid Earth* 125, e2019JB019242. <https://doi.org/10.1029/2019JB019242>
 37. Nakamura, K., Mizoguchi, T., Shibata, N., Matsunaga, K., Yamamoto, T. & Ikuhara, Y. First-principles study of grain boundary sliding in α -Al₂O₃. *Phys. Rev. B* 75, 184109 (2007)
 38. Zhang, Z., Fu, Z., Zhang, R., Legut, D. & Guo, H. Anomalous mechanical strengths and shear deformation paths of Al₂O₃ polymorphs with high iconicity. *RSC Advances*. 6(16), 12885 (2016) doi: 10.1039/C5RA25796D
 39. Guo, D., Song, S. Luo, R., Goddard III. W.A., Chen, M., Reddy, K.M. & An, Q. Grain boundary sliding and amorphization are responsible for the reverse Hall–Petch relation in superhard nanocrystalline boron carbide. *Phys. Rev. Lett.*, 121, 145504, (2018) doi:10.1103/PhysRevLett.121.145504
 40. Schuh, C.A., Hufnagel, T.C. & Ramamurty, U. Mechanical behavior of amorphous alloys. *Acta Mater.* 55, 4067-4109 (2007) doi:10.1016/j.actamat.2007.01.052
 41. Zoback, M.L., & Zoback, M. Lithosphere stress and deformation. Treatise on Geophysics. 6, 253-273 (2007) <https://doi.org/10.1016/B978-044452748-6.00105-X>
 42. Boioli, F., Tommasi, A., Cordier, P., Demouchy, S. & Mussi, A. Low steady-state stresses in the cold lithospheric mantle inferred from dislocation dynamics models of dislocation creep in olivine. *Earth Planet. Sci. Lett.* 432, 232–242 (2015) <http://dx.doi.org/10.1016/j.epsl.2015.10.012>
 43. Wallis, D., Hansen, L.N., Britton, T.B., Wilkinson, A.J. High-Angular Resolution Electron Backscatter Diffraction as a New Tool for Mapping Lattice Distortion in Geological Minerals. *J. Geophys. Res. Solid Earth* 124, 6337–6358. (2019) doi:10.1029/2019JB017867
 44. McKenzie, D., Jackson, J., Priestley, K. Thermal structure of oceanic and continental lithosphere. *Earth Planet. Sci. Lett.* 233, 337-349 (2005) doi:10.1016/j.epsl.2005.02.005
 45. Watts, A.B., Zhong, S. Observations of flexure and the rheology of oceanic lithosphere. *Geophys. J. Int.* 142, 855-875 (2000)
 46. Kneller, E.A., van Keken, P.E., Karato, S.-I, Park, J. B-type olivine fabric in the mantle wedge: Insights from high-resolution non-Newtonian subduction zone models. *Earth Planet. Sci. Lett.* 237, 781-797 (2005) doi:10.1016/j.epsl.2005.06.049
 47. Pollitz, F.F. Lithosphere and shallow asthenosphere rheology from observations of post-earthquake relaxation. *Phys. Earth Planet. Int.* 293, 106271 (2019) doi: 10.1016/j.pepi.2019.106271
 48. Barrell, J. The strength of the Earth's crust. *J. Geology* 14, 28–48 (1914)
 49. O'Reilly, S.Y., Griffin, W.L. The continental lithosphere–asthenosphere boundary: Can we sample it? *Lithos* 120, 1–13. (2010) doi:10.1016/j.lithos.2010.03.016
 50. Wang, Q. Homologous temperature of olivine: Implications for creep of the upper mantle and fabric transitions in olivine. *Sci. China Earth Sci.* 59, 1138–1156 (2016) doi:10.1007/s11430-016-5310-z
 51. Sakamaki, T. Ponded melt at the boundary between the lithosphere and asthenosphere *Nature Geoscience.* 6, 1041–1044 (2013) doi:10.1038/ngeo1987
 52. Kawakatsu, H., Kumar, P., Takei, Y., Shinohara, M., Kanazawa, T., Araki, E., Suyehiro, K., 2009. Seismic Evidence for Sharp Lithosphere-

- Asthenosphere Boundaries of Oceanic Plate, *Science*, 324, 499-502 (2009)
53. Naif, S., Key, K., Constable, S., Evans, R.L. Melt-rich channel observed at the lithosphere-asthenosphere boundary. *Nature* 495, 356–359 (2013) doi:10.1038/nature11939
 54. Gaillard, F., Malki, M., Iacono-Marziano, G., Pichavant, M., Scaillet, B. Carbonatite melts and electrical conductivity in the asthenosphere. *Science*, 322, 1363-1365 (2008)
 55. Green, D.H., Hibberson, W.O., Kovács, I., Rosenthal, A. Water and its influence on the lithosphere-asthenosphere boundary. *Nature* 467, 448–451 (2010) doi:10.1038/nature09369
 56. Raleigh, C.B. Mechanism of plastic deformation of olivine. *J. Geophys. Res.* 73, 5391–5406 (1968)
 57. Couvy, H., Frost, D. J., Heidelbach, F., Nyilas, K., Ungár, T., Mackwell, S., & Cordier, P. Shear deformation experiments of forsterite at 11 GPa - 1400 °C in the multianvil apparatus. *Eur. J. Mineral.* 16 (6), 877-889 (2004)
 58. Mainprice, D., Tommasi, A., Couvy, H., Cordier, P., & Frost, D.J. Pressure sensitivity of olivine slip systems and seismic anisotropy of Earth's upper mantle. *Nature* 433, 731–733 (2005)
 59. Ben Ismail, W. & Mainprice, D. An olivine fabric database: an overview of upper mantle fabrics and seismic anisotropy. *Tectonophysics* 296, 145–157 (1998)
 60. Pollack, H.N., & Chapman, D.S. On the regional variation of heat flow, geotherms, and lithospheric thickness. *Tectonophysics*. 38, 279-296 (1977).
 61. Eaton, D.W., Darbyshire, F., Evans, R.L., Grütter, H., Jones, A.G., Yuan, X. The elusive lithosphere-asthenosphere boundary (LAB) beneath cratons. *Lithos* 109, 1–22. (2009) doi:10.1016/j.lithos.2008.05.009
 62. Fischer, K.M., Ford, H.A., Abt, D.L. & Rychert, C.A.. The Lithosphere-Asthenosphere Boundary. *Annu. Rev. Earth Planet. Sci.* 38, 551–575 (2010) doi:10.1146/annurev-earth-040809-152438

Acknowledgements We acknowledge funding from the European Research Council (ERC) under the European Union's Horizon 2020 research and innovation programme under grant agreement No 787198 – TimeMan. The TEM facility in Lille (France) is supported by the Conseil Régional du Nord-Pas de Calais, and the European Regional Development Fund (ERDF). H. Idrissi is mandated by the Belgian National Fund for Scientific Research (FSR-FNRS). This study was also partially supported by the Agence Nationale de la Recherche through the ANR INDIGO grant (ANR-14-CE33-0011) for the low-pressure experiments, by the German Alexander von Humboldt Foundation and the Free State of Bavaria for the high-pressure experiments, and by the JSPS KAKENHI grant (number JP18K03799) to Sanae Koizumi and cooperative research program of the Earthquake Research Institute, Tokyo (Japan).

Author contribution The study was designed by P.C. and co-supervised by P.C. and H.I. S.K. prepared the starting material nanoforsterite. C.B. prepared the coarse-grained forsterite. J.G., S.D. and C.B. performed the deformation experiments. V.S., H.I., A.M., D.S. and P.C. performed and analysed the TEM investigations. All the authors discussed and analysed the data. P.C., H. I. and S.D. wrote the paper with contribution of all authors.

The authors declare no competing interests.

Online methods section:

Deformation of forsterite fine-grained aggregates in the Paterson press²⁰

Starting material: forsterite and enstatite nano-sized powders were synthesized from colloidal SiO₂ (average particle size: 30 nm, purity: 99.9%) and Mg(OH) (average particle size: 50 nm, purity: 99.98%) at the Earthquake Research Institute (Tokyo, Japan), following the sintering method detailed in Koizumi *et al.*²⁶. After cold-pressing the nano-powder mixture was annealed under vacuum at 1260 °C for 2-3 hours. This yields a very dense polycrystalline solid with porosity well below 1% and melt-free grain boundaries (Fig. 1). This type of high-quality sintered polycrystal is now a standard for deformation studies^{7, 63, 64}. The average grain size is 2.8 μm and the aggregate contains between 2 and 3 % of orthoenstatite grains (grain size 1.8 μm), which are homogeneously distributed. Orthoenstatite is not stable under 300 MPa above 1000 °C and transforms into proto-enstatite, but the mineral remains far from its melting point (1550-1600 °C^{65, 66}). The EBSD maps of the starting material shows equilibrated textures, with ubiquitous triple junctions and straight grain boundaries^{20, 26}. Cylinders of nano forsterite+enstatite were then cut, polished and reshaped as cylinders for the deformation experiments.

Deformation experiments: experiments NF950-1, NF1050-1 and NF1200-1 from Gasc *et al.*²⁰ were carried out using a Paterson press at Geosciences Montpellier (University of Montpellier, France), which is a servo-controlled high-resolution gas-medium (argon) high-pressure high-temperature deformation apparatus^{67,68}. Deformation experiments were performed under a confining pressure of 300±5 MPa, at temperatures between 900 and 1200 °C, and at a constant displacement rate. The assembly is rather standard: the samples were placed between Al₂O₃ and Mg-doped Zr₂O₃ pistons and surrounded with soft metal sleeves⁵⁰. The nature of the soft metal sleeve is a function of the temperature of each experiment (*i.e.*, silver, copper and nickel sleeves were used for experiments at <1000 °C, 1000-1050 °C, and >1050 °C, respectively). The constant displacement rate was set based on the initial length of the polycrystalline cylinder to yield a constant strain rate of 10⁻⁵ s⁻¹. Steady-state was not reached for every deformation experiments and finite strain ranged from 3.1 to 10.3 % (Table 1). The furnace was pre-calibrated for each targeted temperature and was monitored with a commercial N-type thermocouple (Nicrosil-Nisil). The temperature gradients along the hot zone (2 cm) did not vary by more than 5 °C. Isostatic quenching of the samples is achieved by a manual decrease of the furnace power, at a rate of 100 °C/min down to 400 °C and then at 40 °C/min down to 150 °C, which is fast enough to limit relaxation and to ensure preservation of the deformation microstructures⁶⁹. The decrease in temperature induces

a decrease in confining pressure (typically 65 MPa as the gas condensed) as well as in applied stress before the load is completely removed. In average, quench takes 14 to 16 minutes, which yields a characteristic distance of Si diffusion in forsterite ~ 0.6 nm for a typical decrease in temperature (NB: using the self-diffusion of Si in pure forsterite⁷⁰).

Deformation of forsterite aggregates in the multi-anvil press⁸

Starting material: forsterite was synthesized from MgO (99.99% purity with 1.5 μm grain size) and SiO₂ (99.99% purity with ~ 150 μm grain size) oxide powders from ChemPur. The powders were mixed together in an alumina mortar with ethanol. MgO was added in excess to avoid the formation of enstatite during synthesis since MgO powders easily captures humidity from the air during weighing. This mixture was then sintered in a furnace at 1500 °C for at least 12 h and ground again. This procedure was repeated until the evolution to 100% forsterite was demonstrated with X-ray diffraction. Then, the MgO in excess was removed using 10% acetic acid at 60 °C. The resulting forsterite powder was then sent to PNF2 (CIRIMAT, Toulouse, France) to be aggregated and densified by flash sintering⁷¹. This resulted in pellets 2 cm of thick and 4 cm in diameter. The starting microstructure of the aggregate has been analysed with a Scanning Electron Microscope (SEM) and EBSD before deformation. The grain size was between 20 and 100 μm with a lognormal distribution. The grains are randomly orientated with straight grain boundaries.

Deformation experiments: experiments M576, M582, M628 and M640 from Bollinger *et al.*⁸ were carried out using a six-ram MAVO press⁷² at the Bayerisches Geoinstitut (Bayreuth, Germany). The specimens are inserted in a molybdenum capsule and placed between alumina pistons. The assemblies containing a graphite furnace are placed between the six second-stage anvils. The pressurization is followed by power-controlled heating. After reaching the desired P/T conditions, annealing was performed for ~ 30 min before deformation is achieved by pushing one pair of rams forward by injecting oil at a rate corresponding to an applied strain rate of $\sim 2 \times 10^{-5} \text{ s}^{-1}$. Another pair of rams remains fixed as the last one was pushed backward in response to maintain a constant confining pressure while the sample was deformed in pure shear geometry. In this experiment stress is not measured. The final strain (Table 1) is estimated from the displacements of the ram. After deformation, the specimen is quenched under pressure to ca. 100 °C in a few seconds by turning off the power to the furnace. Quench rates are fast due to the small size of the pressure cell and the large volume of metal around it.

Transmission electron microscopy

The specimens were first mechanically polished down to a thickness of 30 μm . In order to reach electron transparency, the sample foils mounted on Mo or Cu grids were Ar-ion sputtered with a Gatan® DuoMill™ model 600. In case of specimens deformed in the multianvil press, a final polishing was performed during a few minutes at grazing angle with a Gatan® PIPS™ II model 695. A thin carbon layer has been deposited to ensure electron conduction on the thin-foils. CTEM as well as STEM-EDX observations were carried out in Lille using a FEI® Tecnai G²-20 twin microscope operating at 200 kV equipped with a LaB₆ filament and using a double tilt sample-holder. HRTEM micrographs were acquired in Antwerp using an aberration-corrected cubed FEI-Titan electron microscope at an operating voltage of 300 kV. Fresnel contrast was used to increase the contrast of the small shear bands in Figure 3a. This technique is commonly used in TEM to reveal regions with different atomic density, bubbles or voids in solids by acquiring overfocused and underfocused images. Such behaviour is very useful here because shear bands exhibits slight changes of atomic density (from 1% to 10%) between sheared zones and the surrounding amorphous matrix²⁵.

Local strain measurements

The strain produced by grain boundary sliding can be measured from the transverse displacement u across the boundary from the expression⁷³:

$$\varepsilon_{GBS} = \phi \frac{u}{L}$$

Where ϕ is a geometrical constant close to 1.5⁷⁴ and L is the (average) grain size.

In Figure 1d or Extended Data Figure 8b, the amorphous layer formed between two grains which are pulled apart (horizontal displacement on the picture). In Extended Data Figure 8b the amorphous boundary is 190 nm wide. Since an amorphous silicate is ca. 20% less dense than the crystalline form, the formation of this layer corresponds to a displacement of 12 nm ($\Delta V/V \approx 3 \cdot \Delta l/l$) which corresponds to a 0.6 % local strain (considering the size of the grain on the right).

The contribution of shear to sliding is more difficult to demonstrate if no markers are available. One occurrence is illustrated in Figure 3a on the M582 specimen deformed at 5 GPa, 1000 °C. Shear deformation is evidenced by two markers. One is the observation of nanoscale shear bands. The second one is given by the displacements of the two crystal-amorphous boundaries highlighted by the white asterisks. These two independent markers give a consistent value of ca. 50 nm for the shear component. Considering that in this specimen, the grain size is in the range 20-100 μm , one can bracket the shear component of the strain produced at this grain boundary: $0.075\% < \varepsilon_{GBS} < 0.375\%$. The tensile component of strain across

the boundary is approximately three times smaller. The smallness of this value is related to the magnification which can only capture small displacements. However, given the grain size and the size of the specimen, such a contribution supposed to be spread homogeneously among all boundaries would lead to $1.5\% < \epsilon_{\text{plastic strain}}^{\text{total}} < 35\%$. This is a rough estimate. Nevertheless, it demonstrates that the observed microstructures show strain contributions that are of the same order of magnitude as those observed from macroscopic strains. A second occurrence is presented in Extended Data Figure 9 which shows evidence for grain boundary sliding from the displacements of the crystal-amorphous boundaries (see markers), and also from internal markers in the form of shear bands in the amorphous layer (black arrows). All evidence gives a consistent value for the displacement of 135 nm (leading to shear estimates more than twice larger than the one reported above). Note that, due to the shape of the grain, the displacement which is almost pure shear sliding in the upper part of the grain boundary transforms into opening in the central part.

Glass transition temperature of intergranular thin films

The T_g of amorphous olivine may depend on the glass structure (configurational entropy), but also on the dimensions. The determination of Richet *et al.*³¹ corresponds to a bulk material whereas in our case, thin intergranular amorphous films are constrained between two grains. In polymers, the T_g of ultrathin films deviates significantly from the one of the bulk. As an example, for polystyrene with a bulk $T_g \approx 100^\circ\text{C}$, $\Delta T_g = -25^\circ\text{C}$ for a 13 nm thick film on silicon oxide⁷⁵.

Data Availability

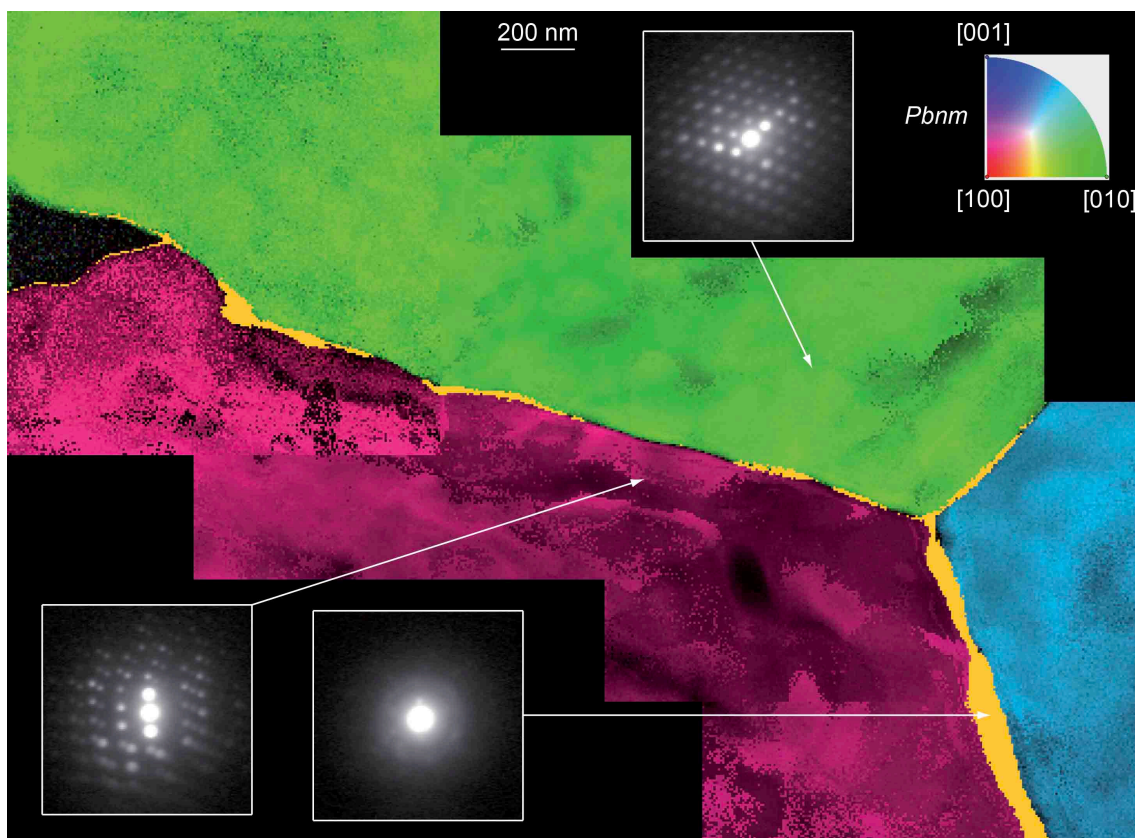
The data of this manuscript are the micrographs and are present in the figures. Original files are available at <https://doi.org/10.5281/zenodo.3893661>

References cited in the online Methods section

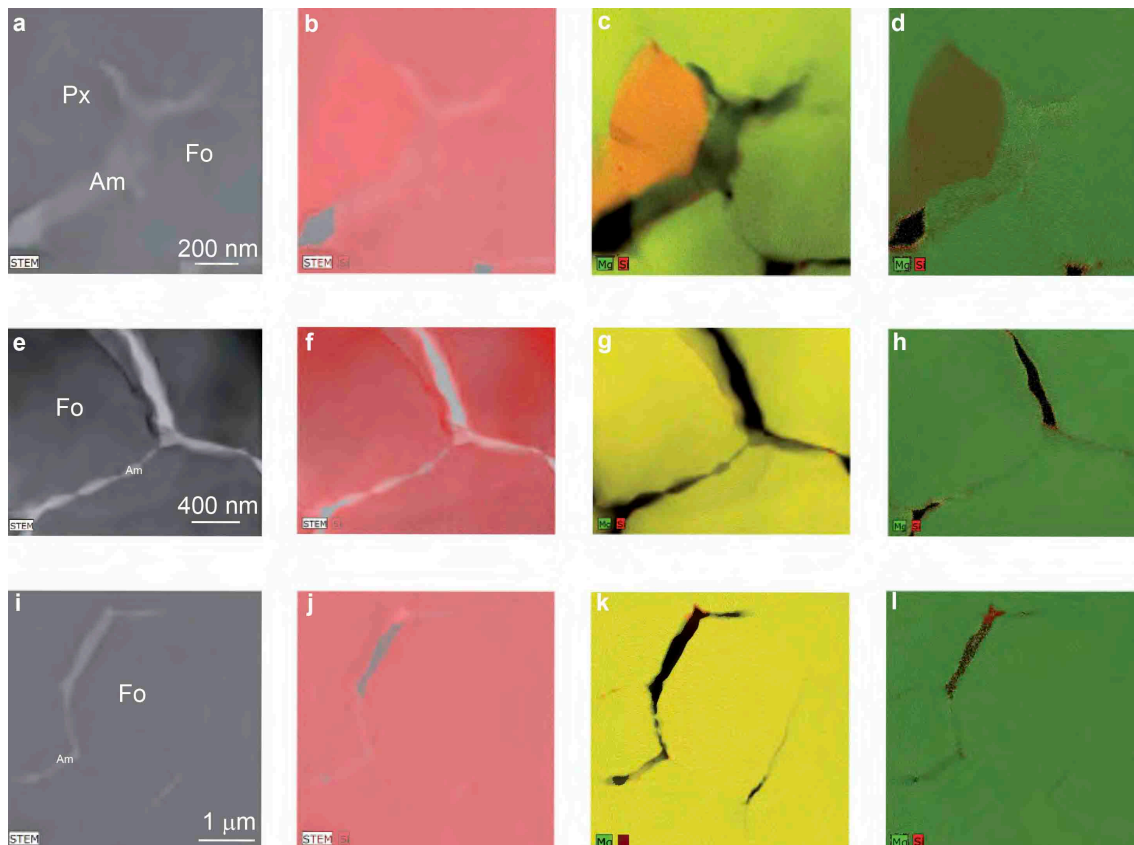
63. Hiraga, T., Miyazaki, T., Tasaka, M., Yoshida, H. Mantle superplasticity and its self-made demise. *Nature* 468, 1091–1094 (2011) doi:10.1038/nature09685

64. Tasaka, M., Hiraga, T. & Zimmerman, M.E. Influence of mineral fraction on the rheological properties of forsterite plus enstatite during grain-size-sensitive creep: 2. Deformation experiments. *J. Geophys. Res.* 118, 3991–4012 (2013)
65. Gasparik T. Phase diagrams for geologists, an atlas of Earth Interior, Springer-Verlag, Berlin-Heidelberg, p. 462. (2003)
66. Chen C.-H, Presnall, D. The system $\text{Mg}_2\text{SiO}_4\text{-SiO}_2$ at pressure up to 25 kilobars. *Am. Min.*, 60, 5-6, 398-406 (1975)
67. Paterson, M.S. Rock deformation experimentation, in: Duda, A., et al (Eds.), *The Brittle-Ductile Transition in Rocks: the Head Volume*. Geophys. Monogr. Ser., AGU, Washington D.C., pp. 187–194 (1990)
68. Thieme, M., Demouchy, S., Mainprice, D., Barou, F. & Cordier, P. Stress evolution and associated microstructure during transient creep of olivine at 1000–1200 °C. *Phys. Earth Planet. Int.* 278, 34–46 (2018) doi:10.1016/j.pepi.2018.03.002
69. Mei, S. & Kohlstedt, D.L. Influence of water on the plastic deformation of olivine aggregates: 1. Diffusion creep regime. *J. Geophys. Res.* 105, 21–457–21–469 (2000)
70. Fei, H., Hegoda, C., Yamazaki, D., W. M. Yurimoto, H., Shcheka, S. & Katsura, T. High silicon self-diffusion coefficient in anhydrous forsterite. *Earth Planet. Sci. Lett.*, 345, 95 (2012)
71. Guignard, J., Bystricky, M., & Béjina, F. Dense fine-grained aggregates prepared by spark plasma sintering (SPS), an original technique in experimental petrology. *Eur. J. Mineral.* 23, 323–331 (2011)
72. Manthilake, M. A.G.M., Walter, N., & Frost, D.J. A new multi-anvil press employing six independently acting 8 MN hydraulic rams. *High Pressure Research*, 32-2, 195–207 (2012)
73. Vastava, R.B. & Langdon, T.G. An investigation of intercrystalline and interphase boundary sliding in the superplastic Pb-62% Sn eutectic. *Acta Metall.* 27, 251–257 (1979) [https://doi.org/10.1016/0001-6160\(79\)90103-2](https://doi.org/10.1016/0001-6160(79)90103-2)
74. Langdon, T.G. The Effect of Surface Configuration on Grain Boundary Sliding. *Metall. Trans.* 3, 797–801 (1972). <https://doi.org/10.1007/BF02647651>
75. Fryer, D.S., Nealey, P.F. & de Pablo, J.J. Thermal Probe Measurements of the Glass Transition Temperature for Ultrathin Polymer Films as a Function of Thickness. *Macromolecules*, 33(17), 6439–6447 (2000) <https://doi.org/10.1021/ma0003349>

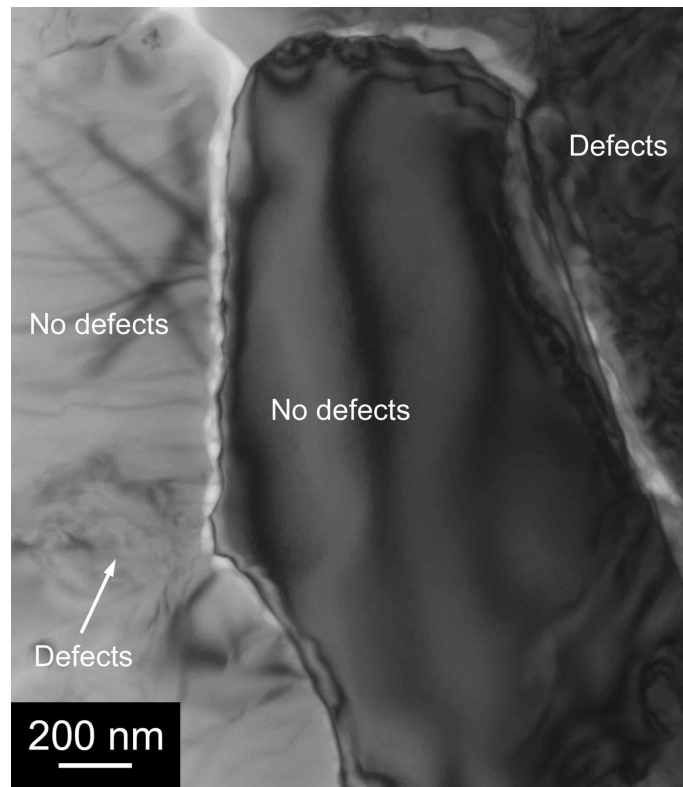
Extended data figures



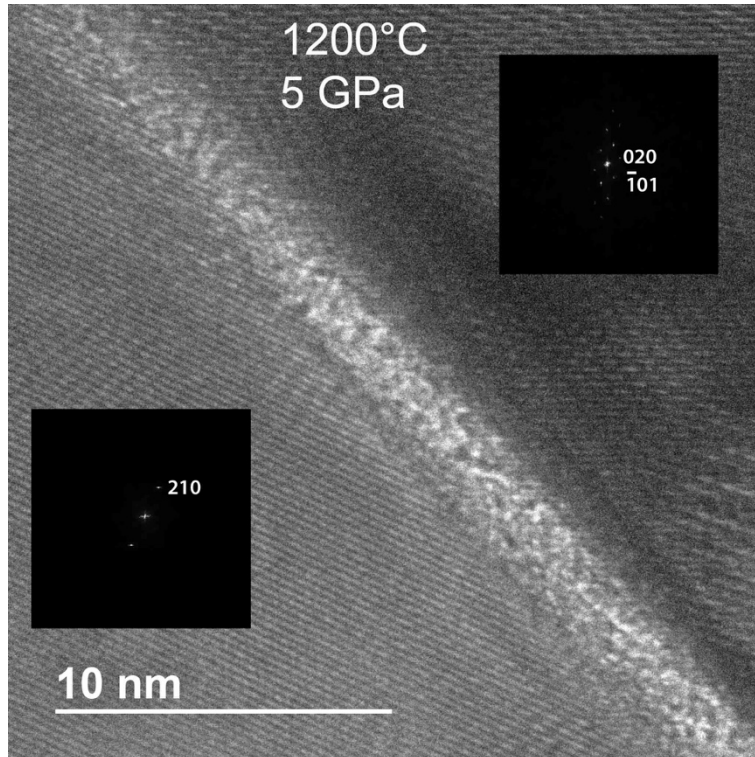
Extended Data Figure 1: Orientation map obtained in TEM using the ACOM-TEM method. The spatial resolution is 6 nm. The three crystalline grains (red, blue and green) have been indexed with forsterite ($Pbnm$ space group, two diffraction patterns are provided). The figure is the combination of the reliability map (darker areas being less well indexed) with the inverse pole figure along the vertical direction (using the color code shown in the insert). In between the grains is an amorphous phase which has been represented in orange with no relation with the color code of forsterite orientations



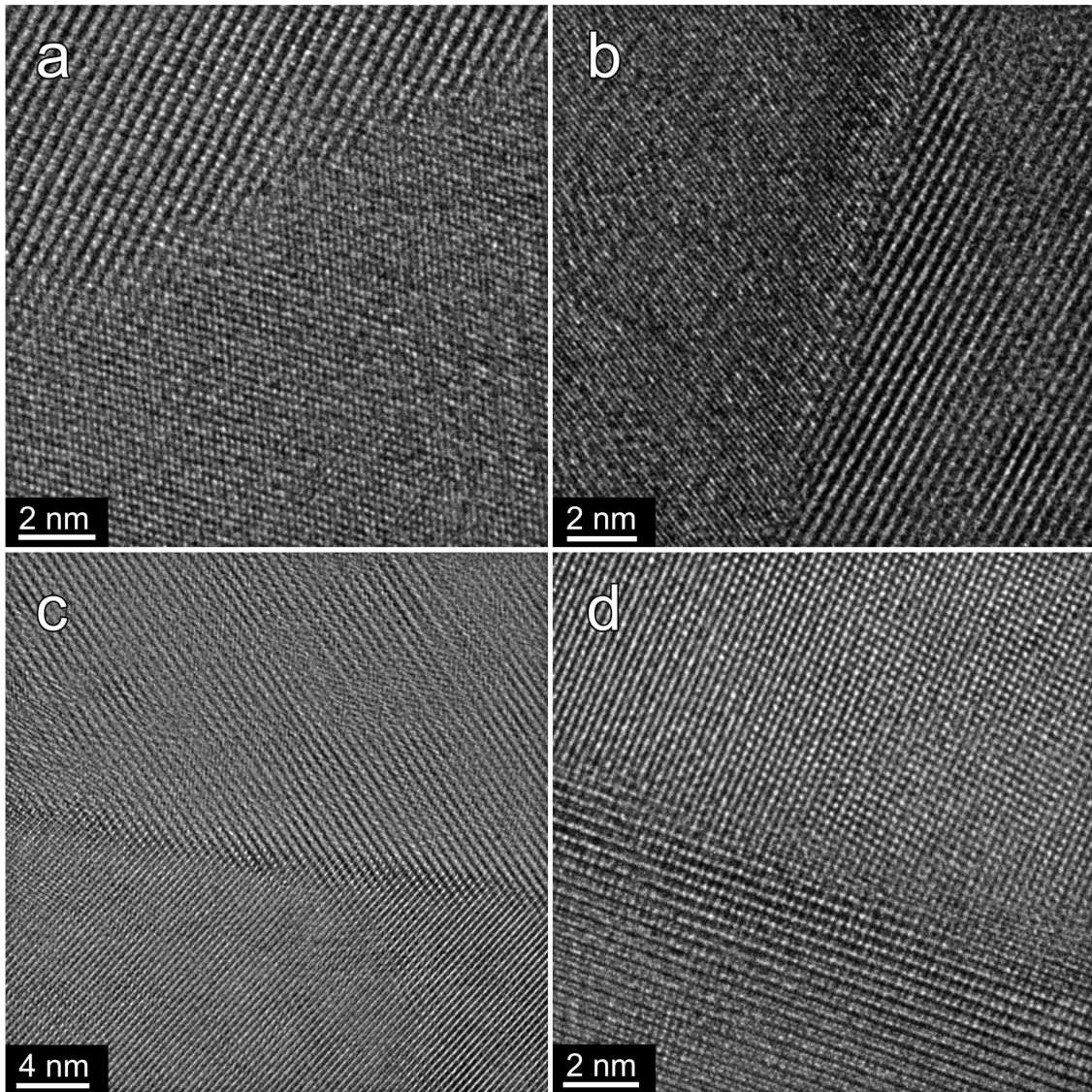
Extended Data Figure 2: Chemical analysis (STEM-EDX) of the intergranular amorphous phase in specimen NF1050-1. a, e, i) STEM-BF images. b, f, j) Combined STEM and chemical Si maps showing the presence of silicon in the amorphous phase. c, g, k) Combined Si and Mg maps showing continuity of composition (Mg, Si) between the forsterite grains and the amorphous phase. The Mg enrichment of the pyroxene grain appears. d, h, i) Combined Si and Mg maps after quantification performed using the method of Van Cappellen and Doukhan (1994) on the basis of the stoichiometric oxides, where standard specimens were used to obtain the k-factors (Cliff & Lorimer, 1975) of Mg and Si. In d) where the amorphous layer is larger, the thickness correction can be done accurately showing that the amorphous phase has exactly the composition of forsterite. In h) and i), the amorphous layers are smaller, thinner, with non-homogeneous thicknesses rendering quantification less reliable so the local deviations observed in the thinnest regions should be taken with care.



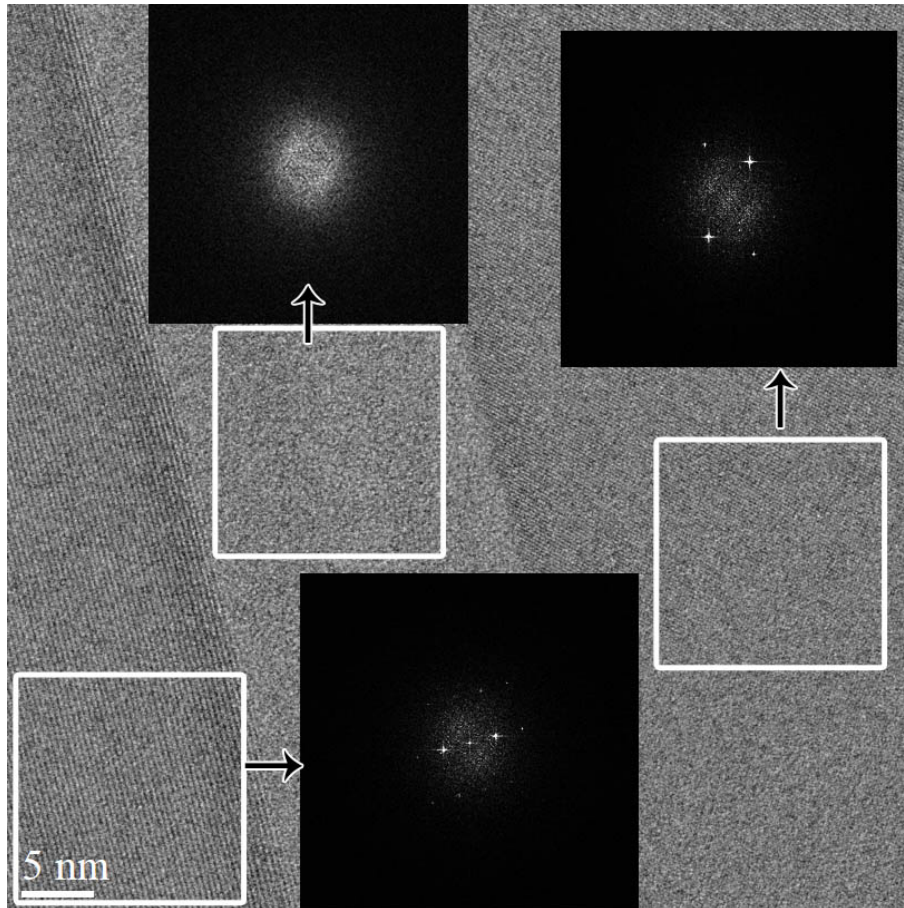
Extended Data Figure 3: specimen NF1050-1. Despite extensive serration of the vertical grain boundary, the forsterite grain in the middle (in Bragg conditions) shows no dislocation activity (no defects). The grain on the left shows only indications of strain due to defects where indicated by the arrow.



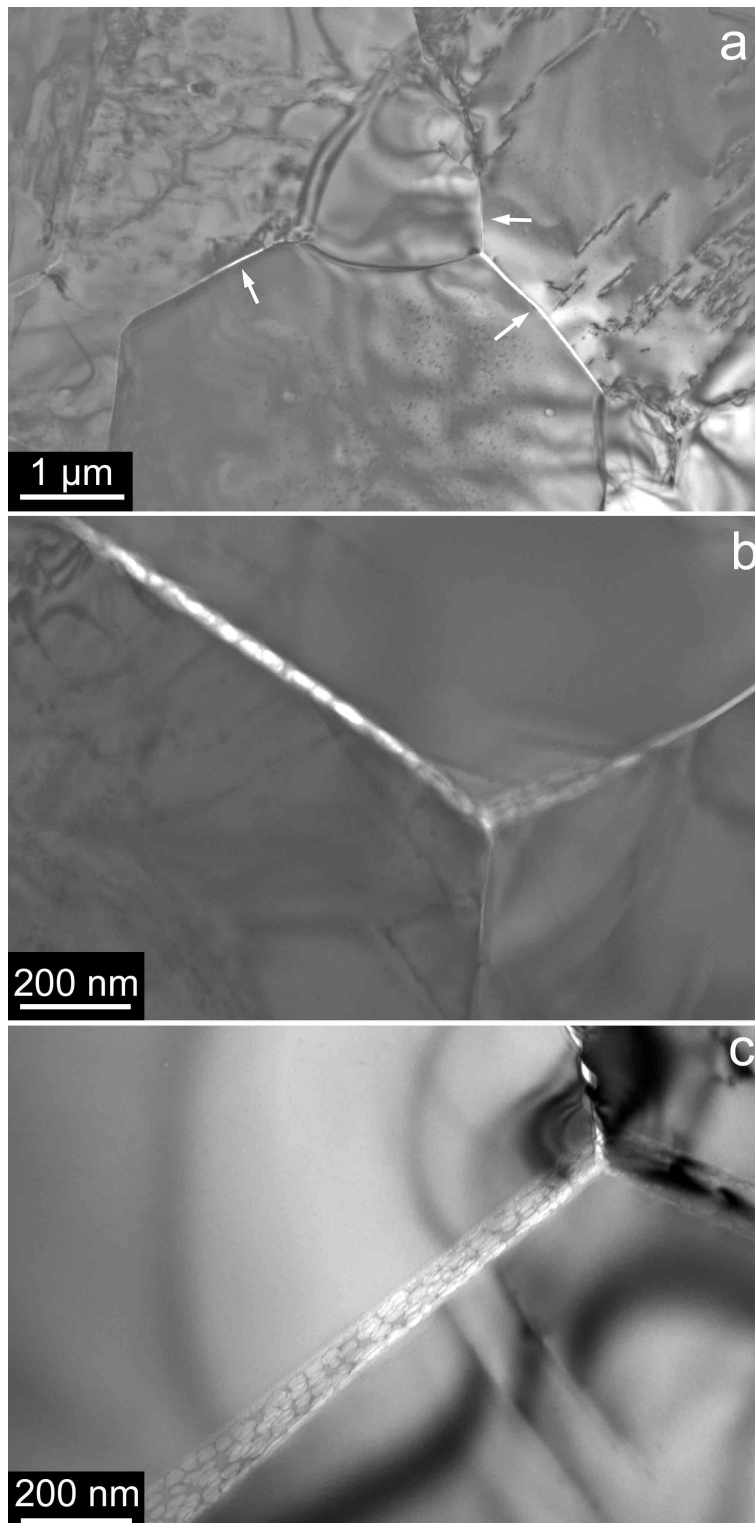
Extended Data Figure 4: HRTEM micrograph of an amorphous layer in a grain boundary. Experiment M639 deformed in the multi-anvil press at 1200°C, 5GPa.



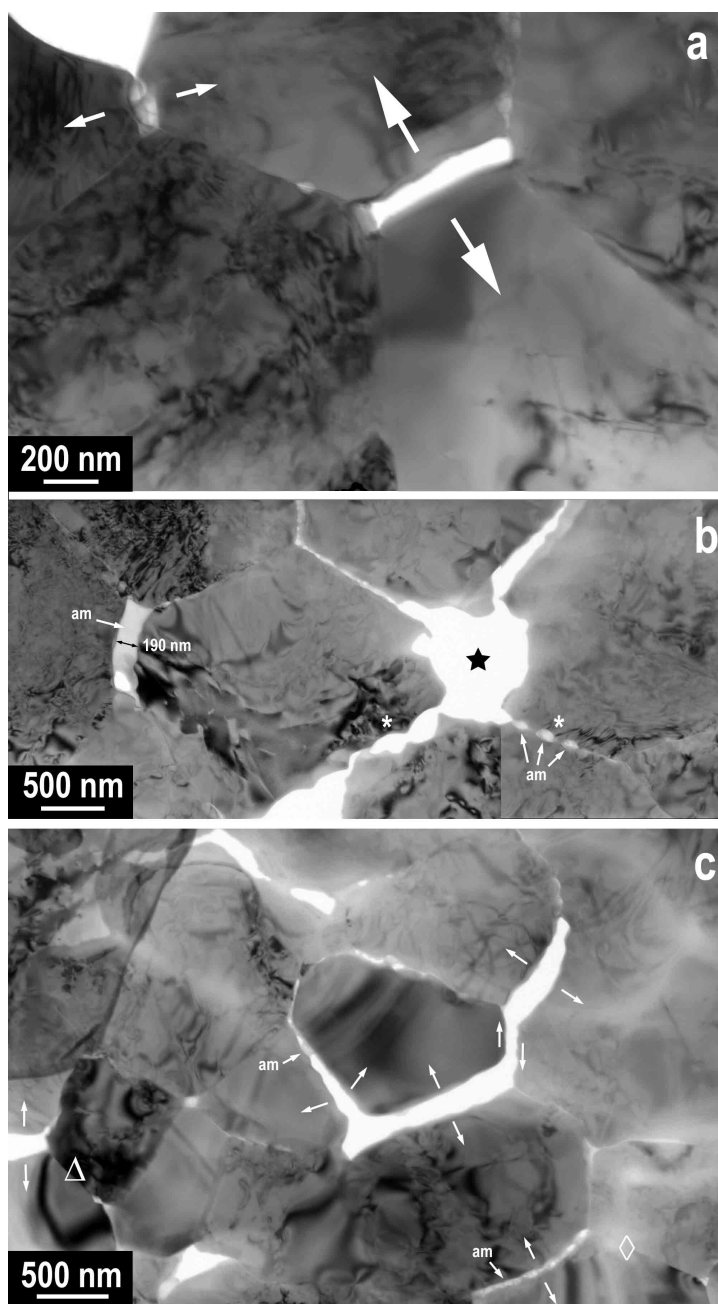
Extended Data Figure 5 : Grain boundaries of undeformed samples a-d) HRTEM of a grain boundary in the starting material used in Gasc *et al.* (2019) prior deformation experiments in the Paterson press.



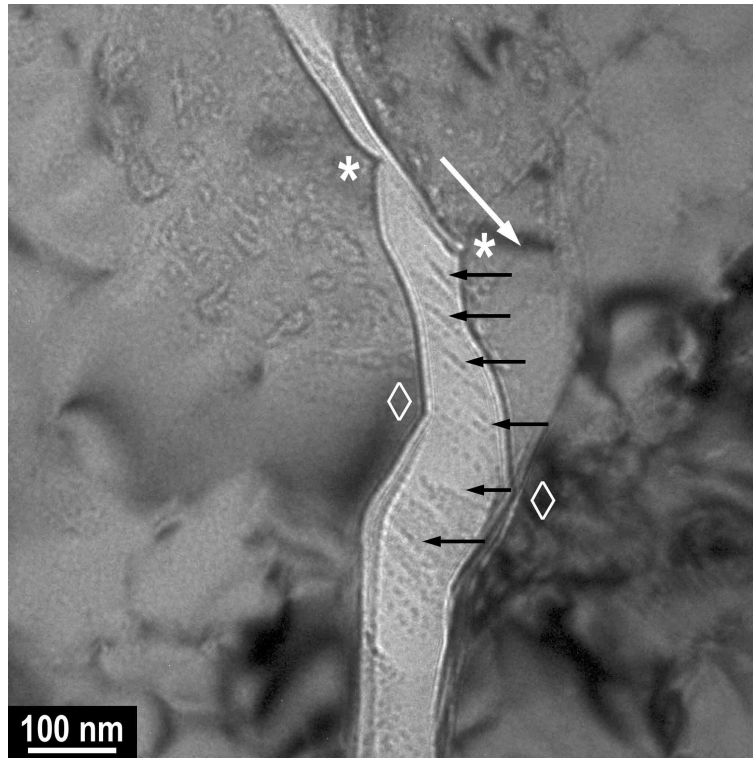
Extended Data Figure 6: Specimen M576. HRTEM of a grain boundary showing an amorphous layer; the FFTs from different regions are presented in insets.



Extended Data Figure 7: CTEM of grain boundaries in specimen NF950-1. a) Evidence for cleavage-like intergranular fracturing (arrowed boundaries) ; b) Some grain boundaries display evidence for internal flow-like structure ; c) Inclined view of such boundary showing the cellular structures inside the boundary. At this temperature, the displacements remain very small.



Extended Data Figure 8: Evidence of grain boundary sliding in specimen NF1050-1. CTEM images. a) Arrows indicate where grain boundary opening occurs in response to tensile stress components. These displacements must be accompanied by some shear along the neighboring boundaries. Without markers, these shear displacements cannot be quantified. b) is an assemblage of two micrographs. This region which was probably under horizontal tensile loading shows large displacements along vertical boundaries. Note that due to differential ion thinning rates between crystalline and amorphous materials, the region with the black star shows no remaining amorphous material (as in a)). In the boundary on the left located in a thicker region, some amorphous olivine (am) is preserved. The extensional displacement at this boundary (ca. 190 nm) is used in the Methods section to evaluate the local strain. The boundaries indicated by the white asterisks show strong morphological evidence of ductile flow. The one on the right is still filled with amorphous olivine. c) The grain at the center was probably subjected to complex triaxial loading which has been accommodated by amorphization (some is remaining: “am”) and flow involving rotational, tensile and shear components (arrows). On the bottom right is a grain boundary still filled with amorphous material under tensile loading. The neighboring grain boundary (white diamond) must also have experienced some shear. This is also probably the case for the boundary (Δ) that is close to an opening boundary.



Extended Data Figure 9: Evidence of grain boundary sliding in specimen M640 (5 GPa, 1000 °C). Fresnel ($\Delta f \sim -20 \mu\text{m}$) micrograph. The symbols represent markers which help to visualize the shear (represented by the vector (white arrow)). Note also the shear bands evidenced by the Fresnel contrast and shown by some black arrows. Due to the shape of the grain, the pure shear sliding displacement in the upper part of the grain boundary transforms into opening in the central part.