



HAL
open science

Prospective subgroup analyses of the randomized MCL-002 (SPRINT) study: lenalidomide versus investigator's choice in relapsed or refractory mantle cell lymphoma

Luca Arcaini, Thierry Lamy, Jan Walewski, David Belada, Jiri Mayer, John Radford, Wojciech Jurczak, Franck Morschhauser, Julia Alexeeva, Simon Rule, et al.

► To cite this version:

Luca Arcaini, Thierry Lamy, Jan Walewski, David Belada, Jiri Mayer, et al.. Prospective subgroup analyses of the randomized MCL-002 (SPRINT) study: lenalidomide versus investigator's choice in relapsed or refractory mantle cell lymphoma. *British Journal of Haematology*, 2018, *British journal of haematology*, 180, pp.224-235. 10.1111/bjh.15025 . hal-03196163

HAL Id: hal-03196163

<https://hal.univ-lille.fr/hal-03196163v1>

Submitted on 12 Apr 2021



HAL is a multi-disciplinary open access archive for the deposit and dissemination of scientific research documents, whether they are published or not. The documents may come from teaching and research institutions in France or abroad, or from public or private research centers.

L'archive ouverte pluridisciplinaire **HAL**, est destinée au dépôt et à la diffusion de documents scientifiques de niveau recherche, publiés ou non, émanant des établissements d'enseignement et de recherche français ou étrangers, des laboratoires publics ou privés.



Distributed under a Creative Commons Attribution - NonCommercial - NoDerivatives 4.0 International License

Prospective subgroup analyses of the randomized MCL-002 (SPRINT) study: lenalidomide *versus* investigator's choice in relapsed or refractory mantle cell lymphoma

Luca Arcaini,^{1,2}  Thierry Lamy,³ Jan Walewski,⁴ David Belada,⁵ Jiri Mayer,⁶ John Radford,⁷ Wojciech Jurczak,⁸ Franck Morschhauser,⁹ Julia Alexeeva,¹⁰ Simon Rule,¹¹  José Cabeçadas,¹² Elias Campo,¹³ Stefano A. Pileri,¹⁴ Tsvetan Biyukov,¹⁵ Meera Patturajan,¹⁶ Marie-Laure Casadebaig Bravo,¹⁵ and Marek Trněný,¹⁷ on behalf of the SPRINT Trial Investigators

¹Department of Molecular Medicine, University of Pavia, Pavia, Italy, ²Department of Haematology Oncology, Fondazione IRCCS Policlinico San Matteo, Pavia, Italy, ³Department of Haematology, Hôpital Pontchaillou, Rennes, France, ⁴Department of Lymphoid Malignancies, Maria Skłodowska-Curie Memorial Institute and Oncology Centre, Warsaw, Poland, ⁵Fourth Department of Internal Medicine, Haematology, Charles University Hospital and Faculty of Medicine, Hradec Králové, Czech Republic, ⁶Department of Internal Medicine, Haematology and Oncology, University Hospital Brno, Brno, Czech Republic, ⁷The University of Manchester and the Christie NHS Foundation Trust, Manchester Academic Health Science Centre, Manchester, United Kingdom, ⁸Department of Haematology, Jagiellonian University Medical College, Kraków, Poland, ⁹Department of Haematology, Hôpital Claude Huriez, EA 7365 GRITA, Lille, France, ¹⁰Department of Haematology Research, Federal Medical Research Centre, Saint Petersburg, Russia, ¹¹Department of Haematology, Derriford Hospital, Plymouth, United Kingdom, ¹²Serviço de Anatomia Patológica, Instituto Português de Oncologia de Lisboa Francisco Gentil, Lisboa, Portugal, ¹³Haematopathology Unit, Hospital Clinic, University of Barcelona, Barcelona, Spain, ¹⁴Unit of Haematopathology, European Institute of Oncology, Milan, Italy, ¹⁵Clinical Research and Development, Celgene Sàrl, Boudry, Switzerland, ¹⁶Clinical Research and Development, Celgene Corporation, Summit, NJ, USA and

Summary

In the mantle cell lymphoma (MCL)-002 study, lenalidomide demonstrated significantly improved median progression-free survival (PFS) compared with investigator's choice (IC) in patients with relapsed/refractory MCL. Here we present the long-term follow-up data and results of preplanned subgroup exploratory analyses from MCL-002 to evaluate the potential impact of demographic factors, baseline clinical characteristics and prior therapies on PFS. In MCL-002, patients with relapsed/refractory MCL were randomized 2:1 to receive lenalidomide (25 mg/day orally on days 1–21; 28-day cycles) or single-agent IC therapy (rituximab, gemcitabine, fludarabine, chlorambucil or cytarabine). The intent-to-treat population comprised 254 patients (lenalidomide, $n = 170$; IC, $n = 84$). Subgroup analyses of PFS favoured lenalidomide over IC across most characteristics, including risk factors, such as high MCL International Prognostic Index score, age ≥ 65 years, high lactate dehydrogenase (LDH), stage III/IV disease, high tumour burden, and refractoriness to last prior therapy. By multivariate Cox regression analysis, factors associated with significantly longer PFS (other than lenalidomide treatment) included normal LDH levels ($P < 0.001$), nonbulky disease ($P = 0.045$), < 3 prior antilymphoma treatments ($P = 0.005$), and ≥ 6 months since last prior treatment ($P = 0.032$). Overall, lenalidomide improved PFS *versus* single-agent IC therapy in patients with relapsed/refractory MCL, irrespective of many demographic factors, disease characteristics and prior treatment history.

Keywords: lenalidomide, mantle cell lymphoma, non-Hodgkin lymphoma.

¹⁷Department of Haematology, Charles University Hospital, Prague, Czech Republic

Received 17 July 2017; accepted for publication
19 September 2017

Correspondence: Prof. Luca Arcaini,
Department of Molecular Medicine, University
of Pavia, Department of Haematology
Oncology, Fondazione IRCCS Policlinico San
Matteo, Viale Golgi, 19 27100 Pavia, Italy.
E-mail: luca.arcaini@unipv.it

Mantle cell lymphoma (MCL) accounts for ~6% of all cases of non-Hodgkin lymphoma (NHL) and typically presents as advanced stage disease in patients over 60 years of age (Avivi & Goy, 2015). First-line dose-intensive chemoimmunotherapy, with or without stem cell transplantation, leads to improved progression-free survival (PFS) in younger patients with MCL and an overall fit status (Dreyling *et al*, 2014). Older patients with multiple comorbidities are usually treated with less aggressive regimens. MCL typically relapses and becomes increasingly more challenging to manage over the course of the disease. With current therapies in the relapsed/refractory setting (bortezomib, tamsirolimus, lenalidomide, ibrutinib), median overall survival (OS) following relapse is approximately 2 years (Avivi & Goy, 2015). While multiple treatment options are available, some with proven benefit in randomized trials (e.g., lenalidomide, ibrutinib), their role in the standard of care for relapsed/refractory disease and the best possible treatment sequence remains to be defined (Dreyling *et al*, 2014; Avivi & Goy, 2015).

Lenalidomide is an oral immunomodulatory drug (IMiD[®]) with direct and immune-mediated mechanisms of action (Gribben *et al*, 2015) and has shown clinical activity and safety in multiple studies, including 2 single-arm, phase II trials (NHL-002 and NHL-003) in heavily pretreated patients with relapsed/refractory aggressive NHL, including MCL (Habermann *et al*, 2009; Zinzani *et al*, 2013). Subsequently in the single-arm, phase II MCL-001 (EMERGE) study in 134 patients with MCL who had relapsed during treatment with, or developed disease refractory to, bortezomib, lenalidomide treatment resulted in an overall response rate (ORR) of 28%, with a median response duration of 16.6 months (Goy *et al*, 2013, 2015). More recently, in the randomized, open-label, multicentre, phase II MCL-002 (SPRINT) study, the lenalidomide arm showed a statistically significant and clinically meaningful improvement in the primary endpoint of PFS compared with investigator's choice (IC) of single-agent therapy (rituximab, gemcitabine, fludarabine, chlorambucil or cytarabine), with a manageable safety profile (Trnny *et al*, 2016). This primary analysis of MCL-002, which had a cut-off date of 7 March 2014 and a median follow-up of 15.9 months for the overall study

population, found a median PFS of 8.7 months for lenalidomide *versus* 5.2 months for IC (hazard ratio [HR] 0.61, 95% confidence interval [CI] 0.44–0.84; $P = 0.004$). Per the study protocol, follow-up to MCL-002 continues until the death of 70% of patients, median follow-up of responding patients is greater than 2 years, median duration of response has been reached, or 4 years have passed from last patient randomization, whichever comes later.

In the present report, we provide long-term follow-up data and results of preplanned subgroup exploratory analyses from the MCL-002 study to evaluate the potential impact of demographic factors, baseline clinical characteristics, and prior therapies on PFS in patients with relapsed/refractory MCL randomized to receive lenalidomide *versus* IC.

Patients and methods

Study design

The methodology for MCL-002 (ClinicalTrials.gov identifier, NCT00875667) has been previously described (Trnny *et al*, 2016). Key inclusion criteria were minimum age 18 years, Eastern Cooperative Oncology Group (ECOG) performance status (PS) of 0–2, histologically confirmed MCL with cyclin D1 overexpression by immunohistochemistry, measurable disease ≥ 2 cm in the longest diameter, refractory to prior therapy or ≤ 3 relapses and had documented progressive disease after ≥ 1 prior combination chemotherapy regimen with an alkylating agent and an anthracycline, cytarabine and/or fludarabine (with or without rituximab); and ineligibility for intensive chemotherapy or stem cell transplantation (SCT). Patients were stratified by time from diagnosis (< 3 vs. ≥ 3 years), time from last antilymphoma therapy (< 6 vs. ≥ 6 months), and prior autologous SCT and randomized 2:1 to lenalidomide or IC. Oral lenalidomide was initiated at 25 mg/day, days 1–21 of each 28-day cycle until progressive disease (PD) or as tolerated. Rituximab and chlorambucil were administered until PD or unacceptable toxicity, whereas gemcitabine, fludarabine and cytarabine were given for ≤ 6 cycles. Patients randomized to IC were allowed to cross over to lenalidomide following documented PD.

All patients provided written informed consent prior to study initiation. The study protocol and its amendments were approved by an institutional review board or independent ethics committee, or centrally if required by national regulations, and were conducted in accordance with the ethical principles of the Declaration of Helsinki and in compliance with Good Clinical Practice.

Post hoc assessments

As prospectively outlined in the study protocol, planned analyses for longer follow-up were performed by investigator assessment to evaluate PFS in the overall study population and for prespecified subgroups at baseline (i.e., the time of randomization unless otherwise stated). These subgroups are grouped in 3 categories based on their association with MCL International Prognostic Index (MIPI) score, other patient characteristics and treatment history. Specific parameters and cut-off/comparison values within each subgroup are defined in Supplementary Table S1.

We evaluated PFS in the intent-to-treat (ITT) population, which included all randomized patients irrespective of receipt of study treatment. Computed tomography (CT) scans (or magnetic resonance imaging if CT was contraindicated) were performed every 2 cycles (± 7 days) for 6 months and then every 90 days (± 15 days) until documented PD or death.

Statistical analyses

PFS was characterized by Kaplan–Meier estimates with *P* values per log-rank test with determination of median values and 95% CIs. Univariate and multivariate Cox regression models evaluated whether baseline subgroup factors were predictive of the risk of progression or death. Variables with a *P* value < 0.20 by univariate analysis were selected for multivariate analysis. Final variables were selected using a stepwise selection method with entry level *P* = 0.20 and stay level *P* = 0.15. ORR was defined according to Cheson *et al* (1999) and statistical significance determined by Wald χ^2 test (*P* < 0.05).

Results

Patient demographics and disposition

The ITT population comprised 254 patients (*n* = 170 lenalidomide; *n* = 84 IC) enrolled between April 2009 and March 2013. Three patients randomized to lenalidomide and 1 patient randomized to IC did not receive study treatment. Overall, patients had a median age of 68.5 years, 68% were 65 years or older, and 73% were male. Patients had received a median of 2 (range, 1–5) prior treatment regimens, of which 19% had received prior SCT. As previously reported, the treatment arms were balanced in baseline characteristics except for high-risk MIPI score, high tumour burden, bulky

disease, and high lactate dehydrogenase (LDH) concentration, which were more prevalent among patients randomized to lenalidomide *versus* IC (Trnety *et al*, 2016). Also, compared with the IC treatment arm, more patients in the lenalidomide arm had received a higher number of previous anti-lymphoma treatments and had been refractory to their last previous therapy.

As of the data cut-off of 7 March 2016, 163 of 250 patients (65%) overall who received treatment had died. While on study, only 17 (7%) patients had died during or within 30 days of their study treatment (lenalidomide or IC). Causes of death were similar in both treatment groups, primarily due to malignant lymphoma (46% lenalidomide vs. 45% IC), other/unknown causes (17% lenalidomide vs. 20% IC) and toxicity (1 lenalidomide patient vs. 2 IC patients). Sixteen patients were ongoing on initial lenalidomide treatment and 1 patient in the IC (rituximab) group. Additionally, 5 of 40 patients who crossed over from IC to lenalidomide were still receiving lenalidomide treatment.

Progression-free survival

The median follow-up for all surviving patients was 41.3 months, which was an additional 20 months from the initial assessment and published report (Trnety *et al*, 2016). Lenalidomide continued to show longer median PFS than IC (8.6 vs. 5.4 months, respectively; *P* = 0.006; Fig 1A). An improvement in PFS with lenalidomide over IC was evident across most baseline subgroups, particularly those with higher numbers of patients, and including patients aged ≥ 65 years (*P* = 0.001; Fig 1B); with advanced stage III/IV disease at diagnosis (*P* = 0.014; Fig 1C), high LDH (*P* = 0.016; Fig 1D), high tumour burden (*P* = 0.007; Fig 1E), bulky disease (*P* = 0.068; Fig 1F); and whose disease was refractory to their last therapy (*P* < 0.001; Fig 1G). In support of higher PFS in these same categories, lenalidomide treatment showed higher ORR compared with IC at the earliest efficacy assessment (Cycle 3) when treatment on all IC comparators was still ongoing (Supplementary Figure S1).

Figure 2 lists the total number of patients per arm and subgroup depicted in the forest plots, along with their associated median PFS values and *P* value. Subgroup data were missing for some patients. Subgroups that had statistically significant improvements in PFS favouring lenalidomide over IC included patients with intermediate (*P* = 0.033) and high MIPI score at baseline (*P* = 0.037), age ≥ 65 years (*P* = 0.001), ECOG PS 0–1 (*P* = 0.025) or 2–4 (*P* = 0.019), normal (*P* = 0.049) or high LDH (*P* = 0.016), and $< 6.7 \times 10^9/l$ white blood cell (WBC) counts (*P* = 0.011) (Fig 2A). The analysis of other patient and disease characteristics (Fig 2B) showed statistically significant improvements in PFS favouring lenalidomide in females (*P* = 0.035), stage III/IV disease at diagnosis (*P* = 0.014) irrespective of tumour burden (low *P* = 0.018; high *P* = 0.007), in patients without bulky disease (*P* = 0.004) or bone marrow involvement

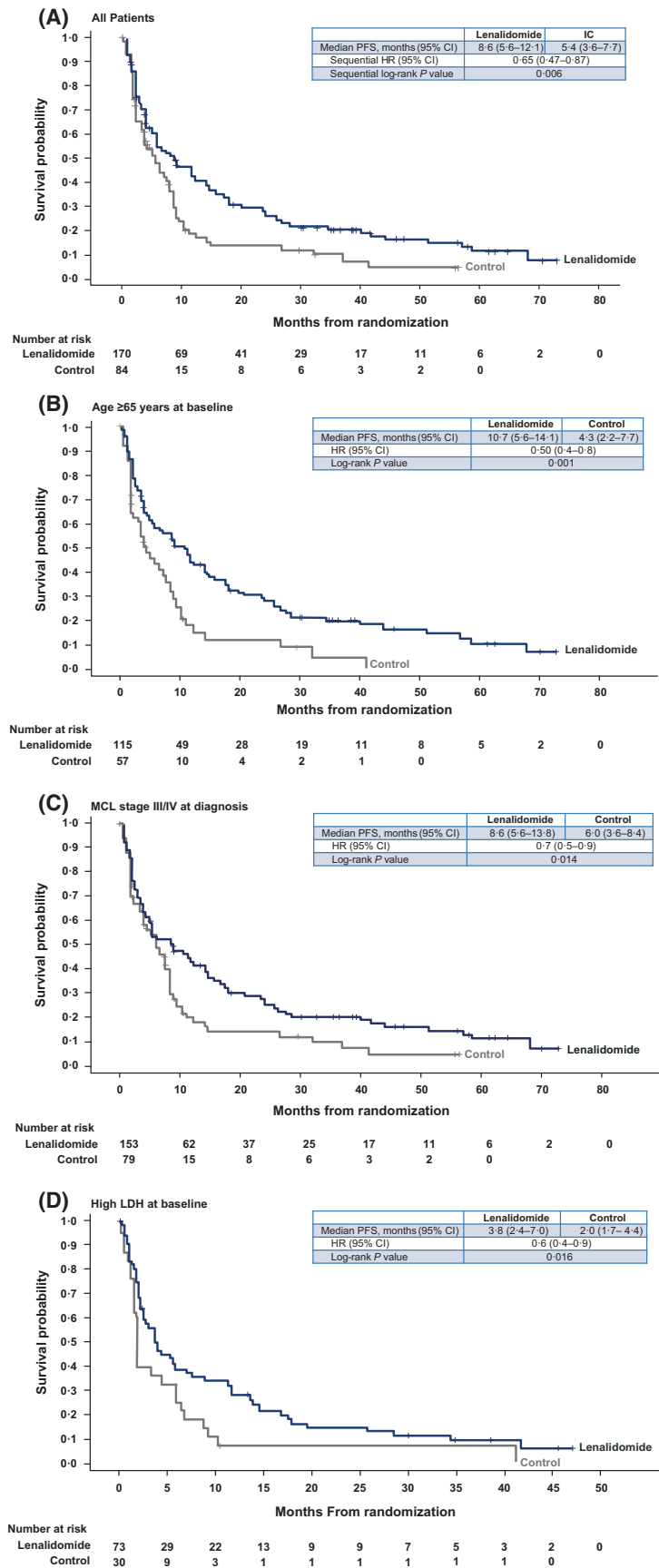


Fig 1. Kaplan–Meier curves of PFS in the lenalidomide *versus* IC treatment arms for all patients (A) and for patient subgroups with age ≥65 years (B), advanced MCL stage III/IV at diagnosis (C), high LDH at baseline (D), high tumour burden at baseline (E), bulky disease at baseline (F) and disease refractory to last treatment (G). 95% CI, 95% confidence interval; HR, hazard ratio; IC, investigator’s choice; LDH, lactate dehydrogenase; MCL, mantle cell lymphoma; PFS, progression-free survival.

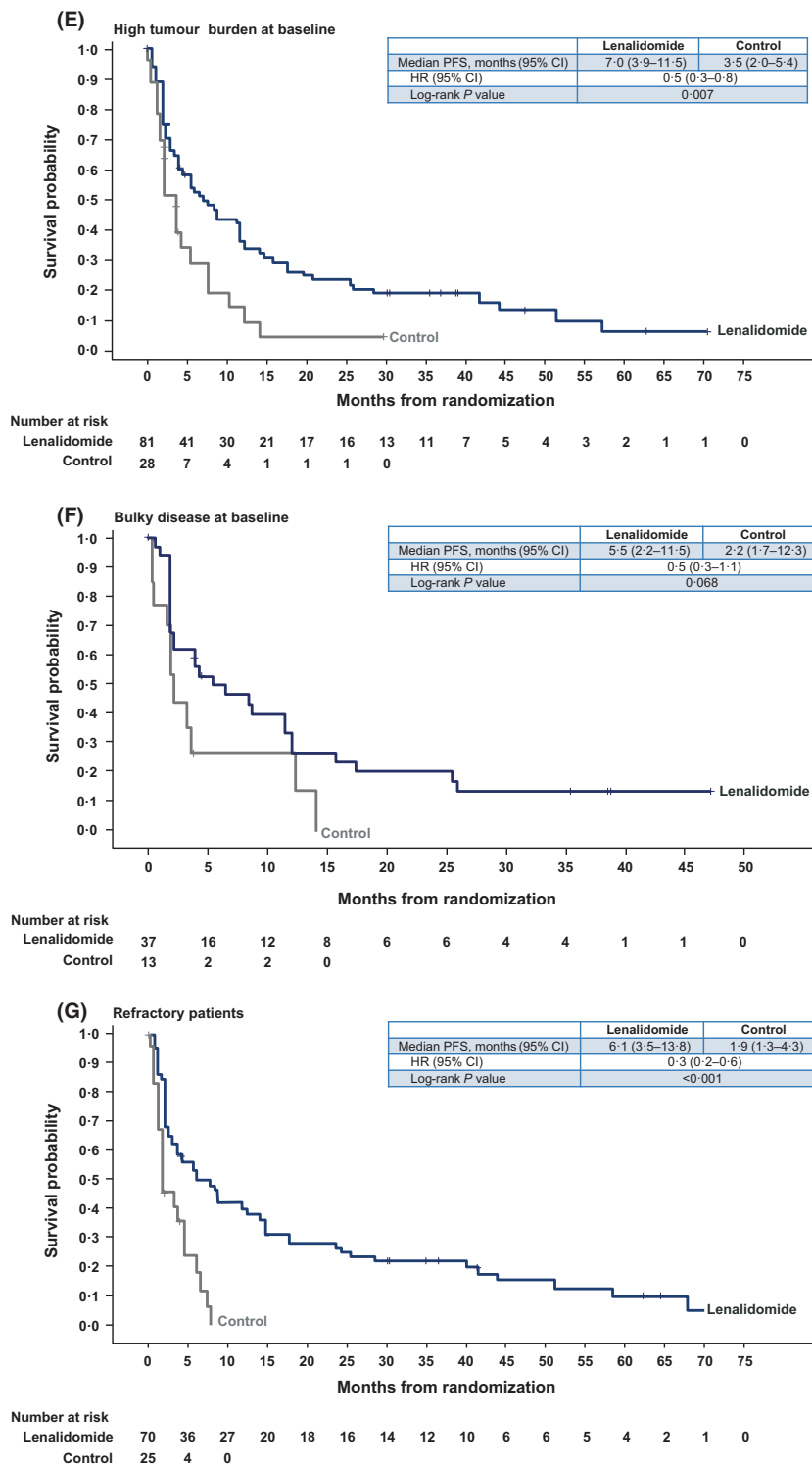


Fig 1. Continued.

($P = 0.006$) and in patients with both normal ($P = 0.026$) and moderate renal function ($P = 0.019$).

We also evaluated subgroups to examine the potential impact of prior therapy on PFS outcomes. As shown in Fig 2C, lenalidomide significantly improved PFS compared with IC in patients who were <3 years from MCL

diagnosis ($P = 0.002$); had more prior systemic antilymphoma therapies ($P = 0.002$ for ≥ 2 ; $P = 0.020$ for ≥ 3); were refractory to their last therapy ($P < 0.001$); had >1 prior relapses ($P = 0.007$ for >1 , $P = 0.007$ for ≥ 2 , $P = 0.006$ for <3); regardless of time from last prior therapy ($P = 0.042$ for <6 months, and $P = 0.033$ for

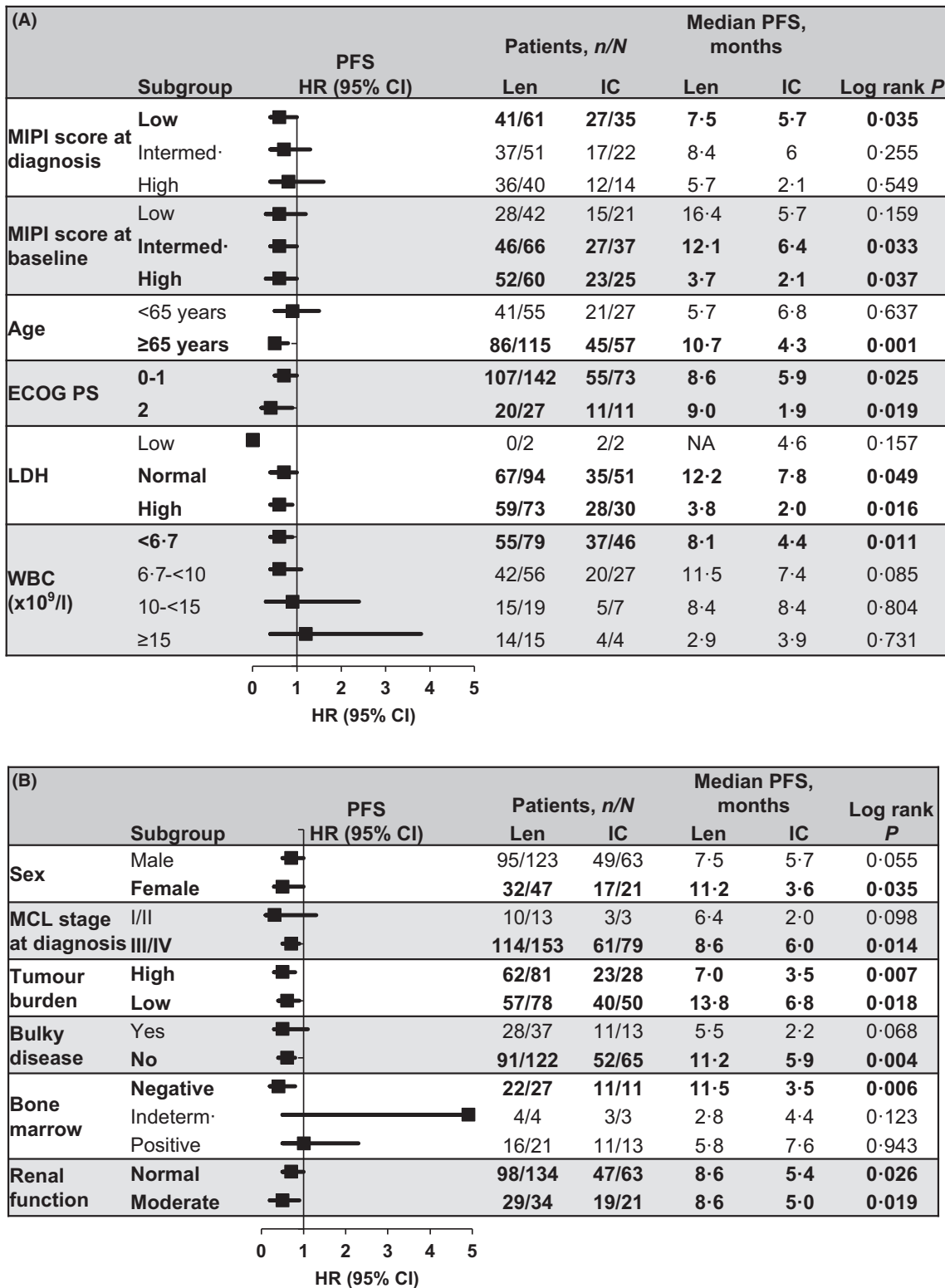


Fig 2. Forest plots of treatment effects on median PFS by subgroups according to MIPI-based characteristics (A), other patient characteristics (B), and prior treatment history (C). Improved PFS to the left of the vertical line (i.e., at 1) favours lenalidomide and to the right of the line favours IC. Black squares represent the HR; horizontal lines represent 95% CI. Statistically significant ($P \leq 0.05$) values and the specified factors are shown in bold. 95% CI, 95% confidence interval; ECOG PS, Eastern Cooperative Oncology Group performance status; HR, hazard ratio; IC, investigator's choice; Intermed., intermediate; LDH, lactate dehydrogenase; Len, lenalidomide; MCL, mantle cell lymphoma; MIPI, MCL International Prognostic Index; PFS, progression-free survival; SCT, stem cell transplantation; WBC, white blood cell count.

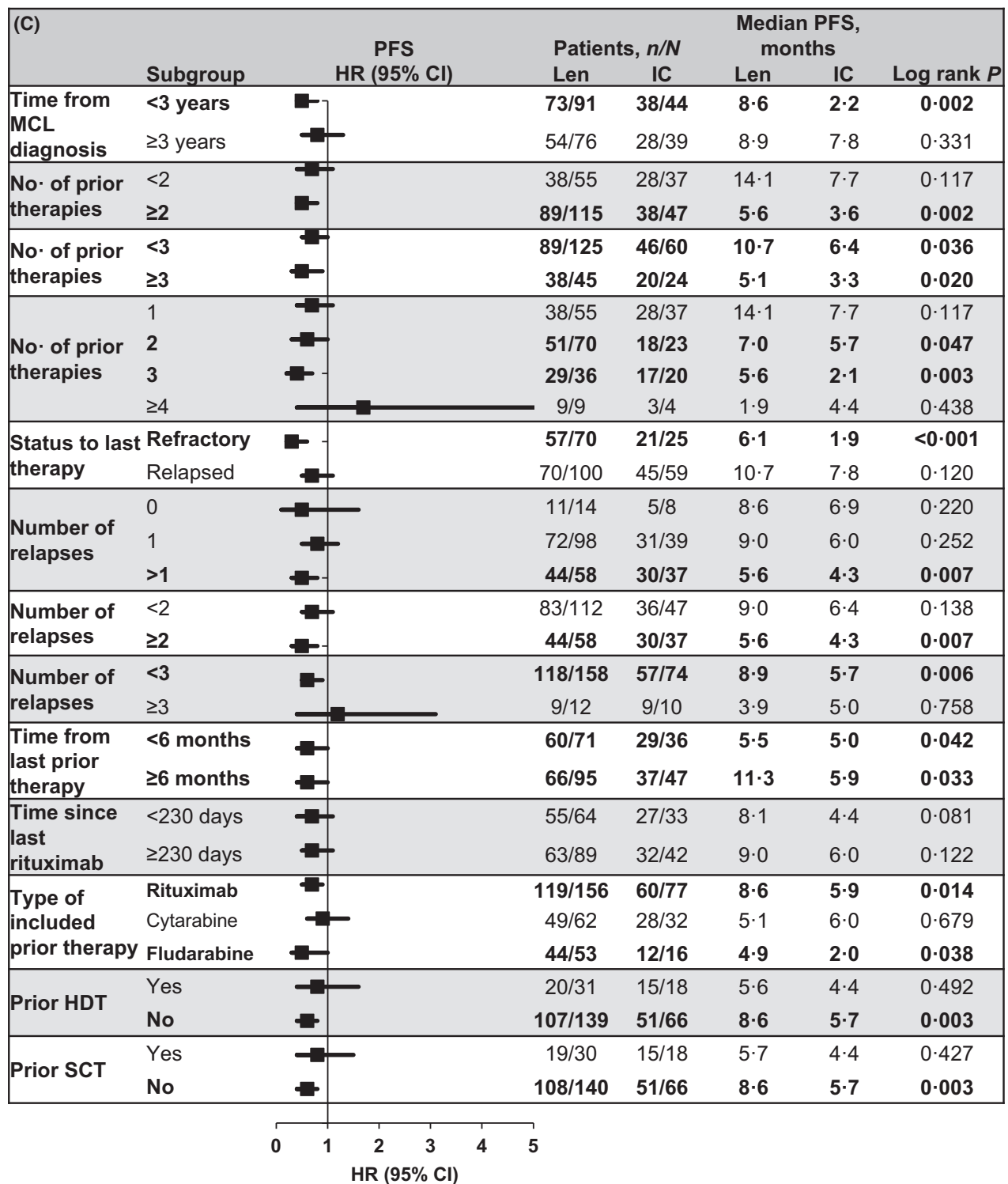


Fig 2. Continued.

≥6 months); received prior rituximab- ($P = 0·014$) or fludarabine-containing therapy ($P = 0·038$); and had not received prior high-dose therapy (HDT; $P = 0·003$) or undergone prior SCT ($P = 0·003$). Despite the limitation

of small patient numbers in some subgroups, these data suggest that lenalidomide may significantly improve PFS compared with IC treatment irrespective of ECOG status, high LDH and tumour burden.

Univariate and multivariate analyses for progression-free survival

Further evaluation of subgroups by univariate Cox regression analysis showed that treatment group (lenalidomide favoured over IC) was the main effect associated with significantly improved PFS (HR = 0.65; $P = 0.005$), which was also highly significant by multivariate analysis (HR = 0.42; $P < 0.001$) (Table I). Other subgroups with statistically significant improvements in PFS ($P < 0.05$) in the univariate analysis

were low/intermediate MIPI score at diagnosis and baseline, normal LDH levels, $<10 \times 10^9/l$ WBC counts, normal renal function, <3 prior systemic antilymphoma therapies and ≥ 6 months since last prior therapy.

In the multivariate Cox regression analysis, normal LDH level was associated with highly significant improvement in PFS ($P < 0.001$) with lenalidomide treatment *versus* IC (Table I). Other factors retaining significance in the multivariate model included no bulky disease ($P = 0.045$), <3

Table I. Univariate and multivariate analyses by Cox Regression on PFS by investigator assessment.*

Baseline variable	Univariate analysis		Multivariate analysis	
	HR (95% CI)	<i>P</i> value	HR (95% CI)	<i>P</i> value
Treatment (lenalidomide <i>versus</i> IC)	0.65 (0.48–0.87)	0.005	0.42 (0.28–0.62)	<0.001
MIPI-based characteristics				
MIPI score at diagnosis (high <i>versus</i> low/intermediate)†	1.57 (1.12–2.20)	0.009	—	—
MIPI score at baseline (high <i>versus</i> low/intermediate)†	2.11 (1.57–2.83)	<0.001	1.51 (1.00–2.27)	0.052
Age, years (≥ 65 vs. <65)	1.02 (0.75–1.38)	0.919	—	—
ECOG PS (2 vs. 0–1)	1.46 (0.99–2.16)	0.053	—	—
LDH (high <i>versus</i> low/normal)‡	2.00 (1.49–2.67)	<0.001	2.02 (1.35–3.01)	<0.001
WBC ($\geq 10 \times 10^9/l$ vs. $<10 \times 10^9/l$)	1.55 (1.08–2.21)	0.017	—	—
Other patient characteristics				
Sex (female <i>versus</i> male)	0.86 (0.62–1.18)	0.348	—	—
MCL stage at diagnosis (III/IV <i>versus</i> I/II)	0.81 (0.46–1.42)	0.461	—	—
Tumour burden (low <i>versus</i> high)§	0.81 (0.60–1.08)	0.155	—	—
Bulky disease (yes <i>versus</i> no)¶	1.40 (0.98–2.01)	0.063	1.57 (1.01–2.43)	0.045
Bone marrow assessment (negative <i>versus</i> indeterminate/positive)**	0.72 (0.44–1.20)	0.206	—	—
Renal function (normal <i>versus</i> moderate/severe insufficiency)††	0.60 (0.43–0.84)	0.003	—	—
Prior treatment history				
Time from MCL diagnosis to first dose (≥ 3 <i>versus</i> <3 years)	0.85 (0.64–1.14)	0.280	—	—
Number of prior systemic antilymphoma therapies (≥ 3 <i>versus</i> <3)	1.51 (1.11–2.06)	0.009	1.75 (1.19–2.58)	0.005
Disease status to last prior therapy (relapsed‡‡ <i>versus</i> refractory)	0.77 (0.58–1.03)	0.075	—	—
Time from last prior therapy to first dose (≥ 6 vs. <6 months)	0.74 (0.55–0.98)	0.034	0.68 (0.47–0.97)	0.032
Time since last rituximab to first dose (≥ 230 vs. <230 days)	0.79 (0.59–1.07)	0.127	—	—
Prior HDT (yes <i>versus</i> no)§§	0.98 (0.68–1.42)	0.930	—	—
Prior SCT (yes <i>versus</i> no)	0.96 (0.66–1.39)	0.837	—	—

95% CI, 95% confidence interval; CR, complete response; CrCl, creatinine clearance; ECOG PS, Eastern Cooperative Oncology Group performance status; HDT, high-dose therapy; HR, hazard ratio; LDH, lactate dehydrogenase; MCL, mantle cell lymphoma; MIPI, MCL International Prognostic Index; PFS, progression-free survival; SCT, stem cell transplantation; WBC, white blood cell count.

*Variables with P value <0.20 in the univariate analysis were selected for multivariate analysis. Final variables were selected using a stepwise selection method with entry level = 0.20 and stay level = 0.15. Multivariate survival analysis using Cox's regression model was estimated using 162 patients.

†MIPI score = $0.03535 * \text{age} + 0.6978 * (\text{if ECOG PS} > 1) + 1.367 * \log_{10}(\text{LDH}/\text{upper limit of normal}) + 0.9393 * \log_{10}(\text{WBC per } 10^{-6}/l)$.

‡High LDH was $>3.4 \mu\text{kat}/l$ for patients aged ≤ 60 years and $>3.5 \mu\text{kat}/l$ for those aged >60 years; low LDH was $<1.8 \mu\text{kat}/l$; normal was defined per local laboratory criteria.

§High tumour burden was defined by at least one lesion ≥ 5 cm in diameter or three lesions ≥ 3 cm in diameter by central radiology review.

¶Bulky disease was defined by at least one lesion ≥ 7 cm in the longest diameter by central radiology review.

**For estimation of bone marrow involvement by local pathologist, negative was defined as having no aggregates or only a few well-circumscribed lymphoid aggregates, indeterminate bone marrow was defined as having an increased number/size of lymphoid aggregates without overt malignancy, and positive was defined as an unequivocal malignancy.

††Normal renal function was defined as CrCl of ≥ 60 ml/min; moderate insufficiency had CrCl ≥ 30 to <60 ml/min but not requiring dialysis; severe insufficiency had CrCl <30 ml/min. 2 patients had severe insufficiency in this study.

‡‡Relapse included patients with best response to last treatment of CR, unconfirmed CR, or partial response.

§§HDT was defined as SCT, hyper-CVAD (hyper fractionated cyclophosphamide, vincristine, doxorubicin, dexamethasone plus methotrexate and cytarabine), or R-hyper-CVAD (rituximab + Hyper CVAD).

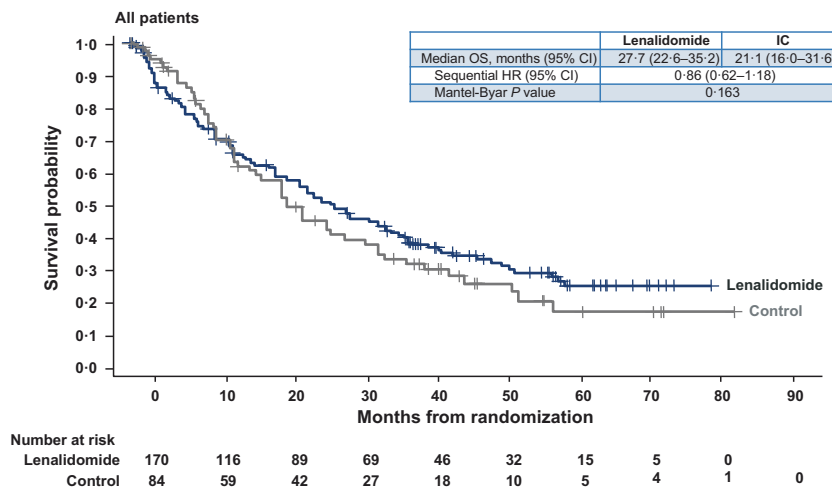


Fig 3. Kaplan–Meier curves of overall survival in the lenalidomide *versus* IC treatment arms for all patients. 95% CI, 95% confidence interval; HR, hazard ratio; IC, investigator's choice; OS, overall survival.

prior antilymphoma treatments ($P = 0.005$) and ≥ 6 months since last prior therapy ($P = 0.032$).

Univariate and multivariate analyses for overall survival

Median OS was 27.8 months (95% CI, 22.6–35.3) for lenalidomide *versus* 21.2 months (95% CI, 16.0–31.7) for IC (HR = 0.86; 95% CI, 0.62–1.18; Mantel-Byar $P = 0.34$ [taking into account the effect of crossover]; Fig 3). We also performed univariate and multivariate analyses for OS as a way of identifying and/or confirming the role of potential independent factors on survival (Table II). For OS, although the comparison between treatment groups (lenalidomide *versus* IC) did not achieve statistical significance, baseline factors that were statistically significant in the univariate analysis ($P < 0.05$) and led to improved OS were ECOG PS 0–1, normal LDH, low/intermediate MIPI score at diagnosis or baseline, < 3 prior antilymphoma therapies, relapsed status to last therapy, ≥ 6 months from last prior therapy, low tumour burden and no bulky disease. Multivariate analysis of OS identified female sex as a significant independent prognostic factor (HR = 0.54; 95% CI, 0.33–0.89; $P = 0.015$).

Discussion

The primary analysis of MCL-002 demonstrated that lenalidomide significantly improved PFS compared with single-agent IC therapy in patients with relapsed/refractory MCL, resulting in a significant risk reduction in PD or death (Trneny *et al*, 2016). The current exploratory subgroup and multivariate analyses extend these findings by uncovering an improved clinical benefit with lenalidomide compared with IC in patients with a wide range of demographic and baseline clinical characteristics. Moreover, the PFS benefit of lenalidomide over IC does not appear to be affected by the level of disease activity (measured by increased LDH), more advanced stage MCL or tumour burden. Additionally, lenalidomide treatment showed an early significant

improvement in ORR compared with IC at cycle 3, supporting later differences in PFS. The PFS advantage of lenalidomide in patients with poor prognosis (high MIPI score at baseline) and the elderly, who represent the majority of patients with relapsed/refractory MCL, is of particular clinical relevance.

Previous subgroup analyses for lenalidomide were conducted in the MCL-001 study, which evaluated lenalidomide in 134 MCL patients who had experienced relapse after bortezomib or whose disease was refractory to the drug (Goy *et al*, 2013). Because MCL-001 did not have a control arm, the subgroup analyses evaluated the impact of baseline factors on ORR and duration of response (primary study endpoints). Lenalidomide treatment effects were consistent across subgroups in MCL-001, with high LDH identified as the only significant factor for lower activity in the univariate and multivariate analyses (Goy *et al*, 2013).

The present MCL-002 subgroup analyses confirm these findings in a randomized, controlled setting. High LDH is a known adverse prognostic factor in MCL (Hoster *et al*, 2014) and was identified in the current multivariate analysis as an independent factor for worse PFS. Notably, lenalidomide showed a significant improvement in PFS compared with IC in patients with high LDH. Similarly, lenalidomide exhibited a statistically significant PFS benefit in other high-risk subgroups, including patients with high baseline MIPI score, older age (≥ 65 years), stage III/IV disease, high tumour burden and refractoriness to last prior therapy. Lenalidomide treatment was also associated with a non-statistically significant trend toward longer median PFS in several other higher-risk subgroups, including those with bulky disease (≥ 7 cm) and in those who received prior HDT and/or SCT.

The MCL-002 study was prospectively conducted in a large number of patients across multiple centres to examine PFS and was the first randomized, controlled trial of lenalidomide in patients with relapsed/refractory MCL. The present subgroup analyses were prespecified for analysis per

Table II. Univariate and multivariate analyses by Cox Regression on overall survival by investigator assessment.*

Baseline variable	Univariate analysis		Multivariate analysis	
	HR (95% CI)	P value	HR (95% CI)	P value
Treatment (lenalidomide <i>versus</i> IC)	0.86 (0.62–1.18)	0.35	—	—
MIPI-based characteristics				
MIPI score at diagnosis (high <i>versus</i> low/intermediate)†	1.80 (1.27–2.56)	0.001	—	—
MIPI score at baseline (high <i>versus</i> low/intermediate)†	2.00 (1.47–2.74)	<0.001	1.49 (0.96–2.32)	0.08
Age, years (≥65 vs. <65)	1.14 (0.82–1.60)	0.44	—	—
ECOG PS (2 vs. 0–1)	1.62 (1.07–2.43)	0.02	—	—
LDH (high <i>versus</i> low/normal)‡	1.96 (1.44–2.68)	<0.001	1.50 (0.97–2.30)	0.07
WBC (≥10 × 10 ⁹ /l vs. <10 × 10 ⁹ /l)	1.42 (0.96–2.08)	0.08	—	—
Other patient characteristics				
Sex (female <i>versus</i> male)	0.77 (0.54–1.11)	0.16	0.54 (0.33–0.89)	0.02
MCL stage at diagnosis (III/IV <i>versus</i> I/II)	0.96 (0.50–1.82)	0.89	—	—
Tumour burden (low <i>versus</i> high)§	0.68 (0.50–0.94)	0.02	—	—
Bulky disease (yes <i>versus</i> no)¶	1.55 (1.06–2.25)	0.02	1.54 (0.97–2.44)	0.07
Bone marrow assessment (negative <i>versus</i> indeterminate/positive)**	0.71 (0.42–1.22)	0.22	—	—
Renal function (normal <i>versus</i> moderate/severe insufficiency)††	0.71 (0.50–1.01)	0.06	—	—
Prior treatment history				
Time from MCL diagnosis to first dose (≥3 vs. <3 years)	0.82 (0.60–1.12)	0.22	—	—
Number of prior systemic antilymphoma therapies (≥3 vs. <3)	1.59 (1.14–2.22)	0.006	1.49 (0.98–2.25)	0.06
Disease status to last prior therapy (relapsed‡‡ <i>versus</i> refractory)	0.70 (0.51–0.96)	0.03	—	—
Time from last prior therapy to first dose (≥6 vs. <6 months)	0.60 (0.44–0.82)	0.001	0.69 (0.47–1.04)	0.08
Time since last rituximab to first dose (≥230 vs. <230 days)	0.74 (0.53–1.02)	0.07	—	—
Prior HDT (yes <i>versus</i> no)§§	1.13 (0.77–1.68)	0.53	—	—
Prior SCT (yes <i>versus</i> no)	1.09 (0.74–1.62)	0.66	—	—

95% CI, 95% confidence interval; CR, complete response; CrCl, creatinine clearance; ECOG PS, Eastern Cooperative Oncology Group performance status; HDT, high-dose therapy; HR, hazard ratio; LDH, lactate dehydrogenase; MCL, mantle cell lymphoma; MIPI, MCL International Prognostic Index; PFS, progression-free survival; SCT, stem cell transplantation; WBC, white blood cell count.

*Variables with *P* value <0.20 in the univariate analysis were used to select for the multivariate. Final variables were selected using a stepwise selection method with entry level = 0.20 and stay level = 0.15. Multivariate survival analysis using Cox's regression model was estimated using 162 patients.

†MIPI score = 0.03535 * age + 0.6978 * (if ECOG PS >1) + 1.367 * log₁₀ (LDH/ULN) + 0.9393 * log₁₀ (WBC per 10⁶/l).

‡High LDH was >3.4 μkat/l for patients aged ≤60 years and >3.5 μkat/l for those aged >60 years; low LDH was <1.8 μkat/l; normal was defined per local laboratory criteria.

§High tumour burden was defined by at least one lesion ≥5 cm in diameter or three lesions ≥3 cm in diameter by central radiology review.

¶Bulky disease was defined by at least one lesion ≥7 cm in the longest diameter by central radiology review.

**For estimation of bone marrow involvement by local pathologist, negative was defined as having no aggregates or only a few well-circumscribed lymphoid aggregates, indeterminate bone marrow was defined as having an increased number/size of lymphoid aggregates without overt malignancy, and positive was defined as an unequivocal malignancy.

††Normal renal function was defined as CrCl of ≥60 ml/min; moderate insufficiency had CrCl ≥30 to <60 ml/min but not requiring dialysis; severe insufficiency had CrCl <30 ml/min. 2 patients had severe insufficiency in this study.

‡‡Relapse included patients with best response to last treatment of CR, unconfirmed CR, or partial response.

§§HDT was defined as SCT, hyper-CVAD (hyper fractionated cyclophosphamide, vincristine, doxorubicin, dexamethasone plus methotrexate and cytarabine), or R-hyper-CVAD (rituximab + Hyper CVAD).

investigator assessment. One limitation of MCL-002 is that temsirolimus, ibrutinib, and other newer agents that are now available for use in MCL were not considered standard treatment when recruitment in the MCL-002 study began. Thus, although lenalidomide was favoured over IC in the univariate and multivariate analyses, the results may have been influenced by the treatment options available in the IC arm.

Several studies of temsirolimus and ibrutinib have reported similar efficacy by PFS or ORR across subgroups. Temsirolimus *versus* single-agent IC (primarily, gemcitabine and

fludarabine) showed consistently longer PFS across sex, performance status, disease stage at diagnosis, bone marrow involvement and number of prior regimens in exploratory subgroup analyses of a phase III trial (Hess *et al*, 2009) and in a recent retrospective analysis, across MIPI risk categories (Hess *et al*, 2015). Subgroup analyses of a single-arm phase II trial of ibrutinib in 111 patients with relapsed/refractory MCL found similar ORRs, irrespective of multiple baseline factors, including tumour bulk (≥5 and ≥10 cm cut-offs), ≥2 prior treatment regimens and refractory disease (less than partial response to

last prior therapy) (Wang *et al*, 2015). More recently, an open-label phase III study showed that ibrutinib was superior to temsirolimus with regard to improvements in PFS overall and when broken down by subgroups (Dreyling *et al*, 2016).

Another limitation of our analysis is that, despite the relatively large size of the study population, MCL-002 was not powered to detect statistical differences in PFS between subgroups, and the subgroup analyses were prespecified to be exploratory in nature. Therefore, observed differences between lenalidomide and IC should not be overinterpreted. Similarly, the lack of statistical significance between lenalidomide and IC in some subgroups should be interpreted with caution. What makes lenalidomide unique and different from other treatments is the longevity of its responses.

It is interesting to consider the factors (i.e., normal LDH, no bulky disease, <3 prior antilymphoma therapies, ≥6 months since last prior therapy) identified by our multivariate analysis as having a significant positive impact on PFS, in addition to lenalidomide treatment. The MIPI has been validated and refined for previously untreated patients who received chemotherapy ± rituximab (Hoster *et al*, 2008, 2014). In our analysis, some but not all of the MIPI-based factors were identified here as having a significant impact on PFS. How these factors might help risk-stratify patients in the relapsed/refractory setting and with newer, more targeted agents remains to be defined in future larger analyses.

In conclusion, the prespecified subgroup and multivariate analyses for study MCL-002 indicate that lenalidomide improves PFS compared with single-agent IC therapy in patients with relapsed/refractory MCL, independent of most patient demographic and clinical characteristics, and prior treatment history.

Acknowledgements

This study was funded by Celgene Corporation. Editorial support for this manuscript was provided by Julie Kern, PhD, CMPP with Bio Connections LLC, which was funded by Celgene Corporation.

Author contributions

All authors contributed equally to this work.

Disclosures

LA: received advisory board support from Bayer, Gilead, Roche, and Sandoz; consultancy for Celgene and Roche; research support from Gilead.

References

Avivi, I. & Goy, A. (2015) Refining the mantle cell lymphoma paradigm: impact of novel therapies

on current practice. *Clinical Cancer Research*, **21**, 3853–3861.
Cheson, B.D., Horning, S.J., Coiffier, B., Shipp, M.A., Fisher, R.L., Connors, J.M., Lister, T.A.,

Vose, J., Grillo-Lopez, A., Hagenbeek, A., Cabanillas, F., Klippensten, D., Hiddemann, W., Castellino, R., Harris, N.L., Armitage, J.O., Carter, W., Hoppe, R. & Canellos, G.P. (1999) Report of an

JW: reports consultancy and lecture honoraria from Roche, Mundipharma, Celgene, Takeda, Teva, Gilead, and Sanofi; consultancy agreements with Janssen-Cilag, Teva, Boehringer Ingelheim, Karyopharm, Ariad, and Servier; and grant support from GSK/Novartis.

DB and JM: report grants and other remuneration from Celgene.

JR: reports advisory board support for Novartis and Cell Medica; advisory board, speaker's bureau, and research support from Takeda; and grant support from Celgene Ltd to Christie NHS Foundation Trust. JR reports holding of AstraZeneca and GlaxoSmithKline shares by his spouse.

WJ: reports research funding from Celgene, Gilead, Jansen, Novartis, Pfizer, Pharmacyclics, Roche, Sandoz, Spectrum, and Takeda and consulting/advisory boards for Mundipharma, Novartis, Spectrum, Takeda, and Teva.

FM: reports consultancy for Celgene, Genentech/Roche, Servier, and Gilead and honoraria for lectures for Celgene.

SR: reports research funding from Celgene, Janssen, and Roche; advisory boards for AstraZeneca, Celgene, Janssen, Kite, and Roche; and speaker fees from Janssen.

TB, MP, MLCB: are employees of Celgene International SARL and Celgene Corporation.

JC: reports contract fees from Celgene International SARL to the Institute, advisory board from MSD, and speakers' bureau from Roche Pharma.

MT: reports grant support and other remuneration from Celgene and Roche and other remuneration from Janssen and Amgen.

TL and JA: declare no competing interests.

EC: reports honoraria for lectures from Celgene and Takeda, travel expenses and accommodation from Celgene, research grants, educational activity, and expert testimony from Gilead, and advisory board from Bayer and Gilead.

SAP: reports advisory board and speaker's bureau for Takeda.

Supporting Information

Additional Supporting Information may be found in the online version of this article:

Table S1. Prespecified baseline subgroups.

Fig S1. Subgroup analysis of ORR at cycle 3 in the intent-to-treat population for lenalidomide *versus* IC-treated patients (investigator's assessment; March 7, 2016, data cut-off). Statistical significance for *P* values of ORR comparisons was determined by Wald X^2 test ($P < 0.05$). IC, investigator's choice; LDH, lactate dehydrogenase; MCL, mantle cell lymphoma; ORR, overall response rate.

- international workshop to standardize response criteria for non-Hodgkin's lymphomas. NCI Sponsored International Working Group. *Journal of Clinical Oncology*, **17**, 1244–1253.
- Dreyling, M., Geisler, C., Hermine, O., Kluin-Nelemans, H.C., Le Gouill, S., Rule, S., Shpilberg, O., Walewski, J. & Ladetto, M. (2014) Newly diagnosed and relapsed mantle cell lymphoma: ESMO Clinical Practice Guidelines for diagnosis, treatment and follow-up. *Annals of Oncology*, **25** (Suppl. 3), iii83–iii92.
- Dreyling, M., Jurczak, W., Jerkeman, M., Silva, R.S., Rusconi, C., Trneny, M., Offner, F., Caballero, D., Joao, C., Witzens-Harig, M., Hess, G., Bence-Bruckler, I., Cho, S.G., Bothos, J., Goldberg, J.D., Enny, C., Traina, S., Balasubramanian, S., Bandyopadhyay, N., Sun, S., Vermeulen, J., Rizo, A. & Rule, S. (2016) Ibrutinib *versus* temsirolimus in patients with relapsed or refractory mantle-cell lymphoma: an international, randomised, open-label, phase 3 study. *Lancet*, **387**, 770–778.
- Goy, A., Sinha, R., Williams, M.E., Kalayoglu Besisik, S., Drach, J., Ramchandren, R., Zhang, L., Cicero, S., Fu, T. & Witzig, T.E. (2013) Single-agent lenalidomide in patients with mantle-cell lymphoma who relapsed or progressed after or were refractory to bortezomib: phase II MCL-001 (EMERGE) study. *Journal of Clinical Oncology*, **31**, 3688–3695.
- Goy, A., Kalayoglu Besisik, S., Drach, J., Ramchandren, R., Robertson, M.J., Avivi, I., Rowe, J.M., Herbrecht, R., Van Hoof, A., Zhang, L., Cicero, S., Fu, T. & Witzig, T. (2015) Longer-term follow-up and outcome by tumour cell proliferation rate (Ki-67) in patients with relapsed/refractory mantle cell lymphoma treated with lenalidomide on MCL-001(EMERGE) pivotal trial. *British Journal of Haematology*, **170**, 496–503.
- Gribben, J.G., Fowler, N. & Morschhauser, F. (2015) Mechanisms of action of lenalidomide in B-cell non-Hodgkin lymphoma. *Journal of Clinical Oncology*, **33**, 2803–2811.
- Habermann, T.M., Lossos, I.S., Justice, G., Vose, J.M., Wiernik, P.H., McBride, K., Wride, K., Ervin-Haynes, A., Takeshita, K., Pietronigro, D., Zeldis, J.B. & Tusciano, J.M. (2009) Lenalidomide oral monotherapy produces a high response rate in patients with relapsed or refractory mantle cell lymphoma. *British Journal of Haematology*, **145**, 344–349.
- Hess, G., Herbrecht, R., Romaguera, J., Verhoef, G., Crump, M., Gisselbrecht, C., Laurell, A., Offner, F., Strahs, A., Berkenblit, A., Hanushevsky, O., Clancy, J., Hewes, B., Moore, L. & Coiffier, B. (2009) Phase III study to evaluate temsirolimus compared with investigator's choice therapy for the treatment of relapsed or refractory mantle cell lymphoma. *Journal of Clinical Oncology*, **27**, 3822–3829.
- Hess, G., Coiffier, B., Crump, M., Gisselbrecht, C., Offner, F., Romaguera, J., Kang, L. & Moran, P.J. (2015) Effect of prognostic classification on temsirolimus efficacy and safety in patients with relapsed or refractory mantle cell lymphoma: a retrospective analysis. *Experimental Hematology & Oncology*, **4**, 11.
- Hoster, E., Dreyling, M., Klapper, W., Gisselbrecht, C., van Hoof, A., Kluin-Nelemans, H.C., Pfreundschuh, M., Reiser, M., Metzner, B., Einsele, H., Peter, N., Jung, W., Wormann, B., Ludwig, W.D., Duhrsen, U., Eimermacher, H., Wandt, H., Hasford, J., Hiddemann, W. & Unterhalt, M. (2008) A new prognostic index (MIPI) for patients with advanced-stage mantle cell lymphoma. *Blood*, **111**, 558–565.
- Hoster, E., Klapper, W., Hermine, O., Kluin-Nelemans, H.C., Walewski, J., van Hoof, A., Trneny, M., Geisler, C.H., Di Raimondo, F., Szymczyk, M., Stilgenbauer, S., Thieblemont, C., Hallek, M., Forstpointner, R., Pott, C., Ribrig, V., Doorduijn, J., Hiddemann, W., Dreyling, M.H. & Unterhalt, M. (2014) Confirmation of the mantle-cell lymphoma international prognostic index in randomized trials of the European mantle-cell lymphoma network. *Journal of Clinical Oncology*, **32**, 1338–1346.
- Trneny, M., Lamy, T., Walewski, J., Belada, D., Mayer, J., Radford, J., Jurczak, W., Morschhauser, F., Alexeeva, J., Rule, S., Afanasyev, B., Kaplanov, K., Thyss, A., Kuzmin, A., Voloshin, S., Kuliczowski, K., Giza, A., Milpied, N., Stelitano, C., Marks, R., Trumper, L., Biyukov, T., Patturajan, M., Bravo, M.L. & Arcaini, L. (2016) Lenalidomide *versus* investigator's choice in relapsed or refractory mantle cell lymphoma (MCL-002; SPRINT): a phase 2, randomised, multicentre trial. *The Lancet. Oncology*, **17**, 319–331.
- Wang, M.L., Blum, K.A., Martin, P., Goy, A., Auer, R., Kahl, B.S., Jurczak, W., Advani, R.H., Romaguera, J.E., Williams, M.E., Barrientos, J.C., Chmielowska, E., Radford, J., Stilgenbauer, S., Dreyling, M., Jedrzejczak, W.W., Johnson, P., Spurgeon, S.E., Zhang, L., Baher, L., Cheng, M., Lee, D., Beaupre, D.M. & Rule, S. (2015) Long-term follow-up of MCL patients treated with single-agent ibrutinib: updated safety and efficacy results. *Blood*, **126**, 739–745.
- Zinzani, P.L., Vose, J.M., Czuczman, M.S., Reeder, C.B., Haioun, C., Polikoff, J., Tilly, H., Zhang, L., Prandi, K., Li, J. & Witzig, T.E. (2013) Long-term follow-up of lenalidomide in relapsed/refractory mantle cell lymphoma: subset analysis of the NHL-003 study. *Annals of Oncology*, **24**, 2892–2897.