



# Intercalation of Ciprofloxacin in Naturally Occurring Smectite from Bana: Potentiality as Drug Delivery System and Antimicrobial Effects on *Escherichia coli* and *Staphylococcus aureus*

Carine Feudjio Memenfo, Nicolas Tabary, Jean Aimé Mbey, Stephanie Degoutin, Frederic Cazaux, Maryse Bacquet, Mickael Maton, Bernard Martel, Daniel Njopwouo

## ► To cite this version:

Carine Feudjio Memenfo, Nicolas Tabary, Jean Aimé Mbey, Stephanie Degoutin, Frederic Cazaux, et al.. Intercalation of Ciprofloxacin in Naturally Occurring Smectite from Bana: Potentiality as Drug Delivery System and Antimicrobial Effects on *Escherichia coli* and *Staphylococcus aureus*. *Journal of Materials Science and Chemical Engineering*, 2021, *Journal of Materials Science and Chemical Engineering*, 09 (08), pp.21-40. 10.4236/msce.2021.98003 . hal-03333734v1

**HAL Id: hal-03333734**

**<https://hal.univ-lille.fr/hal-03333734v1>**

Submitted on 3 Sep 2021 (v1), last revised 11 Oct 2022 (v3)

**HAL** is a multi-disciplinary open access archive for the deposit and dissemination of scientific research documents, whether they are published or not. The documents may come from teaching and research institutions in France or abroad, or from public or private research centers.

L'archive ouverte pluridisciplinaire **HAL**, est destinée au dépôt et à la diffusion de documents scientifiques de niveau recherche, publiés ou non, émanant des établissements d'enseignement et de recherche français ou étrangers, des laboratoires publics ou privés.



Distributed under a Creative Commons Attribution 4.0 International License

# Intercalation of Ciprofloxacin in Naturally Occurring Smectite from Bana: Potentiality as Drug Delivery System and Antimicrobial Effects on *Escherichia coli* and *Staphylococcus aureus*

Carine Feudjio Memenfo<sup>1,2\*</sup>, Nicolas Tabary<sup>2</sup>, Jean Aimé Mbey<sup>1</sup>, Stéphanie Degoutin<sup>2</sup>, Frédéric Cazaux<sup>2</sup>, Maryse Bacquet<sup>2</sup>, Mickaël Maton<sup>3</sup>, Bernard Martel<sup>2</sup>, Daniel Njopwouo<sup>1</sup>

<sup>1</sup>Laboratory of Applied Inorganic Chemistry, Faculty of Science, University of Yaounde 1, Yaounde, Cameroon

<sup>2</sup>Unité Matériaux et Transformations (UMET), UMR 8207, CNRS, INRA, ENSCL, University of Lille, Lille, France

<sup>3</sup>INSERM, CHU Lille, U1008-Controlled Drug Delivery Systems and Biomaterials, University of Lille, Lille, France

Email: \*memenfofeudjio@yahoo.fr

**How to cite this paper:** Memenfo, C.F., Tabary, N., Mbey, J.A., Degoutin, S., Cazaux, F., Bacquet, M., Maton, M., Martel, B. and Njopwouo, D. (2021) Intercalation of Ciprofloxacin in Naturally Occurring Smectite from Bana: Potentiality as Drug Delivery System and Antimicrobial Effects on *Escherichia coli* and *Staphylococcus aureus*. *Journal of Materials Science and Chemical Engineering*, 9, 21-40.

<https://doi.org/10.4236/msce.2021.98003>

**Received:** June 25, 2021

**Accepted:** August 23, 2021

**Published:** August 26, 2021

Copyright © 2021 by author(s) and Scientific Research Publishing Inc. This work is licensed under the Creative Commons Attribution International License (CC BY 4.0).

<http://creativecommons.org/licenses/by/4.0/>



Open Access

## Abstract

Ciprofloxacin (CFX) was loaded on Bana clay (Cameroon) and CFX loaded-clays have been evaluated as drug delivery system. Raw clays and CFX loaded compounds have been characterized by some physico-chemicals methods. *In vitro* release studies have been done in gastric and phosphate buffer experimental mediums; bacteriological studies have been made up on *Escherichia coli* and *Staphylococcus aureus*. X-ray diffractometry patterns of loaded compounds show a basal spacing increasing due to CFX intercalation. On Fourier-Transformed Infrared spectrometry spectra, appearance of CFX characteristic bands and shifting of certain bands already presents on clay confirmed CFX intercalation. After 96 h of CFX released from release mediums, prolonged and continue profiles have been observed. Diffusion tests displayed an inhibition radius of ~2 cm on gelose seeded with *Escherichia coli* and *Staphylococcus aureus* due to CFX. The overall results show a modified release of ciprofloxacin with an effective antibacterial activity, giving the way for a new ciprofloxacin drug delivery system using Bana clay as carrier.

## Keywords

Antibacterial Effect, Drug Delivery System, Clay, Ciprofloxacin, Intercalation

## 1. Introduction

Smectites are clay minerals used in various fields including petrol drilling, soil

stabilization or pharmaceutical sciences [1] [2] [3] [4] [5]. Their excellent sorption capacity, high cation exchange ability, low toxicity and low price justify the interest to their use as carriers of active substances. [6] Their lamellar structures mainly favour their capacity to accommodate guests organic compounds and thus to form a range of so-called intercalated compounds. The fact that the release of active substances from these compounds is potentially controllable, justifies that these have been for years used by researchers in the development of drug delivery systems (DDS). [7] [8] Among the approaches proposed to synthesize drug delivery systems, ion exchange process has received considerable attention. [9] The synthesis of a delivery system for vitamin B<sub>1</sub> and timolol maleate has been successfully performed using montmorillonite as carrier. [7] [8] The oral bioavailability of the most potent antioxidant, glutathione has been improved by intercalating the latter in montmorillonite. [10] Controlled release venlafaxine hydrochloride has been successfully prepared from montmorillonite as host to delay its release. [2] Some studies indicate that Ciprofloxacin well adsorbed-desorbed on montmorillonite. [11] [12] The antibiotic activity of Ciprofloxacin sorbed by montmorillonite in saturated porous media was studied and the results suggested that montmorillonite with high Ciprofloxacin sorption ability can act as carrier [13]; composite montmorillonite-Ciprofloxacin has shown an antibacterial activity on some common skin bacteria. [14] Good results were obtained in the synthesis of drug delivery system with montmorillonite as carrier of Ciprofloxacin. [15] Ciprofloxacin intercalated perfectly in montmorillonite with a sustained release over time; [16] and gentamicin is intercalated in montmorillonite and showed that the product can be used for control release of gentamicin. [17]

Ciprofloxacin is an antibiotic of fluoroquinolone class with a broad-spectrum of antimicrobial activity against gram (+) and gram (–) bacteria. Generally used for the treatment of respiratory, urinary and gastrointestinal infections, ciprofloxacin has a half-life of 4 to 5 hours. [18] The effect of an active substance depends on the sufficient concentration that reaches the site of action; in that way, the development of a modified form of ciprofloxacin (CFX) would improve its efficiency by maintaining plasmatic concentration to the desired level for long time, reduce undesirable effects, ameliorate comfort and observance of patient, reduce repetitive daily doses and protect CFX. Ciprofloxacin being an ampholyte is a good molecule for experimental elaboration of modified released system in the way that its release could be studied in large range of pH. Note that, synthesis of CFX modified forms requires the choice an appropriate carrier that can easily accommodate CFX. As previously mentioned, smectite clays are good carriers of active substances. [11] [16] [17] In Bana, a locality of the western Cameroon, clay where identified as smectite and characterized. [19] This naturally occurring clay can gain improved value if they are successfully used as drug carrier. Hence, the aim of this study is to evaluate the potentiality of these smectite clays in the formulation of drug carrier systems.

To this end, ciprofloxacin has been chosen as the active substance and will be

used for intercalation in coarse and fine fractions of the Bana clay. The composite CFX-clay have been subjected to physicochemical characterizations using X-ray Diffractometry (XRD), Fourier-Transformed Infrared spectrometry (FTIR), Thermo-gravimetry analysis (TGA) and Brunner-Elmet-Teller analysis (BET). Thereafter, *in vitro* release of CFX and bacteriological effects of the composite CFX-clays on two bacteria, *Escherichia coli* and *Staphylococcus aureus*, have been evaluated.

## 2. Materials and Methods

### 2.1. Materials

The clayey material was collected at 11.50 m depth at Bana (5° 84'E - 5° 1'N), locality of the western region of Cameroon. Characterizations of this clay were carried out in previous work by Mache. [19] Bana clay mineralogy is constituted by montmorillonite (74%), mica (7.2%), kaolinite (4.1%), quartz (2.6%) and feldspar (5.9%). Electrokinetic and pH measurements indicate that Bana clay is negatively charged in the range of pH 2 - 10. Ciprofloxacin or 1-(cyclopropyl)-6-fluoro-4-oxo-7-(piperazin-1-yl)-1,4-dihydroquinoline-3-carboxylic acid powder (Ciflox) molecular weight 331.4 g/mol with purity of 98.0%, chlorhydrated ciprofloxacin (molecular weight 367.9 g/mol) respectively provided by Sigma Aldrich and Fagron, sodium chloride, silver nitrate, hydrochloric acid, phosphate buffer salt provided by Sigma-Aldrich.

Ciprofloxacin (CFX) is a zwitterion that presents two acid constants  $pK_{a1}$  (5.9) and  $pK_{a2}$  (8.8) because of the presence of the carboxylic and amine groups respectively. The cationic form  $CFX^+$  is predominant when the pH is below 5.9 while the anionic form  $CFX^-$  is dominant above pH 8.8. The neutral form  $CFX^0$  is dominant between pH 5.9 and 8.8. [20] Hence, to take advantage of the cationic form in cationic exchange process in presence of clay, working at pH < 5.9 is justified.

### 2.2. Methods

#### 2.2.1. Clay Treatment

The raw sampled clay was wet sieved at 40  $\mu$ m, air-dried, crushed and sieved at 40  $\mu$ m to give BN (Bana). The capacity to be exchange of cations in the interlayer space of smectic clays depends on its hydration degree; this later itself depends on ionic ray. The most the cation has a small ionic ray, the most its exchange is easy. After Lithium,  $Na^+$  has a small ray and literature suggest that its exchangeability by others cations will be easy. [7] We proceed to Na-saturation of Bana to maximise intercalation and release of Ciprofloxacin. 40 g of BN were introduced into 240 ml of 1 M NaCl and then stirred for 8 hours; operation was repeated four times. Then repeated washing with deionized water and centrifugations at 3500 rpm for 40 min was carried out until the supernatant water is free of chloride ions as tested with silver nitrate solution. The obtained cake is dried in oven at 105°C for 24 hours, crushed and sieved at 40  $\mu$ m to give BNNa (Bana satu-

rated with Na<sup>+</sup>). For being around the clay fraction, with an assay of elimination of non-clay fraction, an extraction of the  $\leq 2 \mu\text{m}$  has been done. Another 40 grams of BN were also saturated with NaCl and introduced into 200 mL test tubes containing deionized water; thereafter,  $\leq 2 \mu\text{m}$  particles was extracted after sedimentation pre-calculated time according to the Stokes' law. [21] [22] The suspension obtained undergoes extensive centrifugations at 3500 rpm for 1 hour; the slurry is dried at 105°C for 10 h, ground and sieved at 40  $\mu\text{m}$  to obtain BNNa-F (fine fraction of Bana preceded by Na<sup>+</sup> saturation).

### 2.2.2. Preparation of Loaded Clay-CFX Materials

As quoted in section 2.1, CFX positive form is achieved at pH < 5.9; hence, the intercalation was implemented in batch mode at room temperature in a 10<sup>-2</sup> M HCl with an average medium pH of 2.5. In view to optimize the process, contact time and the initial amount of CFX effect have been calculated; the various operations during the test were replicates three times.

#### 1) Variation of the contact time

The effect of the stirring time on the amount of adsorbed CFX is evaluated by introducing 100 mg of BN, BNNa or BNNa-F in 50 mL of CFX 600 mg/L under a stirring of 500 rotations per minute (rpm) with stirring times between 5 and 240 min. At each time, pre-calculated volume of solution is collected, filtered through PTFE (polytetrafluoroethylene) filters of 0.2  $\mu\text{m}$  and then diluted for the determination of the equilibrium (residual) amount of CFX by using UV-visible spectrophotometry at  $\lambda_{\text{max}} = 277 \text{ nm}$ .

#### 2) Adsorption isotherms

150 mg of BN, BNNa or BNNa-F are introduced into 50 ml of CFX concentrations range 200 to 1000 mg/L. The mixture is stirred at 500 rpm for equilibrium contact time at room temperature and samples are filtered through PTFE filters of 0.2  $\mu\text{m}$ . Maximum amount of CFX adsorbed is determined by measuring residual CFX using UV-visible spectrophotometry at  $\lambda_{\text{max}} = 277 \text{ nm}$ .

### 2.2.3. Characterizations of Raw and Loaded Compounds

Characterizations will approve the smectitic nature of the materials used and confirm CFX intercalation.

X-ray diffractometry (XRD) was performed on powders using a Bruker diffractometer under the following conditions: CuK $\alpha$  radiation, 40 KV voltage, 40 mA intensity and scanning angle from 3° to 70° by steps of 0.02° with a duration of 1 s.

Fourier-transform infrared spectroscopy (FTIR) was performed in ATR mode at 4000 - 600 cm<sup>-1</sup> on ZnSe crystal using a PerkinElmer infrared spectrophotometer.

The thermo-gravimetric analysis (TGA) was carried out using thermo-gravimeter Q5000 between 20°C and 800°C under an oxygen atmosphere at a heating rate of 5°C/min and a flow rate of 25 mL/min of oxygen.

The specific surface areas of the samples were determined from nitrogen adsorption and desorption isotherms at 77 K, obtained from Micrometrics TriStar

II 3020 V1. The specific surface area (SSA) was calculated from adsorption data by applying the Brunauer-Emmet-Teller (B.E.T) method, which only measures the external surface accessible by molecules.

### 2.3. UV-Visible *in vitro* Release Evaluation

*In vitro* release studies have been carried out in phosphate buffered saline media of pH 7.4 and simulated gastric fluid at pH 1.16 in static mode. 10 mg of clay-CFX in 100 mL of buffer solution was taken in a thermo shaker at 37°C with shaking frequency about 100 rpm. 5 ml of sample was withdrawn at regular time intervals and the same volume was replaced with a fresh dissolution medium. Samples were analyzed for CFX content by UV spectrophotometer at  $\lambda_{\max} = 270$  and 277 nm. These studies have been performed in triplicate for each sample and the average values were reported.

### 2.4. Bacteriological Studies

#### 2.4.1. Release Studies Using High Liquid Performance Chromatography (HPLC)

BN, BNNa, BN-CFX and BNNa-CFX samples are sterilized under UV radiation for 15 min; the samples (5 mg) were released in 10 mL of PBS, under agitation at 80 rpm at 37°C. At times 1 h, 2 h, 4 h, 6 h, 24 h, 48 h, 72 h, 96 h, the media of each well is taken by syringe and filter needle (BD Blunt filter Needle, Beckton Dickinson). The collected medium is renewed by 10 mL of fresh PBS, using the needle that was used to rinse it, and restocked to 80 rpm at 37°C. Samples were analyzed for CFX content by HPLC at  $\lambda_{\max} = 270$  nm. These studies were performed in triplicate for each sample and the average values were reported.

The sample mediums (BN, BNNa, BN-CFX and BNNa-CFX) have been analyzed in microbiology by a diffusion test.

#### 2.4.2. Bacteriological Sample Preparation

9 mm diameter Petri dishes containing 18 mL Muller Hinton Agar are seeded with 0.1 mL of bacterial suspension at  $10^4$  cfu/mL (*E. coli* K12 or *S. aureus* CIP224). Carrots of 6mm diameter are made in the agar to obtain wells allowing the deposit of 50  $\mu$ L of solution to be tested.

#### 2.4.3. Methodology

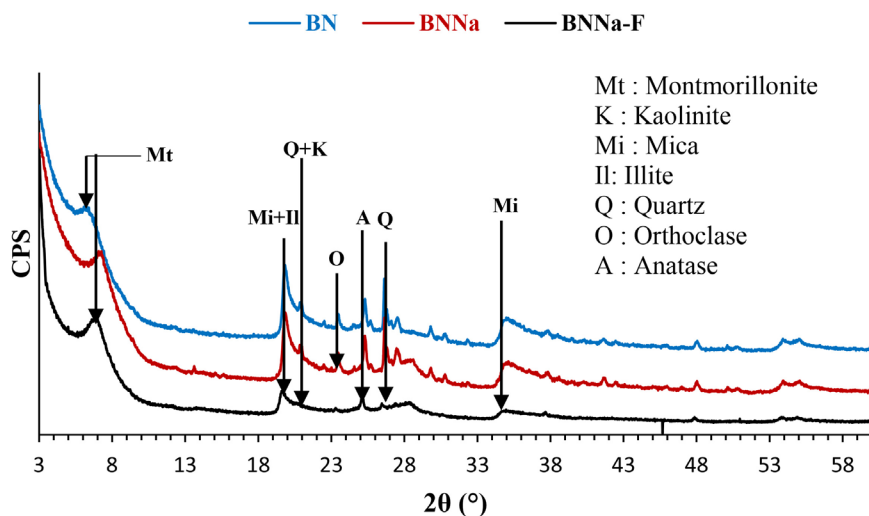
Petri dishes are incubated at 37°C for 24 hours. After 24 h of incubation, the seeded bacteria yielded a homogeneous bacterial mat, and the solutions provided an inhibition zone with a diameter related to the amount of active ingredient contained in the solution tested. The diameter of these inhibition zones is measured, and graphically expressed over time.

## 3. Results and Discussion

### 3.1. Raw Clays and Clay-CFX Loaded Compounds Characterizations

#### 3.1.1. X-Ray Diffractometry (XRD)

**Figure 1** shows the X-ray patterns of clays with basal reflection  $d_{001}$  at 14.10 Å,



**Figure 1.** X-ray patterns of raw materials.

12.33 Å and 12.41 Å respectively for BN, BNNa, BNNa-F assigned to montmorillonite. [23] The difference between basal reflections at 14.10 Å of BN with 12.33 or 12.41 Å of BNNa and BNNa-F could be explained by hydrated radius of naturally intercalated cations of BN in comparison of  $\text{Na}^+$  in homoionic forms. Associated minerals are kaolinite (7.20 Å), mica (4.47 Å), quartz (3.34 Å), anatase (3.51 Å) and orthoclase (3.78 Å). [19] [24] BNNa-F associated mineral are less important probably due to their elimination during the process of fine fraction extraction. BN, BNNa and BNNa-F are smectites clays according to their X-ray patterns. [19]

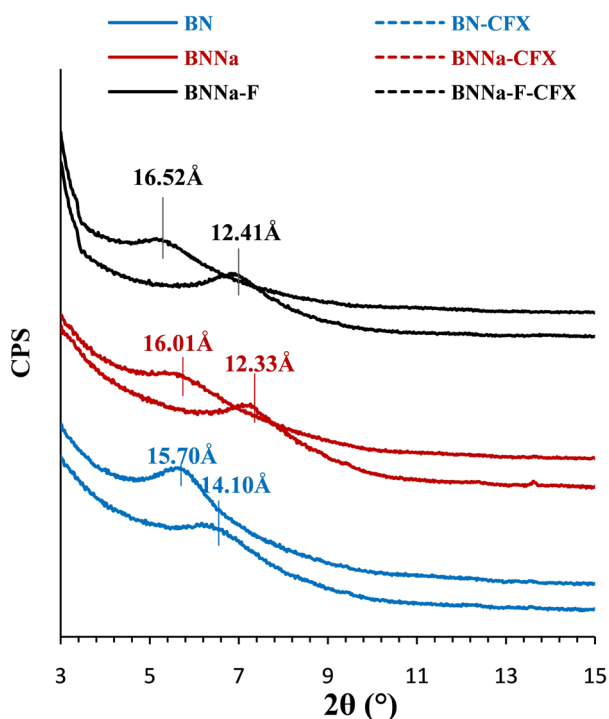
**Figure 2** below presents the visual aspect of Clay-CFX loaded compounds prepared; this aspect is similar to clay mineral.

In **Figure 3**, it can be clearly seen that basal distance at 14.10 Å of BN rises to 15.71 Å for BN-CFX, the one at 12.33 Å of BNNa rises to 16.01 Å for BNNa-CFX and that at 12.41 Å of BNNa-F rises to 16.52 Å for BNNa-F-CFX. The increase of basal spacing could be due to intercalation of CFX by ionic exchange between the hydrated interlayer cations of clays and CFX molecules [11]. The increase in the basal distance for clay-CFX is 1.61 Å, 3.68 Å and 4.11 Å respectively for BN-CFX, BNNa-CFX and BNNa-F-CFX. BNNa and BNNa-F possess in their interlayer a more readily exchangeable cation  $\text{Na}^+$ , while the raw BN may have more tightly linked cations in its interlayer that could limit the CFX intercalation because  $\text{Na}^+$  favours ionic exchange in interlayer space. Cationic exchange capacity (CEC) represents the ionic capacity of interlayer cations to be exchange by others cations and Na-saturation of clay increase this CEC. [8] So, after Na-saturation, CEC of BNNa and BNNa-F become certainly high than raw BN cationic capacity exchange. Which precede could be explain the higher basal spacing variation after CFX loading of BNNa and BNNa-F than BN. The thickness of montmorillonite sheet is 10 Å [25] and the theoretical estimated value of longitudinal molecular length of CFX is 8.5 Å while its lateral molecular length of CFX is 11.9 Å [16]. The interlayer space represents the basal spacing minus





**Figure 2.** Visual aspect of clay-CFX loaded compounds.



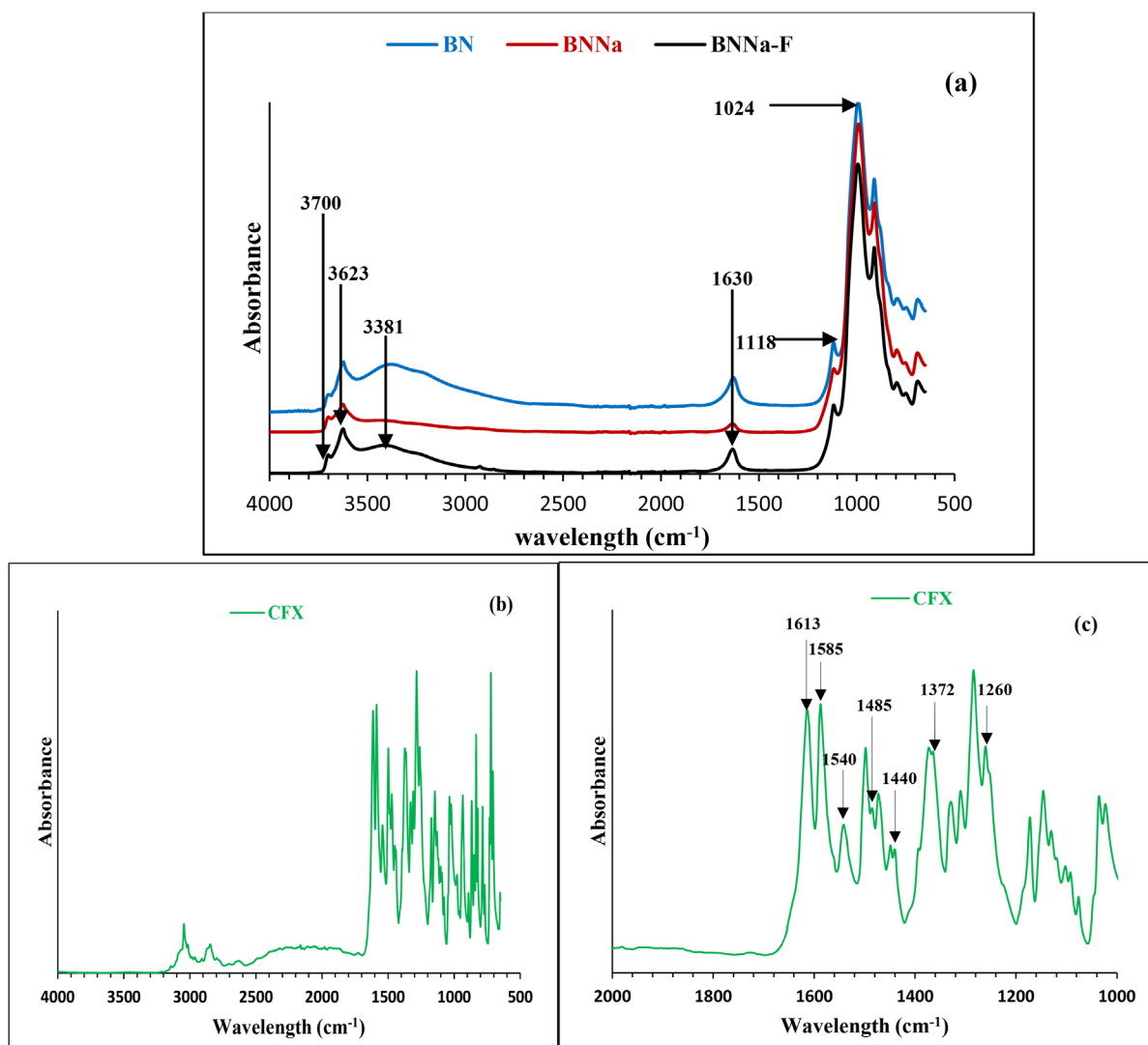
**Figure 3.** Basal distance change between raw samples and their clay-CFX forms.

the layer thick. The experimental values of interlayer space of BN-CFX, BNNa-CFX, BNNa-F-CFX are 5.71 Å, 6.01 Å and 6.52 Å respectively. Those values are smaller than the theoretical estimated value of longitudinal molecular length of CFX (8.5 Å). This presumes that after intercalation, CFX in interlayer space has been compressed by electrostatic interactions in clays. [16] The variation of the basal spacing, indicative of CFX intercalation within the clay platelets will be confirm by infrared spectroscopy results.

### 3.1.2. Fourier-Transform Infrared Spectroscopy (FTIR)

**Figure 4** shows the infrared spectra of BN, BNNa, BNNa-F (a), CFX (b and c). From raw material spectra (**Figure 4(a)**), the vibration band at  $3700\text{ cm}^{-1}$  corresponds to the elongation vibration of the -OH bond characteristic of phyllosilicate. [26] The band at  $3623\text{ cm}^{-1}$  is characteristic of internal -OH clays structure and particularly for kaolinite. The  $3381\text{ cm}^{-1}$  band corresponds to the stretching





**Figure 4.** IR spectra of (a) BN, BNNa, BNNa-F; (b) CFX; (c) CFX zooming between 2000 - 1000  $\text{cm}^{-1}$ .

vibration of -OH bond of hydration water; this band is better defined in BN than BNNa or BNNa-F because in those latter, some water molecules were displaced during saturation with NaCl. The peak at 1630  $\text{cm}^{-1}$  is attributed to in plane deformation of adsorbed water molecule. The bands at 1118  $\text{cm}^{-1}$  and 1024  $\text{cm}^{-1}$  are for stretching vibrations Si-O bond of phyllosilicates. [10] [27]

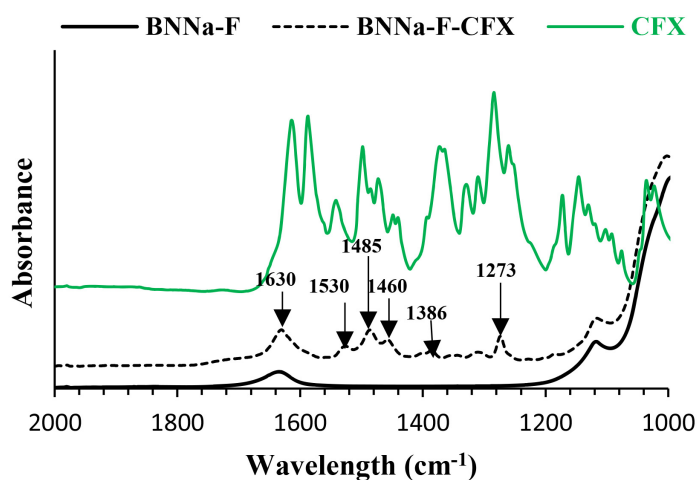
In **Figure 4(b)** and **Figure 4(c)**, important CFX characteristic bands are mostly between 1700  $\text{cm}^{-1}$  and 1200  $\text{cm}^{-1}$ . The band at 1613  $\text{cm}^{-1}$  corresponds to C=O bond of quinolones and peak at 1585  $\text{cm}^{-1}$  is due to asymmetric stretching vibration of  $\text{COO}^-$  bond; peak at 1540  $\text{cm}^{-1}$  is attributed to stretching vibration of aromatic C=C. Bands at 1485  $\text{cm}^{-1}$  and 1440  $\text{cm}^{-1}$  represent respectively stretching vibration of C-N and inclination vibration of -C-H or -C-O. Peak at 1372  $\text{cm}^{-1}$  corresponds to protonation of amino group in piperazine part. The 1260  $\text{cm}^{-1}$  band is assigned to the coupling of -C-O elongation vibration with O-H deformation of COOH. [28] [29] [30]

Due to the similarity among the IR spectra of all loaded compounds, only BNNa-F spectra and its loaded compounds BNNa-F-CFX have been presented in **Figure 5** together with that of CFX. For better visualization of changes occurred, spectra have been zoomed in CFX functional domain 2000 - 1000  $\text{cm}^{-1}$ . On the spectra of loaded materials, appearance of new bands is observed. The peak at 1613  $\text{cm}^{-1}$  (C=O stretching vibration) of CFX shifted to 1630  $\text{cm}^{-1}$  and mix up with the one (-OH inclination vibration) already presents in clay. This mixing made the peak more intense. Also, the shifting from 1613  $\text{cm}^{-1}$  in CFX to 1630  $\text{cm}^{-1}$  in the loaded sample is associated to strong interactions between C=O of CFX and the oxygen atoms of the basal surface of the clay materials. [31] The vibration at 1580  $\text{cm}^{-1}$  attributed to carboxylate  $\text{COO}^-$  disappears after adsorption certainly because of the loaded compounds elaboration conditions ( $\text{pH} < 5.9$ ) which induce the cationic form of CFX. The band at 1540  $\text{cm}^{-1}$  is attributed to stretching vibration of aromatic C=C; peaks at 1485 and 1460  $\text{cm}^{-1}$  designer respectively stretching vibration of C-N and inclination vibration of -C-H or -C-O. The displacement of the protonation vibration of amino group from 1372  $\text{cm}^{-1}$  to 1386  $\text{cm}^{-1}$  suggests existence of electrostatic attractions between protonated amino group and negative surface charges. The 1260  $\text{cm}^{-1}$  band moves to 1273  $\text{cm}^{-1}$  because of the strong hydrogen bonds between COOH and the hydroxyl surface group of montmorillonite in an acidic medium. [11]

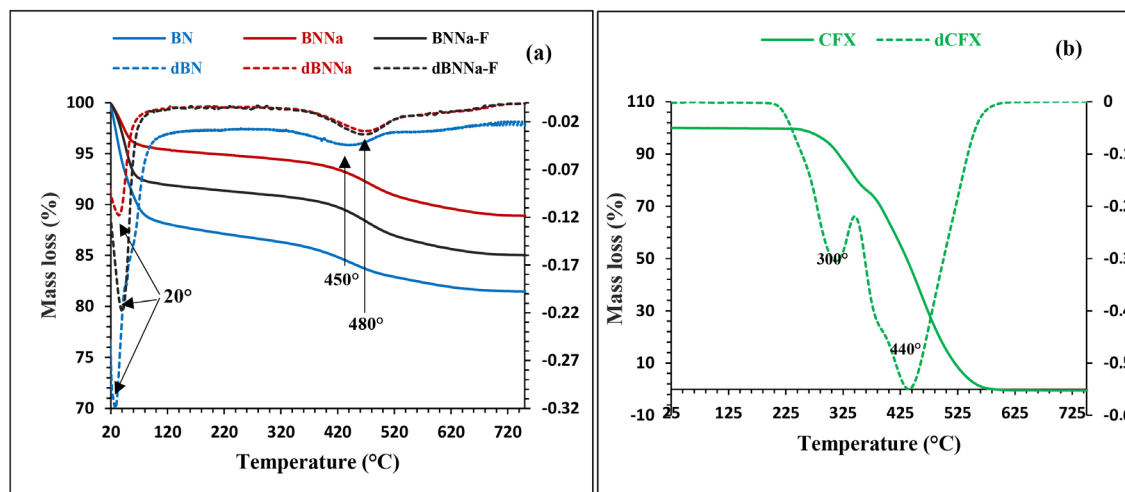
The appearance of CFX characteristic bands on the loaded compounds proves the CFX adsorption on the raw materials and indicates intercalation of CFX in the interlayer space of raw materials.

### 3.1.3. Thermogravimetric Analysis (TGA)

**Figure 6(a)** shows dTG/TG curves of clay materials. Between 20°C and 150°C, mass loss of 12.11%, 4.8% and 8.5% respectively for BN, BNNa, BNNa-F is attributed to loss of water moisture and water bound to interfoliar cations. [32] This loss is lower in Na-saturated materials than BN because of reduced intercalated water molecules as proposed from XRD. Around 430°C for BN, 470°C for



**Figure 5.** IR spectra of BNNa-F, BNNa-F-CFX and CFX (2000 - 1000  $\text{cm}^{-1}$ ).



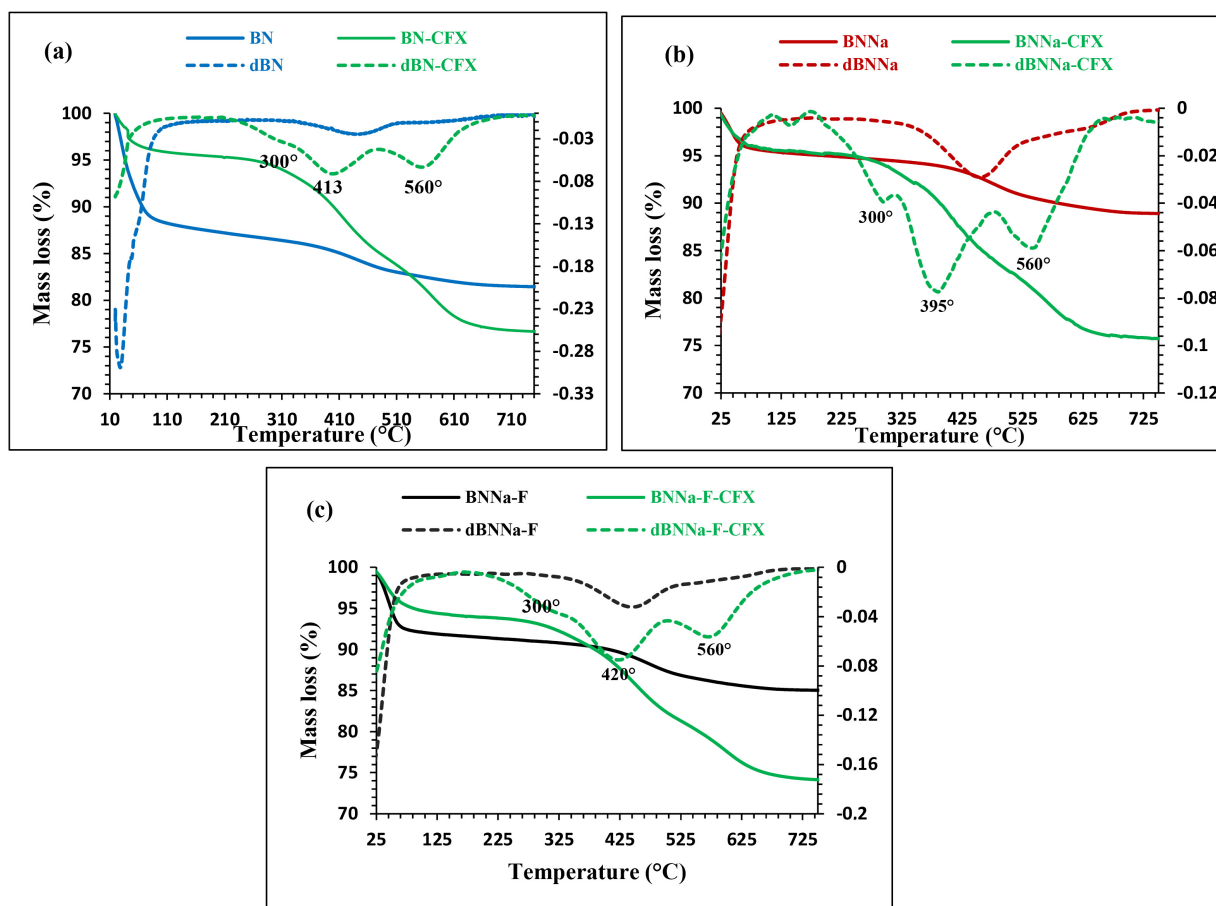
**Figure 6.** dTG/TG curves of (a) BN, BNNa, BNNa-F; (b) CFX.

BNNa and BNNa-F respectively, a maximum mass loss of 6.3%, 6.4% and 6.4% correspond to de-hydroxylation of clay minerals up to 700°C. [32] The mass loss is almost the same, which means that clay content in the prepared materials have the same structure. For CFX (**Figure 6(b)**), it is observed that maximum decomposition occurred at two different temperatures (300°C and 400°C). It is proposed that at 300°C the less stable functions such as carboxylic and amino-basic are decomposed and the most stable phenyl cycle are decomposed later around 400°C.

**Figures 7(a)-(c)** show the dTG/TG curves of clay-CFX materials. The CFX decomposition is marked by two peaks temperature around 300°C and around 400°C (413°C, 395°C, 420°C respectively for BN-CFX, BNNa-CFX and BNNa-F-CFX). Those two stages of decomposition are observed for pure CFX (see Section 3.1.3-c). Around 300°C, decomposition of CFX is accompanied by mass loss of 17%, 18% and 19.5% respectively for BN-CFX, BNNa-CFX and BNNa-F-CFX; finally, around 560°C, mass loss could be due to complete disintegration of CFX-clay structure. [1]

The comparison of the mass loss is coherent with the observed changes in basal distance from XRD which indicates increase intercalation as follow BNNa-F-CFX > BNNa-CFX > BN-CFX. The same temperature of CFX-clay structure disintegration (560°C) suggests that BN-CFX, BNNa-CFX and BNNa-F-CFX have the same structure.

As the total mass loss can be associated to CFX decomposition, the estimation of CFX mass loss at 700°C was calculated. The experimental CFX quantities have been compared to UV estimation of CFX fixed by the clay. In this way, 146 mg/g, 153.4 mg/g, 156.9 mg/g of CFX adsorbed obtained by UV estimation respectively for BN-CFX, BNNa-CFX, BNNa-F-CFX is closed to 133.5 mg/g, 147.4 mg/g, 150.7 mg/g of CFX adsorbed calculated by TGA methods. The obtained results are in agreement and the UV-visible values can be use latter for others calculations.



**Figure 7.** dTG/TG curves of (a) BN and BN-CFX; (b) BNNa and BNNa-CFX; (c) BNNa-F and BNNa-F-CFX.

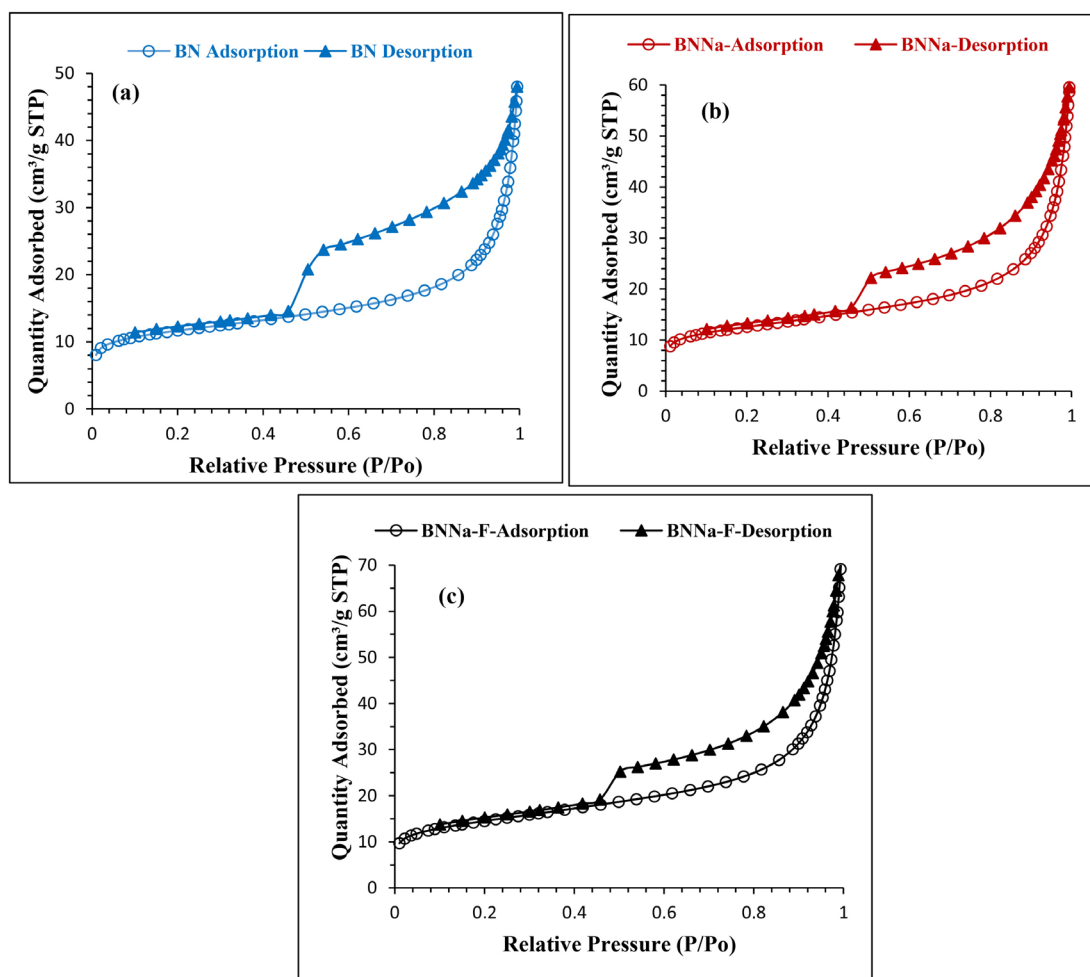
### 3.1.4. Adsorption-Desorption Isotherm and BET Surface Area

The  $N_2$  adsorption-desorption isotherms of the natural clays on **Figure 8** show very similar shapes with presence of a hysteresis that indicates existence of mesopores. [19] The measured specific surface area of BN, BNNa, BNNa-F were about 39.3  $m^2/g$ , 42.8  $m^2/g$ , 50.1  $m^2/g$  respectively. The high value for BNNa-F could be explained by the fact that this sample in the fine fraction is enriched in clay minerals. Those values of the specific surface area (SSA) are confirms the high smectite mineral content in clay. The high SSA area is important factor when the clay minerals are used in adsorption experimentations. [19]

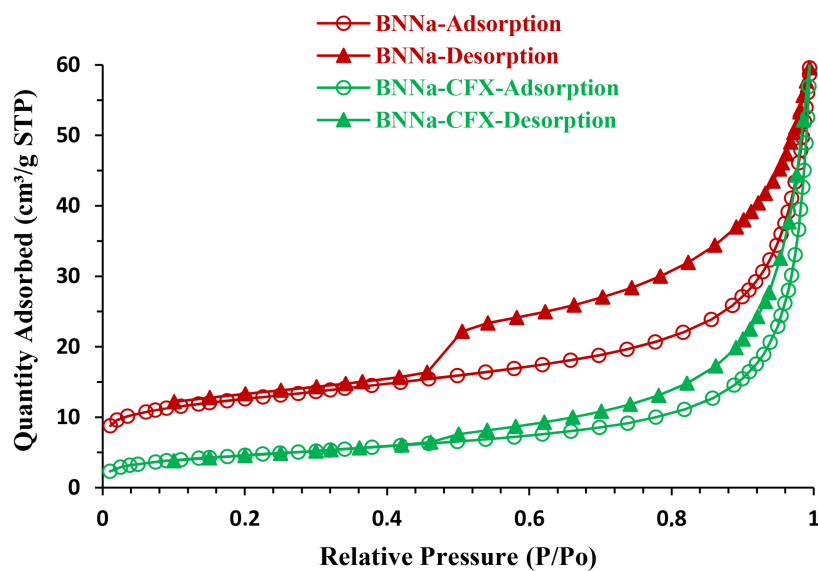
Only BNNa/BNNa-CFX adsorption-desorption shapes are reported for comparison. Measured specific area decreases from 42.8  $m^2/g$  for BNNa to 16  $m^2/g$  for BNNa-CFX apart of **Figure 9**; this decreasing could be attribute to occupation of BNNa-F pores by CFX molecules during adsorption process, expressive of CFX presence on loaded compounds.

## 3.2. Optimisation of the Clay-CFX Preparation

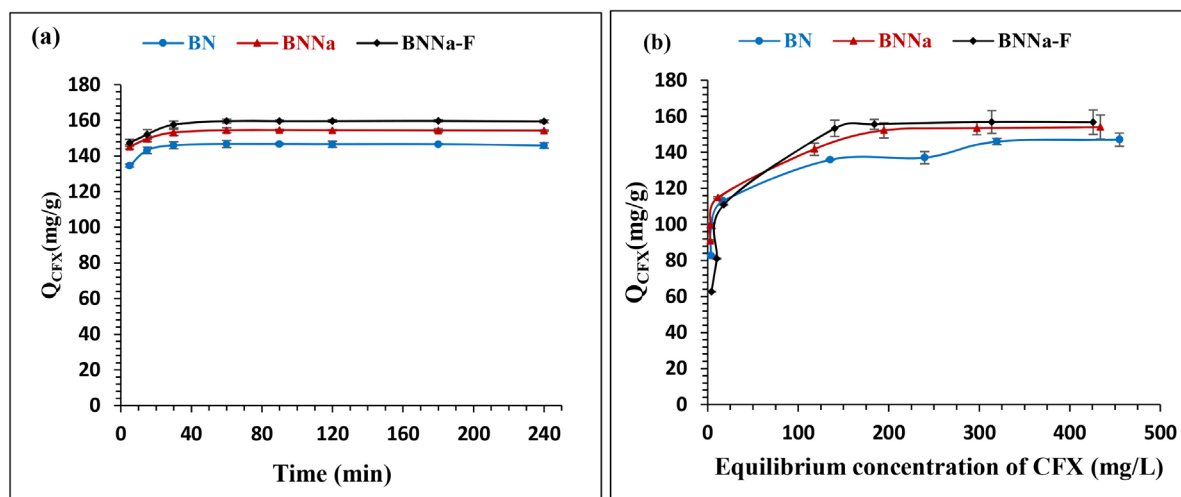
**Figure 10(a)** shows that uptake of CFX within the clay is rapid during the first 20 minutes and the equilibrium is reached after 30 min. Equilibrium is quickly reached because of the smectitic nature of clays which favoured ionic exchange



**Figure 8.**  $N_2$  adsorption-desorption isotherms of (a) BN; (b) BNNa; (c) BNNa-F. BN: raw sample; BNNa: Na-Homoionic coarse fraction of 40  $\mu m$ ; BNNa-F: Na-Homoionic form of the Fine fraction (<2  $\mu m$ ).



**Figure 9.**  $N_2$  adsorption-desorption isotherms of BNNa and BNNa-CFX. BNNa: Na-Homoionic form of BN; BNNa-CFX: CFX loaded on BNNa.



**Figure 10.** (a) Variation of the amount of CFX adsorbed as function of stirring time; (b) Change in amount of CFX fixed as function of equilibrium CFX concentration.

between  $\text{CFX}^+$  and interlayer cations. [6] A contact time of 60 min is retained as optimal time for maximum intercalation of the CFX within the clay matrix.

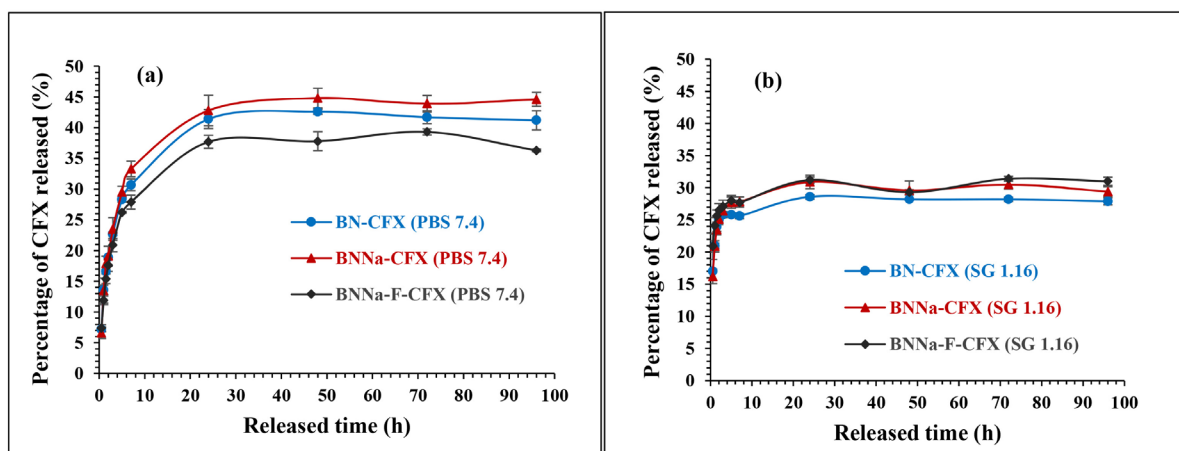
In **Figure 10(b)**, it is observed that the amount of intercalated CFX increases with the increasing of initial concentration of CFX until reaching an equilibrium amount of CFX equal to 146 mg/g, 153.4 mg/g, 156.9 mg/g respectively for BN, BNNa and BNNa-F. These values are in agreement with specific surface areas values of the precursor clays ( $39.3 \text{ m}^2/\text{g}$ ,  $42.8 \text{ m}^2/\text{g}$ ,  $50.1 \text{ m}^2/\text{g}$  respectively for BN, BNNa, BNNa-F) which predicted that quantity of CFX intercalated will be in this order  $Q(\text{BN}) < Q(\text{BNNa}) < Q(\text{BNNa-F})$ . For optimal intercalation using 1 g of the Bana clay, the CFX concentration should range between 200 mg/L to 300 mg/L.

### 3.3. Release Profiles

**Figure 11(a)** and **Figure 11(b)** show the release behaviors of CFX from clay-CFX loaded compounds in PBS (pH 7.4) and SG (pH 1.16) at  $37^\circ\text{C}$ . CFX released have been measured at 270 and 277 nm in UV-visible spectrophotometer respectively for PBS and SG.

After 1 h, 3 h, 5 h, 7 h in PBS (**Figure 11(a)**), we observe a somewhat quick release ( $\sim 13\%$ ,  $22\%$ ,  $28\%$ ,  $30\%$ ) for BN-CFX, ( $\sim 13\%$ ,  $23\%$ ,  $29\%$ ,  $33\%$ ) for BNNa-CFX and ( $\sim 12\%$ ,  $21\%$ ,  $26\%$ ,  $28\%$ ) for BNNa-F-CFX. After 7h, appears a continued and prolonged release up to 96 h ( $41\%$ ,  $43\%$ ,  $37\%$  respectively for BN-CFX, BNNa-CFX and BNNa-F-CFX). Percentage of CFX released decreased in the order of BNNa-CFX  $<$  BN-CFX  $<$  BNNa-F-CFX. This result was not attended because the CFX intercalated decreased in order BNNa-F-CFX  $<$  BNNa-CFX  $<$  BN-CFX.

In SG buffer medium (**Figure 11(b)**), the release of CFX is very fast with  $21\%$ ,  $21\%$ ,  $24\%$  respectively for BN-CFX, BNNa-CFX and BNNa-F-CFX after 1 h with an initial burst observed until 5 h. This is followed by prolonged released of  $\leq 31\%$



**Figure 11.** Release behavior of CFX from clay-hybrids compounds in: (a) PBS, pH 7.4 and (b) SG, pH 1.16 medium at 37°C.

of CFX intercalated up to 96 h. CFX released increased in order BN-CFX < BNNa-CFX < BNNa-F-CFX according to order of CFX intercalated increased BN-CFX < BNNa-CFX < BNNa-F-CFX.

The sustained release of CFX from clay-CFX loaded compounds may be due to de-intercalation of CFX intercalated from clay interlayers by ion exchange mechanism between CFX intercalated and buffer cations. [16] This ion exchange, which is an equilibrium phenomenon, may also be used to explain the first-time rapid release observed in PBS and SG mediums.

One observation that one can make is that, percentage of release for the both cases does not reach 100%. As a matter of fact, IR spectra (Figure 12 of BN-CFX and R-BN-CFX-96h (BN-CFX residue sample after 96 h of release in SG), show that characteristic peaks of CFX have decreased in intensity but are still presents on R-BN-CFX; meaning that some CFX remains intercalated in clays. This can be explained by the fact that release process by ion exchange is an equilibrium phenomenon; in that way, all interlayers cations could not be completely exchanged. [33] Nonetheless, as we can see, for all loaded compounds, CFX released is faster in SG than PBS and those releases are prolonged and continued in the time.

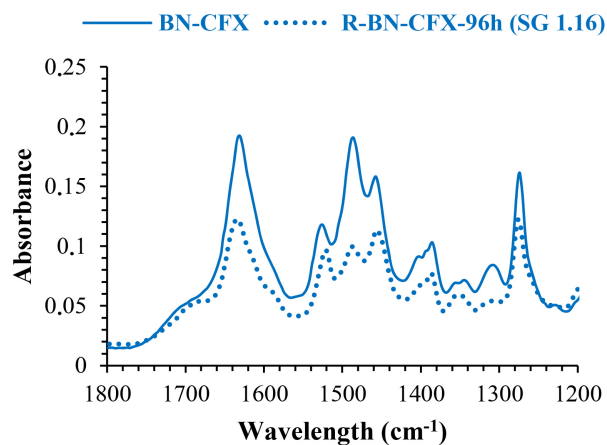
### 3.4. Bacteriological Effects of Raw and Clay-CFX Samples on *Escherichia coli* and *Staphylococcus aureus*

Figure 13 presents HPLC results of CFX releases studies from BN-CFX and BNNa-F-CFX clay-loaded compounds.

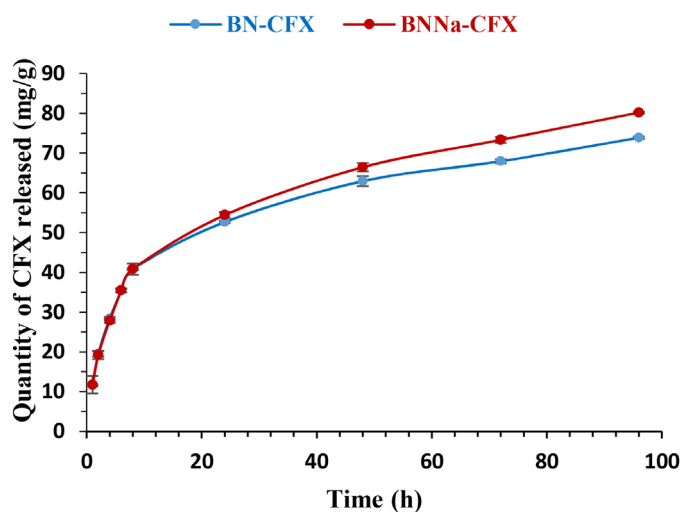
As the can be seen, CFX are continuously and progressively released over the time. So bacteriological assays can be done on those clay-loaded compounds.

Figures 14-16 present inhibition diameter of materials versus time, bacteriological results of raw clays (BN and BNa) on *Escherichia coli* and bacteriological effect of loaded samples BN-CFX and BNNa-CFX (residue obtain after 96 h of release in PBS, pH 7.4) on *Escherichia coli* (*E. coli*) and *Staphylococcus aureus* (*S. aureus*).

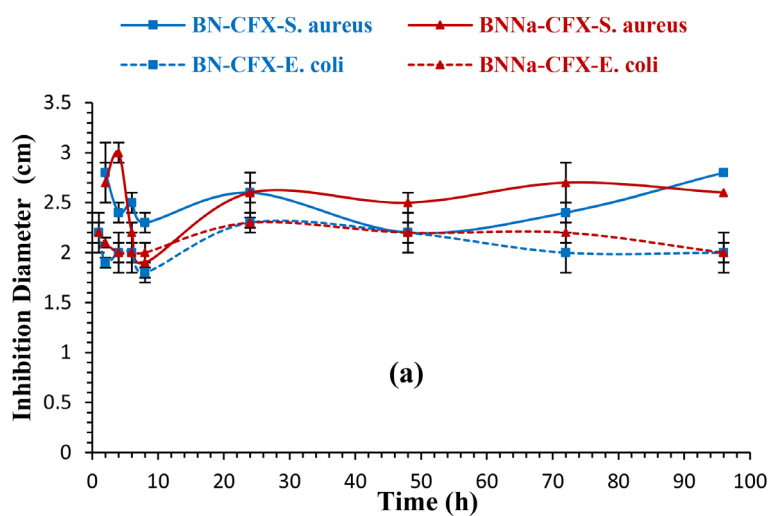




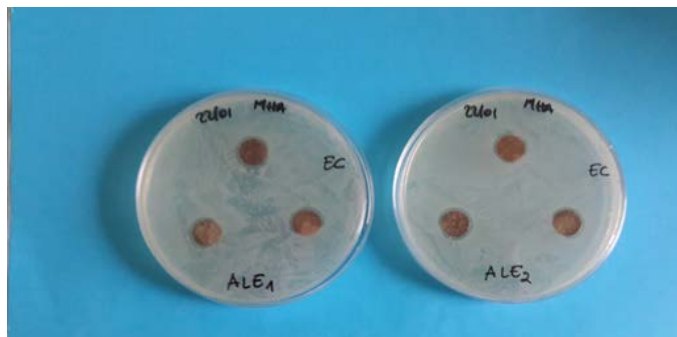
**Figure 12.** IR spectra of BN-CFX and R-BN-CFX-96h (residue of BN-CFX after 96 h of release in SG 1.16).



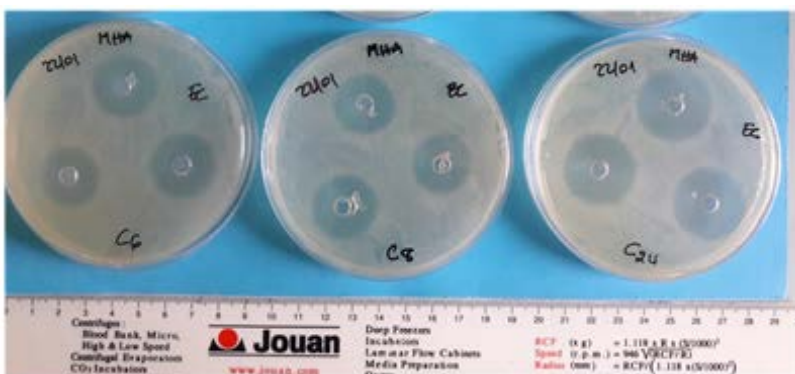
**Figure 13.** Release profiles of CFX in PBS medium followed by HPLC.



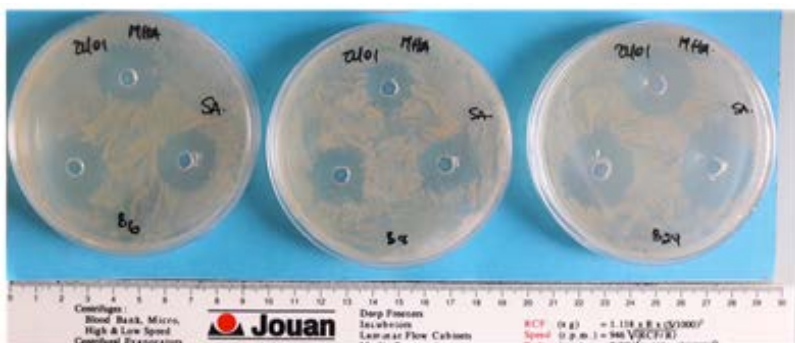
**Figure 14.** Inhibition diameter of clay-CFX loaded compounds on *Escherichia coli* and *Staphylococcus aureus* during 96 h of release in PBS pH 7.4.



**Figure 15.** Microbiological assays of raw clays without CFX on *Escherichia coli*.



(a)



(b)

**Figure 16.** Bacteriological activities of the release medium withdrawn periodically during 96 hours from CFX-loaded clays suspensions on (a) *Escherichia coli* and (b) *Staphylococcus aureus*.

The supernatant solutions in contact with the two CFX loaded clays (**Figure 14** and **Figure 16**) show a microbial activities on *E. coli* and *S. aureus* leading at inhibition radius around 2 cm, while raw clays without CFX do not show any activity (**Figure 15**): this means that the concentration of CFX liberated in the clays suspensions was above the minimal inhibition concentration (MIC), toward both bacteria strains. As one can see, over the whole study, supernatant solutions in contact with clay-CFX presents more important activity on *S. aureus* than *E. coli*. In both cases, inhibition diameter is maintained over 2 cm and do not drop after 96 hours. This can be explained by the previous release studies (see **Figure**

11) that showed that ~70% of loaded CFX remains loaded after 96 h hours of liberation, and plays the role of reservoir that constantly delivers CFX in the release medium over the MIC. The antibacterial results could not permit to differentiate performance of BN-CFX and BNNa-CFX but permit to express bacteriological effects of CFX clay-loaded on bacteria. Inhibition diameter of *E. coli* and *S. aureus* were sensibly equal regardless to the CFX released concentration.

#### 4. Conclusions

This work was dealing with the synthesis of loaded clay-CFX compounds from a smectite coming from Bana, their potential use as drug delivering system of Ciprofloxacin and their antibacterial evaluation on *Escherichia coli* (*E. coli*) and *Staphylococcus aureus* (*S. aureus*). The smectitic nature of raw clay was obvious from XRD analysis and from some physicochemical properties such as Specific surface areas (SSA).

The raw clay (BN), the homoionic form of the raw clay (BNNa) and the fine fraction of this latter (BNNa-F) have been used for preparation of loaded materials. SSA values for clay samples range as  $BN < BNNa < BNNa-F$ , have predicted that CFX intercalation will be in the order  $Q(BN) < Q(BNNa) < Q(BNNa-F)$ .

The intercalation of CFX within clay matrix was supposed from XRD analysis through the displacement of the basal distance to higher values and has been confirmed by FTIR analysis. Thermal analysis also confirmed CFX presence in the loaded clay-CFX and helped to evaluate the fiability of UV measurements of CFX quantity adsorbed. The intercalation of cationic CFX form in BN, BNNa and BNNa-F occurred very faster with equilibrium reached after 20 min. For optimal CFX concentration, maximum intercalation has been established in the range of 200 to 300 mg/L for 1 g of clay with 1h of contact time. Although the intercalation is of interest for all clay forms used in this study, homoionic forms induced increased intercalation, in comparison to the raw form, as evidenced from the evaluation of intercalated amount from both thermal and UV-vis analysis.

Enrichment of clay fraction through fine fraction extraction contributes to ameliorate amount of CFX fixed in clay-CFX loaded compounds. The proposed intercalation ratio trend from SSA value has been proven. The release of CFX from the loaded compounds was very fast in time in SG than PBS, but was greater in PBS than SG. Those released in the both dissolution media do not attend 100% evidence of equilibrium phenomenon of ion exchange during the release by de-intercalation process.

The profiles obtained with CFX release indicate a prolonged and continued release in both PBS and SG medium with an initial “burst release” observed in SG. Those profiles have been also obtained by CFX release experiments followed by HPLC. Inhibiting diameter of clay-CFX samples (~2 cm) indicated the activity of CFX loaded on *E. coli* and *S. aureus* due exclusively to CFX intercalated

because raw material did not display any effect on those bacteria. The minimal inhibition concentration in the suspension media to inhibit *E. coli* and *S. aureus* has been reached within 1 h.

From this work, evidence occurs that Bana raw clay used can easily accommodate CFX and clay-CFX compound can be used as ciprofloxacin drug delivery systems. Specific clay loaded compounds can be elaborated and used as bandage in gastrointestinal treatment or as absorbent in some cosmetic formulations.

## Acknowledgements

Feudjio Memenfo is thankful to the French Government for financing her works through the Cultural Cooperation and Action Service (SCAC) scholarship. She is also indebted to Laurence Burylo, research engineer at National Graduate School of Engineering Chemistry of Lille (ENSCL) for X-ray diffractometry analysis and Jean-Noël Staelens, laboratory technician at UMET. The author also thanks Nicolas Blanchemain, Professor at University of Lille for facilitating the access to bacteriological analysis.

## Conflicts of Interest

The authors declare no conflicts of interest regarding the publication of this paper.

## References

- [1] Kevadiya, B., Rahul, P., Mahendrapalsingh, M., Shalini, R., Harshad, B., Joshi, G., Ganga, P., Haresh, M., Pankaj, K. and Bajaj, H. (2012) Montmorillonite/Poly-( $\epsilon$ -Caprolactone) Composites as Versatile Layered Material: Reservoirs for Anticancer Drug and Controlled Release Property. *European Journal of Pharmaceutical Sciences*, **47**, 265-272. <https://doi.org/10.1016/j.ejps.2012.04.009>
- [2] Shilpa, J. and Monika, D. (2014) Naturally Occuring Clay, Montmorillonite, as a Drug Delivery Vehicle for *in Vitro* Extended Release of Venlafaxine Hydrochloride. *European Chemical Bulletin*, **3**, 672-681.
- [3] Aghamelu, O. and Okogbue, O. (2015) Characterization of Some Clays from Nigeria for Their Use in Drilling Mud. *Applied Clay Science*, **116-117**, 158-166. <https://doi.org/10.1016/j.clay.2015.08.025>
- [4] Modabberi, S., Namayandeh, A., López-Galindo, A., Viseras, C., Massimo, S. and Mohsen, R. (2015) Characterization of Iranian Bentonites to Be Used as Pharmaceutical Materials. *Applied Clay Science*, **116-117**, 193-201. <https://doi.org/10.1016/j.clay.2015.03.013>
- [5] Hou, D., Hu, S., Huang, Y., Gui, R., Zhang, L., Tao, Q., *et al.* (2016) Preparation and *in Vitro* Study of Lipid Nanoparticles Encapsulating Drug Loaded Montmorillonite for Ocular Delivery. *Applied Clay Science*, **119**, 277-283. <https://doi.org/10.1016/j.clay.2015.10.028>
- [6] Isabel Carretero, M. and Pozo, M. (2009) Clay and Non-Clay Minerals in the Pharmaceutical Industry Part I. Excipients and Medical Applications. *Applied Clay Science*, **46**, 73-80. <https://doi.org/10.1016/j.clay.2009.07.017>
- [7] Joshi, G., Kevadiya, B., Patel, A., Bajaj, H. and Jasra, V. (2009) Montmorillonite as a

- Drug Delivery System: Intercalation and *in Vitro* Release of Timolol Maleate. *International Journal of Pharmaceutics*, **374**, 53-57.  
<https://doi.org/10.1016/j.ijpharm.2009.03.004>
- [8] Joshi, G., Patel, A., Kevadiya, B. and Bajaj, H. (2009) Montmorillonite Intercalated with Vitamin B 1 as Drug Carrier. *Applied Clay Science*, **45**, 248-253.  
<https://doi.org/10.1016/j.clay.2009.06.001>
- [9] Aguzzi, C., Cerezo, P., Viseras, C. and Caramella, C. (2007) Use of Clays as Drug Delivery Systems: Possibilities and Limitations. *Applied Clay Science*, **36**, 22-36.  
<https://doi.org/10.1016/j.clay.2006.06.015>
- [10] Baek, M., Choy, J.-H. and Choi, S.-J. (2012) Montmorillonite Intercalated with Glutathione for Antioxidant Delivery: Synthesis, Characterization, and Bioavailability Evaluation. *International Journal of Pharmaceutics*, **425**, 29-34.  
<https://doi.org/10.1016/j.ijpharm.2012.01.015>
- [11] Wang, C.-J., Li, Z. and Jiang, W.-T. (2011) Adsorption of Ciprofloxacin on 2:1 Dioctahedral Clay Minerals. *Applied Clay Science*, **53**, 723-728.  
<https://doi.org/10.1016/j.clay.2011.06.014>
- [12] Wu, Q., Li, Z., Hong, H., Li, R. and Jiang, W.-T. (2013) Desorption of Ciprofloxacin from Clay Mineral Surfaces. *Water Research*, **47**, 259-268.  
<https://doi.org/10.1016/j.watres.2012.10.010>
- [13] Chen, H., Gao, B., Yang, L.-Y. and Ma, L.Q. (2015) Montmorillonite Enhanced Ciprofloxacin Transport in Saturated Porous Media with Sorbed Ciprofloxacin Showing Antibiotic Activity. *Journal of Contaminant Hydrology*, **173**, 1-7.  
<https://doi.org/10.1016/j.jconhyd.2014.11.010>
- [14] Hamilton, A., Hutcheon, G., Roberts, M. and Gaskell, E. (2014) Formulation and Antibacterial Profiles of Clay-Ciprofloxacin Composites. *Applied Clay Science*, **87**, 129-135. <https://doi.org/10.1016/j.clay.2013.10.020>
- [15] Rivera, A., Valdés, L., Jiménez, J., Pérez, I., Lam, A., Altshuler, E., Ménorval, L., Fossum, J., Hansen, E. and Rozynek, Z. (2016) Smectite as Ciprofloxacin Delivery System: Intercalation and Temperature-Controlled Release Properties. *Applied Clay Science*, **124-125**, 150-156. <https://doi.org/10.1016/j.clay.2016.02.006>
- [16] Kevadiya, B., Rajkumar, S., Bajaj, H., Chettiar, S., Gosai, K., Brahmabhatt, H., Bhatt S., Barvaliya, K., *et al.* (2014) Biodegradable Gelatin-Ciprofloxacin-Montmorillonite Composite Hydrogels for Controlled Drug Release and Wound Dressing Application. *Colloids and Surfaces B: Biointerfaces*, **122**, 175-183.  
<https://doi.org/10.1016/j.colsurfb.2014.06.051>
- [17] Rapacz-Kmita, A., Stodolak-Zych, E., Ziabka, M., Rozycka, A. and Dudek, M. (2015) Instrumental Characterization of the Smectite Clay-Gentamicin Hybrids. *Bulletin of Materials Science*, **38**, 1069-1078.  
<https://doi.org/10.1007/s12034-015-0943-7>
- [18] Kariminia, S., Shamsipur, A. and Shamsipur, M. (2016) Analytical Characteristics and Application of Novel Chitosan Coated Magnetic Nanoparticles as an Efficient Drug Delivery System for Ciprofloxacin. Enhanced Drug Release Kinetics by Low-Frequency Ultrasounds. *Journal of Pharmaceutical and Biomedical Analysis*, **129**, 450-457. <https://doi.org/10.1016/j.jpba.2016.07.016>
- [19] Mache, J. (2013) Minéralogie et propriétés physico-chimiques des smectites de Bana et Sabga (Cameroun). Utilisation dans la décoloration d'une huile végétale alimentaire. Thèse de Doctorat, Université de Liège, Liège, 143 p.
- [20] Carabineiro, S.A.C., Thavorn-Amornsri, T., Pereira, M.F.R., Serp, P. and Figueiredo, J.L. (2012) Comparison between Activated Carbon, Carbon Xerogel and Carbon

- Nanotubes for the Adsorption of the Antibiotic Ciprofloxacin. *Catalysis Today*, **186**, 29-34. <https://doi.org/10.1016/j.cattod.2011.08.020>
- [21] Carrado, K., Decarreau, A., Petit, S., Bergaya, F. and Lagaly, G. (2006) Synthetic Clay Minerals and Purification of Natural Clays. In: Bergaya, F., Theng, B.K.G. and Lagaly, G., Eds., *Handbook of Clay Science*, Vol. 1, Elsevier, Amsterdam, 115-139. [https://doi.org/10.1016/S1572-4352\(05\)01004-4](https://doi.org/10.1016/S1572-4352(05)01004-4)
- [22] Lagaly, G. (2006) Colloid Clay Sciences. In: Bergaya, F., Theng, B.K.G. and Lagaly, G., Eds., *Handbook of Clay Science*, Vol. 1, Elsevier, Amsterdam, 141-245.
- [23] Thiry, M., Carrillo, N., Franke, C. and Martineau, N. (2013) Technique de préparation des minéraux argileux en vue de l'analyse par diffraction des rayons-X et introduction à l'interprétation des diagrammes. <https://hal-mines-paristech.archives-ouvertes.fr/hal-00872214>
- [24] Youboue, K., Bongoua-Devisme, A., Kouadio, K. and Yao-Kouame, A. (2014) Minéralogie de la fraction argileuse des sols brunifiés de Kahankro et Anikro (Toumodi) dans le Centre Sud de la Côte d'Ivoire. *International Journal of Biological and Chemical Sciences*, **8**, 1269-1280. <https://doi.org/10.4314/ijbcs.v8i3.40>
- [25] Bergaya, F. and Lagaly, G. (2006) General Introduction: Clays, Clay Minerals and Clay Science. In: Bergaya, F., Theng, B.K.G. and Lagaly, G., Eds., *Handbooks of Clay Science*, Vol. 1, Elsevier, Amsterdam, 1-18. [https://doi.org/10.1016/S1572-4352\(05\)01001-9](https://doi.org/10.1016/S1572-4352(05)01001-9)
- [26] Karym, H., El Mahi, C.M., Benmokhtar, S., Belaouad, S. and Moutaabbid, M. (2015) Characterization of the Kaolinite Clay Minerals (Nador-North Morocco) Using Infrared Spectroscopy and Calorimetry of Dissolution. *International Journal of Recent Scientific Research*, **6**, 4444-4448.
- [27] Hou, D., Gui, R., Hu, S., Huang, Y., Feng, Z. and Ping, Q. (2015) Preparation and Characterization of Novel Drug-Inserted Montmorillonite Chitosan Carriers for Ocular Drug Delivery. *Advances in Nanoparticles*, **4**, 70-84. <https://doi.org/10.4236/anp.2015.43009>
- [28] Wu, Q., Li, Z., Hong, H., Yin, K. and Tie, L. (2010) Adsorption and Intercalation of Ciprofloxacin on Montmorillonite. *Applied Clay Science*, **50**, 204-211. <https://doi.org/10.1016/j.clay.2010.08.001>
- [29] Stojvovij, A., Tajber, L., Paluch, J., Djuri, Z., Paroj J. and Corrigan I. (2014) Biopharmaceutical Characterization of Ciprofloxacin-Metallic Ion Interactions: Comparative Study into the Effect of Aluminium, Calcium, Zinc and Iron on Drug Solubility and Dissolution. *Acta Pharmaceutica*, **64**, 77-88. <https://doi.org/10.2478/acph-2014-0007>
- [30] Chang, P.-H., Jiang, W.-T., Li, Z., Kuo, C.-Y., Wu, Q., Jean, J.-S., et al. (2016) Interaction of Ciprofloxacin and Probe Compounds with Palygorskite PFI-1. *Journal of Hazardous Materials*, **303**, 55-63. <https://doi.org/10.1016/j.jhazmat.2015.10.012>
- [31] Jiang, W.-T., Wang, C.-J. and Li, Z. (2012) Intercalation of Ciprofloxacin Accompanied by Dehydration in Rectorite. *Applied Clay Science*, **74**, 74-80. <https://doi.org/10.1016/j.clay.2012.07.009>
- [32] Bentahar, Y. (2017) Caractérisation physico-chimique des argiles marocaines: Application à l'adsorption de l'arsenic et des colorants cationiques en solution aqueuse. Thèse de Doctorat, Université de Nice-Sophia Antipolis, Nice, 170 p.
- [33] Lal, S. and Datta, M. (2014) Organoclay Pluronic F68-Montmorillonite, as a Sustainable Release Drug Delivery Vehicle for Propranolol Hydrochloride. *European Chemical Bulletin*, **3**, 593-604.