



**HAL**  
open science

## Electrophysiological responses of the movement-related tactile gating in blindness

Maria Casado-Palacios, Alessia Tonelli, Claudio Campus, Monica Gori

► **To cite this version:**

Maria Casado-Palacios, Alessia Tonelli, Claudio Campus, Monica Gori. Electrophysiological responses of the movement-related tactile gating in blindness. European Conference on Visual Perception, Aug 2023, Paphos, Cyprus. hal-04192983

**HAL Id: hal-04192983**

**<https://hal.univ-lille.fr/hal-04192983v1>**

Submitted on 31 Aug 2023

**HAL** is a multi-disciplinary open access archive for the deposit and dissemination of scientific research documents, whether they are published or not. The documents may come from teaching and research institutions in France or abroad, or from public or private research centers.

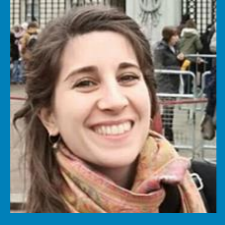
L'archive ouverte pluridisciplinaire **HAL**, est destinée au dépôt et à la diffusion de documents scientifiques de niveau recherche, publiés ou non, émanant des établissements d'enseignement et de recherche français ou étrangers, des laboratoires publics ou privés.



Distributed under a Creative Commons Attribution - NonCommercial - NoDerivatives 4.0 International License

# Electrophysiological responses of the movement-related tactile gating in blindness

1 UVIP- Unit for visually impaired people Italian Institute of Technology, Italy  
2 DIBRIS, University of Genoa, Italy  
3 University of Sydney, Australia



Casado-Palacios M.1,2,



Tonelli A.1,3,



Campus C. 1,



Gori M.1



## Introduction

During self-generated movement the cortex suppresses or attenuates somatosensory feedback. In typical adults, the diminished tactile feedback can lead to a worse encoding that can be compensated through different strategies [1,2,3]. However, vision seems to impact the phenomenon, with blind individuals showing reduced tactile reliability during active touch compared to its passive form. Electrophysiological insights of the movement-related tactile gating in the sighted population, using peripheral nerve stimulation, suggest the presence of cortical oscillations in the alpha, beta and gamma ranges affected by the active condition [4]. **How the neurophysiological EEG responses in the time-frequency domains are affected by the lack of vision during active touch?**

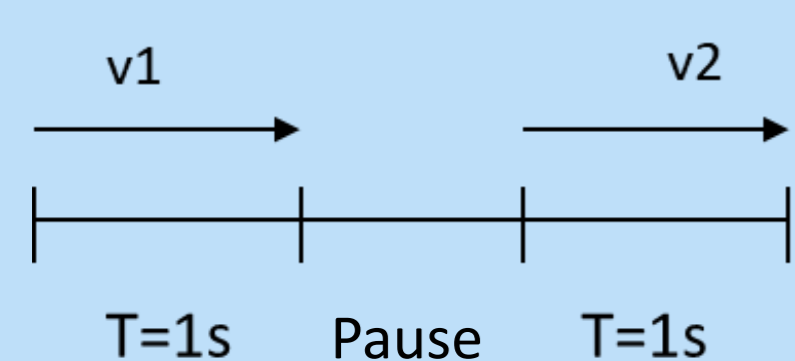
## Method

### Participants:

8 sighted (4 men; age mean 27) and 9 blind individuals (5 men; age mean 40)

### Task:

**2AFC** – Sequence of two movement with different speeds - discriminate which was faster between the two.



Standard velocity: 3 cm/s  
Comparison speed: QUEST [6]

### Conditions:

**Passive touch**  
**Active touch**

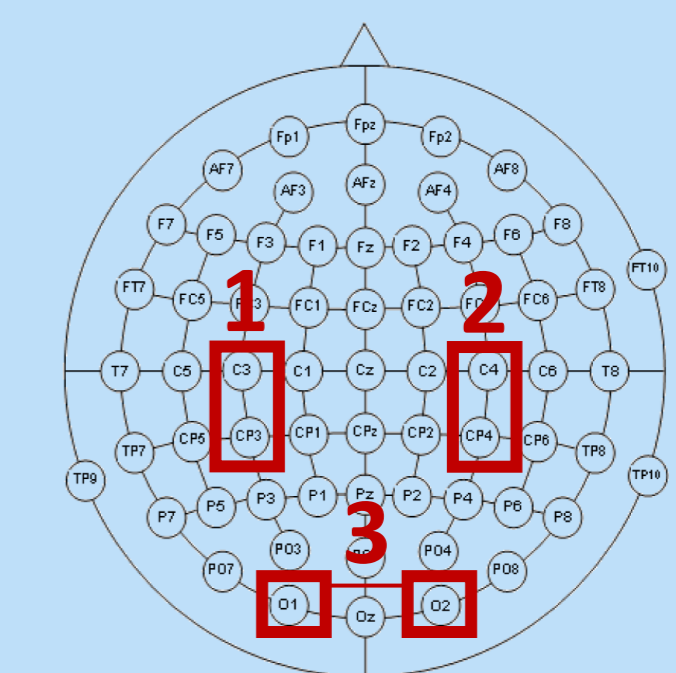
### EEG analysis:

Biosemi Active Two.  
64 EEG channels + 4 EOG  
2048 Hz sampling frequency.  
Notch filter: Center 50 Hz; Span: 5 Hz  
Bandpass filter: 0.16 – 100 Hz  
Epoching: -500 – 1000 ms

### Stimulation:

-Tactile stimulus: 10 cycles/cm  
-Tactile area of stimulation: fingertip of index

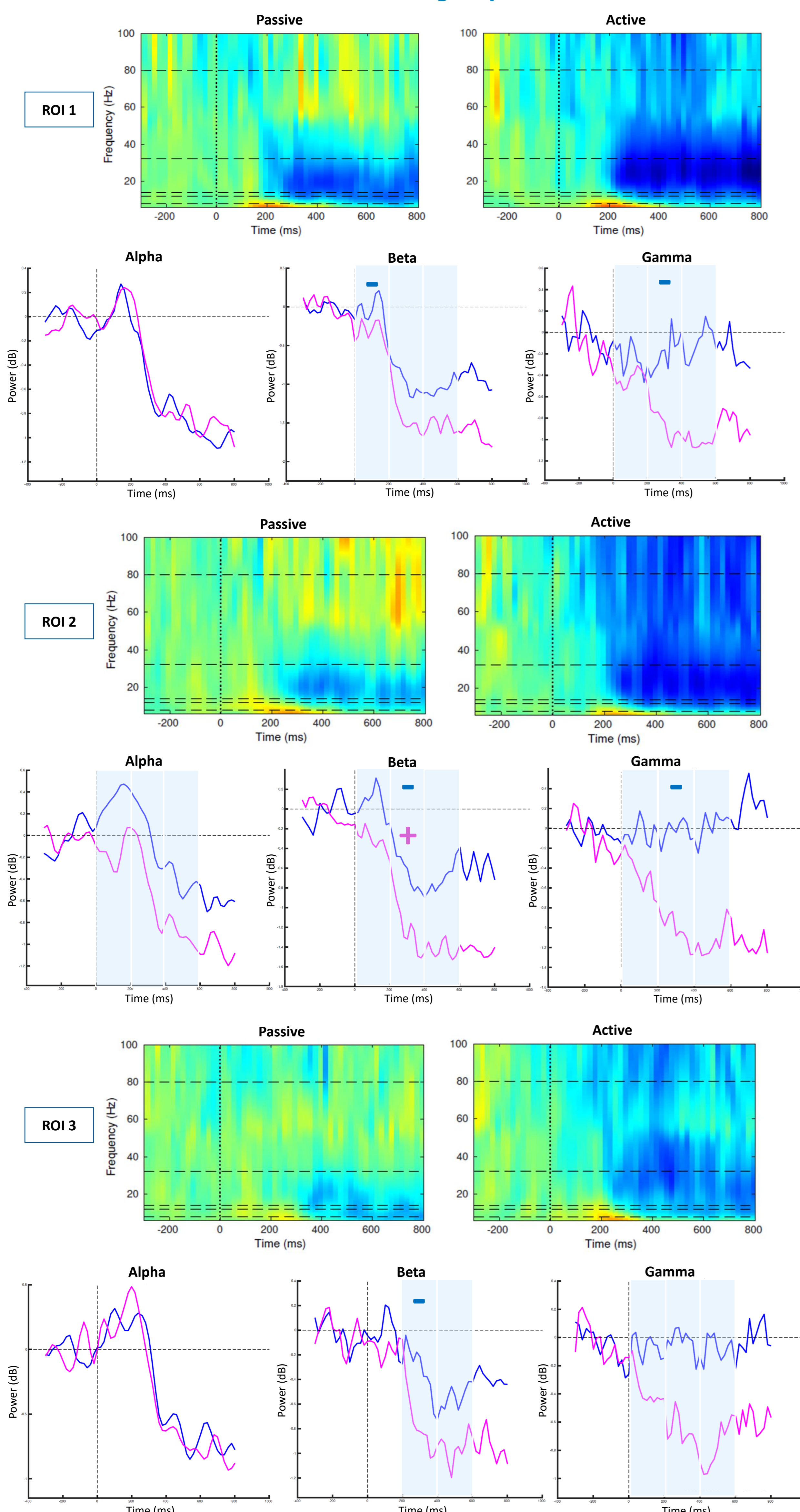
Baseline: -500 – 0 ms  
0 = start stimulation  
Wavelet transform: from 6 Hz-100 Hz with 0.5 Hz resolution.  
**Alfa** (8-12Hz), **Beta** (14-32Hz), **gamma** (32-80Hz)  
TWs: 0-200 ms; 200-400 ms; 400-600ms



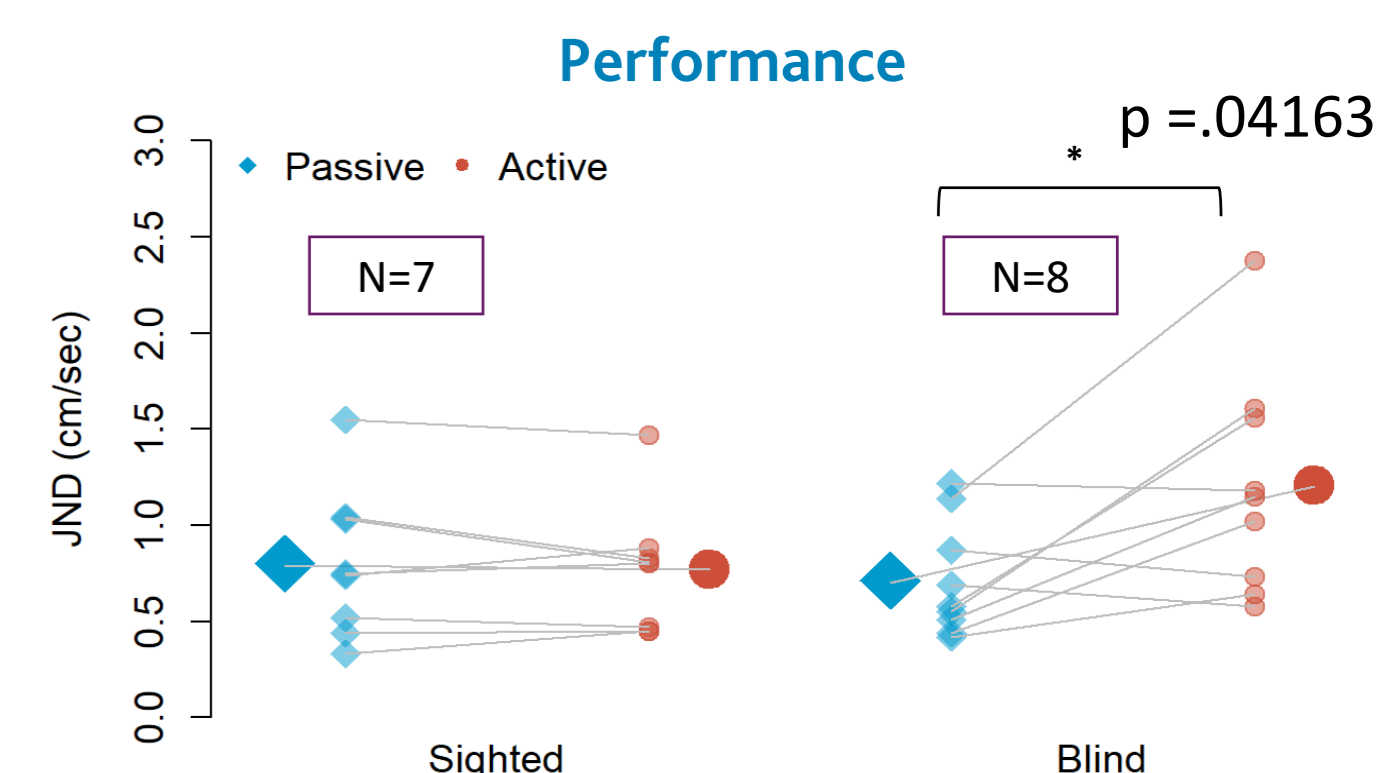
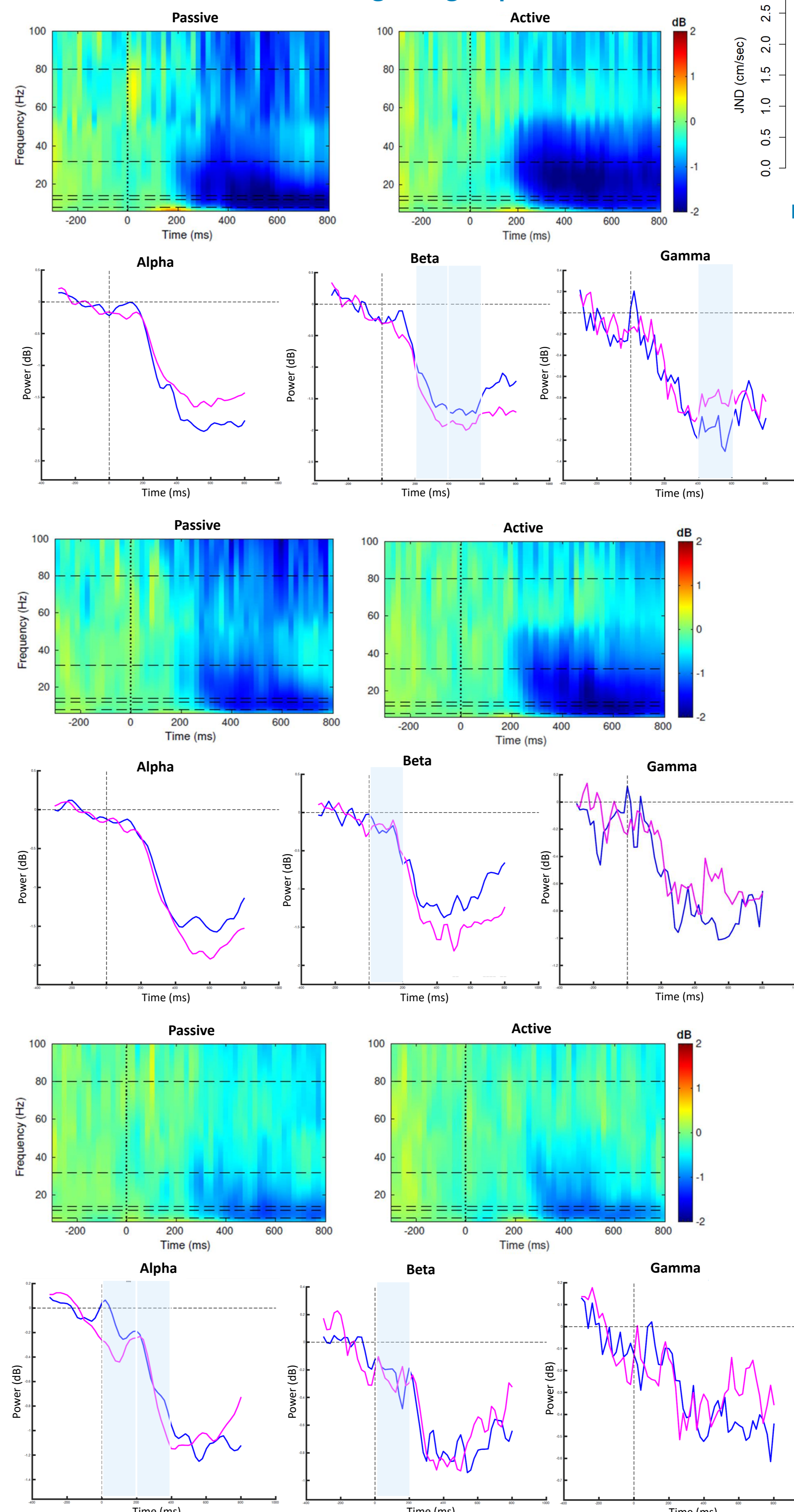
(1) Sensory-motor cortex contralateral  
(2) Sensory-motor cortex ipsilateral  
(3) Occipital

## Results

### Blind group



### Sighted group



In agreement with Casado-Palacios et al. (submitted)

### Note:

- Passive (blue line), Active (pink line)
- Significant difference between Active and Passive conditions (blue bar)
- Positive correlation between desynchronization and JND (higher desynchronization → higher JND) during the active condition (+)
- Negative correlation between desynchronization and JND (higher desynchronization → lower JND) during the passive condition (-)

## Conclusions

- Blind group:**
  - Robust modulations by the condition (passive/active).
  - Association between cortical oscillations and performance change dramatically between the passive and active conditions, showing an inverse pattern in the correlations.
- Sighted group:**
  - Light modulation by the condition.
  - Correlations with performance are absent.

This suggests that somatosensory processing by the cortex is strongly modulated by active touch in blind individuals.

maria.casado@iit.it  
www.iit.it/ U-Vip



## Acknowledgments

This project has been funded by the European Union's Horizon 2020 Research and Innovation Programme under Grant Agreement No 860114

## References

- Chapman, C.E., Tremblay, F., & Ageranioti-Bélanger, S.A. (1996). Role of Primary Somatosensory Cortex in Active and Passive Touch. *Hand and Brain*, 5(1), 329–347.
- Chapman, C. E. (1994). Active versus passive touch: Factors influencing the transmission of somatosensory signals to primary somatosensory cortex. *Canadian Journal of Physiology and Pharmacology*, 72(5), 558–570.
- Kurz, M. J., Wiesman, A. I., Coolidge, N. M., & Wilson, T. W. (2018). Haptic exploration attenuates and alters somatosensory cortical oscillations. *Journal of Physiology*, 596(20), 5051–5061. <https://doi.org/10.1113/jp276263>
- Gehring, J. E., Arpin, D. J., VerMaas, J. R., Trevarrow, M. P., Wilson, T. W., & Kurz, M. J. (2019). The Strength of the Movement-related Somatosensory Cortical Oscillations Differ between Adolescents and Adults. *Scientific Reports*, 9(1), 1–9. <https://doi.org/10.1038/s41598-019-55004-1>