



HAL
open science

Pulmonary Effects of Adjusting Tidal Volume to Actual or Ideal Body Weight in Ventilated Obese Mice.

Elise Guivarch, Guillaume Voiriot, Anahita Rouze, Stephane Kerbrat, Jeanne Tran-van Nhieu, Philippe Montravers, Bernard Maitre, Armand Mekontso Dessap, Mathieu Desmard, Jorge Boczkowski

► **To cite this version:**

Elise Guivarch, Guillaume Voiriot, Anahita Rouze, Stephane Kerbrat, Jeanne Tran-van Nhieu, et al.. Pulmonary Effects of Adjusting Tidal Volume to Actual or Ideal Body Weight in Ventilated Obese Mice.. Scientific Reports, 2018, Scientific Reports, 8, pp.1-10. 10.1038/s41598-018-24615-5 . hal-04316545

HAL Id: hal-04316545

<https://hal.univ-lille.fr/hal-04316545>

Submitted on 30 Nov 2023

HAL is a multi-disciplinary open access archive for the deposit and dissemination of scientific research documents, whether they are published or not. The documents may come from teaching and research institutions in France or abroad, or from public or private research centers.

L'archive ouverte pluridisciplinaire **HAL**, est destinée au dépôt et à la diffusion de documents scientifiques de niveau recherche, publiés ou non, émanant des établissements d'enseignement et de recherche français ou étrangers, des laboratoires publics ou privés.

SCIENTIFIC REPORTS



OPEN

Pulmonary Effects of Adjusting Tidal Volume to Actual or Ideal Body Weight in Ventilated Obese Mice

Elise Guivarch^{1,2,3}, Guillaume Voiriot^{1,4,5}, Anahita Rouzé^{1,6}, Stéphane Kerbrat¹, Jeanne Tran Van Nhieu⁷, Philippe Montravers^{2,11}, Bernard Maitre^{1,5,8,9}, Armand Mekontso Dessap^{5,9}, Mathieu Desmard^{2,10} & Jorge Boczkowski^{1,9}

Obese patients could be more susceptible to mechanical ventilation (MV)-induced lung injury than non-obese patients due to weight-dependent changes in lung properties. The aim of this study was therefore to evaluate the pulmonary effects of 2 hours low V_T MV in a diet-induced obese mice model, with V_T calculated on either the actual body weight (V_{Taw}) or the ideal body weight (V_{Tiw}). First, we hypothesized that a MV with V_{Taw} would be associated with altered lung mechanics and an increased lung inflammation. Second, we hypothesized that a MV with a V_{Tiw} would preserve lung mechanics and limit lung inflammation. We analyzed lung mechanics and inflammation using bronchoalveolar lavage (BAL) cell counts, flow cytometry tissue analysis and histology. Lung mechanics and inflammation were comparable in control and obese mice receiving V_{Tiw} . By contrast, obese mice receiving V_{Taw} had significantly more alterations in lung mechanics, BAL cellularity and lung influx of monocytes as compared to control mice. Their monocyte expression of Gr1 and CD62L was also increased. Alveolar neutrophil infiltration was significantly increased in all obese mice as compared to controls. In conclusion, our findings suggest that protective MV with a V_{Taw} is deleterious, with a marked alteration in lung mechanics and associated lung inflammation as compared to lean mice. With V_{Tiw} , lung mechanics and inflammation were close to that of control mice, except for an increased alveolar infiltrate of polymorphonuclear neutrophils. This inflammation might be attenuated by a blunted recruitment of inflammatory cells associated with obesity.

Over the last several decades, the worldwide prevalence of obesity has steadily risen, reaching 36% in the United States in 2010¹. Consequently, the number of obese inpatients requiring mechanical ventilation (MV), either in intensive care units or in the operating room, is increasing.

MV with excessive lung stress and strain may induce pulmonary adverse effects, called “ventilator-induced lung injury (VILI)”, due to barotrauma, volutrauma, atelectotrauma and biotrauma^{2–4}, leading to increased mortality in patients with the acute respiratory distress syndrome (ARDS)⁵. Some evidence has suggested that high tidal volume (V_T) may also be deleterious for patients with a healthy lung^{6,7}, even for short periods of ventilation, as during general anesthesia^{8–10}. Recent guidelines recommend limiting V_T to 6 to 8 mL/kg of ideal body weight

¹INSERM U955, Université Paris Est (UPEC), Faculté de Médecine, 94000, Créteil, France. ²AP-HP, HU Hôpital Bichat-Claude Bernard, Département d’anesthésie-réanimation, 75018, Paris, France. ³Hôpital Paris Saint Joseph, Service d’anesthésie, 75014, Paris, France. ⁴AP-HP, HU Hôpital Tenon, Service de réanimation, 75020, Paris, France. ⁵Université Paris Est Créteil (UPEC), Faculté de Médecine de Créteil, IMRB, GRC CARMAS, Créteil, 94000, France. ⁶CHU Lille, Centre de Réanimation, Lille, 59000, France. ⁷UPEC and AP-HP, HU Henri Mondor, Département de pathologie, 94000, Créteil, France. ⁸AP-HP, HU Hôpital Henri Mondor, DHU A-TVB, Antenne de Pneumologie, 94000, Créteil, France. ⁹AP-HP, HU Hôpital Henri Mondor, DHU A-TVB, Service de réanimation médicale, 94000, Créteil, France. ¹⁰Centre hospitalier sud francilien, Service de réanimation, 91100, Corbeil-Essonnes, France. ¹¹INSERM UMR 1152, Faculté de médecine Paris Diderot Paris 7, 94000, Paris, France. Correspondence and requests for materials should be addressed to E.G. (email: eguivarch@hpsj.fr)

	NVC (n = 22)	VC (n = 24)	NVO (n = 21)	OV _T aw (n = 19)	OV _T iw (n = 21)
Weight (g)	31.0 [29.5–32.1]	30.8 [29.2–32.2]	40.8 [37.7–42.6]	42.0 [39.3–48.3]	41.2 [38.6–45.3]
BMI (g/cm ²)	0.31 [0.30–0.33]	0.31 [0.30–0.32]	0.39 [0.37–0.41]	0.43 [0.39–0.46]	0.41 [0.38–0.44]

Table 1. Weight characteristics of the mice in the various groups. Mann-Whitney test and Kruskal-Wallis test were not significant between the control groups and between the obese groups, respectively. BMI: Body Mass Index.

	NVC (n = 9–11)	NVO (n = 9–11)	<i>p</i>
BAL cell count (cells/mL)	80,000 [68,300–95,556]	73,333 [64,444–88,889]	0.60
BAL neutrophil (cells/mL)	444 [0–683]	0 [0–433]	0.16
Macrophages (10 ³ cells/lungs)	519 [394–723]	560 [499–1018]	0.11
Neutrophils (10 ³ cells/lungs)	882 [453–2,083]	1,374 [912–2,555]	0.36
Monocytes (10 ³ cells/lungs)	246 [115–636]	375 [230–534]	0.34
Histologic inflammation score	3.0 [2.5–7.5]	9.0 [6.0–11.0]	0.08

Table 2. Characteristics of pulmonary inflammation in control and obese mice before ventilation. Pulmonary inflammation was characterized by BAL cell counts, number of inflammatory cells counted by flow cytometry and a histologic inflammation score. BAL: Bronchoalveolar lavage.

(IBW) in patients with ARDS¹¹, which tend to be extended to all critically ill patients¹² and a $V_T < 10$ mL/kg of IBW has also been recommended during anesthesia^{13,14}.

Despite the increasing number of ventilated obese patients, no specific study has been published concerning these characteristics of MV. Guidelines advocate the use of the IBW to calculate the V_T , but the formulas are unfamiliar to medical doctors and are not fully integrated into current practice. Indeed, it has been recently demonstrated that obesity is a risk factor for being ventilated with a large V_T (> 10 mL/kg of IBW)^{15,16}, with an increased risk of secondary ARDS in obese ICU patients¹⁷.

Moreover, obese patients might be more susceptible to VILI, even when ventilated with a low V_T , because of both mechanical and biological characteristics of this condition. Firstly, obese individuals have a lower thoraco-pulmonary compliance because of fatty infiltration of the chest, which induces increased airway pressures, and their lungs may be not uniformly inflated during MV because of greater basal atelectasis¹⁸. Secondly, obesity is associated with a baseline low-grade inflammatory status, which might increase vulnerability to bio-trauma^{19–21}. Thus, low serum adiponectin levels have been shown to promote acute lung injury in obese mice²². It can therefore be hypothesized that obese subjects may be more prone to MV-associated lung injuries than non-obese subjects, with low V_T ventilation calculated on actual weight or even calculated on IBW. However, to the best of our knowledge, this hypothesis has not been previously investigated despite the important implications in terms of public health given the continuously growing prevalence of obesity.

The aim of this study was therefore to evaluate the pulmonary effects of low V_T MV in a diet-induced obese mice model, with V_T calculated on either the actual body weight or the ideal body weight. First, we hypothesized that a MV with a V_T calculated on the actual body weight would be associated with altered lung mechanics and an increased lung inflammation. Second, we hypothesized that a MV with a V_T calculated on the ideal body weight would preserve lung mechanics and limit lung inflammation as compared to a V_T calculated on the actual body weight. Some of our results have been previously reported in abstract form²³.

Results

Diet-induced obesity model. After the 12-week feeding period, the weight and BMI of all mice fed a high-fat diet (non-ventilated obese (NVO) + obese mice ventilated with V_T based on actual weight (OV_Taw) + obese mice ventilated with V_T based on ideal weight (OV_Tiw)) was higher than that of mice fed a low-fat diet (non-ventilated controls (NVC) + ventilated controls (VC)): 41.1 [38.6–45.9]g vs 30.9 [29.5–32.1]g, $p < 0.0001$. Their body mass index (BMI) was also increased (0.40 [0.38–0.44] vs 0.31 [0.30–0.32] g/cm², $p < 0.0001$) (Table 1).

Baseline characteristics of obese and control mice. Pulmonary inflammation, assessed by BAL cell counts, histologic score and inflammatory cells in lung tissue quantified by flow cytometry, did not differ between NVO and NVC mice (Table 2). Alveolar permeability, assessed by the BAL protein concentration, was also similar in the two groups (196 [183–228] in NVO mice vs 198 [188–226] µg/mL in NVC mice, $p = 0.84$). Lung mechanics measured at the beginning of the ventilation period showed that obese (OV_Tiw) and control (VC group) mice displayed similar compliance (125 [115–131] vs 123 [111–127] µL/cmH₂O, $p = 0.49$). After recruitment maneuvers, obese mice (OV_Tiw and OV_Taw) had higher peak and mean airway pressures than VC mice and OV_Taw mice had higher peak and mean airway pressures than OV_Tiw mice (Fig. 1).

Lung mechanics during MV. Because the mean weight of VC mice was used to calculate the V_T applied in OV_Tiw mice, the two groups had an identical V_T of 0.241 [0.230–0.252] mL, which was significantly lower than the V_T received by OV_Taw mice (0.331 [0.304–0.376]mL, $p < 0.0001$). Lung mechanics slightly deteriorated

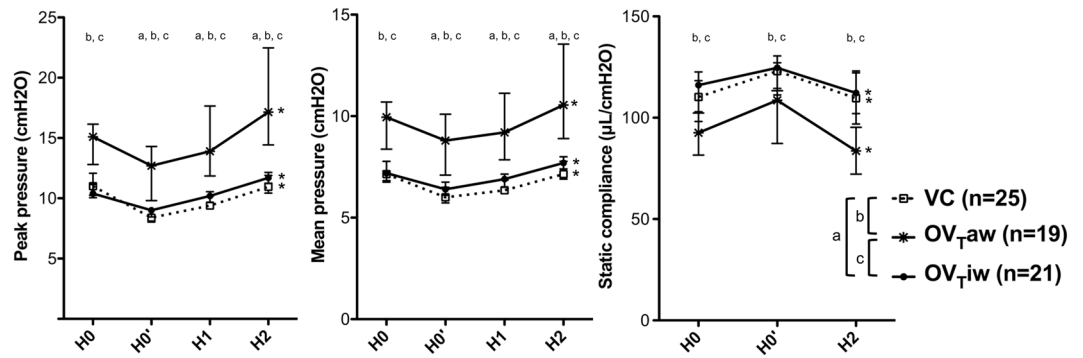


Figure 1. Variations of peak pressure, mean pressure and static compliance during the two hours of ventilation. H0: On connection of the ventilator, H0': after recruitment maneuver, H1: after one hour of ventilation, H2: after 2 hours of ventilation. a, b and c denote a p value (Mann-Whitney pairwise comparisons after Kruskal-Wallis test) <0.05 for the following pairwise comparisons: for VC vs OV_{Taw}, VC vs OV_{Tiw} and OV_{Taw} vs OV_{Tiw}, respectively. *Denotes p value (Mann-Whitney pairwise comparison) <0.05 between H2 and H0' in each group ($n = 19$ – 25 per group).

during the 2-hour MV period in the 3 ventilated groups, with an increase in airway pressures and a decrease in respiratory system compliance (Fig. 1). Deterioration of lung mechanics during the MV period was more pronounced in the OV_{Taw} group, with a Δ H2-H0' higher for peak and mean airway pressures ($p = 0.00015$ vs VC and OV_{Tiw}) and lower for the respiratory system compliance ($p = 0.04$ vs VC and $p = 0.02$ vs OV_{Tiw} after corrections for multiple testing).

BAL fluid cell counts and protein concentration. Inflammatory cells in BAL fluid were almost exclusively macrophages (Fig. 2). The global cell count and the differential cell count of macrophages did not differ between VC and OV_{Taw} groups. There was a higher global cell count in the OV_{Taw} group as compared to the VC and NVO groups ($p = 0.0287$ and 0.0238 after correction for multiple testing, respectively). These cells were macrophages and neutrophils, as macrophages and neutrophils cell counts were higher in the OV_{Taw} group as compared to the NVO group ($p = 0.0455$ and 0.0434 , respectively) and tend to be higher as compared to the VC group ($p = 0.0959$ and 0.0602 after correction for multiple testing, respectively). The BAL protein concentration did not differ between the three groups (Fig. 2).

Inflammatory cell subpopulations and their activation by flow cytometry in lung tissue. Both obese and control mice exposed to MV displayed higher monocyte and neutrophil counts in lung tissue, compared to non-ventilated mice (VC vs NVC, OV_{Taw} vs NVO and OV_{Tiw} vs NVO comparisons). Similar macrophage counts were observed in the ventilated and non-ventilated groups. Within ventilated mice, we observed a higher monocyte count in lung tissue of OV_{Taw} group (but not OV_{Tiw} animals) as compared to the VC group. Macrophage and neutrophil counts in lung tissue were not significantly different between the three ventilated groups (OV_{Taw}, OV_{Tiw} and VC groups), but neutrophils also tend to be higher in OV_{Taw} as compared to VC ($p = 0.0602$ after correction for multiple testing) (Fig. 3).

Concerning the degree of activation of the inflammatory cells, no difference in neutrophil CD11b and CD62L expression was observed between the 3 ventilated groups (Fig. 4d,e). In contrast, high monocyte activation was observed in OV_{Taw} mice, as the expression of Gr-1 on monocytes was higher in the OV_{Taw} group than in both the NVO and OV_{Tiw} groups. Moreover, the expression of CD62L on monocytes was higher in the OV_{Taw} group than in the NVO group, whereas no difference was observed between the VC and NVC groups on one hand and between the OV_{Tiw} and NVO groups on the other hand (Fig. 4a,b). Interestingly, Gr-1 expression on monocytes was less intense in OV_{Tiw} mice than in VC mice (Fig. 4a).

Quantification of lung tissue neutrophil infiltration. Ventilated mice displayed higher neutrophil infiltration in the lungs compared to non-ventilated mice (VC vs NVC, OV_{Taw} vs NVO and OV_{Tiw} vs NVO) (Fig. 5). This lung injury was particularly marked in obese mice, as the histologic score was higher in both the OV_{Taw} and OV_{Tiw} groups compared to the VC group. No significant difference was observed between the OV_{Taw} and OV_{Tiw} groups. Figure 5 represents the values of the histologic score and Fig. 6 shows representative sections of alveolar neutrophil infiltration.

Discussion

This study shows that ventilating obese mice with a V_T calculated on their actual weight is deleterious, with a broader alteration of ventilatory mechanics, BAL total cell count, monocyte cell count and activation in lung tissue.

When V_T was calculated using the actual weight, ventilatory mechanics were considerably impaired compared to ventilated controls, achieving the highest airway pressures and lowest compliance at H2. This cannot be explained *a priori* by more atelectasis, as these obese mice were subjected to the same level of PEEP. The

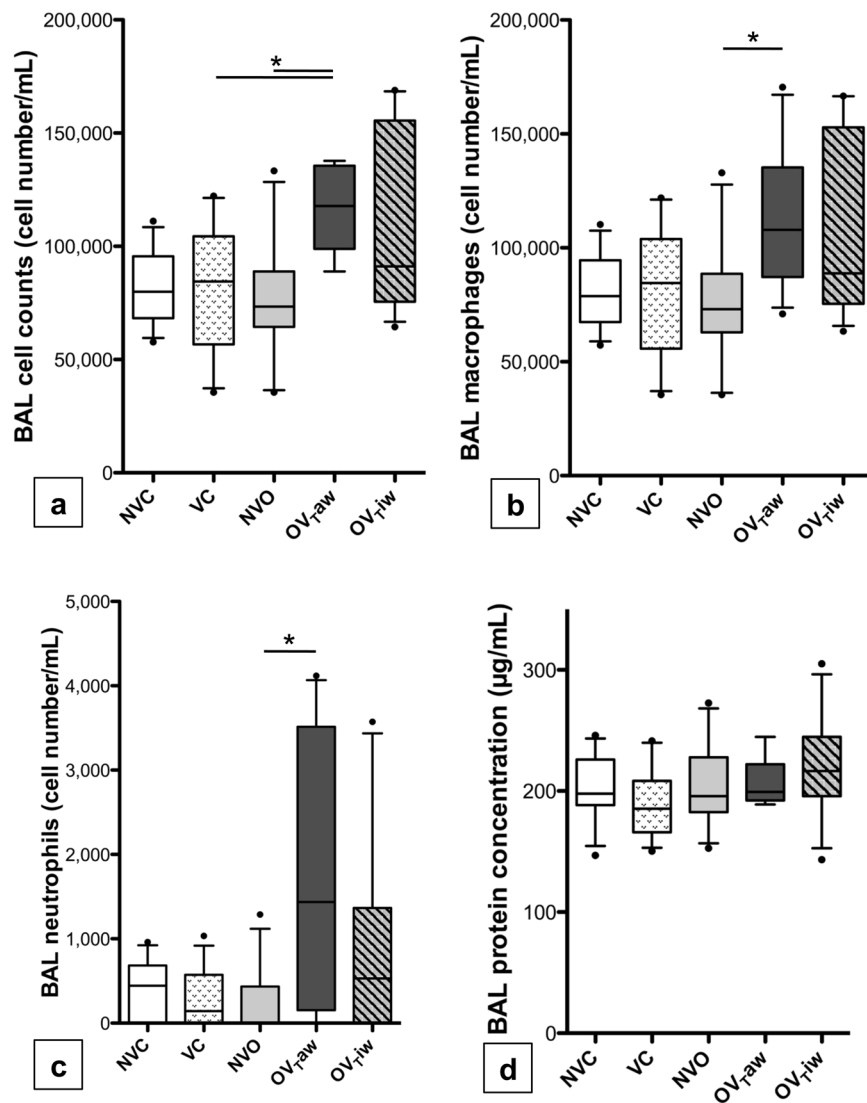


Figure 2. (a) Bronchoalveolar lavage (BAL) cell counts in the 5 groups of mice. (b,c) Number of macrophages (b) and neutrophils (c) in BAL. (d) BAL protein concentration. * $p < 0.05$ between the 2 groups after correction for multiple comparisons ($n = 13-14$ per group).

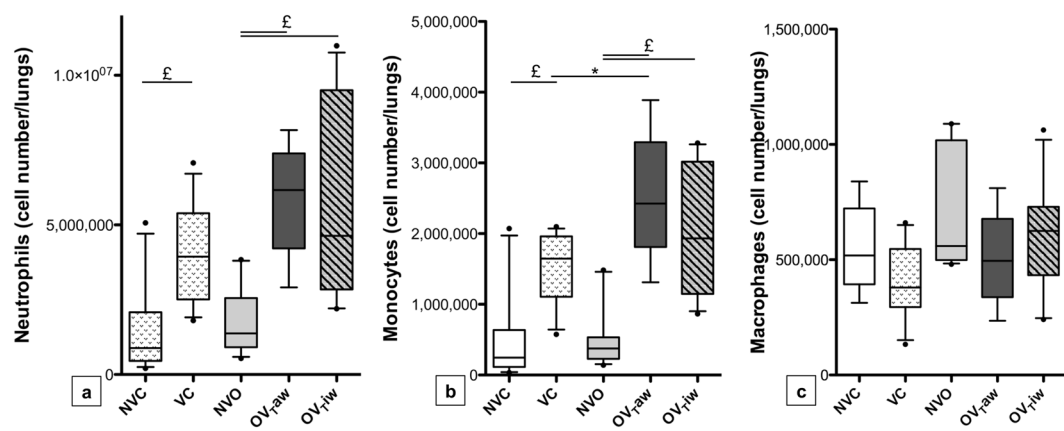


Figure 3. Numbers of neutrophils (a), monocytes (b) and macrophages (c) observed by flow cytometry in lung tissue in the 5 groups of mice. * $p < 0.05$; £ $p < 0.01$ ($n = 8-13$ per group).

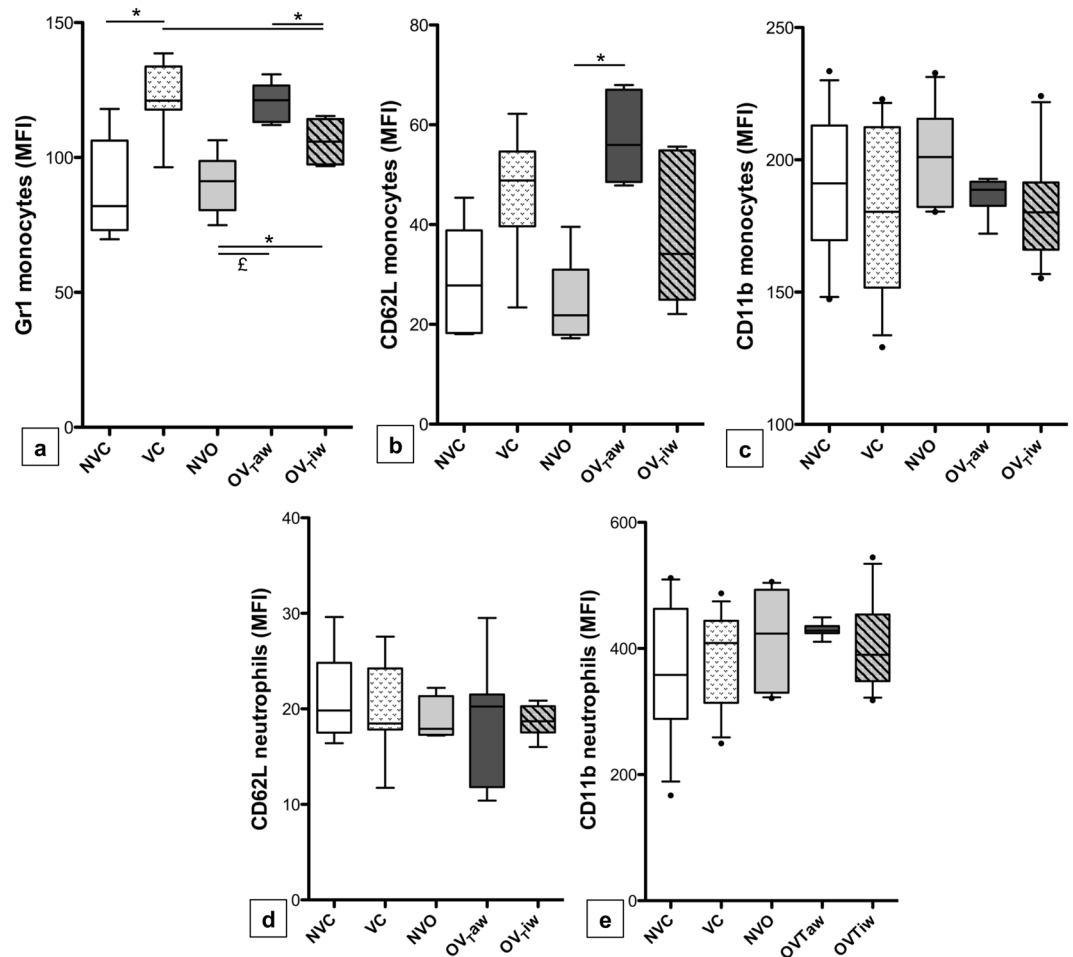


Figure 4. Gr-1 (a), CD62L (b) and CD11b (c) expression on pulmonary monocytes and CD62L (d) and CD11b (e) expression on pulmonary neutrophils expressed as mean fluorescent intensity (MFI). * $p < 0.05$, £ $p < 0.01$ ($n = 8-13$ per group).

most likely hypothesis is the presence of interstitial and alveolar edema, thereby inducing alveolar rigidity and decreased compliance, which may correspond to an early manifestation of ventilator-induced lung injury²⁴ in OV_{Taw} mice. Although we did not demonstrate increased alveolar-capillary permeability in this group, it displayed increased BAL total cell count. Analysis on flow cytometry revealed an increase in recruited monocytes as compared to VC, and the number of neutrophils also tends to be higher. Moreover, monocytes of OV_{Taw} displayed more intense L-selectin expression as compared to their non-ventilated counterparts, whereas no difference was observed between VC and OV_{Tiw} mice on one hand and VC and NVC on the other hand. Wilson *et al.*²⁵ have previously shown that aggressive ventilation (35 mL/kg of V_T in their model) and, to a lesser extent, protective ventilation, induced an influx of immature Gr-1^{high} monocytes from the bone marrow. These monocytes also overexpressed L-selectin, allowing them to migrate out of the bloodstream into the lung. Similar results were observed in our study, highlighting the harmful effect of a supposed “protective” V_T calculated using the actual weight of obese mice. On histologic examination, we also demonstrated increased alveolar inflammation in OV_{Taw} mice, with a higher neutrophil infiltration score compared to VC mice. The lack of significant increase in neutrophil by cytometry could be due to the short duration of the experiment (2 hours) that did not allow monocytes time to differentiate into neutrophils and/or the lack of infectious challenge.

Obese mice ventilated with a V_T calculated using the ideal body weight had lung mechanics and inflammation parameters close to control mice except for a higher alveolar infiltration of neutrophils on histological score, which was similar to OV_{Taw}, and a lower Gr-1 expression on monocyte. The decrease in most inflammatory parameters in the OV_{Tiw} group as compared to OV_{Taw} may be ascribed to the reduction in V_T with the use of ideal weight, but the higher neutrophilic alveolar infiltration on histological score do not corroborate this hypothesis. An alternative hypothesis, supported by some publications, could be a role of obese phenotype in this decreased monocyte activation, as obese individuals appear to present a degree of immune deficiency, with delayed secretion of cytokines and recruitment of inflammatory cells in response to stimulation by a pathogen^{26,27}, which could explain decreased activation of monocytes in OV_{Tiw} mice compared to VC mice, while alveolar infiltration by inflammatory cells was increased. Recent reports have highlighted abnormal diapedesis in obese mice exposed to inhalation of LPS²⁸ or ovalbumin²⁹ with increased influx of neutrophils and eosinophils in blood and lung tissue, but decreased BAL cell counts and cytokines. This phenomenon could also explain our

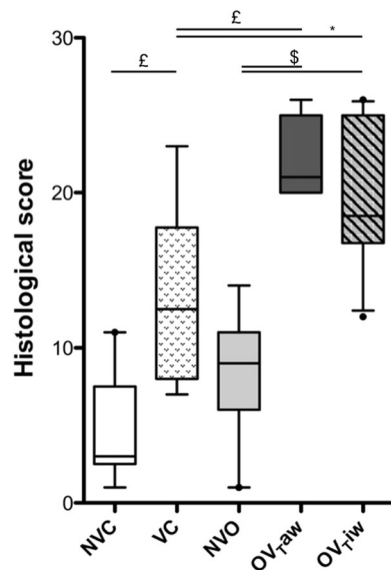


Figure 5. Alveolar neutrophil infiltration represented by a histologic score in the 5 groups ($n = 7-10$ per group). * $p < 0.05$; £ $p < 0.01$; \$ $p < 0.001$.

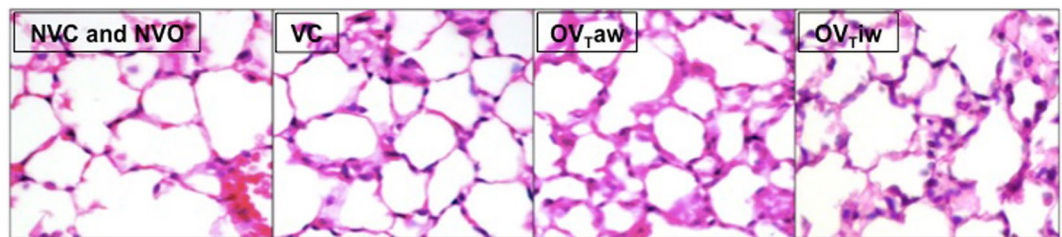


Figure 6. Representative 5 μm sections of alveolar neutrophil infiltration. Hematoxylin-eosin staining, 40-fold magnification NVC or NVO: low or no infiltration, VC: moderate infiltration, OV_{Taw} and OV_{Tiw}: significant neutrophil infiltration.

finding of excess neutrophils observed in the alveolar walls, but not in the BAL of OV_{Tiw} mice. Overall, our findings may suggest that protective ventilation in obese subjects, even when V_T is calculated using the IBW, induces an increased lung inflammation as compared to that observed in lean subjects, but this inflammation could be attenuated by a blunted recruitment of inflammatory cells associated with obesity.

This study presents several limitations. First, we used a short (2 hours) MV. However, a short period (2 to 3 hours) of low V_T MV was shown to cause lung inflammation and edema in uninjured mice³⁰, whereas a short period of high V_T MV was shown to provide much more lung injury³¹⁻³³. Second, we used a minimal PEEP (1.5 cmH_2O). This might be criticized since numerous investigations encourage to use higher PEEP in the operating room, especially in obese patients³⁴. However, other teams applied a similar low PEEP (below 2 cmH_2O) during short MV in mice^{32,35,36}. Here, with a PEEP settled at 1.5 cmH_2O , we observed a slight deterioration of lung mechanics over the MV period. Indeed, the static compliance after 2 hours of MV was closed to that one recorded at time of connexion to the ventilator in both the VC and OV_{Tiw} groups. In another work by our group, we showed that the dynamic compliance decreased below the H0 value after 3 hours of mechanical ventilation in uninjured mice³⁷. Therefore, a 1.5 cmH_2O PEEP looked suitable in such a low- V_T short MV applied to uninjured mice. Third, our model of obesity was induced by diet, with a moderate weight gain, as compared to some genetic models³⁸. This moderate weight gain may have precluded highlighting meaningful differences between obese and control groups. However, this model is much closer to clinical reality in humans and genetic models like *ob/ob* and *db/db* type could not be used in this study, as these animals present early weight gain that induces an abnormal development of the lungs, leading to a twofold lower lung volume than in control mice³⁹. This discrepancy would have induced a major bias in the interpretation of the ventilatory mechanics. Fourth, we used the mean weight of control mice to calculate the ideal weight of obese mice. However, no formula is available to calculate IBW in mice. In addition, the naso-anal length of obese and control mice was similar in our study (*data not shown*). Fifth, some of our results (BAL cell count and flow cytometry neutrophils comparisons) were no longer statistically significant after correction for multiple testing, due to the low number of animals and the number of study groups. However, the corrected p values were “marginally significant”; overall, our results suggested that, with a short-term ventilation, the conjunction of obesity and a V_T calculated on the actual weight induce

a significant alveolar inflammation. Finally, we did not use an infectious challenge like lipopolysaccharide, that could mimic the clinical scenario in intensive care where pneumonia is a major cause of mechanical ventilation. This lack of infectious challenge could in part explain the absence of enhanced inflammatory state in diet-induced obese mice at baseline before starting mechanical ventilation, like previously described in this model⁴⁰. However, other studies have demonstrated the absence of overt lung inflammation in unchallenged obese mice^{41,42}. Further experimental studies are needed to assess the exact impact of mechanical ventilation using the actual vs ideal body weight in terms of recruitment and migration of inflammatory cells (which could be blunted in obese individuals) and when using an infectious challenge like lipopolysaccharide.

Our study has some clinical implications. These data suggest systematically calculating the IBW of obese patients, both in intensive care and in the operative room, even for short periods of ventilation. However, further studies are required to assess the exact impact of protective mechanical ventilation on the IBW of obese subjects, as it appears to induce more marked pulmonary inflammation compared to controls, but the presence of secondary lesions must be determined. A deficiency in the recruitment and migration of inflammatory cells in obese subjects could also play a protective role against lung injury induced by inflammation secondary to mechanical ventilation. At present, clinical studies investigating the morbidity and mortality of ventilated obese subjects, often retrospective and comprising numerous biases, especially disparities between the management of obese and non-obese patients, have reported contradictory results^{5,43–46}. Acute lung injury or ARDS may also have been over-diagnosed due to poor quality radiographs or undiagnosed atelectasis.

In conclusion, we herein demonstrate, for the first time, the harmful effect of a two hours ventilation strategy with tidal volume of 8 mL/kg calculated on the actual weight in obese mice. When the tidal volume was calculated using the ideal weight, lung mechanics and inflammation were close to that of control mice, except for an increased alveolar infiltrate of neutrophils on histology. Further studies are needed to determine the effect of protective ventilation based on IBW on the morbidity and mortality of these patients.

Material and Methods

Additional details on the methods are provided online (see supplementary information file, SIF).

Animal protocol. Five-week-old male C57/Bl6 mice were purchased from the Janvier laboratory (Le Genest-Saint-Isle, France) and were housed in our “small animal” facility. They received one week of adaptation with their usual food. At the age of 6 weeks, they were divided into two groups. One group (control group) received a diet in which 10% of the calories were derived from fat in the form of lard (D12450B, SSNIF, Soest, Germany), while the other group (obese group) was fed a diet in which 60% of the calories were derived from fat in the form of lard (D12492, SSNIF). Both groups were given food and water *ad libitum* and were exposed to a 12:12 h light-dark cycle. At the age of 18 weeks and after 12 weeks of the diet, animals were weighed and then fasted for 12 hours with free access to water before the experimentation. The body mass index (BMI) was calculated as previously described formula: $BMI = \text{weight (g)} / (\text{naso-anal length (cm)})^{2.47}$. Mice were then anesthetized with intraperitoneal pentobarbital (30 µg/g of body weight, Hospira, Meudon La Forêt, France) followed by continuous 1.5% isoflurane (Abbott, Rungis, France). The larynx was surgically exposed and the trachea was intubated orally under direct vision with a metal cannula (inner diameter of 1 mm, Harvard Apparatus, Les Ulis, France). The tracheal cannula was properly secured with surgical thread (Ethicon 3–0, Ethicon, Auneau, France) before connection to mechanical ventilator in order to avoid leaks.

Mechanical ventilation. After intubation, animals were left for 5 min in spontaneous breathing and half of the mice (obese and control) were sacrificed. The other half of were ventilated by means of a small-animal ventilator (flexiVent, Scireq, Montreal, Canada) as follows: $V_T = 8 \text{ mL/kg}$ of body weight, respiratory rate = 180/min, end-expiratory pressure = 1.5 cmH₂O, and inspired fraction of oxygen = 0.4–0.6. This combination of V_T (8 ml/kg) and respiratory rate (180/min) has been shown to produce adequate minute ventilation and PaCO₂ in mice⁴⁸. Mechanical ventilation lasted 2 hours with continuous anesthesia maintained by 1.5% isoflurane and muscle paralysis using intraperitoneal pancuronium at the onset of the experiment (0.8 mg/kg of body weight, Organon, Puteaux, France) to ensure passive mechanical conditions. Body temperature was monitored using a rectal probe and was maintained at 36.5 °C with a blanket connected to a homeothermic regulator (Homeo-blanket system 50–7221 F, Harvard Apparatus, Les Ulis, France). Mice received one intraperitoneal warm fluid bolus (physiological serum) at the onset of the experiment (20 mL/kg of body weight). The dosage of all medications administered was calculated on actual weight. In ventilated obese mice, tidal volume was calculated either on actual weight or ideal weight. As no formula is available to calculate predicted body weight in mice, ideal weight was based on the mean weight of control mice (namely 31.2 g) (see SIF for details).

Experimental design. The experimental design included five groups: NVC (non-ventilated control mice), VC (ventilated control mice), NVO (non-ventilated obese mice), OV_{Taw} (ventilated obese mice with V_T calculated on the actual weight) and OV_{Tiw} (ventilated obese mice with V_T calculated on an ideal weight) (Fig. 7). The number of animals used in each experiment is detailed in the legend of all result table or figure.

Respiratory mechanics. Mean and peak airway pressures were recorded at initiation of mechanical ventilation and then hourly throughout the experimental period. Quasi-static compliance of the respiratory system was determined from a continuous pressure-volume curve performed at initiation of mechanical ventilation and at the end of MV.

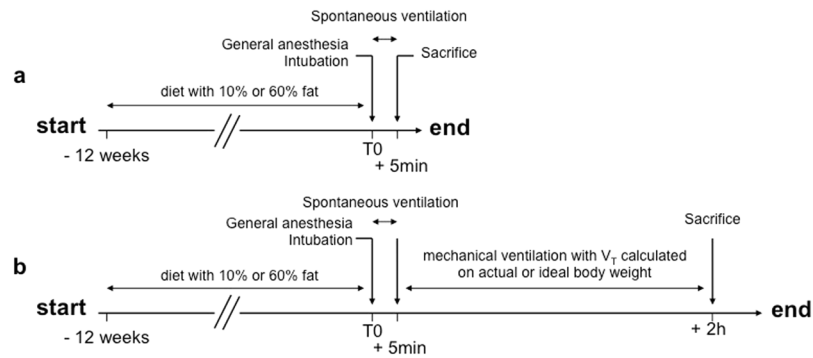


Figure 7. Design of experimental groups. **(a)** Mice were fed either a diet containing 10% fat (control mice) or 60% fat (obese mice) for 12 weeks. Non-ventilated control or obese mice (NVC and NVO) underwent general anesthesia, were intubated and were sacrificed after 5 min of spontaneous ventilation. **(b)** Mice were fed the same diet (10% or 60% fat). Ventilated control and obese mice underwent general anesthesia, were intubated and were sacrificed after 2 hours of mechanical ventilation, with a tidal volume calculated on actual weight for control mice (VC) or on either actual weight (OV_{Taw}) or ideal weight (OV_{Tiw}) for obese mice.

Specimen collection. After 2 hours of MV, mice were sacrificed by exsanguination. Two different specimen collection procedures were used: For one half of the mice, immediately following thoracotomy, the pulmonary circulation was flushed by injection of 2 mL of saline into the right ventricle, and the lungs were then inflated by tracheal injection of 4% formaldehyde at a pressure of 20 cmH₂O, fixed in 4% formaldehyde and finally paraffin-embedded. For the other half of the mice, bronchoalveolar lavage was performed with two tracheal injections of 1 mL of saline via the tracheal tube. A pulmonary circulation flush was then performed as previously described and both lungs were mechanically disrupted for flow cytometry analysis.

Histologic examination. After formalin fixation and paraffin embedding, 5 μm thick sections of the left lung were cut and stained with hematoxylin, eosin and saffron (HES). An optical microscope (BX51 Olympus) with camera (Camedia 5060, Olympus) was used for histologic examination and photographs. An inflammatory score, derived from the VILI score^{49,50}, assessing the degree of neutrophil infiltration in alveolar spaces, was determined on each lung (see SIF for details). In practice, HES-stained lung sections were examined at high power field (x40) and only alveolar spaces, located at a distance of more than one alveolus from bronchial spaces, were analyzed. Ten random fields were examined and the neutrophil count was scored from 0 to 3: 0 for <5 neutrophils per field, 1 for 5 to 10 neutrophils per field, 2 for 10 to 20 neutrophils per field, and 3 for >20 neutrophils per field. All lung sections were examined under blinded conditions, without knowledge of the mouse status (obese or not, ventilated or not).

Bronchoalveolar lavage. The total cell count was determined for a fresh fluid specimen using slides with counting grids (Hycor biomedical, Indianapolis, IN, USA). The cell pellet was diluted in saline, and differential cell counts were performed on cytospin preparations (Cytospin 3; Shandon Scientific, Cheshire, UK) stained with Diff-Quick stain (Baxter Diagnostics, McGaw Park, IL, USA). Bronchoalveolar lavage fluid was centrifuged (1500 rpm, 13 min at 4 °C), and cell-free supernatants were stored at -80 °C for subsequent assessment of protein content (using a colorimetric BCA assay, Thermo Scientific, Rockford, IL, USA).

Flow cytometric analysis. After performing BAL, a pulmonary circulation flush was performed as previously described and both lungs were removed and placed in 2 mL of cell culture medium (RPMI 16/40 supplemented with 0.1% L-glutamine and 0.1% of nonessential amino acids) and then in ice. At the end of the experiment, lungs were placed in the same medium with 5% fetal bovine serum (FBS), 0.35 mg/mL collagenase XI (Sigma-Aldrich, Saint Louis, MO, USA) and 5 mg/mL type IV bovine pancreatic DNase (Sigma-Aldrich), mechanically disrupted with a scalpel, and placed in an incubator at 37 °C with 5% CO₂ for 35 min. The action of the enzymes was stopped by adding 9 mL of RPMI medium containing 10% FBS, and digested lungs were further disrupted by gently pushing the tissue through a nylon screen (70 μm). The single-cell suspension was then washed and centrifuged at 900 rpm. To lyse contaminating red blood cells, the cell pellet was incubated for 5 min at room temperature with 5 mL of Gey's solution (NH₄Cl and KHCO₃). Cells were then washed with PBS, recentrifuged and the pellet was resuspended in 4 mL of PBS. Cell count was then performed using slides with counting grids (Hycor biomedical) after Trypan blue staining.

In cytometry tubes, 500,000 cells in 50 μL were incubated with 50 μL of Fc Block (Anti-CD16/CD32 antibody, BD Biosciences, San Jose, CA, USA) at 4 °C for 15 min and then stained with fluorophore-conjugated anti-mouse antibodies for CD11b, CD11c, Gr-1 (Ly6C/G), F4/80 and CD62L (L-selectin) or appropriate isotype-matched controls.

Samples were analyzed using a CyAn cytometer and Summit software (Beckman Coulter, Brea, USA). Macrophages were identified as high CD11c and low CD11b cells. In order to differentiate and quantify monocytes, low side-scatter, high CD11b and low CD11c events were gated. Neutrophils were differentiated from monocytes as high side-scatter, high CD11b and low CD11c cells. F4/80 was used to facilitate differentiation between monocytes and neutrophils. Cell activation was assessed based on L-selectin and CD11b adhesion molecule expression for neutrophils and L-selectin, CD11b and Gr-1 expression for monocytes. Details of the leukocyte identification procedure are represented in Supplementary Fig. S1.

Statistical analysis. Data were analyzed using Prism software version 5.0 (San Diego, CA, USA). Continuous data were expressed as median [IQ25-IQ75]. Statistical comparisons between two groups used the Mann-Whitney or the Wilcoxon test. Statistical comparisons between more than two groups used the Kruskal-Wallis test followed by a pairwise Mann-Whitney test with Benjamini-Hochberg correction for multiple testing. Two-tailed *p* values less than 0.05 were considered significant.

Ethical approval. All the experiments were performed in accordance with the official regulations of the French Ministry of Agriculture and the US National Institute of Health guidelines for the experimental use of animals, were approved by the animal institutional review board of the Paris-Est Créteil Val de Marne University, and were conducted in a specific “little animal” platform (Plateforme Exploration Fonctionnelle du Petit Animal, INSERM U955, Créteil, France).

References

- Flegal, K. M., Carroll, M. D., Kit, B. K. & Ogden, C. L. Prevalence of obesity and trends in the distribution of body mass index among US adults, 1999–2010. *JAMA* **307**, 491–497 (2012).
- Dreyfuss, D. & Saumon, G. Ventilator-induced lung injury: lessons from experimental studies. *Am J Respir Crit Care Med* **157**, 294–323 (1998).
- Ranieri, V. M. *et al.* Effect of mechanical ventilation on inflammatory mediators in patients with acute respiratory distress syndrome: a randomized controlled trial. *JAMA* **282**, 54–61 (1999).
- Slutsky, A. S. & Ranieri, V. M. Ventilator-induced lung injury. *The New England journal of medicine* **369**, 2126–2136 (2013).
- Ventilation with lower tidal volumes as compared with traditional tidal volumes for acute lung injury and the acute respiratory distress syndrome. The Acute Respiratory Distress Syndrome Network. *The New England journal of medicine* **342**, 1301–1308 (2000).
- Gajic, O. *et al.* Ventilator-associated lung injury in patients without acute lung injury at the onset of mechanical ventilation. *Crit Care Med* **32**, 1817–1824 (2004).
- Gajic, O., Frutos-Vivar, F., Esteban, A., Hubmayr, R. D. & Anzueto, A. Ventilator settings as a risk factor for acute respiratory distress syndrome in mechanically ventilated patients. *Intensive Care Med* **31**, 922–926 (2005).
- Fernandez-Perez, E. R., Keegan, M. T., Brown, D. R., Hubmayr, R. D. & Gajic, O. Intraoperative tidal volume as a risk factor for respiratory failure after pneumonectomy. *Anesthesiology* **105**, 14–18 (2006).
- Wolthuis, E. K. *et al.* Mechanical ventilation with lower tidal volumes and positive end-expiratory pressure prevents pulmonary inflammation in patients without preexisting lung injury. *Anesthesiology* **108**, 46–54 (2008).
- Lellouche, F., Dionne, S., Simard, S., Bussières, J. & Dagenais, F. High tidal volumes in mechanically ventilated patients increase organ dysfunction after cardiac surgery. *Anesthesiology* **116**, 1072–1082 (2012).
- Rhodes, A. *et al.* Surviving Sepsis Campaign: International Guidelines for Management of Sepsis and Septic Shock: 2016. *Intensive Care Med* **43**, 304–377 (2017).
- Determann, R. M. *et al.* Ventilation with lower tidal volumes as compared with conventional tidal volumes for patients without acute lung injury: a preventive randomized controlled trial. *Crit Care* **14**, R1 (2010).
- Schultz, M. J., Haitsma, J. J., Slutsky, A. S. & Gajic, O. What tidal volumes should be used in patients without acute lung injury? *Anesthesiology* **106**, 1226–1231 (2007).
- Futier, E., Constantin, J. M. & Jaber, S. Protective lung ventilation in operating room: a systematic review. *Minerva Anestesiol* **80**, 726–735 (2014).
- Fernandez-Bustamante, A., Wood, C. L., Tran, Z. V. & Moine, P. Intraoperative ventilation: incidence and risk factors for receiving large tidal volumes during general anesthesia. *BMC Anesthesiol* **11**, 22 (2011).
- Jaber, S. *et al.* A multicentre observational study of intra-operative ventilatory management during general anaesthesia: tidal volumes and relation to body weight. *Anaesthesia* **67**, 999–1008 (2012).
- Gong, M. N., Bajwa, E. K., Thompson, B. T. & Christiani, D. C. Body mass index is associated with the development of acute respiratory distress syndrome. *Thorax* **65**, 44–50 (2010).
- Delay, J. M. *et al.* The effectiveness of noninvasive positive pressure ventilation to enhance preoxygenation in morbidly obese patients: a randomized controlled study. *Anesth Analg* **107**, 1707–1713 (2008).
- Mancuso, P. Obesity and lung inflammation. *J Appl Physiol* **108**, 722–728 (2010).
- McCallister, J. W., Adkins, E. J. & O'Brien, J. M. Jr. Obesity and acute lung injury. *Clin Chest Med* **30**, 495–508, viii (2009).
- Ferrante, A. W. Jr. Obesity-induced inflammation: a metabolic dialogue in the language of inflammation. *J Intern Med* **262**, 408–414 (2007).
- Shah, D. *et al.* Obesity-induced adipokine imbalance impairs mouse pulmonary vascular endothelial function and primes the lung for injury. *Scientific reports* **5**, 11362 (2015).
- Guivarch, E. *et al.* Effects Of Adjusting Tidal Volume On Actual Or Ideal Body Weight In Ventilated Obese Mice [abstract]. *Am J Respir Crit Care Med* **185**, A5457 (2012).
- de Prost, N., Ricard, J. D., Saumon, G. & Dreyfuss, D. Ventilator-induced lung injury: historical perspectives and clinical implications. *Annals of intensive care* **1**, 28 (2011).
- Wilson, M. R. *et al.* Role of lung-margined monocytes in an *in vivo* mouse model of ventilator-induced lung injury. *Am J Respir Crit Care Med* **179**, 914–922 (2009).
- Smith, A. G., Sheridan, P. A., Harp, J. B. & Beck, M. A. Diet-induced obese mice have increased mortality and altered immune responses when infected with influenza virus. *J Nutr* **137**, 1236–1243 (2007).
- Smith, A. G., Sheridan, P. A., Tseng, R. J., Sheridan, J. F. & Beck, M. A. Selective impairment in dendritic cell function and altered antigen-specific CD8+ T-cell responses in diet-induced obese mice infected with influenza virus. *Immunology* **126**, 268–279 (2009).
- Kordonowy, L. L. *et al.* Obesity is associated with neutrophil dysfunction and attenuation of murine acute lung injury. *Am J Respir Cell Mol Biol* **47**, 120–127 (2012).
- Calixto, M. C. *et al.* Obesity enhances eosinophilic inflammation in a murine model of allergic asthma. *Br J Pharmacol* **159**, 617–625 (2010).
- Voiriot, G. *et al.* Middle age exacerbates acute respiratory distress syndrome in a double hit murine model. *Experimental gerontology* **96**, 146–154 (2017).
- Papaiahgari, S. *et al.* Genetic and pharmacologic evidence links oxidative stress to ventilator-induced lung injury in mice. *Am J Respir Crit Care Med* **176**, 1222–1235 (2007).
- Finigan, J. H. *et al.* Activated protein C protects against ventilator-induced pulmonary capillary leak. *Am J Physiol Lung Cell Mol Physiol* **296**, L1002–1011 (2009).
- Peng, X. *et al.* Inducible nitric oxide synthase contributes to ventilator-induced lung injury. *Am J Respir Crit Care Med* **172**, 470–479 (2005).
- Fernandez-Bustamante, A. *et al.* Perioperative lung protective ventilation in obese patients. *BMC Anesthesiol* **15**, 56 (2015).

35. Allen, G. B., Suratt, B. T., Rinaldi, L., Petty, J. M. & Bates, J. H. Choosing the frequency of deep inflation in mice: balancing recruitment against ventilator-induced lung injury. *Am J Physiol Lung Cell Mol Physiol* **291**, L710–717 (2006).
36. Vaporidi, K. *et al.* Effects of respiratory rate on ventilator-induced lung injury at a constant PaCO₂ in a mouse model of normal lung. *Crit Care Med* **36**, 1277–1283 (2008).
37. Voiriot, G. *et al.* Interleukin-6 displays lung anti-inflammatory properties and exerts protective hemodynamic effects in a double-hit murine acute lung injury. *Respiratory research* **18**, 64 (2017).
38. Shore, S. A. Obesity and asthma: lessons from animal models. *J Appl Physiol* **102**, 516–528 (2007).
39. Tankersley, C. G. *et al.* Leptin attenuates respiratory complications associated with the obese phenotype. *J Appl Physiol* **85**, 2261–2269 (1998).
40. Rausch, M. E., Weisberg, S., Vardhana, P. & Tortoriello, D. V. Obesity in C57BL/6J mice is characterized by adipose tissue hypoxia and cytotoxic T-cell infiltration. *Int J Obes (Lond)* **32**, 451–463 (2008).
41. Johnston, R. A. *et al.* Diet-induced obesity causes innate airway hyperresponsiveness to methacholine and enhances ozone-induced pulmonary inflammation. *J Appl Physiol* **104**, 1727–1735 (2008).
42. Lang, J. E., Williams, E. S., Mizgerd, J. P. & Shore, S. A. Effect of obesity on pulmonary inflammation induced by acute ozone exposure: role of interleukin-6. *Am J Physiol Lung Cell Mol Physiol* **294**, L1013–1020 (2008).
43. O'Brien, J. M. Jr. *et al.* Excess body weight is not independently associated with outcome in mechanically ventilated patients with acute lung injury. *Ann Intern Med* **140**, 338–345 (2004).
44. O'Brien, J. M. Jr. *et al.* Body mass index is independently associated with hospital mortality in mechanically ventilated adults with acute lung injury. *Crit Care Med* **34**, 738–744 (2006).
45. Morris, A. E. *et al.* The association between body mass index and clinical outcomes in acute lung injury. *Chest* **131**, 342–348 (2007).
46. Martino, J. L. *et al.* Extreme obesity and outcomes in critically ill patients. *Chest* **140**, 1198–1206 (2011).
47. Warden, C. H. *et al.* Identification of four chromosomal loci determining obesity in a multifactorial mouse model. *J Clin Invest* **95**, 1545–1552 (1995).
48. Mekontso Dessap, A. *et al.* Conflicting physiological and genomic cardiopulmonary effects of recruitment maneuvers in murine acute lung injury. *Am J Respir Cell Mol Biol* **46**, 541–550 (2012).
49. Belperio, J. A. *et al.* Critical role for CXCR2 and CXCR2 ligands during the pathogenesis of ventilator-induced lung injury. *J Clin Invest* **110**, 1703–1716 (2002).
50. Imanaka, H. *et al.* Ventilator-induced lung injury is associated with neutrophil infiltration, macrophage activation, and TGF-beta 1 mRNA upregulation in rat lungs. *Anesth Analg* **92**, 428–436 (2001).

Acknowledgements

We are very grateful to the following members of U955 INSERM unit for their invaluable help, and priceless scientific and technical assistance: Dr. Sabine Le Gouvello, Dr. Laurent Boyer, Dr. Maeva Zysman, Marie-Laure Franco-Montoya (Equipe 4, INSERM U955, Créteil), Rachid Souktani (Plateforme Exploration Fonctionnelle du Petit Animal, INSERM U955, Créteil), Aurélie Guguin and Adeline Henri (Plateforme Cytométrie en Flux, INSERM U955, Créteil), Xavier Decrouy (Plateforme Imagerie, INSERM U955 Créteil).

Author Contributions

E.G., G.V., A.R., M.D. and J.B. designed the study. E.G., A.R., S.K. and J.T.V.N. acquired the data. E.G., G.V., A.R., J.T.V.N., P.M., B.M., A.M.D., M.D. and J.B. analyzed and interpreted the data. All authors drafted the article, and approved the final version of the manuscript.

Additional Information

Supplementary information accompanies this paper at <https://doi.org/10.1038/s41598-018-24615-5>.

Competing Interests: The authors declare no competing interests.

Publisher's note: Springer Nature remains neutral with regard to jurisdictional claims in published maps and institutional affiliations.



Open Access This article is licensed under a Creative Commons Attribution 4.0 International License, which permits use, sharing, adaptation, distribution and reproduction in any medium or format, as long as you give appropriate credit to the original author(s) and the source, provide a link to the Creative Commons license, and indicate if changes were made. The images or other third party material in this article are included in the article's Creative Commons license, unless indicated otherwise in a credit line to the material. If material is not included in the article's Creative Commons license and your intended use is not permitted by statutory regulation or exceeds the permitted use, you will need to obtain permission directly from the copyright holder. To view a copy of this license, visit <http://creativecommons.org/licenses/by/4.0/>.

© The Author(s) 2018