



HAL
open science

High frequency of central nervous system involvement in transformed Waldenström macroglobulinemia.

Eric Durot, Lukshe Kanagaratnam, Saurabh Zanwar, Elise Toussaint, Efstathios Kastritis, Shirley d'Sa, Miguel Alcoceba, Cécile Tomowiak, Bénédicte Hivert, Caroline Protin, et al.

► To cite this version:

Eric Durot, Lukshe Kanagaratnam, Saurabh Zanwar, Elise Toussaint, Efstathios Kastritis, et al.. High frequency of central nervous system involvement in transformed Waldenström macroglobulinemia.. Blood Advances, 2022, Blood Advances, 10.1182/bloodadvances.2022007331 . hal-04387889

HAL Id: hal-04387889

<https://hal.univ-lille.fr/hal-04387889>

Submitted on 11 Jan 2024

HAL is a multi-disciplinary open access archive for the deposit and dissemination of scientific research documents, whether they are published or not. The documents may come from teaching and research institutions in France or abroad, or from public or private research centers.

L'archive ouverte pluridisciplinaire **HAL**, est destinée au dépôt et à la diffusion de documents scientifiques de niveau recherche, publiés ou non, émanant des établissements d'enseignement et de recherche français ou étrangers, des laboratoires publics ou privés.



Distributed under a Creative Commons Attribution - NonCommercial - NoDerivatives 4.0 International License

TO THE EDITOR:

High frequency of central nervous system involvement in transformed Waldenström macroglobulinemia

Eric Durot,^{1,2} Lukshe Kanagaratnam,^{3,4} Saurabh Zanwar,⁵ Elise Toussaint,⁶ Efstathios Kastritis,⁷ Shirley D'Sa,⁸ Miguel Alcoceba,⁹ Cécile Tomowiak,¹⁰ Bénédicte Hivert,¹¹ Caroline Protin,¹² Jithma P. Abeykoon,⁵ Josephine M. I. Vos,¹³ Anne-Sophie Michallet,¹⁴ Cyrielle Rodier,^{1,2} Jehan Dupuis,¹⁵ Stéphane Leprêtre,¹⁶ Fatiha Merabet,¹⁷ Xavier Roussel,¹⁸ Jean-Marc Zini,¹⁹ Caroline Regny,²⁰ Aisha Patel,⁸ Pierre Morel,²¹ Damien Roos-Weil,²² Steven P. Treon,²³ Meletios A. Dimopoulos,⁷ Ramon Garcia-Sanz,⁹ Prashant Kapoor,⁵ Jorge J. Castillo,²³ and Alain Jacques Delmer^{1,2}

¹Department of Hematology, University Hospital of Reims, Reims, France; ²UFR Médecine, Reims, France; ³Department of Research and Public Health, University Hospital of Reims, Reims, France; ⁴UR 3797, Vieillesse, Fragilité (VieFra), Faculty of Medicine, University of Reims Champagne-Ardenne, Reims, France; ⁵Division of Hematology, Department of Internal Medicine, Mayo Clinic, Rochester, MN; ⁶Department of Hematology, University Hospital of Strasbourg, Strasbourg, France; ⁷Department of Clinical Therapeutics, National and Kapodistrian University of Athens, Athens, Greece; ⁸University College London Hospitals (UCLH) NHS Foundation Trust, London, United Kingdom; ⁹Department of Hematology, University Hospital of Salamanca (HUS/IBSAL), CIBERONC and Cancer Research Institute of Salamanca-IBMCC (USAL-CSIC), Salamanca, Spain; ¹⁰Department of Hematology and CIC U1402, University Hospital of Poitiers, Poitiers, France; ¹¹Department of Hematology, Hospital of Lens, Lens, France; ¹²Department of Hematology, IUCT Oncopole, Toulouse, France; ¹³Amsterdam University Medical Center (UMC) and LYMMCARE, Amsterdam, The Netherlands; ¹⁴Department of Hematology, Léon Bérard Center, Lyon, France; ¹⁵Lymphoid Malignancies Unit, Henri Mondor Hospital, Créteil, France; ¹⁶Inserm U1245 and Department of Hematology, Henri Becquerel Center and Normandie University UNIROUEN, Rouen, France; ¹⁷Department of Hematology, André Mignot Hospital, Versailles, France; ¹⁸Department of Hematology, University Hospital of Besançon, Besançon, France; ¹⁹Department of Hematology, Saint-Louis Hospital, Paris, France; ²⁰Department of Hematology, University Hospital of Grenoble, Grenoble, France; ²¹Department of Hematology, University Hospital of Amiens, Amiens, France; ²²Department of Hematology, Sorbonne University, Pitié-Salpêtrière Hospital, APHP Paris, France; and ²³Bing Center for Waldenström Macroglobulinemia, Dana-Farber Cancer Institute, Harvard Medical School, Boston, MA

Histological transformation (HT) to diffuse large B-cell lymphoma (DLBCL) is a rare event in Waldenström macroglobulinemia (WM) and is associated with a poor prognosis.¹⁻⁴ It confers an inferior outcome compared with WM patients without HT.^{2,3} Most transformed WM patients present with elevated serum lactate dehydrogenase (LDH) levels and extranodal disease.¹ Among extranodal sites, the central nervous system (CNS) is one of the most frequently involved sites identified at diagnosis of transformed WM (ranging from 13% to 18%).^{1,3} However, the prognostic value of CNS involvement is unknown, and the rate of CNS involvement at relapse has not been previously reported in this setting.

In de novo DLBCL, CNS relapse is a rare complication characterized by poor outcomes.⁵ Fewer than 5% of patients with DLBCL experience a CNS relapse in the rituximab era. Several risk factors for CNS involvement have been identified, such as the number of extranodal sites,⁶ specific location(s) of extranodal sites (testis, kidney, adrenal glands, breast), and activated B-cell (ABC) subtype.⁷ The CNS International Prognostic Index (CNS-IPI) combines the IPI factors in addition to the involvement of kidneys and/or adrenal glands and allows identifying a higher-risk group of patients (12%) with an incidence of CNS relapse of 10% to 12%.⁸ More recently, 2 specific genomic subtypes (the hc-MCD subtype with *MYD88*^{L265P} and *CD79B* mutations and a subgroup with high-grade tumors characterized by double-hit biology or *TP53* mutations) were found to be associated with CNS recurrence.⁹

Given that high IPI, ABC subtype, and *MYD88*^{L265P} mutation are common features in transformed WM,¹⁻⁴ this observation prompted us to investigate CNS involvement in a large cohort of transformed WM, with the objectives of describing the rate of baseline CNS involvement, the risk of CNS involvement at relapse, and the risk factors associated with CNS relapse.

This international multicenter retrospective study included patients with a diagnosis of WM and a concurrent or sequential histological diagnosis of DLBCL. CNS disease was diagnosed by detection of DLBCL

Submitted 15 February 2022; accepted 26 February 2022; prepublished online on *Blood Advances* First Edition 15 March 2022; final version published online 21 June 2022. DOI 10.1182/bloodadvances.2022007331.

Presented in abstract form at the 63rd annual meeting of the American Society of Hematology, Atlanta, GA, 12 December 2021.

Requests for data sharing may be submitted to Eric Durot (edurot@chu-reims.fr).

The full-text version of this article contains a data supplement.

© 2022 by The American Society of Hematology. Licensed under Creative Commons Attribution-NonCommercial-NoDerivatives 4.0 International (CC BY-NC-ND 4.0), permitting only noncommercial, nonderivative use with attribution. All other rights reserved.

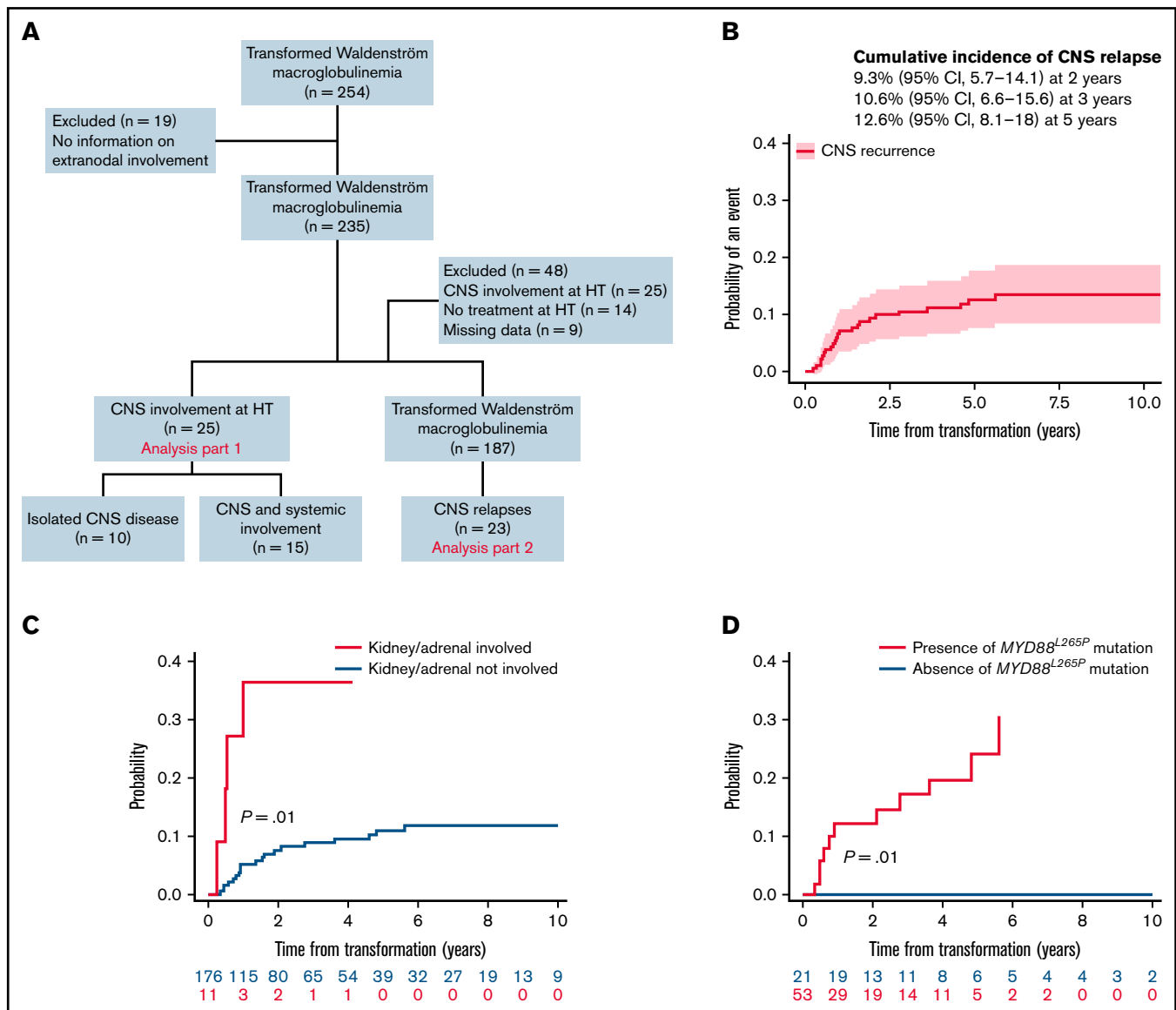


Figure 1. Study flowchart and estimated risk of CNS relapse in transformed WM. (A) Flowchart of inclusion. Patients with transformed WM (254) were analyzed, 235 for CNS involvement at HT and 187 for CNS relapse. (B) Cumulative incidence of CNS relapses. (C) Cumulative incidence of CNS relapse stratified by kidney/adrenal involvement. (D) Cumulative incidence of CNS relapse stratified by the presence of *MYD88*^{L265P} mutation.

cells in the cerebrospinal fluid and/or by brain biopsy. Patients with CNS involvement by lymphoplasmacytic cells (Bing-Neel syndrome) were excluded. Of 254 identified patients with HT diagnosed between 1988 and 2020, 19 were excluded due to a lack of data on extranodal involvement (Figure 1A). The first part of the analysis ($n = 235$ patients) focused on the baseline CNS involvement (ie, CNS involvement at HT). Clinicobiological characteristics were compared between groups using χ -square or Fisher's exact tests or Mann-Whitney U tests as appropriate. We analyzed CNS involvement at relapse in the second part of the study. Forty-eight additional patients were excluded due to baseline CNS involvement ($n = 25$), absence of treatment at HT ($n = 14$), and lack of details on follow-up ($n = 9$), leading to a final population of 187 patients. Cumulative incidence of CNS relapse was analyzed using competing-risk models that accounted for other events like systemic relapse or death from any cause, reporting subhazard ratios (SHRs). The presence of

MYD88^{L265P} mutation was tested by allele-specific polymerase chain reaction on bone marrow samples at diagnosis of WM. This study was approved by the institutional review board of each center and conducted in accordance with the Declaration of Helsinki.

At the time of HT, CNS was involved in 25 patients (11%), including 10 (4%) with parenchymal disease, 10 (4%) with leptomeningeal, 4 (2%) with both, and 1 with unspecified CNS involvement. Characteristics associated with CNS involvement at HT were performance status 2 to 4 ($P = .03$) and ≥ 2 extranodal sites ($P = .02$) (supplemental Table 1). Median survival after HT was 1 year (95% confidence interval [CI], 0.7-2.5) for patients with CNS involvement at HT and 1.8 year (95% CI, 1.2-2.6) for those without CNS disease ($P = .74$) (supplemental Figure 1A). Patients with isolated CNS involvement ($n = 10$) were treated with high-dose (HD) methotrexate (MTX) (HD-MTX) and HD-cytarabine either combined ($n = 5$) or alone (HD-

Table 1. Risk factors for CNS relapse in transformed WM

Variable	Cumulative incidence at 3 y				Univariate model		
	With		Without		SHR	95% CI	P
	%	95% CI	%	95% CI			
Age > 60	13	8-19	4	8-13	1.70	0.59-4.87	.32
Female sex	11	5-20	10	6-17	0.89	0.38-2.09	.80
Treatment prior to HT	10	6-16	11	4-22	0.75	0.31-1.80	.51
ECOG PS 2-4	9	3-18	11	6-18	0.82	0.33-2.00	.66
B symptoms	10	5-18	11	6-19	0.73	0.30-1.76	.48
LDH > ULN	10	5-16	9	3-19	0.78	0.32-1.89	.58
β2 microglobulin >3 mg/L	17	8-27	6	3-23	1.17	0.34-4.00	.81
Albumin <3.5 g/dL	8	3-15	12	5-21	0.46	0.17-1.23	.12
Stage III-IV	12	7-18	6	10-17	1.74	0.53-5.69	.36
≥2 extranodal sites	21	10-35	8	6-24	2.28	0.98-5.30	.06
Extranodal involvement							
Kidney/adrenal	36	10-65	9	5-14	4.36	1.39-13.72	.01
Testis	0	NA	11	7-16	0.90	0.14-5.94	.91
Bone marrow	17	9-28	7	4-13	1.99	0.88-4.49	.10
Liver	17	2-43	10	6-15	1.48	0.33-6.66	.61
Skin	13	2-34	10	6-16	1.02	0.24-4.30	.98
<i>MYD88</i> ^{L265P} mutation	17	8-30	0	NA			.01
CNS-IPI							
Low risk (0-1)	0	NA			ref.		.47
Intermediate risk (2-3)	9	4-16			2.03	0.28-14.6	
High risk (4-6)	14	6-24			2.99	0.41-21.92	

CNS-IPI, central nervous system-International Prognostic Index; ECOG PS, Eastern Cooperative Oncology Group performance status; HT, histological transformation; SHR, sub-hazard ratio; ULN, upper limit of normal.

MTX, n = 2; HD-cytarabine, n = 3). Eleven out of 15 patients with concurrent systemic involvement received MTX (HD-MTX in 7, intrathecal in 4) combined with rituximab, cyclophosphamide, doxorubicin, vincristine, and prednisone (R-CHOP) (n = 8) or temozolomide (n = 3). Three patients were treated with rituximab, dexamethasone, ara-C, and carboplatin (R-DHAC) and one with CHOP + radiotherapy. Twenty patients relapsed or progressed, including 7 CNS recurrence. We observed no difference in survival based on isolated CNS involvement (median, 1.1 years; 95% CI, 0.1-not reached) compared with CNS and systemic involvement (median, 1 year; 95% CI, 0.3-7.6) (P = .94) (supplemental Figure 1B).

For further analyses, the 25 patients with CNS involvement at the time of HT were excluded (Figure 1A). With a median follow-up of 7 years (95% CI, 5.8-8.1), 23 of 187 patients (12%) presented with a CNS relapse. The estimated 2- and 3-year rates of CNS relapse were 9% (95% CI, 6-14) and 11% (95% CI, 7-16), respectively (Figure 1B). The median time to relapse in the CNS was 11 months (interquartile range, 7-25). Seventy percent were isolated CNS relapses. The location was leptomeningeal in 43% of cases, parenchymal in 35%, both in 17%, and unspecified in 4%. Characteristics at HT of 23 patients with CNS relapse were 87% stage III or IV, 91% extranodal involvement (including 41% with >1 extranodal site), 60% elevated LDH, and 72% IPI 3 to 5. According to CNS-IPI risk groups (data available for 20 patients), 9 patients (45%) belonged to the high-risk group, 10 (50%) to the

intermediate-risk group, and 1 (5%) to the low-risk group. All patients with CNS relapse and available data for *MYD88* mutation status (n = 11) carried an *MYD88*^{L265P} mutation.

Prior to CNS relapse, 87% (n = 20) of patients had received R-CHOP regimen as first-line treatment for HT, and 43% (n = 10) had received CNS prophylaxis (33% intrathecal chemotherapy, 5% HD-MTX, and 5% both). Eighteen patients (78%) achieved a complete response before progression. After CNS relapse, 96% of patients received salvage treatment: a combination of HD-MTX and HD-cytarabine (48%), HD-MTX alone (30%), or HD-cytarabine alone (9%). Four patients underwent consolidative autologous stem cell transplantation (SCT). The median survival after CNS relapse was 5.6 months (95% CI, 2.8-27.2). Among the 6 survivors, 2 underwent autologous SCT, and 2 are receiving ongoing ibrutinib therapy.

Factors associated with a 3-year cumulative incidence of CNS relapse in univariate analysis (Table 1) were involvement of kidney/adrenal glands (SHR, 4.4; P = .01) (Figure 1C) and presence of *MYD88*^{L265P} mutation (P = .01) (Figure 1D). Of note, among 74 patients with data available for *MYD88* mutation status, 11 CNS relapses occurred in patients with *MYD88*^{L265P} mutation (n = 53; 21%), whereas no relapses were observed in the *MYD88*^{WT} cohort (n = 21). A trend toward a higher risk of CNS relapse for ≥2 extranodal sites (SHR, 2.3; 95% CI 0.98-5.3; P = .06) was observed (supplemental Figure 2A). Cumulative incidence according to CNS-IPI risk groups (0% in the low-risk, 9% in the intermediate-risk, and

14% in the high-risk group) was not statistically significant ($P = .47$) (supplemental Figure 2B).

Our findings demonstrate that CNS involvement frequently occurs in transformed WM, affecting about a quarter of patients combining involvement at HT and relapses. In this population, the rate of CNS relapse seems similar to that observed in DLBCL patients belonging to the CNS-IPI high-risk group. Outcomes associated with CNS involvement in our study are poor, in line with the known prognosis of transformed WM,¹⁻⁴ but markedly different from that reported with Bing-Neel syndrome (survival rate of 71% to 86% at 5 years),¹⁰⁻¹² emphasizing the need to properly document CNS involvement in WM through accurate cytological or histological analysis. A particularly high incidence of CNS relapse is observed in patients with kidney/adrenal involvement and/or *MYD88*^{L265P} mutation. We previously reported poorer survival after HT in patients with *MYD88*^{L265P} mutation.⁴ This can possibly be explained at least partly by this high rate of CNS relapse in these patients. Limitations of this study are inherent to its retrospective design, but a prospective assessment of an infrequent complication (HT in WM) is challenging. There is room for improvement in the therapy of transformed WM, but the therapeutic approach will need to take into account the risk of CNS involvement, including more accurate identification of CNS occult disease and the use of prophylactic and/or therapeutic agents crossing the blood-brain barrier.

Acknowledgments: This work was supported by Cancer Research UK [C355/A26819], FC AECC, and AIRC under the “Accelerator Award Program” [EDITOR] to M.A. and R.G.-S.

Contribution: E.D. and A.J.D. designed the study and wrote the manuscript; E.D., L.K., and A.J.D. analyzed the data; and all authors were involved in data collection and interpretation and approved the final version of the manuscript.

Conflict-of-interest disclosure: P.M. received research funds and consulting fees from Beigene and Janssen. P.K. is a principal investigator of studies for which Mayo Clinic has received research funding from AbbVie, Sanofi, Amgen, GSK, Ichnos, Takeda, Regeneron, and Karyopharm; has received honoraria from X4 Pharmaceuticals, Beigene, Pharmacyclics, Imidex, Clinical Care Options, GSK, Oncopeptides, Cellectar, and Karyopharm. J.J.C. received research funds and consulting fees from Abbvie, AstraZeneca, Beigene, Janssen, Pharmacyclics, Polyneuron, Roche, and TG Therapeutics. The remaining authors declare no competing financial interests.

ORCID profiles: E.D., 0000-0003-3463-0089; L.K., 0000-0003-3685-8407; S.Z., 0000-0001-5074-8453; E.K., 0000-0001-8191-5832; M.A., 0000-0002-3819-4846; C.T., 0000-0003-4093-6463; J.P.A., 0000-0003-3939-6252; X.R., 0000-0001-5124-8530; P.M., 0000-0002-0782-3144; D.R.-W., 0000-0002-7767-755X; S.P.T., 0000-0001-6393-6154; R.G.-S., 0000-0003-4120-2787; P.K., 0000-0002-4342-364X; J.J.C., 0000-0001-9490-7532; A.J.D., 0000-0002-1430-2574.

Correspondence: Eric Durot, Department of Hematology, Centre Hospitalier Universitaire de Reims, Hôpital Robert Debré, Ave du Général Koenig, 51092 Reims Cedex, France; e-mail: edurot@chu-reims.fr.

References

1. Durot E, Tomowiak C, Michallet AS, et al. Transformed Waldenström macroglobulinaemia: clinical presentation and outcome. A multi-institutional retrospective study of 77 cases from the French Innovative Leukemia Organization (FILO). *Br J Haematol*. 2017;179(3):439-448.
2. Castillo JJ, Gustine J, Meid K, Dubeau T, Hunter ZR, Treon SP. Histological transformation to diffuse large B-cell lymphoma in patients with Waldenström macroglobulinemia. *Am J Hematol*. 2016;91(10):1032-1035.
3. Zanwar S, Abeykoon JP, Durot E, et al. Impact of *MYD88*^{L265P} mutation status on histological transformation of Waldenström macroglobulinemia. *Am J Hematol*. 2020;95(3):274-281.
4. Durot E, Kanagaratnam L, Zanwar S, et al. A prognostic index predicting survival in transformed Waldenström macroglobulinemia. *Haematologica*. 2021;106(11):2940-2946.
5. Boehme V, Zeynalova S, Kloess M, et al. Incidence and risk factors of central nervous system recurrence in aggressive lymphoma – a survey of 1693 patients treated in protocols of the German High-Grade Non-Hodgkin's Lymphoma study group (DSHNHL). *Ann Oncol*. 2007; 18(1):149-157.
6. El-Galaly TC, Villa D, Michaelsen TY, et al. The number of extranodal sites assessed by PET/CT scan is a powerful predictor of CNS relapse for patients with diffuse large B-cell lymphoma: an international multicenter study of 1532 patients treated with chemoimmunotherapy. *Eur J Cancer*. 2017;75:195-203.
7. Klanova M, Sehn LH, Bence-Bruckler I, et al. Integration of cell of origin into the clinical CNS International Prognostic Index improves CNS relapse prediction in DLBCL. *Blood*. 2019;133(9):919-926.
8. Schmitz N, Zeynalova S, Nickelsen M, et al. CNS International Prognostic Index: a risk model for CNS relapse in patients with diffuse large B-cell lymphoma treated with R-CHOP. *J Clin Oncol*. 2016;34(26):3150-3156.
9. Ollila TA, Kurt H, Waroich J, et al. Genomic subtypes may predict the risk of central nervous system recurrence in diffuse large B-cell lymphoma. *Blood*. 2021;137(8):1120-1124.
10. Simon L, Fitsiori A, Lemal R, et al. Bing-Neel syndrome, a rare complication of Waldenström macroglobulinemia: analysis of 44 cases and review of the literature. A study on behalf of the French Innovative Leukemia Organization (FILO). *Haematologica*. 2015; 100(12):1587-1594.
11. Castillo JJ, D'Sa S, Lunn MP, et al. Central nervous system involvement by Waldenström macroglobulinaemia (Bing-Neel syndrome): a multi-institutional retrospective study. *Br J Haematol*. 2016;172(5):709-715.
12. Castillo JJ, Itchaki G, Paludo J, et al. Ibrutinib for the treatment of Bing-Neel syndrome: a multicenter study. *Blood*. 2019;133(4): 299-305.