



HAL
open science

Measurable residual disease at myeloablative allogeneic transplantation in adults with acute lymphoblastic leukemia: a retrospective registry study on 2780 patients from the acute leukemia working party of the ebmt

Jiri Pavlu, Myriam Labopin, Riitta Niittyvuopio, Gerard Socie, Ibrahim Yakoub-Agha, Depei Wu, Peter Remenyi, Jakob Passweg, Dietrich Beelen, Mahmoud Aljurf, et al.

► To cite this version:

Jiri Pavlu, Myriam Labopin, Riitta Niittyvuopio, Gerard Socie, Ibrahim Yakoub-Agha, et al.. Measurable residual disease at myeloablative allogeneic transplantation in adults with acute lymphoblastic leukemia: a retrospective registry study on 2780 patients from the acute leukemia working party of the ebmt. *Journal of Hematology & Oncology*, 2019, *Journal of Hematology & Oncology*, 12, pp.108. 10.1186/s13045-019-0790-x . hal-04429141

HAL Id: hal-04429141

<https://hal.univ-lille.fr/hal-04429141v1>

Submitted on 14 Feb 2024

HAL is a multi-disciplinary open access archive for the deposit and dissemination of scientific research documents, whether they are published or not. The documents may come from teaching and research institutions in France or abroad, or from public or private research centers.

L'archive ouverte pluridisciplinaire **HAL**, est destinée au dépôt et à la diffusion de documents scientifiques de niveau recherche, publiés ou non, émanant des établissements d'enseignement et de recherche français ou étrangers, des laboratoires publics ou privés.




Distributed under a Creative Commons Attribution 4.0 International License

RESEARCH

Open Access



Measurable residual disease at myeloablative allogeneic transplantation in adults with acute lymphoblastic leukemia: a retrospective registry study on 2780 patients from the acute leukemia working party of the EBMT

Jiří Pavlu^{1*} , Myriam Labopin², Riitta Niittyvuopio³, Gerard Socié⁴, Ibrahim Yakoub-Agha⁵, Depei Wu⁶, Peter Remenyi⁷, Jakob Passweg⁸, Dietrich W. Beelen⁹, Mahmoud Aljurf¹⁰, Nicolaus Kröger¹¹, Hélène Labussière-Wallet¹², Zinaida Perić¹³, Sebastian Giebel¹⁴, Arnon Nagler¹⁵ and Mohamad Mohty²

Abstract

Background: Assessment of measurable residual disease (MRD) is rapidly transforming the therapeutic and prognostic landscape of a wide range of hematological malignancies. Its prognostic value in acute lymphoblastic leukemia (ALL) has been established and MRD measured at the end of induction is increasingly used to guide further therapy. Although MRD detectable immediately before allogeneic hematopoietic cell transplantation (HCT) is known to be associated with poor outcomes, it is unclear if or to what extent this differs with different types of conditioning.

Methods: In this retrospective registry study, we explored whether measurable residual disease (MRD) before allogeneic hematopoietic cell transplantation (HCT) for acute lymphoblastic leukemia is associated with different outcomes in recipients of myeloablative total body irradiation (TBI)-based versus chemotherapy-based conditioning. We analyzed outcomes of 2780 patients (median age 38 years, range 18–72) who underwent first HCT in complete remission between 2000 and 2017 using sibling or unrelated donors.

Results: In 1816 of patients, no disease was detectable, and in 964 patients, MRD was positive. Conditioning was TBI-based in 2122 (76%) transplants. In the whole cohort MRD positivity was a significant independent factor for lower overall survival (OS) and leukemia-free survival (LFS), and for higher relapse incidence (RI), with respective hazard ratios (HR, 95% confidence intervals) of 1.19 (1.02–1.39), 1.26 (1.1–1.44), and 1.51 (1.26–1.8). TBI was associated with a higher OS, LFS, and lower RI with HR of 0.75 (0.62–0.90), 0.70 (0.60–0.82), and 0.60 (0.49–0.74), respectively. No significant interaction was found between MRD status and conditioning. When investigating the impact of MRD separately in the TBI and chemotherapy-based conditioning cohorts by multivariate analysis, we found MRD positivity to be associated with lower OS and LFS and higher RI in the TBI group, and with higher RI in the chemotherapy group. TBI-based conditioning was associated with improved outcomes in both MRD-negative and MRD-positive patients.

(Continued on next page)

* Correspondence: jiri@pavlu.co.uk

¹Centre for Haematology, Imperial College London at Hammersmith Hospital, Du Cane Road, London W12 0HS, UK

Full list of author information is available at the end of the article



(Continued from previous page)

Conclusions: In this large study, we confirmed that patients who are MRD-negative prior to HCT achieve superior outcomes. This is particularly apparent if TBI conditioning is used. All patients with ALL irrespective of MRD status benefit from TBI-based conditioning in the myeloablative setting.

Keywords: Measurable residual disease, Allogeneic hematopoietic cell transplantation, Acute lymphoblastic leukemia, Allogeneic, Myeloablative conditioning, Total body irradiation

Background

Assessment of measurable residual disease (MRD) is rapidly transforming the therapeutic and prognostic landscape of a wide range of hematological malignancies. Its prognostic value in acute lymphoblastic leukemia (ALL) has been established and MRD measured post-induction or consolidation is increasingly used to guide further therapy [1].

The prognostic value of MRD measured prior to allogeneic hematopoietic cell transplantation (HCT) on its outcomes was first observed in small retrospective [2, 3] and prospective [4] studies of children and adolescents and later also in adults [5–7], and confirmed in a recent meta-analysis [8]. However, it remains unclear if or to what extent the choice of conditioning regimen impacts on this. We have recently studied the interaction of myeloablative versus reduced-intensity conditioning and MRD in acute myeloid leukemia [9]. As ALL patients rarely receive reduced-intensity conditioning, we explored if MRD detectable before allogeneic HCT for ALL is associated with different outcomes in recipients of myeloablative total body irradiation (TBI)-based versus chemotherapy-based conditioning.

Methods

Study design and data collection

This was a multicenter, retrospective registry analysis, approved by the Acute Leukemia Working Party of the European Society for Blood and Marrow Transplantation (EBMT). The EBMT is a voluntary group that represents more than 600 transplant centers, predominantly European. EBMT centers pay annual subscriptions to maintain the EBMT Registry.

EBMT Med A/B standardized data collection forms [10] are submitted to the registry by transplant center personnel following written informed consent from patients in accordance with center ethical research guidelines. Accuracy of data is assured by the individual transplant centers and by quality control measures such as regular internal and external audits. Presence of Philadelphia chromosome status was collected. The results of disease assessments at HCT were also submitted and form the basis of this report.

Eligibility criteria were age 18 years or older, a diagnosis of de novo ALL, disease status at transplant of morphological first complete remission supplemented by a report of MRD status, recipients of first myeloablative

HCT during the study period 2000 to 2017, a stem cell source that was either unmanipulated peripheral blood stem cells or bone marrow and a donor that was a sibling or unrelated 9/10 or 10/10 matched. Table 1 provides numbers of patients fulfilling the inclusion criteria and availability of required information in the EBMT database. MRD methodology and allocation to MRD-negative or MRD-positive groups were determined by individual participating centers and utilized molecular and/or immunophenotyping criteria. An additional audit of methods used in the EBMT centers contributing to the study showed that 34 of 56 centers (61%) used both PCR-based and immunophenotyping-based techniques. PCR-based techniques only were used in 11 centers and immunophenotyping only also in 11 centers (19.6%). All centers but one regarded an MRD level of 10^{-4} or lower as negative (for one center this was less than 10^{-3}). Intensity of conditioning was allocated in accordance with published criteria [11].

Statistical methods

Measured outcomes were leukemia-free survival (LFS), relapse incidence (RI), non-relapse mortality (NRM), overall survival (OS), acute graft-vs-host disease (aGVHD), chronic graft-vs-host-disease (cGVHD), and GVHD-free and relapse-free survival (GRFS). LFS was defined as survival with no evidence of relapse or progression. Relapse was defined as a reappearance of blasts in the blood or bone marrow (> 5%) or in any extramedullary site. NRM was defined as death without evidence of relapse or progression. OS was defined as the time from HCT to death, regardless of the cause. GRFS was defined as survival free of events including grade 3–4 aGVHD, extensive cGVHD, relapse, or death [12].

Probabilities of OS, LFS, and GRFS were calculated using the Kaplan-Meier method. Cumulative incidence was used to estimate the endpoints of NRM, RI, aGVHD, and cGVHD to accommodate competing risks. To study aGVHD and cGVHD, we considered relapse and death to be competing risks. Univariate analyses were done using Gray's test for cumulative incidence functions and the log-rank test for OS, GRFS, and LFS. A Cox proportional hazards model was used for multivariate regression. All variables differing significantly between the two groups or factors known to influence outcomes were included in the

Table 1 Numbers of patients fulfilling the inclusion criteria with required information

Inclusion criteria	N
Adults with ALL in CR1 or CR2 allografted from MSD or UD 10/10 or UD 9/10 from January 2000 to December 2017	10,418
Myeloablative conditioning	8400
Available information	
Immunophenotype B or T and Philadelphia status	5540
MRD status before transplantation reported	2780

Cox model. In order to test for a center effect, we introduced a random effect or frailty for each center into the model [13, 14]. Results were expressed as the hazard ratio (HR) with the 95% confidence interval (95% CI). The type I error rate was fixed at 0.05 for the determination of factors associated with time-to-event outcomes.

After analysis of the whole group, two separate planned sub-analyses of TBI-based conditioning and chemotherapy only conditioning were made. Statistical analyses were performed with SPSS 24.0 (SPSS Inc., Chicago, IL) and R 3.4.1 (R Core Team 2017) [15].

Results

Demographics and transplant details

A total of 2780 patients from 301 transplant centers were eligible. Median age at transplantation was 38 years (range 18–72). In 1816 (65%) of patients, no disease was detectable, and in 964 (35%) patients, MRD was positive. Conditioning was TBI-based in 2122 (76%) transplants and chemotherapy-based in 658 (24%) transplants. Details of patient and transplant characteristics by MRD status are summarized in Table 2. More patients with Philadelphia chromosome-positive B-ALL were MRD-positive at transplantation (66 versus 49%, $P < .001$). Patients who were MRD-negative at the time of transplantation were less likely to receive donor lymphocytes after the procedure (7% versus 12%, $P < .001$). With a medium follow-up of 42 months the probability of OS, LFS, GRSF, and RI at 2 years for the whole cohort was 65% (95% CI 63–70), 55% (95% CI 53–57), 42% (95% CI 39–44), and 27% (95% CI 25–29), respectively.

Univariate analysis

Compared to MDR-negative status MRD-positive status at the time of transplantation was associated with significantly worse probability of OS (61% versus 67%), LFS (50% versus 58%), GRSF (35% versus 45%), and with higher RI (32% versus 24%) at 2 years post-transplantation. The full results of univariate analysis are summarized in Additional file 2.

Multivariate analysis

The results of multivariate analysis by Cox regression showed MRD positivity was a significant independent factor for lower survival and LFS, and for higher RI, with respective HR of 1.19 (95% CI 1.02–1.39), 1.26 (95% CI

1.1–1.44), and 1.51 (95% CI 1.26–1.8). Of the potentially modifiable factors, use of TBI-based conditioning was associated with a higher OS, LFS, and lower RI with HR of 0.75 (95% CI 0.62–0.90), 0.70 (95% CI 0.60–0.82), and 0.60 (95% CI 0.49–0.74), respectively. Use of in vivo T cell depletion was associated with decreased NRM, improved GRSF, lower incidence acute grade II–IV, grade III–IV, chronic, and extensive chronic GVHD, with HR of 0.68 (95% CI 0.52–0.88), 0.75 (95% CI 0.64–0.88), 0.72 (95% CI 0.59–0.89), 0.51 (95% CI 0.35–0.75), 0.58 (95% CI 0.47–0.71), and 0.48 (95% CI 0.36–0.64), respectively. The prognostic impact of MRD status did not differ significantly according to the conditioning. Results of multivariate analysis of the whole cohort are summarized in Table 3.

When investigating the impact of MRD separately in the TBI and chemotherapy-based conditioning cohorts by multivariate analysis, we found MRD positivity to be associated with lower OS and LFS and higher RI in the TBI group, and with higher RI in the chemotherapy group (results are summarized in Additional file 3). TBI-based conditioning was associated with improved outcomes in both MRD-negative and MRD-positive patients (Fig. 1).

Discussion

In this large study, we confirmed that adult patients with ALL who are MRD-negative prior to allogeneic HCT achieve superior outcomes, namely, lower RI, higher LFS, and OS. We were interested in exploring potential differing outcomes between recipients of TBI-based conditioning and conditioning based on chemotherapy only. While TBI-based conditioning is associated with significant short as well as long-term toxicity [16], it remains part of most conditioning protocols for ALL because it is believed to have a better anti-leukemic potential in lymphoid malignancies. In animal experiments, administration of high doses of busulfan had little impact on lymphoid organs [17] or on antibody responses [18]. In children, a small randomized trial [19] showed better event-free survival with TBI-based regimens, and a recent large international randomized trial closed, after an interim analysis showed a survival benefit in patients who received TBI-based conditioning over chemotherapy-based conditioning [20]. There are no such randomized prospective trials in adults, but data in many retrospective studies, including recently

Table 2 Demographics and transplant details

Characteristic	MRD negative	MRD positive	P
N	1816	964	
Median follow-up, (months, IQR)	39.70 (12.89–84.20)	44.56 (16.07–82.07)	0.410
Median age (years, range, IQR)	36 (18–70, 26–46)	38 (18–72, 28–48)	< 0.001
Median time dg to HCT (months, range, IQR)	5.7 (1.9–130, 4.6–8)	5.6 (2.3–123, 4.5–7.7)	0.182
Median year of HCT (range)	2012 (2000–2017)	2012 (2000–2017)	0.687
Median donor age (years, range, IQR, missing)	34 (4–73, 26–44, 643)	35 (10–72, 27–44, 293)	0.080
In vivo TCD			0.221
No in vivo TCD	1099 (62%)	565 (60%)	
In vivo TCD	670 (38%)	381 (40%)	
Data missing	47	18	
Remission status at HCT			0.518
CR1	1580 (87%)	847 (88%)	
CR2	236 (13%)	117 (12%)	
ALL subtype			< 0.001
B-ALL Ph-negative	479 (26%)	181 (19%)	
B-ALL Ph-positive	882 (49%)	639 (66%)	
T-ALL	455 (25%)	144 (15%)	
Karnofsky score at HCT			0.203
< 80%	60 (4%)	41 (5%)	
> =80%	1639 (96%)	861 (95%)	
Data missing	117	62	
Engraftment			0.459
Engrafted	1732 (98%)	925 (99%)	
Graft failure	29 (1.7%)	12 (1.3%)	
Data missing	55	27	
Source of stem cells			0.008
Bone marrow	409 (23%)	261 (27%)	
Blood	1407 (78%)	703 (73%)	
Donor type			0.268
Matched sibling	1041 (57%)	531 (55%)	
Unrelated 10/10 match	575 (32%)	308 (32%)	
Unrelated 9/10 match	200 (11%)	125 (13%)	
Conditioning			0.628
Chemotherapy-based	435 (24%)	223 (23%)	
TBI containing	1381 (76%)	741 (77%)	
Patient sex			0.285
Male	1097 (60%)	603 (63%)	
Female	717 (40%)	361 (37%)	
Data missing	2	0	
Donor sex			0.267
Male	1107 (62%)	606 (64%)	
Female	693 (39%)	346 (36%)	
Data missing	16	12	
Donor–recipient sex mismatch			0.411

Table 2 Demographics and transplant details (Continued)

Characteristic	MRD negative	MRD positive	P
Female to male	391 (22%)	195 (20%)	
Other	1409 (78%)	762 (80%)	
Data missing	16	7	
Patient CMV serology			0.950
Negative	637 (37%)	342 (37%)	
Positive	1090 (63%)	582 (63%)	
Data missing	89	40	
Donor CMV serology			0.690
Negative	790 (46%)	414 (45%)	
Positive	927 (54%)	502 (55%)	
Data missing	99	48	
CMV donor/recipient			0.975
Negative to negative	450 (27%)	239 (27%)	
Positive to negative	176 (10%)	99 (11%)	
Negative to positive	317 (19%)	166 (18%)	
Positive to positive	743 (44%)	398 (44%)	
Data missing	130	62	
HCT-comorbidity index			0.128
1 or 2	529 (85%)	271 (81%)	
> =3	92 (15%)	62 (19%)	
Data missing	1195	631	
GVHD prevention			0.054
Cyclosporin	124 (7%)	60 (6%)	
Cyclosporin and MTX	1247 (70%)	702 (74%)	
Cyclosporin and MMF ± MTX	181 (10%)	101 (11%)	
Tacrolimus ± other	115 (7%)	41 (4%)	
Other	103 (6%)	41 (4%)	
Data missing	46	19	
Acute GVHD			0.139
Grade 0–I	1156 (67%)	594 (64%)	
Grade II–IV	564 (33%)	329 (36%)	
Data missing	96	41	
Donor lymphocyte infusion			< 0.001
None received	1681 (93%)	846 (88%)	
Pre-emptive	36 (2%)	48 (5%)	
After relapse	97 (5%)	67 (7%)	
Data missing	2	3	

Abbreviations: CR complete remission, CMV cytomegalovirus, GVHD graft-versus-host disease, HCT hematopoietic cell transplantation, IQR interquartile range, dg diagnosis, MMF mycophenolate mofetil, MTX methotrexate; MRD measurable residual disease, Ph Philadelphia chromosome/BCR-ABL gene rearrangement, TCD T cell depletion

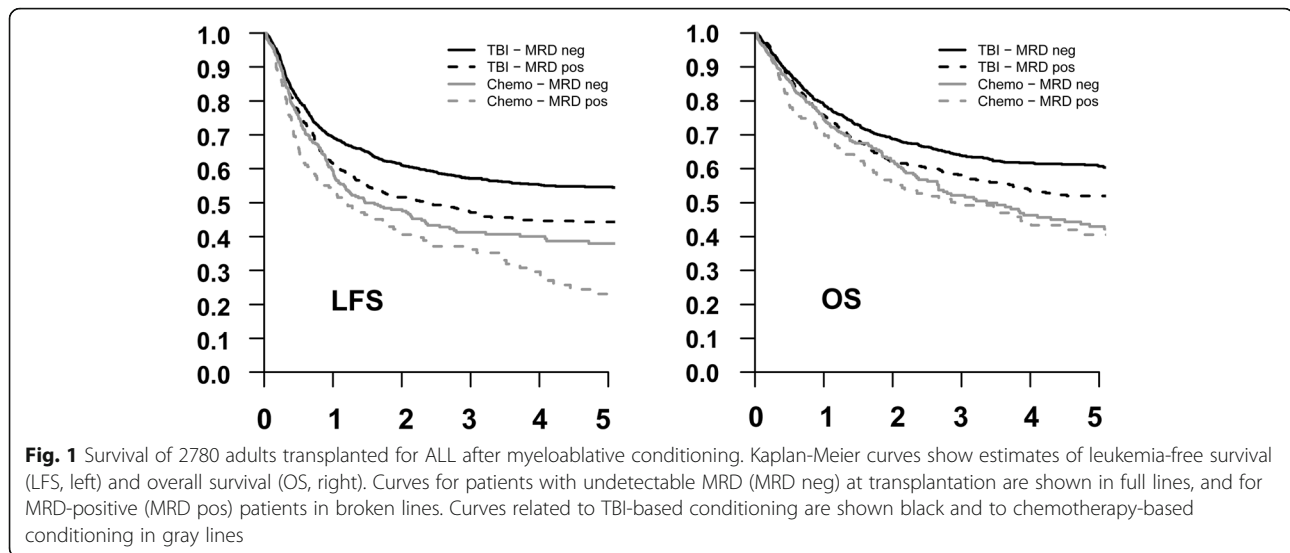
published large analysis by the EBMT suggested advantages of TBI-based over chemotherapy-based regimens, particularly in terms of reduced risk of relapse and improved LFS [21]. This effect was also seen in adults transplanted for primary refractory ALL [22] with a large

tumor bulk as well as in patients with T-ALL, regardless of their remission status [23]. So far, however, the impact of conditioning has not been studied in the context of MRD. It has been unclear if TBI is necessary for patients who achieved MRD negativity as a graft-versus-leukemia

Table 3 Multivariate analysis of factors determining outcomes at 2 years

N = 2156	RI		NRM		LFS		OS		GRFS		Acute GVHD II-IV		Acute GVHD III-IV		Chronic GVHD		Extensive cGVHD	
	HR (95% CI)	P	HR (95% CI)	P	HR (95% CI)	P	HR (95% CI)	P	HR (95% CI)	P	HR (95% CI)	P	HR (95% CI)	P	HR (95% CI)	P	HR (95% CI)	P
MRD pos vs neg	1.51 (1.26–1.80)	<0.001	0.99 (0.80–1.23)	0.928	1.26 (1.10–1.44)	0.001	1.19 (1.02–1.39)	0.028	1.25 (1.10–1.41)	<0.001	1.12 (0.96–1.32)	0.161	1.09 (0.80–1.48)	0.585	1.00 (0.85–1.18)	0.996	0.99 (0.79–1.24)	0.949
Ph neg B-ALL	1	–	1	–	1	–	1	–	1	–	1	–	1	–	1	–	1	–
Ph pos B-ALL	0.94 (0.75–1.18)	0.609	1.43 (1.07–1.91)	0.015	1.12 (0.94–1.33)	0.198	0.94 (0.72–1.14)	0.531	1.02 (0.87–1.19)	0.818	0.96 (0.79–1.17)	0.663	0.87 (0.61–1.25)	0.456	0.95 (0.78–1.16)	0.637	1.08 (0.82–1.42)	0.578
T-ALL	1.11 (0.86–1.43)	0.445	1.11 (0.78–1.58)	0.554	1.13 (0.92–1.39)	0.246	1.06 (0.85–1.33)	0.611	1.03 (0.86–1.25)	0.720	1.10 (0.87–1.39)	0.429	0.84 (0.54–1.30)	0.440	0.84 (0.66–1.06)	0.138	1.01 (0.73–1.41)	0.938
Age (per 10 years)	1.03 (0.96–1.11)	0.369	1.32 (1.22–1.42)	<0.001	1.15 (1.09–1.21)	<0.001	1.21 (1.14–1.28)	<0.001	1.12 (1.06–1.18)	<0.001	1.08 (1.01–1.15)	0.019	1.09 (0.97–1.22)	0.170	1.07 (1.01–1.14)	0.025	1.06 (0.97–1.15)	0.218
Year of HCT	0.97 (0.95–0.99)	0.042	0.97 (0.94–1.00)	0.053	0.97 (0.95–0.99)	0.005	0.98 (0.95–1.01)	0.030	0.99 (0.97–1.00)	0.096	0.98 (0.96–1.01)	0.032	0.97 (0.93–1.01)	0.173	0.97 (0.94–0.99)	0.002	1.01 (0.98–1.04)	0.628
CR2 vs CR1	2.29 (1.83–2.88)	<0.001	1.63 (1.2–2.23)	0.002	2.02 (1.68–2.42)	<0.001	2.11 (1.72–2.59)	<0.001	1.70 (1.43–2.03)	<0.001	1.21 (0.97–1.52)	0.096	1.58 (1.06–2.36)	0.025	1.07 (0.82–1.40)	0.604	1.19 (0.82–1.73)	0.358
KPS >= 90%	1.09 (0.88–1.35)	0.418	1.14 (0.89–1.47)	0.297	1.12 (0.95–1.31)	0.173	1.01 (0.85–1.21)	0.896	1.03 (0.90–1.19)	0.648	0.98 (0.82–1.18)	0.839	0.97 (0.69–1.36)	0.841	1.02 (0.85–1.22)	0.826	1.08 (0.84–1.39)	0.543
UD 10/10	0.66 (0.52–0.83)	<0.001	1.91 (1.45–2.51)	<0.001	1.02 (0.86–1.22)	0.793	1.24 (1.01–1.51)	0.038	1.14 (0.97–1.34)	0.125	1.66 (1.35–2.05)	<0.001	2.02 (1.38–2.95)	<0.001	1.39 (1.14–1.70)	0.001	1.26 (0.96–1.66)	0.099
UD 9/10	0.57 (0.42–0.81)	0.001	2.10 (1.49–2.98)	<0.001	1.01 (0.80–1.27)	0.942	1.31 (1.01–1.69)	0.043	1.02 (0.82–1.26)	0.876	1.73 (1.33–2.26)	<0.001	1.75 (1.04–2.94)	0.035	1.32 (1.01–1.73)	0.042	1.07 (0.73–1.59)	0.716
Blood vs BM	0.90 (0.73–1.10)	0.288	1.07 (0.83–1.38)	0.607	0.95 (0.82–1.11)	0.534	0.39 (0.77–1.12)	0.432	1.17 (1.01–1.36)	0.043	1.08 (0.88–1.33)	0.450	1.14 (0.79–1.65)	0.496	1.44 (1.18–1.76)	<0.001	1.83 (1.37–2.45)	<0.001
Female vs male	0.80 (0.67–0.96)	0.018	0.93 (0.75–1.16)	0.531	0.86 (0.75–0.99)	0.031	0.86 (0.74–1.01)	0.062	0.88 (0.77–0.99)	0.039	0.94 (0.80–1.11)	0.466	0.73 (0.53–1.01)	0.047	0.92 (0.79–1.08)	0.294	0.91 (0.73–1.14)	0.411
Donor fem vs male	0.66 (0.55–0.80)	<0.001	1.29 (1.05–1.60)	0.018	0.89 (0.77–1.02)	0.098	0.97 (0.83–1.13)	0.671	0.96 (0.85–1.09)	0.519	1.11 (0.94–1.30)	0.209	1.00 (0.73–1.37)	0.986	1.33 (1.13–1.55)	<0.001	1.23 (0.99–1.53)	0.0593
Pt CMV pos vs neg	0.93 (0.76–1.13)	0.447	1.23 (0.98–1.56)	0.081	1.06 (0.91–1.23)	0.462	1.24 (1.05–1.47)	0.014	1.02 (0.89–1.17)	0.784	0.96 (0.80–1.13)	0.603	1.01 (0.73–1.41)	0.943	0.10 (0.84–1.19)	0.972	1.04 (0.81–1.32)	0.780
Dr CMV pos vs neg	1.12 (0.92–1.36)	0.276	0.89 (0.71–1.11)	0.300	0.99 (0.86–1.15)	0.931	0.95 (0.81–1.12)	0.548	1.07 (0.94–1.23)	0.315	1.08 (0.91–1.28)	0.364	1.11 (0.80–1.54)	0.523	1.18 (1.00–1.40)	0.0567	1.30 (1.02–1.65)	0.036
TBI vs chemo	0.60 (0.49–0.74)	<0.001	0.87 (0.68–1.12)	0.292	0.70 (0.60–0.82)	<0.001	0.75 (0.62–0.90)	0.002	0.88 (0.76–1.03)	0.104	1.18 (0.95–1.46)	0.126	1.02 (0.69–1.51)	0.922	1.23 (0.99–1.52)	0.0647	1.27 (0.93–1.75)	0.131
In vivo TCD vs no TCD	1.22 (0.97–1.53)	0.090	0.68 (0.52–0.88)	0.004	0.94 (0.79–1.12)	0.494	0.84 (0.69–1.02)	0.077	0.75 (0.64–0.88)	<0.001	0.72 (0.59–0.89)	0.002	0.51 (0.33–0.75)	<0.001	0.58 (0.47–0.71)	<0.001	0.48 (0.36–0.64)	<0.001
Center (fertility)	–	0.314	–	0.17	–	0.295	–	0.015	–	0.019	–	<0.001	–	<0.001	–	0.028	–	0.004

Abbreviations: BM bone marrow, CR complete remission, CMV cytomegalovirus, dr donor, GVHD graft-versus-host disease, GRFS GVHD-free and relapse-free survival, HCT hematopoietic cell transplantation, KPS Karnofsky performance score, LFS leukemia-free survival, MRD measurable residual disease, NRM non-relapse mortality, OS overall survival, Ph Philadelphia chromosome/BCR-ABL gene rearrangement, pt patient, RI relapse incidence, TCD T cell depletion, UD unrelated donor



effect may be sufficient to eliminate very low level of residual disease.

This study showed significantly superior outcomes with the use of TBI-based conditioning in both MRD-positive and MDR-negative patients, but the impact of MRD did not differ significantly between the TBI-based or chemotherapy-based conditioning. MRD positivity was associated with lower OS and LFS and higher RI in the larger ($n = 1943$) TBI subgroup, and with higher RI in the smaller ($n = 571$) chemotherapy subgroup. The reasons for this cannot be concluded from this study, but it is possible that ALL cells are able to escape the effect of chemotherapy in sanctuary sites such as CNS, and/or that the ALL is simply more susceptible to effects of radiotherapy. No patients received radiotherapy before starting transplantation conditioning, so irradiation represents a different anti-leukemic treatment modality to chemotherapy in patients transplanted after TBI-based conditioning. Also, patients in this cohort did not receive modern immunotherapy such as inotuzumab, ozogamicin, or blinatumomab that are able to induce MRD negativity on their own [24, 25] or in addition to chemotherapy [26, 27]. It is likely that with the use of these agents, more patients may become MRD-negative. Whether they will or will not benefit from TBI-based conditioning as the MRD-negative patients in this cohort remains unclear, but clinicians should not rush into rejecting TBI-based conditioning in patients with ALL.

Compared to related donors, unrelated donors both 10/10 and 9/10 had a lower incidence of relapse. This suggests better anti-leukemic activity and increased GVHD with lower degree of histocompatibility. Unlike in recent studies of T cell-replete haploidentical transplantation with post-transplantation cyclophosphamide [28, 29], this increase in anti-leukemic activity did not

improve OS due to higher incidence of aGVHD, cGVHD, and NRM.

Interestingly, *in vivo* T cell depletion was associated with higher RI, lower NRM, and lower incidence of aGVHD and cGVHD only in patients who received TBI-based, but not chemotherapy-based conditioning. This phenomenon may suggest more profound immune allogeneic effect in conjunction with the use of TBI-based conditioning, perhaps due to more significant lymphodepletion seen in animal experiments after TBI but not after chemotherapy [17, 18]. Some previous publications suggested an increased incidence of GVHD after TBI-based conditioning [30, 31], but there is also data in contrary to this [32]. Surprisingly, in the chemotherapy-based, but not TBI-based conditioning subgroup, MRD-positive patients experienced higher RI, but comparable LFS and OS. Although it is possible to speculate that patients who relapsed after chemotherapy-based conditioning benefited more from salvage treatments with donor lymphocytes, the difference may be also due to the size of the groups and resulting statistical power.

Although the majority of EBMT centers use highly sensitive methods of MDR detection [33], and our additional audit showed that all 56 centers but 1 regarded an MRD level of 10^{-4} or lower as negative (for one center this was less than 10^{-3}), an obvious limitation of this registry study is the lack of access to details of MRD methodologies and targets used in individual patients. However, the proportion of reported MRD-positive cases seen was 35% of the total eligible for the study and this is similar to the 21 to 38% reported in studies where detailed review of MRD methodology and targets were feasible [34, 35]. Centers were required to declare the MRD status of patients prior to HCT, but we did not have access to the precise timing of the relevant

MRD assay. Another important issue is potential heterogeneity of conditioning regimens within the TBI and chemotherapy groups [36].

The challenge of how best to manage MRD positivity pre-HCT in the clinic is a familiar dilemma since further therapy may incur toxicity that renders subsequent HCT undeliverable or may result in frank relapse should the leukemia show resistance to the new treatment modality. In the post-HCT setting, management of MRD-positive patients has involved strategies such as rapid withdrawal of immunosuppressive medication, pre-emptive use of donor lymphocyte infusions, and maintenance therapy with tyrosine kinase inhibitors in Philadelphia-positive patients. In the future, immunotherapy such as blinatumomab [37], chimeric antigen receptor T cells, natural killer cells, or check-point inhibitors may be useful mostly in patients with B cell ALL.

Conclusions

In this large study, we confirmed that adult patients with acute lymphoblastic leukemia who are MRD-negative prior to HCT achieve superior outcomes. This was particularly apparent with the use of TBI-based conditioning. With increasing availability of new therapies MRD negativity is likely to become achievable for more patients, hopefully leading to improved treatment outcomes. As all patients with ALL irrespective of MRD status benefit from TBI-based conditioning, avoidance of it on the basis of achievement of MRD negativity is not justified.

Supplementary information

Supplementary information accompanies this paper at <https://doi.org/10.1186/s13045-019-0790-x>.

Additional file 1. List of all institutions reporting data included in this study.

Additional file 2. Univariate analysis of factors determining outcomes of transplantation at 2 years.

Additional file 3. A. Univariate planned sub-analyses performed separately in subgroups of patients transplanted after chemotherapy-based and TBI-based conditioning. Abbreviations: GVHD, graft-versus-host disease; GRFS, GVHD-free and relapse-free survival; LFS, leukemia free survival; MRD, measurable residual disease; NRM, non-relapse mortality; OS, overall survival; RI, relapse incidence. B. Multivariate planned sub-analyses performed separately in subgroups of patients transplanted after chemotherapy-based conditioning (571 patients of whom 382 were MRD negative and 205 MRD positive) and TBI-based conditioning (1943 patients of whom 1278 were MRD negative and 680 MRD positive). Abbreviations: BM, bone marrow; CR, complete remission; CMV, cytomegalovirus; GVHD, graft-versus-host disease; GRFS, GVHD-free and relapse-free survival; KPS, Karnofsky performance score; LFS, leukemia free survival; MRD, measurable residual disease; NRM, non-relapse mortality; OS, overall survival; Ph, Philadelphia chromosome/BCR-ABL gene rearrangement; RI, relapse incidence; TCD, T-cell depletion; UD, unrelated donor.

Abbreviations

aGVHD: Acute graft-versus-host disease; ALL: Acute lymphoblastic leukemia; ALWP: Acute leukemia working party; cGVHD: Chronic graft-versus-host-disease; CI: Confidence interval; EBMT: European Society for Blood and Marrow Transplantation; GRFS: GVHD-free and relapse-free survival; GVHD: Graft-

versus-host-disease; HCT: Hematopoietic cell transplantation; HR: Hazard ratio; LFS: Leukemia-free survival; MRD: Measurable residual disease; NRM: Non-relapse mortality; OS: Overall survival; RI: Relapse incidence; TBI: Total body irradiation

Acknowledgements

We thank all EBMT centers and national registries for contributing patients to the study and data managers for their superb work. Supplementary information is available at the EBMT website. The list of all institutions reporting data included in this study is available in the Additional file 1.

Authors' contributions

JPav, AN, ML, and SG designed the study. ML, AN, and MM performed the statistical analysis. JPav wrote the manuscript. RN, GS, IY-A, DW, PR, JPas, DWB, MA, NK, HLW, and ZP provided cases for the study. All authors edited and approved the manuscript.

Funding

The study was supported in part by the National Institute for Health Research Biomedical Research Centre based at Imperial College London.

Availability of data and materials

The dataset supporting the conclusions of this article are available in the ALWP of EBMT in Paris, 184 rue Faubourg Saint Antoine.

Ethics approval and consent to participate

The scientific boards of the ALWP of EBMT approved this study. All patients gave written informed consent for the use of their data.

Consent for publication

Not applicable.

Competing interests

The authors declare that they have no competing interests.

Author details

¹Centre for Haematology, Imperial College London at Hammersmith Hospital, Du Cane Road, London W12 0HS, UK. ²Department of Haematology, EBMT Paris Study Office/CEREST-TC/Saint Antoine Hospital, Paris, France. ³Stem Cell Transplantation Unit, HUCH Comprehensive Cancer Center, Helsinki, Finland. ⁴Hematology-BMT, Saint Louis Hospital, Paris, France. ⁵Service des Maladies du Sang, Hôpital Claude Huriez, CHRU Lille, Lille, France. ⁶Department of Hematology, the First Affiliated Hospital of Soochow University, Soochow, China. ⁷Délepesti Centrumkórház-Országos Hematológiai és Infektológiai Intézet, Budapest, Hungary. ⁸University Hospital Basel, Basel, Switzerland. ⁹Department of Bone Marrow Transplantation, University Hospital of Essen, Essen, Germany. ¹⁰Department of Oncology, King Faisal Specialist Hospital and Research Center, Riyadh, Saudi Arabia. ¹¹Bone Marrow Transplantation Centre, University Hospital Eppendorf, Hamburg, Germany. ¹²Service d'hématologie, Centre Hospitalier Lyon Sud, Lyon, France. ¹³Zavod za hematologiju, Klinika za unutarnje bolesti, Zagreb, Croatia. ¹⁴Maria Skłodowska-Curie Memorial Cancer Center and Institute of Oncology, Gliwice, Poland. ¹⁵Division of Hematology and Bone Marrow Transplantation, Chaim Sheba Medical Center, Tel-Hashomer and Sackler School of Medicine, Ramat Gan, Israel.

Received: 19 July 2019 Accepted: 10 September 2019

Published online: 23 October 2019

References

- Berry DA, Zhou S, Higley H, et al. Association of minimal residual disease with clinical outcome in pediatric and adult acute lymphoblastic leukemia: a meta-analysis. *JAMA Oncol.* 2017;3:e170580.
- Knechtli CJ, Goulden NJ, Hancock JP, et al. Minimal residual disease status before allogeneic bone marrow transplantation is an important determinant of successful outcome for children and adolescents with acute lymphoblastic leukemia. *Blood.* 1998;92:4072–9.
- Bader P, Hancock J, Kreyenberg H, et al. Minimal residual disease (MRD) status prior to allogeneic stem cell transplantation is a powerful predictor for post-transplant outcome in children with ALL. *Leukemia.* 2002;16:1668–72.

4. Sramkova L, Muzikova K, Fronkova E, et al. Detectable minimal residual disease before allogeneic hematopoietic stem cell transplantation predicts extremely poor prognosis in children with acute lymphoblastic leukemia. *Pediatr Blood Cancer*. 2007;48:93–100.
5. Spinelli O, Peruta B, Tosi M, et al. Clearance of minimal residual disease after allogeneic stem cell transplantation and the prediction of the clinical outcome of adult patients with high-risk acute lymphoblastic leukemia. *Haematologica*. 2007;92:612–8.
6. Doney K, Gooley TA, Deeg HJ, Flowers MED, Storb R, Appelbaum FR. Allogeneic hematopoietic cell transplantation with full-intensity conditioning for adult acute lymphoblastic leukemia: results from a single center, 1998–2006. *Biol Blood Marrow Transplant*. 2011;17:1187–95.
7. Bader P, Kreyenberg H, Henze GHR, et al. Prognostic value of minimal residual disease quantification before allogeneic stem-cell transplantation in relapsed childhood acute lymphoblastic leukemia: the ALL-REZ BFM study group. *J Clin Oncol*. 2009;27:377–84.
8. Shen Z, Gu X, Mao W, et al. Influence of pre-transplant minimal residual disease on prognosis after Allo-SCT for patients with acute lymphoblastic leukemia: systematic review and meta-analysis. *BMC Cancer*. 2018;18:755.
9. Gilleece MH, Labopin M, Yakoub-Agha I, et al. Measurable residual disease, conditioning regimen intensity, and age predict outcome of allogeneic hematopoietic cell transplantation for acute myeloid leukemia in first remission: a registry analysis of 2292 patients by the acute leukemia working party E. *Am J Hematol*. 2018;93:1142–52.
10. European Society for Blood and Marrow Transplantation. www.ebmt.org. Accessed 10 Dec 2018.
11. Bacigalupo A, Ballen K, Rizzo D, et al. Defining the intensity of conditioning regimens: working definitions. *Biol Blood Marrow Transplant*. 2009;15:1628–33.
12. Ruggeri A, Labopin M, Ciceri F, Mohty M, Nagler A. Definition of GvHD-free, relapse-free survival for registry-based studies: an ALWP–EBMT analysis on patients with AML in remission. *Bone Marrow Transplant*. 2016;51:610–1.
13. Hougaard P. Frailty models for survival data. *Lifetime Data Anal*. 1995;1:255–73.
14. Andersen PK, Klein JP, Zhang MJ. Testing for Centre effects in multi-Centre survival studies: a Monte Carlo comparison of fixed and random effects tests. *Stat Med*. 1999;18:1489–500.
15. R Development Core Team. R: A Language and Environment for Statistical Computing. Vienna: R Foundation for Statistical Computing; 2008. <http://www.R-project.org>
16. Curtis RE, Rowlings PA, Deeg HJ, et al. Solid cancers after bone marrow transplantation. *N Engl J Med*. 1997;336:897–904.
17. Elson LA, Galton DA, Till M. The action of chlorambucil (CB. 1348) and busulphan (myleran) on the haemopoietic organs of the rat. *Br J Haematol*. 1958;4:355–74.
18. Kolb HJ, Storb R, Weiden PL, et al. Immunologic, toxicologic and marrow transplantation studies in dogs given dimethyl myleran. *Biomedicine*. 1974;20:341–51.
19. Bunin N, Aplenc R, Kamani N, Shaw K, Cnaan A, Simms S. Randomized trial of busulfan vs total body irradiation containing conditioning regimens for children with acute lymphoblastic leukemia: a pediatric blood and marrow transplant consortium study. *Bone Marrow Transplant*. 2003;32:543–8.
20. Peters C et al. ALL SCTped 2012 FORUM trial. Available at: <https://clinicaltrials.gov/ct2/show/NCT01949129> [Accessed 9 Sept. 2019].
21. Giebel S, Labopin M, Socié G, et al. Improving results of allogeneic hematopoietic cell transplantation for adults with acute lymphoblastic leukemia in first complete remission: an analysis from the acute leukemia working party of the European Society for blood and marrow transplantation. *Haematologica*. 2017;102:139–49.
22. Pavlů J, Labopin M, Zoellner AK, et al. Allogeneic hematopoietic cell transplantation for primary refractory acute lymphoblastic leukemia: a report from the acute leukemia working party of the EBMT. *Cancer*. 2017;123:1965–70.
23. Cahu X, Labopin M, Giebel S, et al. Impact of conditioning with TBI in adult patients with T-cell ALL who receive a myeloablative allogeneic stem cell transplantation: a report from the acute leukemia working party of EBMT. *Bone Marrow Transplant*. 2016;51:351–7.
24. Topp MS, Gökbuget N, Zugmaier G, et al. Phase II trial of the anti-CD19 bispecific T cell-engager blinatumomab shows hematologic and molecular remissions in patients with relapsed or refractory B-precursor acute lymphoblastic leukemia. *J Clin Oncol*. 2014;32:4134–40.
25. DeAngelo DJ, Stock W, Stein AS, et al. Inotuzumab ozogamicin in adults with relapsed or refractory CD22-positive acute lymphoblastic leukemia: a phase 1/2 study. *Blood Adv*. 2017;1:1167–80.
26. Gökbuget N, Dombret H, Bonifacio M, et al. Blinatumomab for minimal residual disease in adults with B-cell precursor acute lymphoblastic leukemia. *Blood*. 2018;131:1522–31.
27. Jabbour E, Ravandi F, Kebriaei P, et al. Salvage chemoinmunotherapy with inotuzumab ozogamicin combined with mini-hyper-CVD for patients with relapsed or refractory Philadelphia chromosome-negative acute lymphoblastic leukemia: a phase 2 clinical trial. *JAMA Oncol*. 2018;4:230–4.
28. Chang YJ, Wang Y, Liu YR, et al. Haploidentical allograft is superior to matched sibling donor allograft in eradicating pre-transplantation minimal residual disease of AML patients as determined by multiparameter flow cytometry: a retrospective and prospective analysis. *J Hematol Oncol*. 2017;10:134.
29. Mariotti J, Devillier R, Bramanti S, et al. T cell-replete haploidentical transplantation with post-transplantation cyclophosphamide for Hodgkin lymphoma relapsed after autologous transplantation: reduced incidence of relapse and of chronic graft-versus-host disease compared with HLA-identical related donors. *Biol Blood Marrow Transplant*. 2018;24:627–32.
30. Clift RA, Buckner CD, Thomas ED, et al. Marrow transplantation for chronic myeloid leukemia: a randomized study comparing cyclophosphamide and total body irradiation with busulfan and cyclophosphamide. *Blood*. 1994;84:2036–43.
31. Nagler A, Rocha V, Labopin M, et al. Allogeneic hematopoietic stem-cell transplantation for acute myeloid leukemia in remission: comparison of intravenous busulfan plus cyclophosphamide (cy) versus total-body irradiation plus cy as conditioning regimen—a report from the acute leukemia working Party of the European Group for blood and marrow transplantation. *J Clin Oncol*. 2013;31:3549–56.
32. Ringden O, Ruutu T, Remberger M, et al. A randomized trial comparing busulfan with total body irradiation as conditioning in allogeneic marrow transplant recipients with leukemia: a report from the Nordic bone marrow transplantation group. *Blood*. 1994;83:2723–30.
33. Giebel S, Marks DI, Boissel N, et al. Hematopoietic stem cell transplantation for adults with Philadelphia chromosome-negative acute lymphoblastic leukemia in first remission: a position statement of the European working Group for Adult Acute Lymphoblastic Leukemia (EWALL) and the acute leukemia working Party of the European Society for blood and marrow transplantation (EBMT). *Bone Marrow Transplant*. 2019;54:798–809.
34. Zhou Y, Slack R, Jorgensen JL, et al. The effect of peritransplant minimal residual disease in adults with acute lymphoblastic leukemia undergoing allogeneic hematopoietic stem cell transplantation. *Clin Lymphoma Myeloma Leuk*. 2014;14:319–26.
35. Dhedin N, Huynh A, Maury S, et al. Role of allogeneic stem cell transplantation in adult patients with Ph-negative acute lymphoblastic leukemia. *Blood*. 2015;125:2486–96.
36. Giebel S, Miszczyk L, Slosarek K, et al. Extreme heterogeneity of myeloablative total body irradiation techniques in clinical practice: a survey of the acute leukemia working party of the European Group for blood and marrow transplantation: TBI techniques in current clinical practice. *Cancer*. 2014;120:2760–5.
37. Khan MW, Gul Z. Blinatumomab may induce graft versus host leukemia in patients with pre-B ALL relapsing after hematopoietic stem cell transplant. *Clin Case Rep*. 2016;4:743–6.

Publisher's Note

Springer Nature remains neutral with regard to jurisdictional claims in published maps and institutional affiliations.

Ready to submit your research? Choose BMC and benefit from:

- fast, convenient online submission
- thorough peer review by experienced researchers in your field
- rapid publication on acceptance
- support for research data, including large and complex data types
- gold Open Access which fosters wider collaboration and increased citations
- maximum visibility for your research: over 100M website views per year

At BMC, research is always in progress.

Learn more biomedcentral.com/submissions

