



**HAL**  
open science

## **Focus at 250 ka within the Neandertal lineage: comparison of teeth from Biache-Saint-Vaast (Pas-de-Calais) and Payre (Ardèche) in France**

Amélie Vialet, Laura Martín-Francés, Marina Martínez de Pinillos, Benoît Bertrand, Louise Magne, Dominique Grimaud-Herve, María Martínón-Torres, José María Bermúdez de Castro, Marie-Hélène Moncel

### ► To cite this version:

Amélie Vialet, Laura Martín-Francés, Marina Martínez de Pinillos, Benoît Bertrand, Louise Magne, et al.. Focus at 250 ka within the Neandertal lineage: comparison of teeth from Biache-Saint-Vaast (Pas-de-Calais) and Payre (Ardèche) in France. 1849èmes journées de la SAP, Jan 2024, Bordeaux, France. hal-04434343

**HAL Id: hal-04434343**

**<https://hal.univ-lille.fr/hal-04434343v1>**

Submitted on 2 Feb 2024

**HAL** is a multi-disciplinary open access archive for the deposit and dissemination of scientific research documents, whether they are published or not. The documents may come from teaching and research institutions in France or abroad, or from public or private research centers.

L'archive ouverte pluridisciplinaire **HAL**, est destinée au dépôt et à la diffusion de documents scientifiques de niveau recherche, publiés ou non, émanant des établissements d'enseignement et de recherche français ou étrangers, des laboratoires publics ou privés.

# Focus at 250 ka within the Neandertal lineage: comparison of teeth from Biache-Saint-Vaast (Pas-de-Calais) and Payre (Ardèche) in France

A. VIALET<sup>1</sup>, L. MARTÍN-FRANCES<sup>2,3</sup>, M. MARTÍNEZ DE PINILLOS<sup>3,6</sup>, B. BERTRAND<sup>5</sup>, L. MAGNE<sup>5</sup>, D. GRIMAUD-HERVE<sup>1</sup>, M. MARTINÓN-TORRES<sup>3,4,6</sup>, J.-M. BERMÚDEZ DE CASTRO<sup>3,4</sup>, M.-H. MONCEL<sup>1</sup>

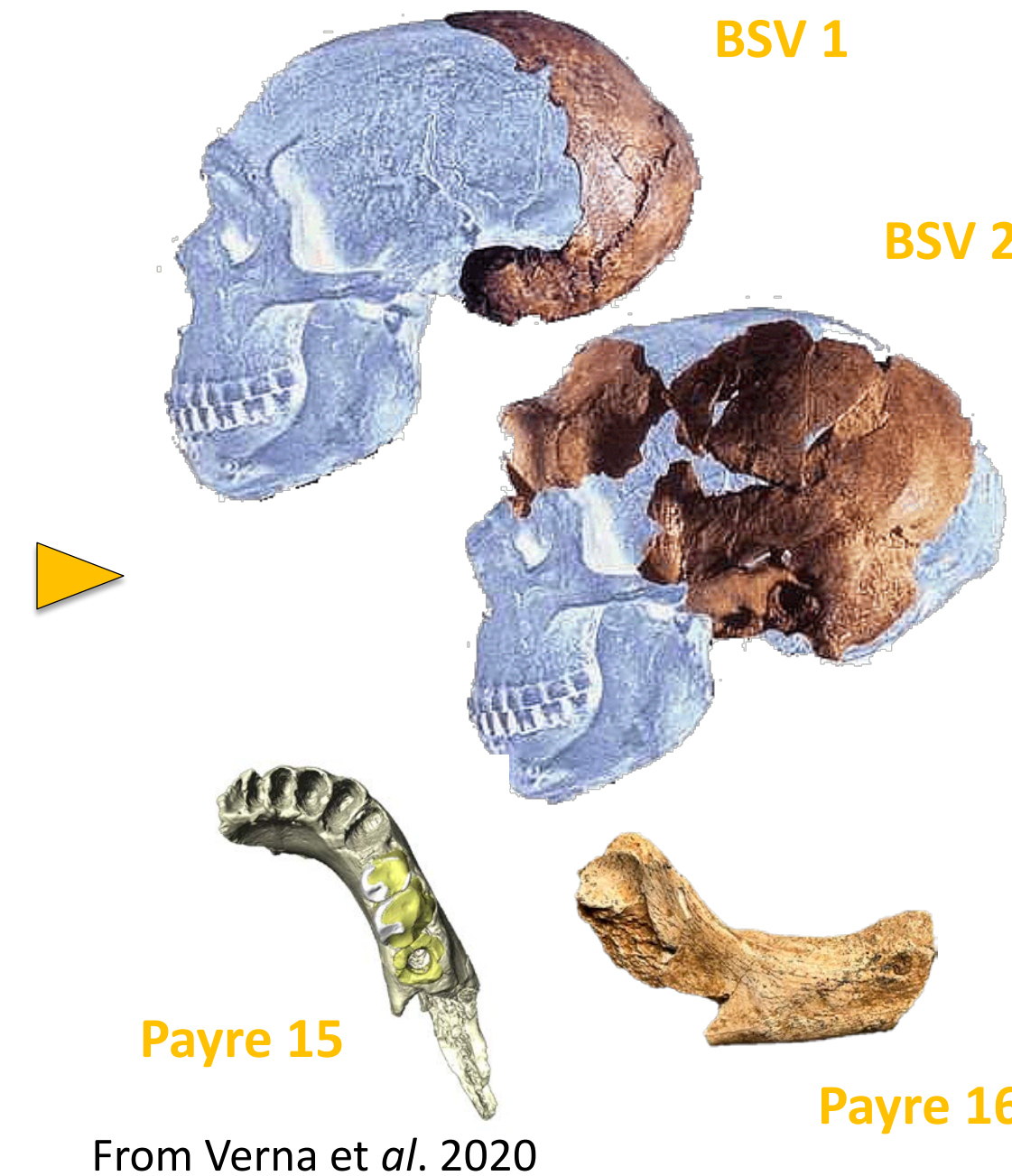
<sup>1</sup>Muséum national d'Histoire naturelle, UMR 7194 du CNRS, UPVD, Paris, France <sup>2</sup>Centro Mixto Universidad Complutense de Madrid - Instituto de Salud Carlos III de Evolución y Comportamiento Humanos, Madrid, Spain <sup>3</sup>Centro nacional de Investigación sobre la Evolución Humana (CENIEH), Burgos, Spain

<sup>4</sup>Department of Anthropology, University College, London, UK <sup>5</sup>Forensic Taphonomy Unit, EA7367 - IML, Lille university, France <sup>6</sup>Laboratorio de Evolución Humana (LEH), Departamento de Ciencias Historicas y Geografía, Universidad de Burgos, Hospital del Rey S/N, Burgos, Spain

## Introduction

This paper aims at comparing two contemporary anthropological series from the following French sites: **Biache-Saint-Vaast-BSV** (an open-air site in the North of France) and **Payre** (a rock-shelter in the Rhone valley, south of France). Both have yielded human remains from archaeological levels whose chronological attribution is around **250 ka, i.e. at the time of the emergence of the classic Neandertal form in Europe.**

At **BSV**, skull fragments from 2 individuals and 11 maxillary teeth from a single individual were discovered. At **Payre**, 2 parietal fragments probably from the same individual, 10 lower & 3 upper teeth and 2 fragmentary mandibles were unearthed. We have concentrated on the study of teeth, the most abundant and least studied material to date. Only **UP3 and UM2** are represented at **both sites**, enabling direct comparisons.

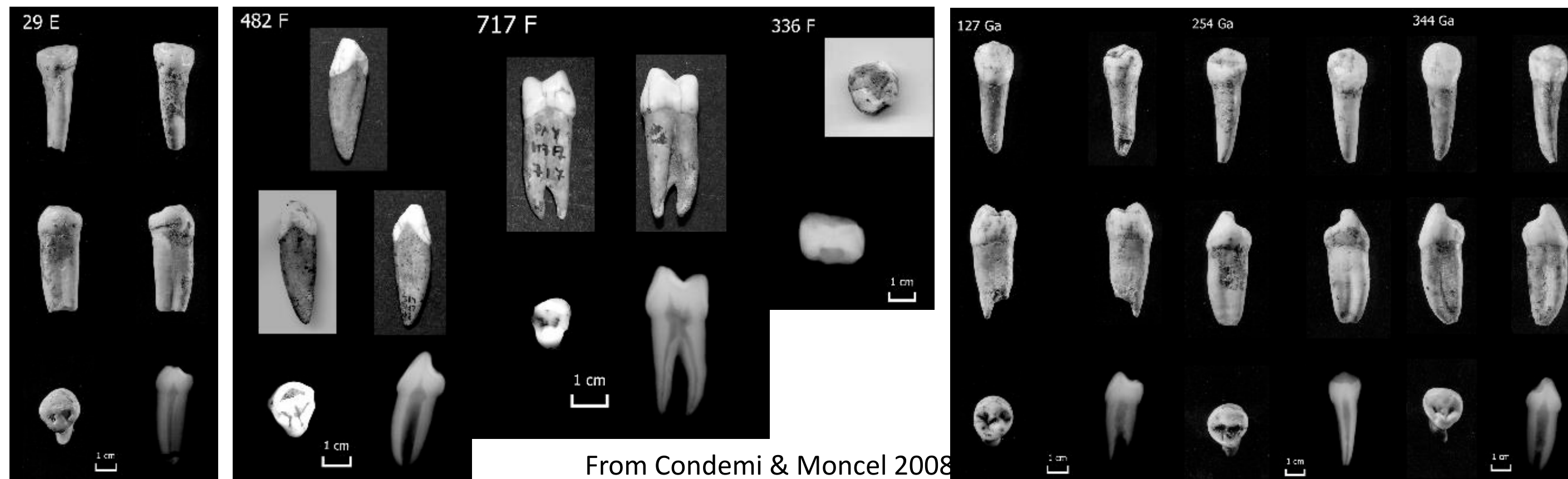


From Verna et al. 2020

## BSV & Payre

Isolated teeth from **Payre** (right) by archaeological level (E, F, Ga, Gb - from left to right).

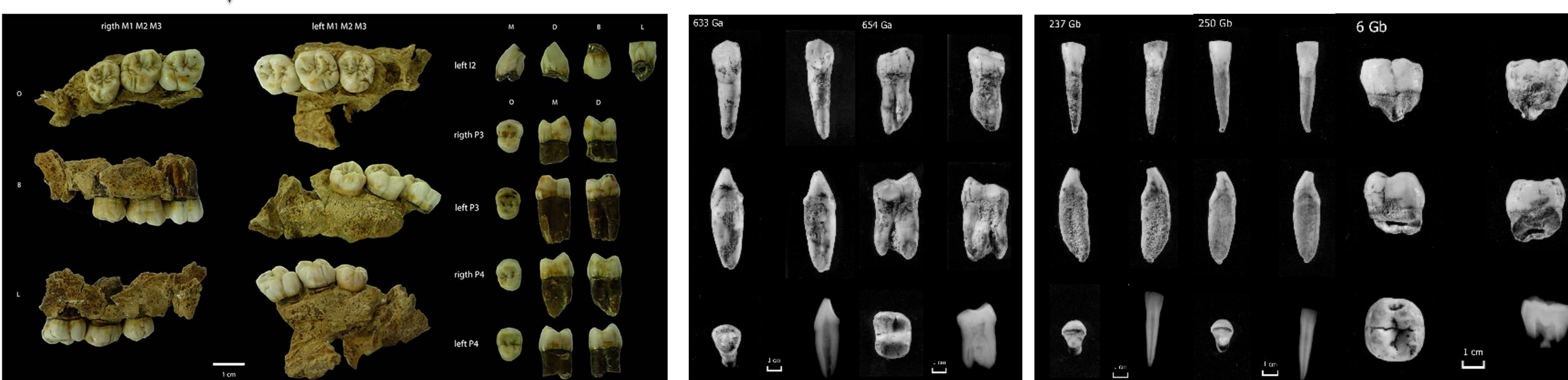
Maxillary teeth of **BSV**: right and left molars are still in the arcades; L1, RP3, LP3, RP4, LP4 are isolated teeth from the same individual (bottom).



From Condemi & Moncel 2008

**Material:** the comparative sample consists of **teeth (N > 200 in total)** from **Middle Pleistocene populations, Neandertals and Homo sapiens** (see Martín-Francis et al. 2022). **High-resolution  $\mu$ CT scanning** of the fossil and modern material was performed at the *Muséum national d'Histoire naturelle*, France (AST-RX Platform) and at CENIEH, Spain.

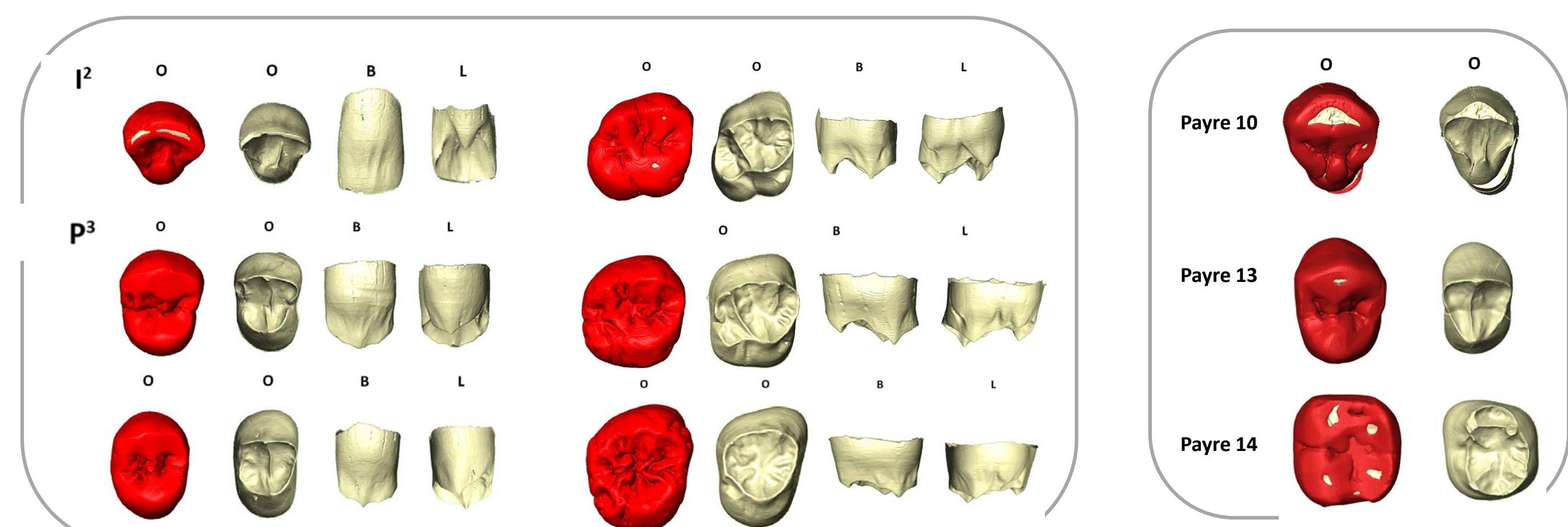
**Methods:** **3D virtual segmentation of the dental tissues** (enamel, dentine and pulp) was performed in Amira (6.3.0, FEI Inc.); **Metric analyses** comprised mesio-distal (MD) and bucco-lingual (BL) diameters, crown index (CI) and total computed crown base area (TCBA); For the characterisation of the **enamel (OES) morphological traits** we employed the modified version of the **ASUDAS** (Turner et al. 1991) by Martínón-Torres et al. (2012). For the **Geometric morphometric (GM)** analyses of the EDJ of the premolars, we placed one landmark on each of the dentine horn tips (protocone/-id and metacone/-id) and 49 semilandmarks along the marginal ridges. We performed **weighted between-group principal component analysis (bgPCA)**.



The BSV teeth, From Martín-Francis et al. 2022

Top, from left to right: LLP4 (Payre 9), URC (Payre 10), URP3 (Payre 13), LLM2 (Payre 14), LLP4 (Payre 6), LRP3 (Payre 4), LLP3 (Payre 8); Bottom, from left to right: LRC (Payre 11), ULM2 (Payre 12), LLI2 (Payre 2), LLI1 (Payre 3), LLM1 (Payre 1).

## 1 Neandertal-like morphological traits



**BSV teeth:** views of the occlusal faces at OES and EDJ (left) and buccal and lingual surfaces at the EDJ (right), *not at scale*, from Martín-Francis et al. 2022

**Payre teeth:** views of the occlusal faces at OES and EDJ, *not at scale*

In the **BSV** specimens, at the OES and EDJ, mostly typical Neandertal traits are observed. For examples, on premolars: **a continuous transverse crest, both buccal and lingual essential crests bifurcated (ULP3), an interrupted transverse crest and a distal accessory ridge (URP3).** Typical Neandertal traits are also observed in the **Payre** teeth: **a well-developed tuberculum dentale and marginal ridges on the upper right canine (Payre 10), a continuous transverse crest on the right P3 (Payre 13); a continuous mid-trigonid crest with a deep and pit-like anterior fovea on the lower left M2 (Payre 14).**

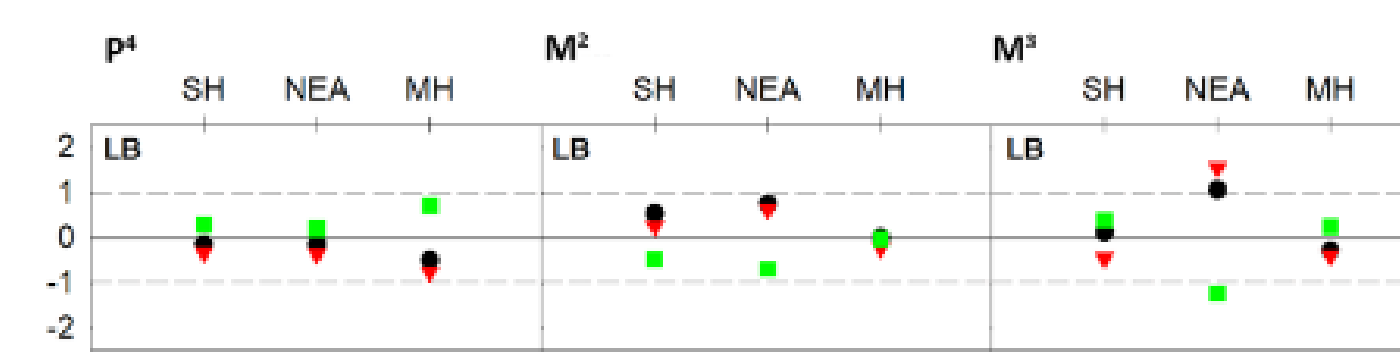
## Conclusions

Our results show that the BSV and Payre fossils, dated at around 250 ka, are part of Middle Pleistocene hominins variation. Concerning the enamel and dentine morphology, **the teeth exhibit the typical Neandertal pattern. However, concerning the ET, they show an intermediate pattern.** The two incisors from Payre are well outside the range of Neandertals as well as UP3 in the GM analysis. **As expressed in the mandible, teeth from Payre are not completely Neandertal. The ones from BSV, even contemporary to Payre, seem more derived.**

## Acknowledgements

MMP has the support of the European Research Council (ERC) under the European Union's Horizon 2020 research and innovation program (Tied2Teeth, grant agreement no. 101054659). LMF is a MSCA-fellow and financial support from EU Project: 101060482 — BITE— HORIZON-MSCA-2021-PF-01.

## 2 Intermediate pattern of the enamel thickness

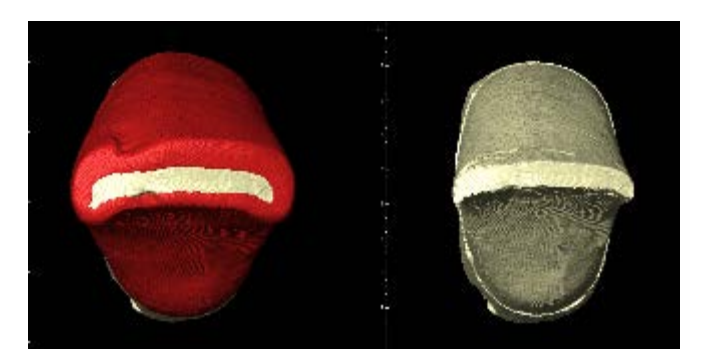


**BSV teeth show a unique combination of thin (premolars) and thick (molars) enamelled dentition.**

For the LP3 of **Payre**, the results are **intermediate** between the low values of Neandertals and the high values of modern humans. For LP4, the AET, RET and percentage of dentine **align this it with the Sima de los Huesos and modern humans.**

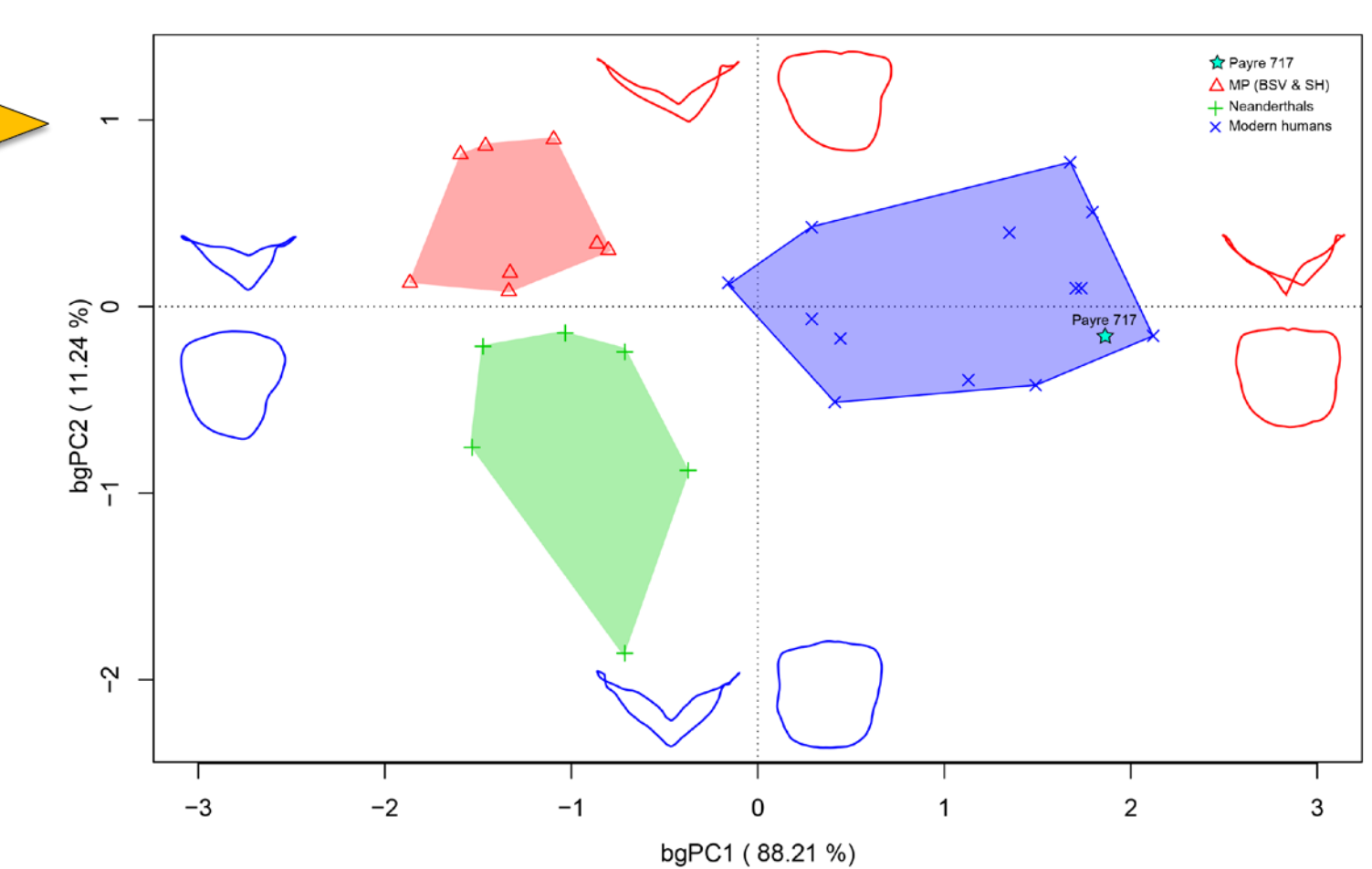
## 3 Some peculiarities among the Payre teeth

Regarding the morphological traits of **lower incisors (Payre 2&3)**, both display a **simpler configuration than the typical Neandertal patterns:** weak convexity of the labial surface, no expression of tuberculum dentale and only a faint shovel shape. It's far from the Neandertal condition as well as the one observed on BSV.



**Payre 2 (LRI2):** occlusal faces at OES and EDJ, *not at scale*

**GM analysis shows that the UP3 (Payre 13) is characterized by a quadrangular EDJ rim and the lingual cusp slightly displaced mesially.** On the contrary, the BSV, Sima de los Huesos and Neandertals are characterized by a more compressed mesio-distal diameter and the lingual and buccal horns at EDJ are centered.



## References

- Condemi S., Moncel M.-H. 2008. Les restes humains, in Le site de Payre (dir. Moncel), mémoire 46, SPF, p.131-151 / Martín-Francis L. et al. 2022. Middle Pleistocene Hominin teeth from Biache-Saint-Vaast (France). *Archaeological and Anthropological Sciences* / Turner C.G. et al. 1991. Scoring procedures for key morphological traits of the permanent dentition: the Arizona State University dental anthropology system. In: Kelley M, Larsen C (eds) *Advances in dental anthropology*. Wiley-Liss, New York, p. 13-31 / Martínón-Torres M. et al. 2012. Morphological description and comparison of the dental remains from Atapuerca-Sima de los Huesos site (Spain). *Journal of Human Evolution* 62: 7-58 / Verna C. et al. 2020. The Middle Pleistocene Hominin Mandible from Payre (Ardèche, France). *Journal of Human Evolution* 144: 102775