



**HAL**  
open science

# Haploidentical Versus Matched Sibling Donor Hematopoietic Stem Cell Transplantation for Adult Patients With Relapsed/Refractory Acute Lymphoblastic Leukemia: A Study From the Acute Leukemia Working Party of the European Society for Blood and Marrow Transplantation.

A. Nagler, Myriam Labopin, R. Swoboda, P. Pioltelli, M. Arat, Ibrahim Yakoub-Agha, A. Kulagin, A. Maria Raiola, H. Ozdogu, A. Risitano, et al.

► **To cite this version:**

A. Nagler, Myriam Labopin, R. Swoboda, P. Pioltelli, M. Arat, et al.. Haploidentical Versus Matched Sibling Donor Hematopoietic Stem Cell Transplantation for Adult Patients With Relapsed/Refractory Acute Lymphoblastic Leukemia: A Study From the Acute Leukemia Working Party of the European Society for Blood and Marrow Transplantation.. HemaSphere, 2022, HemaSphere, 6, pp.e790. 10.1097/HS9.0000000000000790 . hal-04504414

**HAL Id: hal-04504414**

**<https://hal.univ-lille.fr/hal-04504414>**

Submitted on 14 Mar 2024

**HAL** is a multi-disciplinary open access archive for the deposit and dissemination of scientific research documents, whether they are published or not. The documents may come from teaching and research institutions in France or abroad, or from public or private research centers.

L'archive ouverte pluridisciplinaire **HAL**, est destinée au dépôt et à la diffusion de documents scientifiques de niveau recherche, publiés ou non, émanant des établissements d'enseignement et de recherche français ou étrangers, des laboratoires publics ou privés.



Distributed under a Creative Commons Attribution - NonCommercial - NoDerivatives 4.0 International License

## Article

## Open Access

# Haploidentical Versus Matched Sibling Donor Hematopoietic Stem Cell Transplantation for Adult Patients With Relapsed/Refractory Acute Lymphoblastic Leukemia: A Study From the Acute Leukemia Working Party of the European Society for Blood and Marrow Transplantation

Arnon Nagler<sup>1</sup>, Myriam Labopin<sup>2,3</sup>, Ryszard Swoboda<sup>4</sup>, Pietro Pioltelli<sup>5</sup>, Mutlu Arat<sup>6</sup>, Ibrahim Yakoub-Agha<sup>7</sup>, Alexander Kulagin<sup>8</sup>, Anna Maria Raiola<sup>9</sup>, Hakan Ozdogu<sup>10</sup>, Antonio Risitano<sup>11</sup>, Zubeyde Nur Ozkurt<sup>12</sup>, Jaime Sanz<sup>13</sup>, Eolia Brissot<sup>14</sup>, Peric Zina<sup>15</sup>, Sebastian Giebel<sup>4</sup>, Fabio Ciceri<sup>16</sup>, Mohamad Mohty<sup>17</sup>

**Correspondence:** Arnon Nagler (arnon.nagler@sheba.health.gov.il).

## ABSTRACT

The results of haploidentical stem cell transplantation (haploHCT) for patients with acute lymphoblastic leukemia (ALL) transplanted in active disease remain largely unknown. We retrospectively analyzed adult patients with R/R ALL who underwent haploHCT or matched sibling donor (MSD-HCT) as a first transplantation between 2012 and 2020. The analysis comprised 274 patients, 94 had a haploHCT, and 180 had an MSD-HCT. The median follow-up was 32 months. The median age was 33 (range 18–76) and 37 (18–76) years in the haplo- and MSD-HCT groups, respectively. Post-transplant cyclophosphamide (PTCy) was used in 88% of haploHCT and in 4% of the MSD-HCT group. Graft-versus-host disease grade III–IV was higher in haploHCT than in the MSD-HCT group (18% versus 9%;  $P = 0.042$ ). The 2-year chronic (c) graft-versus-host disease rates were 17% versus 33% (hazard ratio [HR] = 0.56;  $P = 0.14$ ), respectively. By multivariate analysis, relapse incidence, and leukemia-free survival were not significantly different between the transplant groups, while nonrelapse mortality (NRM) was significantly higher (25% versus 18% at 2 years; HR = 2.03;  $P = 0.042$ ) and overall survival (OS) lower (22% versus 38% at 2 years; HR = 1.72;  $P = 0.009$ ) in the haploHCT group compared with the MSD-HCT group. We conclude that the 2-year OS of R/R ALL patients undergoing MSD transplants is significantly better than in haploHCT with a higher NRM in the latter.

## INTRODUCTION

Allogeneic hematopoietic cell transplantation (alloHCT) is a standard of care for adult patients with acute lymphoblastic

leukemia (ALL) in first or subsequent complete remission (CR).<sup>1,2</sup> Results of alloHCT for ALL in CR1 improved over time in relation to nonrelapse mortality (NRM), relapse incidence

<sup>1</sup>Division of Hematology, Sheba Medical Center, Tel Hashomer, Israel

<sup>2</sup>ALWP of the EBMT Paris Office, France

<sup>3</sup>Department of Haematology, Saint Antoine Hospital, Sorbonne University, INSERM UMR 938, Paris, France

<sup>4</sup>Department of Bone Marrow Transplantation and Onco-Hematology, Maria Sklodowska-Curie National Research Institute of Oncology, Gliwice Branch, Gliwice, Poland

<sup>5</sup>Ospedale San Gerardo, Clinica Ematologica dell'Università Milano-Bicocca, Monza, Italy

<sup>6</sup>Hematopoietic SCT Unit, Demiroglu Bilim University Istanbul Florence Nightingale Hospital, Istanbul, Turkey

<sup>7</sup>CHU de Lille LIRIC, INSERM U995, Université de Lille, Lille, France

<sup>8</sup>RM Gorbacheva Research Institute, Pavlov University, St Petersburg, Russia

<sup>9</sup>Ematologia e Terapie Cellulari, IRCCS Ospedale Policlinico, San Martino, Genova, Italy

<sup>10</sup>Haematology Division, BMT Unit, Baskent University Hospital, Hematology Research Laboratory, Training & Medical, Adana, Turkey

<sup>11</sup>A.O.R.N. 'SAN.G MOSCATI', Ematologia, Avellino, Italy

<sup>12</sup>Gazi University Faculty of Medicine, Hematology, Ankara, Turkey

<sup>13</sup>Hospital Universitari i Politècnic La Fe, Valencia, Spain

<sup>14</sup>Service d'Hématologie Clinique et Thérapie Cellulaire, Hôpital Saint-Antoine, Sorbonne Université, INSERM UMRs 938, Paris, France

<sup>15</sup>School of Medicine, University Hospital Centre Zagreb, University of Zagreb, Croatia

<sup>16</sup>Ospedale San Raffaele s.r.l. Hematology and BMT, Milano, Italy

<sup>17</sup>Department of Hematology, Hospital Saint Antoine, EBMT Paris Study Office/CREST-TC, Saint Antoine Hospital, Paris, France  
Data presented in part at the ASH 2021 Hybrid Congress (publication number 1841).

The scientific boards of the ALWP of the EBMT approved this study.

AN, ML and MM have full access to all study data (available upon data-specific request).

Supplemental digital content is available for this article.

Copyright © 2022 the Author(s). Published by Wolters Kluwer Health, Inc. on behalf of the European Hematology Association. This is an open-access article distributed under the terms of the Creative Commons Attribution-Non Commercial-No Derivatives License 4.0 (CCBY-NC-ND), where it is permissible to download and share the work provided it is properly cited. The work cannot be changed in any way or used commercially without permission from the journal.

HemaSphere (2022) 6:11(e790).

<http://dx.doi.org/10.1097/HS9.0000000000000790>.

Received: July 25, 2022 / Accepted: September 5, 2022

(RI), and overall survival (OS).<sup>3</sup> The outcomes for patients with primary refractory and relapsed disease are significantly inferior; however, in this population, alloHCT may be the only curative option with up to a 20% chance of long-lasting remissions.<sup>4-6</sup>

Human leukocyte antigen (HLA) matched sibling donors (MSD) are considered optimal; however, their availability is restricted to about 25%–30% of individuals. A chance to identify a HLA-matched unrelated donor (MUD) varies with racial and ethnic background and ranges from 16% to 75%.<sup>7</sup> For patients lacking HLA-matched donors, transplantations from haploidentical ones (haploHCT), available for a vast majority of patients, have become a widely accepted alternative.<sup>8</sup> Several studies showed similar efficacy of haploHCT in comparison with MSD-HCT or MUD-HCT for ALL patients in CR.<sup>9-12</sup> Moreover, according to results of a prospective study from China including patients in CR with detectable measurable residual disease (MRD), haploHCT was associated with reduced RI as well as improved leukemia-free survival (LFS) and OS compared to MSD-HCT.<sup>13</sup> The authors postulated a stronger graft-versus-leukemia (GVL) effect after haploHCT, related to HLA disparity. In that study antigrft-versus-host disease (GVHD) prophylaxis was based on the use of high doses of antithymocyte globulin (ATG).<sup>13</sup>

Nowadays, the use of post-transplantation cyclophosphamide (PTCy) has become the most common strategy for GVHD prophylaxis in non-T-cell depleted haploHCT.<sup>14-17</sup> In a recent registry-based study comparing PTCy to ATG as a backbone of immunosuppression for ALL patients undergoing unmanipulated haploHCT in CR, PTCy has been shown superior to ATG with reduced RI and improved LFS and OS while no effect on the incidence of either acute(a) or chronic(c) GVHD.<sup>18</sup> So far, studies comparing MSD-HCT and haploHCT in a setting of ALL were focused on patients in CR.<sup>9-13</sup> However, it may be assumed that for transplantations performed in active disease, the role of potential GVL reaction associated with HLA disparity is particularly important. Therefore, the aim of this study was to compare outcomes of non-T-cell depleted haploHCT and MSD-HCT in patients with relapsed/refractory (R/R) ALL.

## SUBJECTS AND METHODS

### Study design and data collection

This was a retrospective, multicenter analysis based on the registry of the Acute Leukemia Working Party (ALWP) of the European Society for Blood and Marrow Transplantation (EBMT). The EBMT is a nonprofit, scientific society representing more than 600 transplant centers, mainly located in Europe, which are required to report all consecutive stem cell transplantations and follow-ups once a year. Data are entered, managed, and maintained in a central database. EBMT centers commit to obtaining informed consent according to the local regulations applicable at the time of transplantation and report pseudonymized data to the EBMT. The validation and quality control program includes verification of the computer print-out of the entered data, cross-checking with the national registries, and on-site visits to selected teams. The study was approved by the ALWP of the EBMT and conducted in accordance with the Declaration of Helsinki and Good Clinical Practice guidelines.

### Criteria for selection

The study included adult patients aged  $\geq 18$  years old with primary R/R ALL who underwent their first alloHCT between 2012 and 2020 from either non-T-cell depleted haploidentical donor or MSD with peripheral blood or bone marrow as a source of stem cells and following myeloablative (MAC) or reduced-intensity conditioning (RIC). The use of cord blood as a source of stem cells as well as transplantations with *ex vivo* T-cell depletion were exclusion criteria.

### Statistical analysis

LFS was the primary study endpoint. Secondary endpoints were the incidence of engraftment, OS, RI, NRM, the incidence of aGVHD and cGVHD, and GVHD- and relapse-free survival (GRFS).<sup>19</sup> All patients who met the inclusion criteria were divided into 2 groups according to donor type. Patients who underwent transplantation from a haploidentical donor were compared with those transplanted from an MSD. Patients' characteristics were compared using the Mann-Whitney test for continuous variables, and the chi-squared or Fisher's exact test for categorical variables.<sup>20</sup> The probabilities of OS, LFS, and GRFS were calculated using the Kaplan-Meier method. The probabilities of RI, NRM, and acute and cGVHD were estimated using cumulative incidence curves.<sup>21</sup> Univariate comparisons were performed with the log-rank test for LFS, OS, and GRFS, and Gray's test was used to compare cumulative incidence functions.<sup>22</sup> Multivariate analysis was performed using a Cox proportional-hazards model which included variables differing significantly between the groups, factors known to be associated with outcomes, plus a center frailty effect to take account of the heterogeneity across centers. Results were expressed as the hazard ratio (HR) with a 95% confidence interval (95% CI). All tests were 2-sided with a type 1 error rate fixed at 0.05. Statistical analyses were performed with SPSS 27.0 (IBM Corp., Armonk, NY, USA) and R 4.1.1 (R Core Team [2021]; R: A Language and Environment for Statistical Computing, R Foundation for Statistical Computing, Vienna, Austria, URL <https://www.R-project.org/>).

## RESULTS

### Patients and transplantation procedure

Out of 274 patients who met inclusion criteria, 94 (34.3%) patients were treated with haploHCT and 180 (65.7%) patients

**Table 1.**  
Patient Characteristics

	HaploHCT (n = 94)	MSD-HCT (n = 180)	P
Median age, y (min–max)	32.7 (18.1–76.1)	37.4 (18.5–75.6)	0.24
Patient sex			
Male	58 (62.4%)	119 (66.5%)	0.5
Female	35 (37.6%)	60 (33.5%)	
Missing	1	1	
Diagnosis			
Ph (–) B-ALL	21 (22.3%)	49 (27.2%)	0.52
Ph (+) B-ALL	23 (24.5%)	35 (19.4%)	
T-ALL	50 (53.2%)	96 (53.3%)	
Disease status at HCT			
Refractory	30 (31.9%)	99 (55%)	<0.0001
Relapse 1	33 (35.1%)	61 (33.9%)	
Relapse $\geq 2$	31 (33%)	20 (11.1%)	
KPS			
<90	35 (40.2%)	61 (35.3%)	0.43
$\geq 90$	52 (59.8%)	112 (64.7%)	
Missing	7	7	
Patient CMV serological status			
Negative	15 (16.1%)	46 (26.6%)	0.053
Positive	78 (83.9%)	127 (73.4%)	
Missing	1	7	
HCT-CI			
0	38 (66.7%)	73 (57.5%)	0.45
1 or 2	9 (15.8%)	29 (22.8%)	
$\geq 3$	10 (17.5%)	25 (19.7%)	
Missing	37	53	

(–) = negative; (+) = positive; B-ALL = B-acute lymphoblastic leukemia; CMV = cytomegalovirus; Haplo = haploidentical; HCT = hematopoietic cell transplantation; HCT-CI = hematopoietic cell transplantation-specific comorbidity index; KPS = Karnofsky performance status; MSD = matched sibling donor; Ph = Philadelphia; T-ALL = T-acute lymphoblastic leukemia.

**Table 2.**  
Transplant Characteristics

	HaploHCT (n = 94)	MSD-HCT (n = 180)	P
Median year of transplantation (min–max)	2015.5 (2012–2020)	2016 (2012–2020)	0.65
Donor/patient sex			0.57
no F->M	68 (73.1%)	125 (69.8%)	
F->M	25 (26.9%)	54 (30.2%)	
Missing	1	1	
Type of conditioning			0.001
MAC	63 (67%)	151 (83.9%)	
RIC	31 (33%)	29 (16.1%)	
Conditioning regimen			<0.0001
BuCy ± other	3 (3.2%)	18 (10%)	
BuFlu ± other	52 (55.3%)	25 (13.9%)	
FluMel ± other	4 (4.3%)	6 (3.3%)	
TBI	30 (31.9%)	123 (68.3%)	
Other	5 (5.3%)	8 (4.4%)	
Cell source			<0.0001
BM	41 (43.6%)	17 (9.4%)	
PB	53 (56.4%)	163 (90.6%)	
GVHD prevention			
CsA	1 (1.1%)	14 (7.8%)	
CsA + MTX	3 (3.2%)	126 (70.4%)	
MTX + Tacro	0 (0%)	2 (1.1%)	
CsA + MMF	53 (56.4%)	21 (11.7%)	
CsA + Tacro	0 (0%)	2 (1.1%)	
CsA + MTX + MMF	5 (5.3%)	2 (1.1%)	
MMF + Tacro	20 (21.3%)	3 (1.7%)	
MMF + Siro	7 (7.4%)	0 (0%)	
Tacro + Siro	2 (2.1%)	2 (1.1%)	
Other	3 (3.2%)	7 (3.9%)	
missing	0	1	
PTCy			<0.0001
no	11 (11.7%)	1732 (96.1%)	
yes	83 (88.3%)	7 (3.9%)	
In vivo T-cell depletion			0.77
no <i>in vivo</i> TCD	71 (75.5%)	138 (77.1%)	
<i>in vivo</i> TCD	23 (24.5%)	41 (22.9%)	
missing	0	1	

BM = bone marrow; Bu = busulfan; CsA = cyclosporine; Cy = cyclophosphamide; F = female; Flu = fludarabine; Haplo = haploidentical; HCT = hematopoietic cell transplantation; M = male; MAC = myeloablative conditioning; Mel = melphalan; MMF = mycophenolate mofetil; MSD = matched sibling donor; MTX = methotrexate; PB = peripheral blood; PTCy = post-transplant cyclophosphamide; RIC = reduced-intensity conditioning; Siro = sirolimus; Tacro = tacrolimus; TBI = total body irradiation; TCD = T-cell depletion.

underwent MSD-HCT. Median age was 32.7 (range 18.1–76.1) and 37.4 (18.5–75.6) years in haploHCT and MSD-HCT, respectively ( $P = 0.24$ ). Baseline patients' characteristics, such as sex, Karnofsky performance status score (KPS), and subtype of ALL (Philadelphia [Ph] positive B-/Ph negative B-/T-ALL) did not differ between the studied groups. The percentage of patients with primary refractory disease was lower in haploHCT than in the MSD-HCT group (31.9% versus 55.0%), while more haploHCT patients were in second or subsequent relapse (33% versus 11.1%,  $P < 0.0001$ ). The patient characteristics are shown in Table 1. Fewer patients undergoing haploHCT compared with MSD-HCT received MAC (67% versus 83.9%,  $P = 0.001$ ) and regimens based on total body irradiation (TBI) (31.9% versus 68.3%,  $P < 0.0001$ ). PTCy was used in 88.3% of the haploHCT, while only in 3.9% of the MSD-HCT, respectively. The use of ATG was similar in both groups. The most frequent drugs used as a GVHD prophylaxis were cyclosporine (CsA) combined with mycophenolate mofetil (MMF) in the haploHCT group while CsA combined with methotrexate (MTX) in the MSD-HCT setting. The detailed transplant characteristics are shown in Table 2.

**Table 3.**  
Transplant Outcomes

	HaploHCT (n = 94)	MSD-HCT (n = 180)	P
RI	56.6% [45–66.6]	51.5% [43.2–59.2]	0.53
NRM	25.4% [16.7–35.1]	17.7% [12.2–23.9]	0.13
LFS	18% [10.4–27.2]	30.8% [23.5–38.4]	0.023
OS	21.6% [13.2–31.4]	37.9% [29.8–46]	0.001
GRFS	15.7% [8.7–24.6]	19.4% [13.3–26.4]	0.06
aGVHD grade II–IV	27.9% [18.6–37.9]	21.4% [15.4–28.1]	0.25
aGVHD grade III–IV	17.8% [10.5–26.7]	9% [5.3–14]	0.042
cGVHD	17.2% [9.6–26.6]	32.5% [25.1–40.2]	0.012
Extensive cGVHD	5% [1.6–11.4]	16.9% [11.2–23.5]	0.011

aGVHD = acute graft-versus-host disease; cGVHD = chronic graft-versus-host disease; GRFS = GVHD-free and relapse-free survival; Haplo = haploidentical; HCT = hematopoietic cell transplantation; LFS = leukemia-free survival; MSD = matched sibling donor; NRM = nonrelapse mortality; OS = overall survival; RI = relapse incidence.

### Engraftment, response, and GVHD

Engraftment rate was lower in the haploHCT compared to the MSD-HCT group (86.5% versus 96%, respectively,  $P = 0.005$ ). CR rate after transplantation was 64.4% in the haploHCT group and 69.3% in the MSD-HCT group ( $P = 0.3$ ). By univariate analysis, the incidence of aGVHD grade II–IV at day 180 did not differ between haploHCT and MSD-HCT (27.9% versus 21.4%, respectively,  $P = 0.25$ ), while aGVHD grade III–IV was higher in haploHCT than in MSD-HCT group (17.8% versus 9%, respectively,  $P = 0.042$ ). Conversely, the 2-year cGVHD and extensive cGVHD rates were 17.2% versus 32.5% ( $P = 0.012$ ) and 5% versus 16.9% ( $P = 0.011$ ), respectively.

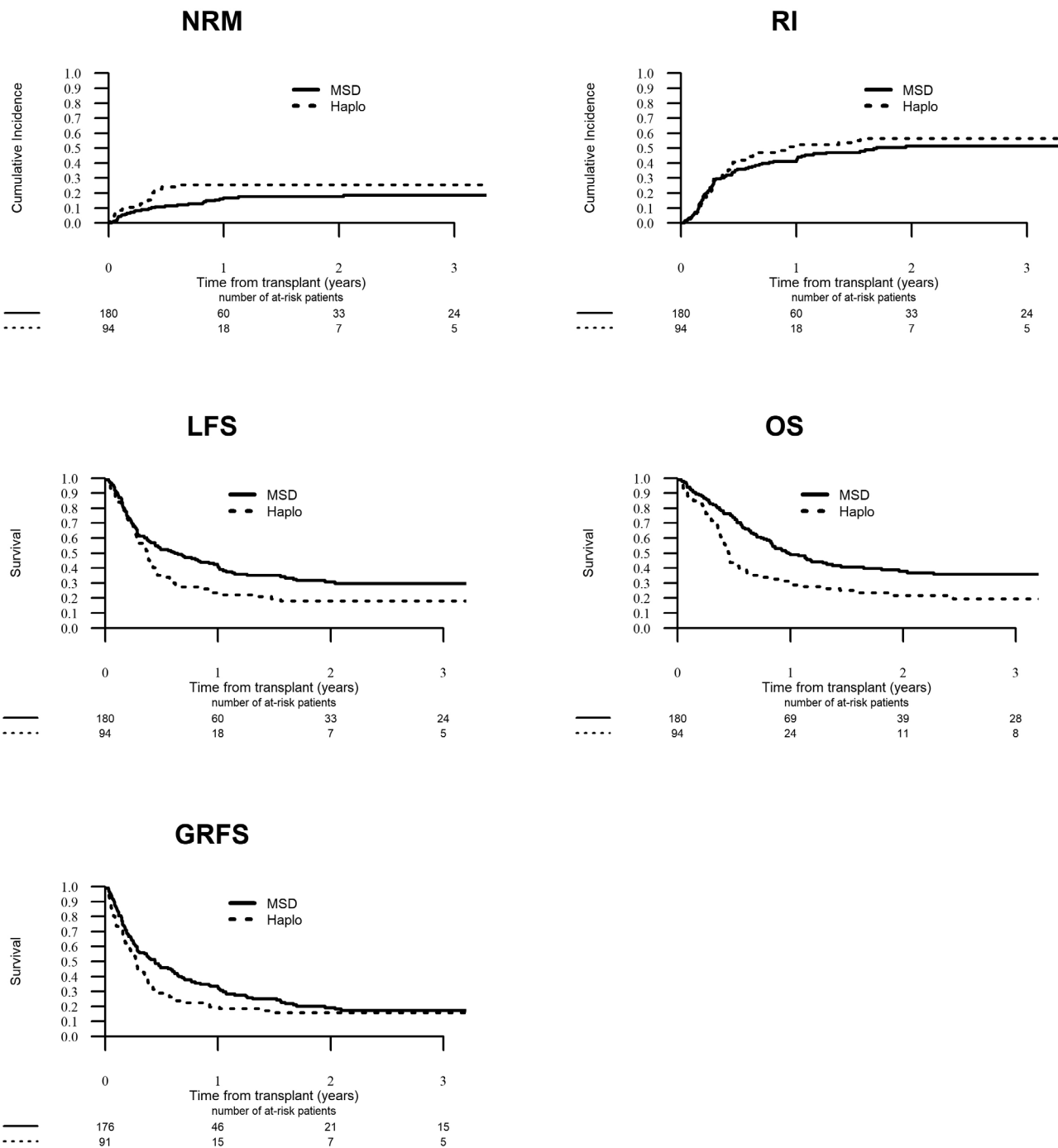
### Survival

The median follow-up was 32.1 months. One hundred sixty-eight and 100 of the R/R ALL patients that underwent haploHCT and MSD-HCT study patients died, respectively. The main causes of death after haploHCT and MSD-HCT were leukemia (63.9% versus 62.6%, respectively), infection (15.7% versus 18.2%), and GVHD (12.7% versus 11.1%) (Suppl. Table S1). At 2-year, RI was 56.6% versus 51.5% ( $P = 0.53$ ), NRM was 25.4% versus 17.7% ( $P = 0.13$ ); LFS was 18% versus 30.8% ( $P = 0.023$ ); OS 21.6% versus 37.9% ( $P = 0.001$ ) and GRFS 15.7% versus 19.4% ( $P = 0.06$ ) in the haploHCT group compared with the MSD-HCT group, respectively. The transplant outcomes are shown in Table 3 and Figure 1.

In the multivariate analysis, the risk of NRM was significantly higher in haploHCT in comparison with MSD-HCT (HR = 2.03; 95% CI: 1.03–4.02;  $P = 0.042$ ), which translated into significantly lower chance of OS (HR = 1.72; 95% CI: 1.15–2.58;  $P = 0.009$ ). No significant effect of the type of donor was observed in other transplant outcomes including RI, LFS, and GRFS, as well as the risk of aGVHD and cGVHD (Table 4). Among other prognostic factors, KPS  $\geq 90$  was associated with improved OS, LFS, and GRFS while the reduced risk of RI, NRM, aGVHD, and cGVHD. AlloHCT performed in second or subsequent relapse as compared to primary refractory ALL or first relapse were associated with increased risk of RI and decreased chance of OS, LFS, and GRFS (Table 4).

### DISCUSSION

In this study, we compared outcomes of haploHCT and MSD-HCT in patients with primary R/R ALL and showed the superiority of MSD-HCT over haploHCT in terms of NRM and OS. The incidence of aGVHD grade III–IV was higher in haploHCT, while the incidence of extensive cGVHD, was higher in MSD-HCT. To our knowledge, this is the first study comparing alloHCT from haploHCT and MSD-HCT in this setting.



**Figure 1. Transplantation outcome—NRM, RI, LFS, OS, and GRFS of allogeneic stem cell transplantation from Haplo donors and MSD in patients with relapsed/refractory acute lymphoblastic leukemia.** GRFS = GVHD-free, relapse-free survival; GVHD = graft-versus-host disease; Haplo = haploidentical; LFS = leukemia-free survival; MSD = matched sibling donors; NRM = nonrelapse mortality; OS = overall survival; RI = relapse incidence.

Despite improvements in first-line therapies for adults with ALL, still a majority of patients with high-risk disease experience relapse or primary refractoriness. The prognosis of adult patients with R/R ALL is dismal. According to PETHEMA (*Programa Español de Tratamiento en Hematología*) Group, the median OS for ALL patients after the first relapse is only 4.5 months with a 5-year OS rate of 10%.<sup>23</sup> Furthermore, the 1-year survival rate of ALL patients after second salvage chemotherapy is only 18%.<sup>24</sup> The results of alloHCT in patients with R/R acute leukemias are inferior compared to transplantations performed in CR; however, most studies in this area were focused on patients with acute myeloid leukemia, and only a few

analyses included patients with ALL. In the largest so far study by Duval et al, 582 patients undergoing alloHCT with R/R ALL were included with a 16% OS rate at 3 years.<sup>25</sup> In another study, Pavlů et al assessed alloHCT in primary refractory ALL. In that analysis, the probability of OS for the entire group was 36% at 2 years and 23% at 5 years.<sup>4</sup> The authors demonstrated the superiority of TBI over other conditioning regimens in relation to OS and LFS. They also showed the benefit of a female donor to male recipient combination in terms of LFS.<sup>4</sup>

The success of alloHCT depends on both the antileukemic effect of the conditioning regimen and the GVL reaction.<sup>26-28</sup> In patients with ALL, the relevance of GVL reaction is supported

**Table 4.**  
**Multivariate Analysis**

	Relapse		NRM		LFS		OS		GRFS		aGVHD II-IV		cGVHD	
	HR (95% CI)	P	HR (95% CI)	P	HR (95% CI)	P	HR (95% CI)	P	HR (95% CI)	P	HR (95% CI)	P	HR (95% CI)	P
HaploHCT vs MSD-HCT	0.97 (0.62–1.52)	0.89	2.03 (1.03–4.02)	0.042	1.22 (0.84–1.78)	0.3	1.72 (1.15–2.58)	0.009	1.31 (0.88–1.94)	0.18	1.85 (0.99–3.46)	0.054	0.56 (0.26–1.21)	0.14
Age (per 10 y)	1.03 (0.88–1.19)	0.74	1.05 (0.83–1.33)	0.69	1.04 (0.92–1.18)	0.51	1.09 (0.95–1.26)	0.2	0.92 (0.81–1.05)	0.23	0.91 (0.73–1.12)	0.36	0.99 (0.78–1.26)	0.93
ALL subtype														
Ph (-) B-ALL (reference)														
Ph (+) B-ALL	0.78 (0.44–1.39)	0.4	0.79 (0.34–1.84)	0.58	0.81 (0.5–1.3)	0.38	0.89 (0.52–1.52)	0.68	0.76 (0.46–1.25)	0.28	0.85 (0.38–1.89)	0.69	1.93 (0.77–4.8)	0.16
T-ALL	0.77 (0.48–1.25)	0.29	0.64 (0.31–1.35)	0.24	0.74 (0.49–1.12)	0.15	0.89 (0.56–1.41)	0.61	0.63 (0.42–0.97)	0.036	0.5 (0.27–0.93)	0.029	1.4 (0.64–3.09)	0.4
ALL status at transplantation														
Refractory (reference)														
First relapse	1.27 (0.82–1.97)	0.29	0.84 (0.43–1.65)	0.61	1.12 (0.77–1.63)	0.54	0.98 (0.65–1.48)	0.92	0.94 (0.64–1.37)	0.74	1.03 (0.56–1.86)	0.93	1.06 (0.53–2.11)	0.87
Second relapse	2.07 (1.23–3.47)	0.006	0.86 (0.36–2.03)	0.72	1.61 (1.03–2.51)	0.035	1.8 (1.11–2.91)	0.017	1.36 (0.85–2.17)	0.2	0.91 (0.42–1.97)	0.81	0.7 (0.24–2.04)	0.82
Female donor to male patient	0.86 (0.56–1.32)	0.48	0.93 (0.49–1.77)	0.84	0.88 (0.61–1.25)	0.47	0.95 (0.65–1.41)	0.81	0.8 (0.55–1.17)	0.25	1.42 (0.81–2.5)	0.22	1.48 (0.79–2.77)	0.22
KFS≥90	0.51 (0.34–0.76)	0.001	0.28 (0.15–0.51)	<0.0001	0.43 (0.31–0.6)	<0.0001	0.36 (0.25–0.51)	<0.0001	0.44 (0.31–0.61)	<0.0001	0.55 (0.32–0.96)	0.035	0.43 (0.22–0.83)	0.012
RIC vs MAC	0.98 (0.59–1.61)	0.93	0.71 (0.3–1.66)	0.43	0.89 (0.58–1.37)	0.59	0.71 (0.44–1.14)	0.16	1.02 (0.65–1.6)	0.95	0.69 (0.31–1.55)	0.37	0.64 (0.27–1.48)	0.29
TBI vs CT	0.71 (0.46–1.08)	0.11	1.05 (0.54–2.05)	0.89	0.79 (0.55–1.13)	0.2	0.84 (0.56–1.24)	0.37	0.85 (0.58–1.23)	0.38	1.15 (0.63–2.13)	0.65	0.84 (0.42–1.66)	0.62
PB vs BM	1.08 (0.65–1.79)	0.76	1.08 (0.5–2.34)	0.84	1.06 (0.7–1.62)	0.78	1.15 (0.72–1.83)	0.55	1.35 (0.86–2.11)	0.2	1.31 (0.63–2.71)	0.47	1.79 (0.77–4.17)	0.18

aGVHD = acute graft-versus-host disease; ALL = acute lymphoblastic leukemia; BM = bone marrow; cGVHD = chronic graft-versus-host disease; CT = chemotherapy; GRFS = GVHD-free and relapse-free survival; Haplo = haploidentical; HCT = hematopoietic cell transplantation; KFS = Karnofsky performance status; LFS = leukemia-free survival; MAC = myeloablative conditioning; MSD = matched sibling donor; NRM = nonrelapse mortality; OS = overall survival; PB = peripheral blood; Ph = Philadelphia; RIC = reduced-intensity conditioning; TBI = total body irradiation.

by a very strong association between the incidence of GVHD and relapse.<sup>28</sup> Both aGVHD and cGVHD are associated with a reduced risk of relapse.<sup>28</sup> The GVL effect may potentially be enhanced by donor/recipient HLA disparity. Fan et al reported data from 2 prospective trials including 335 patients with Ph-negative B-ALL treated with either MSD-HCT or haploHCT, mostly in CR.<sup>29</sup> The incidence of MRD persistence or relapse at 3 years was significantly reduced for those undergoing haploHCT (27% versus 43%;  $P = 0.003$ ). A similar comparison, restricted to patients with ALL in CR1 or CR2, was performed by our study group.<sup>10</sup> LFS and OS rates for 413 recipients of haploHCT and 1891 patients treated with MSD-HCT were similar, however, the risk of relapse was reduced for haploHCT (HR = 0.66;  $P = 0.004$ ) without significant effect on NRM, LFS, and OS. HaploHCT compared with MSD-HCT was associated with increased risk of both grade 2–4 and grade 3–4 aGVHD while the reduced risk of extensive cGVHD.<sup>10</sup> HaploHCT was also compared with either 10/10 MUD or unrelated donor with a single HLA disparity. In 2 registry-based analyses, the outcomes were comparable for all 3 donor types.<sup>11,30</sup> Kharfan-Dabaja et al compared haploHCT with MUD-HCT as a second alloHCT in patients with ALL achieving CR presecond transplant.<sup>31</sup> The authors did not show a significant difference in terms of OS and LFS between the 2 donor types.

Results of the above-cited studies suggest a stronger GVL effect after haploHCT compared with MSD-HCT, but not MUD-HCT. However, in this study, we could not confirm the benefit of haploHCT. The incidences of relapse after MSD-HCT and haploHCT were comparable, suggesting that the GVL effect driven by HLA incompatibility may be insufficient in the presence of a very high tumor burden at transplantation as in the case of R/R ALL. In this context, a reasonable strategy would be to attempt to reduce the tumor mass, and optimally achieve CR before transplantation. In the modern era, this goal may be reached by the use of monoclonal antibodies, either bispecific T-cell engager (blinatumomab) or immunotoxin (inotuzumab ozogamycin) for B-ALL, as well as a deoxyguanosine analog—nelarabine for T-ALL.<sup>32–34</sup>

Although the results of our study suggest that MSD should still be considered a preferable donor for patients with R/R ALL, it should be noted that unmanipulated haploHCT has been widely implemented in a relatively recent period and the results tend to improve over time. According to a recent retrospective study by our group focusing on adults with ALL, NRM and overall mortality decreased by more than 50% for haploHCT performed between 2016 and 2018 compared with the 2011–2015 period.<sup>35</sup> We also reported better results for haploHCT in ALL using PTCy compared to ATG as a backbone of immunosuppression.<sup>18</sup> Furthermore, the outcomes were better for bone marrow compared with peripheral blood as a source of stem cells, as a consequence of a significantly reduced risk of both aGVHD and cGVHD for bone marrow grafts.<sup>36</sup> Finally, the use of myeloablative conditioning based on TBI was associated with superior LFS compared with chemotherapy-based regimens.<sup>27</sup> It should be noted that in this study, among recipients of haploHCT, 11.7% of patients were treated with immunosuppressive protocols other than PTCy, 56.4% of patients received peripheral blood grafts, and only 31.9% of patients were treated with TBI. Still in agreement with previous publications in patients with acute leukemia and those with ALL patients in CR matched sibling is the best donor due to low incidence of NRM.<sup>10,38</sup>

Furthermore, results of MDS-HCT in ALL are improving as well, mainly due to a reduction in NRM most probably a consequence of improved supportive care as we and others have shown.<sup>3,37,38</sup> The recent progress in therapeutic availability of novel compounds for cGVHD with 3 compounds (ibrutinib, ruxolitinib, and belumosudil) approved by the US Food and Drug Administration (FDA) in the last 5 years and the

increasing use of PTCy for GVHD prophylaxis, holds potential for further improvements in outcomes of MSD-HCT in ALL.<sup>9,39</sup> Altogether, with optimization of the transplant procedure from both haploidentical and sibling donors, the role of haploHCT in R/R ALL may still be of value, which, however, requires re-evaluation in the future.

Until recently, alloHCT was considered the only curative approach for patients with R/R ALL. In the modern era of treatment, chimeric antigen receptor (CAR) T-cells appears an attractive alternative. The use of tisagenlecleucel in children and young adults with B-ALL is associated with an 82% response rate and 55% probability of OS at 5 years.<sup>40,41</sup> Response rate after the treatment with brexucaptogene autoleucel for adults with R/R ALL is 71% with 25 months median OS.<sup>42</sup> On the one hand, wide application of CAR T-cells may diminish the need for alloHCT, on the other, alloHCT may still be considered as consolidation after CAR T-cells in order to reduce the risk of relapse.

Our study has some important limitations related to its retrospective nature. In particular, detailed data regarding clinical characteristics (percentage of bone marrow blasts, presence of extramedullary lesions), details on molecular features of the disease, and data on pre- and post-transplant pharmacological interventions were lacking. These variables of potential prognostic value could not be included in the analysis. In addition, the MSD-HCT and haploHCT groups differed in several parameters including disease status, conditioning and graft sources that all were included in the Cox model. Nevertheless, we were able to demonstrate that approximately 20% of patients with R/R ALL may be rescued with haploHCT and that the proportion is even higher (above 35%) after MSD-HCT. In both cases, however, the incidence of disease progression exceeds 50% being the major cause of treatment failure. Further attempts should be focused on the optimal use of modern treatment options (monoclonal antibodies, CAR T-cells) as either pre- or post-transplant interventions aiming to achieve and maintain CR in the context of alloHCT.

## ACKNOWLEDGMENTS

We thank all the EBMT centers and national registries for contributing patients to this study (Suppl. Appendix – contributing centers). We also thank the data managers for their excellent work, and the patients who provided data.

## AUTHOR CONTRIBUTIONS

AN wrote the study synopsis and abstract, designed the study, interpreted the data, and edited the article. ML designed the study, performed the statistical analyses, interpreted the data, and edited the article. RS wrote the article. MM designed the study, interpreted the data, and edited the article. EB, PZ, SG, and FC interpreted the data and reviewed the article. PP, MA, IYA, AK, EA, HO, AR, ZNO, and JS reviewed the article and provided clinical data. All authors approved the final version of the article.

## DISCLOSURES

The authors declare that they have no relevant conflict of interest and no competing financial interests.

## REFERENCES

- DeFilipp Z, Advani AS, Bachanova V, et al. Hematopoietic cell transplantation in the treatment of adult acute lymphoblastic leukemia: updated 2019 evidence-based review from the American society for transplantation and cellular therapy. *Biol Blood Marrow Transplant.* 2019;25:2113–2123.
- Giebel S, Marks DI, Boissel N, et al. Hematopoietic stem cell transplantation for adults with Philadelphia chromosome-negative acute lymphoblastic leukemia in first remission: a position statement of the European Working Group for Adult Acute Lymphoblastic Leukemia (EWALL) and the Acute Leukemia Working Party of the European Society for Blood and Marrow Transplantation (EBMT). *Bone Marrow Transplant.* 2019;54:798–809.
- Giebel S, Labopin M, Socié G, et al. Improving results of allogeneic hematopoietic cell transplantation for adults with acute lymphoblastic leukemia in first complete remission: an analysis from the Acute Leukemia Working Party of the European Society for Blood and Marrow Transplantation. *Haematologica.* 2017;102:139–149.
- Pavlů J, Labopin M, Zoellner AK, et al. Allogeneic hematopoietic cell transplantation for primary refractory acute lymphoblastic leukemia: a report from the Acute Leukemia Working Party of the EBMT. *Cancer.* 2017;123:1965–1970.
- Nagler A, Labopin M, Dholaria B, et al. Second allogeneic stem cell transplantation in patients with acute lymphoblastic leukaemia: a study on behalf of the Acute Leukaemia Working Party of the European Society for Blood and Marrow Transplantation. *Br J Haematol.* 2019;186:767–776.
- Bazarbachi AH, Al Hamed R, Labopin M, et al. Allogeneic stem-cell transplantation with sequential conditioning in adult patients with refractory or relapsed acute lymphoblastic leukemia: a report from the EBMT Acute Leukemia Working Party. *Bone Marrow Transplant.* 2020;55:595–602.
- Grager L, Eapen M, Williams E, et al. HLA match likelihoods for hematopoietic stem-cell grafts in the U.S. registry. *N Engl J Med.* 2014;371:339–348.
- Passweg JR, Baldomero H, Bader P, et al. Use of haploidentical stem cell transplantation continues to increase: the 2015 European Society for Blood and Marrow Transplant activity survey report. *Bone Marrow Transplant.* 2017;52:811–817.
- Sanz J, Galimard JE, Labopin M, et al. Post-transplant cyclophosphamide containing regimens after matched sibling, matched unrelated and haploidentical donor transplants in patients with acute lymphoblastic leukemia in first complete remission, a comparative study of the ALWP of the EBMT. *J Hematol Oncol.* 2021;14:84.
- Nagler A, Labopin M, Houhou M, et al. Outcome of haploidentical versus matched sibling donors in hematopoietic stem cell transplantation for adult patients with acute lymphoblastic leukemia: a study from the Acute Leukemia Working Party of the European Society for Blood and Marrow Transplantation. *J Hematol Oncol.* 2021;14:53.
- Shem-Tov N, Peczynski C, Labopin M, et al. Haploidentical vs. unrelated allogeneic stem cell transplantation for acute lymphoblastic leukemia in first complete remission: on behalf of the ALWP of the EBMT. *Leukemia.* 2020;34:283–292.
- Wieduwilt MJ, Metheny L, Zhang MJ, et al. Haploidentical vs sibling, unrelated, or cord blood hematopoietic cell transplantation for acute lymphoblastic leukemia. *Blood Adv.* 2022;6:339–357.
- Chang YJ, Wang Y, Xu LP, et al. Haploidentical donor is preferred over matched sibling donor for pre-transplantation MRD positive ALL: a phase 3 genetically randomized study. *J Hematol Oncol.* 2020;13:27.
- Luznik L, O'Donnell PV, Symons HJ, et al. HLA-haploidentical bone marrow transplantation for hematologic malignancies using nonmyeloablative conditioning and high-dose, posttransplantation cyclophosphamide. *Biol Blood Marrow Transplant.* 2008;14:641–650.
- Raiola AM, Dominietto A, di Grazia C, et al. Unmanipulated haploidentical transplants compared with other alternative donors and matched sibling grafts. *Biol Blood Marrow Transplant.* 2014;20:1573–1579.
- Ciurea SO, Zhang MJ, Bacigalupo AA, et al. Haploidentical transplant with posttransplant cyclophosphamide vs matched unrelated donor transplant for acute myeloid leukemia. *Blood.* 2015;126:1033–1040.
- Duléry R, Ménard AL, Chantepie S, et al. Sequential conditioning with thiopeta in T cell-replete hematopoietic stem cell transplantation for the treatment of refractory hematologic malignancies: comparison with matched related, haplo-mismatched, and unrelated donors. *Biol Blood Marrow Transplant.* 2018;24:1013–1021.
- Nagler A, Kanate AS, Labopin M, et al. Post-transplant cyclophosphamide versus anti-thymocyte globulin for graft-versus-host disease prevention in haploidentical transplantation for adult acute lymphoblastic leukemia. *Haematologica.* 2021;106:1591–1598.
- Ruggeri A, Labopin M, Ciceri F, et al. Definition of GvHD-free, relapse-free survival for registry-based studies: an ALWP-EBMT analysis on patients with AML in remission. *Bone Marrow Transplant.* 2016;51:610–611.
- Kanate AS, Nagler A, Savani B. Summary of scientific and statistical methods, study endpoints and definitions for observational and registry-based studies in hematopoietic cell transplantation. *Clin Hematol Int.* 2020;2:2–4.

21. Gooley TA, Leisenring W, Crowley J, et al. Estimation of failure probabilities in the presence of competing risks: new representations of old estimators. *Stat Med.* 1999;18:695–706.
22. Fine JP, Gray RJ. A proportional hazards model for sub distribution of a competing risk. *J Am Stat Assoc.* 1999; 94:496–509.
23. Oriol A, Vives S, Hernández-Rivas JM, et al. Outcome after relapse of acute lymphoblastic leukemia in adult patients included in four consecutive risk-adapted trials by the PETHEMA Study Group. *Haematologica.* 2010;95:589–596.
24. O'Brien S, Thomas D, Ravandi F, et al. Outcome of adults with acute lymphocytic leukemia after second salvage therapy. *Cancer.* 2008;113:3186–3191.
25. Duval M, Klein JP, He W, et al. Hematopoietic stem-cell transplantation for acute leukemia in relapse or primary induction failure. *J Clin Oncol.* 2010;28:3730–3738.
26. Swoboda R, Labopin M, Giebel S, et al. Total body irradiation plus fludarabine versus thiotepea, busulfan plus fludarabine as a myeloablative conditioning for adults with acute lymphoblastic leukemia treated with haploidentical hematopoietic cell transplantation. A study by the Acute Leukemia Working Party of the EBMT. *Bone Marrow Transplant.* 2022;57:399–406.
27. Dholaria B, Labopin M, Angelucci E, et al. Improved outcomes of haploidentical hematopoietic cell transplantation with total body irradiation-based myeloablative conditioning in acute lymphoblastic leukemia. *Transplant Cell Ther.* 2021;27:171.e1–171.e8.
28. Yeshurun M, Weisdorf D, Rowe JM, et al. The impact of the graft-versus-leukemia effect on survival in acute lymphoblastic leukemia. *Blood Adv.* 2019;3:670–680.
29. Fan M, Wang Y, Lin R, et al. Haploidentical transplantation has a superior graft-versus-leukemia effect than HLA-matched sibling transplantation for Ph- high-risk B-cell acute lymphoblastic leukemia. *Chin Med J (Engl).* 2022;135:930–939.
30. Al Malki MM, Yang D, Labopin M, et al. Comparing transplant outcomes in ALL patients after haploidentical with PTCy or matched unrelated donor transplantation. *Blood Adv.* 2020;4:2073–2083.
31. Kharfan-Dabaja MA, Labopin M, Bazarbachi A, et al. Comparing outcomes of a second allogeneic hematopoietic cell transplant using HLA-matched unrelated versus T-cell replete haploidentical donors in relapsed acute lymphoblastic leukemia: a study of the Acute Leukemia Working Party of EBMT. *Bone Marrow Transplant.* 2021;56:2194–2202.
32. Kantarjian HM, DeAngelo DJ, Stelljes M, et al. Inotuzumab ozogamicin versus standard of care in relapsed or refractory acute lymphoblastic leukemia: Final report and long-term survival follow-up from the randomized, phase 3 INO-VATE study. *Cancer.* 2019;125:2474–2487.
33. Kantarjian H, Stein A, Gökbuğut N, et al. Blinatumomab versus chemotherapy for advanced acute lymphoblastic leukemia. *N Engl J Med.* 2017;376:836–847.
34. Candoni A, Lazzarotto D, Ferrara F, et al. Nelarabine as salvage therapy and bridge to allogeneic stem cell transplant in 118 adult patients with relapsed/refractory T-cell acute lymphoblastic leukemia/lymphoma. A CAMPUS ALL study. *Am J Hematol.* 2020;95:1466–1472.
35. Nagler A, Labopin M, Koc Y, et al. Outcome of T-cell-replete haploidentical stem cell transplantation improves with time in adults with acute lymphoblastic leukemia: a study from the acute leukemia working party of the European society for blood and marrow transplantation. *Cancer.* 2021;127:2507–2514.
36. Nagler A, Dholaria B, Labopin M, et al. Bone marrow versus mobilized peripheral blood stem cell graft in T-cell-replete haploidentical transplantation in acute lymphoblastic leukemia. *Leukemia.* 2020;34:2766–2775.
37. Saadeh SS, Litzow MR. Hematopoietic stem cell transplant in adults with acute lymphoblastic leukemia: the present state. *Expert Rev Hematol.* 2018;11:195–207.
38. Shouval R, Fein JA, Labopin M, et al. Outcomes of allogeneic haematopoietic stem cell transplantation from HLA-matched and alternative donors: a European Society for Blood and Marrow Transplantation registry retrospective analysis. *Lancet Haematol.* 2019;6:e573–e584.
39. Martini DJ, Chen YB, DeFilipp Z. Recent FDA approvals in the treatment of graft-versus-host disease. *Oncologist.* 2022;27:685–693.
40. Maude SL, Laetsch TW, Buechner J, et al. Tisagenlecleucel in children and young adults with B-Cell lymphoblastic leukemia. *N Engl J Med.* 2018;378:439–448.
41. Rives S, Maude SL, Hiramatsu H, et al. Tisagenlecleucel in pediatric and young adult patients (pts) with relapsed/refractory (R/R) B-cell acute lymphoblastic leukemia (B-ALL): final analyses from the ELIANA study. *HemaSphere.* 2022;6:13–14.
42. Shah BD, Ghobadi A, Oluwole OO, et al. KTE-X19 for relapsed or refractory adult B-cell acute lymphoblastic leukaemia: phase 2 results of the single-arm, open-label, multicentre ZUMA-3 study. *Lancet.* 2021;398:491–502.