



HAL
open science

The impact of pre-transplantation diabetes and obesity on acute graft-versus-host disease, relapse and death after allogeneic hematopoietic cell transplantation: a study from the EBMT Transplant Complications Working Party.

Lars Kligen Gjørde, Tapani Ruutu, Christophe Peczynski, William Boreland, Nicolaus Kröger, Didier Blaise, Thomas Schroeder, Régis Peffault de Latour, Tobias Gedde-Dahl, Aleksandr Kulagin, et al.

► To cite this version:

Lars Kligen Gjørde, Tapani Ruutu, Christophe Peczynski, William Boreland, Nicolaus Kröger, et al.. The impact of pre-transplantation diabetes and obesity on acute graft-versus-host disease, relapse and death after allogeneic hematopoietic cell transplantation: a study from the EBMT Transplant Complications Working Party.. Bone Marrow Transplantation, 2023, Bone Marrow Transplantation, 10.1038/s41409-023-02154-6 . hal-04515174

HAL Id: hal-04515174

<https://hal.univ-lille.fr/hal-04515174>

Submitted on 21 Mar 2024

HAL is a multi-disciplinary open access archive for the deposit and dissemination of scientific research documents, whether they are published or not. The documents may come from teaching and research institutions in France or abroad, or from public or private research centers.

L'archive ouverte pluridisciplinaire **HAL**, est destinée au dépôt et à la diffusion de documents scientifiques de niveau recherche, publiés ou non, émanant des établissements d'enseignement et de recherche français ou étrangers, des laboratoires publics ou privés.



Distributed under a Creative Commons Attribution 4.0 International License

ARTICLE OPEN



The impact of pre-transplantation diabetes and obesity on acute graft-versus-host disease, relapse and death after allogeneic hematopoietic cell transplantation: a study from the EBMT Transplant Complications Working Party

Lars Klingen Gjørde¹✉, Tapani Ruutu², Christophe Peczynski³, William Boreland³, Nicolaus Kröger⁴, Didier Blaise⁵, Thomas Schroeder⁶, Régis Peffault de Latour⁷, Tobias Gedde-Dahl⁸, Aleksandr Kulagin⁹, Henrik Sengeløv¹, Ibrahim Yakoub-Agha¹⁰, Jürgen Finke¹¹, Matthias Eder¹², Grzegorz Basak¹³, Ivan Moiseev⁹, Hélène Schoemans¹⁴, Christian Koenecke¹², Olaf Penack¹⁵ and Zinaida Perić^{16,17}

© The Author(s) 2023

Obesity and diabetes can modulate immune responses, which may impact allogeneic HCT outcomes and GvHD. From the EBMT registry, we included 36,539 adult patients who underwent allogeneic HCT for a hematological malignancy between 2016 and 2020. Of these, 5228 (14%) had obesity (BMI ≥ 30 kg/m²), 1415 (4%) had diabetes (requiring treatment with insulin or oral hypoglycemics), and 688 (2%) had obesity + diabetes pre-transplantation. Compared with patients without diabetes or obesity, the hazard ratio (HR) of grade II–IV acute GvHD was 1.00 (95% confidence interval [CI] 0.94–1.06, $p = 0.89$) for patients with obesity, 0.95 (CI 0.85–1.07, $p = 0.43$) for patients with diabetes, and 0.96 (CI 0.82–1.13, $p = 0.63$) for patients with obesity + diabetes. Non-relapse mortality was higher in patients with obesity (HR 1.08, CI 1.00–1.17, $p = 0.047$), diabetes (HR 1.40, CI 1.24–1.57, $p < 0.001$), and obesity + diabetes (HR 1.38, CI 1.16–1.64, $p < 0.001$). Overall survival after grade II–IV acute GvHD was lower in patients with diabetes (HR 1.46, CI 1.25–1.70, $p < 0.001$). Pre-transplantation diabetes and obesity did not influence the risk of developing acute GvHD, but pre-transplantation diabetes was associated with poorer survival after acute GvHD.

Bone Marrow Transplantation (2024) 59:255–263; <https://doi.org/10.1038/s41409-023-02154-6>

INTRODUCTION

Obesity and diabetes can induce metabolic changes that modulate immune responses and promote a chronic low-grade inflammatory state [1, 2]. In the context of allogeneic hematopoietic cell transplantation (HCT), pre-clinical studies have found that obese mice develop more severe acute graft-versus-host disease (GvHD) after allogeneic HCT, possibly due to an increased pro-inflammatory cytokine production and a dysregulation of the gut microbiome [3, 4]. Likewise, post-transplant hyperglycemia and new-onset post-transplantation diabetes have been shown to increase the risk of acute GvHD [5–7], possibly due to an exaggeration of the inflammatory response and a dysregulation of immunological signaling and endothelial function [8–11].

In observational studies of patients undergoing allogeneic HCT, associations between obesity and pre-transplantation diabetes and acute GvHD have been less clear. Regarding obesity, a Japanese registry study of 3827 adult patients found an increased

risk of developing grade II–IV acute GvHD when having a pre-transplant body-mass index (BMI) ≥ 30 kg/m² compared with having a BMI between 18 and 25 kg/m², but this did not remain statistically significant in multivariable analysis [12]. Other registry studies have not found support for an association between BMI and acute GvHD [13–16]. Likewise, studies of pediatric transplant cohorts have been conflicting [17–20]. A more consistent association, however, has been shown between obesity and non-relapse mortality (NRM) in general [13, 14, 21–27].

Regarding pre-transplantation diabetes, two larger studies from Japan and the US, which included 378 and 134 patients, respectively, with pre-transplantation diabetes did not find support for a difference in the risk of acute GvHD when compared with patients without pre-transplantation diabetes [28, 29]. The Japanese study did however find a higher cumulative incidence of GvHD-related mortality at 1-year in patients with pre-transplantation diabetes (3.6% vs. 2.0%, $p = 0.05$). Still, all patients

¹Department of Hematology, Rigshospitalet, Copenhagen University Hospital, Copenhagen, Denmark. ²Clinical Research Institute, Helsinki University Hospital, Helsinki, Finland. ³EBMT Paris Study Office, Paris, France. ⁴University Medical Center Hamburg, Hamburg, Germany. ⁵Institut Paoli Calmettes, Marseille, France. ⁶University Hospital, Essen, Germany. ⁷Hopital St. Louis, Paris, France. ⁸Oslo University Hospital, Rikshospitalet, Oslo, Norway. ⁹First State Pavlov Medical University of St. Petersburg, St. Petersburg, Russia. ¹⁰Université de Lille, Lille, France. ¹¹University of Freiburg, Freiburg, Germany. ¹²Hannover Medical School, Hannover, Germany. ¹³University Clinical Center of the Medical University of Warsaw, Warsaw, Poland. ¹⁴KU Leuven-University of Leuven, Leuven, Belgium. ¹⁵Charité-Universitätsmedizin Berlin, Berlin, Germany. ¹⁶University of Zagreb, Zagreb, Croatia. ¹⁷University Hospital Centre Zagreb, Zagreb, Croatia. ✉email: lars.klingen.gjaerde@regionh.dk

Received: 30 August 2023 Revised: 2 November 2023 Accepted: 13 November 2023
Published online: 7 December 2023

included in the two studies were transplanted before 2010; hence, only a relatively small proportion of patients underwent a reduced intensity/non-myeloablative transplant, which in later years has been increasingly used in older patients and in patients with significant comorbidities, including diabetes and obesity.

A recent study from the European Society for Blood and Marrow Transplantation (EBMT) found that in patients transplanted for a hematological malignancy from a matched sibling or unrelated donor between 2010 and 2018, 4.4% had pre-transplantation diabetes, defined as diabetes requiring treatment with insulin or oral hypoglycemics but not diet alone, and 3.9% had pre-transplant obesity, defined as having a BMI ≥ 35 kg/m² [23]. Given the low prevalence of pre-transplantation diabetes and obesity, a large registry study is required to yield conclusive estimates of the impact of obesity and diabetes on acute GvHD and acute GvHD-related mortality in recent years. This is needed to improve the prognostic information given to future patients undergoing allogeneic HCT with pre-existing diabetes or obesity, two patient groups that are likely to increase in numbers over the coming years [30, 31].

PATIENTS AND METHODS

Study design

We conducted a retrospective observational study using data from the EBMT registry. We included all adult (≥ 18 years of age) patients, who underwent their first (previous autologous transplantations were allowed) bone marrow or peripheral blood stem cell allogeneic transplantation for a hematological malignancy between 2016 and 2020, and who had complete information on acute GvHD status or grade and on height, weight, and diabetes comorbidity prior to transplant. Exclusion criteria included ex vivo T-cell depletion and donor types other than identical sibling, matched unrelated, mismatched unrelated or haploidentical donor. The study was planned and approved by the Transplant Complications Working Party of the EBMT. All patients gave written informed consent to use their personal data for research purposes. The study was conducted in accordance with the Declaration of Helsinki.

Patients with pre-transplantation obesity, diabetes, and obesity + diabetes, respectively, were compared with patients without pre-transplantation obesity and diabetes (control group). The primary objective was to compare the incidence of grade II–IV acute GvHD. The secondary objectives included comparing the incidence of chronic GvHD, overall survival (OS), relapse, NRM, and OS after grade II–IV acute GvHD between the groups of interest.

Definitions

In 2016, pre-existing comorbidities were added to the EBMT Minimum Essential Data (MED)-A form, a mandatory form to submit to the EBMT for all allogeneic HCTs in all EBMT centers. We defined cases of pre-transplantation diabetes using the MED-A form's Comorbidity Index item "Diabetes" (defined as "requiring treatment with insulin or oral hypoglycemics, but not diet alone"), and obesity as having a BMI ≥ 30 kg/m² calculated from the MED-A form's information on pre-transplantation weight and height. Acute GvHD was defined and graded based on the Keystone criteria [32]. Chronic GvHD was defined and classified as limited or extensive according to published criteria [33]. OS was defined as death from any cause, and NRM was defined as death without relapse.

Statistical analyses

Start time was the date of transplant for all endpoints, except for the secondary endpoint of OS after a diagnosis of grade II–IV acute GvHD. For this specific endpoint, start date was the date of the first occurrence of grade II–IV acute GvHD.

Probabilities of OS were calculated using the Kaplan–Meier estimator. Cumulative incidence functions were used to estimate NRM and relapse incidence in a competing risk setting, death and relapse competing with each other. For the estimation of the cumulative incidence of acute and chronic GvHD, relapse and death were considered to be competing events. For the analysis of OS after acute GvHD grade II–IV, we performed a landmark analysis (starting from the time of first occurrence) of all patients who experienced grade II–IV acute GvHD before day +180.

Hazard ratios (HR), together with the 95% confidence intervals (CI) and *p*-values were estimated using multivariable cause-specific Cox proportional hazards regression models, providing a cause-specific HR in the presence of competing risks. To adjust the HRs for the comparison between the groups of interest, the following covariates were included: previous autologous transplantation (yes vs. no), year of transplantation (continuous), cell source (bone marrow vs. peripheral blood), type of donor (identical sibling vs. matched unrelated donor vs. mismatched unrelated donor vs. haploidentical donor), Disease Risk Index (high-very high vs. low-intermediate), patient age (continuous), patient and donor sex (male vs. female), patient and donor CMV (negative vs. positive), Karnofsky score (≥ 90 vs. < 90), intensity of conditioning (RIC vs. MAC), TBI (yes vs. no), and use of ATG/Campath (yes vs. no). For the landmark analysis of OS after acute GvHD grade II–IV, grade of acute GvHD and time between transplantation and acute GvHD (logarithmic transformation of the continuous time) were also added to the covariate set. These variables were selected because of known clinical relevance, impact in univariable analysis and/or statistically significant imbalance between the groups of interest.

Differences were considered statistically significant in case of *p* < 0.05. Center effect was taken into account by introducing a random effect or 'frailty' into all models. Statistical analyses were performed using R version 4.1.2 (R Foundation for Statistical Computing, Vienna, Austria).

RESULTS

Patient characteristics and prevalence of pre-transplantation diabetes and obesity

A total of 36 539 patients were included, of which 5228 (14%) had obesity (without co-existing diabetes), 1415 (4%) had diabetes (without co-existing obesity), and 688 (2%) had obesity + diabetes prior to transplant. Table 1 shows the patient characteristics according to pre-transplantation diabetes and obesity. The majority of patients received a peripheral blood stem cell transplant (89.5% of the control group, 92.6% of patients with obesity, 92.2% of patients with diabetes, and 96.6% of patients with obesity + diabetes). The most common donor was a 10/10 HLA-matched unrelated donor (used in 40.4% of the control group, 40.9% of patients with obesity, 41.4% of patients with diabetes, and 44.9% of patients with obesity + diabetes), and the most common indication was acute myeloid leukemia (58.8% of the control group, 57.2% of patients with obesity, 55.6% of patients with diabetes, and 54.4% of patients with obesity + diabetes). Reduced intensity conditioning was used in 49.2% of the control group, 51.5% of patients with obesity, 61.4% of patients with diabetes, and 63.4% of patients with obesity + diabetes.

With regards to clinically relevant differences between the groups of interest, patients with diabetes and obesity + diabetes were older (median [inter-quartile range (IQR)] age 61.5 [55.1–66.4] years and 59.5 [53.8–64.2] years, respectively) than patients with obesity and the control group (median [IQR] age 53.8 [43.2–61.5] years and 54.3 [41.4–62.7] years, respectively), and they were more likely to be male (71.2% and 65.7% males in patients with diabetes and obesity + diabetes, respectively, versus 57.9% and 58.5% males in patients with obesity and the control group, respectively), and have a Karnofsky performance score < 90 (38.3% and 34.2% of patients with diabetes and obesity + diabetes, respectively, versus 26.6% and 27.7% of patients with obesity and the control group, respectively).

The median follow-up was 32.7 months in the control group, 31.0 months in patients with obesity, 32.6 months in patients with diabetes, and 31.9 months in patients with obesity + diabetes.

Acute GvHD

Figure 1 shows the cumulative incidence of grade II–IV acute GvHD according to pre-transplantation obesity and diabetes status. At day +100, the cumulative incidence of grade II–IV acute GvHD was 26.6% (CI: 25.4–27.9%) in patients with obesity, 25.7% (CI: 23.4–28.0%) in patients with diabetes, 25.8% (CI:

Table 1. Patient characteristics according to pre-transplantation diabetes and obesity.

Characteristic	Control group (N = 29,208)	Obesity (N = 5228)	Diabetes (N = 1415)	Obesity + Diabetes (N = 688)
Patient age in years, median (min-max) [IQR]	54.3 (18–82.5) [41.4–62.7]	53.8 (18–76.8) [43.2–61.5]	61.5 (18–83.8) [55.1–66.4]	59.5 (20.8–76.2) [53.8–64.2]
Patient sex, N (%)				
Male	17,062 (58.5%)	3027 (57.9%)	1007 (71.2%)	451 (65.7%)
Female	12118 (41.5%)	2198 (42.1%)	407 (28.8%)	235 (34.3%)
Missing	28	3	1	2
Karnofsky score, N (%)				
≥90	20,208 (72.3%)	3672 (73.4%)	825 (61.6%)	433 (65.8%)
<90	7752 (27.7%)	1331 (26.6%)	514 (38.4%)	225 (34.2%)
Missing	1248	225	76	30
HCT-Cl, N (%)				
0	16,769 (59.4%)	2243 (44.6%)	0 (0%)	0 (0%)
1–2	5310 (18.8%)	1700 (33.8%)	630 (51%)	298 (51.3%)
3+	6134 (21.7%)	1090 (21.7%)	605 (49%)	283 (48.7%)
Missing	995	195	180	107
Renal comorbidity (moderate/severe) ^a , N (%)				
Yes	319 (1.1%)	72 (1.4%)	45 (3.4%)	22 (3.5%)
No	28736 (98.9%)	5130 (98.6%)	1271 (96.6%)	608 (96.5%)
Missing	153	26	99	58
Cardiac comorbidity ^b , N (%)				
Yes	1531 (5.3%)	309 (5.9%)	217 (16.3%)	104 (16.3%)
No	27,548 (94.7%)	4896 (94.1%)	1117 (83.7%)	534 (83.7%)
Missing	129	23	81	50
Cerebrovascular disease ^c , N (%)				
Yes	458 (1.6%)	97 (1.9%)	56 (4.3%)	16 (2.6%)
No	28,639 (98.4%)	5102 (98.1%)	1255 (95.7%)	608 (97.4%)
Missing	111	29	104	64
Body mass index in kg/m ² , median (min-max) [IQR]				
	24.2 (12.9–30) [21.9–26.5]	32.5 (30–65.9) [31.1–34.9]	25.6 (12.1–30) [23.5–27.7]	32.9 (30–55.1) [31.2–35.6]
Diagnosis, N (%)				
Acute leukemia	17,183 (58.8%)	2989 (57.2%)	787 (55.6%)	374 (54.4%)
Chronic leukemia	1176 (4%)	266 (5.1%)	55 (3.9%)	29 (4.2%)
Lymphoma	3668 (12.6%)	629 (12%)	128 (9%)	65 (9.4%)
Plasma cell disorders	792 (2.7%)	182 (3.5%)	37 (2.6%)	22 (3.2%)
MDS/MPN	6389 (21.9%)	1162 (22.2%)	408 (28.8%)	198 (28.8%)
Disease risk index, N (%)				
Low	2519 (9.2%)	560 (11.4%)	94 (7.1%)	48 (7.5%)
Intermediate	17,315 (63.1%)	3139 (63.7%)	832 (63.1%)	416 (65.1%)
High	6428 (23.4%)	1060 (21.5%)	332 (25.2%)	155 (24.3%)
Very High	1165 (4.2%)	170 (3.4%)	60 (4.6%)	20 (3.1%)
Missing	1781	299	97	49
Donor type, N (%)				
Identical sibling	9034 (30.9%)	1652 (31.6%)	406 (28.7%)	211 (30.7%)
MUD 10/10	11,797 (40.4%)	2140 (40.9%)	586 (41.4%)	309 (44.9%)
MMUD 9/10	2968 (10.2%)	541 (10.3%)	137 (9.7%)	75 (10.9%)
MMUD 8/10 or less	383 (1.3%)	80 (1.5%)	16 (1.1%)	12 (1.7%)
Haploidentical	5026 (17.2%)	815 (15.6%)	270 (19.1%)	81 (11.8%)
Cell source, N (%)				
Bone marrow	3071 (10.5%)	385 (7.4%)	110 (7.8%)	21 (3.1%)
Peripheral blood	26,137 (89.5%)	4843 (92.6%)	1305 (92.2%)	667 (96.9%)

Table 1. continued

Characteristic	Control group (N = 29,208)	Obesity (N = 5228)	Diabetes (N = 1415)	Obesity + Diabetes (N = 688)
Conditioning intensity, N (%)				
Myeloablative	14,716 (50.8%)	2530 (48.9%)	540 (38.6%)	247 (36.6%)
Reduced intensity	14,237 (49.2%)	2646 (51.1%)	858 (61.4%)	427 (63.4%)
Missing	255	52	17	14
Total-body irradiation, N (%)				
In vivo T-cell depletion	6425 (22%)	1090 (20.8%)	254 (18%)	126 (18.3%)
ATG/Campath				
ATG/Campath	16,151 (55.7%)	3061 (58.9%)	816 (58%)	424 (61.9%)
No	12,858 (44.3%)	2140 (41.1%)	591 (42%)	261 (38.1%)
Missing	199	27	8	3

ATG anti-thymocyte globulin, HCT-Cl hematopoietic cell transplantation-specific comorbidity index, IQR inter-quartile range, MDS myelodysplastic syndrome, MPN myeloproliferative neoplasm, (M)MUD (mis)matched unrelated donor.

^aDefined from the HCT-Cl as having serum creatinine >2 mg/dL (>177 μmol/L), on dialysis, or prior renal transplantation.

^bDefined from the HCT-Cl as having coronary artery disease, congestive heart failure, myocardial infarction, or ejection fraction ≤ 50%.

^cDefined from the HCT-Cl as having had a transient ischemic attack or cerebrovascular accident.

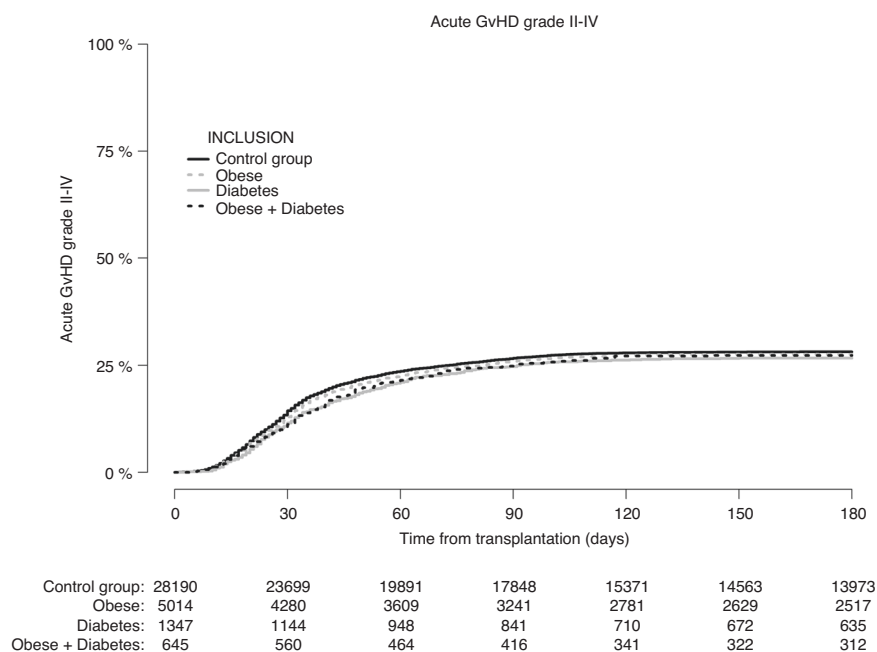


Fig. 1 Patients with missing data on acute GvHD status were excluded. Cumulative incidence of grade II–IV acute graft-versus-host disease according to pre-transplantation obesity and diabetes status.

22.5–29.2%) in patients with obesity + diabetes, compared with 27.3% (CI: 26.8–27.9%) in the control group of patients without pre-transplantation obesity and diabetes. Similar results were seen at day +180 (Table 2).

In multivariable analysis, the adjusted HR of grade II–IV acute GvHD—using the control group as reference—was 1.00 (CI: 0.94–1.06, $p = 0.89$) for patients with obesity, 0.95 (CI: 0.85–1.07, $p = 0.43$) for patients with diabetes, and 0.96 (CI: 0.82–1.13, $p = 0.63$) for patients with obesity + diabetes (Table 3).

Chronic GvHD

The 2-year cumulative incidence of chronic GvHD (both limited and extensive) was 34.9% (CI: 33.5–36.3%) in patients with obesity, 33.0% (CI: 30.4–35.7%) in patients with diabetes, 36.6% (CI: 32.6–40.6%) in patients with obesity + diabetes, compared with 34.4% (CI: 33.8–35.0%) in the control group. The 2-year cumulative incidence of extensive chronic GvHD was 15.2% (CI: 14.1–16.3%) in

patients with obesity, 15.3% (CI: 13.3–17.5%) in patients with diabetes, 19.0% (CI: 15.8–22.4%) in patients with obesity + diabetes, compared with 15.8% (CI: 15.3–16.2%) in the control group.

The adjusted HR, compared with the control group, for chronic GvHD (limited and extensive) was 1.04 (CI: 0.98–1.10, $p = 0.17$) for patients with obesity, 1.02 (CI: 0.92–1.14, $p = 0.68$) for patients with diabetes, and 1.07 (CI: 0.93–1.25, $p = 0.34$) for patients with obesity + diabetes. For extensive chronic GvHD alone, the adjusted HR was 1.00 (CI: 0.92–1.08, $p = 0.92$) for patients with obesity, 1.07 (CI: 0.92–1.25, $p = 0.37$) for patients with diabetes, and 1.18 (CI: 0.97–1.44, $p = 0.10$) for patients with obesity + diabetes (Table 3).

NRM, relapse and OS

Figure 2 shows the incidence of NRM according to pre-transplantation obesity and diabetes status. The 1-year NRM was 14% (CI: 13.6–14.4%) in the control group, 15.5% (CI: 14.5–16.5%),

in patients with obesity, 23.9% (CI: 21.6–26.3%) in patients with diabetes, and 20.0% (CI: 16.9–23.3%) in patients with obesity + diabetes. Similar differences were observed at 2-years (Table 2). In multivariable analysis, the adjusted HR (using the control group as reference) for NRM was 1.08 (CI: 1.00–1.17, $p = 0.047$) for patients with obesity, 1.40 (CI: 1.24–1.57, $p < 0.0001$) for patients with

diabetes, and 1.38 (CI: 1.16–1.64, $p = 0.0003$) for patients with obesity + diabetes (Table 3).

The cumulative incidence of relapse (Fig. 3) at 2-years was 28.2% (CI: 26.9–29.6%) in patients with obesity, 28.4% (CI: 25.8–31.0%) in patients with diabetes, and 27.7% (CI: 24.0–31.5%) in patients with obesity + diabetes, compared with

Table 2. Cumulative incidence [with 95% confidence interval] of acute and chronic GvHD, NRM, relapse, and OS according to pre-transplantation obesity and diabetes status.

Outcome	Control group (N = 29,208)	Obesity (N = 5228)	Diabetes (N = 1415)	Obesity + Diabetes (N = 688)
Acute GvHD grade II–IV (at day +100)	27.3% [26.8–27.9]	26.6% [25.4–27.9]	25.7% [23.4–28.0]	25.8% [22.5–29.2]
Chronic GvHD, limited and extensive (at 2 years)	34.4% [33.8–35.0]	34.9% [33.5–36.3]	33.0% [30.4–35.7]	36.6% [32.6–40.6]
Extensive chronic GvHD (at 2 years)	15.8% [15.3–16.2]	15.2% [14.1–16.3]	15.3% [13.3–17.5]	19.0% [15.8–22.4]
NRM (at 1-year)	14.0% [13.6–14.4]	15.5% [14.5–16.5]	23.9% [21.6–26.3]	20.0% [16.9–23.3]
NRM (at 2 years)	16.8% [16.4–17.3]	18.2% [17.1–19.4]	27.9% [25.4–30.4]	24.6% [21.1–28.2]
Relapse (at 1-year)	22.8% [22.3–23.3]	21.8% [20.6–23.0]	23.1% [20.8–25.4]	20.7% [17.5–24.1]
Relapse (at 2 years)	28.7% [28.2–29.3]	28.2% [26.9–29.6]	28.4% [25.8–31.0]	27.7% [24.0–31.5]
OS (at 1-year)	73.2% [72.7–73.7]	73.0% [71.8–74.3]	61.5% [59.0–64.2]	66.9% [63.4–70.7]
OS (at 2 years)	63.6% [63.0–64.2]	63.9% [62.5–65.3]	50.1% [47.4–53.0]	55.0% [51.1–59.2]

GvHD graft-versus-host disease, OS overall survival, NRM non-relapse mortality.

Table 3. Estimates of the impact of pre-transplantation obesity and diabetes on grade II–IV acute graft-versus-host disease and other transplant outcomes from multivariable cause-specific Cox proportional hazard regression models.

Outcome	Reference: Control group	Adjusted ^a HR [95% CI]	P
Grade II–IV acute GvHD	Obesity	1.00 [0.94–1.06]	0.89
	Diabetes	0.95 [0.85–1.07]	0.43
	Obesity + Diabetes	0.96 [0.82–1.13]	0.63
Chronic GvHD (limited + extensive)	Obesity	1.04 [0.98–1.10]	0.17
	Diabetes	1.02 [0.92–1.14]	0.68
	Obesity + Diabetes	1.07 [0.93–1.25]	0.34
Extensive chronic GvHD	Obesity	1.00 [0.92–1.08]	0.92
	Diabetes	1.07 [0.92–1.25]	0.37
	Obesity + Diabetes	1.18 [0.97–1.44]	0.10
Overall survival	Obesity	1.02 [0.97–1.08]	0.38
	Diabetes	1.29 [1.18–1.40]	<0.0001
	Obesity + Diabetes	1.23 [1.09–1.39]	0.001
Relapse	Obesity	1.02 [0.96–1.08]	0.53
	Diabetes	1.08 [0.96–1.20]	0.20
	Obesity + Diabetes	0.96 [0.81–1.13]	0.61
Non-relapse mortality	Obesity	1.08 [1.00–1.17]	0.047
	Diabetes	1.40 [1.24–1.57]	<0.0001
	Obesity + Diabetes	1.38 [1.16–1.64]	0.0003
Overall survival after grade II–IV acute GvHD	Obesity	1.02 [0.93–1.13]	0.65
	Diabetes	1.46 [1.25–1.70]	<0.0001
	Obesity + Diabetes	1.18 [0.95–1.47]	0.14

For the landmark analysis of OS after acute GvHD grade II–IV, grade of acute GvHD and time between transplantation and acute GvHD (logarithmic transformation of the continuous time) were also added to the covariate set.

^aThe following covariates were included: previous autologous transplantation (yes vs. no), year of transplantation (continuous), cell source (bone marrow vs. peripheral blood), type of donor (identical sibling vs. matched unrelated donor vs. mismatched unrelated donor vs. haploidentical donor), Disease Risk Index (high-very high vs. low-intermediate), patient age (continuous), patient and donor sex (male vs. female), patient and donor CMV (negative vs. positive), Karnofsky score (≥ 90 vs. < 90), intensity of conditioning (RIC vs. MAC), TBI (yes vs. no), and use of ATG/Campath (yes vs. no).

CI confidence interval, GvHD graft-versus-host disease, HR hazard ratio.

28.7% (CI: 28.2–29.3%) in the control group. The adjusted HR for relapse was 1.02 (CI: 0.96–1.08, $p = 0.53$) for patients with obesity, 1.08 (CI: 0.96–1.20, $p = 0.20$) for patients with diabetes, and 0.96 (CI: 0.81–1.13, $p = 0.61$) for patients with obesity + diabetes (Table 3).

OS (Fig. 4) at 2-years was 63.9% (CI: 62.5–65.3%) in patients with obesity, 50.1% (CI: 47.4–53.0%) in patients with diabetes, and 55.0% (CI: 51.1–59.2%) in patients with obesity + diabetes, compared with 63.3% (CI: 63.0–64.2%) in the control group. The adjusted HR for OS was 1.02 (CI: 0.97–1.08, $p = 0.38$) for patients with obesity, 1.29 (CI: 1.18–1.40, $p < 0.0001$) for patients with

diabetes, and 1.23 (CI: 1.09–1.39, $p = 0.001$) for patients with obesity + diabetes (Table 3).

Survival after acute GvHD

Figure 5 shows the OS according to pre-transplantation obesity and diabetes from the date of first occurrence of grade II–IV acute GvHD in the group of patients who experienced this within the first 180 days after allogeneic HCT ($N = 9555$). At 24-months after the first occurrence of grade II–IV acute GvHD, the OS of patients with pre-transplantation obesity (56.7%, CI: 54.0–59.6%) was similar to that in the control group (56.1%, CI: 54.9–57.3%),

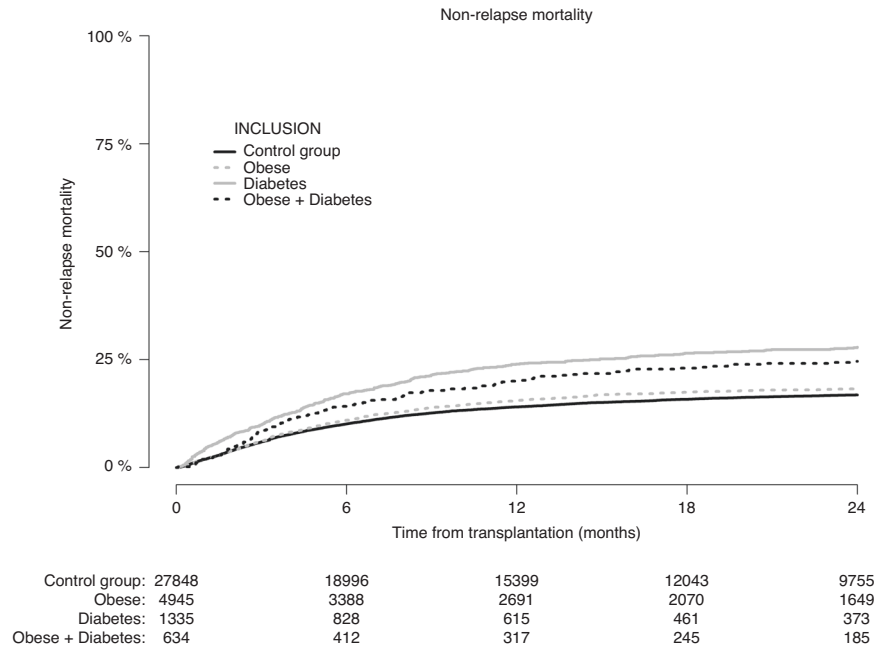


Fig. 2 Patients with missing data on relapse status were excluded. Non-relapse mortality according to pre-transplantation obesity and diabetes status.

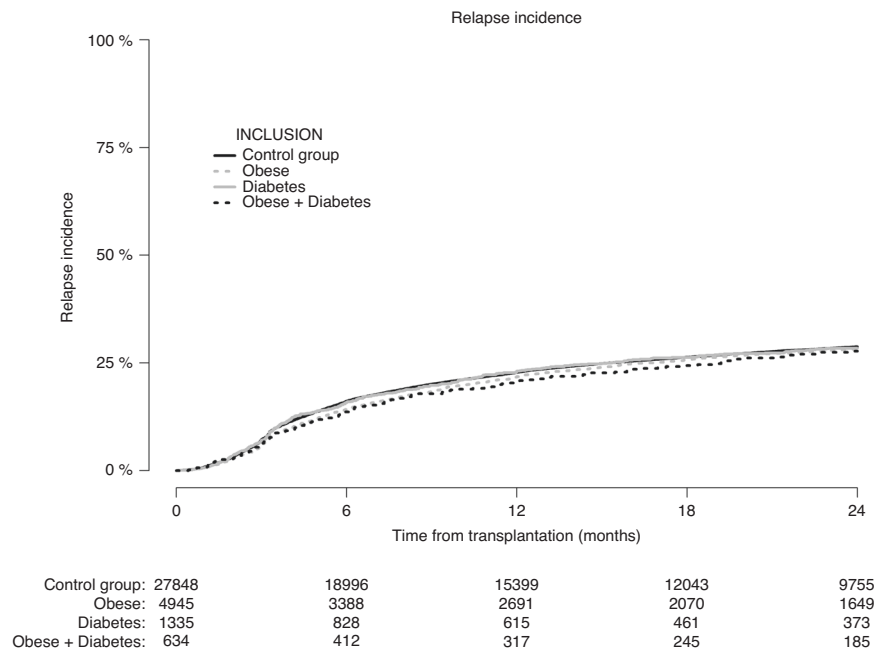


Fig. 3 Patients with missing data on relapse status were excluded. Cumulative incidence of relapse according to pre-transplantation obesity and diabetes status.

whereas patients with pre-transplantation diabetes and patients with pre-transplantation obesity + diabetes had a lower OS of 38.3% (CI: 33.2–44.1%) and 43.3% (CI: 36.1–52.1%), respectively.

In multivariable analysis (Table 3), having pre-transplantation diabetes was associated with poorer OS after a diagnosis of grade II–IV acute GvHD compared to patients without pre-transplantation diabetes or obesity (HR 1.46, CI: 1.25–1.70, $p < 0.0001$). We did not find support for an inferior survival—in comparison to the control group—in patients with pre-transplantation obesity (HR 1.02, CI: 0.93–1.13, $p = 0.65$) or with pre-transplantation obesity + diabetes (HR 1.18, CI: 0.95–1.47, $p = 0.14$).

DISCUSSION

We found that patients with pre-transplantation diabetes, obesity, or obesity + diabetes did not have an increased risk of developing grade II–IV acute GvHD compared to patients without pre-transplantation diabetes or obesity. Likewise, we did not find support for any difference in the risk of chronic GvHD. However, NRM was higher in patients with pre-transplantation diabetes, obesity or obesity+diabetes, respectively, compared to the control group. Moreover, in patients who experienced grade II–IV acute GvHD, the OS from the diagnosis of GvHD was lower in patients with pre-transplantation diabetes. Our finding that pre-existing obesity and diabetes do not influence the risk of acute GvHD

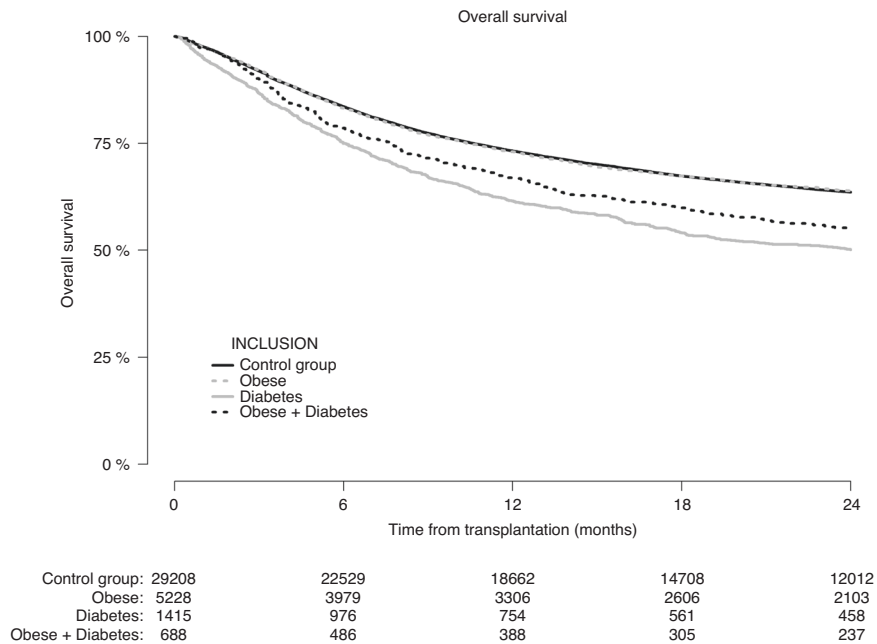


Fig. 4 Overall survival after allogeneic hematopoietic cell transplantation according to pre-transplantation obesity and diabetes status.

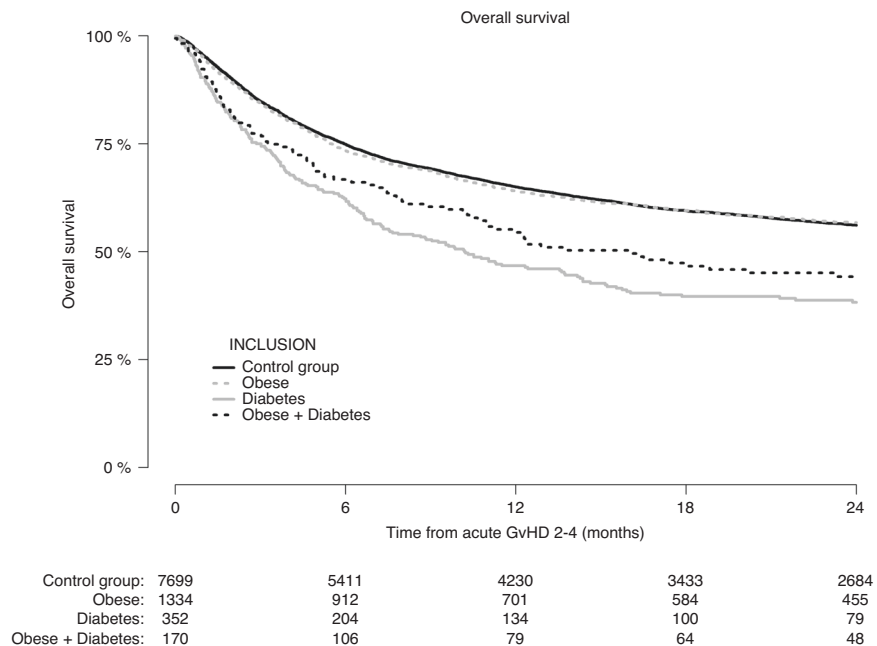


Fig. 5 Only patients who experienced grade II–IV acute GvHD within day +180 were included. Overall survival after diagnosis of grade II–IV acute graft-versus-host disease according to pre-transplantation obesity and diabetes status.

after allogeneic HCT is in agreement with previous studies [12–16, 28, 29]. Our findings extend those of the previous studies by having studied the association in a large and more recent transplant cohort, in which a significant proportion (50.2% in total) of patients received reduced-intensity conditioning.

At the same time, however, our study—as well as several previous studies [13, 14, 21–27]—found a strong association between pre-transplantation obesity and diabetes and an increased risk of NRM. Since the risk of acute GvHD was not influenced by obesity and diabetes, the increased NRM is likely to be driven by an increased risk of conditioning-induced organ damage and infections. While we did not have data on cause of death in sufficient detail nor on the incidence of infections to analyze this, previous cohort studies from Japan have established that pre-transplantation obesity entails a higher risk of systemic infections [12] and that pre-transplantation diabetes, in multivariable analysis, was associated with an increased risk of mucor infection (but not infection overall) and infection- and organ failure-related NRM [28]. The latter study also found an increase in the 1-year GvHD-related mortality in patients with pre-transplantation diabetes [28]; This echoes our finding of a decreased OS after acute GvHD in patients with pre-transplantation diabetes; a potential cause may be that patients with diabetes have more dysglycemia following steroid treatment for acute GvHD, which has been associated with lower survival [34]. While the survival after grade II–IV acute GvHD was numerically inferior also in those with obesity + diabetes, this was not statistically significant in multivariable analysis. This finding could be an artifact of lower power or that patients with obesity + diabetes differ from those with diabetes without obesity in ways (other than those we were able to adjust for) that make them less susceptible to succumbing from GvHD (e.g., there might be a higher proportion of type 1-diabetics in the group with diabetes without obesity).

Our study was limited by the dichotomous definition of pre-transplant diabetes (having diabetes requiring treatment with insulin or oral hypoglycemics, but not diet alone). This hindered an analysis of potential differences in transplant outcomes within the patient group with diabetes (as well as a comparison between type 1- and type 2-diabetes, which we did not have data on), which is likely to be heterogeneous with regards to the degree of diabetes-induced organ damage and adherence and use of anti-diabetic medications. Similarly, we were limited by our dichotomous definition of pre-transplant obesity (BMI \geq 30 kg/m²), in addition to the fact that the BMI per se is an imprecise measure of fat content, nor does it account for sex and racial differences in fat content and distribution [35]. Moreover, while we included several prognostic covariates in our multivariable analysis, we cannot exclude the possibility of residual confounding in the associations found between obesity and diabetes and increased NRM and between diabetes and lower OS after grade II–IV acute GvHD.

In conclusion, our findings suggest that having obesity or diabetes prior to allogeneic HCT does not influence the risk of developing grade II–IV acute GvHD. However, pre-transplantation obesity and/or diabetes increased the risk of NRM and having diabetes prior to transplant was associated with an increased risk of dying after being diagnosed with grade II–IV acute GvHD. Randomized clinical trials are needed to establish whether an improved glycemic control in patients with diabetes who develop acute GvHD after allogeneic HCT can improve their survival.

DATA AVAILABILITY

Data and code are available upon request from the corresponding author.

REFERENCES

- McLaughlin T, Ackerman SE, Shen L, Engleman E. Role of innate and adaptive immunity in obesity-associated metabolic disease. *J Clin Invest*. 2017;127:5–13. <https://doi.org/10.1172/JCI88876>.
- Buck MD, Sowell RT, Kaech SM, Pearce EL. Metabolic instruction of immunity. *Cell*. 2017;169:570–86. <https://doi.org/10.1016/j.cell.2017.04.004>.
- Khuat LT, Le CT, Pai CS, Shields-Cutler RR, Holtan SG, Rashidi A et al. Obesity induces gut microbiota alterations and augments acute graft-versus-host disease after allogeneic stem cell transplantation. *Sci Transl Med*. 2020;12:eaa7713. <https://doi.org/10.1126/scitranslmed.aay7713>.
- Khuat LT, Vick LV, Choi E, Dunai C, Merleev AA, Mavarakis E, et al. Mechanisms by which obesity promotes acute graft-versus-host disease in mice. *Front Immunol*. 2021;12:752484. <https://doi.org/10.3389/fimmu.2021.752484>.
- Fuji S, Kim SW, Mori S, Fukuda T, Kamiya S, Yamasaki S, et al. Hyperglycemia during the neutropenic period is associated with a poor outcome in patients undergoing myeloablative allogeneic hematopoietic stem cell transplantation. *Transplantation*. 2007;84:814–20. <https://doi.org/10.1097/01.tp.0000296482.50994.1c>.
- Gebremedhin E, Behrendt CE, Nakamura R, Parker P, Salehian B. Severe hyperglycemia immediately after allogeneic hematopoietic stem-cell transplantation is predictive of acute graft-versus-host disease. *Inflammation*. 2013;36:177–85. <https://doi.org/10.1007/s10753-012-9533-7>.
- Sopfe J, Pyle L, Keating AK, Campbell K, Liu AK, Wadwa RP, et al. Malglycemia is associated with poor outcomes in pediatric and adolescent hematopoietic stem cell transplant patients. *Blood Adv*. 2019;3:350–9. <https://doi.org/10.1182/bloodadvances.2018021014>.
- Johnpulle RA, Paczesny S, Jung DK, Daguindau E, Jagasia MH, Savani BN, et al. Metabolic complications precede alloreactivity and are characterized by changes in suppression of tumorigenicity 2 signaling. *Biol Blood Marrow Transplant*. 2017;23:529–32. <https://doi.org/10.1016/j.bbmt.2016.12.627>.
- Gyurko R, Siqueira CC, Caldon N, Gao L, Kantarci A, Van Dyke TE. Chronic hyperglycemia predisposes to exaggerated inflammatory response and leukocyte dysfunction in Akita mice. *J Immunol*. 2006;177:7250–6. <https://doi.org/10.4049/jimmunol.177.10.7250>.
- Langouche L, Vanhorebeek I, Vlasselaers D, Vander Perre S, Wouters PJ, Skogstrand K, et al. Intensive insulin therapy protects the endothelium of critically ill patients. *J Clin Invest*. 2005;115:2277–86. <https://doi.org/10.1172/JCI25385>.
- Goldberg RB. Cytokine and cytokine-like inflammation markers, endothelial dysfunction, and imbalanced coagulation in development of diabetes and its complications. *J Clin Endocrinol Metab*. 2009;94:3171–82. <https://doi.org/10.1210/jc.2008-2534>.
- Fuji S, Kim SW, Yoshimura K, Akiyama H, Okamoto S, Sao H, et al. Possible association between obesity and posttransplantation complications including infectious diseases and acute graft-versus-host disease. *Biol Blood Marrow Transplant*. 2009;15:73–82. <https://doi.org/10.1016/j.bbmt.2008.10.029>.
- Gleimer M, Li Y, Chang L, Paczesny S, Hanauer DA, Frame DG, et al. Baseline body mass index among children and adults undergoing allogeneic hematopoietic cell transplantation: clinical characteristics and outcomes. *Bone Marrow Transplant*. 2015;50:402–10. <https://doi.org/10.1038/bmt.2014.280>.
- Navarro WH, Agovi MA, Logan BR, Ballen K, Bolwell BJ, Frangoul H, et al. Obesity does not preclude safe and effective myeloablative hematopoietic cell transplantation (HCT) for acute myelogenous leukemia (AML) in adults. *Biol Blood Marrow Transplant*. 2010;16:1442–50. <https://doi.org/10.1016/j.bbmt.2010.04.009>.
- Blanc KL, Ringden O, Remberger M. A low body mass index is correlated with poor survival after allogeneic stem cell transplantation. *Haematologica*. 2003;88:1044–52.
- Nikolousis E, Nagra S, Paneesha S, Delgado J, Holder K, Bratby L, et al. Allogeneic transplant outcomes are not affected by body mass index (BMI) in patients with haematological malignancies. *Ann Hematol*. 2010;89:1141–5. <https://doi.org/10.1007/s00277-010-1001-6>.
- Paviglianiti A, Dalle JH, Ayas M, Boelens JJ, Volt F, Iori AP, et al. Low body mass index is associated with increased risk of acute GVHD after umbilical cord blood transplantation in children and young adults with acute leukemia: a study on behalf of eurocord and the EBMT pediatric disease working party. *Biol Blood Marrow Transplant*. 2018;24:799–805. <https://doi.org/10.1016/j.bbmt.2017.12.790>.
- Barker CC, Agovi MA, Logan B, Lazarus HM, Ballen KK, Gupta V, et al. Childhood obesity and outcomes after bone marrow transplantation for patients with severe aplastic anemia. *Biol Blood Marrow Transplant*. 2011;17:737–44. <https://doi.org/10.1016/j.bbmt.2010.08.019>.
- Pine M, Wang L, Harrell FE Jr, Calder C, Manes B, Evans M, et al. The effect of obesity on outcome of unrelated cord blood transplant in children with malignant diseases. *Bone Marrow Transplant*. 2011;46:1309–13. <https://doi.org/10.1038/bmt.2010.312>.
- Dang BN, Wilhalme H, Ch'ng J, De Oliveira S, Bowles L, Moore TB. Pediatric hematopoietic cell transplantation: longitudinal trends in body mass index and outcomes. *Pediatr Transplant*. 2020;24:e13844. <https://doi.org/10.1111/petr.13844>.

21. Weiss BM, Vogl DT, Berger NA, Stadtmayer EA, Lazarus HM. Trimming the fat: obesity and hematopoietic cell transplantation. *Bone Marrow Transplant.* 2013;48:1152–60. <https://doi.org/10.1038/bmt.2012.201>.
22. Nakao M, Chihara D, Niimi A, Ueda R, Tanaka H, Morishima Y, et al. Impact of being overweight on outcomes of hematopoietic SCT: a meta-analysis. *Bone Marrow Transplant.* 2014;49:66–72. <https://doi.org/10.1038/bmt.2013.128>.
23. Penack O, Peczynski C, Mohty M, Yakoub-Agha I, de la Camara R, Glass B et al. Association of pre-existing comorbidities with outcome of allogeneic hematopoietic cell transplantation. A retrospective analysis from the EBMT. *Bone Marrow Transplant.* 2022;57:183–90. <https://doi.org/10.1038/s41409-021-01502-8>.
24. Aplenc R, Zhang MJ, Sung L, Zhu X, Ho VT, Cooke K, et al. Effect of body mass in children with hematologic malignancies undergoing allogeneic bone marrow transplantation. *Blood.* 2014;123:3504–11. <https://doi.org/10.1182/blood-2013-03-490334>.
25. Doney K, McMillen K, Buono L, Deeg HJ, Gooley T. Impact of body mass index on outcomes of hematopoietic stem cell transplantation in adults. *Biol Blood Marrow Transplant.* 2019;25:613–20. <https://doi.org/10.1016/j.bbmt.2018.10.006>.
26. Fleming DR, Rayens MK, Garrison J. Impact of obesity on allogeneic stem cell transplant patients: a matched case-controlled study. *Am J Med.* 1997;102:265–8. [https://doi.org/10.1016/S0002-9343\(96\)00450-0](https://doi.org/10.1016/S0002-9343(96)00450-0).
27. Yu J, Lin S, Luo Y, Shi J, Tan Y, Lai X, et al. Obesity is correlated with poor outcome after allogeneic hematopoietic stem cell transplantation in patients with acute leukemia. *Jpn J Clin Oncol.* 2020;50:889–96. <https://doi.org/10.1093/jjco/hyaa053>.
28. Takano K, Fuji S, Uchida N, Ogawa H, Ohashi K, Eto T, et al. Pre-transplant diabetes mellitus is a risk factor for non-relapse mortality, especially infection-related mortality, after allogeneic hematopoietic SCT. *Bone Marrow Transplant.* 2015;50:553–8. <https://doi.org/10.1038/bmt.2014.315>.
29. Sorror ML, Martin PJ, Storb RF, Bhatia S, Maziarz RT, Pulsipher MA, et al. Pretransplant comorbidities predict severity of acute graft-versus-host disease and subsequent mortality. *Blood.* 2014;124:287–95. <https://doi.org/10.1182/blood-2014-01-550566>.
30. Lin X, Xu Y, Pan X, Xu J, Ding Y, Sun X, et al. Global, regional, and national burden and trend of diabetes in 195 countries and territories: an analysis from 1990 to 2025. *Sci Rep.* 2020;10:14790. <https://doi.org/10.1038/s41598-020-71908-9>.
31. Finkelstein EA, Khavjou OA, Thompson H, Trogon JG, Pan L, Sherry B, et al. Obesity and severe obesity forecasts through 2030. *Am J Prev Med.* 2012;42:563–70. <https://doi.org/10.1016/j.amepre.2011.10.026>.
32. Przepiorka D, Weisdorf D, Martin P, Klingemann HG, Beatty P, Hows J, et al. 1994 consensus conference on acute GVHD grading. *Bone Marrow Transplant.* 1995;15:825–8.
33. Shulman HM, Sullivan KM, Weiden PL, McDonald GB, Striker GE, Sale GE, et al. Chronic graft-versus-host syndrome in man. A long-term clinicopathologic study of 20 Seattle patients. *Am J Med.* 1980;69:204–17. [https://doi.org/10.1016/0002-9343\(80\)90380-0](https://doi.org/10.1016/0002-9343(80)90380-0).
34. Pidalá J, Kim J, Kharfan-Dabaja MA, Nishihori T, Field T, Perkins J, et al. Dysglycemia following glucocorticoid therapy for acute graft-versus-host disease adversely affects transplantation outcomes. *Biol Blood Marrow Transplant.* 2011;17:239–48. <https://doi.org/10.1016/j.bbmt.2010.07.005>.
35. Ahima RS, Lazar MA. Physiology. The health risk of obesity-better metrics imperative. *Science.* 2013;341:856–8. <https://doi.org/10.1126/science.1241244>.

ACKNOWLEDGEMENTS

The authors would like to thank the EBMT Transplant Complications Working Party for their support of the study.

AUTHOR CONTRIBUTIONS

LKG and TR was responsible for designing and setting up the study, interpreting data and writing the first draft of the manuscript. CP was responsible for analyzing and interpreting data and writing the manuscript. WB was responsible for collecting and linking data. NK, DB,

TS, RPdL, TGD, AK, HS, IYA, JF, ME and GB were responsible for collecting and interpreting data and reviewing the manuscript. IM, HS, CK, OP and ZP were responsible for supervising the study, interpreting data, and writing the manuscript.

FUNDING

Open access funding provided by Central Region of Denmark.

COMPETING INTERESTS

The authors declare no competing interests.

ADDITIONAL INFORMATION

Correspondence and requests for materials should be addressed to Lars Kligen Gjørde.

Reprints and permission information is available at <http://www.nature.com/reprints>

Publisher's note Springer Nature remains neutral with regard to jurisdictional claims in published maps and institutional affiliations.



Open Access This article is licensed under a Creative Commons Attribution 4.0 International License, which permits use, sharing, adaptation, distribution and reproduction in any medium or format, as long as you give appropriate credit to the original author(s) and the source, provide a link to the Creative Commons licence, and indicate if changes were made. The images or other third party material in this article are included in the article's Creative Commons licence, unless indicated otherwise in a credit line to the material. If material is not included in the article's Creative Commons licence and your intended use is not permitted by statutory regulation or exceeds the permitted use, you will need to obtain permission directly from the copyright holder. To view a copy of this licence, visit <http://creativecommons.org/licenses/by/4.0/>.

© The Author(s) 2023



Emerging Leader Author Profile:

Lars Kligen Gjørde is a medical doctor and a hematology/BMT trainee at the Department of Hematology at Rigshospitalet, Copenhagen University Hospital in Copenhagen, Denmark. He is the co-vice chair of the EBMT Trainee Committee and is active in the EBMT Transplant Complications Working Party. His research focuses on biomarkers and risk factors of acute GvHD and outcomes of allogeneic transplantation for acute leukemia. He received his PhD from the University of Copenhagen in 2022.