



HAL
open science

The Wall: The Earth in True Natural Color from Real-Time Geostationary Satellite Imagery

Louis Gonzalez, Hirokazu Yamamoto

► **To cite this version:**

Louis Gonzalez, Hirokazu Yamamoto. The Wall: The Earth in True Natural Color from Real-Time Geostationary Satellite Imagery. Remote Sensing, 2020, Remote Sensing, 12 (15), pp.2375. 10.3390/rs12152375 . hal-04548746

HAL Id: hal-04548746

<https://hal.univ-lille.fr/hal-04548746>

Submitted on 16 Apr 2024

HAL is a multi-disciplinary open access archive for the deposit and dissemination of scientific research documents, whether they are published or not. The documents may come from teaching and research institutions in France or abroad, or from public or private research centers.

L'archive ouverte pluridisciplinaire **HAL**, est destinée au dépôt et à la diffusion de documents scientifiques de niveau recherche, publiés ou non, émanant des établissements d'enseignement et de recherche français ou étrangers, des laboratoires publics ou privés.



Distributed under a Creative Commons Attribution 4.0 International License

Article

The Wall: The Earth in True Natural Color from Real-Time Geostationary Satellite Imagery

Louis Gonzalez ^{1,*}  and Hirokazu Yamamoto ² ¹ LOA—Laboratoire d’Optique Atmosphérique, University of Lille, CNRS, UMR 8518, F-59000 Lille, France² Geological Survey of Japan, National Institute of Advanced Industrial Science and Technology, 1-1-1-C7, Higashi, Tsukuba 305-8567, Japan; hirokazu.yamamoto@aist.go.jp

* Correspondence: louis.gonzalez@univ-lille.fr

Received: 24 June 2020; Accepted: 20 July 2020; Published: 24 July 2020



Abstract: We present “The Wall”, the first web-based platform that animates the Earth in true natural color and close to real-time. The living planet is displayed both during day and night with a pixel resolution of approximately 1 km and a time frequency of 10 min. The automatic processing chains use the synchronized measurements provided by three geostationary satellites: the METEOSAT Second Generation (MSG2), Himawari-8, and GOES-16. A Rayleigh scattering correction is applied, and a cloud of artificial neural networks, chosen to render “true natural color” RGB composites, is used to recreate the missing daytime bands in the visible spectrum. The reconstruction methodology is validated by means of the TERRA/AQUA “Moderate Resolution Imaging Spectroradiometer” (MODIS) instrument reflectance values. “The Wall” is a dynamic broadcasting platform from which the scientific community and the public can trace local and Earth-wide phenomena and assess their impact on the globe.

Keywords: geostationary satellites; MSG2 SEVIRI; Himawari-8 AHI; GOES-16; MODIS Terra/Aqua; true natural color imagery; atmospheric correction; artificial neural network

1. Introduction

For many years geostationary satellites have surrounded and observed the Earth. In the last decade, their resolution has improved to 1 km at nadir. At the same time, real-time reception of imagery has become increasingly practical through satellite downlinks and online-accessible archives. However, little effort has been devoted to the creation of images showing the whole Earth in the splendor of its natural color. One of the main reasons is that often one or more components of the visible spectrum is not measured by the sensors on-board the satellites. In this application, we have selected three geostationary satellites to tile the entire globe: (1) The MSG2 “Spinning Enhanced Visible and Infrared Imager” (MSG2 SEVIRI) instrument managed by EUMETSAT was launched in 2002, and offers a resolution of 3 km at nadir. It covers Europe, Africa, and the Middle East. However, the blue and green visible bands (0.4 and 0.5 μm) are missing and make this satellite almost blind over the spectral range of human vision. (2) The NASA GOES-16 series “Advanced Baseline Imager” (ABI) [1] instrument covers the American continent. Launched in 2016, and managed by NOAA, it has a resolution of 1 km at nadir but it lacks the visible green band. (3) The Himawari-8 [2,3] “Advanced Himawari Imager” (AHI) instrument managed by the Japan Meteorological Agency (JMA) was launched in 2014. This instrument captures all three visible bands with a resolution of 1 km at nadir and covers the Western Pacific region. These three instruments offer detailed and quantitative monitoring of a wide array of surface and atmospheric parameters [1,4]. Although the tracking of atmospheric and land-surface phenomena usually requires the interrogation and combination of multiple spectral bands, we think it is also desirable for the human eye to view the spectral data in natural color RGB composites to help the analysis of the image components.

True color renderings of geostationary data can be assessed from the comparison with the orbiting satellite imagers that hold three visible reflectance bands at approximately 0.4, 0.5 and 0.6 μm , hereafter called RGB visible bands. In this work, we will use Moderate Resolution Imaging Spectroradiometer (MODIS) as a reference.

Today, several RGB composite terminologies are used: "Natural color RGB", "Natural color RGB (enhance)", "True color reproduction image", and "GeoColor", as displayed in Figure 1, all trying to mimic with more or less success what we think is "True natural color" corresponding to the human vision. Himawari-8 AHI uses the visible bands at 0.4697, 0.5094 and 0.6363 μm to directly build RGB images called "true color reproduction" images [3,5] (see inset (C) of Figure 1). Both Himawari-8 AHI and MSG2 SEVIRI create so-called "natural color RGB" composites [6] (see inset (A) of Figure 1) using the bands at 1.6, 0.8 and 0.6 μm , in which the clouds appear blue-green. Alternatively, the clouds are replaced by white levels, leading to the "natural color RGB (Enhance)" composite (see inset (B) of Figure 1). The best RGB rendering is the "GeoColor" approach for GEOS-16 (see inset (D) of Figure 1), for which the missing green band is reconstructed either from correlations to adjacent bands or from a lookup table constructed from Himawari-8 AHI green band [7,8].

The project is named "The Wall" as a huge billboard broadcasting over the globe the best possible color rendering of geostationary satellite images and animations to the public and to the scientific community. It is thus necessary to create "true natural color" images for the three complementary satellites (GOES-16 ABI, MSG2 SEVIRI, and Himawari-8 AHI), using visible bands which, in cases where they are lacking on sensors like MSG2 SEVIRI and GOES-16 ABI, have to be reconstructed. In the published NASCube (North African Sandstorm Survey) project and web platform [9], we have demonstrated that artificial neural networks (ANNs) are very powerful to reconstruct reflectance signals of the MSG2 SEVIRI instrument. ANNs were also used to track sandstorms over the Sahara and Middle East and to estimate their optical thicknesses. We propose hereafter to apply this ANN methodology to predict the missing green band for the GOES-16 ABI. The reconstruction will be validated by comparison with the NASA MODIS products.

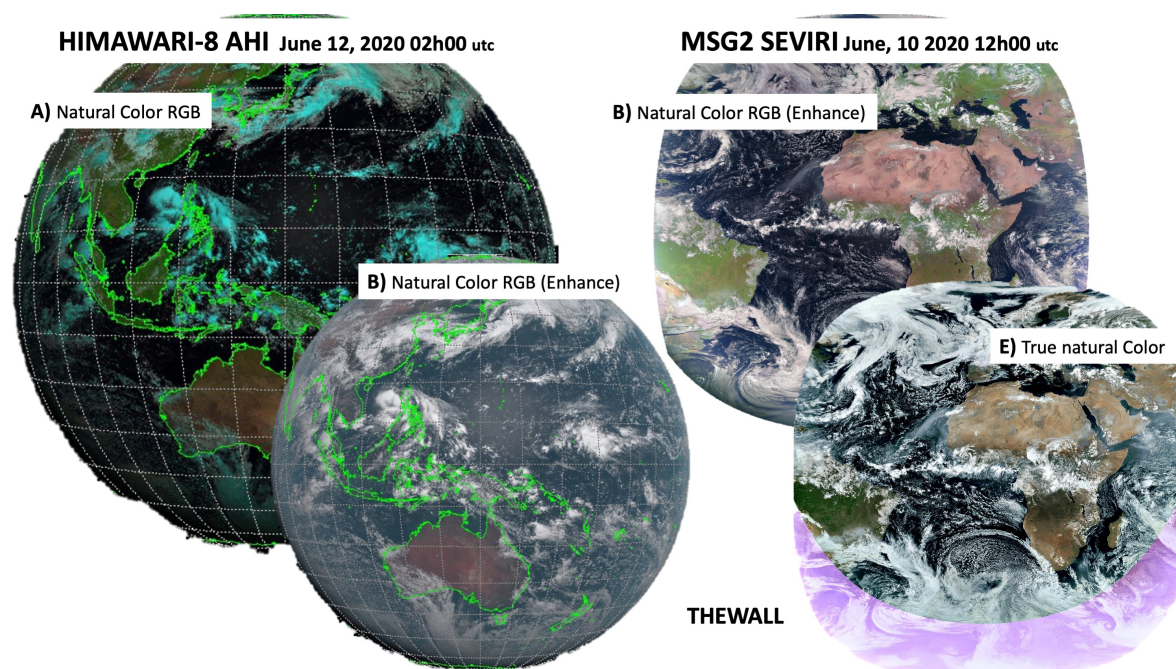


Figure 1. Cont.

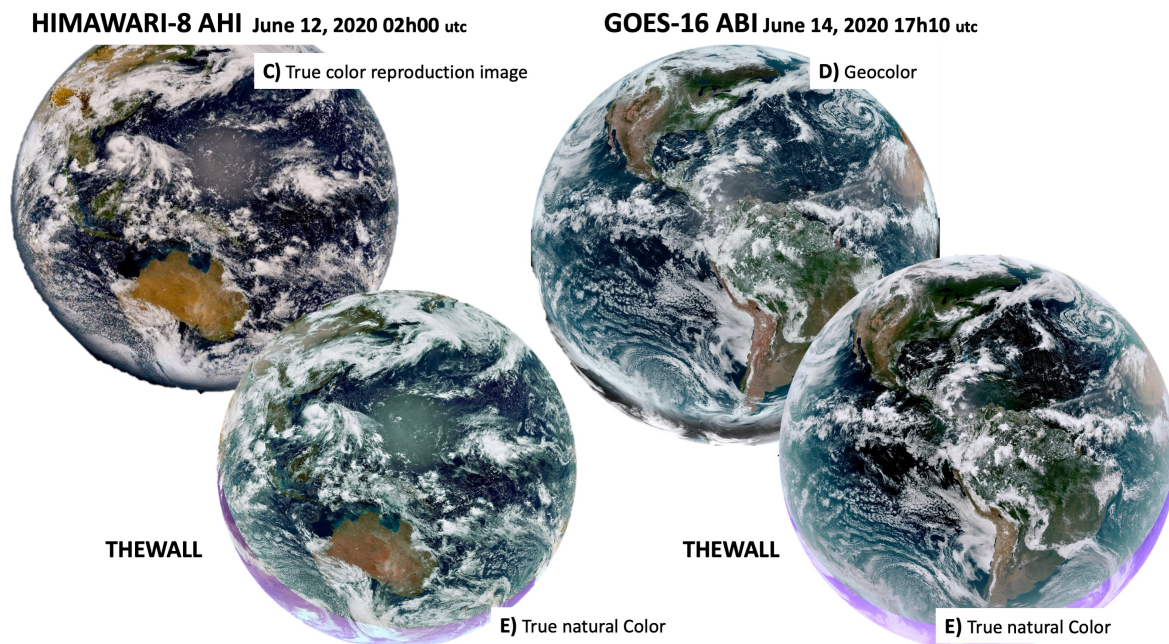


Figure 1. Illustrations of existing color renderings labeled as (A) *natural color RGB*, (B) *natural color RGB (Enhance)*, and (C) *True color reproduction image* created for Himawari-8 AHI. (D) *GeoColor* created for GOES-16 ABI; (E) *true natural color RGB* composites from this work for “The Wall” application (Himawari-8 AHI, MSG2 SEVIRI and GOES-16 ABI).

2. Methodology to Process the Geostationary Satellite Data

The aim of the study is to present a homogeneous visualization of the main atmospheric and terrestrial phenomena during day and night times, using data acquired simultaneously from three instruments with measurement characteristics that differ in terms of wavelengths, pixel sizes, and acquisition time delays. To perform this task, we have collected the level 1B data products, and calibrated and geolocated radiances expressed in radiance units $W\ sr^{-1}\ m^{-2}$ over the Full Disk (FD).

We first present the specifications of the spectral bands used for each satellite (see Section 2.1). Section 2.2 explains the construction of the pseudocolor composites in night-time from several thermal infrared bands. Section 2.3 details the atmospheric corrections applied to the used spectral visible and near-infrared (NIR) bands. It also focuses on the key algorithms designed and implemented to reconstruct the missing visible bands for GOES-16 ABI and MSG2 SEVIRI, and finally build “*true natural color*” composite images.

2.1. Spectral Bands and Satellite Specifications of the Level 1B Data Products

2.1.1. Satellites with 1 km Resolution at Nadir

Both Himawari-8 AHI and GOES-16 ABI have a 1 km resolution at nadir and an acquisition delay time of 10 min. Himawari-8 AHI monitors the West Pacific ((144.418°W, 64.903°E)/(75.348°S, 75.348°N)). It is managed by the Japan Meteorological Agency (JMA) with on the on-board instrument AHI imager. The data is distributed by the National Institute of Information and Communications Technology (NICT) Science Cloud [10,11]. We have processed 6 of the 16 available bands, referenced by their central wavelength: 0.4697, 0.5094, 0.6363, 3.8823, 8.5878, and 9.6329 μm . The first three map the visible range as displayed in Figure 2.

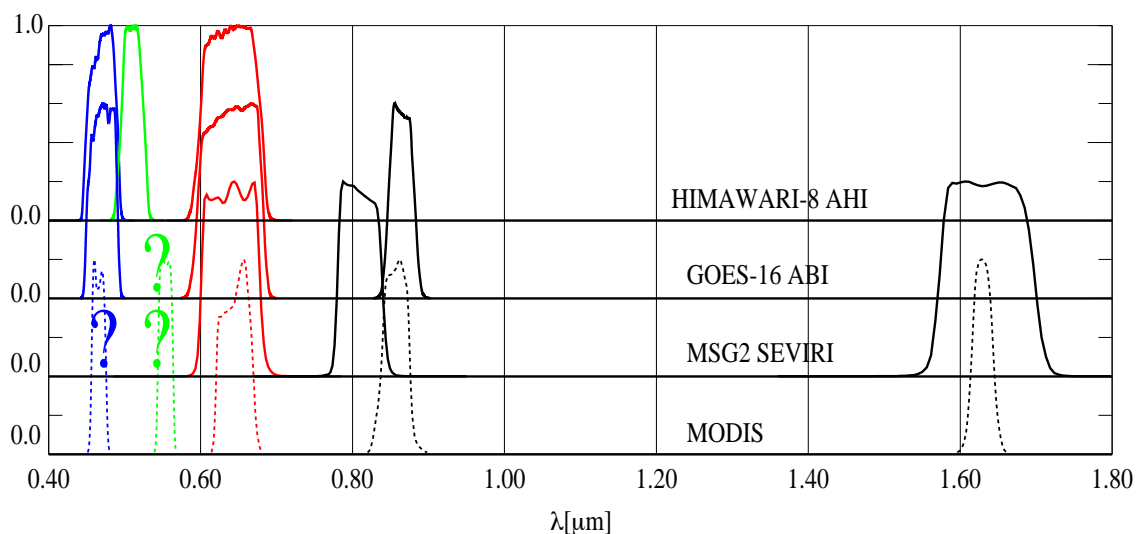


Figure 2. Normalized spectral response functions of Himawari-8 AHI, GOES-16 ABI, MSG2 SEVIRI (solid lines), and MODIS (dotted lines) visible and near-infrared (VNIR) bands, shifted along the y -axis for the sake of clarity. The questions marks indicate the missing visible bands in GOES-16 ABI and MSG2 SEVIRI imagers.

To map the American continent, we have used the GOES-16 ABI-EAST region ((156.299°W, 6.299°E)/(81.328°S, 81.328°N)) which is managed by the National Environmental Satellite, Data, and Information Service (NESDIS) with the on-board ABI and distributed by the Google Cloud Platform [12]. We have processed 6 of the 16 bands, referenced by their central wavelengths: 0.4702, 0.6365, 0.8639, 3.8905, 8.4444 and 9.6072 μm . Note that the green visible band is missing in this instrument.

2.1.2. MSG2 SEVIRI Data with 3 km Resolution at Nadir

The MSG2 geostationary platform, equipped with MSG2 SEVIRI instrument, provides observations of Europe, Africa, Middle East, etc. ((81.236°W, 81.236°E)/(81.144°S, 81.144°N)), every 15 min since 2004. The satellite is managed by the European Organization for the Exploitation of Meteorological Satellites (EUMETSAT). We have processed 6 out of the 12 distributed spectral channels, referenced by their central wavelengths: 0.6, 0.8, 1.6, 3.9, 8.7 and 9.7 μm . Note that both the blue and green visible bands are missing as indicated in Figure 2.

2.2. Night-Time RGB Composite

The RGB rendering of night-time images is not straightforward. One option is to render them in gray levels. In “The Wall”, we currently offer two empirical algorithms designed with the primary aim of keeping a visual day/night white color transition of the clouds for the NIR bands shown in Figure 3. The final night composite is sufficiently sensitive to show in the video animations the propagation of the thermal changes over the Earth surface. The first algorithm is taken from that used for the NASCube project [9] and is directly applied to GOES-16 ABI. The second algorithm is a linear combination of bands applied to Himawari-8 AHI images. The results are close enough to offer a smooth visualization over the whole globe.

The three MSG2 SEVIRI (3.9, 8.7 and 9.7 μm) and GOES-16 ABI (3.8905, 8.4444 and 9.6072 μm) radiances are used to build the RGB (0; 255) Pseudo-Night Composites (PNC) for each instrument acquisition. The final image is directly computed by means of a linear-log transformation of the corresponding radiance values ρ_i :

$$PNC(\lambda_i) = 255 \times \frac{\log(10000 \times (a_i - b_i \rho_i)) - \min_i}{(\max_i - \min_i)}. \quad (1)$$

For Himawari-8 AHI, the RGB PNC is constructed from the following three bands (3.8823, 8.5878 and 9.6329 μm), and the final image is computed using a linear transformation of the corresponding radiance values:

$$PNC(\lambda_i) = 256 \times (a_i - b_i \rho_i) \quad (2)$$

The a_i , b_i , min_i , and max_i parameters are listed in Table 1. They were empirically adjusted to yield the best contrast for the resulting night images, as illustrated in Figure 4. Figures 5 and 6 illustrate the ability of the night composite to highlight the ground hot spots. In Figure 5, the active bushfires that raged in early 2020 in Australia are visible as dark spots on the night RGB image. In Figure 6, the activity of the Klyuchevskaya volcano in the Kamchatka Peninsula appears as a blue hot spot.

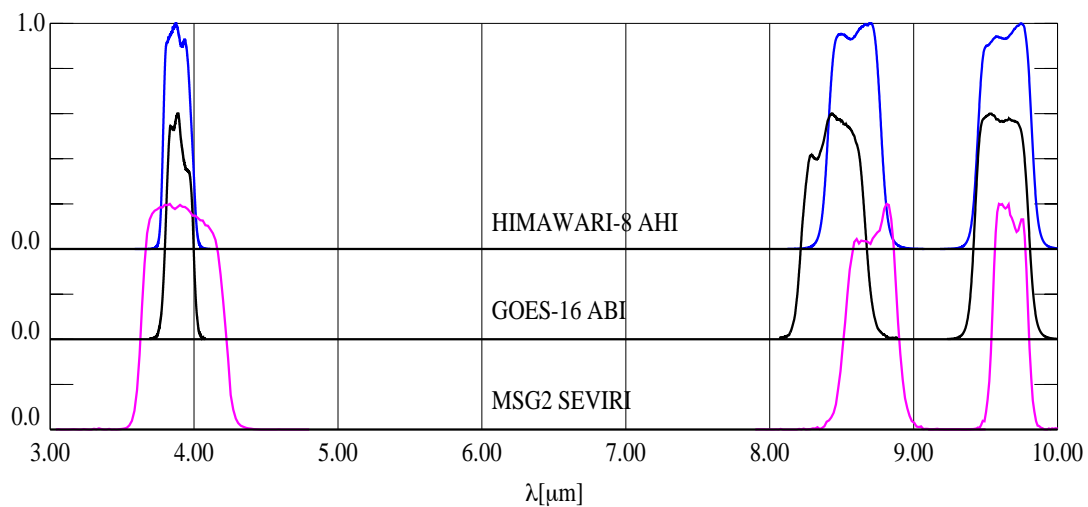


Figure 3. Normalized spectral response functions of Himawari-8 AHI, GOES-16 ABI, and MSG2 SEVIRI infrared bands in μm , shifted along the y -axis for the sake of clarity. These bands are used to build the Pseudo-Night Composites.

Table 1. Parameters for the linear-log and linear transformations to the Pseudo Night Composites for MSG2 SEVIRI, GOES-16 ABI, and Himawari-8 AHI satellites.

λ_i (μm)	PNC Channel	a_i	b_i	min_i	max_i
MSG2 SEVIRI					
3.88	R	0.004975	1.308458	7.5	9.5
8.58	G	0.002165	1.246753	7.7	9.5
9.63	B	0.004202	1.899160	7.5	9.5
GOES-16 ABI					
3.89	R	0.000338	1.007768	7.5	9.5
8.44	G	0.000501	1.046115	7.7	9.5
9.60	B	0.001000	1.176000	7.5	9.5
Himawari-8 AHI					
3.9	R	−1.269036	0.842010	N/A	
8.7	G	−0.119018	1.118907	N/A	
9.7	B	−0.181937	1.250030	N/A	

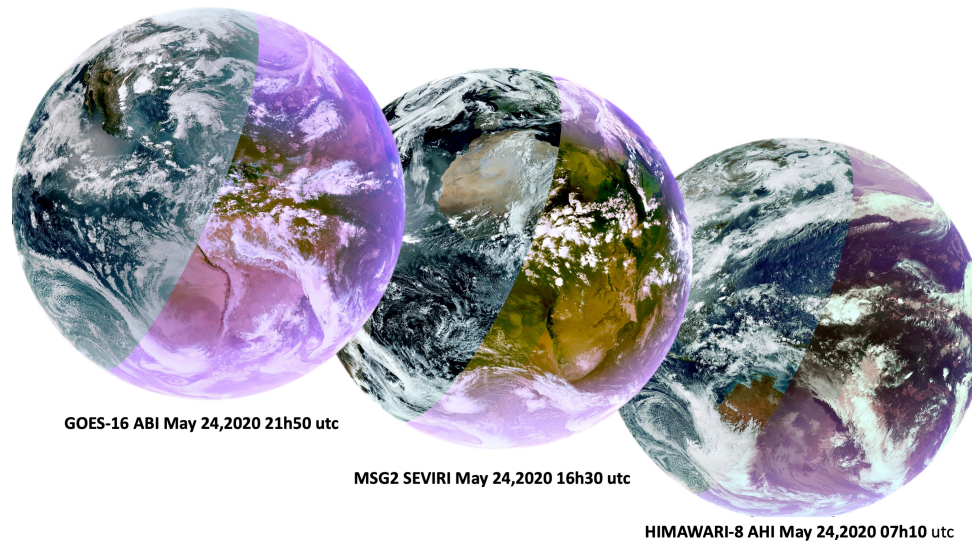


Figure 4. Examples of day and night RGB composites for GOES-16 ABI (left), MSG2 SEVIRI (middle), and Himawari-8 AHI (right) data for the same day 24 May 2020.

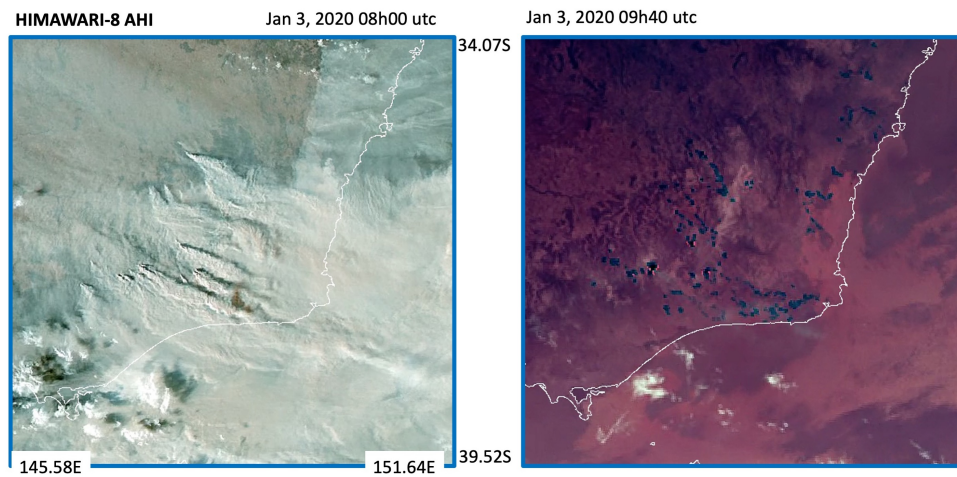


Figure 5. Day and night views of the January 2020 bushfires raging on Victoria region’s eastern coast in Australia, which were captured by Himawari-8 AHI. The fire activity is visible at night as dark/blue spots.

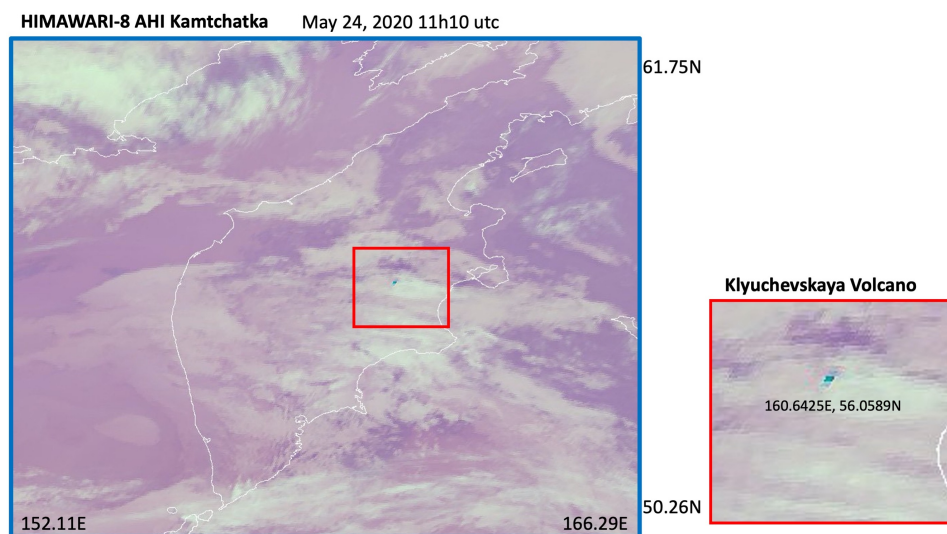


Figure 6. Night views of the active Klyuchevskaya volcano in the Kamchatka Peninsula in May 2020, captured by Himawari-8 AHI.

2.3. Daytime RGB Composite

Daytime reflectance values are rendered with a “True Natural Color RGB Composite” (TNCC) that is built from visible reflectance data. For MSG2 SEVIRI and GOES-16 ABI, we had to reconstruct the missing visible bands with a cloud of ANNs, which is applied to the spectral bands that have been corrected for atmospheric effects as described below.

2.3.1. Atmospheric Corrections

To obtain natural colors from the recorded reflectance values, the minimum atmospheric correction required is the compensation for the Rayleigh scattering contribution, to which a correction for ozone aerosols was added according to the 6S radiative transfer code (6sV2.1) [13]. The corrections are identical to that applied for the NASCube study [9], but we list them here for the sake of completeness. Let L_m ($W\ sr^{-1}\ m^{-2}$) be the Top-Of-Atmosphere (TOA) radiance in band m and ρ_m the TOA reflectance, calculated as

$$\rho_m = \pi L_m / \mu_s E_s, \quad (3)$$

with $\mu_s = \cos \theta_s$, where θ_s is the solar zenith angle, and with E_s the solar flux at the top of the atmosphere. The Rayleigh and ozone corrections assuming a Lambert’s law of the surface reflectance defines ρ_m as

$$\rho_m = T_{O_3} \left[\rho_{atm} + \frac{T(\mu_s)T(\mu_v)\rho_s}{1 - \rho_s \cdot S_{alb}} \right], \quad (4)$$

where ρ_s stands for the surface reflectance, S_{alb} is the spherical albedo of the atmosphere, and $\mu_v = \cos \theta_v$, with θ_v the view zenith angle as defined in the 6S reference manual [14,15]. In Equation (4), T_{O_3} accounts for the light absorption on the direct downward and upward paths through the stratospheric ozone layer:

$$T_{O_3} = \exp \left(-A_{O_3} \cdot \mu_{O_3} \cdot \left(\frac{1}{\cos \theta_s} + \frac{1}{\cos \theta_v} \right) \right), \quad (5)$$

where μ_{O_3} is the ozone absorber amount for each satellite wavelength, and A_{O_3} is the ozone absorption coefficient by Shettle et al. [16], tabulated in steps of $200\ cm^{-1}$ between 13.000 and $24.200\ cm^{-1}$ and by steps of $500\ cm^{-1}$ between 27.500 and $50.000\ cm^{-1}$.

The other terms of Equation (4) correspond to atmospheric effects and are estimated assuming both a black surface and a pure molecular atmosphere. ρ_{atm} is the atmospheric reflectance that corresponds to the light directly scattered by the atmosphere. It is computed by the analytical expressions [14] that reproduce Chandrasekhar isotropic scattering values [17]. $T(\mu_s)$ and $T(\mu_v)$ are the transmission fluxes of the atmosphere on the path between the sun and the surface, and, respectively, between the surface and the sensor. Both are estimated from the Delta–Eddington approximation [18], such as

$$T(\mu) = \frac{(2/3 + \mu) + (2/3 - \mu) \cdot e^{-\tau/\mu}}{(4/3 + \tau)}, \quad (6)$$

where μ is the cosine of the solar and/or observational zenith angle and τ is the optical thickness. For a pure molecular atmosphere and for some observation conditions (μ_s , μ_v , and ρ_s), numerical figures of ρ_m were derived directly (independently) from the “successive orders of scattering” code of Lenoble et al. [19]. By reporting these contributions to the left-hand side of Equation (4), S_{alb} can be derived, leading to $S_{alb} = 0.0497$, 0.0198 , and 0.0012 for wavelengths 0.615 , 0.810 and $1.64\ \mu m$, respectively. Assuming that $(\rho_s \cdot S_{alb}) \ll 1$ in Equation (4), the surface reflectance can be computed as

$$\rho_s^* = \frac{(\rho_m / T_{O_3} - \rho_{atm})}{T(\mu_s) T(\mu_v)}, \quad (7)$$

from where, the surface reflectance is computed as

$$\rho_s = \frac{\rho_s^*}{1 + S_{alb} \cdot \rho_s^*}. \quad (8)$$

2.3.2. RGB Visible Composites

Once all three visible bands are fetched or reconstructed, the daytime RGB composite *TNCC* can be built by log-transforming the 0.4, 0.5 and 0.6 μm (0; 255) RGB visible bands colors:

$$TNCC(\lambda_i) = 256 \times \frac{\log(10000 \times (a_i - b_i \rho_i)) - \min_i}{(\max_i - \min_i)}, \quad (9)$$

with \min_i and \max_i values in the range of 5.8 to 9.6, respectively.

2.3.3. Reconstruction of the Missing Green Band for GOES-16 ABI

The details of the ANN methodology used to reconstruct the missing blue and green bands (0.4 and 0.5 μm) of the MSG2 SEVIRI sensors are given in Ref. [9]. The use of an ANN is clearly superior to any lookup table, or other band correlation algorithm, as our *true natural color* composites for MSG2 SEVIRI images appear more natural than the MSG *Natural Color RGB (Enhance)*-distributed product (see Figure 1), the reference being MODIS imagery as discussed later in the paper.

Fine-tuning the parameters of an ANN (Stuttgart Neural Network Simulator (SNNS) [20]) to faithfully reconstruct GOES-16 ABI green reflectances turned out to be a tricky process. We have designed an ANN that takes as training inputs the three MODIS 0.469, 0.645 and 0.858 μm (spectrally close to the GOES-16 ABI bands, 0.47, 0.636 and 0.863 μm , as seen from Figure 2), and the green MODIS band at 0.555 μm as target values. This ANN is a fully connected feedforward network [21]. The ANN topology we present yields the best green retrieval out of many tests we carried out. It consists of two hidden layers with 8 nodes each (See Figure 7). The training data set is composed of a selection of about thirty MODIS granules for which we hand-selected representative areas such as water, ocean colors, deserts, rocks, white and bright surfaces, etc. Once trained, the network was tested on various MODIS granules and the training ANN data set was enlarged with those showing inaccurate—poor correlation with respect to MODIS real green reflectances—reconstructed green values.

From our recent experience with the design of ANNs for aerosol optical depth retrievals and with the reconstruction of the lacking ASTER blue band [9,22], we have demonstrated that the training and accuracy of ANNs are improved if applied to specific classes of reflectance values. Thus, our new algorithm uses MODIS values that are classified according to the empirically chosen values x defining two main groups:

$$x = \rho_{MODIS}(0.469) + \frac{2}{3} (\rho_{MODIS}(0.469) + \rho_{MODIS}(0.645) + \rho_{MODIS}(0.858)), \quad (10)$$

the first one corresponding to water, dark areas, and vegetation ($x < 0.2$), and the second one to desert or cloudy areas ($x > 0.2$). Figure 8 is an example of the pixel classification over one MODIS granule, the first group being the unmasked pixels and the second group appearing in blue.

The histograms of the two groups of all MODIS input values are shown in Figure 9. Each of the two histograms is split to generate subclasses of pixel values defining the inputs of ANNs. The determination of the number of data by classes (bins) was carried out in stages by monitoring both the convergence of the networks and the quality of the green retrieval over the MODIS granules composing the training data sets. It soon became clear that the first group requires 1536 networks and converges with an average number of 6000 pixels per bin and the second group requires 1256 networks and converges with an average number of 3000 pixels per bin. For each bin of the histograms of Figure 9, a dedicated ANN with the architecture defined before (3 inputs, 2 hidden layers with 8 nodes each, and 1 output value, see Figure 7), is designed. Altogether, an ensemble of 2792 ANNs is trained.

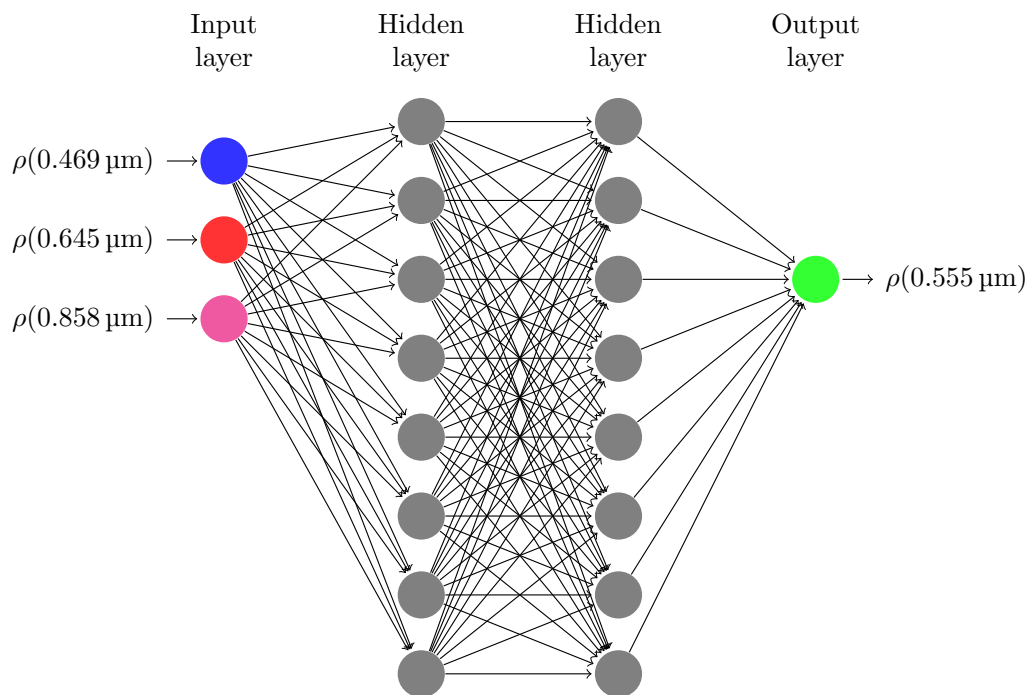
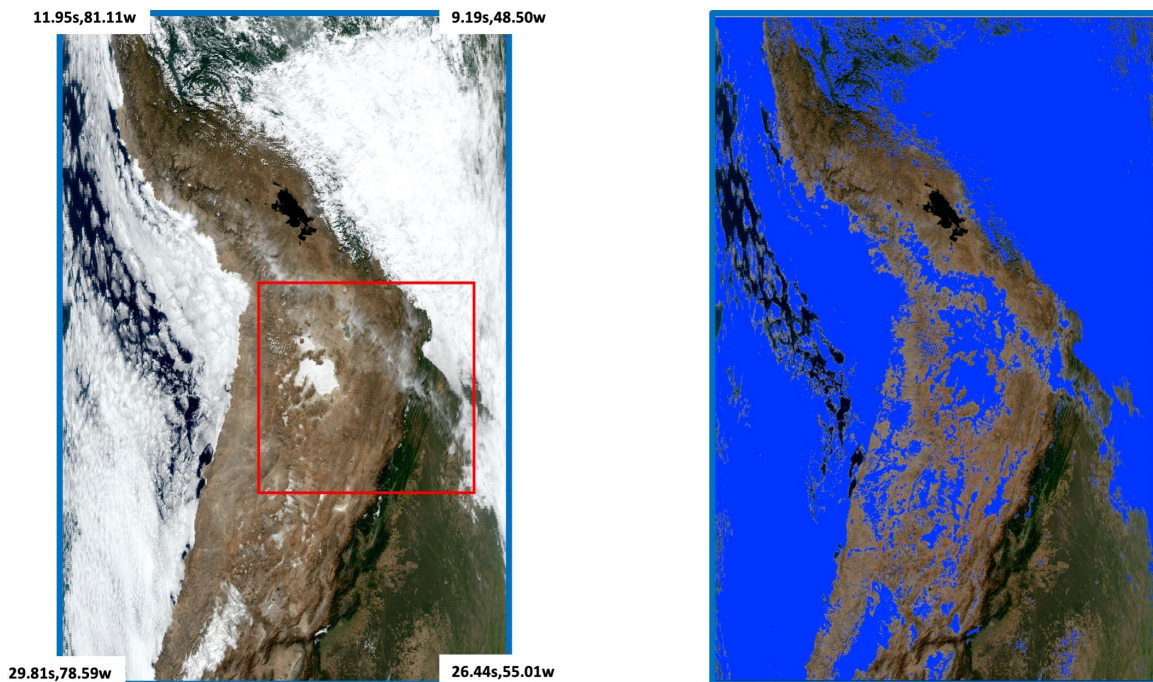


Figure 7. Topology of the artificial neural network (ANN) with one input layer taking 0.469, 0.645 and 0.858 μm as the reflectance values and 0.555 μm as the target value.



MODIS AQUA granule (no-projection)
(Chile, Argentina) June 2, 2020 18h20 utc

Unmasked: first group of pixels
Blue mask: second group of pixels

Figure 8. Illustration of the pixel classification of the training Moderate Resolution Imaging Spectroradiometer (MODIS) data. Unmasked pixels enter the first group ($x < 0.2$), while the second group ($x > 0.2$) is marked in blue. The red-selected area is used for subsequent correlation plots shown in Figures 10 and 11.

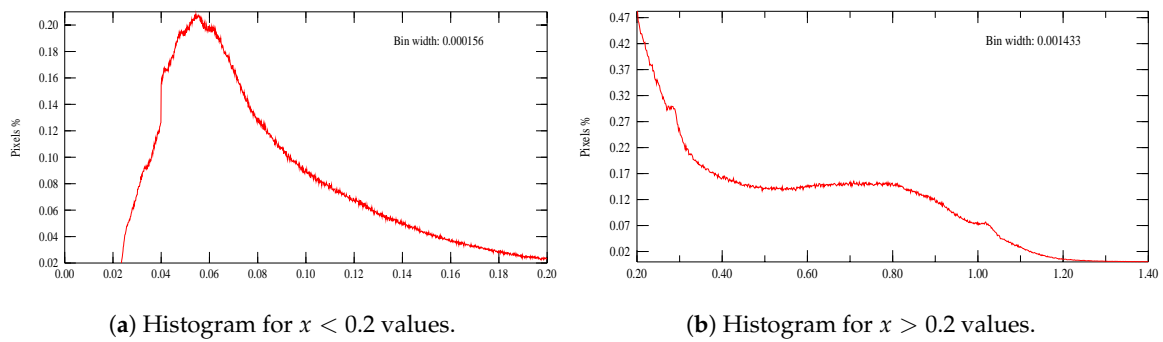


Figure 9. Histograms of the two x -value groups (Equation (10)) of MODIS data to define the ANNs' inputs.

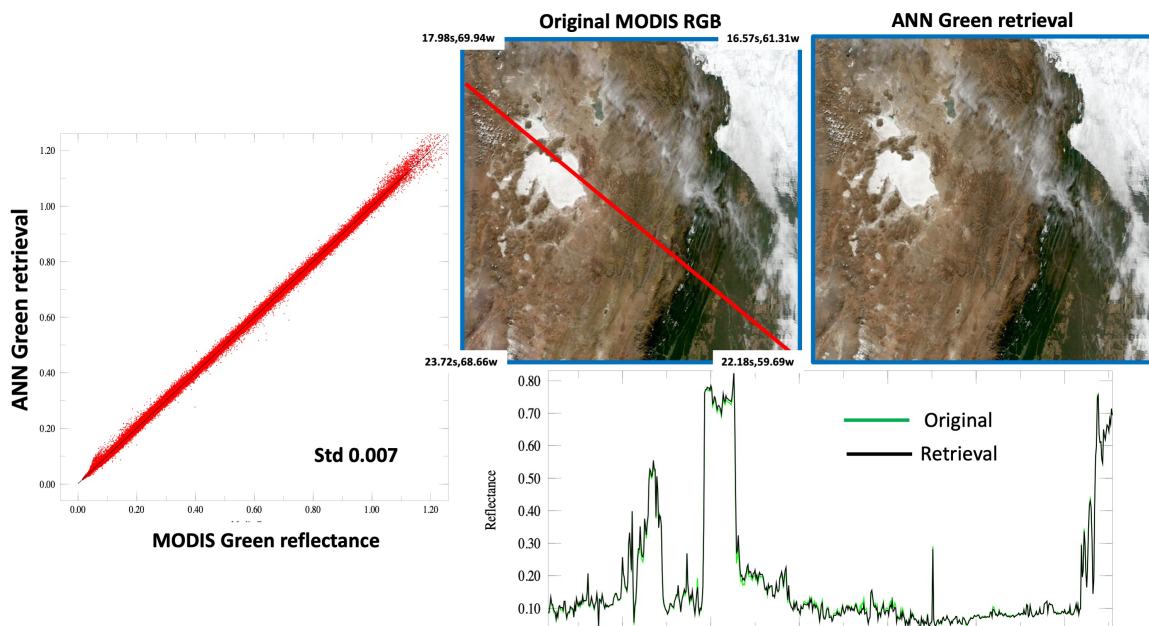


Figure 10. Illustration of the green reconstruction over the South American red-selected area in Figure 8. The left image is a RGB MODIS granule; the right image is the same but using the ANN reconstructed green band. The green and black curves represent the green reflectances across the red marked transects, for the original and reconstructed images, respectively.

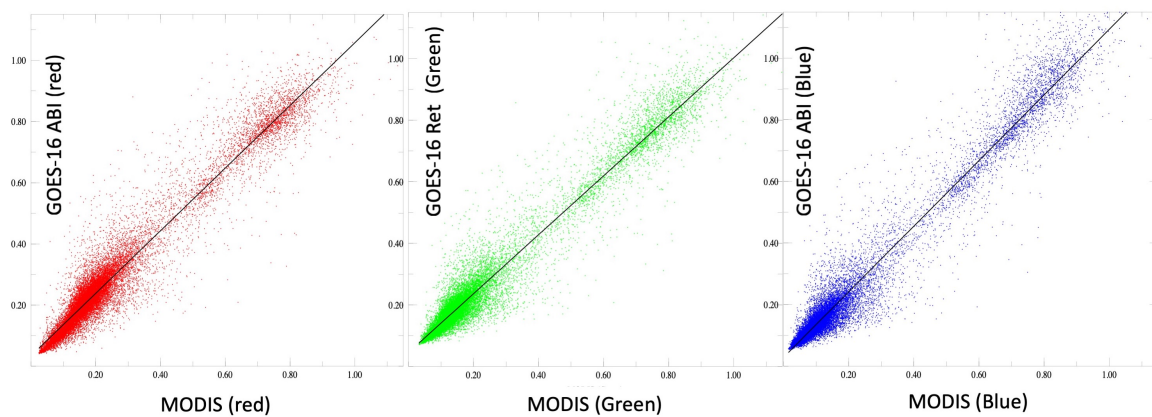


Figure 11. Correlation plots between the GOES-16 ABI and MODIS red, green, and blue reflectance values for two reprojected images over the same region in South America marked in red in Figure 8. The GOES-16 ABI and MODIS images are taken within few minutes. The “GOES-16 Ret” green reflectance values were predicted by the cloud of ANNs.

3. Results and Discussion

3.1. Validation of the ANN Green Reconstruction for GOES-16

To assess the quality of the ANN green reconstruction for GOES-16, we have considered a MODIS granule far away in time from the ANN training data set shown in Figure 8, and we focus on the red-selected area. The correlation plot drawn on the left-hand side of Figure 10 shows the excellent correlation between the native MODIS green reflectance values and the ones predicted by the cloud of ANNs over the full granule. To further illustrate the accuracy of the green reconstruction, we also present, on the same figure, the plots of the green reflectance values over the red transect. The green (original) and black (ANNs retrieval) curves are in nearly perfect agreement, illustrating that the 1 km MODIS resolution is preserved.

In Figure 11, we have drawn the correlation plots between the GOES-16 ABI and MODIS red, green, and blue reflectance values for two reprojected images over the same region of South America (Chile/Argentina) taken within few minutes. As the images do not perfectly spatially overlap, we note some spreading in the correlations for the red and blue bands that directly mirror into the spreading of the correlation of the green reflectance values. In conclusion, both Figures 10 and 11 fully validate the ANN-based green reconstruction methodology for GOES-16 ABI.

Figures 12 and 13 allow to compare the same scenes, in natural color components, as rendered by MODIS, GOES-16 ABI with our ANN reconstructed green channel, and with the GeoColor RGB composite. As MODIS has three visible wavelengths, it must approach the reality. These figures convincingly illustrate that our RGB composite faithfully reproduces the MODIS RGB colors. The matching is nearly perfect over rocks and desert areas, while we may pinpoint differences over vegetated areas, due to the lack of Bidirectional Reflectance Distribution Function (BRDF) correction effects.

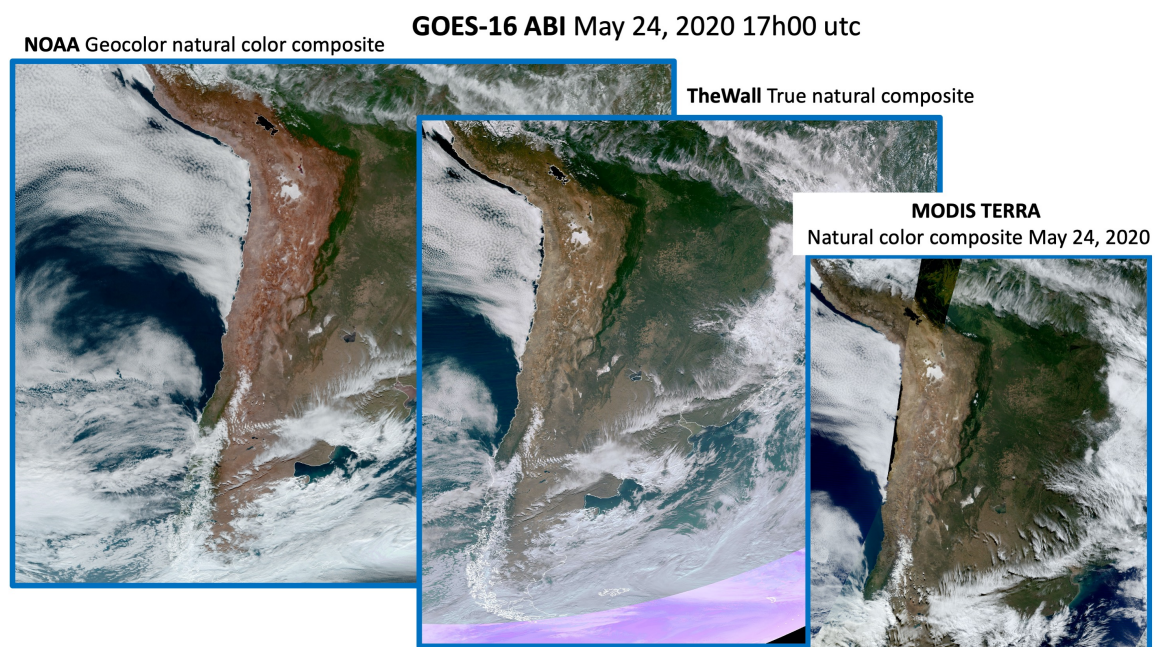


Figure 12. Comparison of our GOES-16 *true natural color* RGB composite to the *GeoColor natural color composite* and MODIS data, all taken over South America on 24 May 2020.

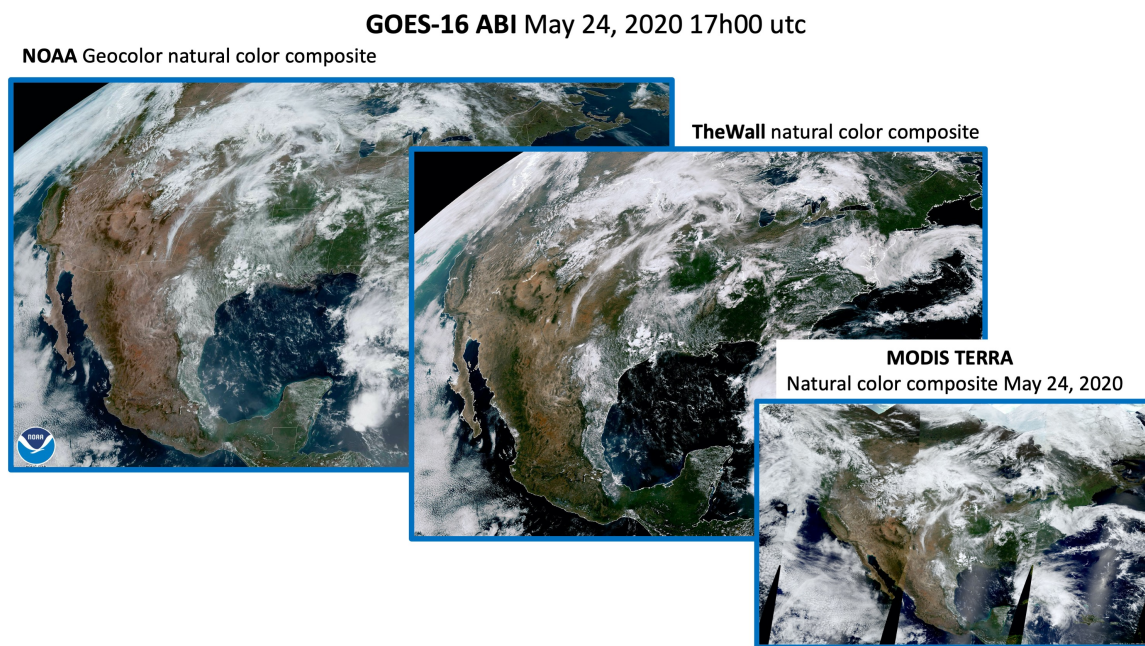


Figure 13. Comparison of our GOES-16 *true natural color* RGB composite to the *GeoColor natural color composite* and MODIS data, all taken over North America on 24 May 2020.

3.2. Description of “The Wall” Processing Chain and Web Visualization Platform

Table 2 lists the current web-based platforms that present imagery of the MSG2 SEVIRI, Himawari-8, and GOES-16 geostationary satellites. “The Wall” is the first platform to present synchronized views of these three satellites. It acquires the data of the three geostationary satellites as they are made available on the distribution platforms. The Level1B data are processed according to the flowchart in Figure 14 within a few minutes to generate all the animated global mosaics and subsets. The acquisition step uses simultaneously on three Linux-based computing nodes with 24 cores each, while the data processing is carried out on a computing node with 32 cores and 96 GB of RAM. “The Wall” web platform (<http://earth2day.com/TheWall>) homepage presents a global animation of the Earth in plate-Carree projection, in which the views of the three satellites are alive, as illustrated by the snapshot in Figure 15. The central panel is surrounded by focuses on specific Earth regions. In addition, a gallery (see Table 3) shows exceptional events and will be updated periodically. “The Wall” gives quick access to various areas of the globe, where the user can admire the dancing clouds over the equatorial regions, measure the strength of frequent immense desert sandstorms, the extent of the large forest fires, and the path of tropical storms. Being able to see the Earth alive on a wall gives us all a vision of both its finite size and its fragility.

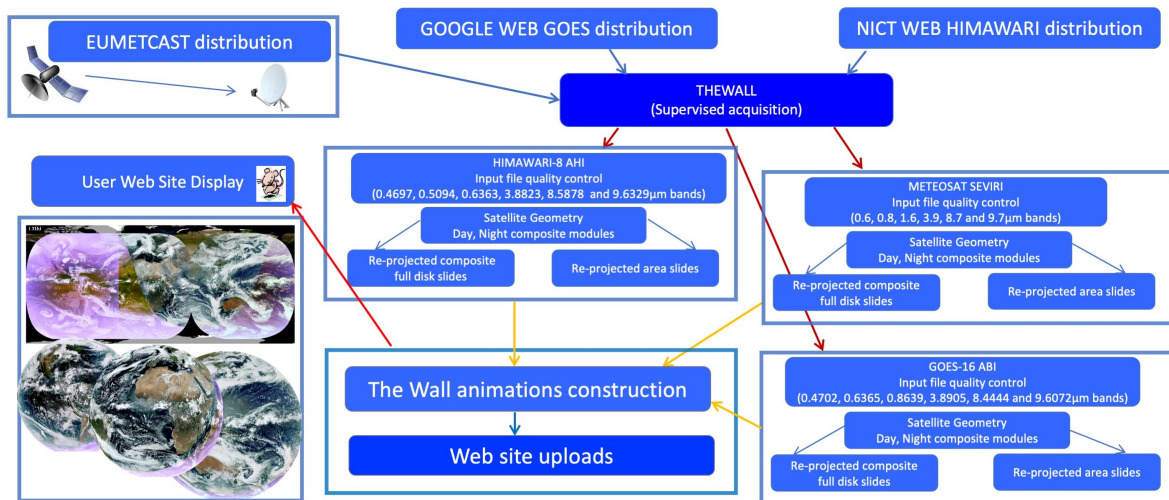


Figure 14. “The Wall” flowchart. “The Wall” system is divided in three levels. The first level is devoted to the data acquisition from the three geostationary satellites (EUMETCAST distribution, Google Cloud Platform, and the NICT Science Cloud [10,11]). The second level computes the RGB *true natural color* composites. The third one creates all the animated global mosaics and subsets.

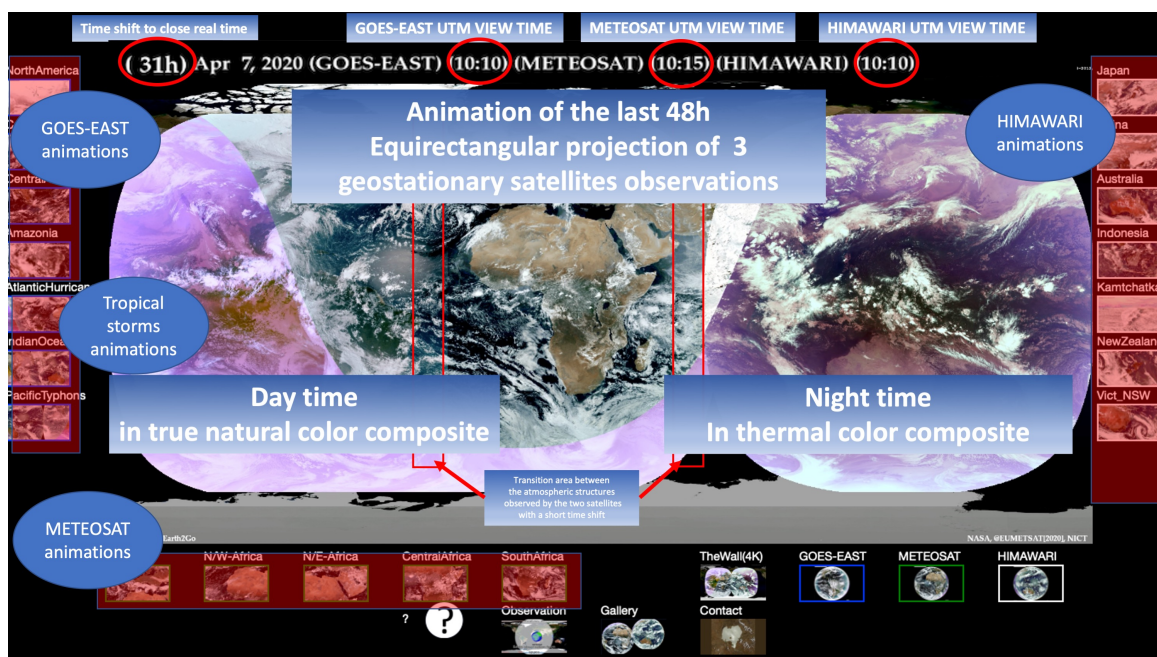


Figure 15. Snapshot of “The Wall” website at <http://earth2day.com/TheWall>.

Table 2. An incomplete list of web-based platforms for geostationary satellite imagery.

<p>GOES-16 satellite GOES-16 imagery https://www.goes-r.gov/multimedia/dataAndImageryImagesGoes-16.html#GOES-EastOperational NOAA GOES image viewer https://www.star.nesdis.noaa.gov/GOES/fulldisk.php?sat=G17</p>
<p>GOES-16 and Himawari-8 satellites SSEC Geostationary Satellite Imagery https://www.ssec.wisc.edu/data/geo/#/animation</p>
<p>Himawari-8 satellite NICT https://himawari8.nict.go.jp/ JAXA EORC https://www.eorc.jaxa.jp/ptree/index.html Meteorological Satellite Center of JMA https://www.data.jma.go.jp/mscweb/data/himawari/index.html</p>
<p>MSG2 SEVIRI ICARE https://www.icare.univ-lille.fr/data-access/browse-images/geostationary-satellites/ METEOSAT http://www.meteo-spatiale.fr/src/images_en_direct.php NASCube http://nascube.univ-lille1.fr/</p>

Table 3. List of events presented in “The Wall” gallery.

<p>Events and hyperlinks to http://earth2day.com/TheWall/Gallery/gallery.html</p>
<p>A huge sandstorm crossing the Atlantic in June 2020 http://earth2day.com/TheWall/Gallery/Movies/SANDSTORM20200611140020200620160016F.html</p>
<p>Huge fires in Canada in June 2019 http://earth2day.com/TheWall/Gallery/Movies/NORTHAMERIC2201905280000201906032355.html</p>
<p>One km accuracy image showing multiple fires in Amazonia in August 2019 http://earth2day.com/TheWall/Gallery/Movies/AMAZONI1km201908110000201908172300.html</p>
<p>Wild fires in the South East of Australia in January 2020 http://earth2day.com/TheWall/Gallery/Movies/VICT_OSW202001010000202001080700.html</p>
<p>Huge sand storm covering Australia in January 2020 http://earth2day.com/TheWall/Gallery/Movies/AUSTRALI2202001100600202001130600.html</p>
<p>Huge sand storm starting in Mongolia and crossing China toward Japan in May 2020 http://earth2day.com/TheWall/Gallery/Movies/MONGOLIASANDSTORM202005110600202005130540.html</p>

4. Conclusions and Perspectives, and “The Wall” Website

“The Wall” is the first attempt to provide an operational platform to visualize in nearly real-time all the atmospheric events occurring on our planet ($\pm 70.0^\circ$). The platform can be easily tuned to the needs of the user and can be extended to include additional algorithms, such as BRDF corrections. The ANN-based reconstruction of the missing visible bands can be implemented in a straightforward manner to postprocess any image from the geostationary archives. The system has been running for several months with minimal human maintenance. We are eagerly waiting for the launch of the next generation of METEOSAT (MTG-I) by the end of 2021, which has an onboard “Flexible Combined Imager (FCI)” instrument. This will make “The Wall” homogeneous in spatial resolution and will allow a complete synchronization of its animations.

Author Contributions: Conceptualization, methodology, software, and validation, L.G.; resources, L.G. and H.Y.; writing—review and editing, L.G. and H.Y. All authors have read and agreed to the published version of the manuscript.

Funding: This research received no external funding.

Acknowledgments: All MODIS products are courtesy of the online Data Pool at the NASA Land Processes Distributed Active Archive Center (LP DAAC), USGS/Earth Resources Observation and Science (EROS) Center, Sioux Falls, South Dakota. We wish to thank Eumetsat and Eumetcast for providing access to the MSG2 SEVIRI instrument measurements. Himawari-8 AHI data is obtained from NICT Science Cloud Himawari Satellite Project operated by the National Institute of Information and Communications Technology (NICT).

Conflicts of Interest: The authors declare no conflicts of interest.

Abbreviations

The following abbreviations are used in this manuscript.

ABI	Advanced Baseline Imager
AHI	Advanced Himawari Imager
MODIS	Moderate Resolution Imaging Spectroradiometer
MSG2 SEVIRI	Meteosat Second Generation Spinning Enhanced Visible and Infrared Imager
NICT	National Institute of Information and Communications Technology
PNC	Pseudo Night Composite
TNCC	True Natural Color Composite

References

- Schmit, T.J.; Griffith, P.; Gunshor, M.M.; Daniels, J.M.; Goodman, S.J.; Lebair, W.J. A Closer Look at the ABI on the GOES-R Series. *Bull. Am. Meteorol. Soc.* **2017**, *98*, 681–698. [CrossRef]
- Bessho, K.; Date, K.; Hayashi, M.; Ikeda, A.; Imai, T.; Inoue, H.; Kumagai, Y.; Miyakawa, T.; Murata, H.; Ohno, T.; et al. An Introduction to Himawari-8/9—Japan’s New-Generation Geostationary Meteorological Satellites. *J. Meteorol. Soc. Jpn. Ser. II* **2016**, *94*, 151–183. [CrossRef]
- Murata, H.; Saitoh, K.; Sumida, Y. True Color Imagery Rendering for Himawari-8 with a Color Reproduction Approach Based on the CIE XYZ Color System. *J. Meteorol. Soc. Jpn. Ser. II* **2018**, *96B*, 211–238. [CrossRef]
- Schmit, T.J.; Lindstrom, S.S.; Gerth, J.J.; Gunshor, M.M. Applications of the 16 Spectral Bands on the Advanced Baseline Imager (ABI). *J. Oper. Meteorol.* **2018**, *6*, 34–46. [CrossRef]
- Himawari Real-Time Image. Available online: https://www.data.jma.go.jp/mscweb/data/himawari/sat_img.php (accessed on 13 June 2020).
- Natural Colour Enhanced RGB—MSG—0 Degree. Available online: https://navigator.eumetsat.int/product/EO:EUM:DAT:MSG:NCL_ENH (accessed on 13 June 2020).
- Miller, S.D.; Schmidt, C.C.; Schmit, T.J.; Hillger, D.W. A case for natural colour imagery from geostationary satellites, and an approximation for the GOES-R ABI. *Int. J. Remote Sens.* **2012**, *33*, 3999–4028. [CrossRef]
- Miller, S.D.; Lindsey, D.T.; Seaman, C.J.; Solbrig, J.E. GeoColor: A Blending Technique for Satellite Imagery. *J. Atmos. Ocean. Technol.* **2020**, *37*, 429–448. [CrossRef]
- Gonzalez, L.; Briottet, X. North Africa and Saudi Arabia Day/Night Sandstorm Survey (NASCube). *Remote Sens.* **2017**, *9*, 896. [CrossRef]
- Murata, K.T.; Pavarangkoon, P.; Higuchi, A.; Toyoshima, K.; Yamamoto, K.; Muranaga, K.; Nagaya, Y.; Izumikawa, Y.; Kimura, E.; Mizuhara, T. A web-based real-time and full-resolution data visualization for Himawari-8 satellite sensed images. *Earth Sci. Inform.* **2018**, *11*, 217–237. [CrossRef]
- Murata, K.T.; Watanabe, H.; Ukawa, K.; Muranaga, K.; Suzuki, Y.; Yamamoto, K.; Kimura, E. A Report of the NICT Science Cloud in 2013. *J. Jpn. Soc. Inf. Knowl.* **2014**, *24*, 275–290.
- Google Cloud Platform for GOES-16 ABI. Available online: <https://console.cloud.google.com/marketplace/product/noaa-public/goes-16?pli=1> (accessed on 13 June 2020).
- Vermote, E.F.; Kotchenova, S.Y.; Tanré, D.; Deuzé, J.L.; Herman, M.; Roger, J.C.; Morcrette, J.J. 6SV Code. 2015. Available online: <http://6s.ltdri.org/2015> (accessed on 13 June 2020).
- Vermote, E.; Tanré, D. Analytical expressions for radiative properties of planar Rayleigh scattering media, including polarization contributions. *J. Quant. Spectrosc. Radiat. Transf.* **1992**, *47*, 305–314. [CrossRef]

15. Vermote, E.F.; Tanré, D.; Deuzé, J.L.; Herman, M.; Morcrette, J.-J. Second Simulation of the Satellite Signal in the Solar Spectrum, 6S: An overview. *IEEE Trans. Geosci. Remote Sens.* **1997**, *35*, 675–686. [[CrossRef](#)]
16. Shettle, E.P.; Kneizys, F.X.; Gallery, W.O. Suggested modification to the total volume molecular scattering coefficient in lowtran: Comment. *Appl. Opt.* **1980**, *19*, 2873–2874. [[CrossRef](#)]
17. Chandrasekhar, S. *Radiative Transfer*; Dover Publications, Inc.: New York, NY, USA, 1960.
18. Joseph, J.H.; Wiscombe, W.J.; Weinman, J.A. The Delta-Eddington Approximation for Radiative Flux Transfer. *J. Atmos. Sci.* **1976**, *33*, 2452–2459. [[CrossRef](#)]
19. Lenoble, J.; Herman, M.; Deuzé, J.L.; Lafrance, B.; Santer, R.; Tanré, D. A successive order of scattering code for solving the vector equation of transfer in the earth's atmosphere with aerosols. *J. Quant. Spectrosc. Radiat. Transf.* **2007**, *107*, 479–507. [[CrossRef](#)]
20. Zell, A.; Mache, N.; Hübner, R.; Mamier, G.; Vogt, M.; Schmalzl, M.; Herrmann, K.U. SNNS (Stuttgart Neural Network Simulator). In *Neural Network Simulation Environments*; Springer: Boston, MA, USA, 1994; pp. 165–186.
21. Miikkulainen, R. Topology of a Neural Network. In *Encyclopedia of Machine Learning*; Sammut, C., Webb, G.I., Eds.; Springer US: Boston, MA, USA, 2010; pp. 988–989. [[CrossRef](#)]
22. Gonzalez, L.; Vallet, V.; Yamamoto, H. Global 15-Meter Mosaic Derived from Simulated True-Color ASTER Imagery. *Remote Sens.* **2019**, *11*, 441. [[CrossRef](#)]



© 2020 by the authors. Licensee MDPI, Basel, Switzerland. This article is an open access article distributed under the terms and conditions of the Creative Commons Attribution (CC BY) license (<http://creativecommons.org/licenses/by/4.0/>).