



**HAL**  
open science

## Neuromedin U uses $G_{\alpha i2}$ and $G_{\alpha o}$ to suppress glucose-stimulated $Ca^{2+}$ signaling and insulin secretion in pancreatic $\beta$ cells.

Weidong Zhang, Hideyuki Sakoda, Yuki Nakazato, Md Nurul Islam, Francois Pattou, Julie Pattou Kerr-Conte, Masamitsu Nakazato

### ► To cite this version:

Weidong Zhang, Hideyuki Sakoda, Yuki Nakazato, Md Nurul Islam, Francois Pattou, et al.. Neuromedin U uses  $G_{\alpha i2}$  and  $G_{\alpha o}$  to suppress glucose-stimulated  $Ca^{2+}$  signaling and insulin secretion in pancreatic  $\beta$  cells.. PLoS ONE, 2021, PLoS ONE, 16 (4), pp.e0250232. 10.1371/journal.pone.0250232 . hal-04737978

HAL Id: hal-04737978

<https://hal.univ-lille.fr/hal-04737978v1>

Submitted on 15 Oct 2024

**HAL** is a multi-disciplinary open access archive for the deposit and dissemination of scientific research documents, whether they are published or not. The documents may come from teaching and research institutions in France or abroad, or from public or private research centers.

L'archive ouverte pluridisciplinaire **HAL**, est destinée au dépôt et à la diffusion de documents scientifiques de niveau recherche, publiés ou non, émanant des établissements d'enseignement et de recherche français ou étrangers, des laboratoires publics ou privés.



Distributed under a Creative Commons Attribution 4.0 International License

## RESEARCH ARTICLE

# Neuromedin U uses $G\alpha_{i2}$ and $G\alpha_o$ to suppress glucose-stimulated $Ca^{2+}$ signaling and insulin secretion in pancreatic $\beta$ cells

Weidong Zhang<sup>1</sup>, Hideyuki Sakoda<sup>1</sup>, Yuki Nakazato<sup>1</sup>, Md Nurul Islam<sup>1</sup>, François Pattou<sup>2</sup>, Julie Kerr-Conte<sup>2</sup>, Masamitsu Nakazato<sup>1,3\*</sup>

**1** Division of Neurology, Respiriology, Endocrinology and Metabolism, Department of Internal Medicine, Faculty of Medicine, University of Miyazaki, Miyazaki, Japan, **2** UNIV. LILLE, INSERM, CHU LILLE, U1190, Translational Research Laboratory for Diabetes -European Genomics Institute for Diabetes, Lille, France, **3** AMED-CREST, Agency for Medical Research and Development, Tokyo, Japan

\* [nakazato@med.miyazaki-u.ac.jp](mailto:nakazato@med.miyazaki-u.ac.jp)



## OPEN ACCESS

**Citation:** Zhang W, Sakoda H, Nakazato Y, Islam MN, Pattou F, Kerr-Conte J, et al. (2021) Neuromedin U uses  $G\alpha_{i2}$  and  $G\alpha_o$  to suppress glucose-stimulated  $Ca^{2+}$  signaling and insulin secretion in pancreatic  $\beta$  cells. PLoS ONE 16(4): e0250232. <https://doi.org/10.1371/journal.pone.0250232>

**Editor:** Clemens Fürnsinn, Medical University of Vienna, AUSTRIA

**Received:** January 8, 2021

**Accepted:** April 2, 2021

**Published:** April 15, 2021

**Copyright:** © 2021 Zhang et al. This is an open access article distributed under the terms of the [Creative Commons Attribution License](https://creativecommons.org/licenses/by/4.0/), which permits unrestricted use, distribution, and reproduction in any medium, provided the original author and source are credited.

**Data Availability Statement:** All relevant data are within the manuscript.

**Funding:** This study was supported in part by grants from the Japan Society for the Promotion of Science (JSPS) KAKENHI (16H05333 to M. N.) and the Agency for Medical Research and Development-Core Research for Evolutional Science and Technology (AMED-CREST) (JP19gm0610016 to M. N.). This study was also supported in part by grants from the Japan

## Abstract

Neuromedin U (NMU), a highly conserved peptide in mammals, is involved in a wide variety of physiological processes, including impairment of pancreatic  $\beta$ -cell function via induction of mitochondrial dysfunction and endoplasmic reticulum (ER) stress, ultimately suppressing insulin secretion. NMU has two receptors, NMU receptor 1 (NMUR1) and NMUR2, both of which are G-protein-coupled receptors (GPCRs). Only NMUR1 is expressed in mouse islets and  $\beta$  cell-derived MIN6-K8 cells. The molecular mechanisms underlying the insulinostatic action mediated by NMUR1 in  $\beta$  cells have yet to be elucidated. In this study, we explored the molecular mechanism driving impairment of insulin secretion in  $\beta$  cells by the NMU-NMUR1 axis. Pretreatment with the  $G\alpha_{i/o}$  inhibitor *Bordetella pertussis* toxin (PTX), but not the  $G\alpha_q$  inhibitor YM254890, abolished NMU-induced suppression of glucose-stimulated insulin secretion and calcium response in  $\beta$  cells. Knockdown of  $G\alpha_{i2}$  and  $G\alpha_o$  in  $\beta$  cells counteracted NMU-induced suppression of insulin secretion and gene alterations related to mitochondrial fusion (*Mfn1*, *Mfn2*), fission (*Fis1*, *Drp1*), mitophagy (*Pink1*, *Park2*), mitochondrial dynamics (*Pgc-1 $\alpha$* , *Nrf1*, and *Tfam*), ER stress (*Chop*, *Atp2a3*, *Ryr2*, and *Itpr2*), intracellular ATP level, and mitochondrial membrane potential. NMU decreased forskolin-stimulated intracellular cAMP in both mouse and human islets. We concluded that NMUR1 coupled to PTX-sensitive  $G\alpha_{i2}$  and  $G\alpha_o$  proteins in  $\beta$  cells reduced intracellular  $Ca^{2+}$  influx and cAMP level, thereby causing  $\beta$ -cell dysfunction and impairment. These results highlight a novel signaling mechanism of NMU and provide valuable insights into the further investigation of NMU functions in  $\beta$ -cell biology.

## Introduction

Pancreatic  $\beta$  cells, the predominant cell type within the pancreatic islets of mammals, are the sole source of circulating insulin. Beta-cell function and maintenance are regulated by a complex set of interacting factors and involve autocrine, paracrine, and humoral signaling [1–3].

foundation for applied enzymology (Front Runner of Future Diabetes Research associated research grant, FFDR 2020 to W.Z.).

**Competing interests:** The authors have declared that no competing interests exist.

The regulatory network that controls glucose-stimulated insulin secretion (GSIS) is multifactorial and complicated. A number of G-protein-coupled receptors (GPCRs) and peptides produced in  $\beta$  cells participate in the regulation of insulin secretion and islet homeostasis [4]. Beta cell-derived peptides such as amylin, cholecystokinin, gastrin, oxytocin, and xenin enhance GSIS, whereas urocortin-3 suppresses it [3, 5].

Neuromedin U (NMU) is a 23–25-amino acid peptide isolated from the spinal cord, named for its contractile effect on the rat uterus [6, 7]. NMU has emerged as a new player in the regulation of appetite control and energy and glucose homeostasis [8–10]. NMU has two cognate GPCRs: NMU receptor 1 (NMUR1), which is expressed predominantly in peripheral tissues, and NMUR2, which is expressed abundantly in the central nervous system [9, 10]. NMU and NMUR1 are expressed in pancreatic islets of mice, rats, and humans, whereas NMUR2 is not [11–14]. NMU produced in  $\beta$  cells suppresses insulin secretion and causes  $\beta$ -cell failure by inducing mitochondrial dysfunction and endoplasmic reticulum (ER) stress [11, 14, 15]. These observations suggest that NMU directly regulates  $\beta$ -cell function and maintenance via NMUR1.

GPCRs propagate signals in cells through heterotrimeric G-proteins, which consist of  $\alpha$ -,  $\beta$ -, and  $\gamma$ -subunits. Upon ligand binding, GPCRs and heterotrimeric G-proteins change their conformation and transduce signals inside cells, linking membrane receptor activation to intracellular effectors [16].  $G\alpha$ , the major determinant of GPCR specificity, has four subfamilies:  $G\alpha_s$ ,  $G\alpha_q$ ,  $G\alpha_{12/13}$ , and  $G\alpha_{i/o}$  [17, 18]. All types of  $G\alpha$  proteins are expressed in  $\beta$  cells and are involved in the regulation of insulin secretion [19]. For normal  $\beta$  cells, somatostatin and ghrelin activate  $G\alpha_{i/o}$  proteins to inhibit adenosine cAMP production, thereby suppressing insulin secretion [20, 21]; Glucagon-like peptide-1 activates  $G\alpha_s$  to stimulate adenosine cAMP production, and cholecystokinin activates  $G\alpha_q$  to increase intracellular  $Ca^{2+}$  influx; both cAMP and  $Ca^{2+}$  stimulate insulin secretion [22, 23].

NMUR1 mainly conducts  $G\alpha_q$  signals, whereas NMUR2 mainly acts in the  $G\alpha_i$  pathway. These findings were obtained using non- $\beta$ -cell lines with ectopic overexpression of NMUR1 or NMUR2 [24–26]. Early work revealed that GPCRs are promiscuous in terms of G-protein coupling [27]. Several studies revealed that individual GPCRs can bind to different G-proteins in different tissues. For example, in  $\beta$  cells, the Class B GPCR glucagon receptor binds to both  $G\alpha_s$  and  $G\alpha_q$  proteins [4], but also binds to  $G\alpha_{i/o}$  to regulate calcium signaling in HEK293 cells and mediate cAMP accumulation in canine hepatocytes [28, 29]. In mouse dorsal root ganglia neurons, NMUR1 binds to  $G\alpha_{i/o}$  to inhibit the T-type  $Ca^{2+}$  channel current via the PKA signaling pathway, whereas in mouse hippocampal neurons this interaction inhibits the L-type  $Ca^{2+}$  channel current via the PI3K–PKC signaling pathway [30, 31]. Given that NMUR1, but not NMUR2, is expressed in  $\beta$  cells, and NMU suppresses intracellular calcium mobilization and insulin secretion, we hypothesized that NMUR1 might use  $G\alpha_{i/o}$  for signal transduction in  $\beta$  cells. Using  $\beta$  cell-derived MIN6-K8 cells, isolated mouse and human islets, and single islet cells, we identified the molecular mechanisms by which NMU and NMUR1 regulate insulin secretion in  $\beta$  cells.

## Materials and methods

### Animals, cell culture, and islet isolation

C57BL/6 J wild-type mice (9-week-old male, Charles River Laboratories Japan, Yokohama, Japan) were maintained in individual cages under a 12-h/12-h light–dark cycle (light on 08:00–20:00) at controlled temperatures (21–23°C). Animals were fed standard rodent chow pellets with water *ad libitum*. All animal experiments were approved by the Animal Care and Use Committee of University of Miyazaki and complied with the guidelines of

Japanese Physiological Society for the care and use of laboratory animals at University of Miyazaki.

MIN6-K8 cells [32] were cultured at 37 °C under 5% CO<sub>2</sub> in Dulbecco's modified Eagle's medium (DMEM) supplemented with 10% heat-inactivated fetal bovine serum (FBS) (Thermo Fisher Scientific, Waltham, MA, USA; Cat. No.10270-106) and 1% penicillin–streptomycin (Wako, Osaka, Japan, cat No: 168–23191).

Pancreatic islets were isolated from C57BL/6J mice by a modified collagenase digestion method [33]. A combination anesthetic was prepared, consisting of 0.3 mg/kg of medetomidine, 4.0 mg/kg of midazolam, and 5.0 mg/kg of butorphanol, and administered to mice by intraperitoneal injection. After anesthesia and sacrifice, the pancreas was cut into small pieces by mincing with scissors for approximately 1 min. The minced tissue was incubated in 10 ml Collagenase P (1 mg/ml in HBSS, Roche Diagnostics) for 15 min in a 37 °C water bath. After addition of 30 ml of cold HBSS, the tube was shaken by hand for 60 s until it appeared homogeneous. The sample was centrifuged for 2 min at 112 rcf, and the pellet was washed twice with cold HBSS. The pellet was resuspended in RPMI supplemented with 10% FBS and 1% penicillin–streptomycin. Isolated pancreatic islets were picked under a stereomicroscope using an Eppendorf pipette. Before experiments were performed, islets were incubated overnight at 37 °C under 5% CO<sub>2</sub> in RPMI or dispersed into single cells by 10-min incubation at 37 °C with 0.25% trypsin. Dispersed islet cells were incubated in RPMI for up to 2 days at 37 °C before use.

Human pancreatic islets isolated from cadaveric heart beating donors as previously described [34], after next-of-kin consent, were kindly provided by the University Hospital of Lille via the European Consortium for Islet Transplantation (ECIT) human islet distribution program supported by the Juvenile Diabetes Research Foundation (JDRF). The use of human specimens for research and exportation of human islets was granted respectively by the French Ministry of Higher Education and Research and the Agence de la biomédecine. Islet purity was assessed as the percentage of endocrine clusters positive to dithizone staining (range: 80–90%). Human pancreata were harvested from adult brain-deceased donors in agreement with the French Regulations and with our Institutional Ethical Committee (« Comité d'Ethique du Centre Hospitalier Régional et Universitaire de Lille »). France has presumed consent legislation in place for deceased donors. Human islet preparations insufficient in number for clinical transplantation can be used for research when consent for RESEARCH donation has been given (NOTE: Informed consent from the next of kin, is obtained on the behalf of the deceased by the National French Procurement Agency « Agence de la biomédecine ». Consent was verbal. In France it is presumed that you agree to organ donation unless you have expressed your refusal in the « RNR: Registre National de Refus » (National Registry for Refusal of organ donation). The Agence de la biomédecine Coordinators ask for verbal consent and then consult the RNR (ie written refusal). Therefore the written refusal is based on the RNR (Registre National de Refus: National Registry for Refusal of organ donation). Documentation of the process: The Agence de la biomédecine has standardized procedure applicable nationally for Coordinators to assure that the informed consent procedure is identical throughout France.). No minors were used.

### In vitro insulin secretion assay

MIN6-K8 cells, seeded at  $1 \times 10^5$  cells/well in 48-well plates, were pre-incubated for 30 min in Henseleit–Krebs–Ringer buffer (HKRB, 119 mM NaCl, 4.74 mM KCl, 2.54 mM CaCl<sub>2</sub>, 1.19 mM MgCl<sub>2</sub>, 1.19 mM KH<sub>2</sub>PO<sub>4</sub>, 25 mM NaHCO<sub>3</sub>, 10 mM HEPES, pH 7.4) supplemented with 0.2% bovine serum albumin and 2.8 mM glucose. The cells were then incubated for 30 min in

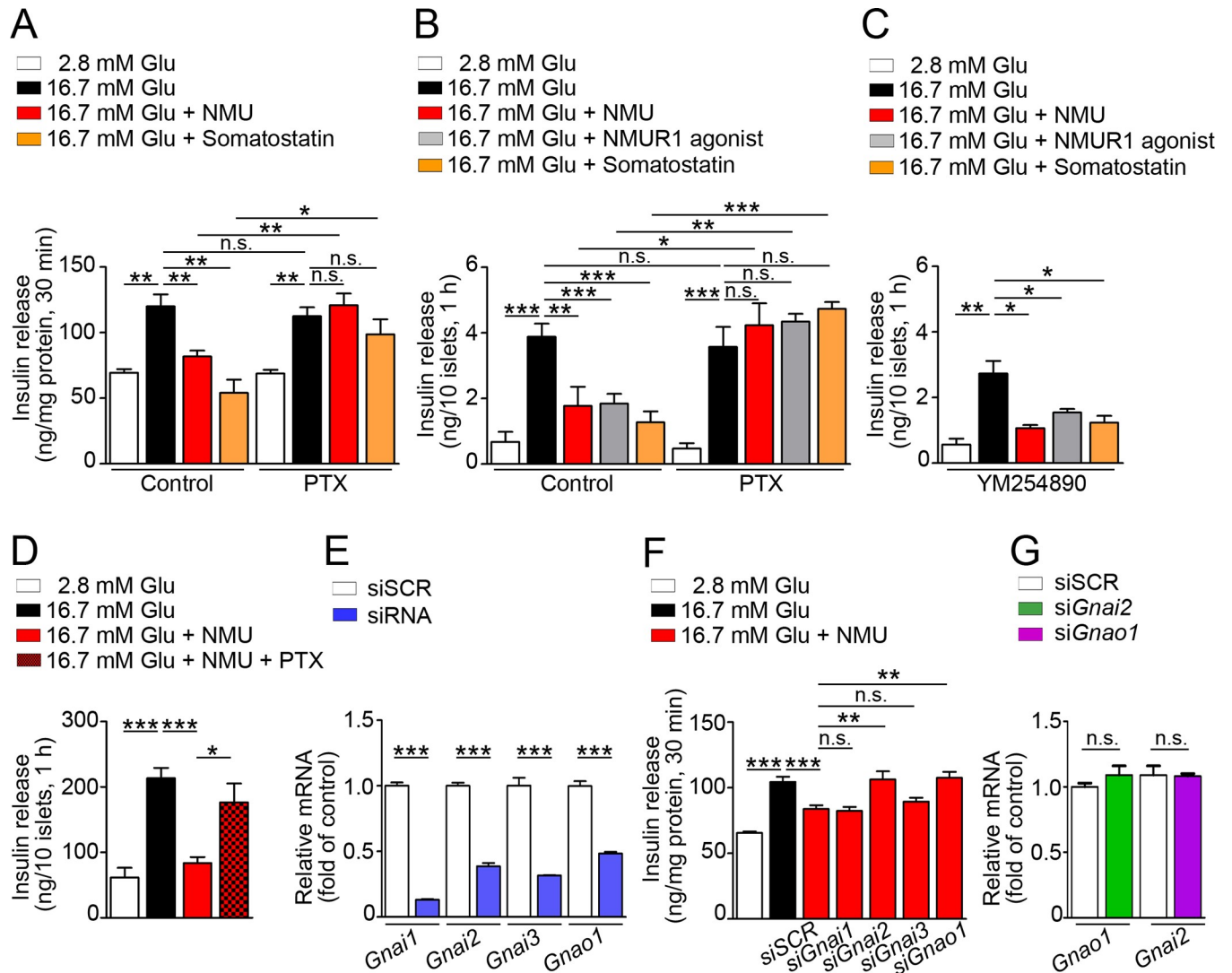
HKRB containing 2.8 mM or 16.7 mM glucose, with or without mouse NMU (100 nM) (NMU-23, Peptide Institute, Osaka, Japan) and somatostatin (100 nM) (Peptide Institute). In islet experiments, groups of ten individually size-matched islets were collected for GSIS assays. One hour after pre-incubation with HKRB containing 2.8 mM glucose, islets were incubated for 1 h under the same conditions as for MIN6-K8 cells described above, with or without mouse NMU, NMUR1 agonist 6a (1  $\mu$ M) (kindly provided by Takayama) [11], human NMU (100 nM) (NMU-25, Peptide Institute), and somatostatin (Peptide Institute). Mouse NMU was used in experiments with mouse islets and MIN6-K8 cells, and human NMU in experiments with human islets. MIN6-K8 cells or islets were pre-incubated with *Bordetella pertussis* toxin (PTX) (100 ng/mL, List Biological Laboratories, Campbell, CA, USA) overnight, and islets were pre-incubated with YM254890 (1  $\mu$ M, Wako) for 10 min before use. Somatostatin was used as a positive control to suppress GSIS and provide a reliable experimental setting (Fig 1A–1C).

### Short interfering RNA (siRNA) transfection

Mouse Silencer® Select Pre-designed siRNAs s66788 (*Gnai1*), s66789 (*Gnai2*), s66794 (*Gnai3*), and s66800 (*Gnao1*) (Thermo Fisher Scientific, Waltham, MA, USA) were transfected into MIN6-K8 cells using Lipofectamine RNAiMAX Transfection Reagent (Invitrogen, Carlsbad, CA, USA). Control siRNA was Silencer Select–scrambled control siRNA #1 (Thermo Fisher Scientific, Cat. No. 4390843). The cells were treated for 48 h with siRNA or scrambled control siRNA (siSCR), and then subjected to GSIS and measurements of mRNA, mitochondrial membrane potential, and intracellular ATP. In the siRNA knockdown experiments performed to investigate inhibition of signaling and driving effects on insulin secretion (experiments in Fig 1E and 1F), mitochondrial membrane potential (experiment in Fig 4E and 4F), and intracellular ATP (experiment in Fig 1G), we always prepared experimental sets at the same time, in parallel, to confirm the mRNA knockdown efficacy before using the associated findings. In the siRNA knockdown experiments performed to investigate gene expressions related to mitochondrial dynamics (Fig 4A), ER stress (Fig 4B), mitochondrial biogenesis (Fig 4C), and ER calcium channels (Fig 4D), we always confirmed mRNA knockdown efficacy using same samples before investigating other related genes.

### Quantitative RT-PCR (qRT-PCR)

mRNA levels of genes in MIN6-K8 cells were determined 24 h after NMU administration with or without knockdown of *Gnai1*, *Gnai2*, *Gnai3*, or *Gnao1*. Total RNA was purified using the RiboPure Kit (Invitrogen). qRT-PCR was conducted using the TaqMan Fast Universal PCR Master Mix (Thermo Fisher Scientific) on a Thermal Cycler Dice Real-Time System II (Takara Bio, Kusatsu, Japan). Reactions were performed using commercially available primers for the following mouse genes (Thermo Fisher Scientific): *Gnai1*, Mm01165301\_m1; *Gnai2*, Mm00492379\_g1; *Gnai3*, Mm00802670\_m1; *Gnao1*, Mm00494677\_m1; *Pgc-1 $\alpha$* , Mm01208835\_m1; *Nrf1*, Mm01135606\_m1; *Tfam*, Mm00447485\_m1; *Mfn1*, Mm00612599\_m1; *Mfn2*, Mm00500120\_m1; *Fis1*, Mm00481580\_m1; *Dnm1l (Drp1)*, 01342903\_m1; *Pink1*, Mm00550827\_m1; *Park2*, Mm00450187\_m1; *Ddit3 (Chop)*, Mm01135937\_g1; *Atp2a3* (sarco/endoplasmic reticulum  $Ca^{2+}$ -ATPase: SERCA3), Mm00443898\_m1; *Ryr2* (ryanodine receptor 2: RyR2), Mm00465877\_m1; *Itpr2* (inositol triphosphate receptor 2: IP3R2); and *Gapdh*, Mm99999915\_g1. Relative mRNA levels were calculated by normalizing against the level of an internal reference gene (*Gapdh*) in the same sample.



**Fig 1. Involvement of  $G\alpha_{i/o}$  signaling in NMU-suppressed GSIS.** Insulin secretion from MIN6-K8 cells (A) ( $n = 4$ ), isolated mouse islets (B, C) ( $n = 4$ ), and human islets (D) ( $n = 4$ ) with or without PTX or YM254890 pretreatment. (E) Efficacy of  $G\alpha_{i/o}$  knockdown in MIN6-K8 cells ( $n = 4$ ). (F) NMU-induced suppression of GSIS after  $G\alpha_{i/o}$  knockdown in MIN6-K8 cells ( $n = 4$ ). (G) mRNA levels of *Gnao1* or *Gnai2* in MIN6-K8 cells after respective knockdown of *Gnai2* or *Gnao1* ( $n = 4$ ). \* $P < 0.05$ , \*\* $P < 0.01$ , \*\*\* $P < 0.001$ . n.s., not significant.

<https://doi.org/10.1371/journal.pone.0250232.g001>

### Measurement of intracellular cAMP

Mice or human islets were pre-incubated for 1 h at 37°C with HKRB containing 2.8 mM glucose and 250  $\mu$ M PDE inhibitor 3-isobutyl-1-methylxanthine (IBMX, Sigma-Aldrich, St. Louis, MO, USA). Groups of 10 individually size-matched islets were then treated for 1 h with forskolin (10 nM, Sigma-Aldrich) under 16.7 mM glucose, with or without mouse NMU (Peptide Institute), human NMU (Peptide Institute), or somatostatin (Peptide Institute). After incubation, the islets were lysed ultrasonically, and cAMP concentration was measured using the cAMP Biotrak Enzymeimmunoassay system (GE Healthcare, Chicago, IL, USA).

### Measurement of intracellular $Ca^{2+}$ ( $[Ca^{2+}]_i$ ) with Fura-2

MIN6-K8 cells and dispersed single islet cells were cultured in 35-mm culture plates (Becton Dickinson Labware, Franklin Lakes, NJ, USA). Cells were loaded with 1  $\mu$ M Fura-2

acetoxymethyl ester (Fura-2-AM, Dojindo, Kumamoto, Japan) in HKRB for 30 min at 37°C. Culture plates were placed on the stage of an integrated fluorescence microscope (BZ-X700, Keyence, Osaka, Japan). Images were captured at 10-s intervals; 340- and 380-nm excitation filters were used for Fura-2-AM dual-wavelength excitation-ratio imaging. For  $[Ca^{2+}]_i$  measurements, the medium was replaced with HKRB containing 2.8 or 16.7 mM glucose with or without mouse NMU (Peptide Institute), ghrelin (Peptide Institute), or somatostatin (Peptide Institute). The fluorescence ratio was recorded for 17 min. At the end of each experiment, cells were exposed to 25 mM KCl for 2 min. Single islet cells exhibiting significant increases in  $[Ca^{2+}]_i$  under 16.7 mM glucose were analyzed as previously reported for  $\beta$  cells [21, 35]. All data were expressed as percent changes relative to average fluorescence ratio in 2.8 mM glucose. Somatostatin was used as a positive control to provide reliable experimental setting (Fig 3C and 3D).

### Analysis of mitochondrial membrane potential

MIN6-K8 cells were cultured in 35-mm culture plates ( $2 \times 10^6$  in 2 mL DMEM) for 20 h after siRNA transfection, and then stimulated with NMU (100 nM) in 16.7 mM glucose for 30 min. They were incubated with 100 nM tetramethylrhodamine ethyl ester (TMRE Mitochondrial Membrane Potential Assay Kit; Abcam, Cambridge, UK) for 20 min at 37°C. Cells were imaged on a BZ-X700 fluorescence microscope. Mitochondrial membrane potential was measured using a bandpass filter with excitation at 549 nm and emission at 575 nm. Short-exposure confocal images were analyzed using ImageJ using the mean fluorescence intensities of arbitrary regions.

### Quantification of ATP content

After siRNA transfection, MIN6-K8 cells were resuspended and seeded at  $1 \times 10^5$  cells/well in 24-well plates and cultured for 20 h before use. After pre-incubation with 2.8 mM glucose for 30 min, they were incubated for 1 h at 37°C in HKRB buffer containing 2.8 mM or 16.7 mM glucose with or without NMU (100 nM). The cells were then lysed, and ATP content was determined using a colorimetric/fluorometric assay kit (Bio Vision, Milpitas, CA, USA).

### Statistical analyses

Statistical analyses were performed by one-way ANOVA for multiple comparisons, or unpaired *t*-test for comparisons of two mean values. All data are expressed as means  $\pm$  SEM.  $P < 0.05$  was considered statistically significant.

## Results

### NMU suppresses GSIS in both mouse and human islets in a PTX-sensitive manner

To investigate the role of  $G\alpha_{i/o}$  in NMU signaling in pancreatic  $\beta$  cells, we studied GSIS after overnight exposure to PTX. Somatostatin, which suppressed GSIS, was used as a positive control to confirm experimental conditions. NMU suppressed GSIS under high glucose in both MIN6-K8 cells and isolated mouse islets, and PTX abolished NMU-induced suppression of GSIS (Fig 1A and 1B). NMUR1 agonist yielded similar results to those obtained with NMU (Fig 1B). Pre-treatment with the  $G\alpha_q$  inhibitor YM254890 had no effect on NMU- or NMUR1 agonist-induced suppression of GSIS (Fig 1C). PTX also abolished NMU-induced suppression of GSIS in isolated human islets (Fig 1D). To determine which subfamily of  $G\alpha_{i/o}$  was responsible for NMUR1 signaling, we studied GSIS after mRNA knockdown of four  $G\alpha_{i/o}$  proteins in

MIN6-K8 cells (Fig 1E). Knockdown of *Gnai2* ( $G\alpha_{i2}$  protein) or *Gnao1* ( $G\alpha_o$  protein) abolished NMU-induced suppression of GSIS (Fig 1F). Knockdown of *Gnai2* did not affect the mRNA level of *Gnao1*, and vice versa (Fig 1G).

### NMU decreases intracellular cAMP under high glucose

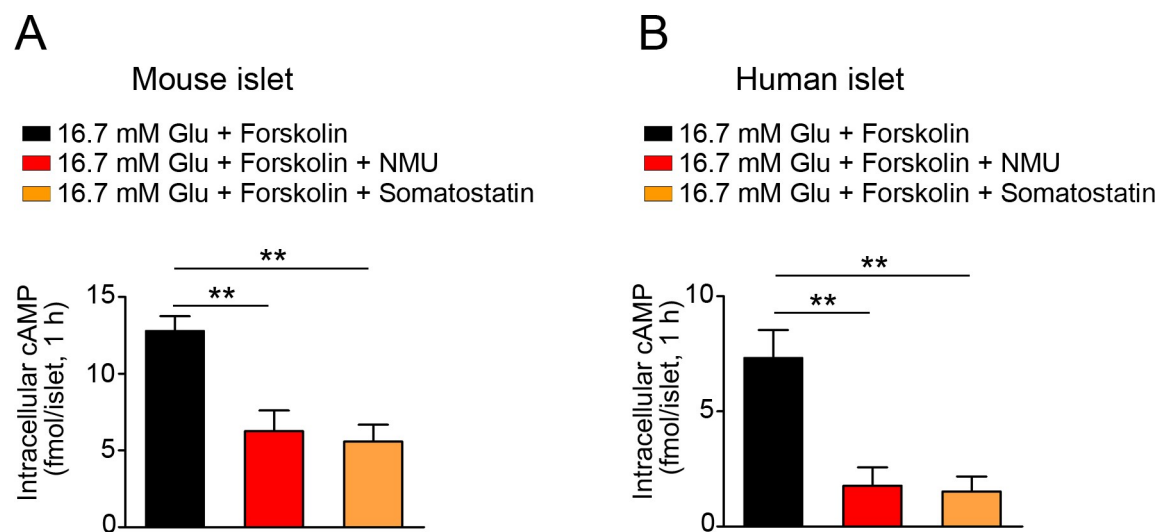
To determine whether NMU reduces intracellular cAMP, we stimulated intracellular cAMP production in islets with forskolin under high glucose. NMU significantly decreased forskolin-stimulated intracellular cAMP levels in both mouse and human islets (Fig 2A and 2B). Somatostatin also decreased intracellular cAMP levels in islets from both species (Fig 2A and 2B).

### NMU suppresses an increase in $[Ca^{2+}]_i$ via $G\alpha_{i/o}$ -dependent pathway

NMU suppressed  $[Ca^{2+}]_i$  in dispersed mouse  $\beta$  cells under high glucose; this effect was abolished by pre-treatment with PTX but not YM254890 (Fig 3A and 3B). Both ghrelin and somatostatin also suppressed  $[Ca^{2+}]_i$  under the settings of these experiments (Fig 3C and 3D).

### Knockdown of *Gnai2* or *Gnao1* restores NMU-induced alterations related to mitochondrial function and ER stress

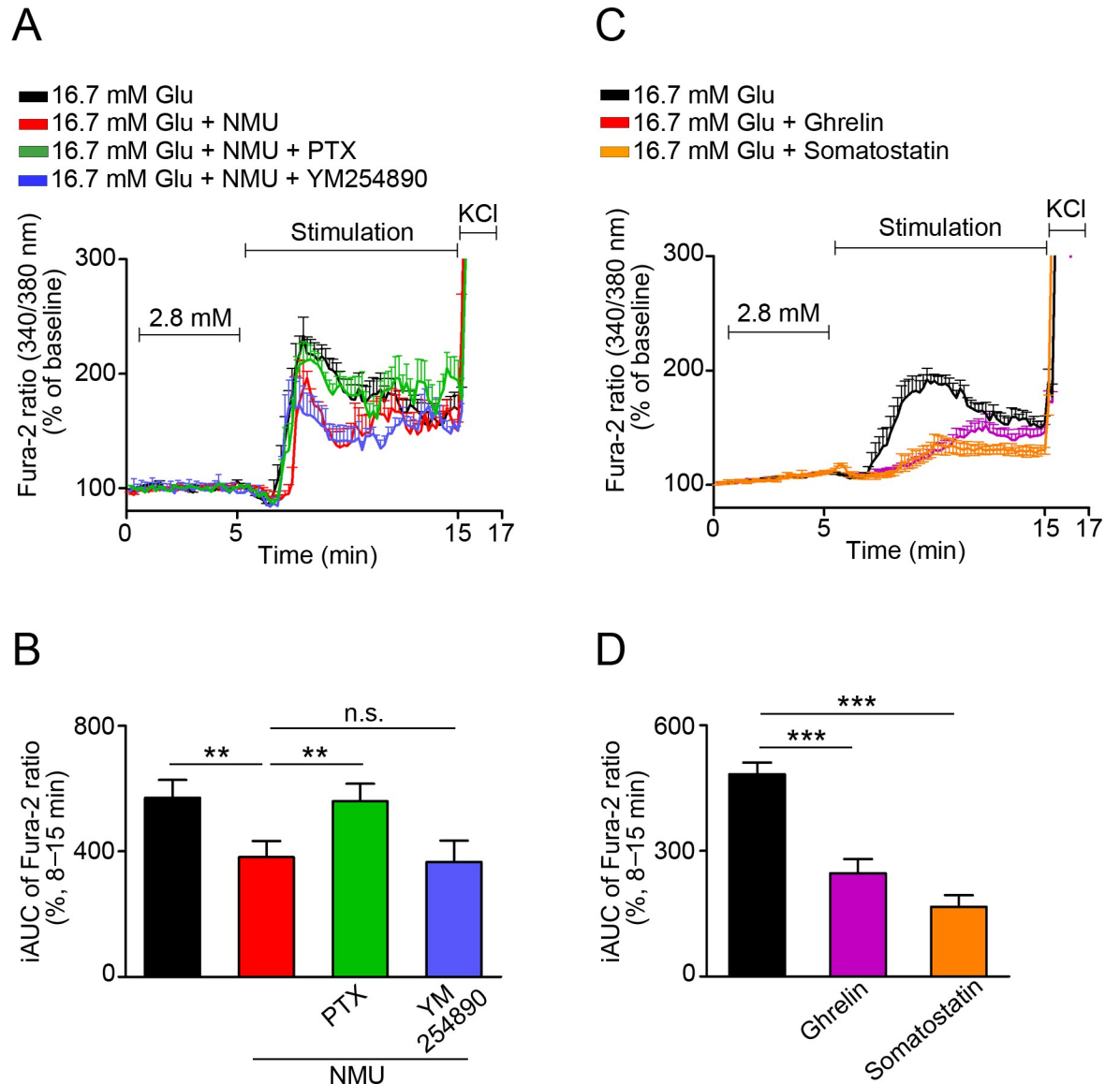
Next, we assessed the roles of  $G\alpha_{i2}$  and  $G\alpha_o$  in NMU-induced mitochondrial dysfunction and ER stress. In MIN6-K8 cells, NMU significantly decreased the expression of genes related to mitochondrial fusion (*Mfn1*, *Mfn2*), fission (*Fis1*, *Drp1*), and mitophagy (*Pink1*, *Park2*), and expression levels of all of these genes were restored by knockdown of either *Gnai2* or *Gnao1* (Fig 4A). *Gnai2* or *Gnao1* knockdown decreased the expression level of the ER stress marker *Chop*, which was upregulated by NMU administration (Fig 4B). NMU significantly reduced *Pgc-1 $\alpha$* , *Nrf1*, and *Tfam*, genes involved in mitochondrial biogenesis, whereas *Gnai2* or *Gnao1* knockdown significantly upregulated these genes (Fig 4C). Key players in ER  $Ca^{2+}$  regulation, including *Atp2a3* (SERCA3), *Ryr2* (RyR2), and *Itpr2* (IP3R2) were downregulated by NMU treatment (Fig 4D). Knockdown of *Gnai2* or *Gnao1* also restored expression of these genes to the same levels as in siSCR-treated samples (Fig 4D). Use of the TMRE probe revealed that administration of NMU to MIN6-K8 cells resulted in a significant reduction of mitochondrial



**Fig 2. Effects of NMU on intracellular cAMP production.** Intracellular cAMP levels in mouse islets (A) ( $n = 4$ ) and human islets (B) ( $n = 4$ ) with or without NMU or somatostatin treatment under 16.7 mM glucose.  $**P < 0.01$ .

<https://doi.org/10.1371/journal.pone.0250232.g002>





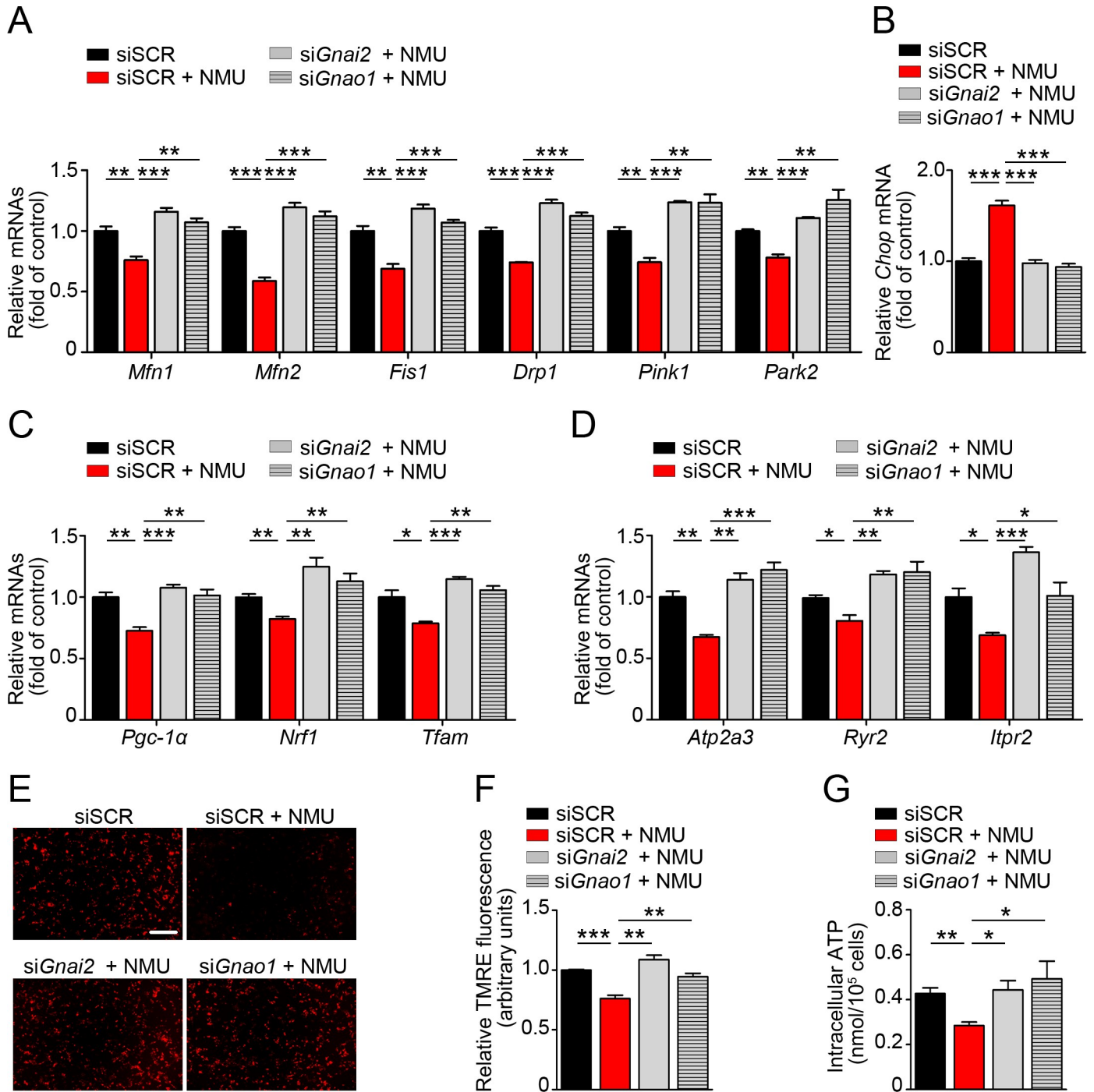
**Fig 3. Effects of NMU on  $[Ca^{2+}]_i$  in  $\beta$  cells.** (A, C) Representative Fura-2-AM ratios in dispersed mouse  $\beta$  cells in response to NMU with PTX or YM254890 (A),  $\beta$  cell-derived MIN6-K8 cells in response to ghrelin or somatostatin (C). (B, D) Average incremental AUC (iAUC) (8–15 min) for  $[Ca^{2+}]_i$  in (A) and (C), respectively ( $n = 16$ ).  $**P < 0.01$ ,  $***P < 0.001$ . n.s., not significant.

<https://doi.org/10.1371/journal.pone.0250232.g003>

inner membrane potential, suggesting that NMU induced inefficiency in the mitochondrial electron transport chain, whereas *Gnai2* or *Gnao1* knockdown rescued membrane potential (Fig 4E and 4F). NMU significantly decreased glucose-stimulated intracellular ATP level in MIN6-K8 cells; again, this effect was abolished by knockdown of *Gnai2* or *Gnao1* (Fig 4G).

### Discussion

We previously reported that NMU produced in  $\beta$  cells suppresses GSIS and causes  $\beta$ -cell failure via NMUR1 [11, 15]. NMU was upregulated both after chronic palmitate treatment and in diabetic *db/db* mice islets, and then participated in  $\beta$ -cell dysfunction and development of diabetic pathogenesis via induction of mitochondrial dysfunction and ER stress [15]. However,



**Fig 4. Effects of *Gnai2* and *Gnao1* knockdown on NMU-induced alterations related to mitochondrial function and ER stress in MIN6-K8 cells.** (A) mRNAs related to mitochondrial dynamics (n = 4). (B) *Chop* mRNA (n = 4). (C) *Pgc-1 $\alpha$* , *Nrf1*, and *Tfam* mRNAs (n = 4). (D) *Atp2a3*, *Ryr2*, and *Itpr2* mRNAs (n = 4). (E, F) Mitochondrial membrane potential determined by TMRE staining (n = 4). (G) Intracellular ATP level (n = 4). \**P* < 0.05, \*\**P* < 0.01, \*\*\**P* < 0.001.

<https://doi.org/10.1371/journal.pone.0250232.g004>

the downstream signal transduction of NMUR1 in  $\beta$  cells has not been elucidated. In this study, we showed that NMUR1 in  $\beta$  cells uses  $G\alpha_{i/o}$  signaling to mediate the detrimental effects of NMU on insulin secretion. Upon NMU binding, NMUR1 preferentially activates  $G\alpha_{i2}$  and

$G\alpha_o$ , leading to inhibition of intracellular calcium and cAMP level, which in turn suppresses insulin secretion.

The involvement of  $G\alpha_{i/o}$  as an insulinostatic signaling molecule was originally demonstrated by the use of the  $G\alpha_{i/o}$  inhibitor PTX [36, 37]. There are three  $G\alpha_i$ -encoding genes *Gnai1*, *Gnai2*, and *Gnai3*, which synthesize  $G\alpha_{i1}$ ,  $G\alpha_{i2}$ , and  $G\alpha_{i3}$ , respectively, and one  $G\alpha_o$ -encoding gene *Gnao1*, which synthesizes  $G\alpha_o$  [38]. Here, we showed that PTX abolished the suppressive effects of NMU in  $\beta$  cells, whereas knockdown of *Gnai2* and *Gnao1* abolished NMU's effects, suggesting that  $G\alpha_{i2}$  and  $G\alpha_o$  are involved in signal transduction of NMUR1 in  $\beta$  cells. Both  $G\alpha_i$  and  $G\alpha_o$  belong to the  $G\alpha_{i/o}$  subfamily, and it is usually assumed that if a receptor couples to  $G\alpha_i$ , it will also couple similarly to  $G\alpha_o$  [39]. For example, norepinephrine and somatostatin inhibit insulin release via heterotrimeric  $G\alpha_i$  and  $G\alpha_o$  proteins by blocking the refilling of the readily releasable granule pool or decreasing granule vesicular docking [40, 41]. In addition, GPCRs can bind to distinct classes of heterotrimeric G-proteins in different cell types. A  $G\alpha_s$  and  $G\alpha_q$  signaling switch in  $\beta$  cells exposed to chronic hyperglycemia underlies the differential insulinotropic potential of incretins in diabetes [42]. Understanding more about these endogenous G-proteins opens the door to pharmaceutically targeting their activation, which would have major therapeutic potential in diabetes and obesity. Ghrelin activates a  $G\alpha_q$ -coupled GPCR, growth hormone secretagogue receptor (GHSR), to induce growth hormone secretion in the pituitary [43], whereas in  $\beta$  cells, ghrelin uses  $G\alpha_{i2}$  to attenuate glucose-induced  $Ca^{2+}$  signaling and insulin secretion [21]. Ghrelin activates GHS-R1a in pancreatic  $\beta$  cells, initiating the  $G\alpha_{i/o}$  signaling pathway via heterodimer formation with somatostatin receptor 5 [21, 44]. Despite the fact that NMUR1 and NMUR2 were discovered as GHSR homologs [45], it remains to be determined whether such dimerization occurs between NMUR1 and somatostatin receptors. Although the mechanisms underlying the involvement of  $G\alpha_i$  and  $G\alpha_o$  signaling in NMU inhibitory effects on insulin secretion require detailed investigation, including studies at the structural level, our findings provide important leads regarding the endogenous NMUR1 transduction pathway. In addition, the diversity of GPCR coupling to various types of G-proteins and the subsequent activation of distinct intracellular signal transduction may be explained by alterations in guanine nucleotide exchange factor or  $G\alpha$  subunit-regulated GTP hydrolysis [46, 47].

NMUR1 activates  $G\alpha_q$  to increase intracellular  $Ca^{2+}$  levels in various cell types [24, 48]; however, in neurons of mouse dorsal root ganglia and hippocampus, NMUR1 binds to  $G\alpha_{i/o}$  to inhibit T-type and L-type  $Ca^{2+}$  channels, respectively [30, 31]. In this study, PTX abolished NMU-suppressed calcium influx in  $\beta$  cells, suggesting that using different  $G\alpha$  proteins, NMUR1 apparently exhibits opposite effects on calcium mobilization, depending on different cell types.

The other insulin-releasing signal in  $\beta$  cells is intracellular cAMP [49, 50]. The intracellular cAMP level is determined by a balance between production by adenylyl cyclases and degradation by cyclic nucleotide phosphodiesterase (PDE). Here, we showed that NMU suppresses forskolin-stimulated cAMP in mouse and human islets in the presence of the PDE inhibitor IBMX, suggesting that NMU affects cAMP levels by regulating initiation of cAMP synthesis rather than degradation. Thus, NMU may suppress GSIS at least partly by decreasing the intracellular cAMP level.

Previously, we showed that NMU induced  $\beta$ -cell failure by triggering mitochondrial dysfunction and ER stress [15]. In this study, we showed that knockdown of  $G\alpha_{i2}$  and  $G\alpha_o$  in  $\beta$  cells restored NMU-induced mitochondrial dysfunction and ER stress. These findings suggest that  $G\alpha_{i2}$  and  $G\alpha_o$  proteins couple to NMUR1 and induce  $\beta$ -cell dysfunction. In addition,  $G\alpha_{i2}$  and  $G\alpha_o$  proteins are crucial in the NMU–NMUR1 regulating glucose-stimulated  $Ca^{2+}$  signaling and insulin secretion in  $\beta$  cells. Knowledge of the NMU signaling cascades, NMU–

NMUR1– $G\alpha_{i2}$  and  $G\alpha_o$ –cAMP–calcium–insulin, may provide insight into  $\beta$ -cell biology and the pathogenesis of diabetes related to NMU.

## Acknowledgments

The authors thank Jun-ichi Miyazaki (Osaka University) for providing MIN6-K8 cells. The authors also appreciate the able support of laboratory technician Itsuki Morinaga (University of Miyazaki).

## Author Contributions

**Data curation:** Weidong Zhang, Md Nurul Islam.

**Formal analysis:** Weidong Zhang, Yuki Nakazato.

**Funding acquisition:** Masamitsu Nakazato.

**Investigation:** Weidong Zhang, Yuki Nakazato, Md Nurul Islam.

**Project administration:** Masamitsu Nakazato.

**Resources:** François Pattou, Julie Kerr-Conte.

**Supervision:** Hideyuki Sakoda, Masamitsu Nakazato.

**Writing – original draft:** Weidong Zhang.

**Writing – review & editing:** Weidong Zhang, Hideyuki Sakoda, Yuki Nakazato, François Pattou, Julie Kerr-Conte, Masamitsu Nakazato.

## References

1. Rutter GA, Pullen TJ, Hodson DJ, Martinez-Sanchez A. Pancreatic  $\beta$ -cell identity, glucose sensing and the control of insulin secretion. *Biochem J*. 2015; 466(2): 203–218. <https://doi.org/10.1042/BJ20141384> PMID: 25697093
2. Kelly C, McClenaghan NH, Flatt PR. Role of islet structure and cellular interactions in the control of insulin secretion. *Islets*. 2011; 3(2): 41–47. <https://doi.org/10.4161/isl.3.2.14805> PMID: 21372635
3. Khan D, Moffet CR, Flatt PR, Kelly C. Role of islet peptides in beta cell regulation and type 2 diabetes therapy. *Peptides*. 2018; 100: 212–218. <https://doi.org/10.1016/j.peptides.2017.11.014> PMID: 29412821
4. Ahrén B. Islet G protein-coupled receptors as potential targets for treatment of type 2 diabetes. *Nat Rev Drug Discov*. 2009; 8(5): 369–385. <https://doi.org/10.1038/nrd2782> PMID: 19365392
5. Van der Meulen T, Donaldson CJ, Cáceres E, Hunter AE, Cowing-Zitron C, Pound LD, et al. Urocortin3 mediates somatostatin-dependent negative feedback control of insulin secretion. *Nat Med*. 2015; 21(7): 769–776. <https://doi.org/10.1038/nm.3872> PMID: 26076035
6. Minamino N, Kangawa K, Matsuo H. Neuromedin U-8 and U-25: novel uterus stimulating and hypertensive peptides identified in porcine spinal cord. *Biochem Biophys Res Commun*. 1985; 130(3): 1078–1085. [https://doi.org/10.1016/0006-291x\(85\)91726-7](https://doi.org/10.1016/0006-291x(85)91726-7) PMID: 3839674
7. Minamino N, Kangawa K, Honzawa M, Matsuo H. Isolation and structural determination of rat neuromedin U. *Biochem Biophys Res Commun*. 1988; 156(1): 355–360. [https://doi.org/10.1016/s0006-291x\(88\)80848-9](https://doi.org/10.1016/s0006-291x(88)80848-9) PMID: 3178840
8. Nakazato M, Hanada R, Murakami N, Date Y, Mondal MS, Kojima M, et al. Central effects of neuromedin U in the regulation of energy homeostasis. *Biochem Biophys Res Commun*. 2000; 277(1): 191–194. <https://doi.org/10.1006/bbrc.2000.3669> PMID: 11027662
9. Mitchell JD, Maguire JJ, Davenport AP. Emerging pharmacology and physiology of neuromedin U and the structurally related peptide neuromedin S. *Br J Pharmacol*. 2009; 158(1): 87–103. <https://doi.org/10.1111/j.1476-5381.2009.00252.x> PMID: 19519756
10. Peier AM, Desai K, Hubert J, Du X, Yang L, Qian Y, et al. Effects of peripherally administered neuromedin U on energy and glucose homeostasis. *Endocrinology*. 2011; 152(7): 2644–2654. <https://doi.org/10.1210/en.2010-1463> PMID: 21586559

11. Zhang W, Sakoda H, Miura A, Shimizu K, Mori K, Miyazato M, et al. Neuromedin U suppresses glucose-stimulated insulin secretion in pancreatic  $\beta$  cells. *Biochem Biophys Res Commun*. 2017; 493(1): 677–683. <https://doi.org/10.1016/j.bbrc.2017.08.132> PMID: 28864416
12. Amisten S, Salehi A, Rorsman P, Jones PM, Persaud SJ. An atlas and functional analysis of G-protein coupled receptors in human islets of Langerhans, *Pharmacol Ther*. 2013; 139(3): 359–391. <https://doi.org/10.1016/j.pharmthera.2013.05.004> PMID: 23694765
13. Kaczmarek P, Malendowicz LK, Pruszyńska-Oszmialek E, Wojciechowicz T, Szczepankiewicz D, Szkułdelski T, et al. Neuromedin U receptor 1 expression in the rat endocrine pancreas and evidence suggesting neuromedin U suppressive effect on insulin secretion from isolated rat pancreatic islets. *Int J Mol Med*. 2006; 18(5): 951–955. PMID: 17016626
14. Alfa RW, Park S, Skelly KR, Poffenberger G, Jain N, Gu X, et al. Suppression of insulin production and secretion by a decretin hormone. *Cell Metab*. 2015; 21(2): 323–333. <https://doi.org/10.1016/j.cmet.2015.01.006> PMID: 25651184
15. Zhang W, Sakoda H, Nakazato M. Neuromedin U suppresses insulin secretion by triggering mitochondrial dysfunction and endoplasmic reticulum stress in pancreatic  $\beta$ -cells. *FASEB J*. 2020; 34(1): 133–147. <https://doi.org/10.1096/fj.201901743R> PMID: 31914613
16. Cabrera-Vera TM, Vanhauwe J, Thomas TO, Medkova M, Preininger A, Mazzoni MR, et al. Insights into G protein structure, function, and regulation. *Endocr Rev*. 2003; 24(6): 765–781. <https://doi.org/10.1210/er.2000-0026> PMID: 14671004
17. Birnbaumer L. Receptor-to-effector signaling through G proteins: roles for beta gamma dimers as well as alpha subunits. *Cell*. 1992; 71(7): 1069–1072. [https://doi.org/10.1016/s0092-8674\(05\)80056-x](https://doi.org/10.1016/s0092-8674(05)80056-x) PMID: 1335363
18. Birnbaumer L. Expansion of signal transduction by G proteins. The second 15 years or so: from 3 to 16 alpha subunits plus betagamma dimers. *Biochim Biophys Acta*. 2007; 1768(4): 772–793. <https://doi.org/10.1016/j.bbamem.2006.12.002> PMID: 17258171
19. Zhao A, Ohara-Imaizumi M, Brissova M, Benninger RK, Xu Y, Hao Y, et al. Gao represses insulin secretion by reducing vesicular docking in pancreatic beta-cells. *Diabetes*. 2010; 59(10): 2522–2529. <https://doi.org/10.2337/db09-1719> PMID: 20622165
20. Sharp GW. Mechanisms of inhibition of insulin release. *Am J Physiol*. 1996; 271(6 Pt 1): C1781–C1799. <https://doi.org/10.1152/ajpcell.1996.271.6.C1781> PMID: 8997178
21. Dezaki K, Kakei M, Yada T. Ghrelin uses  $G_{\alpha_{12}}$  and activates voltage-dependent  $K^+$  channels to attenuate glucose-induced  $Ca^{2+}$  signaling and insulin release in islet  $\beta$ -cells: novel signal transduction of ghrelin. *Diabetes*. 2007; 56(9): 2319–2327. <https://doi.org/10.2337/db07-0345> PMID: 17575083
22. Holz GG. Epac: a new cAMP-binding protein in support of glucagon-like peptide-1 receptor-mediated signal transduction in the pancreatic beta-cell. *Diabetes*. 2004; 53(1): 5–13. <https://doi.org/10.2337/diabetes.53.1.5> PMID: 14693691
23. Berna MJ, Tapia JA, Sancho V, Jensen RT. Progress in developing cholecystokinin (CCK)/gastrin receptor ligands that have therapeutic potential. *Curr Opin Pharmacol*. 2007; 7(6): 583–592. <https://doi.org/10.1016/j.coph.2007.09.011> PMID: 17997137
24. Hsu SH, Luo CW. Molecular dissection of G protein preference using  $G_s\alpha$  chimeras reveals novel ligand signaling of GPCRs. *Am J Physiol Endocrinol Metab*. 2007; 293(4): E1021–E1029. <https://doi.org/10.1152/ajpendo.00003.2007> PMID: 17652154
25. Aiyar N, Disa J, Foley JJ, Buckley PT, Wixted WE, Pullen M, et al. Radioligand binding and functional characterization of recombinant human NmU1 and NmU2 receptors stably expressed in clonal human embryonic kidney-293 cells. *Pharmacology*. 2004; 72(1): 33–41. <https://doi.org/10.1159/000078630> PMID: 15292653
26. Brighton PJ, Szekeres PG, Wise A, Willars GB. Signaling and ligand binding by recombinant neuromedin U receptors: evidence for dual coupling to  $G_{\alpha_{q/11}}$  and  $G_{\alpha_i}$  and an irreversible ligand-receptor interaction. *Mol Pharmacol*. 2004; 66(6): 1544–1556. <https://doi.org/10.1124/mol.104.002337> PMID: 15331768
27. Pouyssegur J, Seuwen K. Transmembrane receptors and intracellular pathways that control cell proliferation. *Annu Rev Physiol*. 1992; 54:195–210. <https://doi.org/10.1146/annurev.ph.54.030192.001211> PMID: 1314039
28. Xu Y, Xie X. Glucagon receptor mediates calcium signaling by coupling to  $G_{\alpha_{q/11}}$  and  $G_{\alpha_{o}}$  in HEK293 cells. *J Recept Signal Transduct Res*. 2009; 29(6): 318–325. <https://doi.org/10.3109/10799890903295150> PMID: 19903011
29. Grady T, Fickova M, Tager HS, Trivedi D, Hruby VJ. Stimulation and inhibition of cAMP accumulation by glucagon in canine hepatocytes. *J Biol Chem*. 1987. 262(32): 15514–15520. PMID: 2824463

30. Wang F, Zhang Y, Jiang X, Zhang Y, Zhang L, Gong S, et al. Neuromedin U inhibits T-type  $Ca^{2+}$  channel currents and decreases membrane excitability in small dorsal root ganglia neurons in mice. *Cell Calcium*. 2011; 49(1): 12–22. <https://doi.org/10.1016/j.ceca.2010.11.002> PMID: 21106238
31. Zhang Y, Jiang D, Zhang J, Wang F, Jiang X, Tao J. Activation of neuromedin U type 1 receptor inhibits L-type  $Ca^{2+}$  channel currents via phosphatidylinositol 3-kinase-dependent protein kinase C epsilon pathway in mouse hippocampal neurons. *Cell Signal*. 2010; 22(11): 1660–1668. <https://doi.org/10.1016/j.cellsig.2010.06.006> PMID: 20599609
32. Miyazaki J, Araki K, Yamato E, Ikegami H, Asano T, Shibasaki Y. Establishment of a pancreatic  $\beta$  cell line that retains glucose-inducible insulin secretion: special reference to expression of glucose transporter isoforms. *Endocrinology*. 1990; 127(1): 126–132. <https://doi.org/10.1210/endo-127-1-126> PMID: 2163307
33. Al-Amily IM, Dunér P, Groop L, Salehi A. The functional impact of G protein-coupled receptor 142 (Gpr142) on pancreatic  $\beta$ -cell in rodent. *Pflugers Arch*. 2019; 471(4): 633–645. <https://doi.org/10.1007/s00424-019-02262-7> PMID: 30767071
34. Vantghem MC, Chetboun M, Gmyr V, Jannin A, Espiard S, Le Mapihan K, et al. Ten-year outcome of islet alone or islet after kidney transplantation in type 1 diabetes: a prospective parallel-arm cohort study. *Diabetes Care*. 2019; 42(11): 2042–2049. <https://doi.org/10.2337/dc19-0401> PMID: 31615852
35. Scarl RT, Corbin KL, Vann NW, Smith HM, Satin LS, Sherman A, et al. Intact pancreatic islets and dispersed beta-cells both generate intracellular calcium oscillations but differ in their responsiveness to glucose. *Cell Calcium*. 2019; 83: 102081. <https://doi.org/10.1016/j.ceca.2019.102081> PMID: 31563790
36. Gulbenkian A, Schobert L, Nixon, Tabachnick II. Metabolic effects of pertussis sensitization in mice and rats. *Endocrinology*. 1968; 83(4): 885–892. <https://doi.org/10.1210/endo-83-4-885> PMID: 4386786
37. Yajima M, Hosoda K, Kanbayashi Y, Nakamura T, Nogimori K, Mizushima Y, et al. Islets-activating protein (IAP) in *Bordetella pertussis* that potentiates insulin secretory responses of rats. Purification and characterization, *J Biochem*. 1978; 83(1): 295–303. <https://doi.org/10.1093/oxfordjournals.jbchem.a131904> PMID: 203574
38. Wettschureck N, Offermanns S. Mammalian G proteins and their cell type specific functions. *Physiol Rev*. 2005; 85(4): 1159–1204. <https://doi.org/10.1152/physrev.00003.2005> PMID: 16183910
39. García-Nafria J, Tate CG. Cryo-EM structures of GPCRs coupled to  $G_s$ ,  $G_i$  and  $G_o$ . *Mol Cell Endocrinol*. 2019; 488:1–13. <https://doi.org/10.1016/j.mce.2019.02.006> PMID: 30930094
40. Straub SG, Sharp GWG. Evolving insights regarding mechanisms for the inhibition of insulin release by norepinephrine and heterotrimeric G proteins. *Am J Physiol Cell Physiol*. 2012; 302(12): C1687–C1698. <https://doi.org/10.1152/ajpcell.00282.2011> PMID: 22492651
41. Law SF, Yasuda K, Bell GI, Reisine T. Gi alpha 3 and G(o) alpha selectively associate with the cloned somatostatin receptor subtype SSTR2. *J Biol Chem*. 1993; 268(15): 10721–10727. PMID: 8098703
42. Oduori OS, Murao N, Shimomura K, Takahashi H, Zhang Q, Dou H, et al. Gs/Gq signaling switch in  $\beta$  cells defines incretin effectiveness in diabetes. *J Clin Invest*. 2020; 130(12): 6639–6655. <https://doi.org/10.1172/JCI140046> PMID: 33196462
43. Howard AD, Feighner SD, Cully DF, Arena JP, Liberatore PA, Rosenblum CI, et al. A receptor in pituitary and hypothalamus that functions in growth hormone release. *Science*. 1996; 273(5277): 974–977. <https://doi.org/10.1126/science.273.5277.974> PMID: 8688086
44. Park S, Jiang H, Zhang H, Smith RG. Modification of ghrelin receptor signaling by somatostatin receptor-5 regulates insulin release. *Proc Natl Acad Sci U S A*. 2012; 109(46): 19003–19008. <https://doi.org/10.1073/pnas.1209590109> PMID: 23112170
45. Przygodzka P, Soboska K, Sochacka E, Boncela J. Neuromedin U: a small peptide in the big world of cancer. *Cancers (Basel)*. 2019; 11(9): 1312. <https://doi.org/10.3390/cancers11091312> PMID: 31492042
46. Jiang M, Bajpayee NS. Molecular mechanisms of  $G_o$  signaling. *Neurosignals*. 2009; 17(1): 23–41. <https://doi.org/10.1159/000186688> PMID: 19212138
47. Oldham WM, Hamm HE. Heterotrimeric G protein activation by G-protein coupled receptors. *Nat Rev Mol Cell Biol*. 2008; 9(1): 60. <https://doi.org/10.1038/nrm2299> PMID: 18043707
48. Klose CSN, Mahlaköiv T, Moeller JB, Rankin LC, Flamar AL, Kabata H, et al. The neuropeptide neuromedin U stimulates innate lymphoid cells and type 2 inflammation. *Nature*. 2017; 549(7671): 282–286. <https://doi.org/10.1038/nature23676> PMID: 28869965
49. Henquin JC. Triggering and amplifying pathways of regulation of insulin secretion by glucose. *Diabetes*. 2000; 49(11): 1751–1760. <https://doi.org/10.2337/diabetes.49.11.1751> PMID: 11078440
50. Dyachok O, Idevall-Hagren O, Sägetorp J, Tian G, Wuttke A, Arriemerlou C, et al. Glucose-induced cyclic AMP oscillations regulate pulsatile insulin secretion. *Cell Metab*. 2008; 8(1): 26–37. <https://doi.org/10.1016/j.cmet.2008.06.003> PMID: 18590690